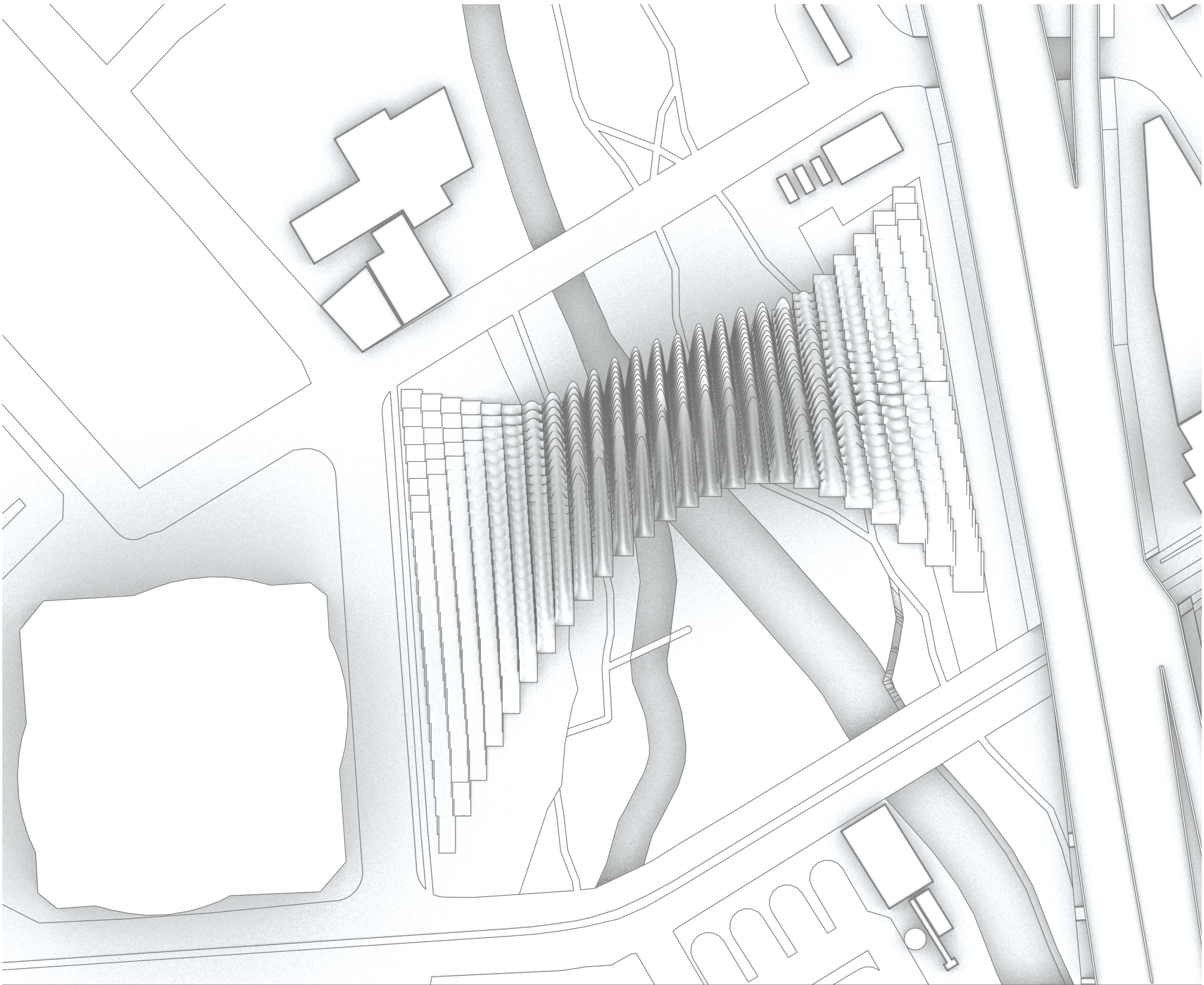
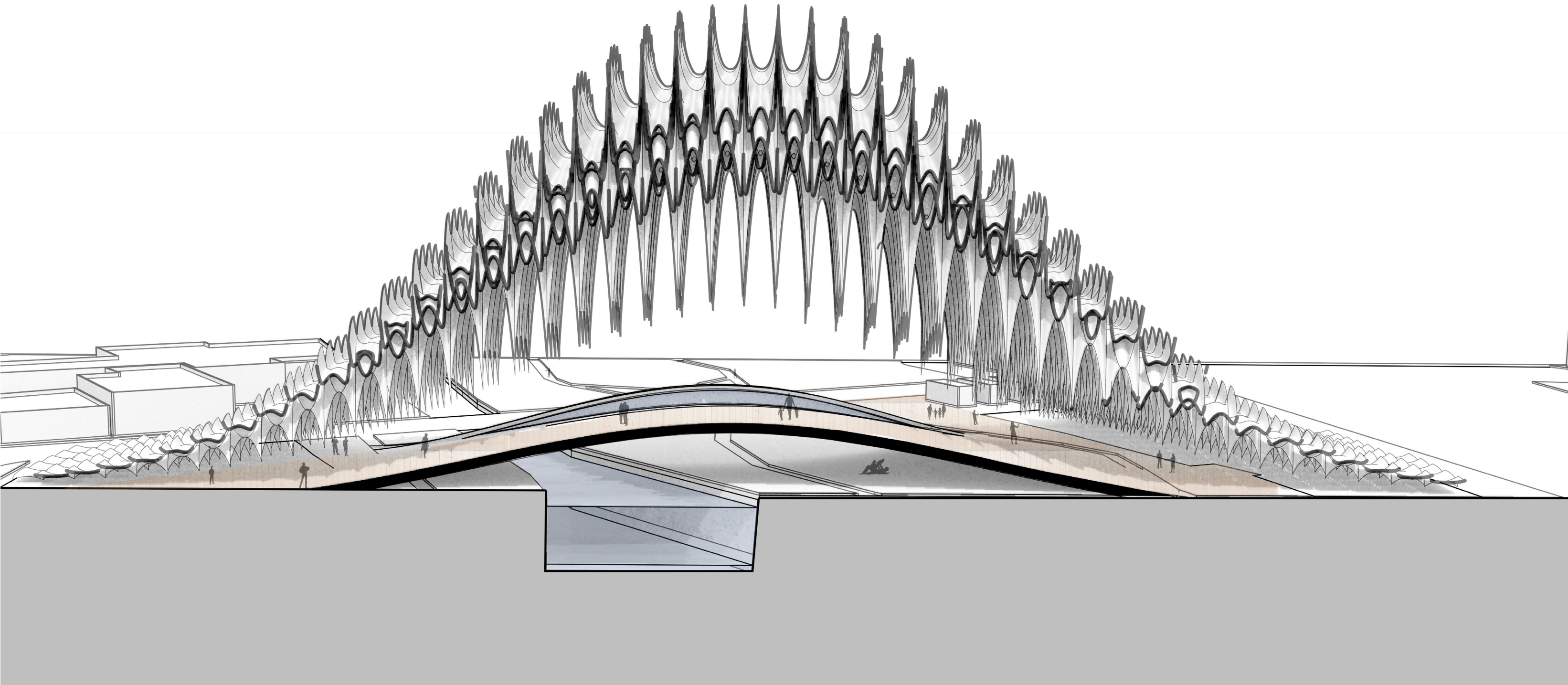


Digital Tectonic Pavilion

San Jose's Silicon Valley Is Looking For A New Iconic Landmark. This Project Applied Computational Design Tools In Order To Develop An Informed System With An Internal Logic. As A Homage To San Jose's Former Light Tower, The Digital Tectonic Pavilion Incorporates Reactive Led Lighting Within Each Unique Shaped panel. The Simple, Yet Intricate Pattern Of Nestled Panels Create A Simple, Iconic Gesture That Will Boldly Represent The City Of San Jose.

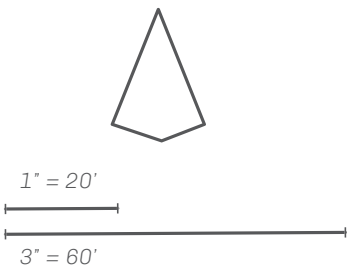
The Design Respects The Existing Bike Paths, Yet Establishes New Areas Of Access From The Extremities. The Bridge Allows Pedestrians To Cross The River To The Other Side Of The Park And Enjoy A Beautiful View Of The City.

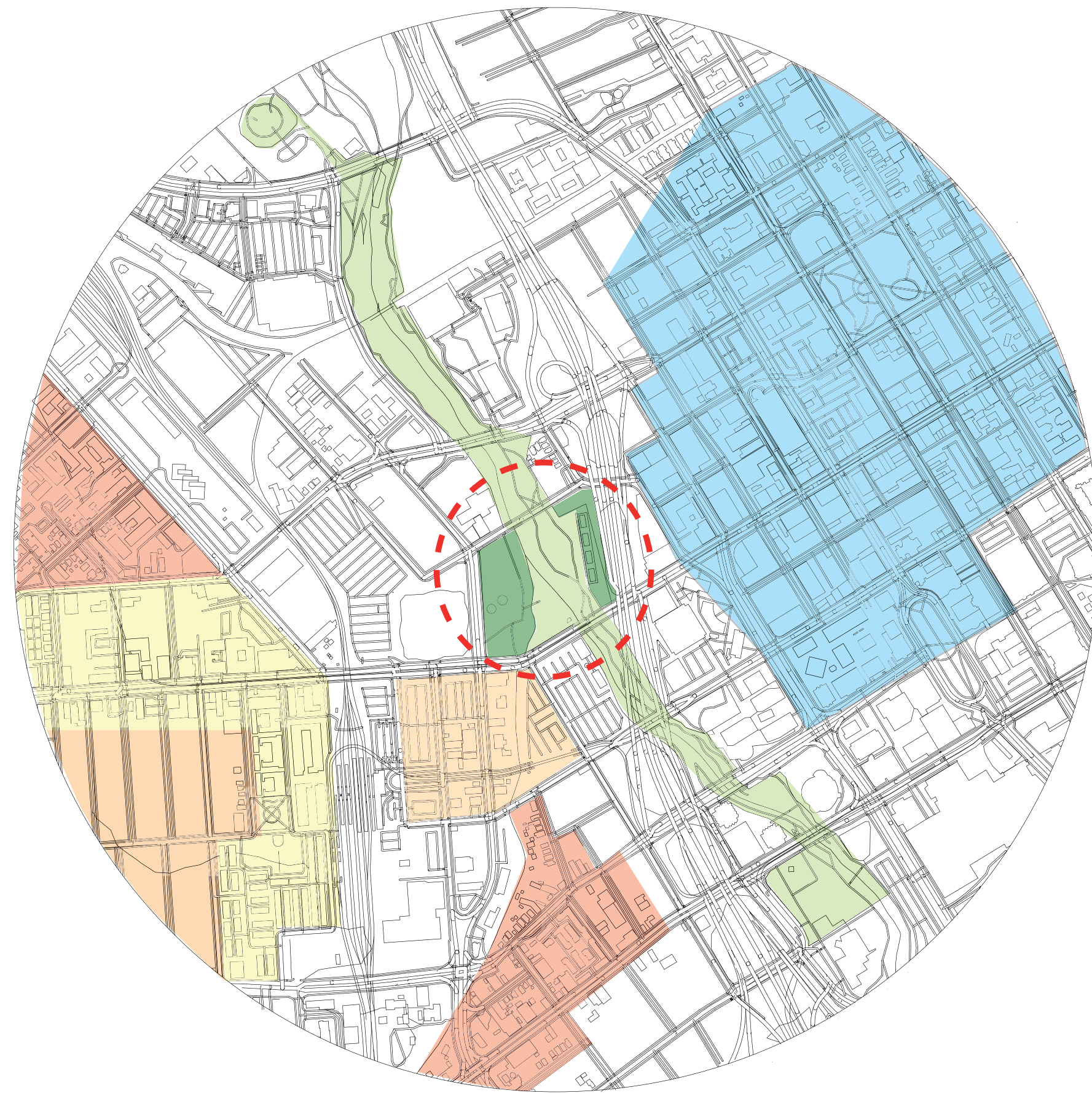
This Pavilion Works To Represent The City's Unique Style And Unites Its Rich Culture Of Community And Diversity.



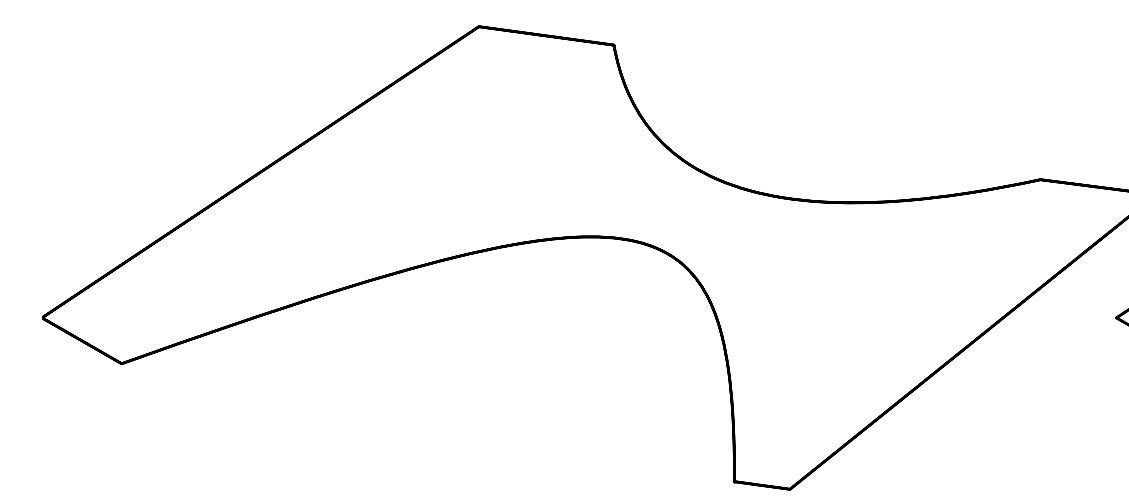
Structure Dimensions

Height: 134 Ft.
Length: 415 Ft.
Width: 495 Ft.

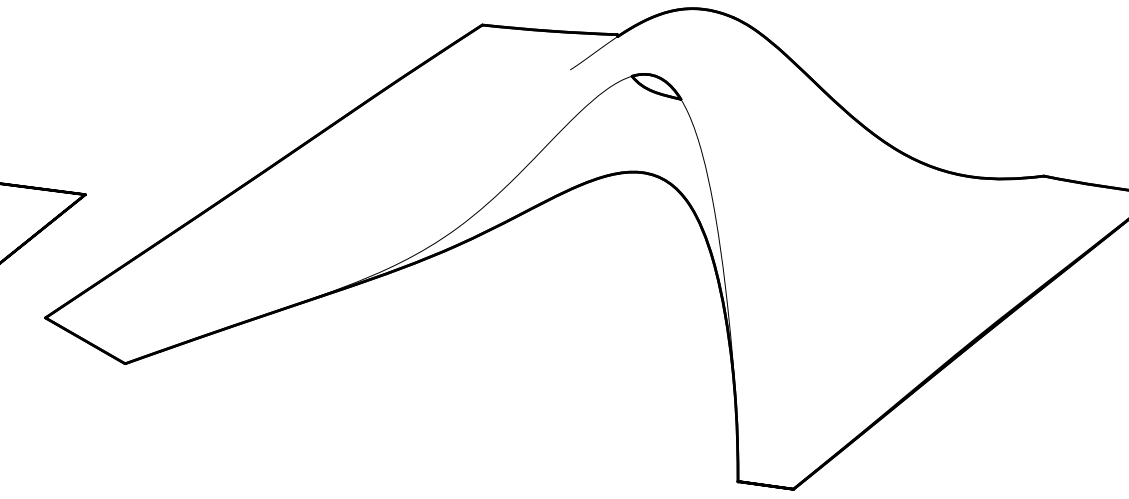




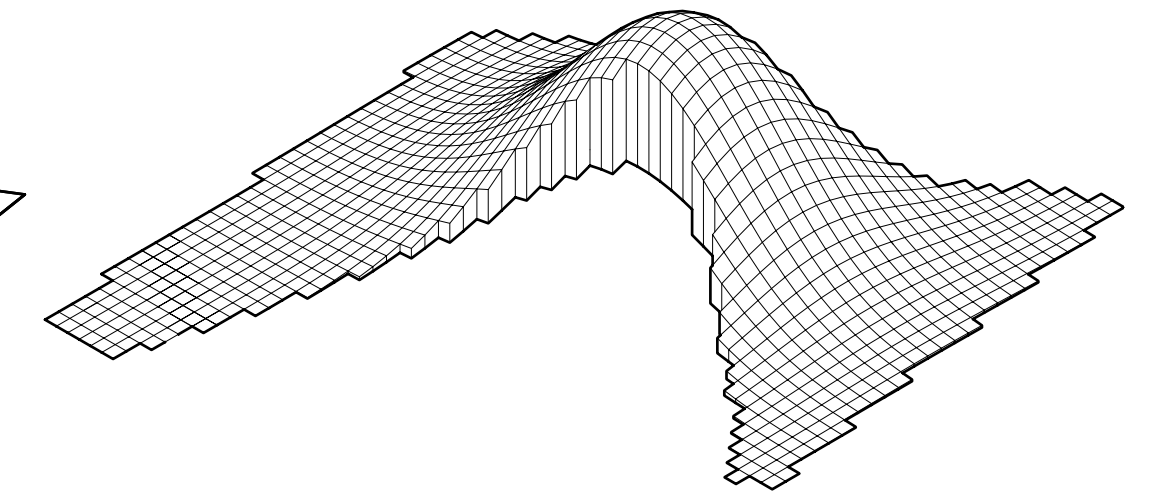
- AREA GREEN EAST
- COMMERCIAL
- RESIDENTIAL
- MIXED USE
- FUTURE DEVELOPMENT
- PARKS
- SITE



SITE BOUNDARY

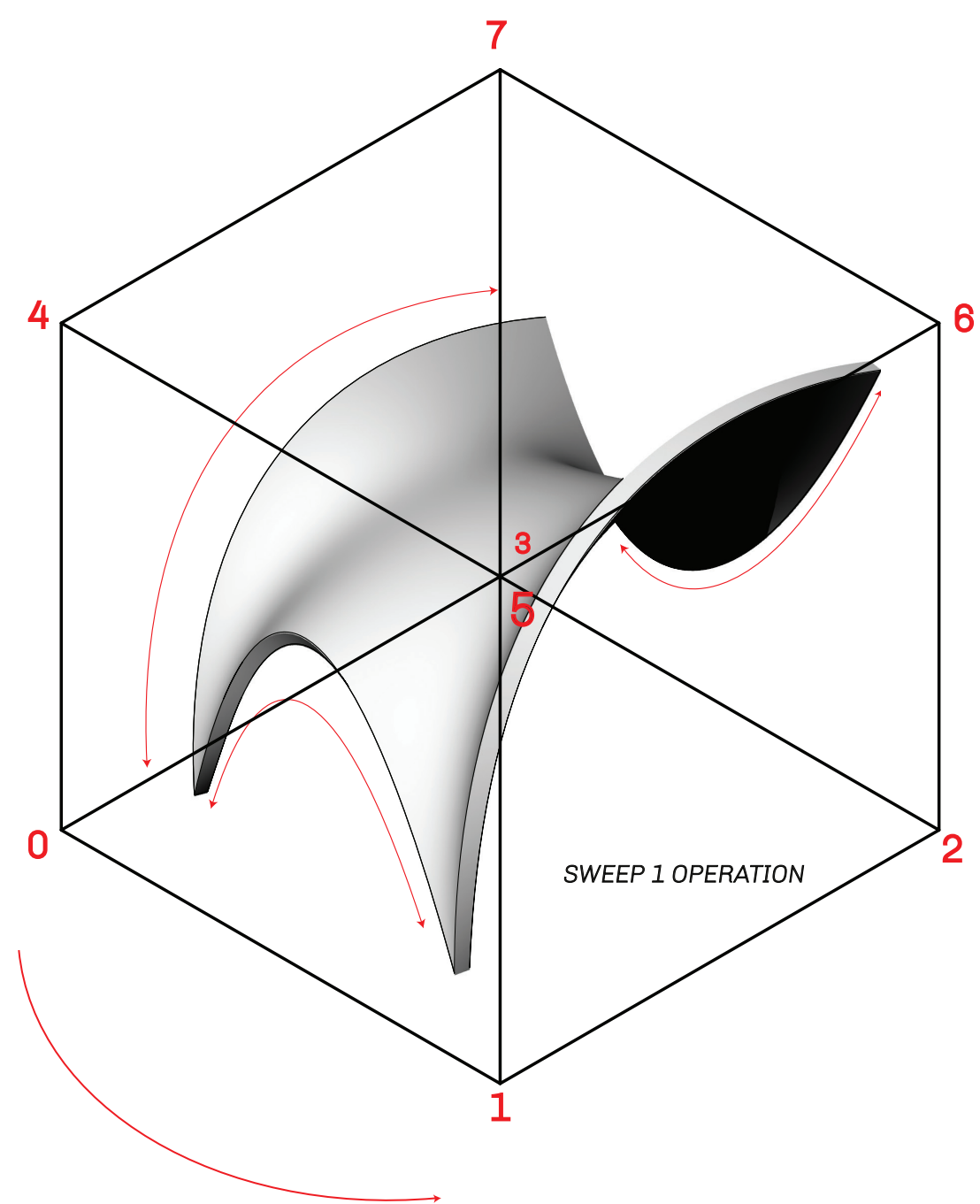


INFORMED SITE CONSTRAINTS

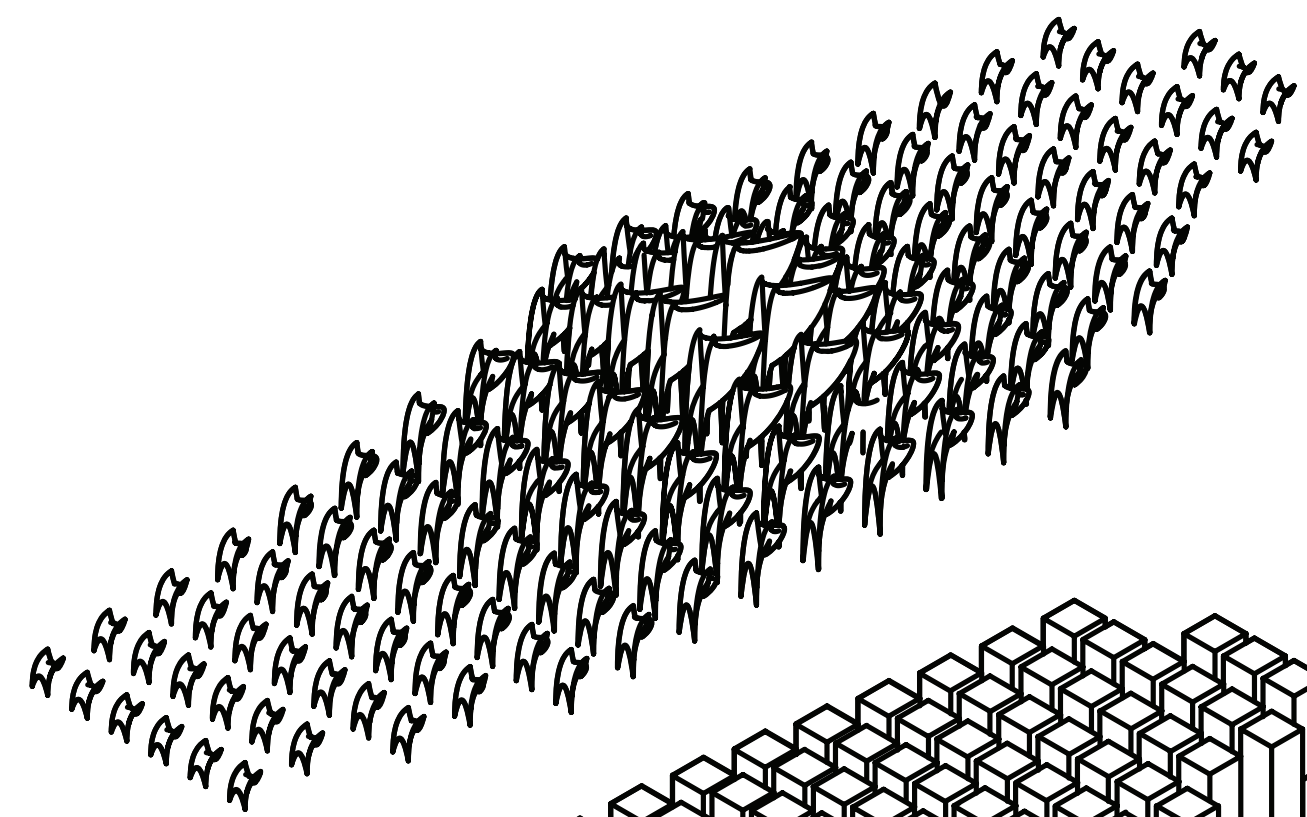


CELLULAR DEPLOYMENT

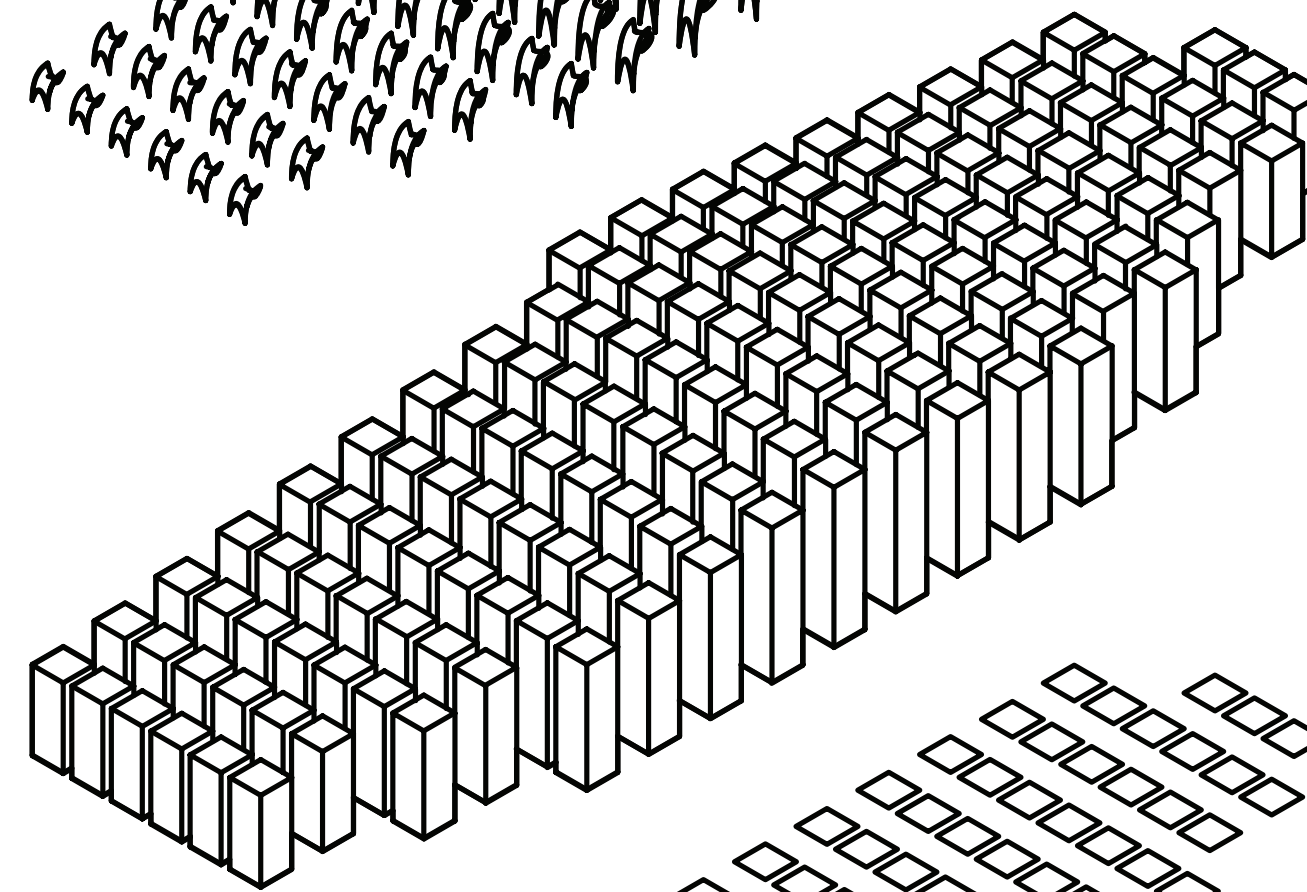
BOUNDING BOX MODULE



SHAPE DEPLOYMENT



CELL DEPLOYMENT



GRID DEPLOYMENT

