

SILICON VALLEY THINKS BIG... CRAZY BIG. TECHNOLOGY CHANGING EVERY ASPECT OF LIFE. A RIVER OF THOUGHT THAT NOW COURSES THROUGH ALL THINGS MANKIND... CONNECTING EVERYTHING.

OUR SCHEME, EXPANDING ON THE ORIGINAL SAN JOSE LIGHT TOWER, CREATES SIX LIGHT TOWERS, CONNECTED BY BRIDGES, THAT RADIATE LIGHT OUT FROM SILICON VALLEY'S NEW CONCEPTUAL CENTER. THESE TOWERS BECOME THE SILICON VALLEY LIGHT TOWERS MUSEUM, WHERE PEOPLE FROM ALL OVER THE WORLD CAN COME EXPLORE, EXPERIENCE, AND STUDY THE VAST INFLUENCE OF SILICON VALLEY ON THE WORLD.

A CENTRAL TOWER OFFERS AN OVERVIEW OF THE MUSEUM'S OFFERINGS AND EACH OF THE OTHER FIVE TOWERS EXAMINES A PARTICULAR AREA OF INFLUENCE:

- 1) OVERVIEW
- 2) INFORMATION AND MANUFACTURING
- 3) SCIENCE AND MEDICINE
- 4) GOVERNMENT AND BUSINESS
- 5) ENVIRONMENT AND AGRICULTURE
- 6) CULTURE AND SOCIETIES

THESE TOWERS HAVE TRANSLUCENT ENVELOPES THAT ALLOW SOFT DAYLIGHT FOR THE EXHIBIT FLOORS AND PROGRAMMABLE BACKLIGHTING OPPORTUNITIES AT NIGHT.

THE CABLE-STAY BRIDGES CONNECT THE TOWERS BOTH CONCEPTUALLY AND PHYSICALLY. THEY REPRESENT THE LONG HISTORY OF BRIDGES IN THE BAY AREA. THEY CLEAR SPAN THE RIVER AND RIPARIAN AREAS SO THEY CAN REMAIN UNDISTURBED. THEY ALLOW OPPORTUNITIES TO VIEW AND EXPERIENCE THE RIVERS FROM UNIQUE PERSPECTIVES.

WE BELIEVE THAT THE CENTRAL TOWER (#1) SHOULD BE AT THE CENTER OF THE PROJECT ON CONFLUENCE POINT. IF THE CENTRAL TOWER CANNOT BE ON CONFLUENCE POINT, THEN IT WOULD SHIFT TO THE CENTRAL POSITION ON ARENA GREEN WEST.

CONFLUENCE POINT COULD REMAIN AS IS.

A POTENTIAL 6TH TOWER COULD BE DEVELOPED ACROSS SANTA CLARA ST. CREATING A CEREMONIAL GATEWAY OVER THE STREET.

BEAUTIFUL, UNIQUE, DROUGHT TOLERANT GARDENS WILL BE ALONG BOTH SIDES OF THE RIPARIAN AREAS. THE CONTINUATION OF THE EXISTING GRASS AREA WITH A NEW MATCHING GRASS AREA ON THE OPPOSITE BANK ALLOW FOR EXPANDED VIEWING AND EVENTS. A DENSE FOREST WILL BUFFER THE FREEWAY.

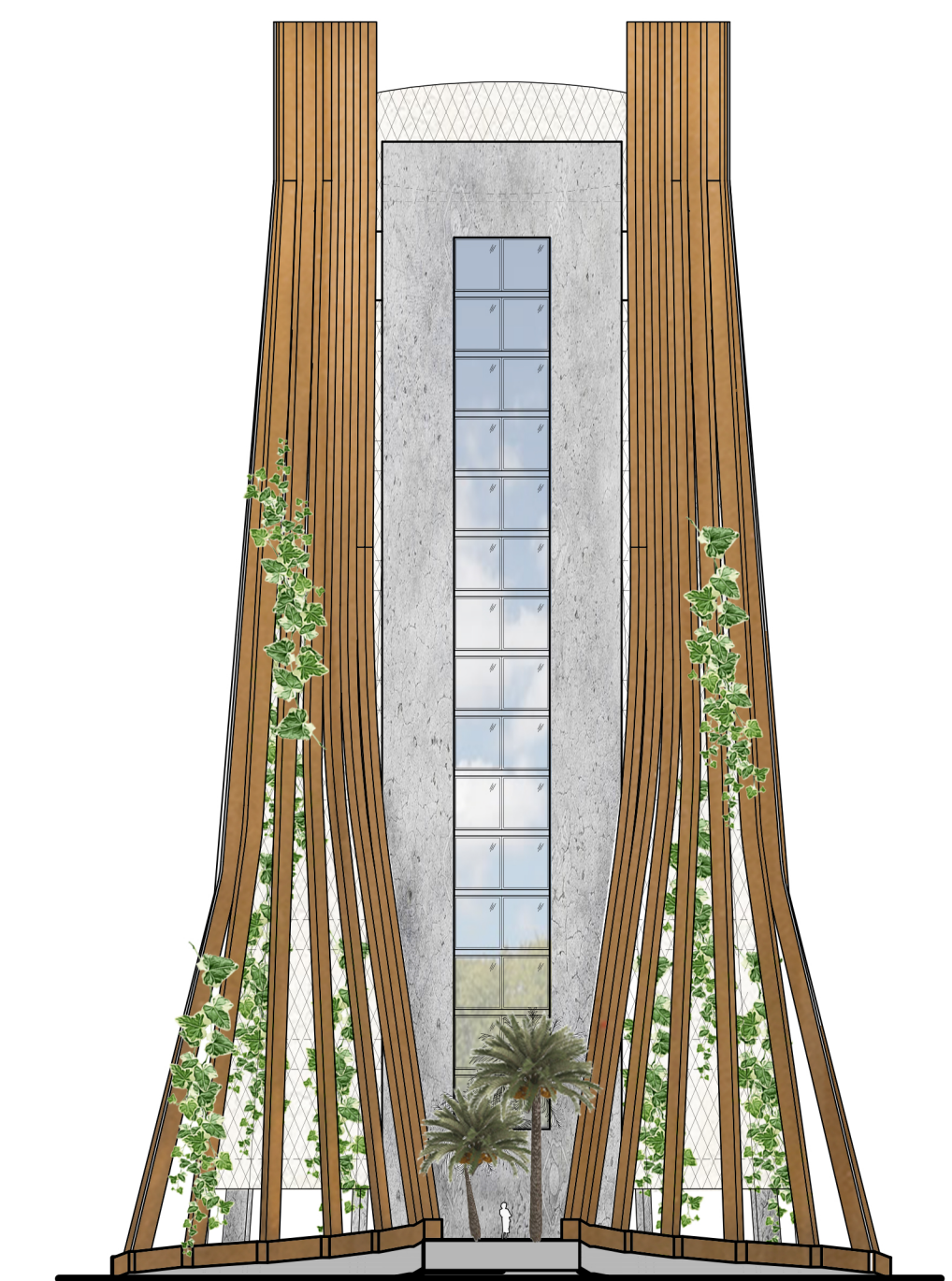
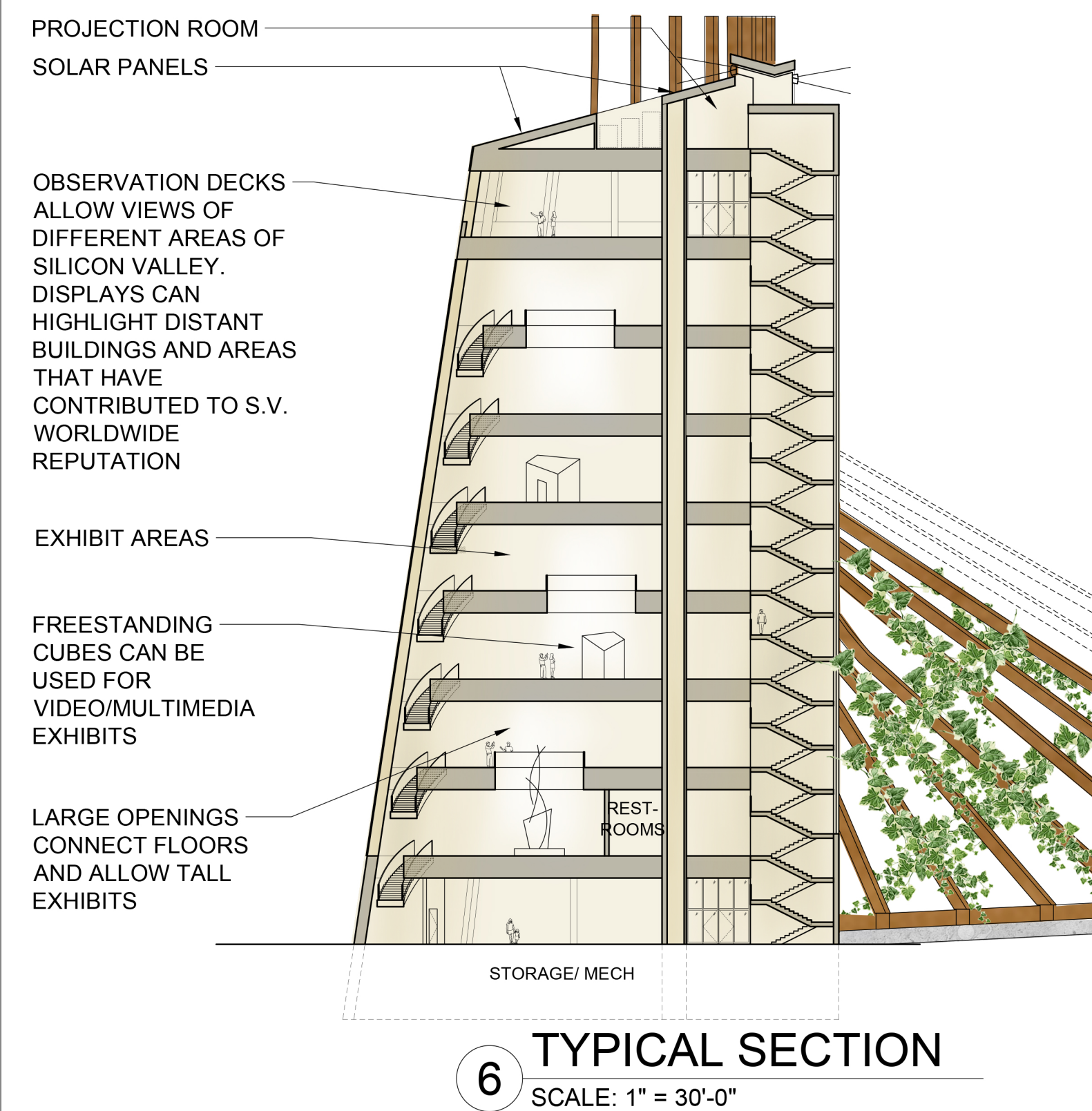
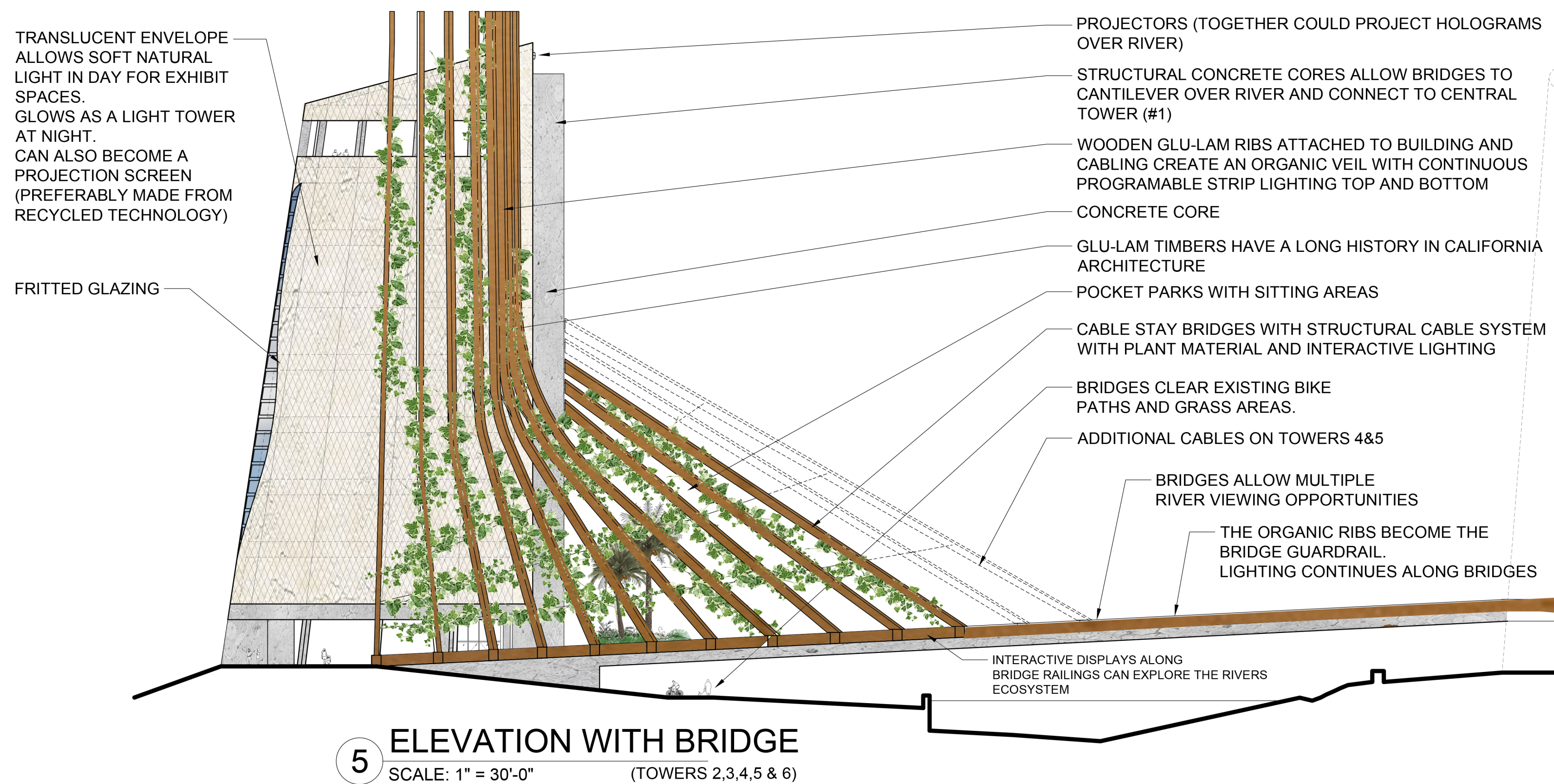
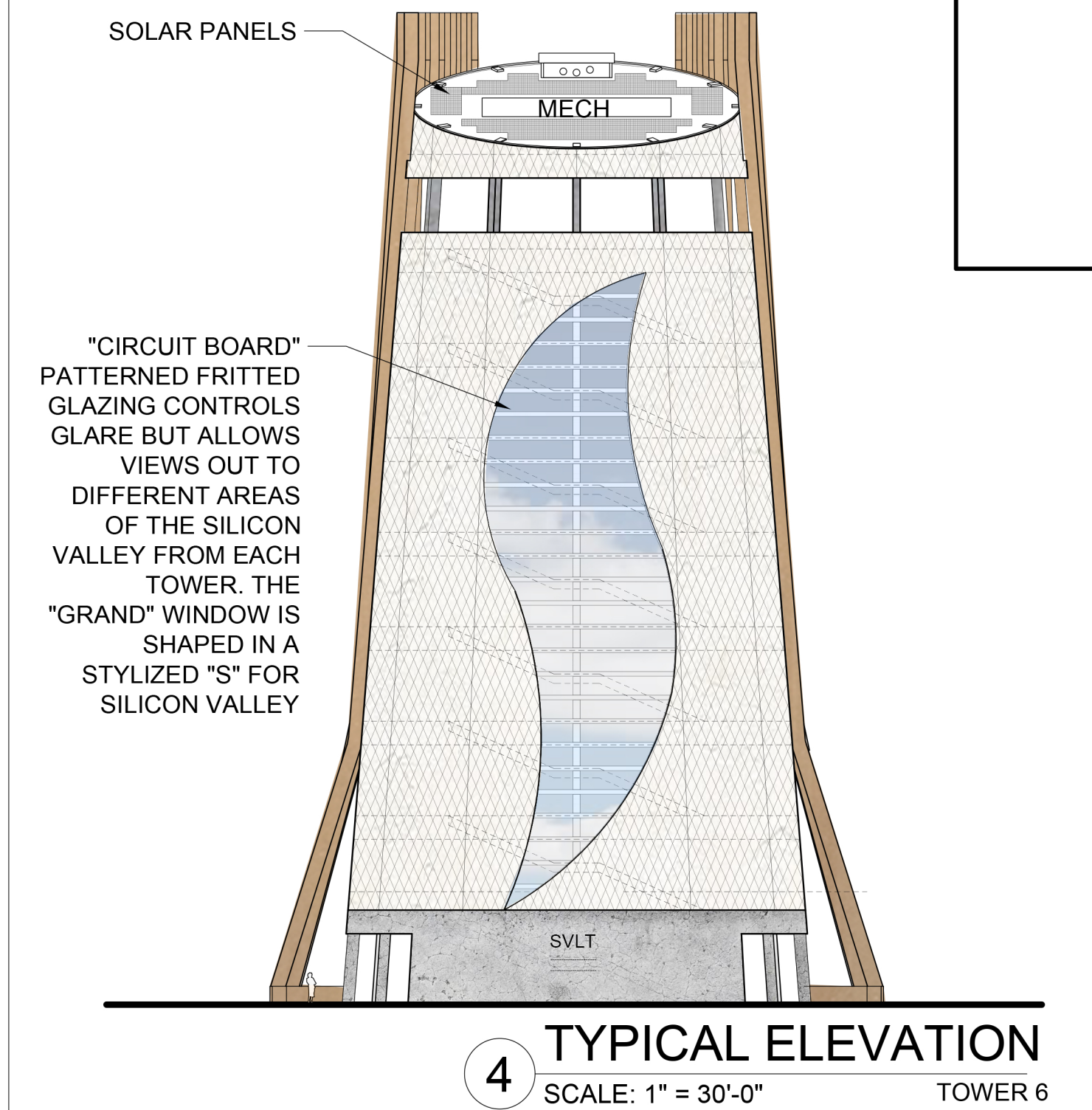
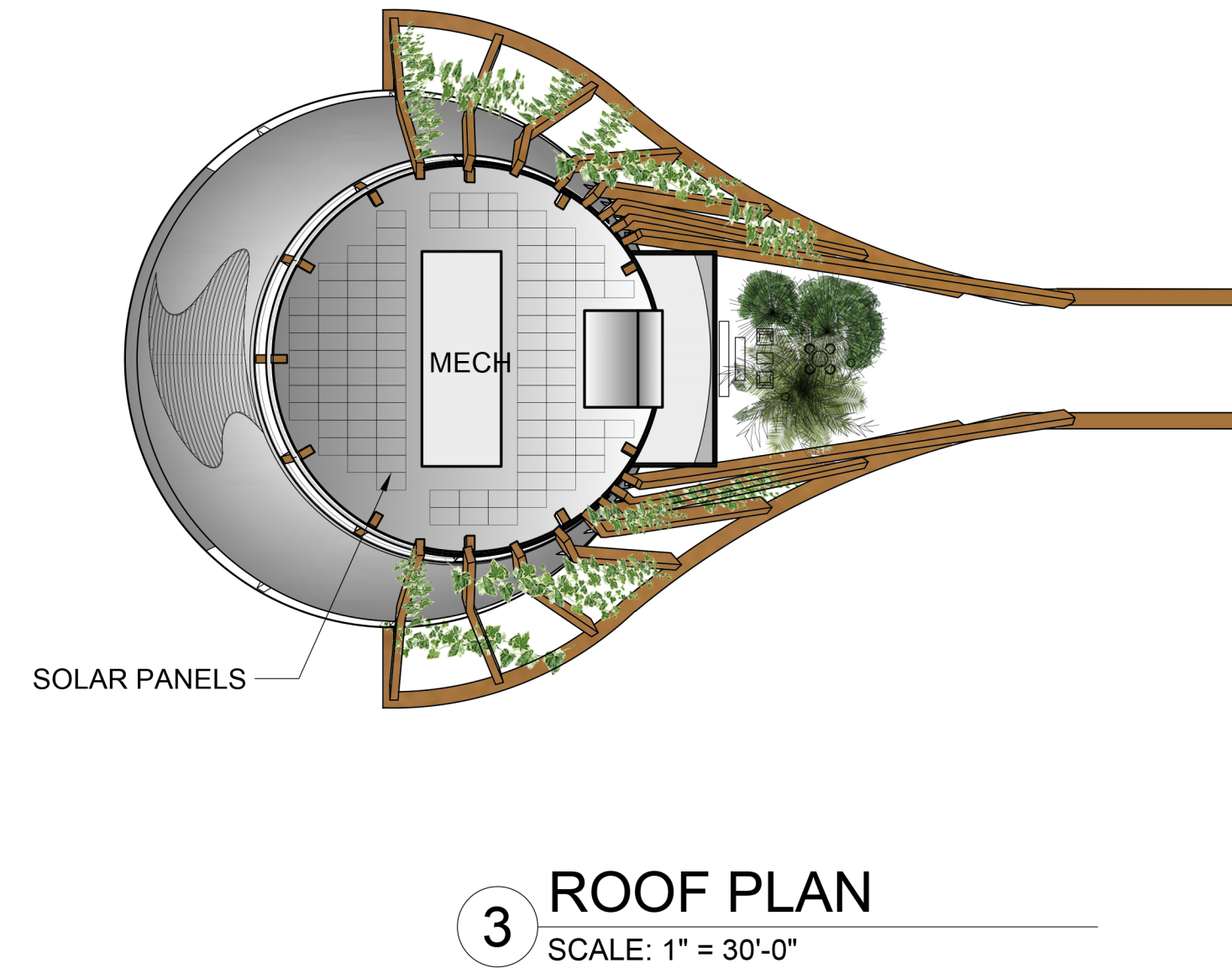
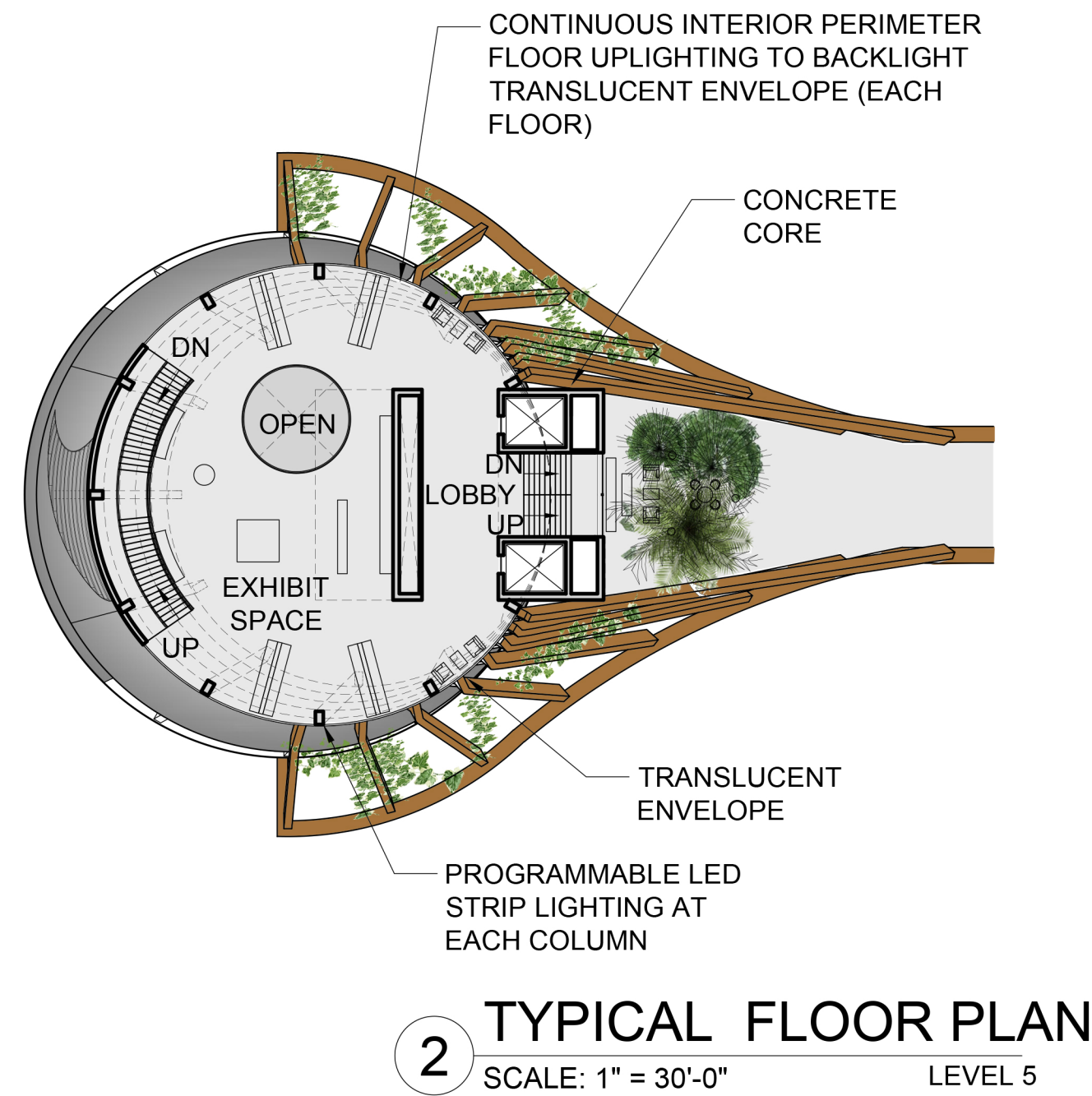
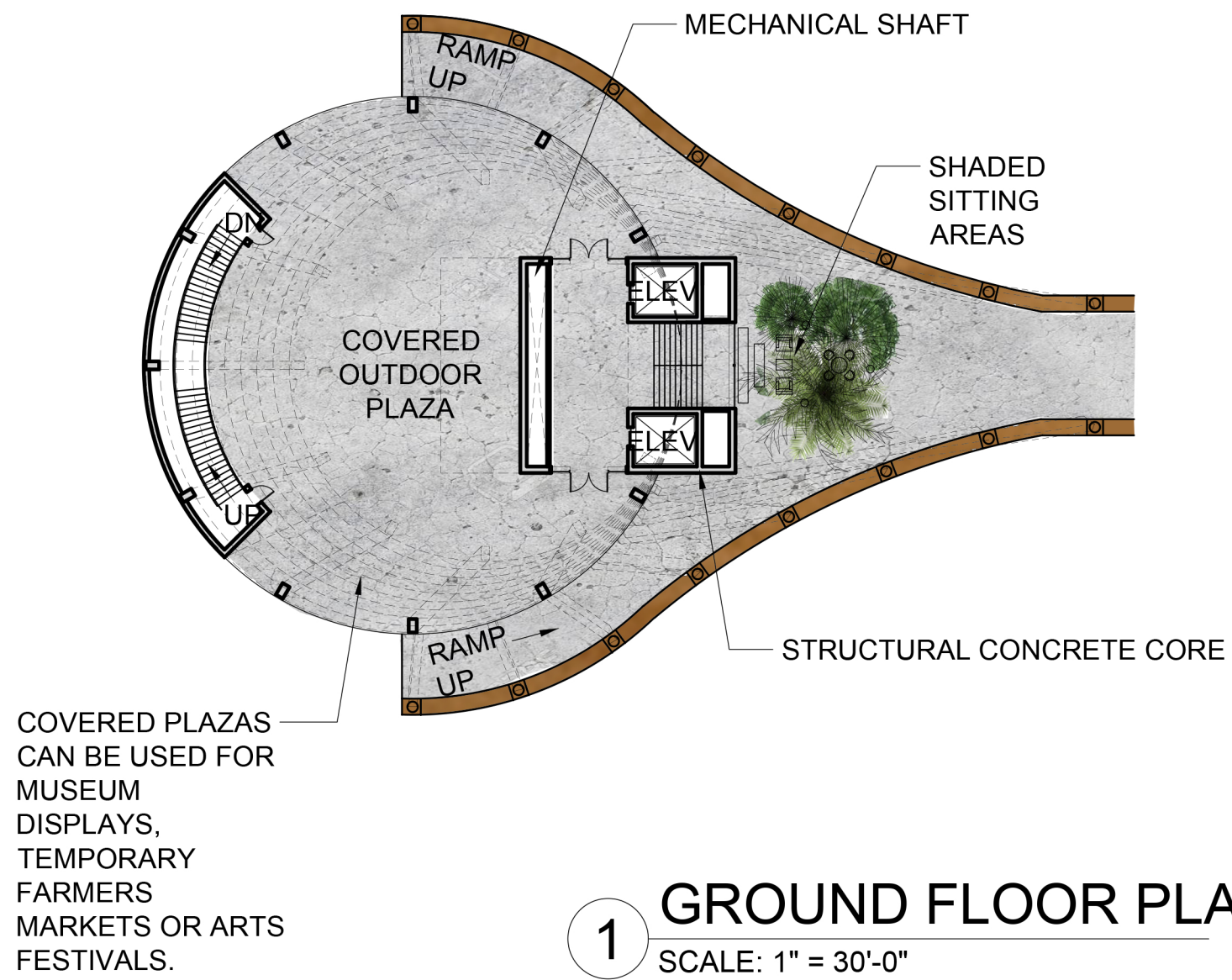
A NEW CURVED ADMINISTRATION/OFFICE BUILDING BUFFERS THE EXISTING ARENA WHILE OFFERING RESTAURANTS, OUTDOOR DINING AREAS, INTERACTIVE WATER FEATURES, AND PLAZA AREAS. SUBTERRANEAN PARKING CAN BE CREATED UNDER THIS BUILDING FOR APPROXIMATELY 120 CARS (PER LEVEL). THE EXCAVATED SOILS WILL BE USED TO RAISE THE ARENA GREEN EAST SO THAT THE BRIDGES CLEAR EXISTING PATHS AND MONUMENTS AND REDUCES SOIL EXPORT.

EACH TOWER HAS AN "ORGANIC VEIL" MADE FROM GLU-LAM BEAMS THAT CREATE AN OPPORTUNITY FOR INTEGRATED LIGHTING AND PLANTING, BRINGING THE LONG HISTORY OF GLU-LAM CONSTRUCTION IN CALIFORNIA INTO THE FUTURE. POCKET GARDENS WITH SITTING AREAS AT THE BASE OF EACH BRIDGE OFFER MORE INTIMATE AREAS TO REFLECT AND VIEW THE COMPLEX. OBSERVATION DECKS AT THE TOP OF EACH TOWER OFFER VIEWS OVER THE ENTIRE SILICON VALLEY.

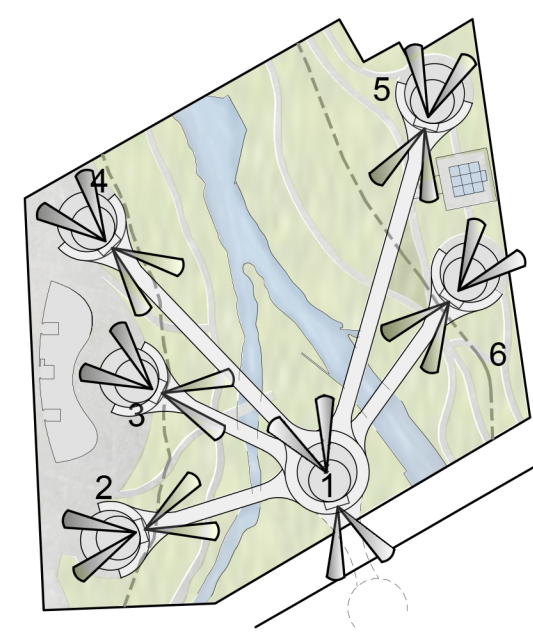
PROJECTION BOOTHS LOCATED IN THE ROOFS OF EACH TOWER CAN ALLOW INTERACTIVE LIGHTING AND/OR HOLOGRAMS TO BE PROJECTED OVER THE RIVER OR ONTO THE OTHER TOWERS.

THE SVLT MUSEUM WILL BE AN INTERNATIONAL ICON FOR ALL TO EXPERIENCE.





## 6 LIGHT TOWERS



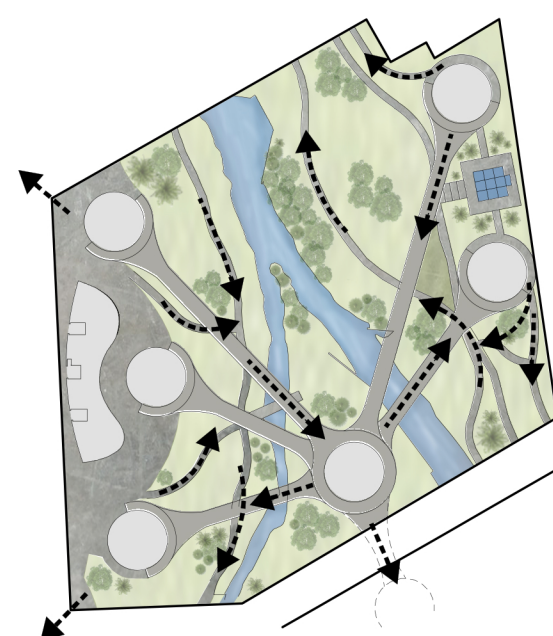
\*REACH OUT TO DIFFERENT AREAS OF CITY (SILICON VALLEY).

\*EXPAND HISTORICAL PRECEDENT OF ORIGINAL LIGHT TOWER OF SAN JOSE.

\*CREATES MANY PROGRAMMABLE LIGHTING OPPORTUNITIES: ENVELOPE, RIBS, BRIDGES. EACH TOWER EXHIBITS A DIFFERENT AREA OF MANKIND'S RELATIONSHIP WITH S.V. TECHNOLOGY.

1. OVERVIEW
2. INFORMATION & MANUFACTURING
3. SCIENCE & MEDICINE
4. GOVERNMENT & BUSINESS
5. ENVIRONMENT & AGRICULTURE
6. CULTURE & SOCIETIES

## CIRCULATION

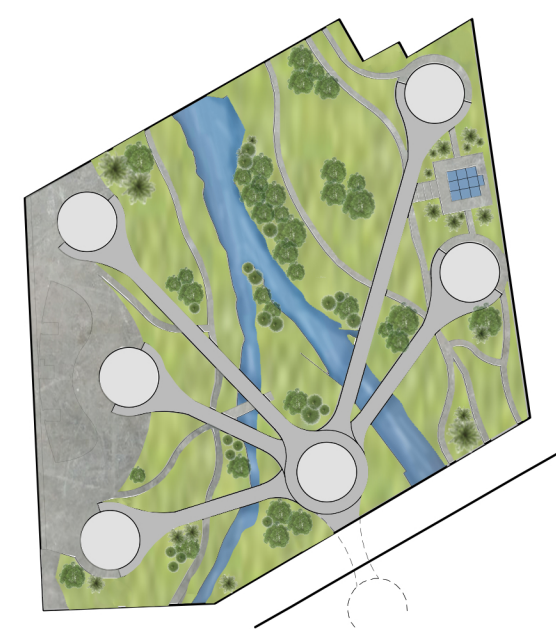


\*EXISTING PATHS AND EXISTING BRIDGE REMAIN & NEW PATHS SEAMLESSLY CONNECT WITH THEM.  
\*OPEN EDGES AROUND PERIMETER TO INVITE PARTICIPATION.

\*ACCESS TO ENTRANCE OF ARENA AND EXISTING MONUMENTS ENHANCED.  
\*RAISED BUILDINGS ALLOW FLOW THROUGH PUBLIC PLAZAS AND CONTROL MUSEUM ACCESS.

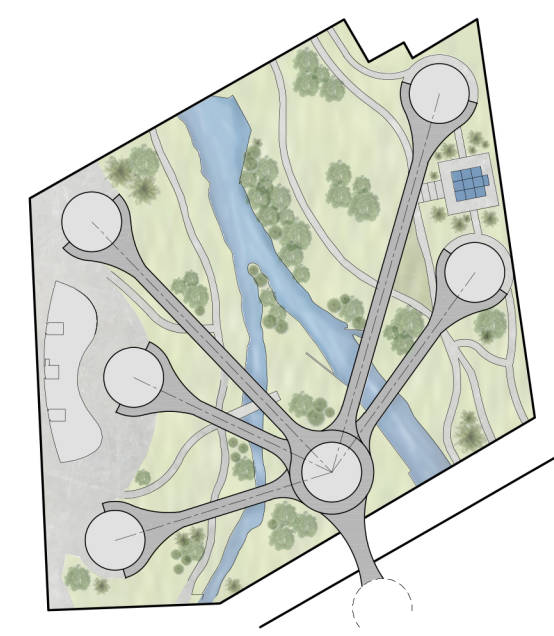
\*BRIDGES CLEAR EXISTING PATHS AND GRASS AREAS.  
\*AN APPROXIMATELY 120 CAR SUBTERRANEAN PARKING GARAGE ALLOWS PARKING FOR EMPLOYEES AND ADMINISTRATION BUILDING.

## ENERGY / GREEN NET ZERO STRATEGY



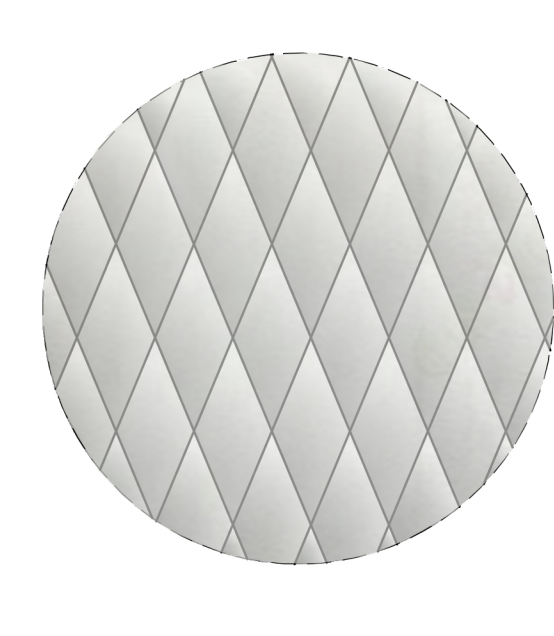
\*ALL TOWERS OFFER SOFT NATURAL DAYLIGHT THROUGH TRANSLUCENT ENVELOPE.  
\*FRITTED GLAZING CONTROLS GLARE AND HEAT GAIN WHILE ALLOWING VIEWS OUT. EXISTING RIVER & RIPARIAN AREAS UNDISTURBED.  
\*EXISTING FOLIAGE ALONG RIVER BANKS REMAINS. EXCAVATED SOILS FROM UNDERGROUND PARKING AREA AND FOOTINGS USED TO RAISE ARENA GREEN EAST (MINIMAL EXPORT).  
\*BUILDINGS & BRIDGES MADE FROM CONCRETE, GLU-LAM WOOD, STEEL & RECYCLED COMPOSITE PANELS.  
\*ALL TOWERS HAVE FULL SOLAR PANEL ARRAY ON ROOFS.

## BRIDGES



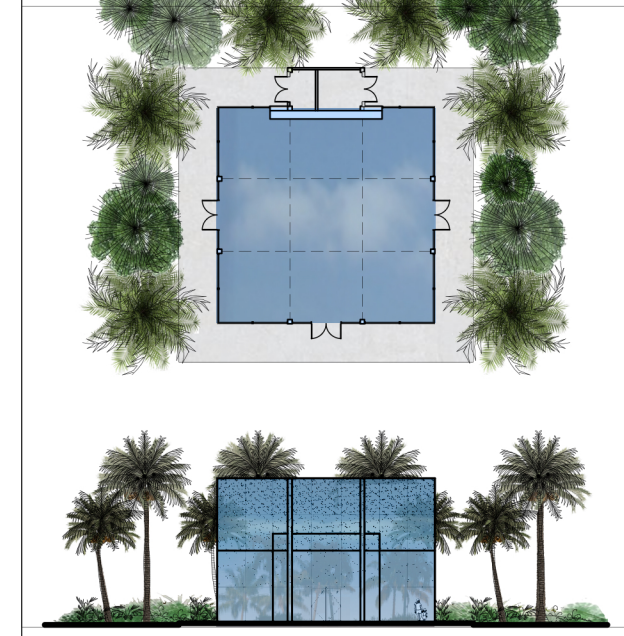
\*BRIDGES SYMBOLIZE SILICON VALLEY'S ABILITY TO CONNECT MILLIONS OF PEOPLE  
\*IN BAY AREA HISTORY BRIDGES ARE A SYMBOL OF BAY AREA.  
\*THEY CLEAR SPAN THE RIVER AND RIPARIAN AREAS.  
\*THEY CREATE OPPORTUNITIES TO EXPERIENCE RIVER.  
\*THEY CREATE EXCELLENT INTERACTIVE LIGHTING OPPORTUNITIES.  
\*BRIDGES ARE WIDE ENOUGH TO ALLOW ART FAIR BOOTHS OR FARMER'S MARKET BOOTHS TO BE ALONG ONE SIDE.

## ENVELOPE



\*INSULATED "PILLOWED" TRANSLUCENT DIAMOND PANELS (PREFERABLY MADE FROM RECYCLED CIRCUIT BOARDS OR OTHER TECHNOLOGY)  
\*ALLOW SOFT DAYLIGHTING IN EXHIBIT SPACES AND DRAMATIC BACK-LIGHTING EFFECTS AT NIGHT.  
\*UPLIGHTING AROUND THE INTERIOR PERIMETER OF EACH FLOOR BACKLIGHTS THE ENVELOPE. THESE LIGHTS CAN BE PROGRAMMED FOR DRAMATIC LIGHTING SEQUENCES.

## GLASS CUBE



\*THE GLASS CUBE IS A ONE-OF-A-KIND EVENT SPACE FOR UP TO 120 PEOPLE.  
\*GRADATED FRITTED GLASS ON THE ROOF AND WALLS CREATES DAPPLED SUNLIGHT.  
\*A TWO STORY WATER WALL SCREENS FREEWAY AND AIRPLANE NOISE. SURROUNDED BY A DENSE FOREST OF TREES, IT BECOMES A CLASSIC FOR PHOTO SESSIONS, WEDDINGS AND RECEPTIONS.  
\*MECHANICAL AND STORAGE ROOMS ARE HIDDEN BEHIND WATER WALL.