

THE TUBULAR PATH _ board 1

THE TUBULAR PATH, and its large suspended ring draws all attention, the 2000 feet of interior path gives our proposal its iconic character. It is an element of union between environment and a learning path. It provides perspectives of the correct union of nature and the city. Proposal that highlights the meeting point of San José with the Guadalupe River and Los Gatos Creek. The intervention aims to symbolize a pairing between nature and sustainable future, and how learning and evolution go hand in hand.

image 03

The interior path of the ring is organized in four areas, its beginning and end are arranged in the same vertical element.

Area **A**, implanted in the East side area and destined for fairs, exhibitions, it is a space that even being part of the path, allows us to host both public or private events.

Area **B**, footbridge over the Guadalupe River, an element that does not impact the riparian habitat and is respectful with the existing trees.

Area **C**, already on the west side of the river, is the beginning of the ascending route, an area of coexistence with its surroundings, it has pedestrian ramps that are located at the height of the vegetation.

As a construction process there are 2 steps, steps intended to be fully respectful of the implementation instructions required by the contest.



-  Step 1: The southern walkway or suspended ring, sector that is structurally supported in the intervention areas, east and west, reaches a free height of 60 feet above the ground.
-  Step 2: The northern walkway, sector of the ring literally deposited on the ground, is nothing more than an adaptation of the spaces adjacent to the intervention, it gives continuity to the idea and the whole with a lighter and more respectful structure with the environment. A footbridge is as well part of the structure deposited on the ground.



image 04

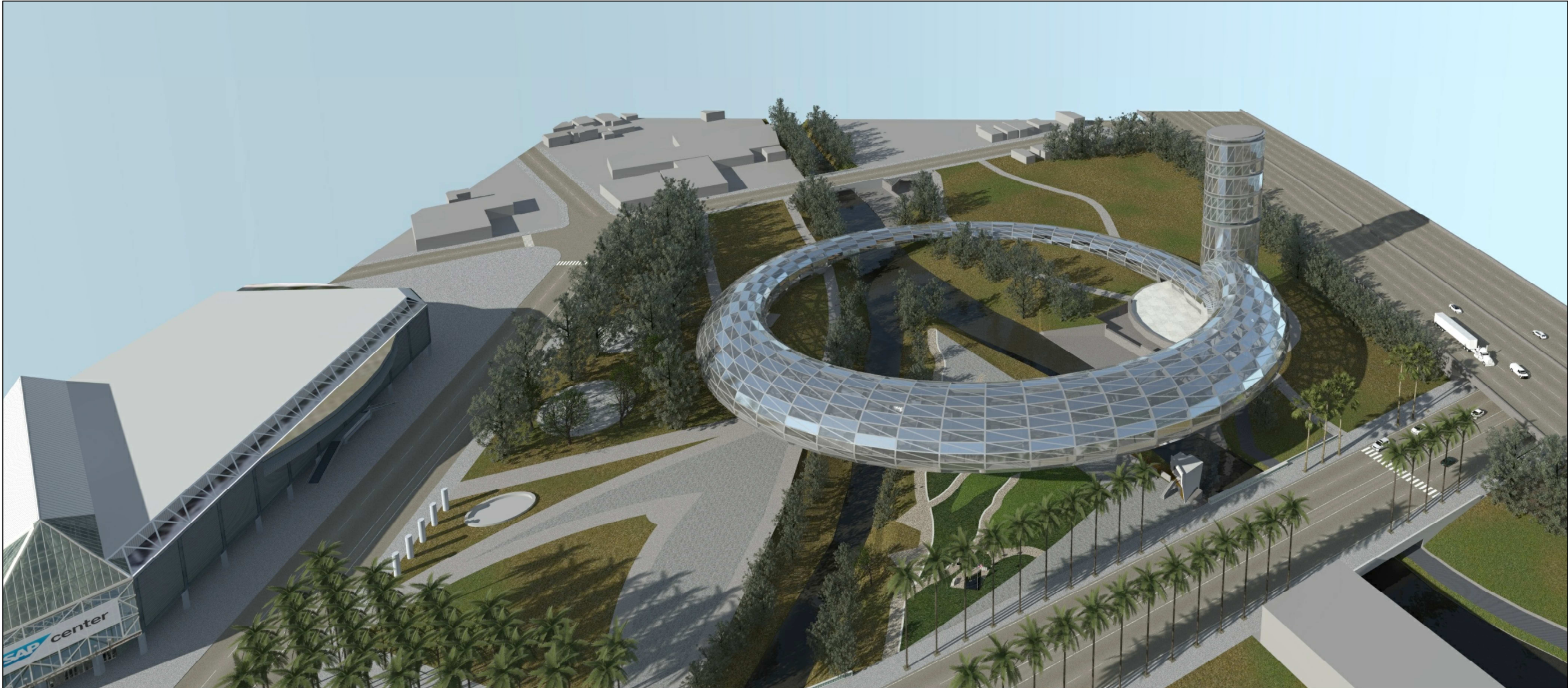


image 05

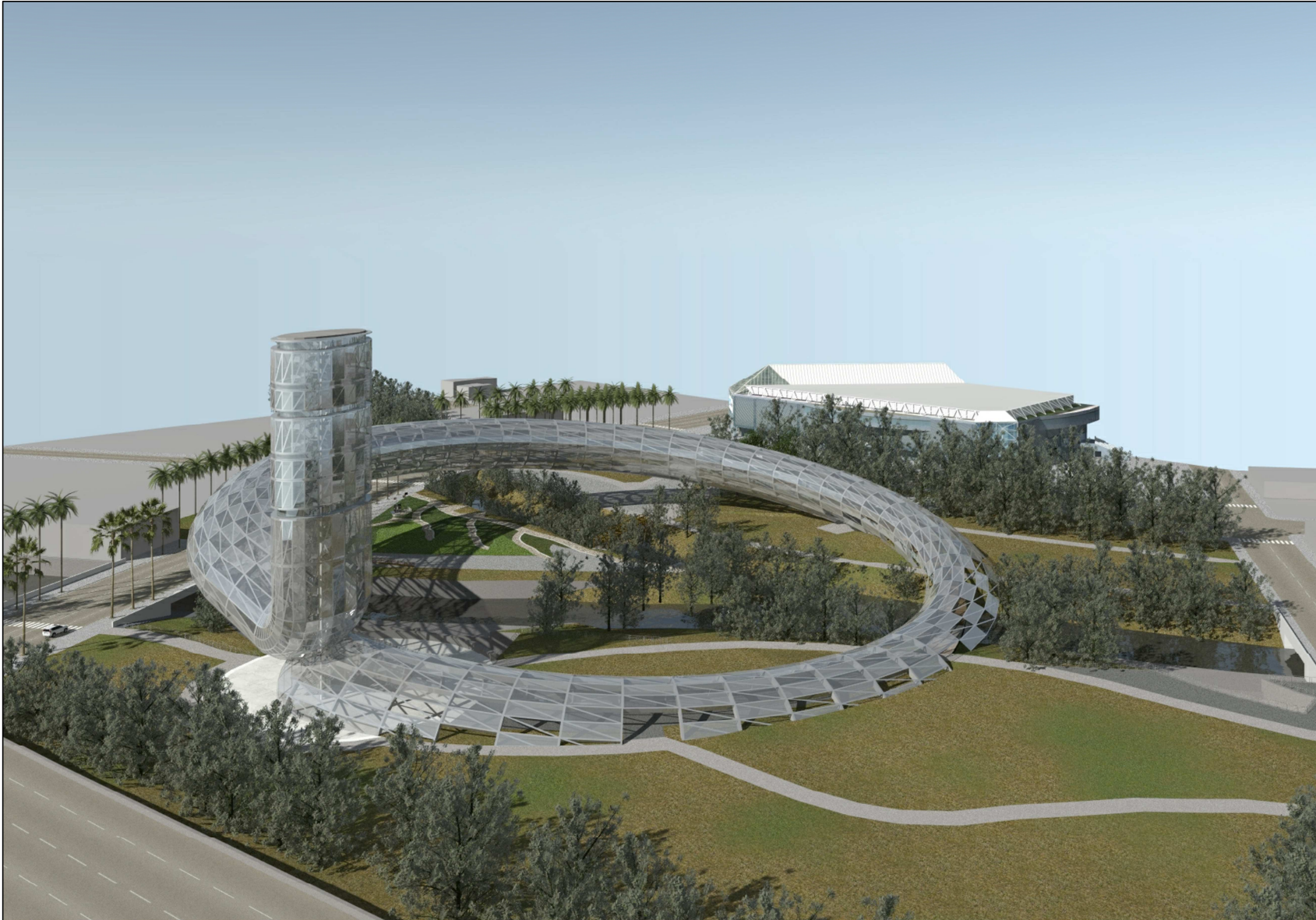
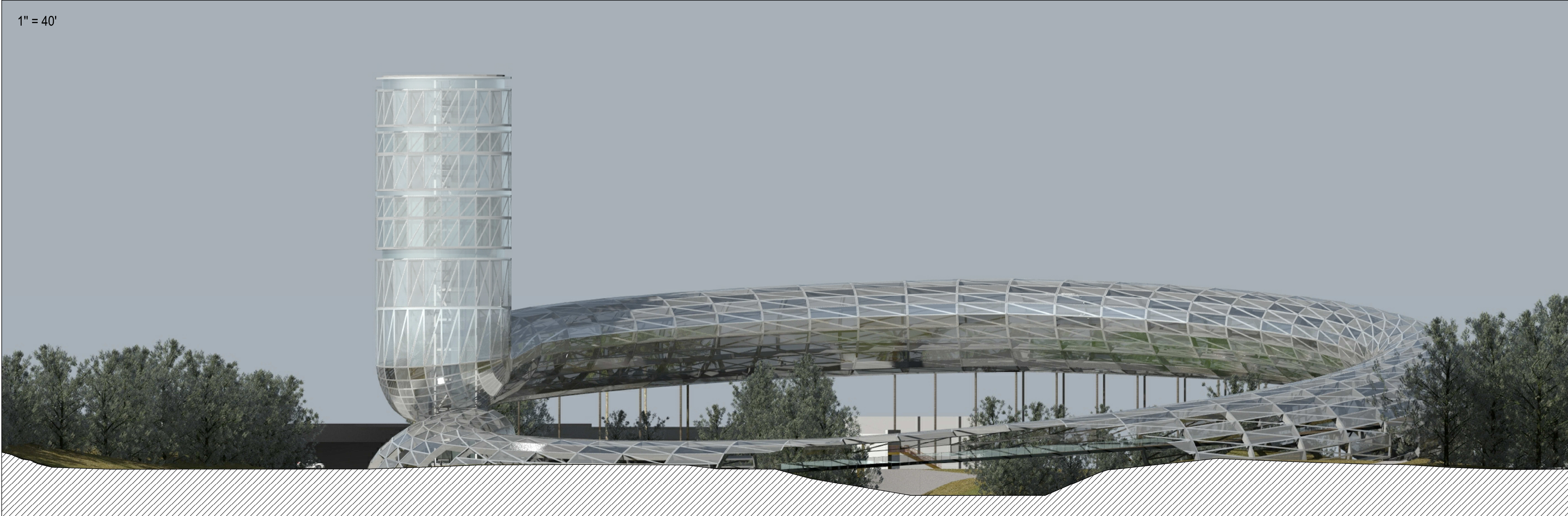


image 06



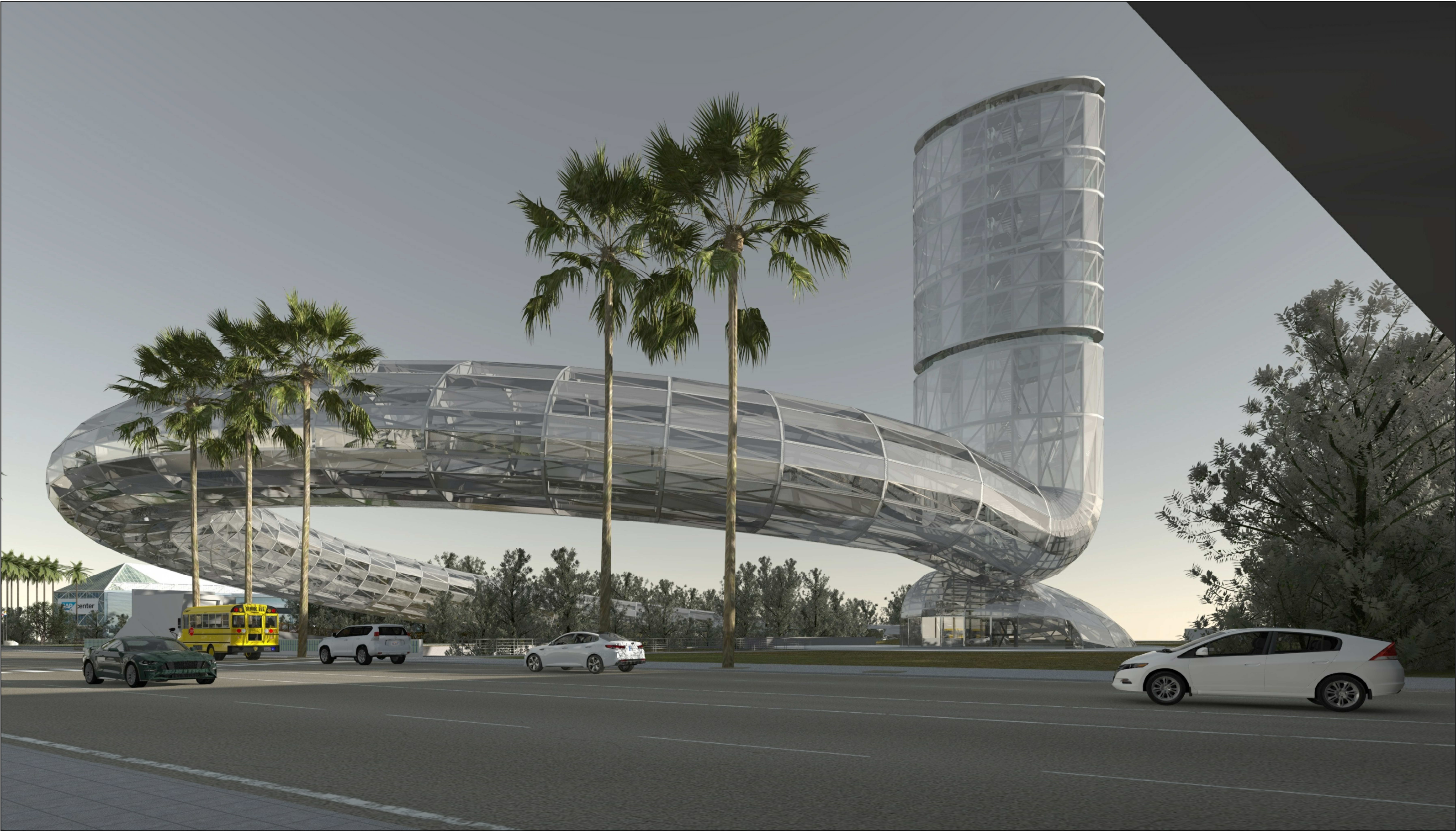


image 01

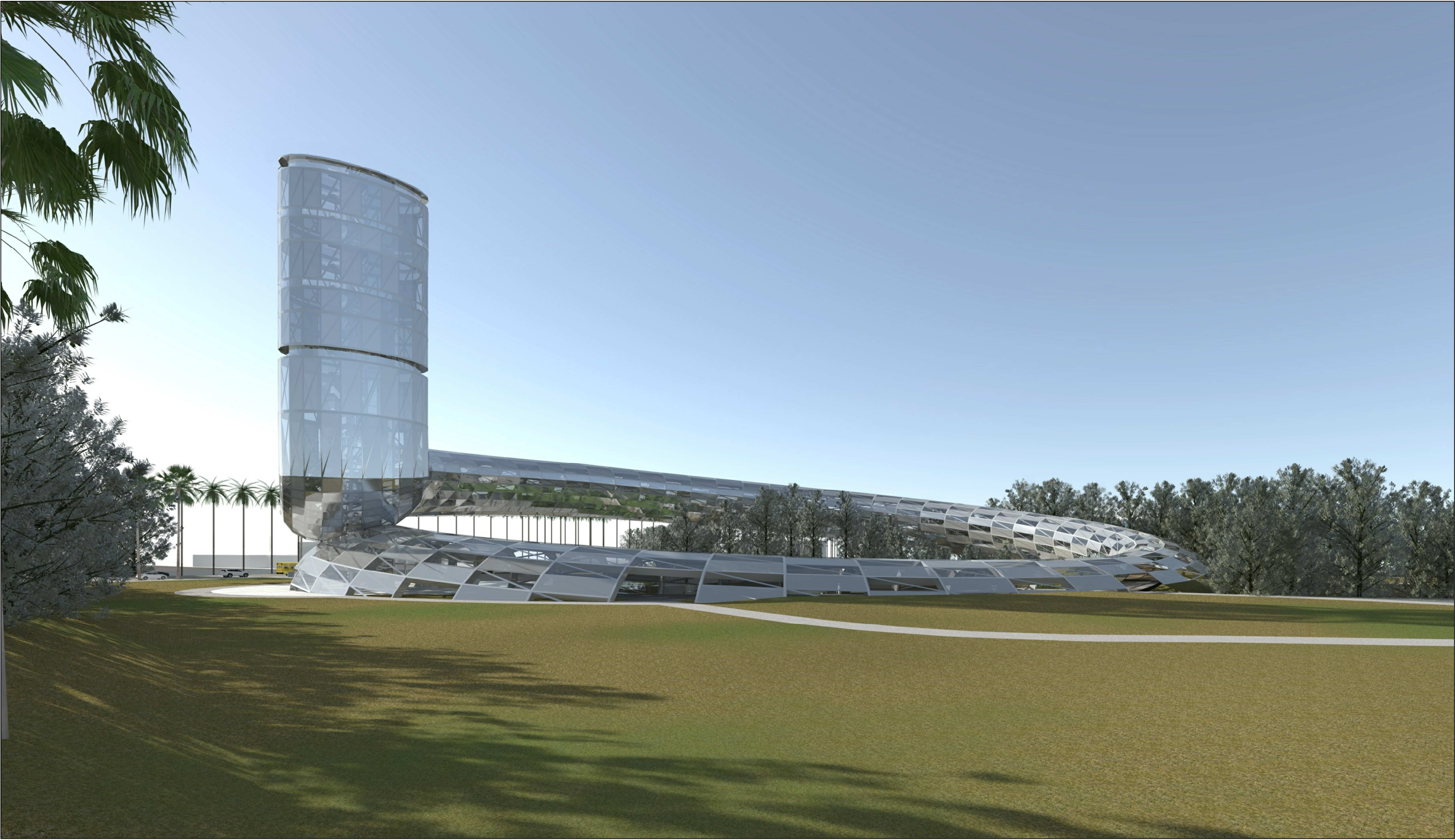


image 02

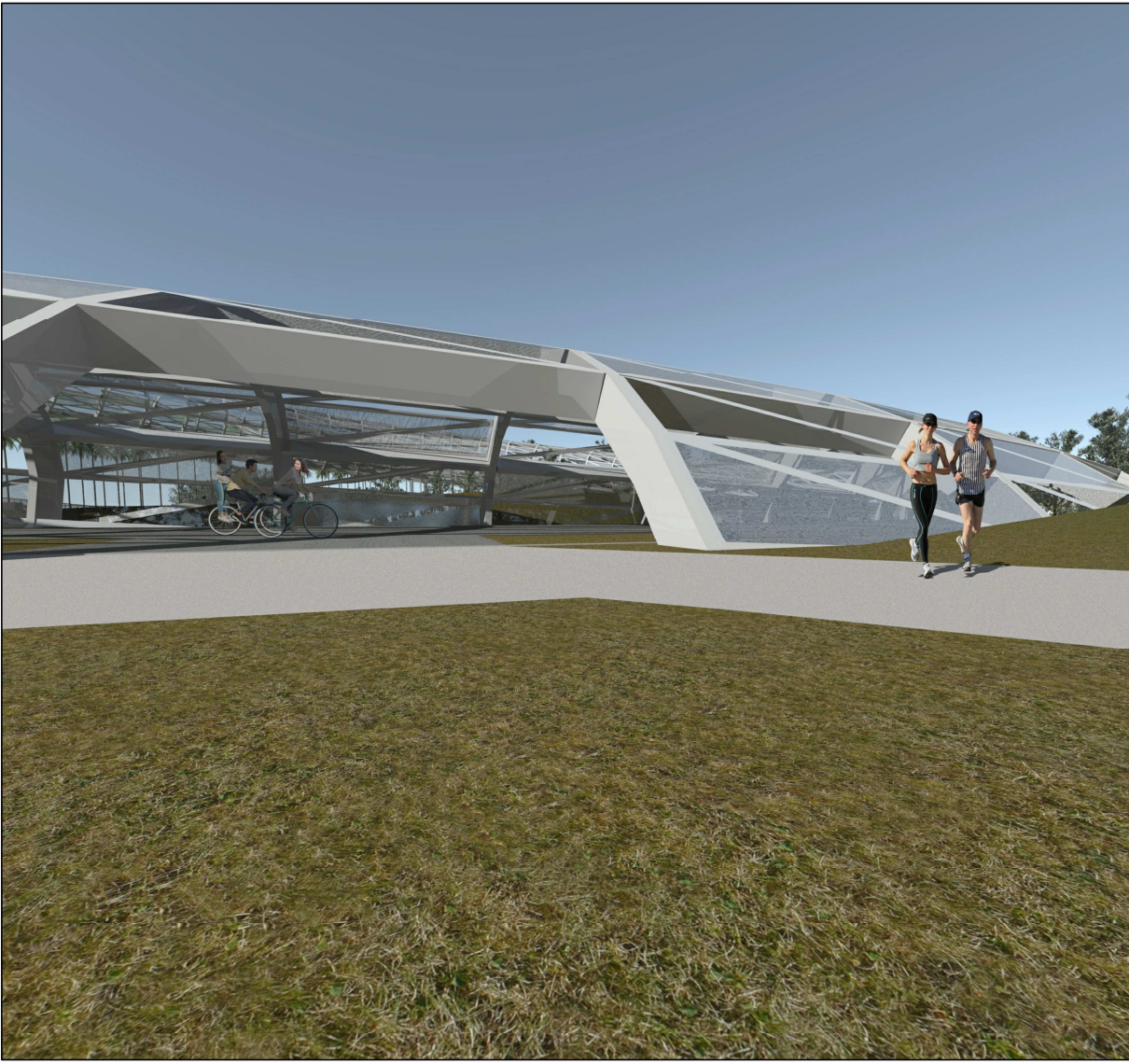


image 08

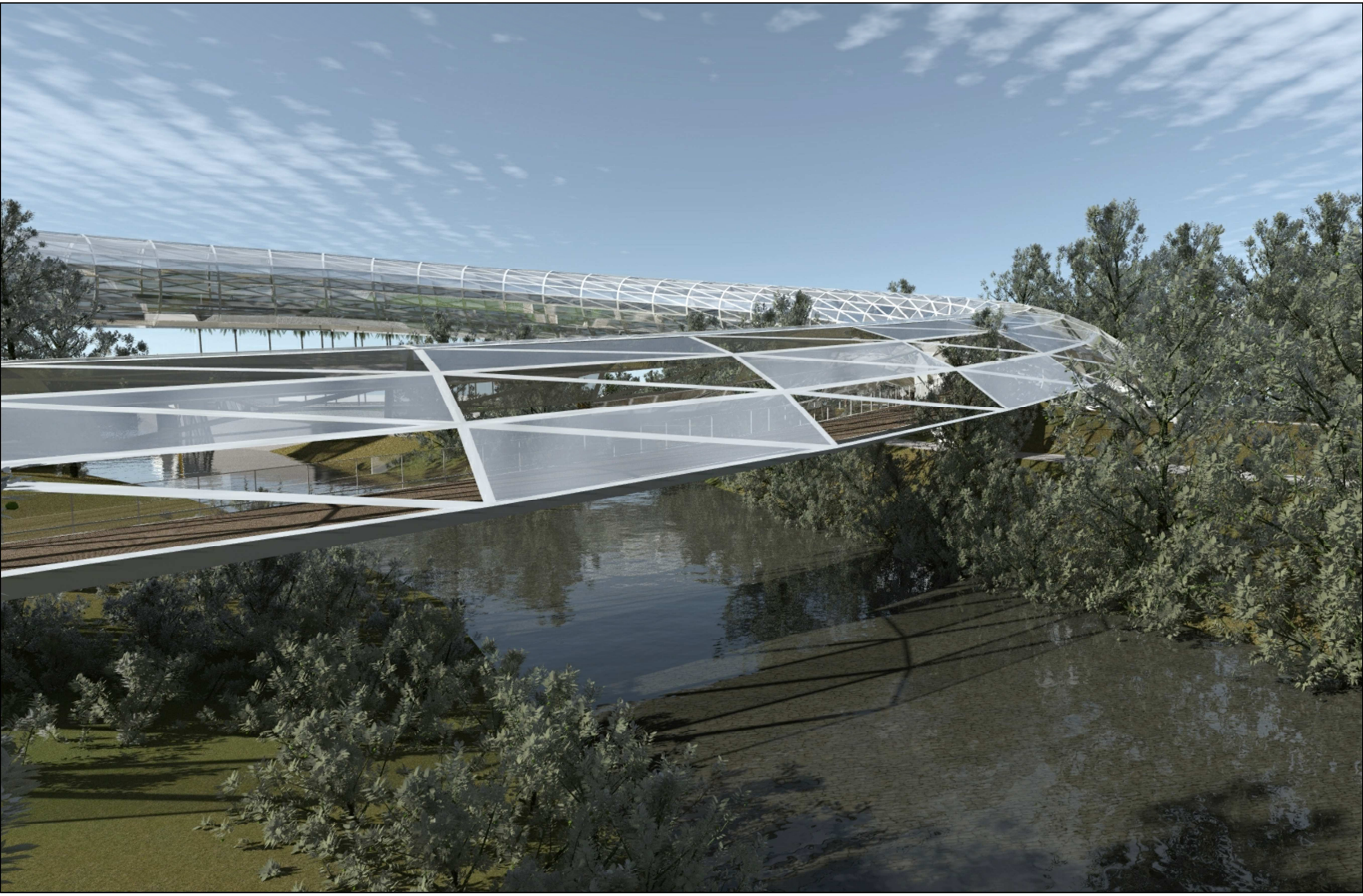


image 09

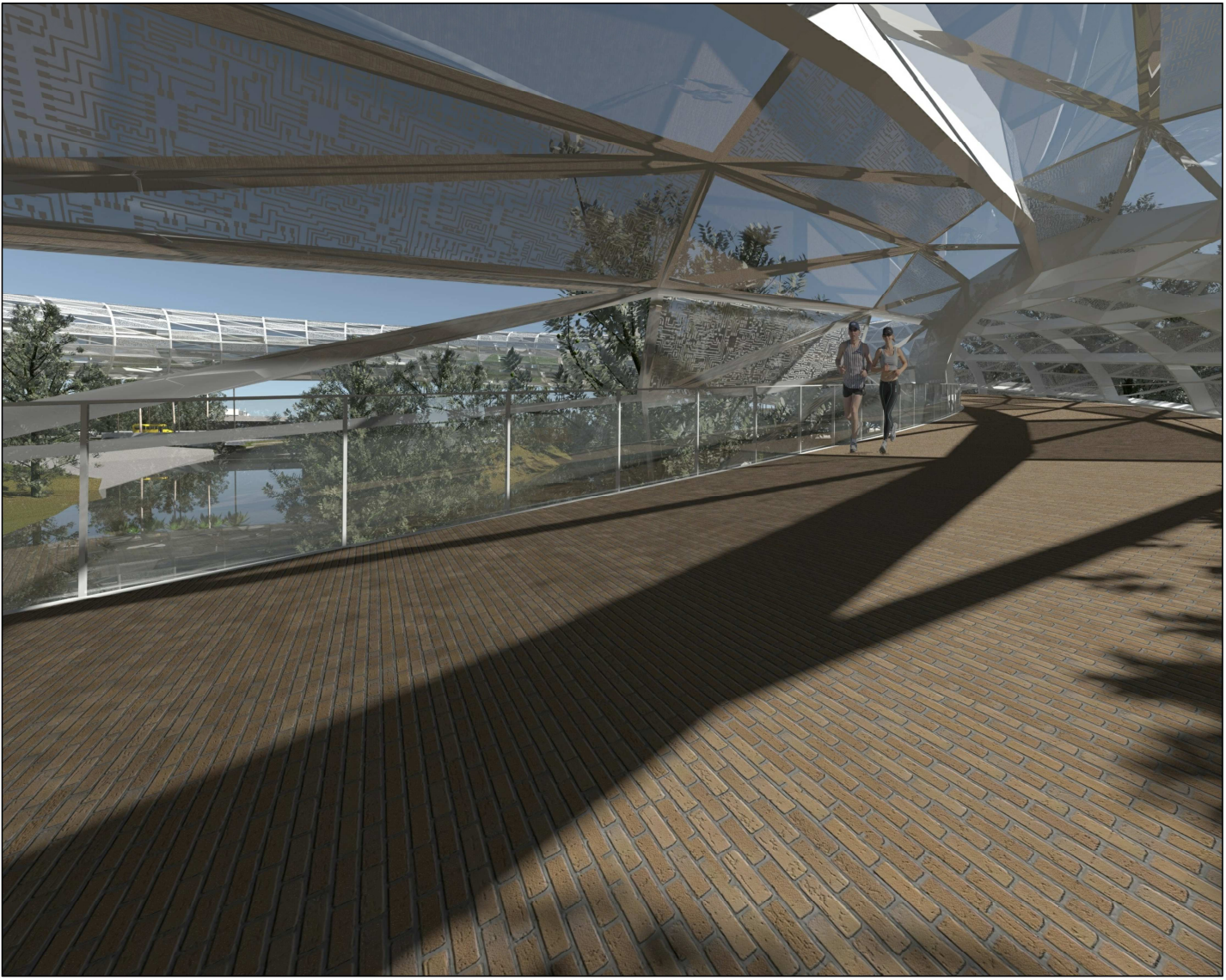


image 010

image 11

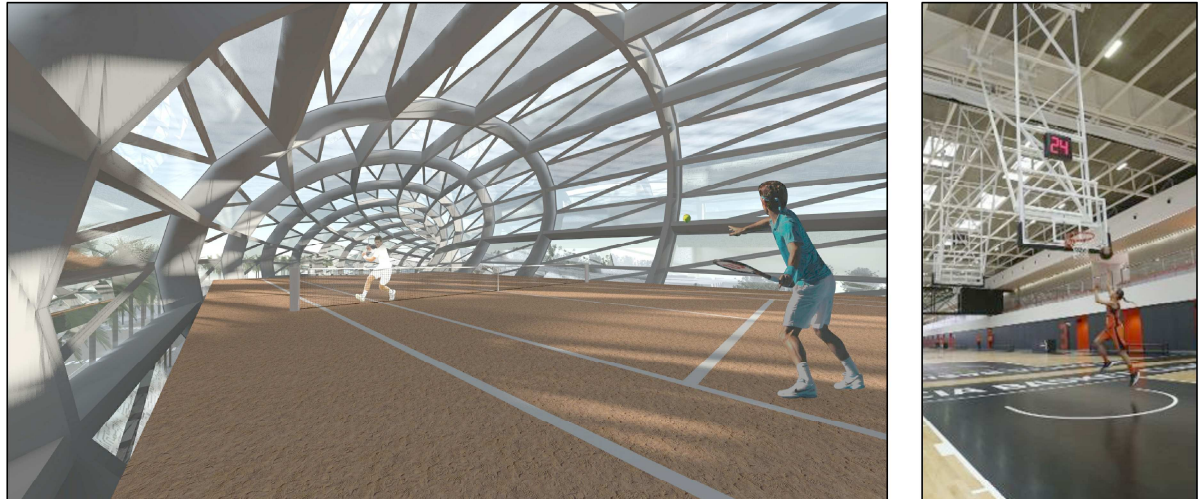


image 07

Area D is quite the suspended ring, with pedestrian routes, where the sports facilities that existed in the East side can also be relocated; the fact of having transformed the location of the sports facilities into green areas makes it easier to understand our proposal as a true icon. It is not only an element that achieves visibility from the highway, but also from its proximity, from the south or from the north, as depicted in the images that are provided.

At the end of all this pedestrian route we reach the vertical section of our proposal, stairs and elevators lead us to the top, and inside this final section there are several exhibition rooms, an observatory, environmental research rooms as well as a bar restaurant.