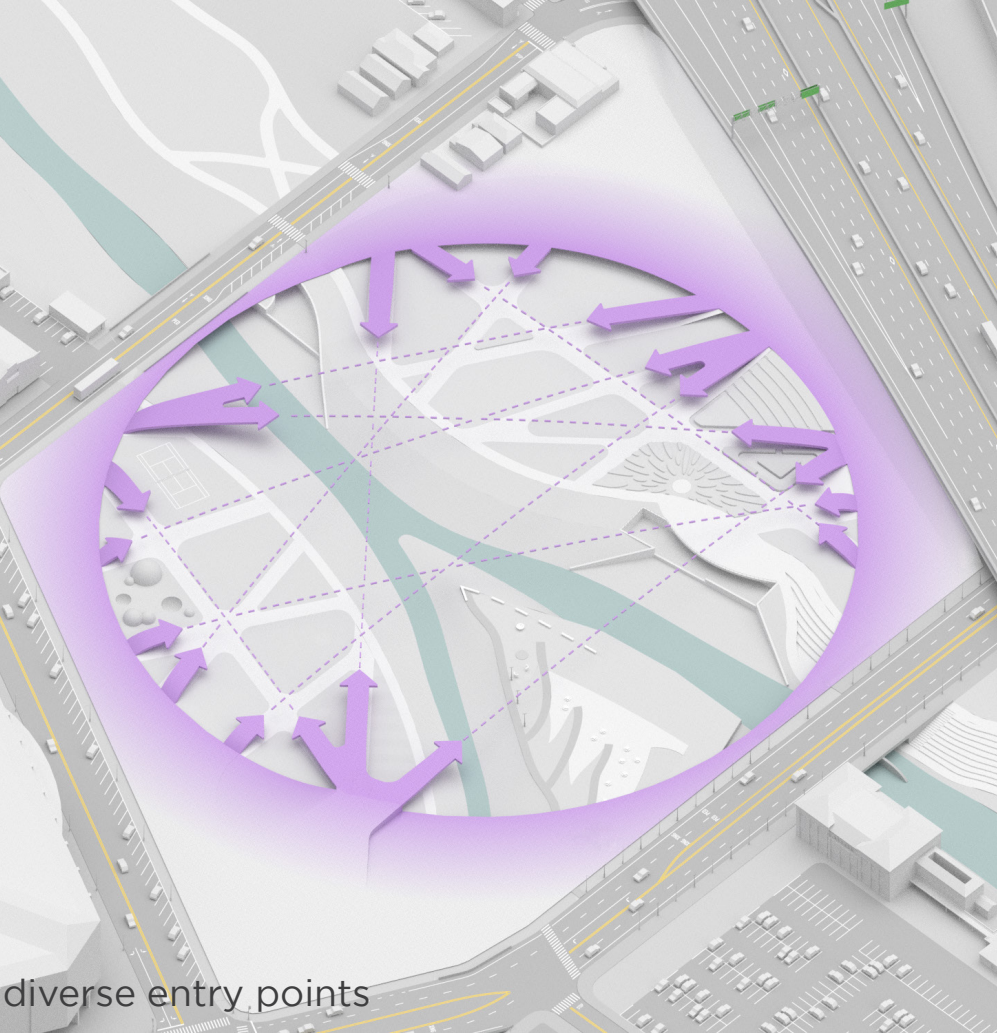
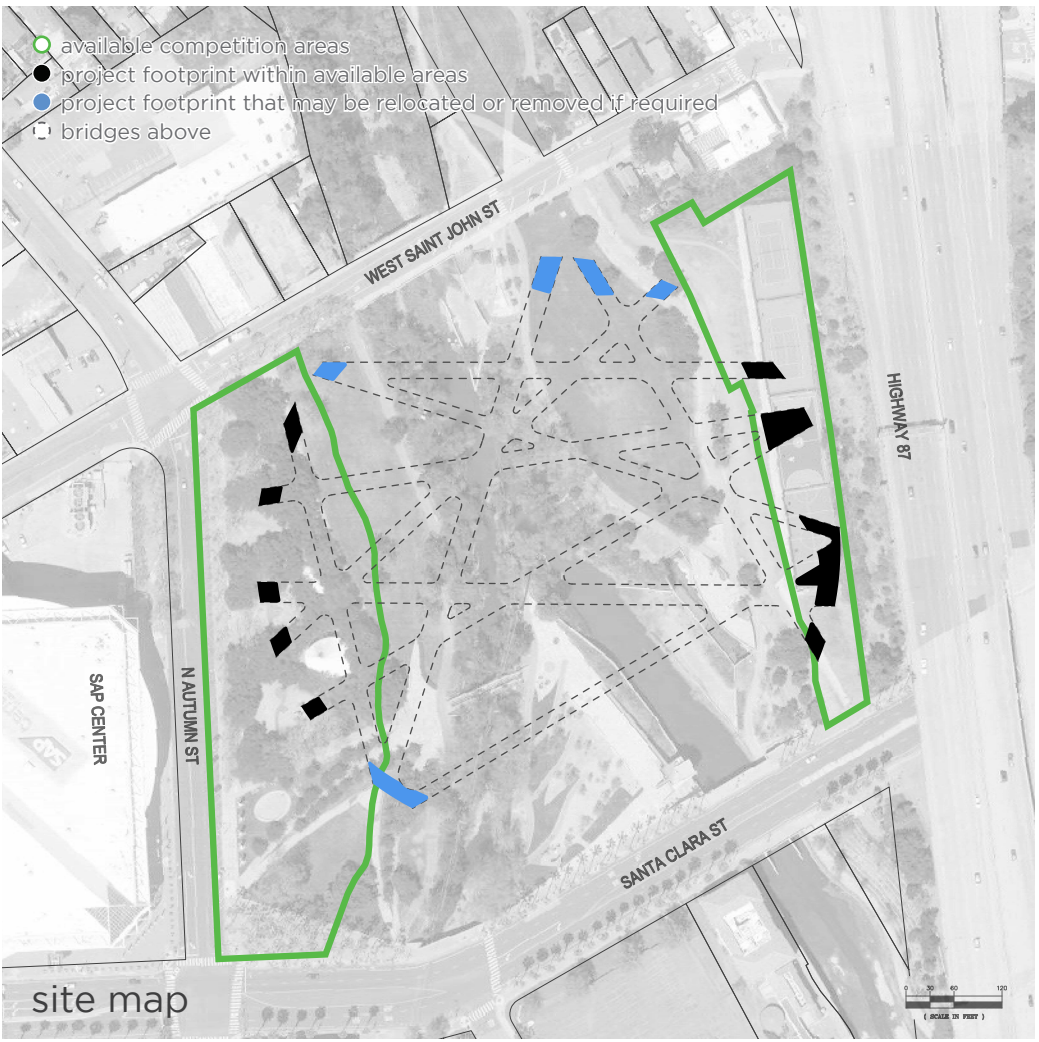
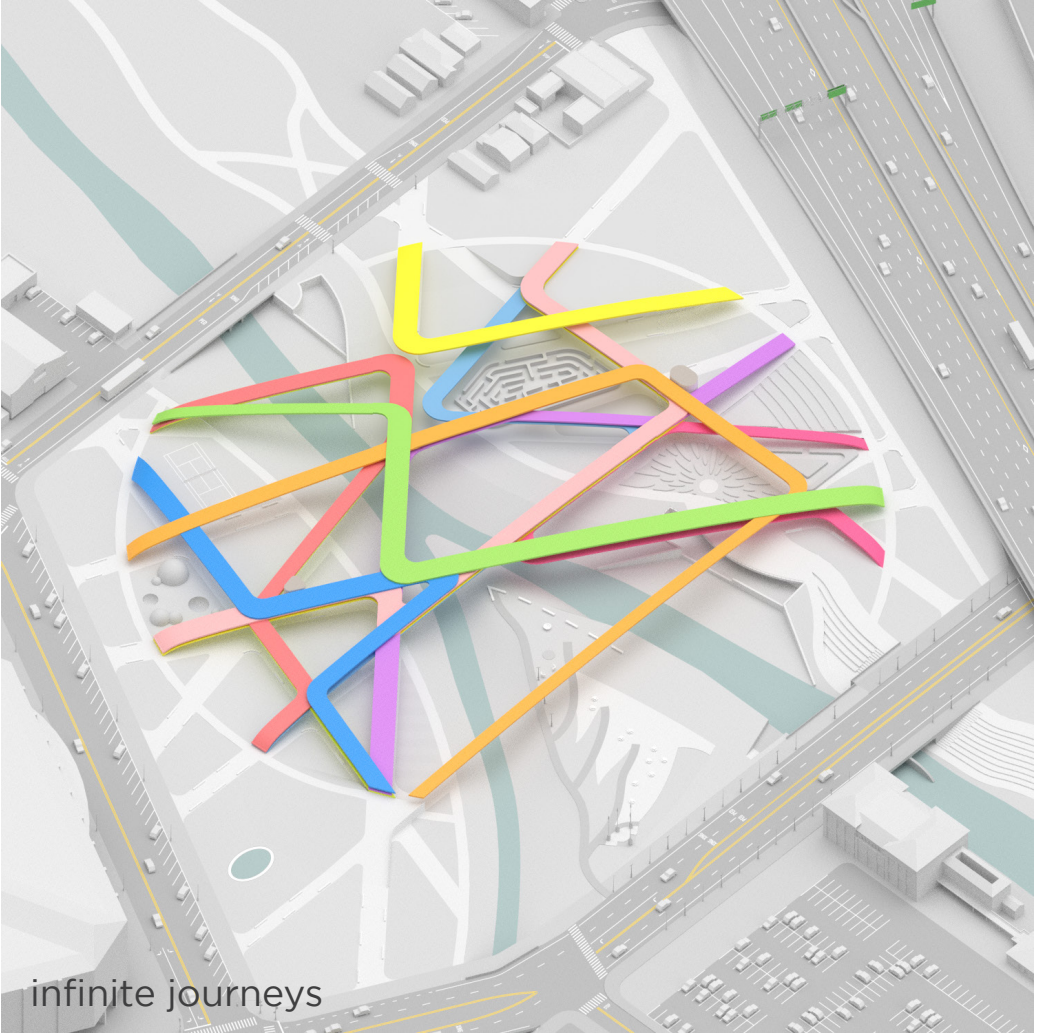


AURORA

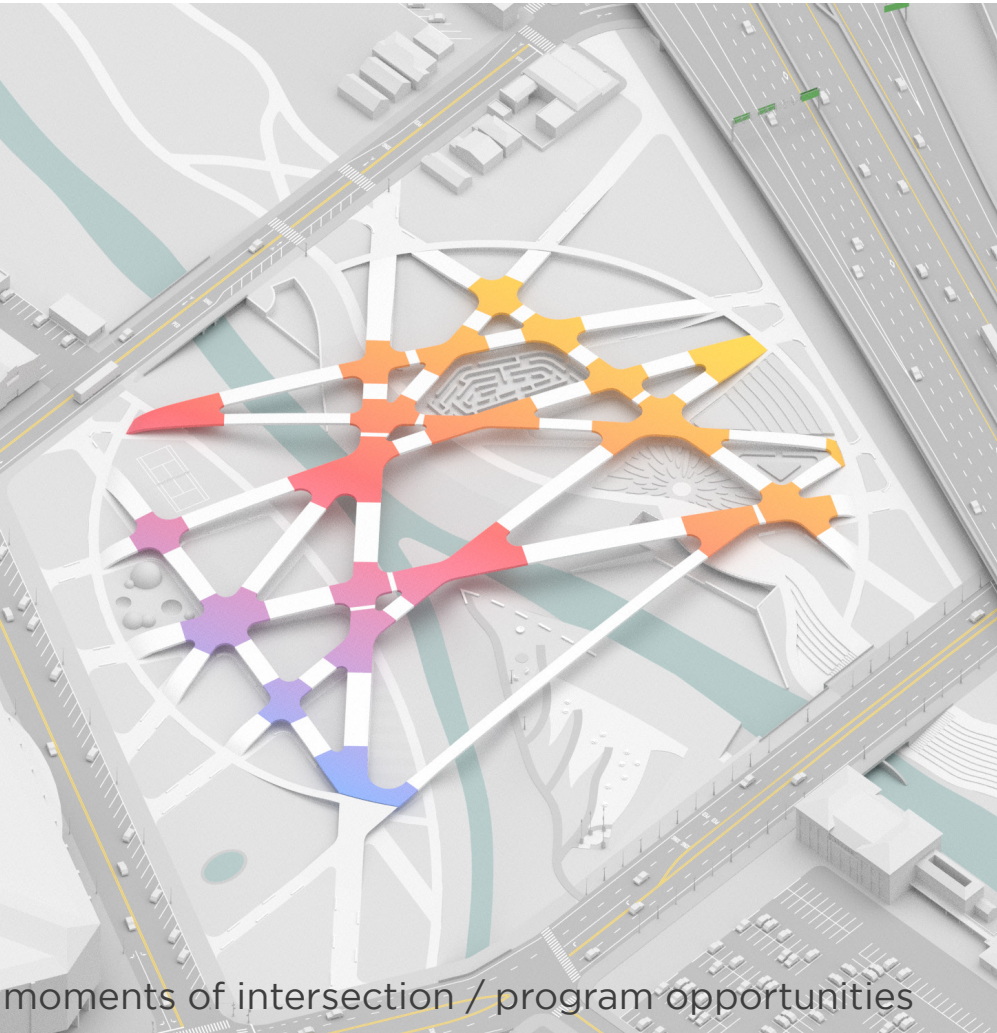
From the Bering Strait to the Golden Gate, bridges have connected people throughout the course of history. While the principle purpose of this ancient form of infrastructure has been to get from point A to point B, Aurora focuses on the journey in between. Inspired by the confluence of Guadalupe River and Los Gatos Creek, Aurora unites a multitude of entrances, trajectories, and moments of intersection into a network of possibilities and an infinite range of journeys. Aurora's gentle arc allows the public to experience nature at multiple tiers, from ground level, to striding alongside leaves, to peaking above the canopy. The project functions as an iconic piece of civic hardware that comes alive through human engagement and a diverse mosaic of programmed spaces designed to bring people together and spark interaction and discovery.



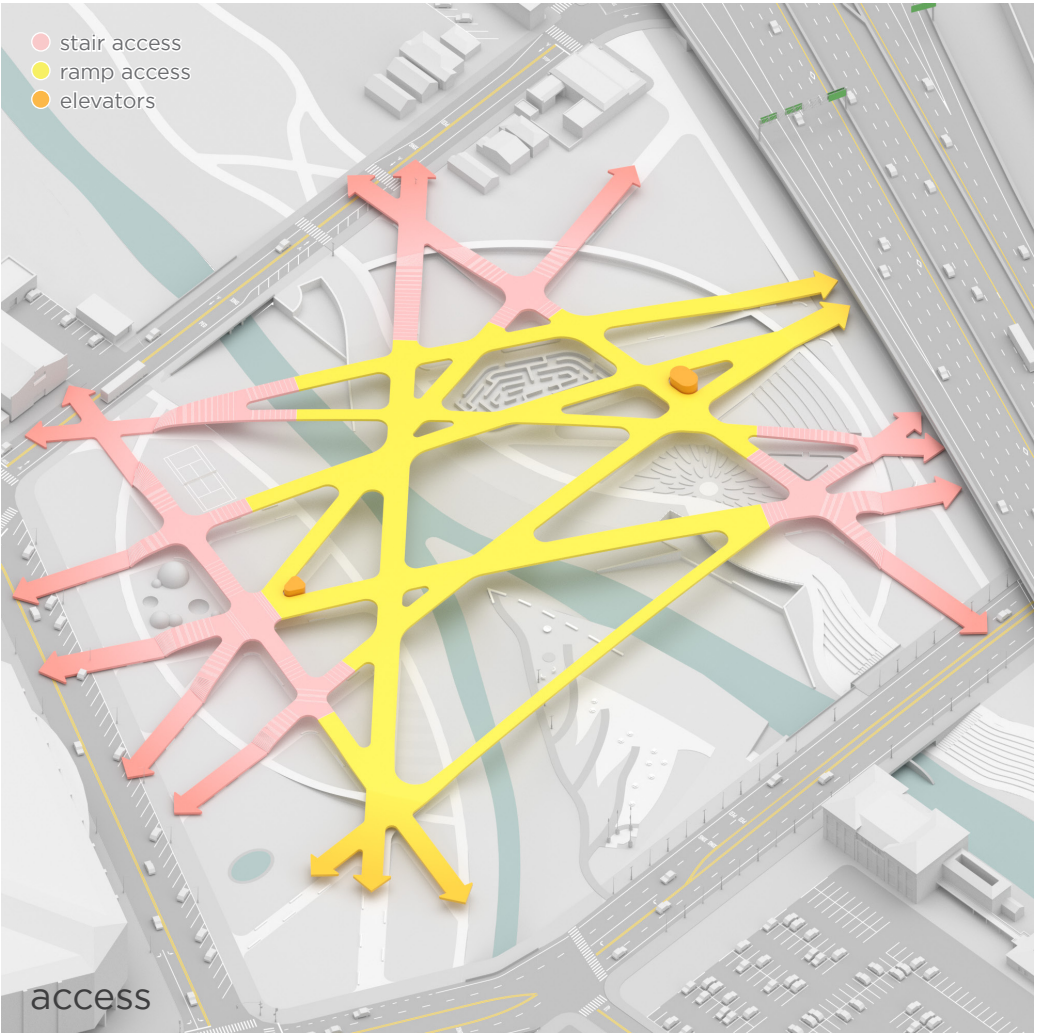
diverse entry points



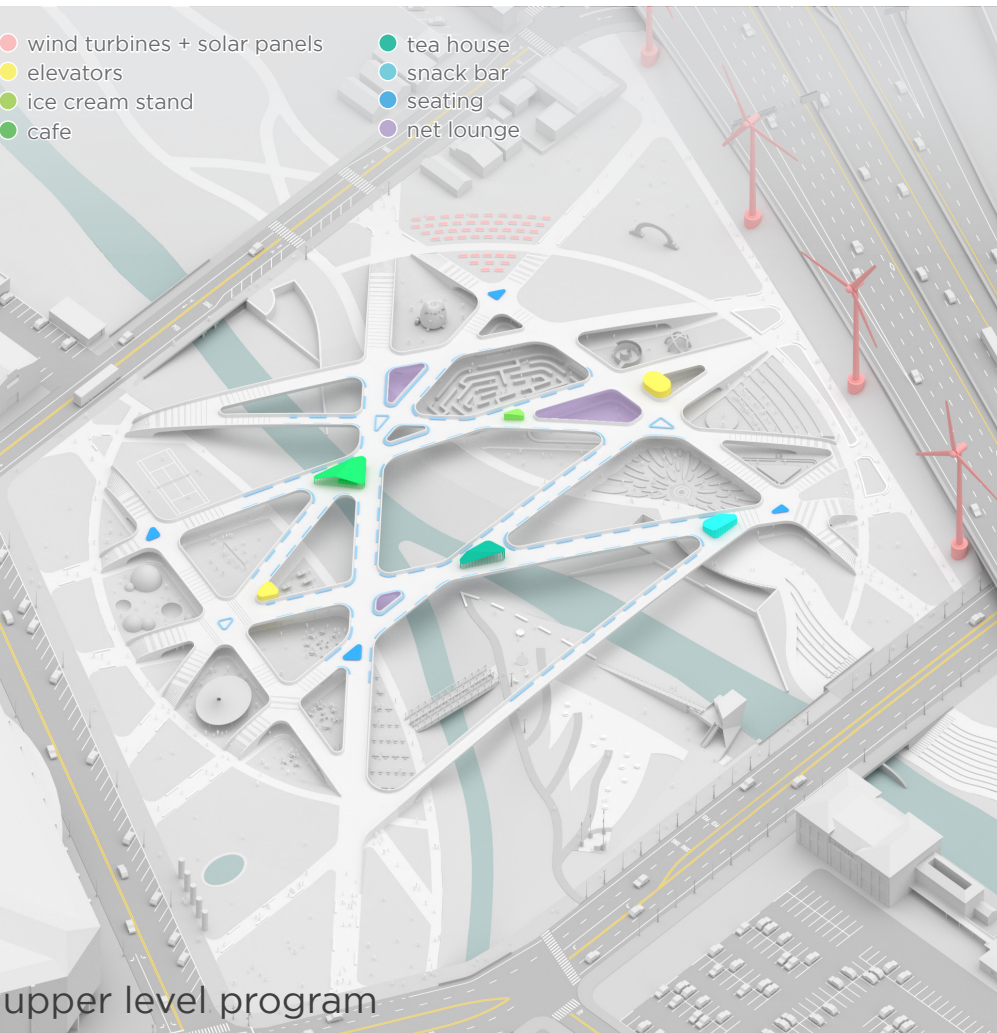
infinite journeys



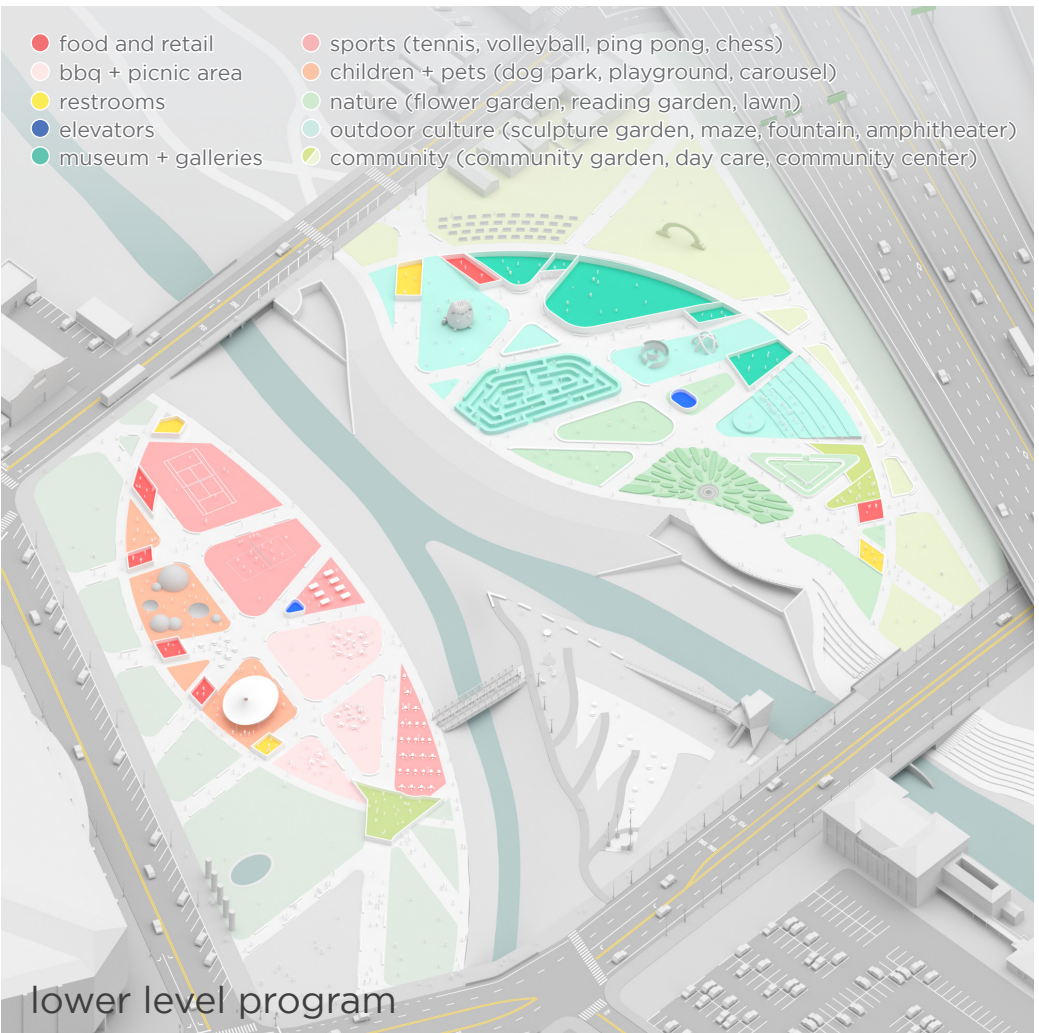
moments of intersection / program opportunities



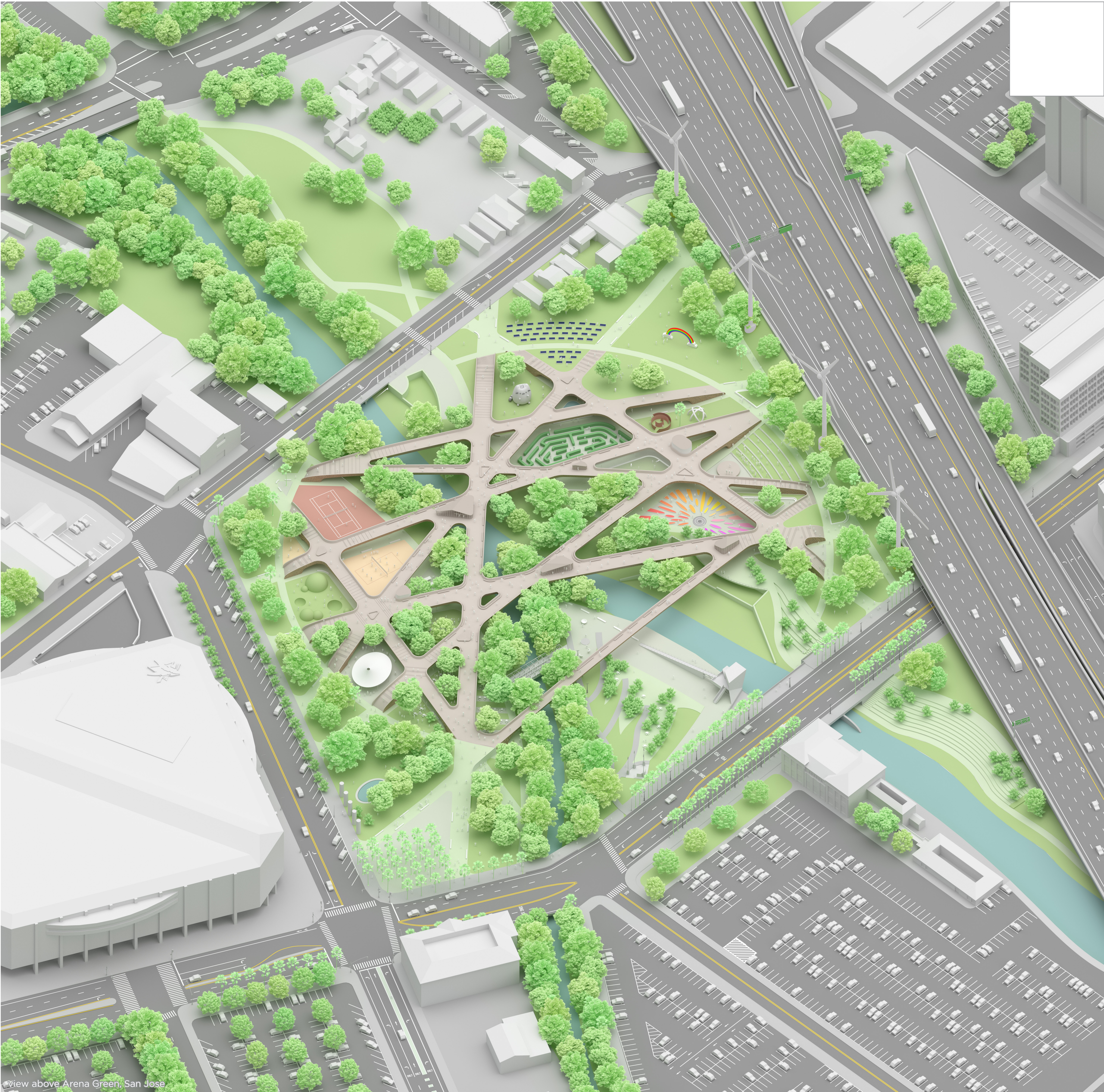
access



upper level program



lower level program



View above Arena Green, San Jose

