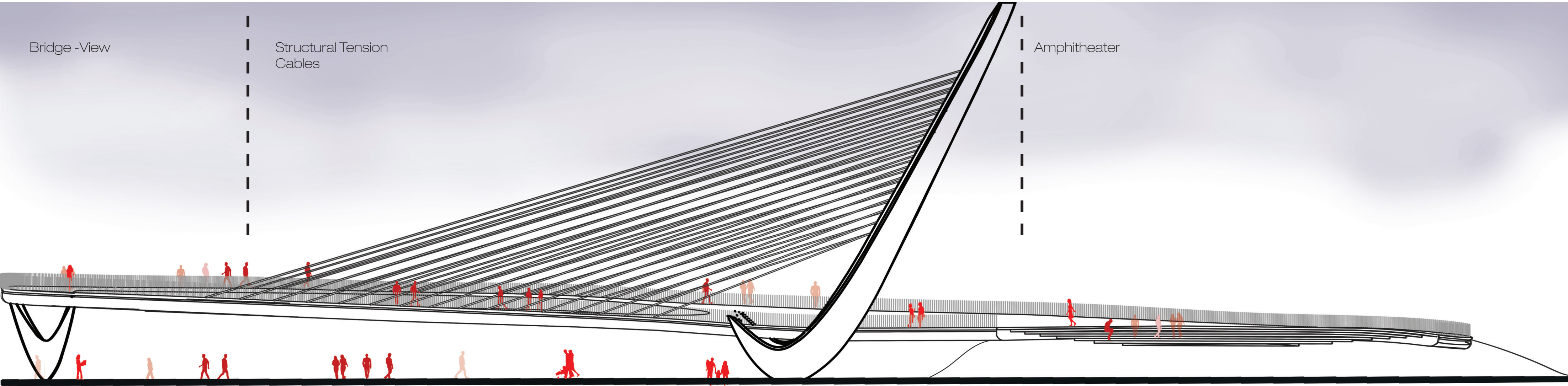
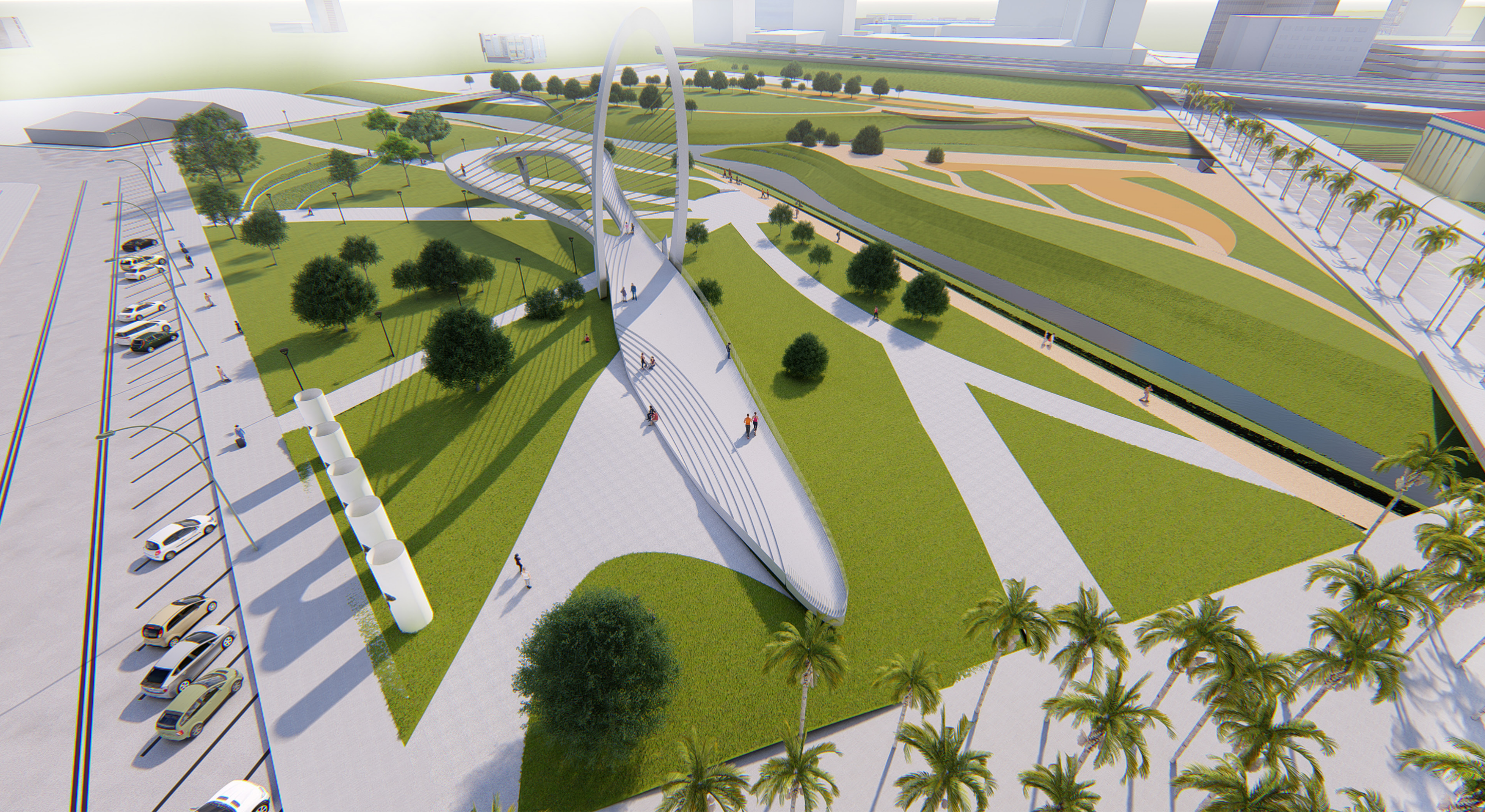


SITE PLAN





A panoramic bridge

The required structural stability for the elevated edges is provided by tension cables extending to the high tower.

The proposal is organized in order to allow visitors to connect directly with the landscape. While connecting with the landscape the structure offers an open anfi-theatre as an activated landscape. The wired celebrates human and nature interaction through simple architectural gesture while maintaining as a place of great public destination.

