

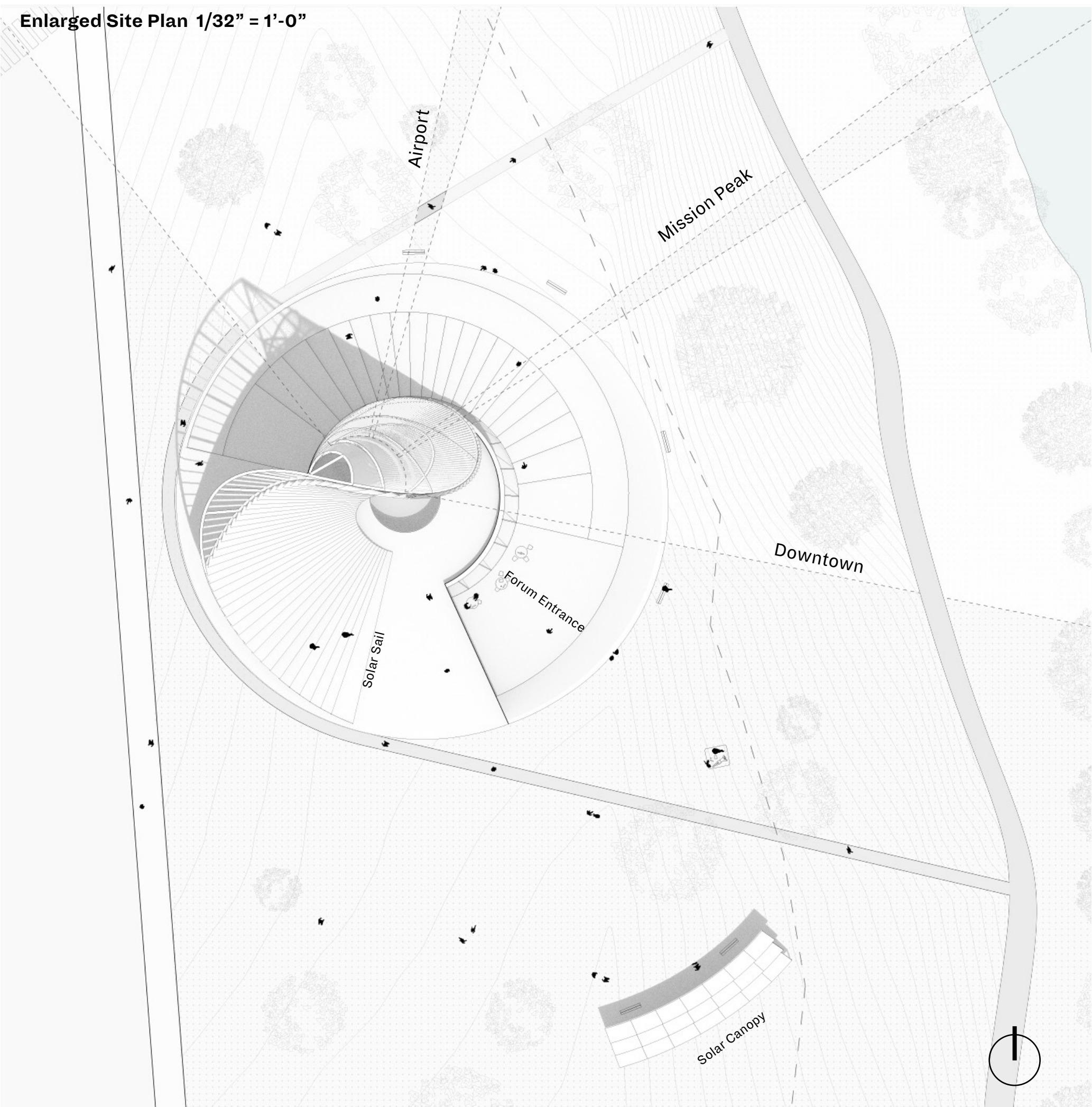


# Arena Park Lumen

Lumen draws inspiration from the innovative and socially vibrant context of San Jose, using geometry and light to highlight innovation, community, and environment. Our proposal offers a space to appreciate the city's natural and built setting and integrates a public engagement program for events and learning. Lumen aims to be a synthesis of icon and commons.

Our design strategy merges two typologies of architecture: an observation tower, and a circular forum. Referencing the conical geometry of the former San Jose Electric Light Tower, Lumen retools and highlights the cone's salient geometric qualities for an integrative design approach.

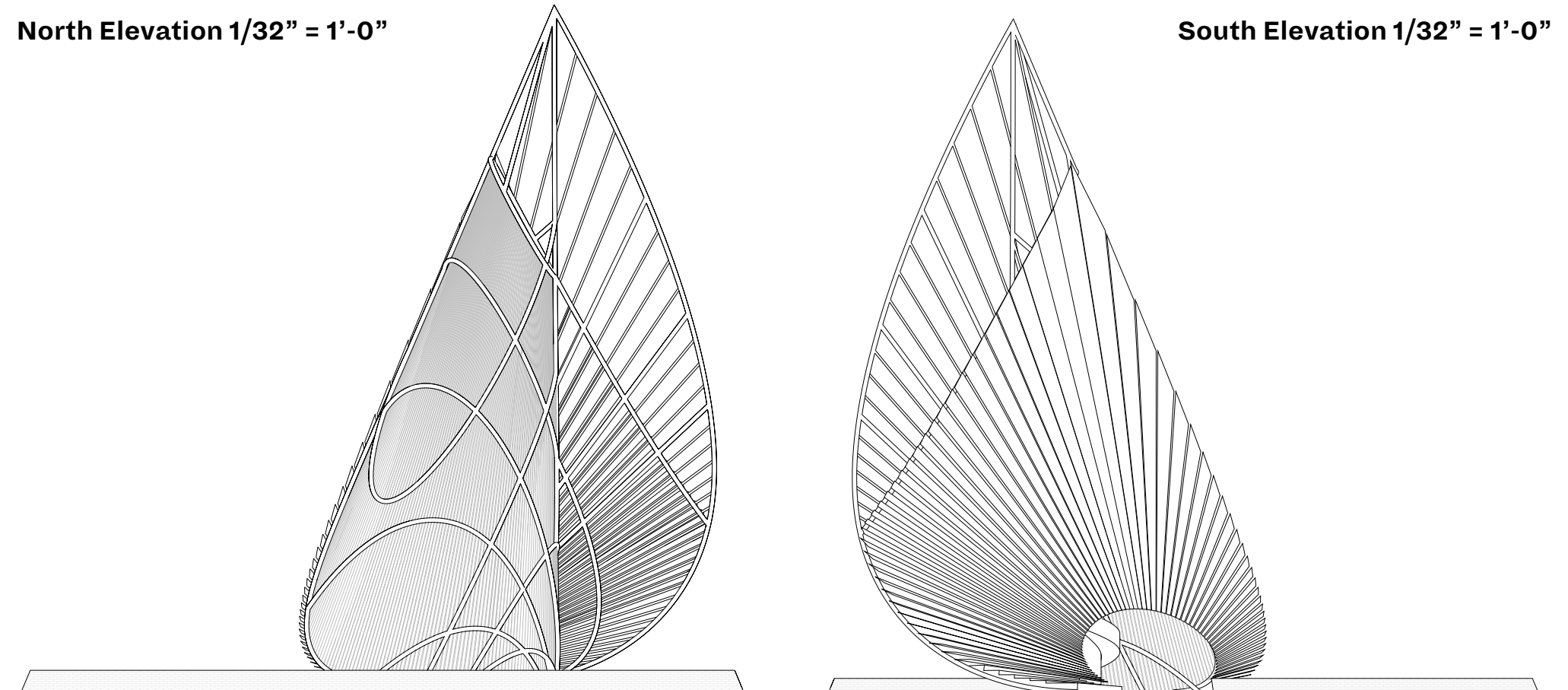
LED lights powered by the large solar surface light up at night providing views to surrounding San Jose



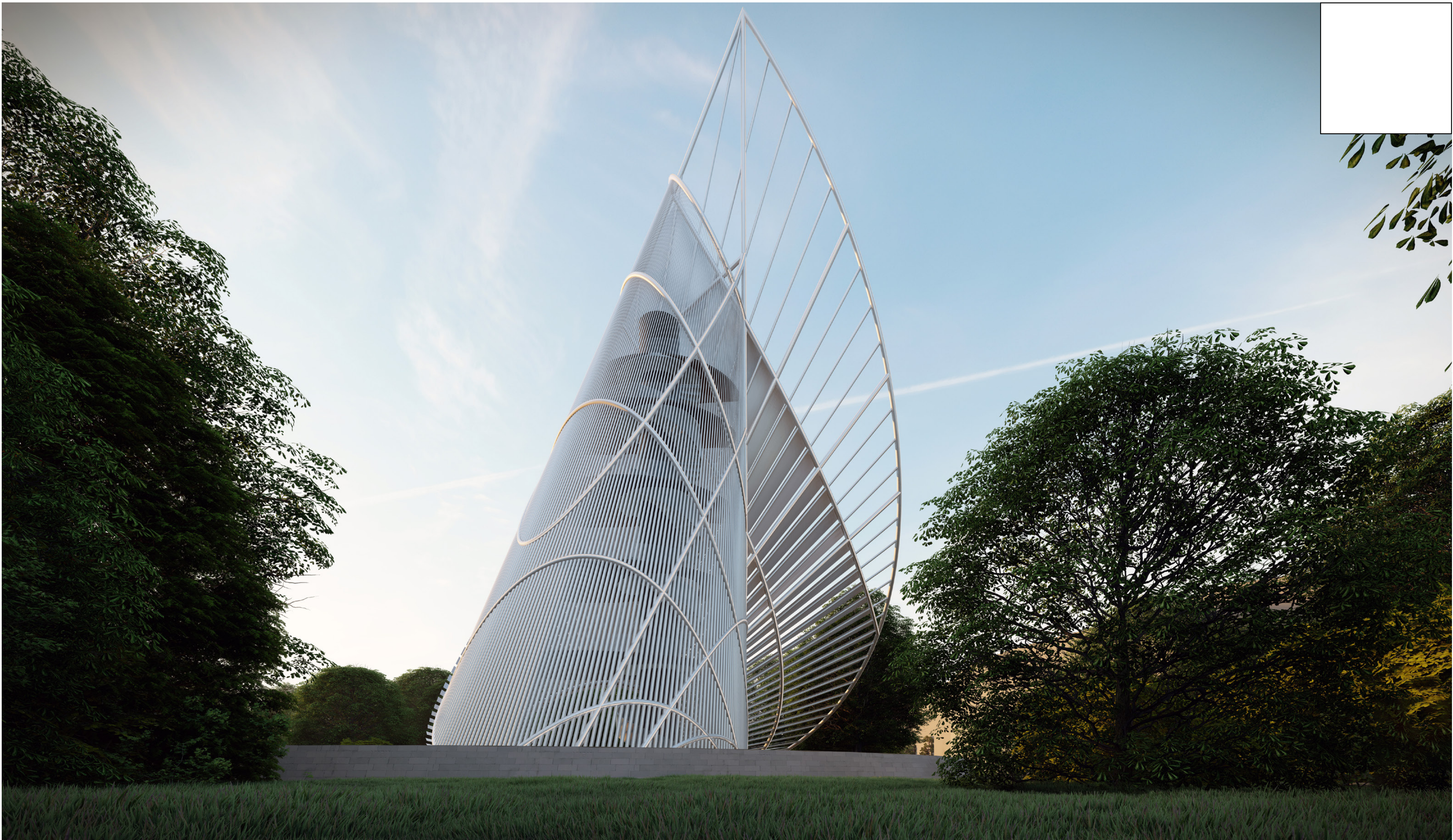
An array of solar surfaces light up at night to provide a captivating backdrop for photographers



Stairs and a ramp lead down to an underground multi-use platform, housing amenities such as a book store, coffee bar, and a community theatre

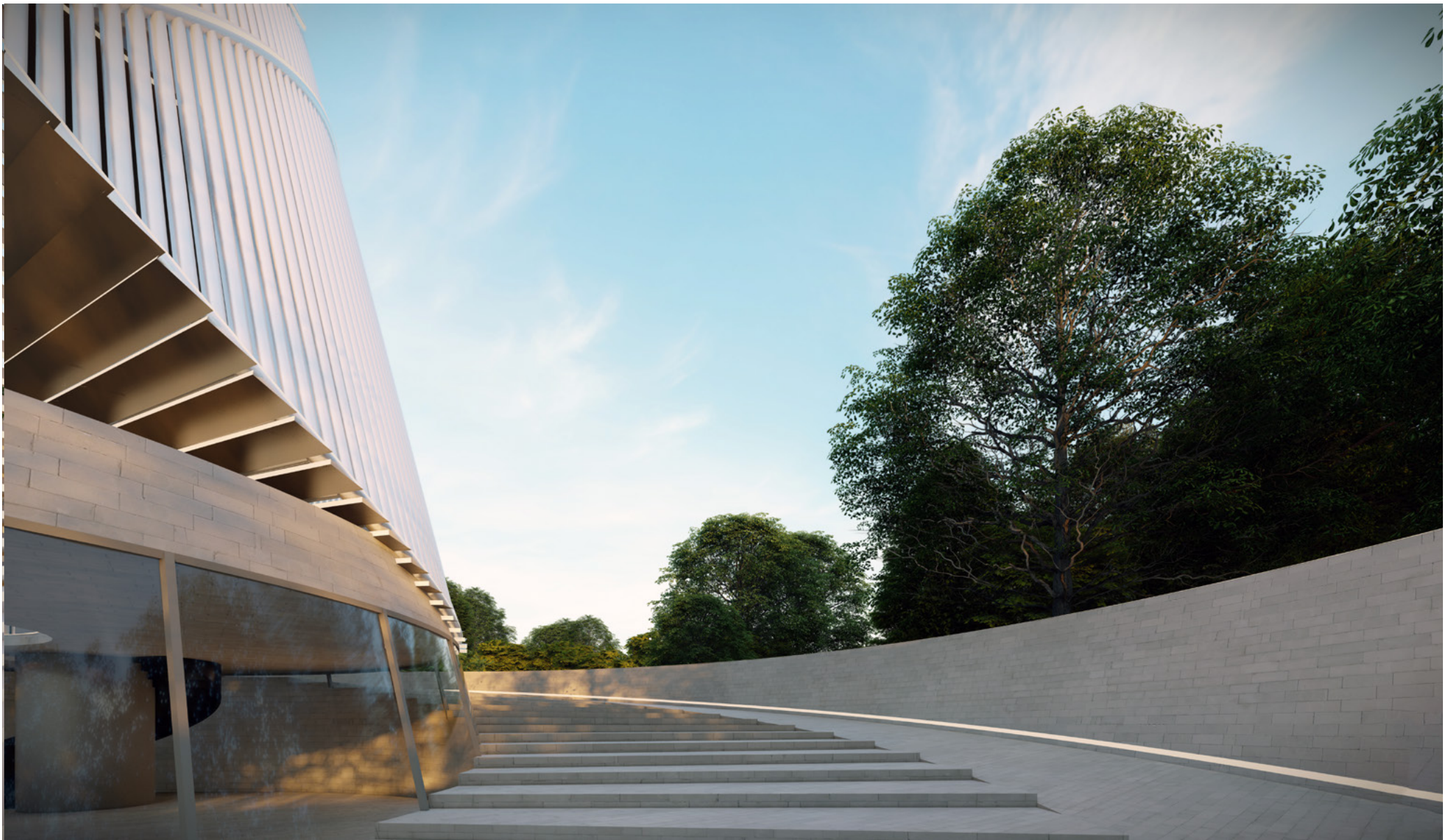
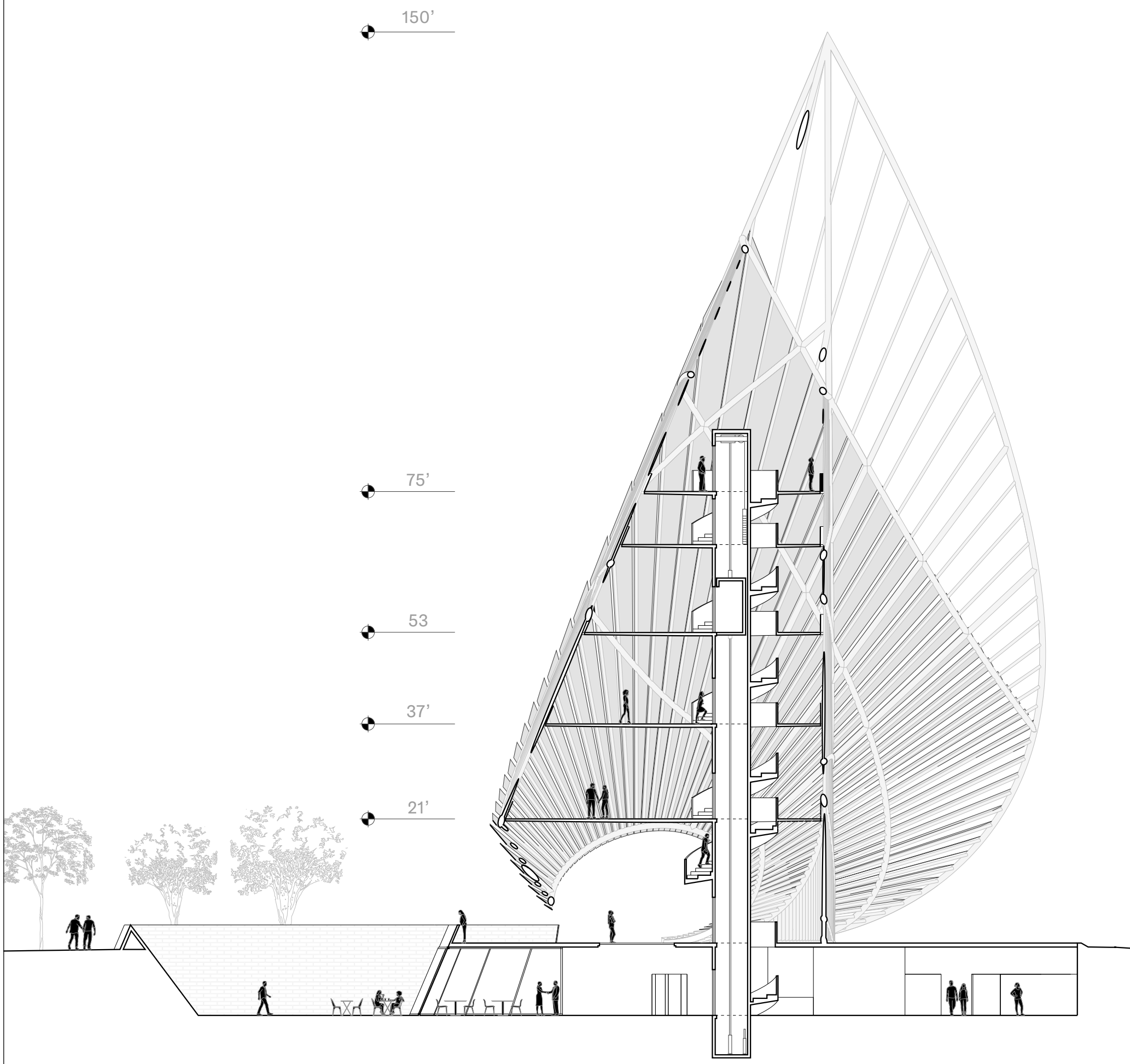




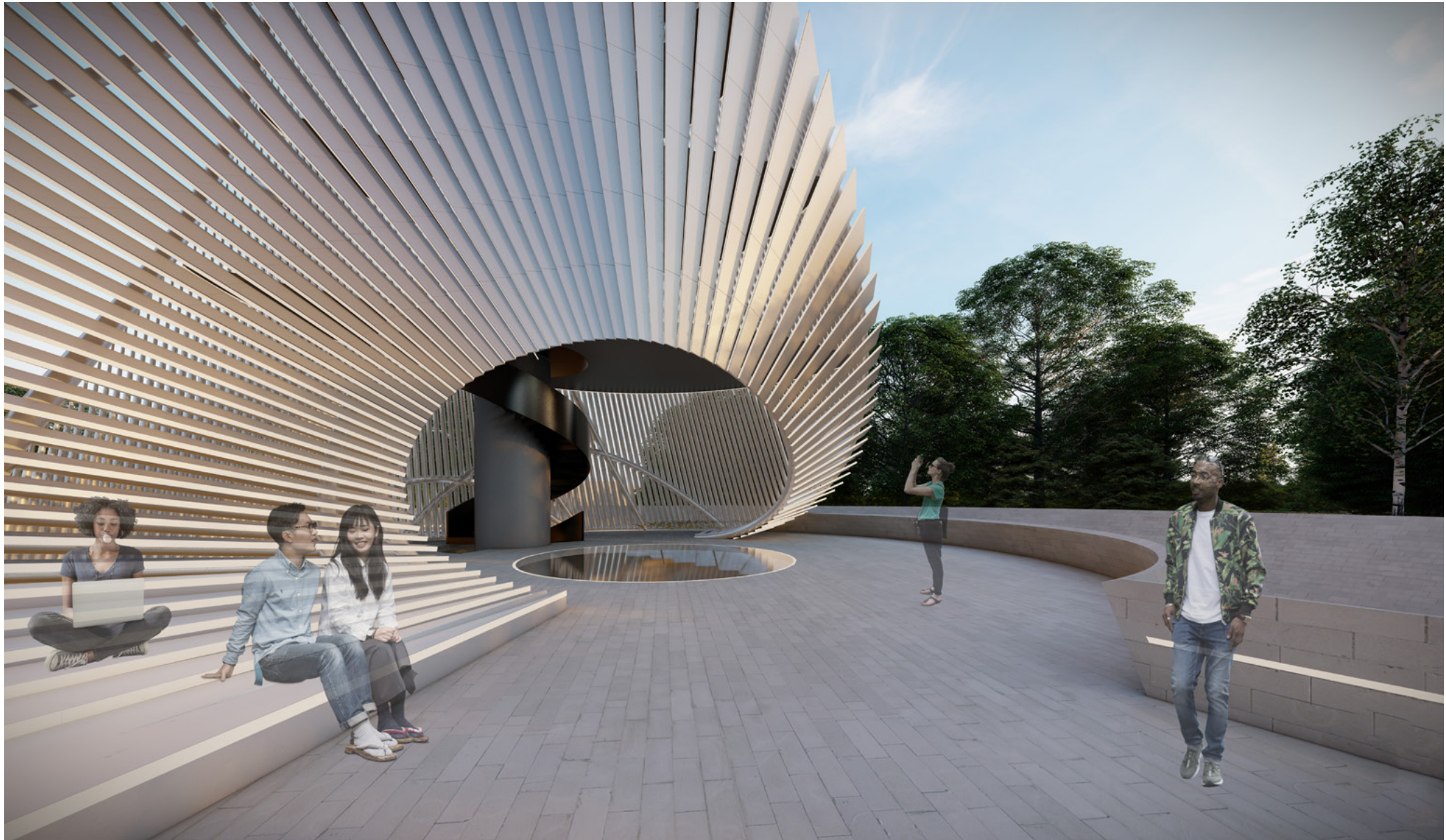


The structural lattice becomes gradually thinner as one move up the tower, providing natural cross-ventilation and views to surrounding Mission Peak, San Jose Airport and Downtown

Section 1/16" = 1'-0"

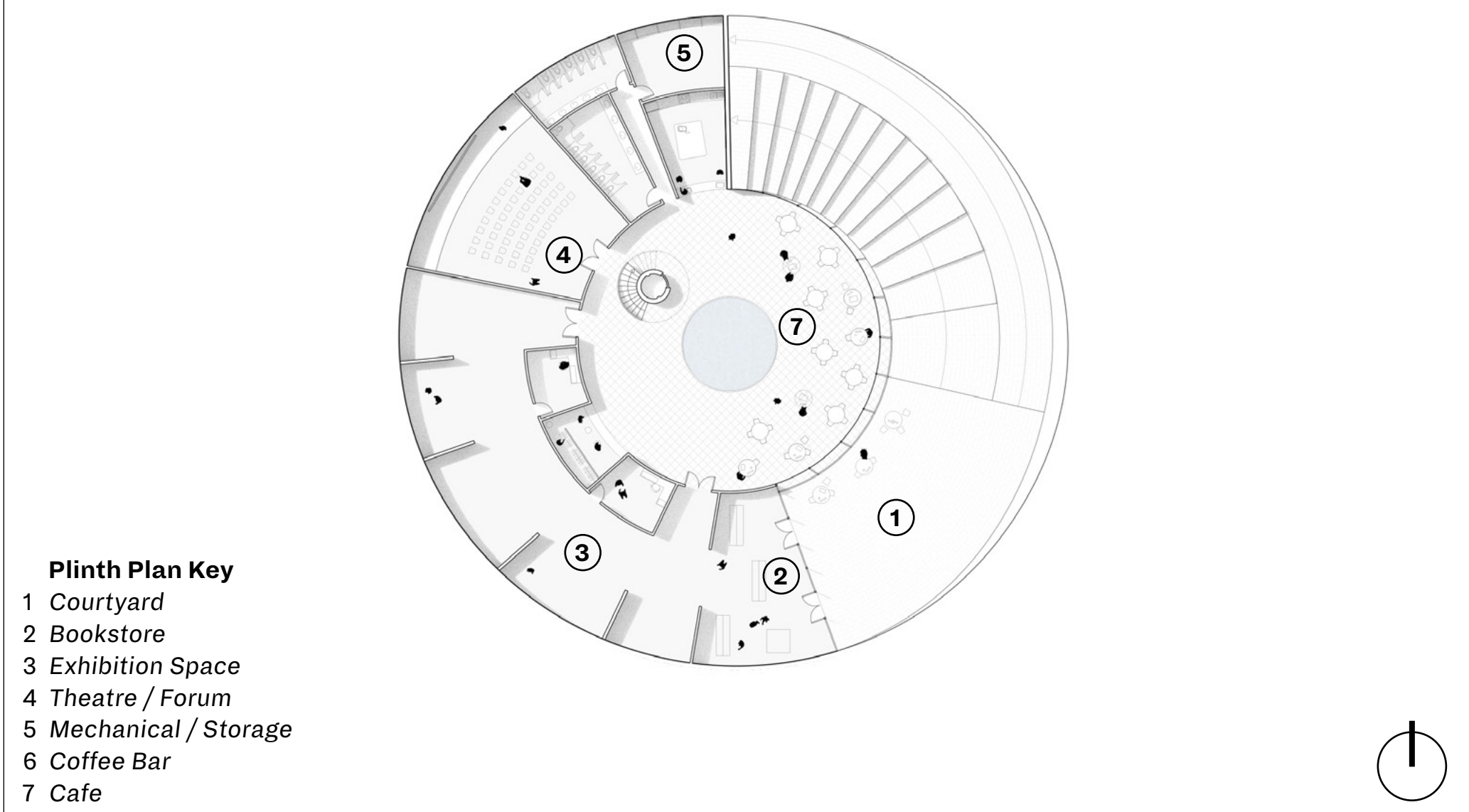


Visitors get a glimpse into the underground cafe + forum as they walk down a shaded promenade



A seamless transition from solar panels to public seating transforms the main entrance as a collective gathering space

Plinth Plan 1/32" = 1'-0"



Tower Plan 1/32" = 1'-0"

