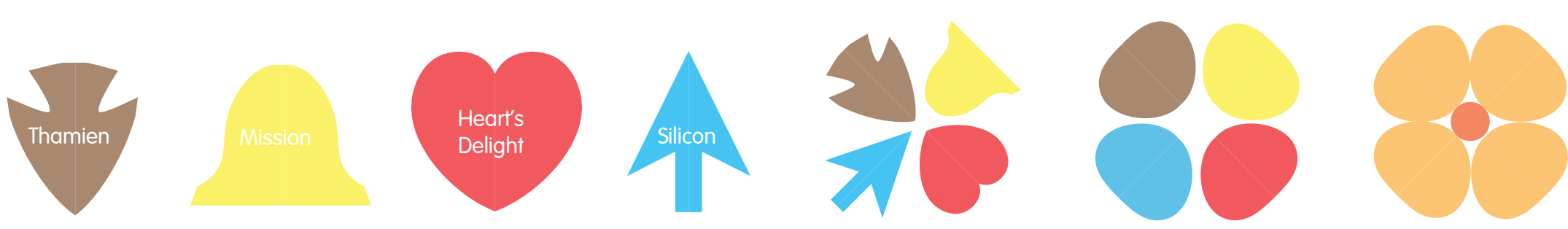


# Perennial Past



a. view from entrance

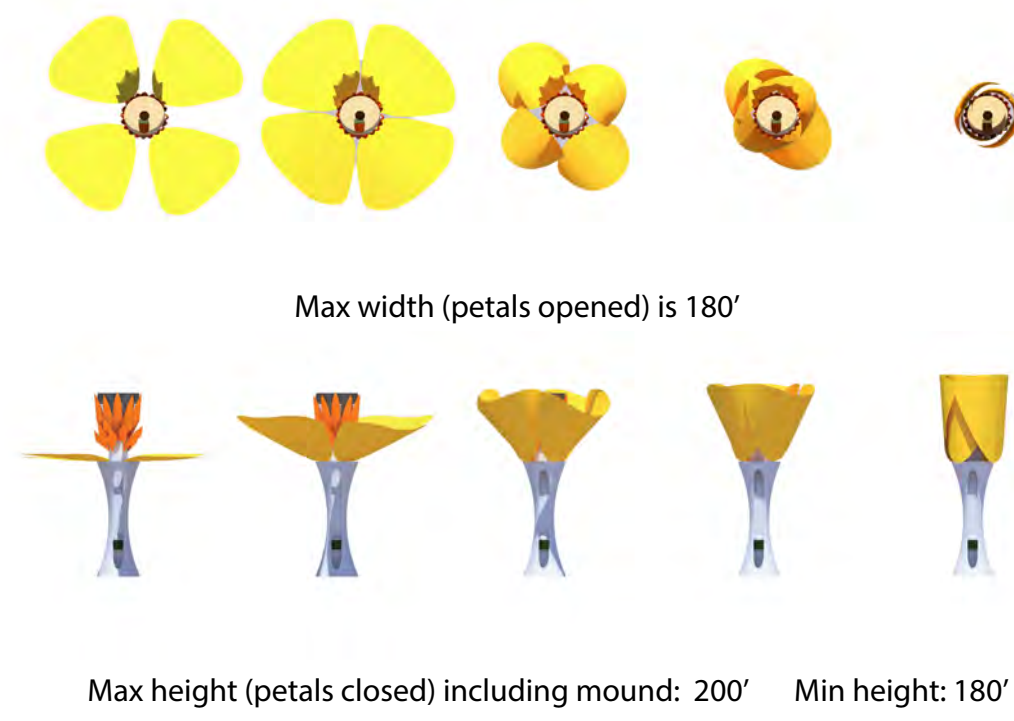


## introduction

Perennial Past, Perennial Future aims to bring attention to San Jose's past present and future by reconnecting the local community and visitors from around the world to the city's lifeline, the Guadalupe River. The poppy monument is a metaphor for this connection, and will not only serve as a symbol of the city, but also educate the public about our interdependence with the natural world in this increasingly high-tech silicon valley and world.

- Flower draws from the poppies that coat the surrounding mountains.
- A petal for each era of San Jose.
- Planting mimics stem and leaves of poppy plant, weaving and connecting it to the river.
- Solar panels covering the petals of the icon and the shade structures power the site.
- Petals open and close with sunrise and sunset, and extent of opening is tied to river flows
- Hummingbirds Sculptures symbolize the communities that have come to make their homes in the city.
- Sculptures to be decorated by community and cultural groups in the city.
- Leaves extending from the poppy's stem are populated by hummingbird sculptures.

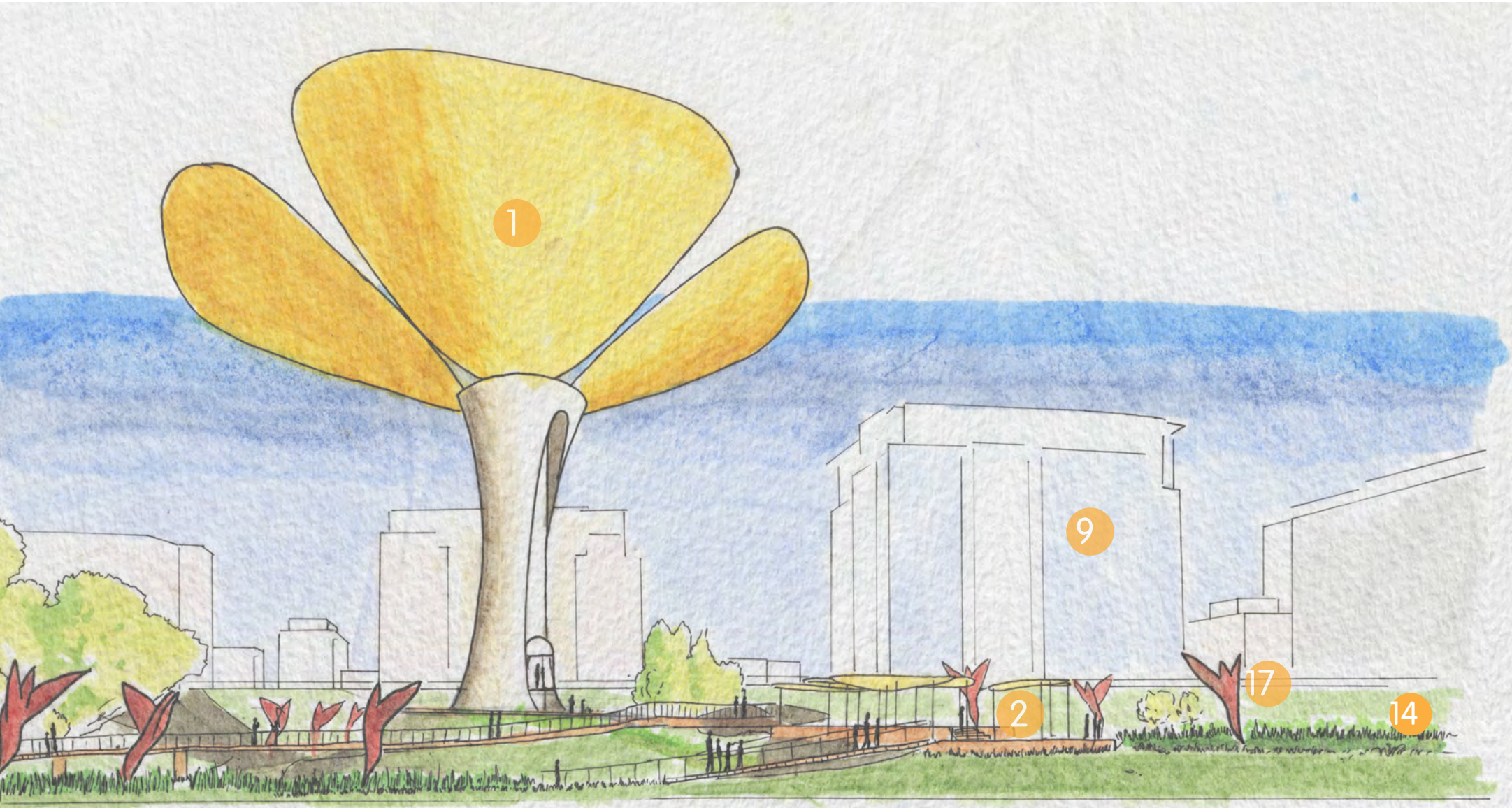
## kinetic petal diagram



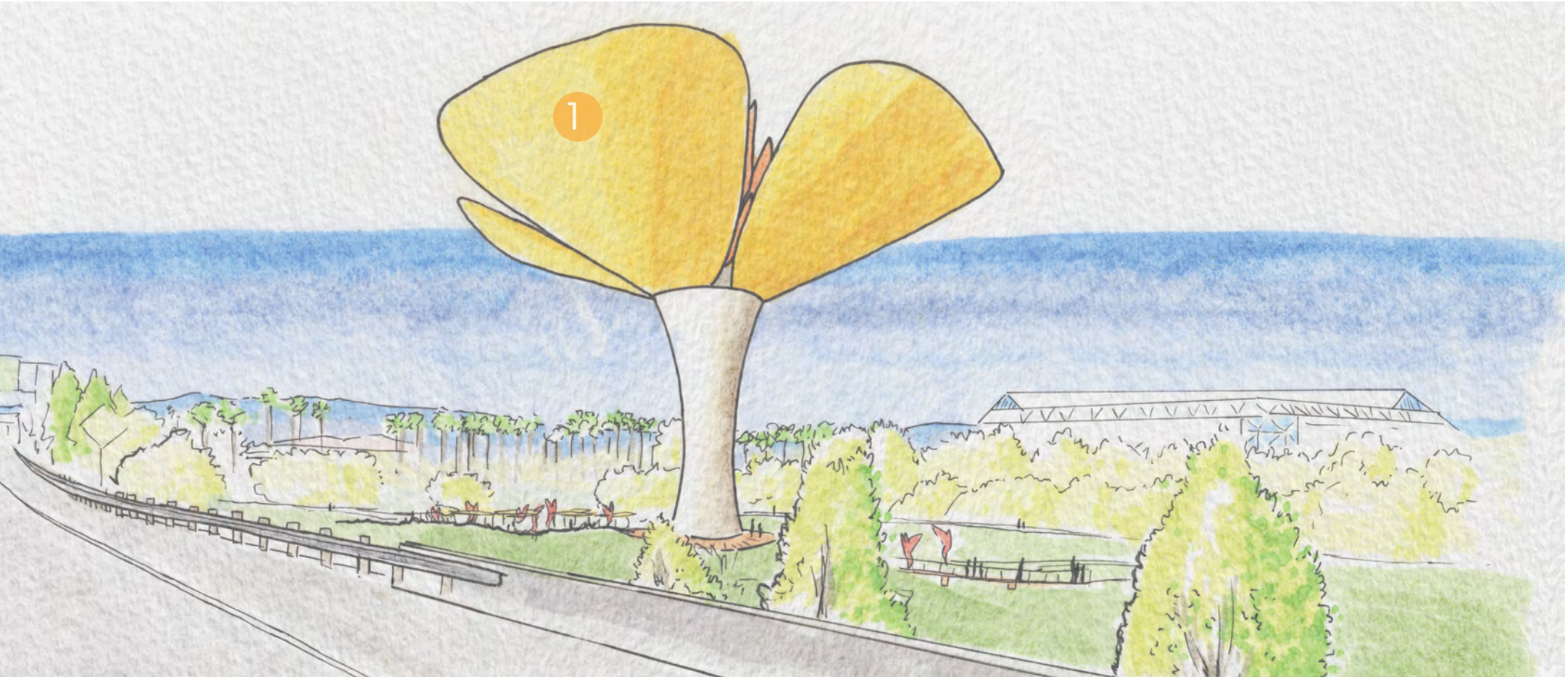
## official site map



## d. icon area walkways



c. view from route 87

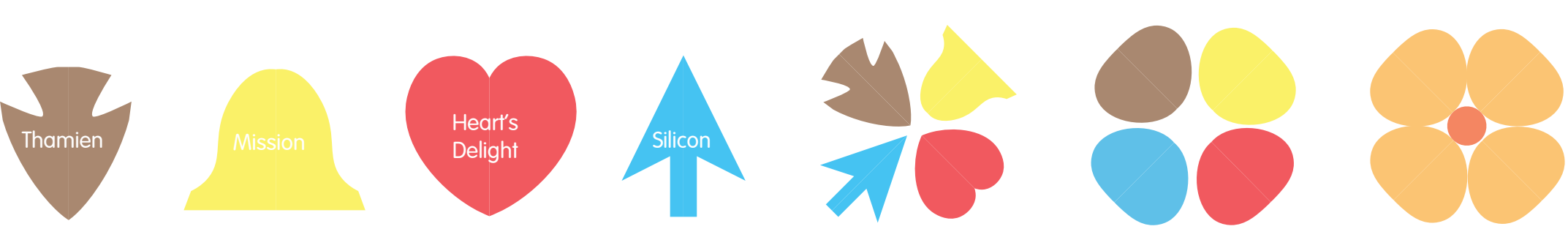


## master plan

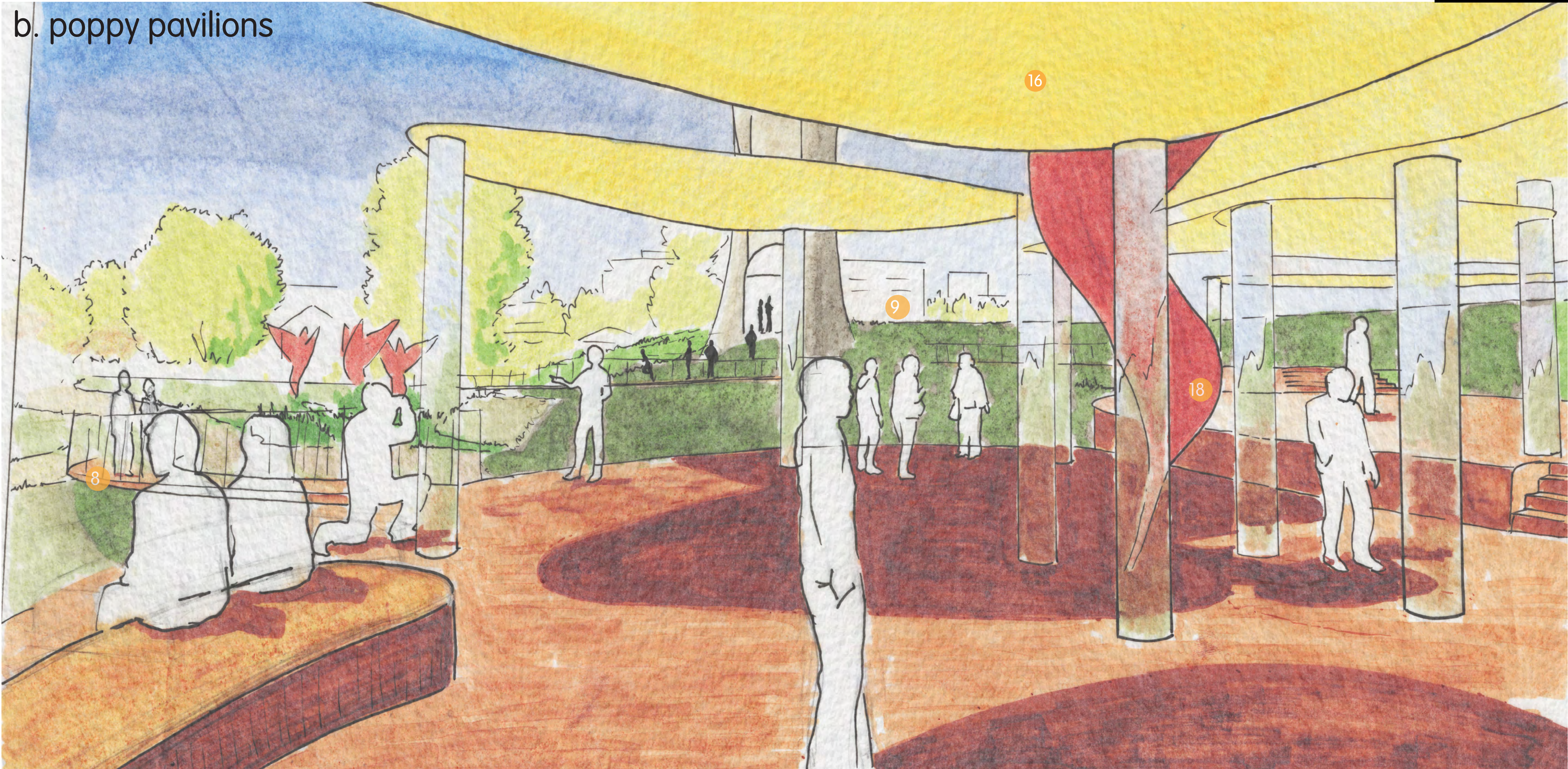




# Perennial Future

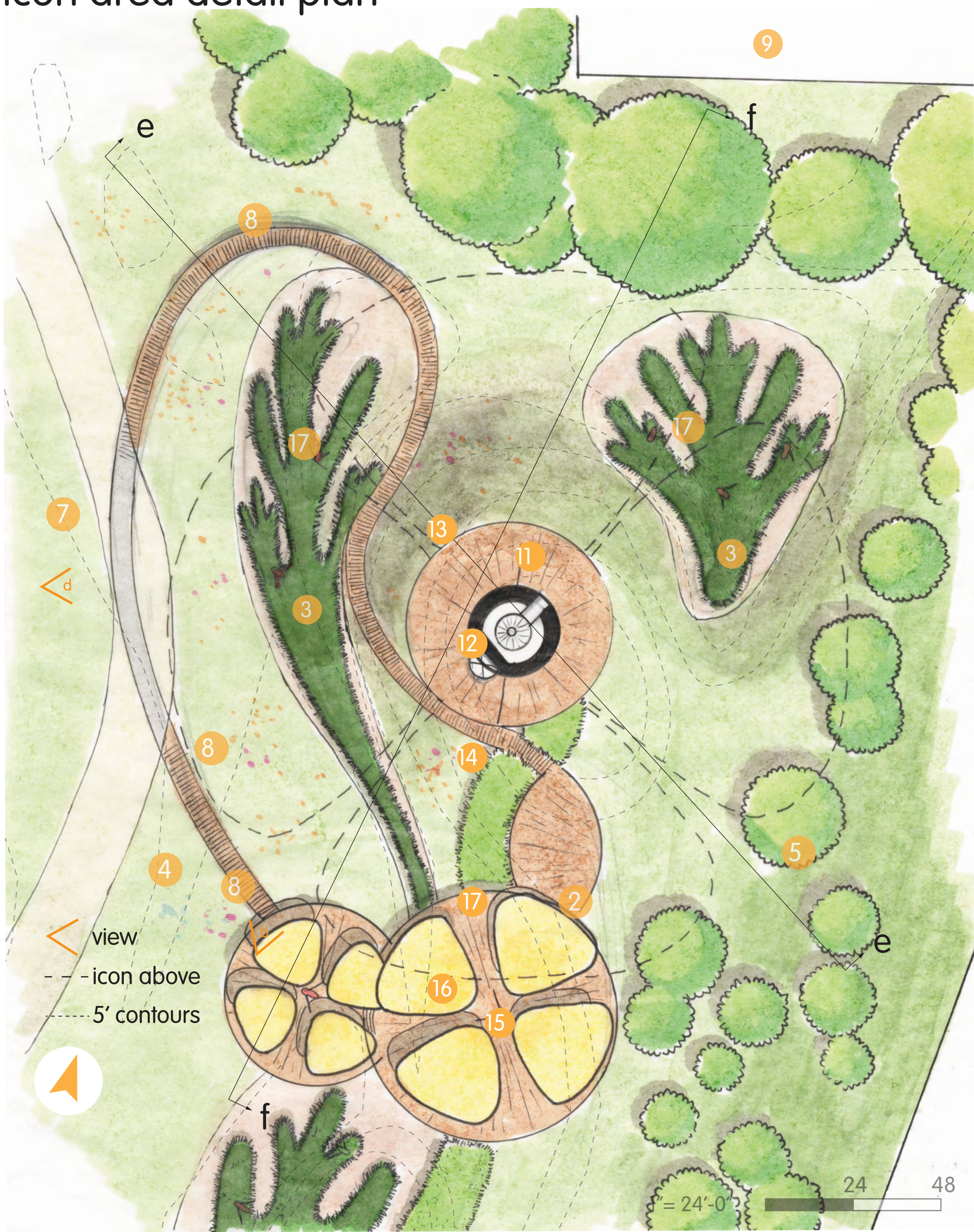


b. poppy pavilions

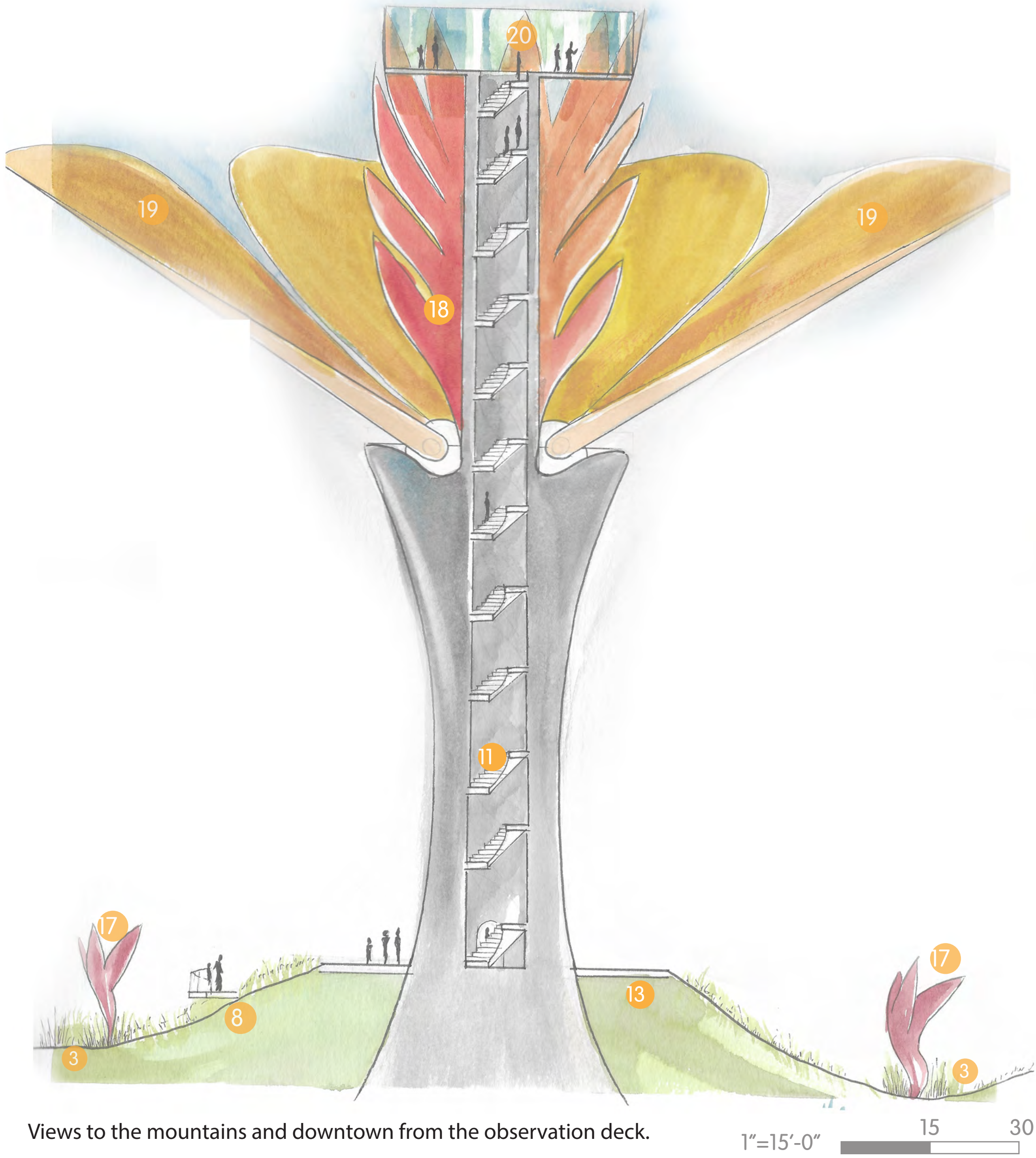


Different hummingbird sculptures will be rotated through the pavilions and added to the park monthly for various holidays and cultural events.

icon area detail plan



monument section e



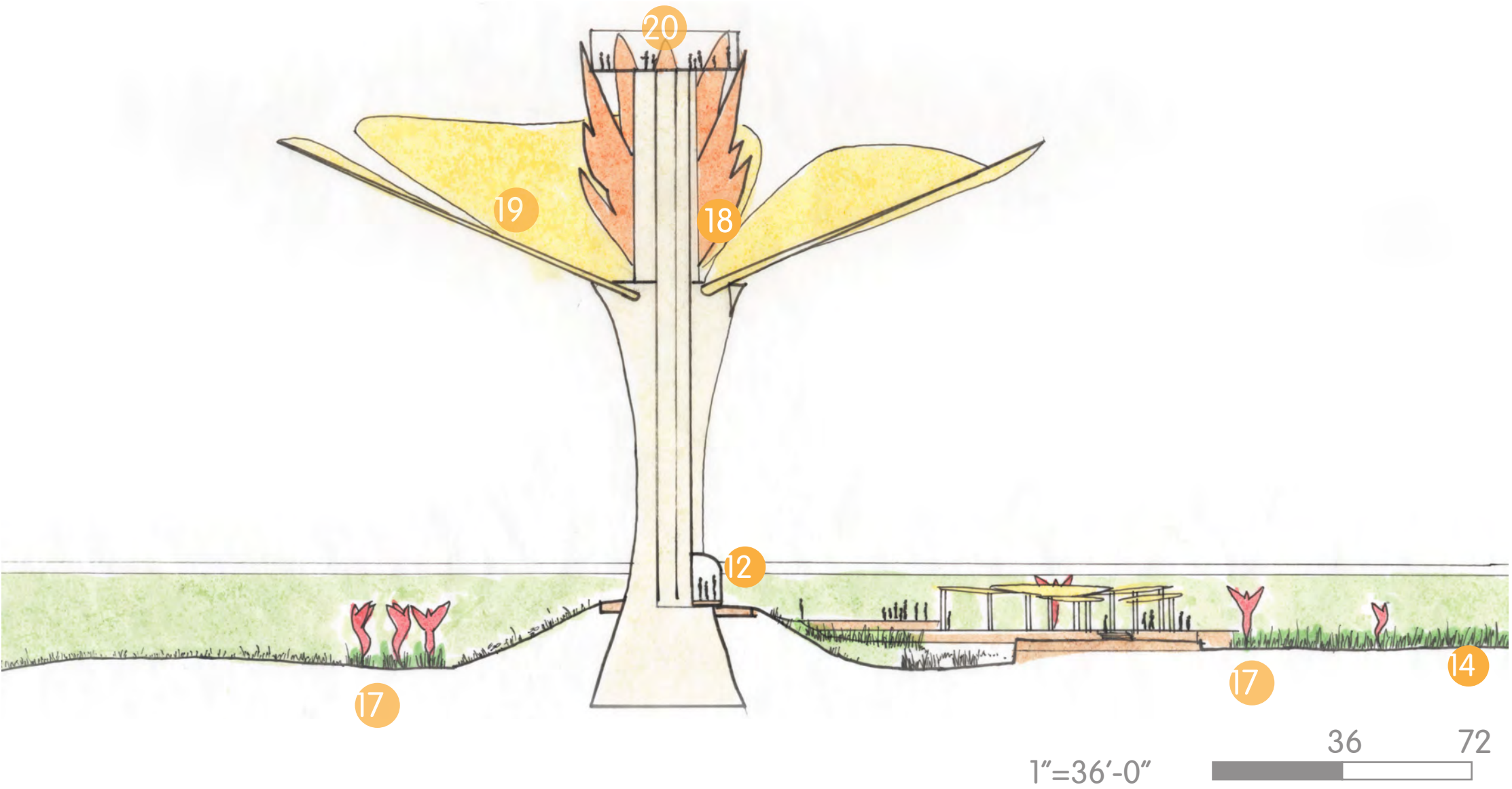
Views to the mountains and downtown from the observation deck.

1"=15'-0"

## legend

- Competition site boundary
- < View
- 1 Poppy monument and walkways
- 2 Poppy pavilions, see b. above
- 3 Leaf swale, medium height rushes
- 4 Native wildflower meadow
- 5 Existing trees
- 6 Existing river overlook
- 7 Existing lawn
- 8 Boardwalk and platform overhangs
- 9 Existing buildings
- 10 Existing walkway
- Contour lines every 5 feet
- Monument above
- 11 Emergency stairwell
- 12 Elevator
- 13 Monument base platform
- 14 "Stem" 2-3 ft calamagrostis
- 15 Elevated platforms
- 16 Solar panel shade structures
- 17 Hummingbird sculpture
- 18 Sculptural stamens
- 19 Kinetic solar panel petals
- 20 Observation deck

monument section f



1"=36'-0"