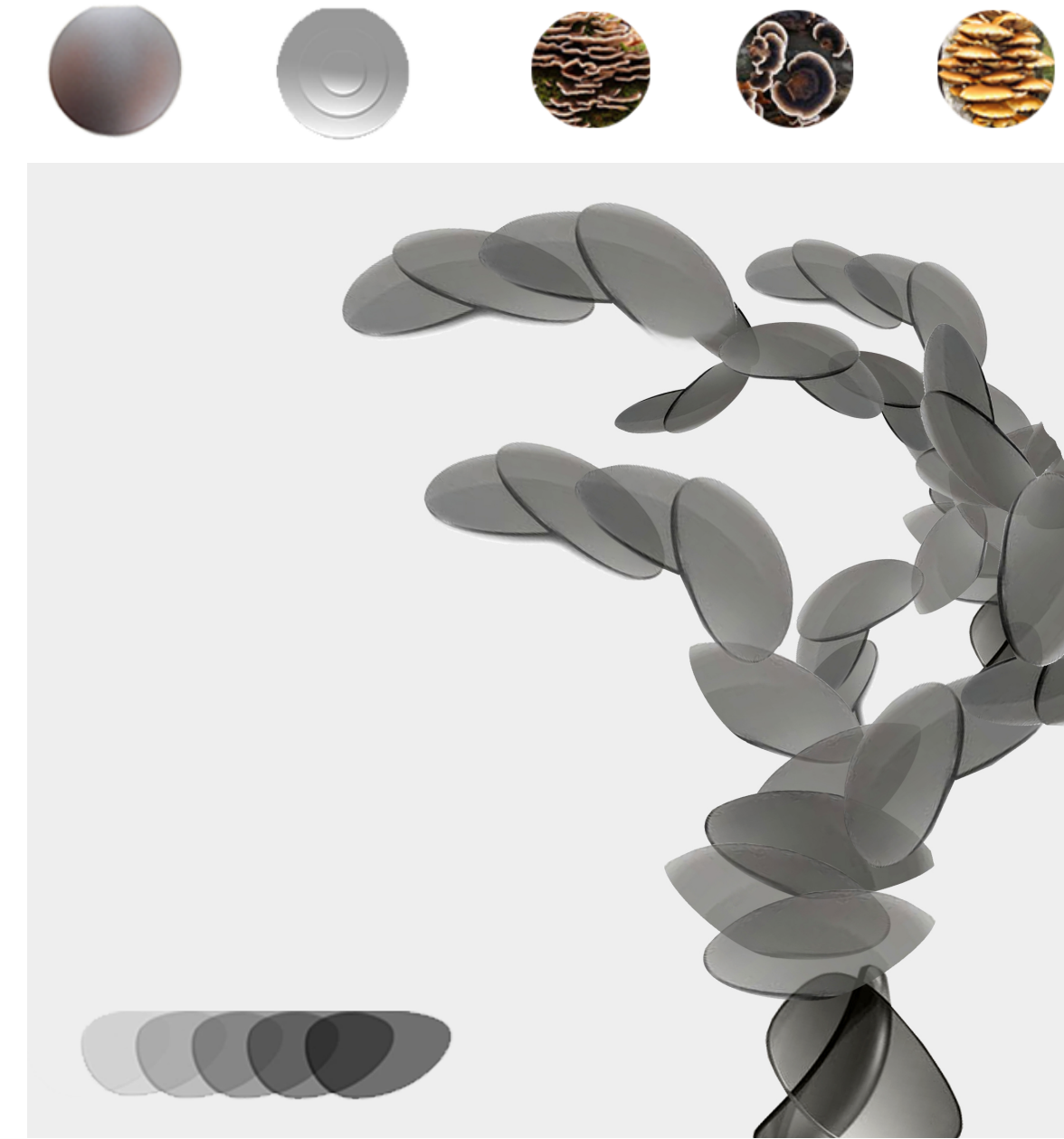
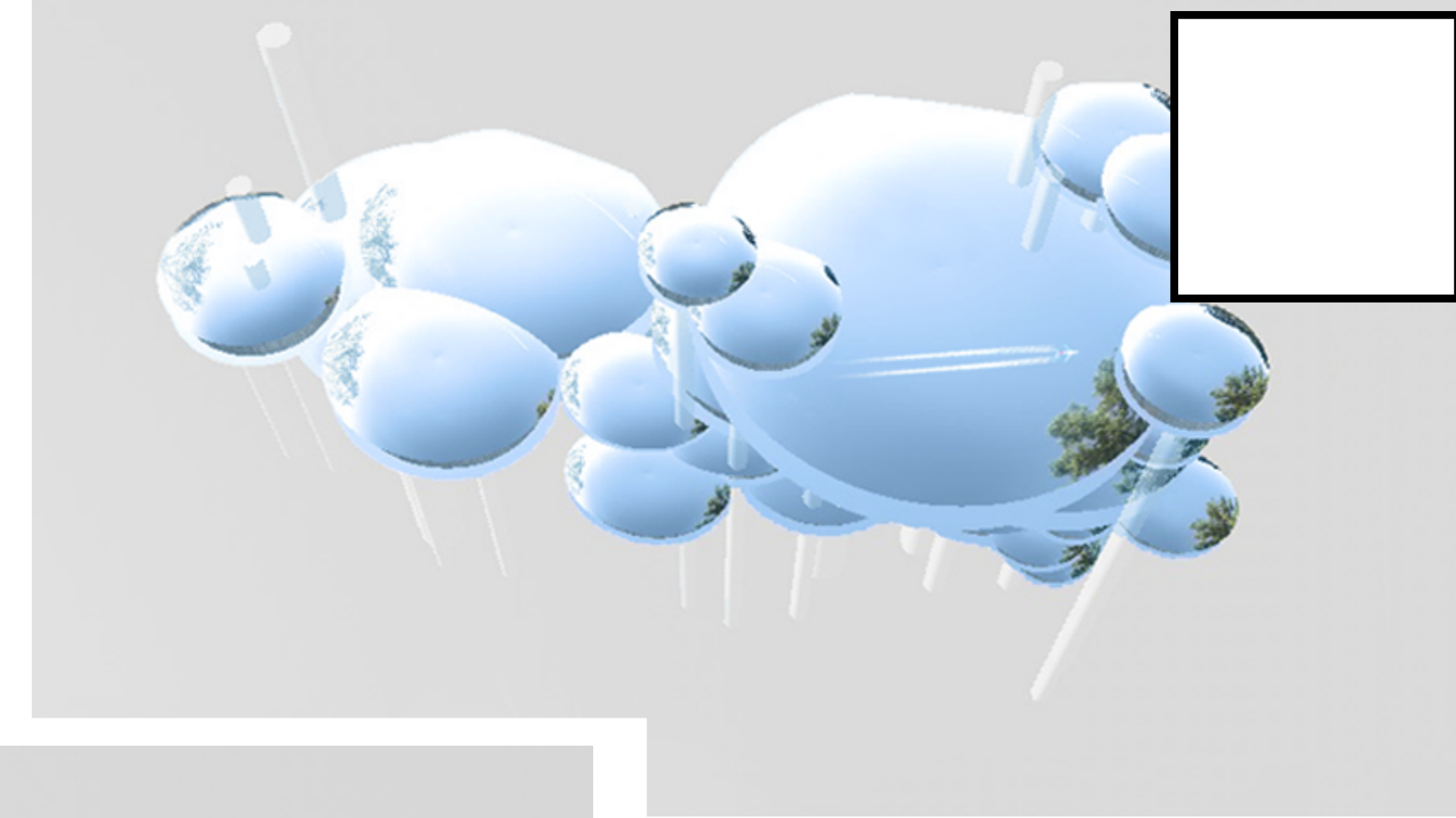
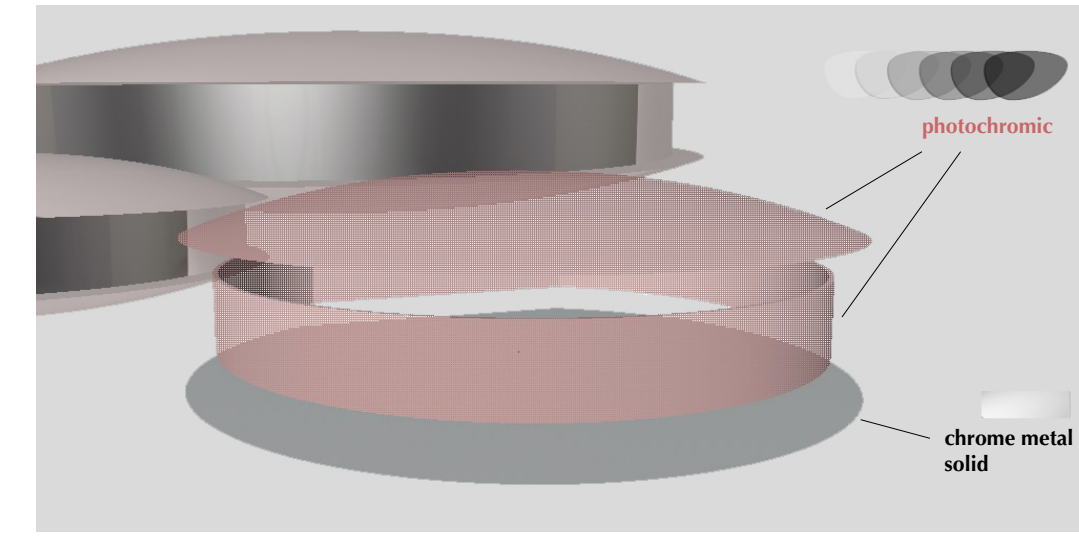
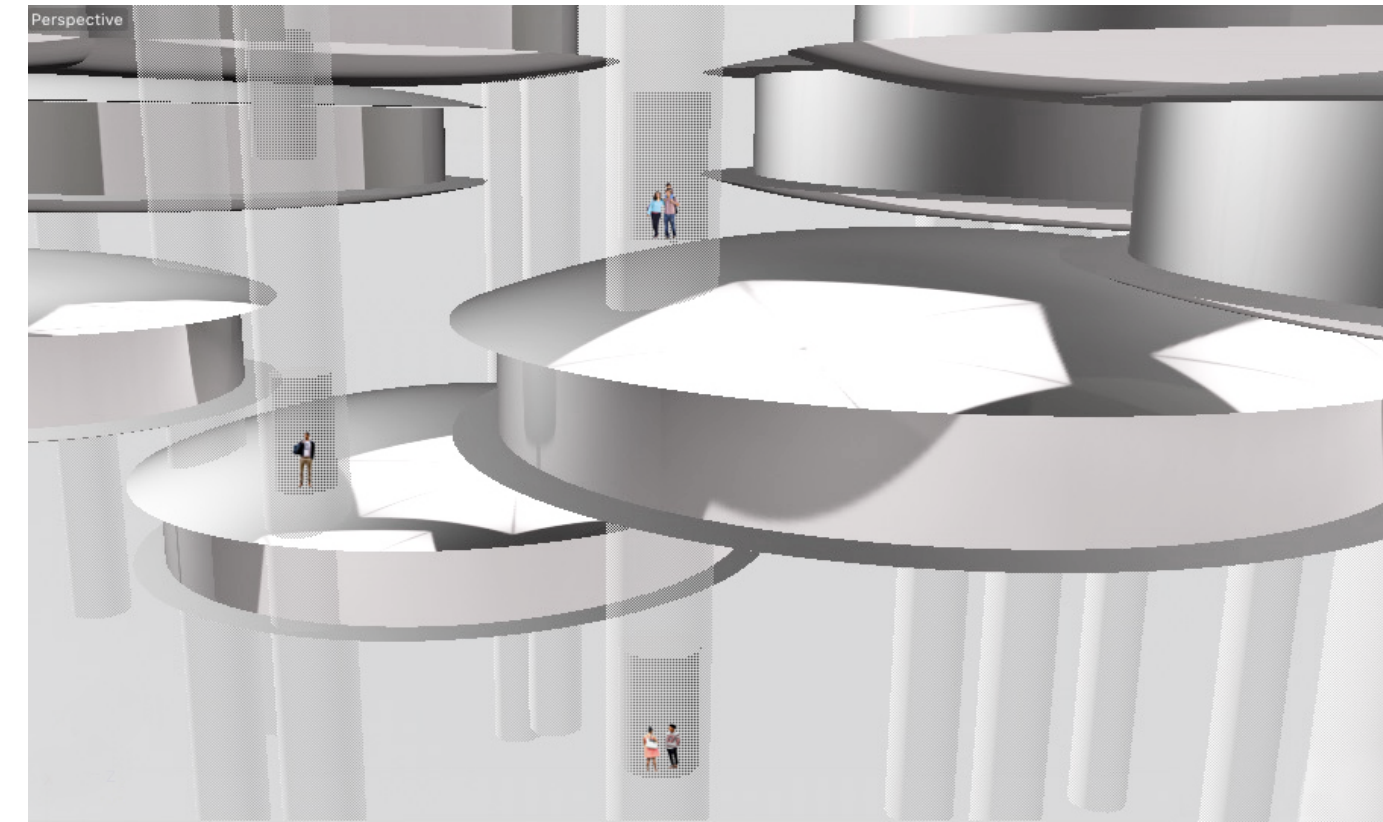


# PERENNIAL PARK MOODBOARD

## CONCEPTUAL AND VISUAL FRAMEWORK FOR THE SAN JOSE URBAN CONFLUENCE PROJECT



Height: 200 feet Width: ca 230 feet  
Panoramic disks vary in size and curvature  
Largest about 100 feet wide



### PERENNIAL

HIPPIE

MILLENNIAL



My design has 2 recurring themes: **PERENNIAL** and **PHOTOCHROMIC**

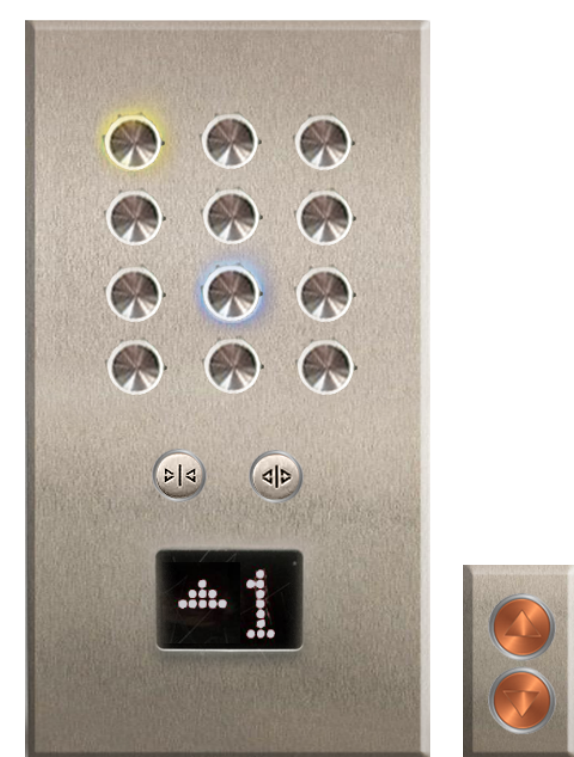
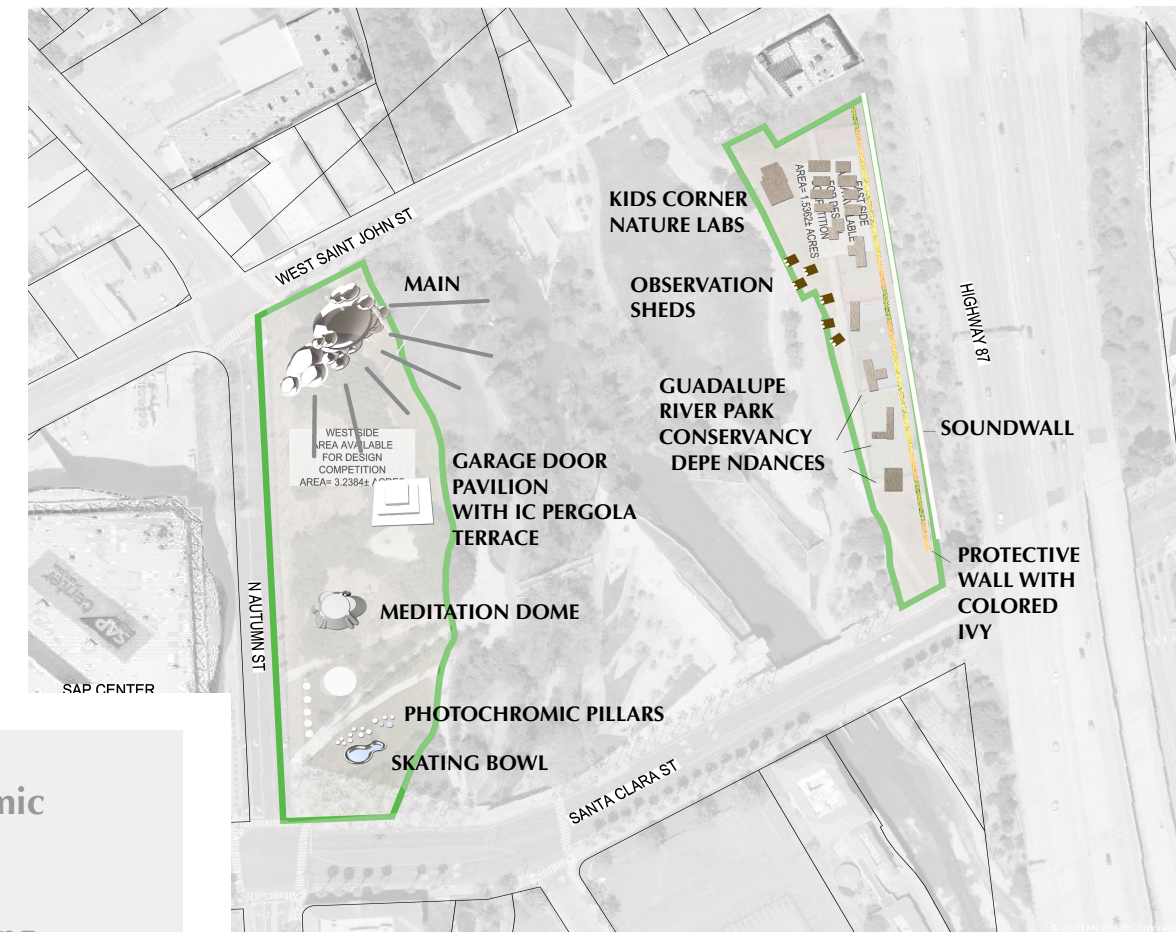
'Perennial' stands for go-getter, survivor, leader, guide. The personality and mentality needed to succeed in Silicon Valley

**The perennial / algorithmic / rhizomatic patterns** used in my design attest to the history and spirit of Silicon Valley: perseverance / resilience / resurgence / non-linear thinking / counter-culture / rooting on the fly / decentralized / by-passing / inventive / unpredictable / serendipitous meetings / mentoring / spreading knowledge across / perpetuity / seedlings / spinning out

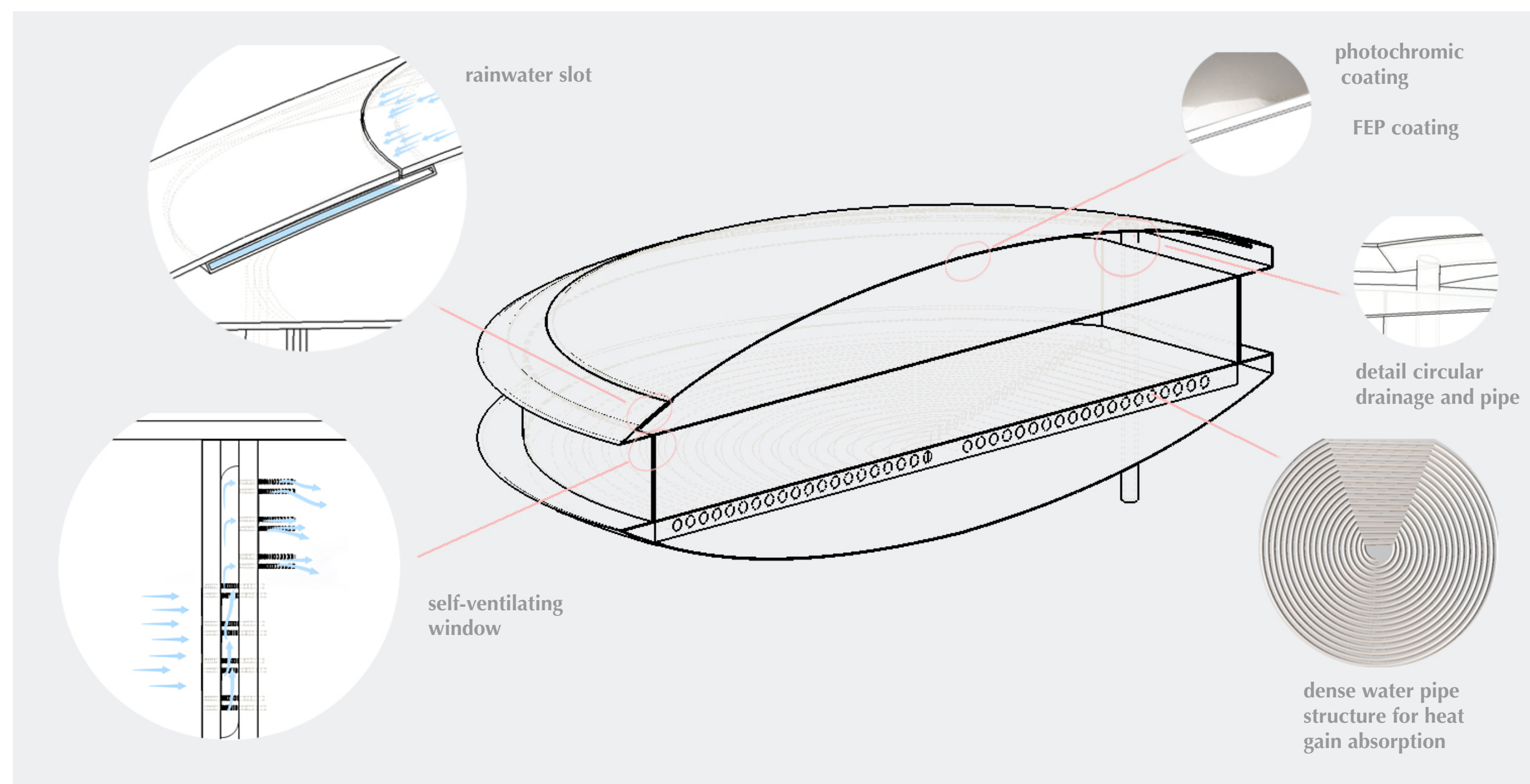
You don't have to emerge from nothing. It's always a culture / discourse / humus that leads to extraordinary results that elevate all

My use of **photochromic** materials signifies the most profound change in our sense of spacetime brought about by our use of computers: the collapse of physical and virtual experiences  
Expressed in this design through transitions from opaque to transparent and vice versa  
It also points to the use of photo lithographic masking in the making process of computer chips, and references 'work - leisure fluidity' stemming from 'Silicon culture' (prescription to sunglasses)

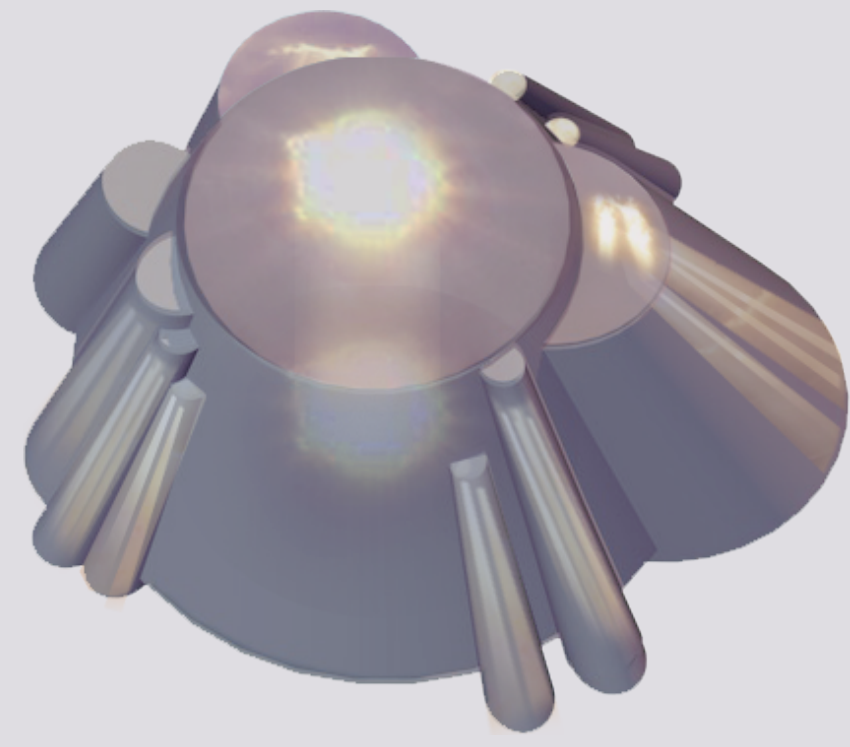
Functions: restaurants / cafés, fab labs, inclusive coding clubs, kids nature labs, meditation, skating, calisthenics and gift shop  
Fashion, interior, product designers and artists are periodically invited to work on site and extend the project beyond the confinements of the park  
Keywords are **learning, making, innovating** and our relation to **nature**



Climate control of the main building is achieved through large bodies of water in the floors, in combination with sun shielding and self-ventilating windows.  
'Cooling' with water is more effective and less energy consuming than with traditional air conditioning, since water absorbs heat gains and prevents the building from getting hot in the first place.  
The round window components should be prefabricated in one piece and intermittently have perforation holes at the top for ventilation, guarantying the circulation of fresh air.  
Rainwater is collected in a circular structure along the roof curvature and contributes to about a 25% reduction of the total regular water use.  
Maintenance of the drainage system can be done from inside.







Width: ca 65 feet

**MEDITATION DOME**

Quicksketch of photochromic dome mimicing the sun breaking through the clouds: a moment of clarity / brilliance  
The structure cancels noise of traffic and aviation.  
The beginning and end opacity of the various photochromic emulsions can be set. High definition glass quality doesn't exhaust and is generally sensitive to artificial light, in addition to UV. In the evening the covering can be lit from inside, following the directions of the wall. Most light will be blocked by the coating.  
Fun fact: Transition lenses were developed by American inventors in the 1960s, and some of the existing photochromic technologies contain silicon.

IF YOU LOVE WHAT YOU DO  
AND ARE WILLING TO DO WHAT IT TAKES,  
IT'S WITHIN YOUR REACH

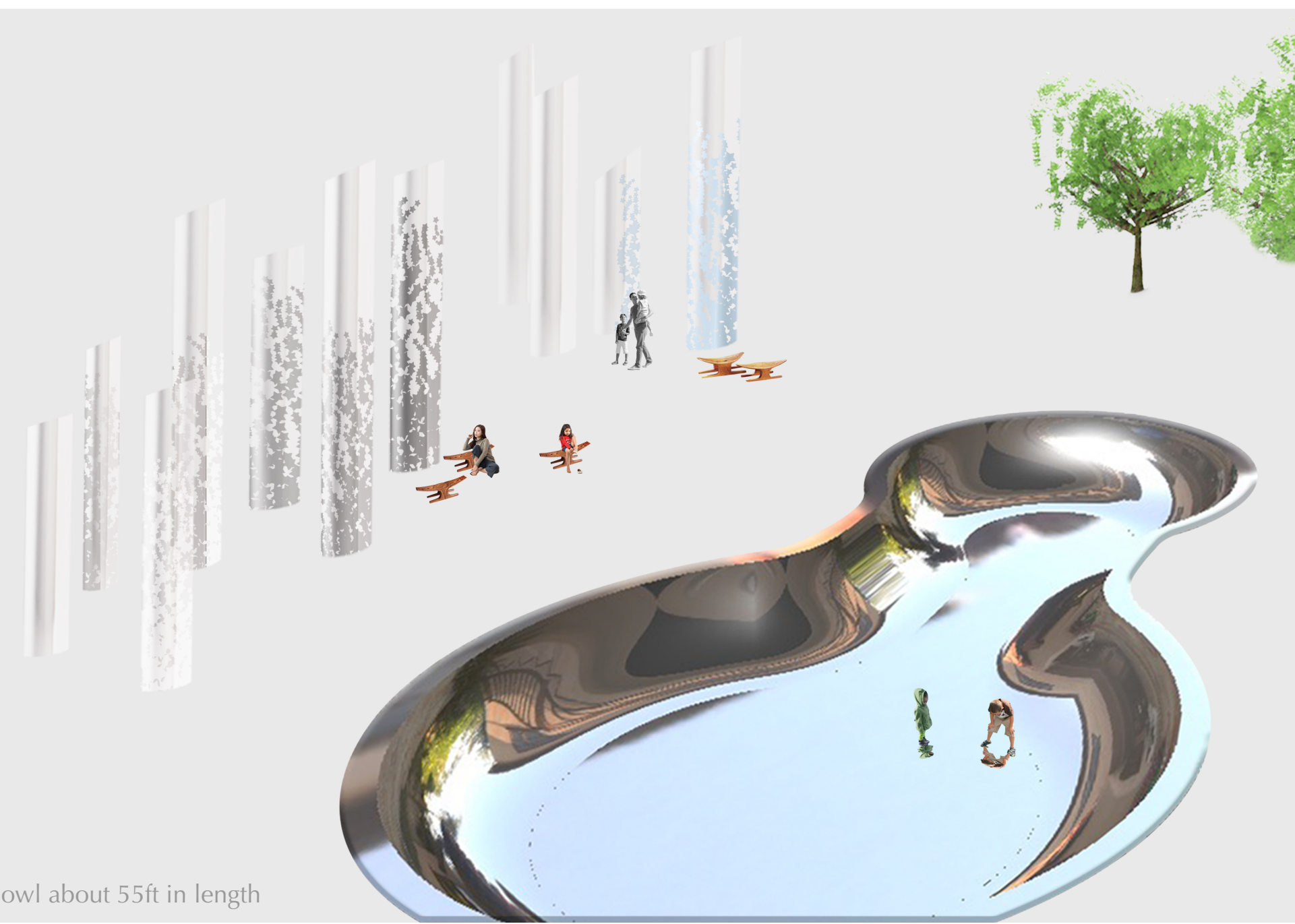
THE CLIMATE IS CHANGING  
WHY AREN'T WE?

SOME PEOPLE FEEL THE RAIN. OTHERS JUST GET WET

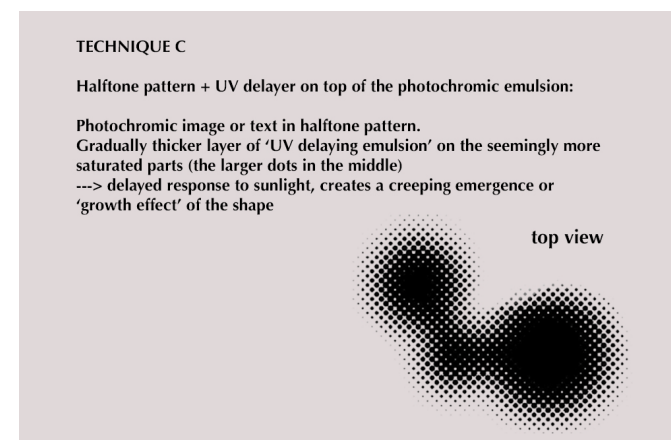
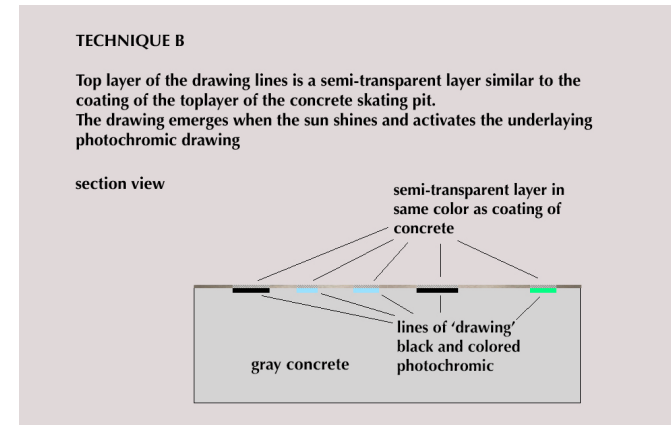
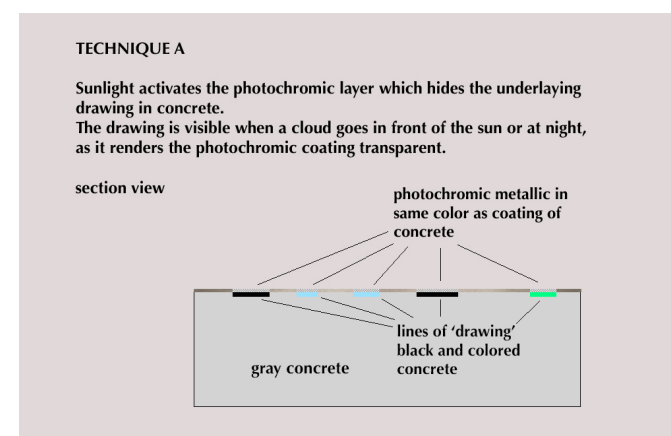
BLACK LIVES MATTER

**SKATING BOWL AT THE MAIN ENTRANCE OF THE PARK**

This area interacts with the existing *Five Skaters* artwork and SAP skating, by adding a third kind: skateboarding  
Introducing the transparent photochromic pillars similar to the elevator shafts of the main building, to draw the visitor in, as a welcoming gesture  
On the bottom of the skating bowl you find images and texts alluding to counterculture, and motivational quotes by Silicon Valley heavy weights  
Using techniques that animate the expressions by concurrently revealing and obscuring parts, dependent on sunlight. See descriptions below  
Design elements reflect the confluence of cultures at San Jose and their sometimes unexpected kinships, such as woodcut stools resembling Bay Area boards (somewhat larger and executed in metal for public space application)  
In the evening the pillars are lit from the bottom, from inside the column.



Bowl about 55ft in length



example woodcut stool and photochromic skateboard



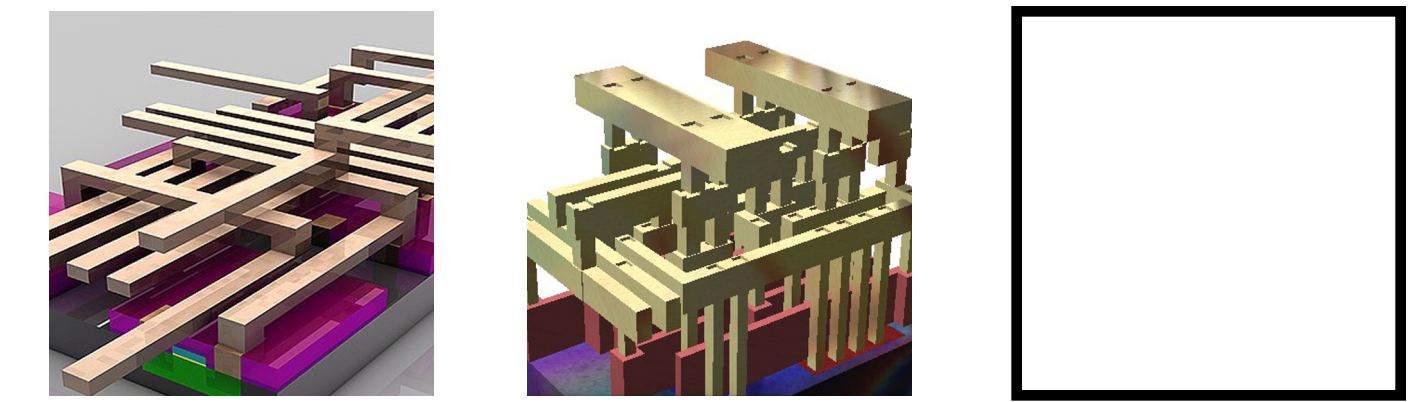
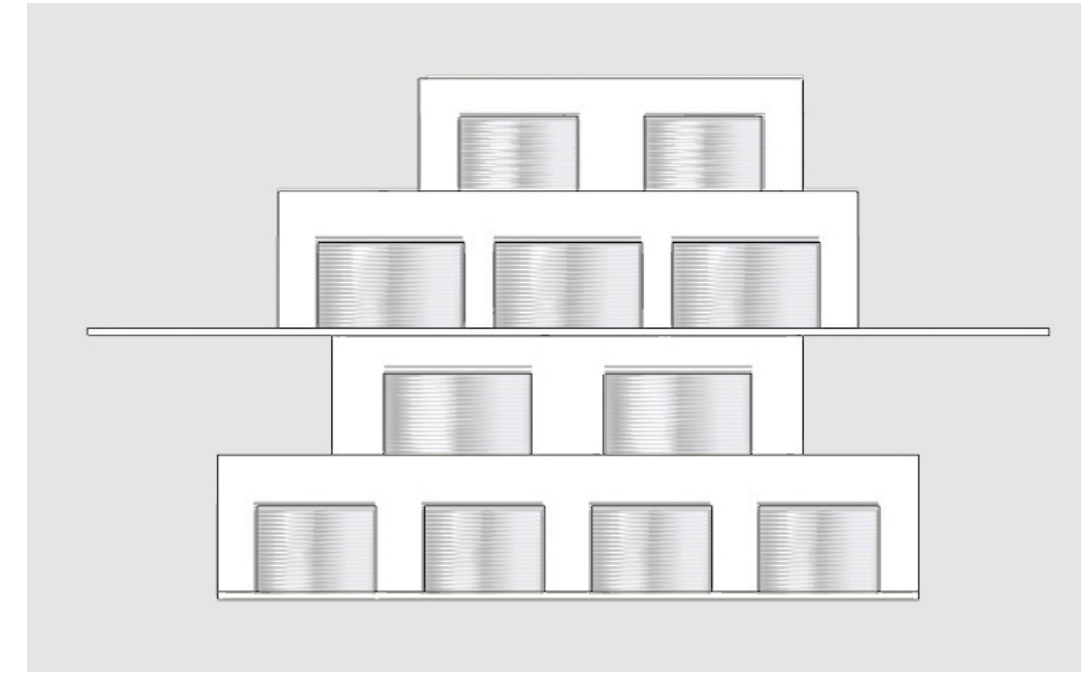
**PERENNIAL PARK MOODBOARD**  
CONCEPTUAL AND VISUAL FRAMEWORK FOR THE SAN JOSE URBAN CONFLUENCE PROJECT

ALL POWER TO THE PEOPLE

DON'T LET THE NOISE OF OTHERS  
DROWN OUT YOUR INNER VOICE

COURAGE IS NOT THE ABSENCE OF FEAR  
BUT THE TRIUMPH OVER IT

THERE IS NO  
PLANET B



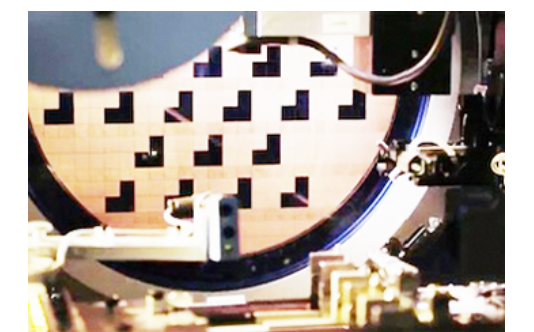
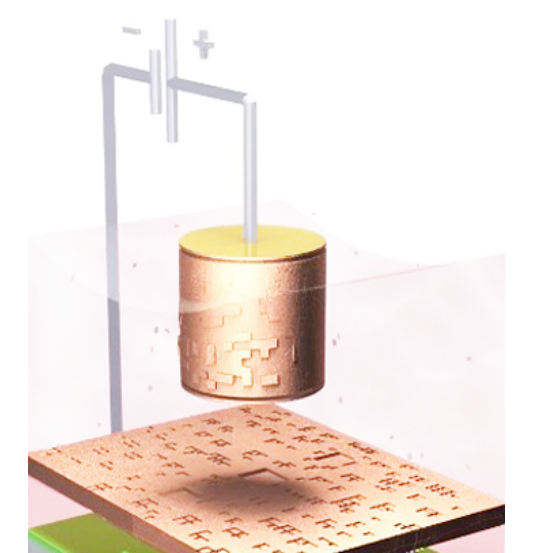
**GARAGE DOOR PAVILION**

The garage is the Silicon archetype architecture for moments of epiphany.  
For special occasions, the shutter rolls can be switched out to show 1 integral airbrushed image per side and convey community input.  
With a space technology theme, or a reference to counterculture and protest, which is the rock bed of Silicon Valley and continues to drive advancement.  
The walls are semi-transparent white to silverwhite photochromic. In the evening the building is illuminated with floor LED panels

**KIDS NATURE LABS - EAST SIDE AREA**



soundwall bank protective wall with colored photochromic ivy



Lithographic process for IC on microchip (photo masking)



The walls of the kids corner buildings are semi-transparent metallic, so that the spaces always maintain openness.  
With various line and stencil patterns of local animals, in photochromic coatings  
The animals transit from completely clear to completely opaque

There's a series of sheds with upcycled empire chairs, accessible by appointment for wildlife observation