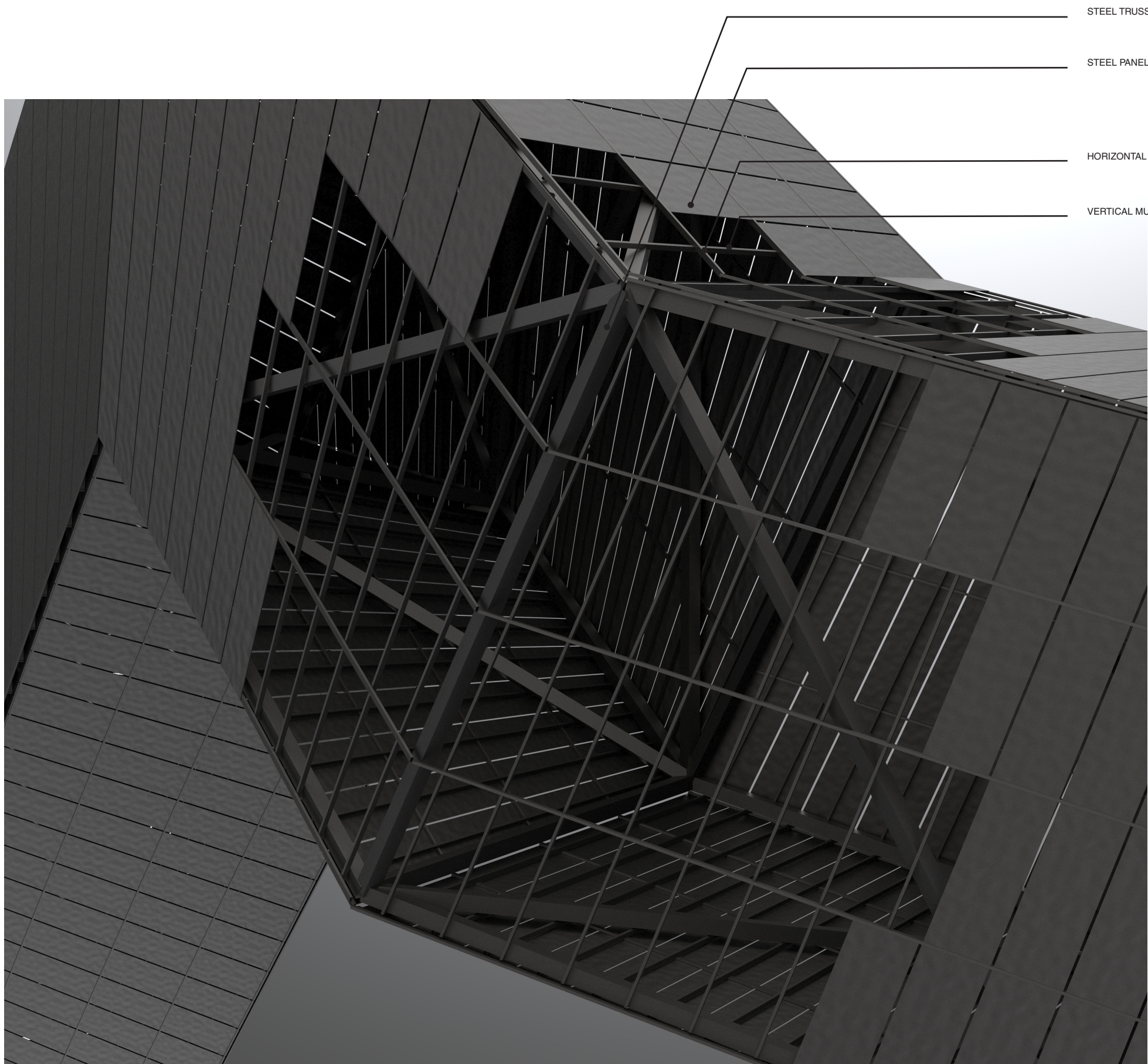
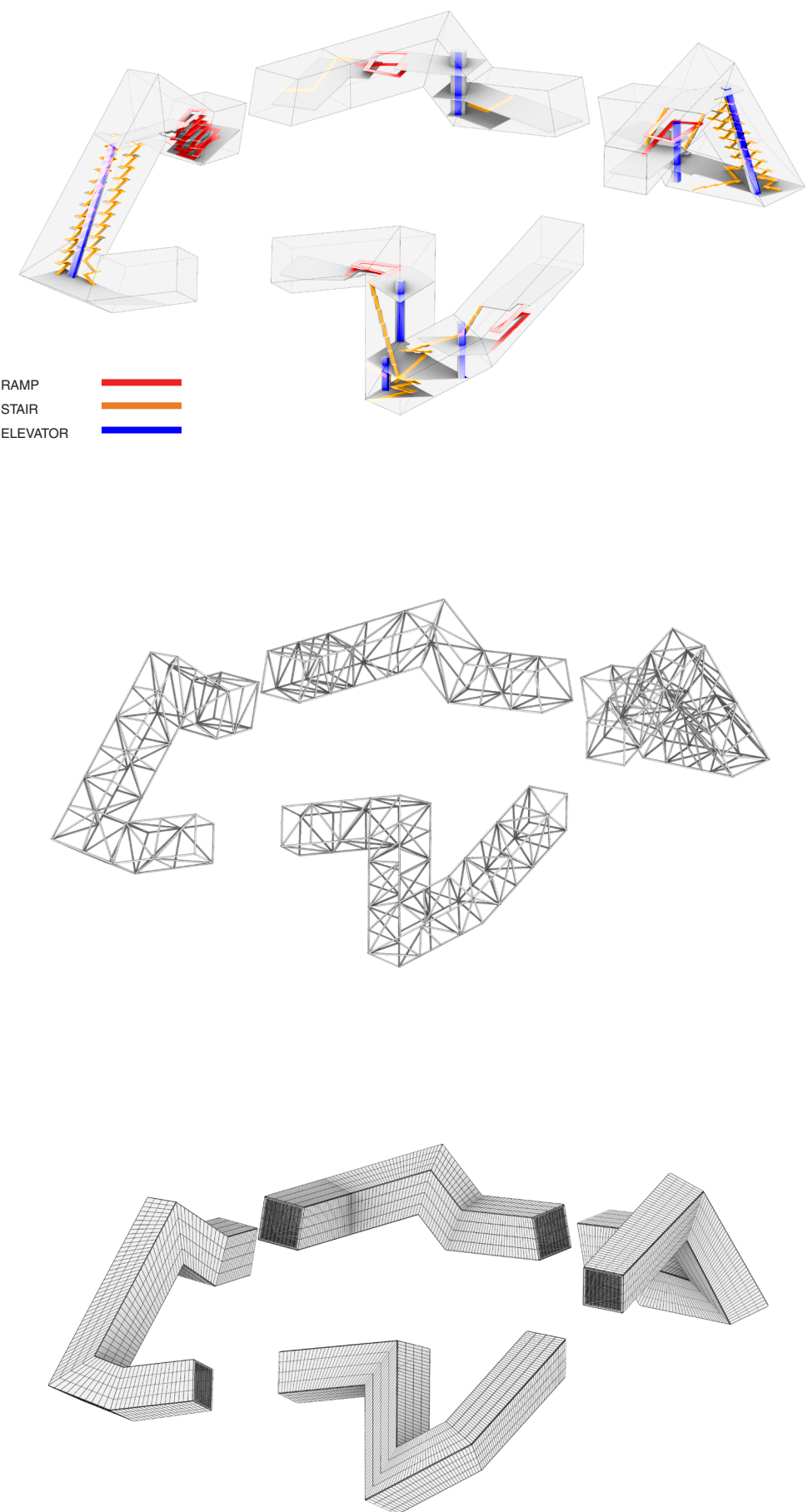
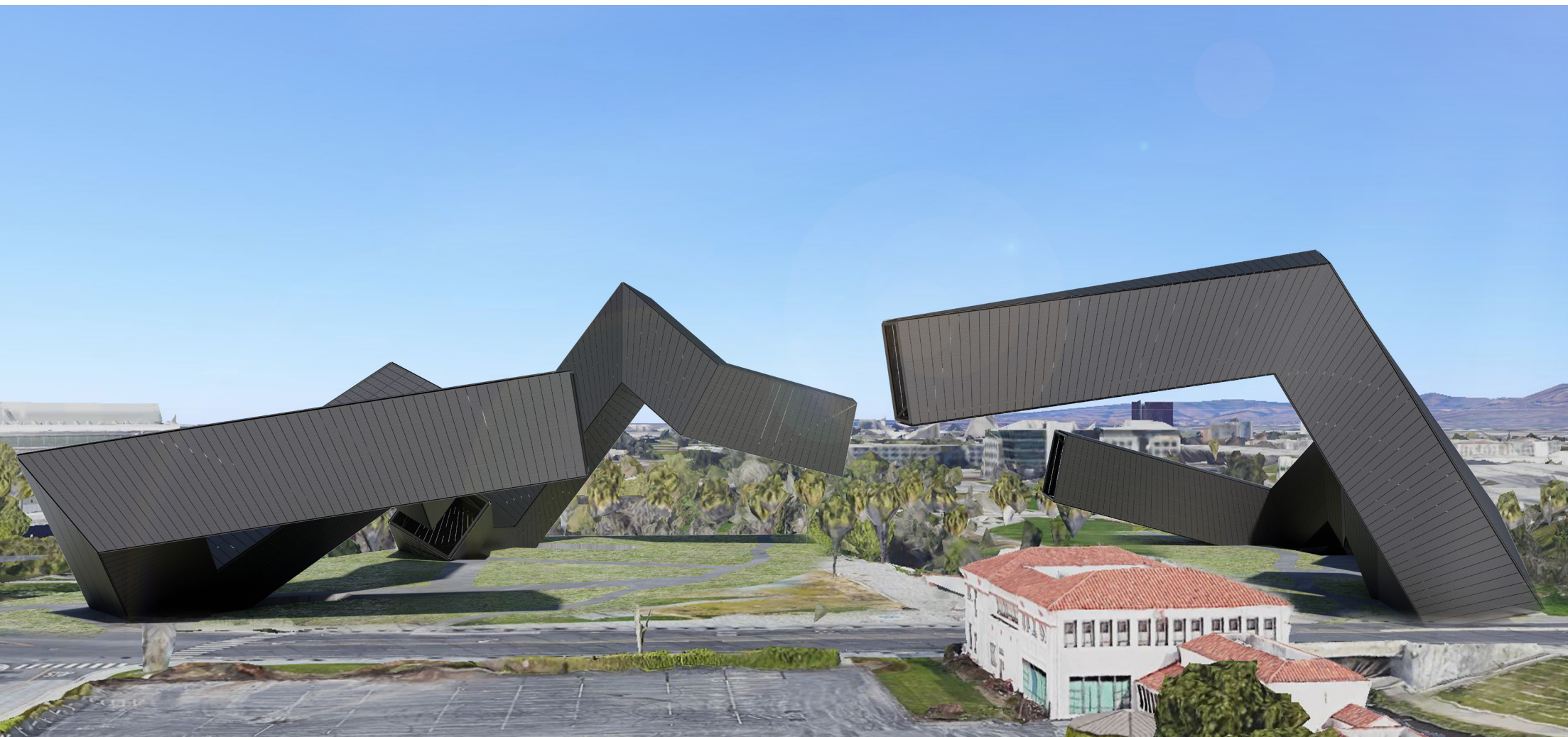
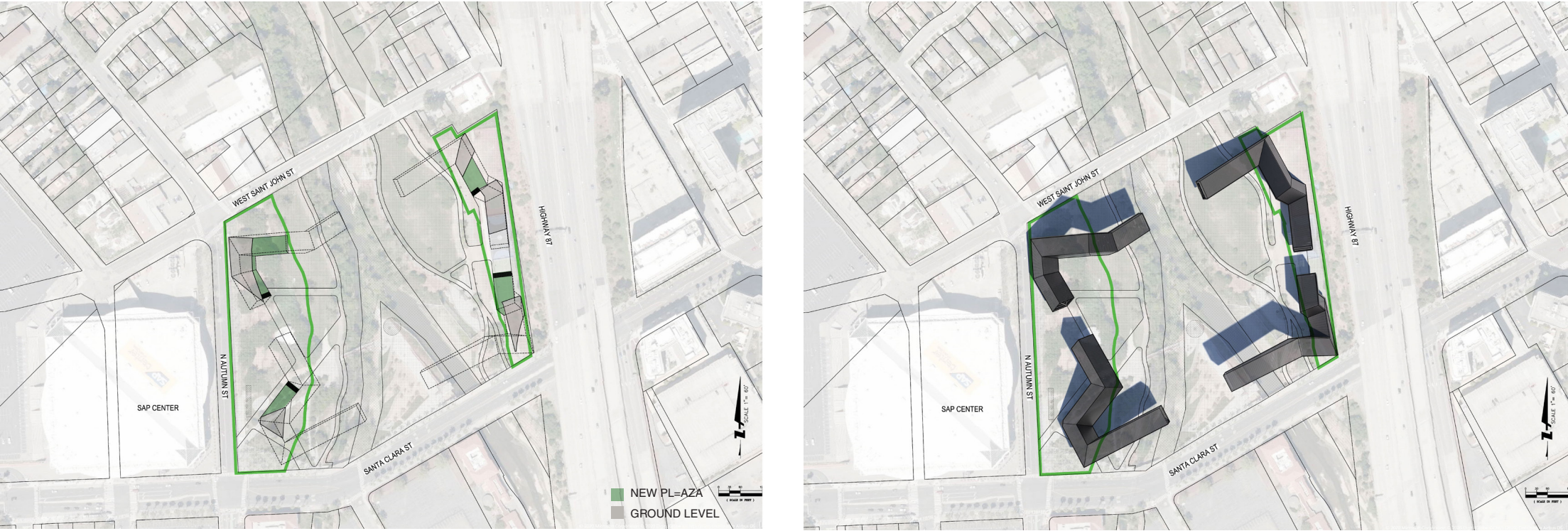


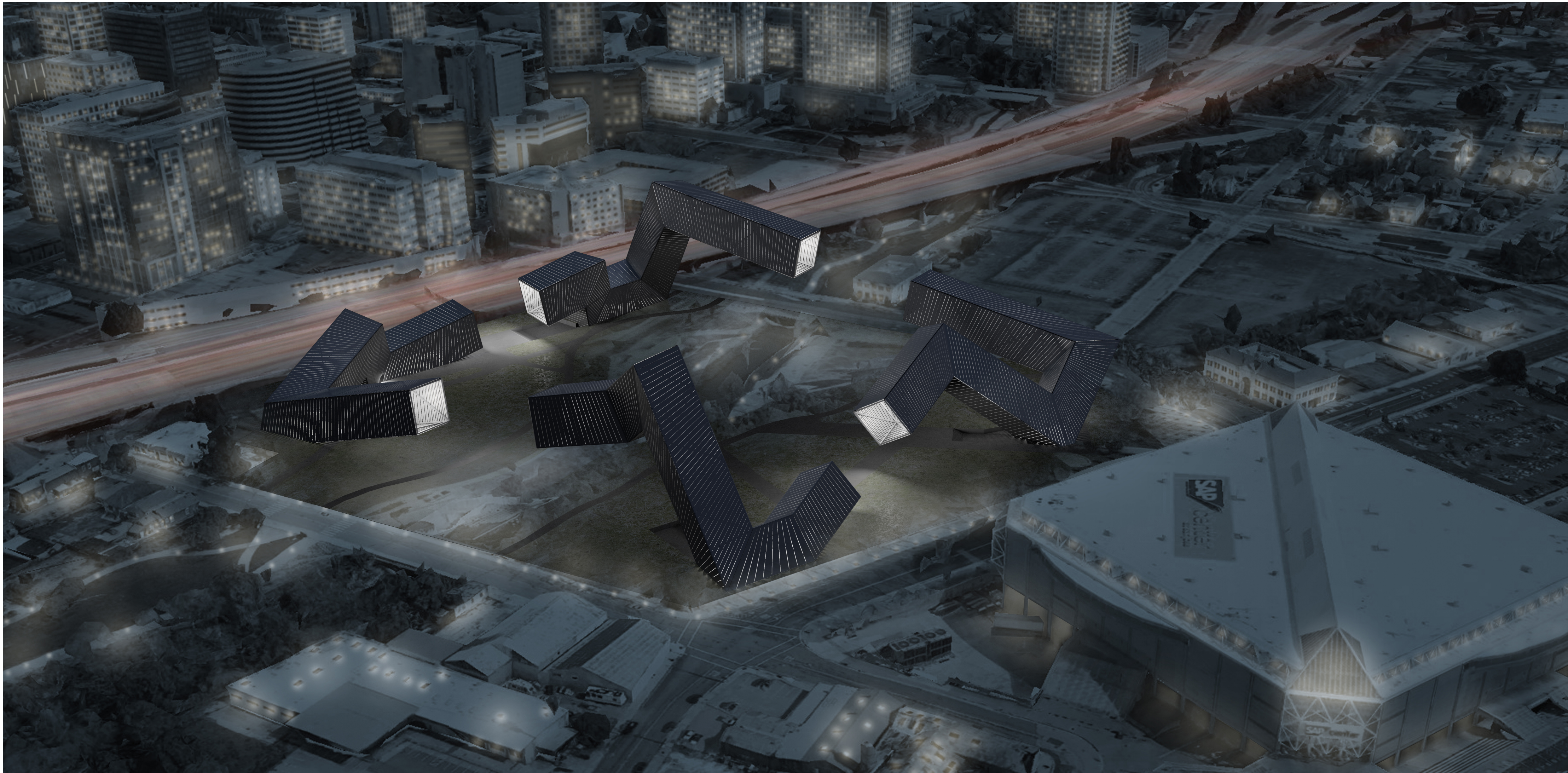


TWISTED CONNECTIONS

To celebrate the unique spirit of Silicon Valley, this proposal creates four monumental occupiable structures at each corner around the perimeter of the site. The form takes on various postures to create four separate characters that can be seen as individual parts, but also connect together visually to define a community gathering space.

The entry of each building is located slightly sliced into the ground so that it is invisible from the street, and also create individual plazas underneath each tower. The entry is positioned so people are encouraged to go into of the park to get into each building. In response to the complex geometry, each tower is carefully designed to have its own circulation with special elevators and ramps in order to be accessible to all people.





The journey within each building is unique and differs from the others, but all end up with the observation platform located at the end of each tower which are pointing directly to each other to create a visual and psychological connection between people. The buildings are covered by black steel panels with thin vertical seams. During the day, the buildings are perceived as giant sculptural silhouettes that people can experience once they get inside. At night, the lights embedded behind the panels illuminate and change patterns, the buildings then become a light-
ing installation within the park.

Responding to the Net-Zero Strategy, the two ends of each tower are completely open to the exterior, which brings air flow into the structure for natural ventilation, as well as bringing in natural light during the day. The LED lighting also provide energy efficient lighting at night time.

