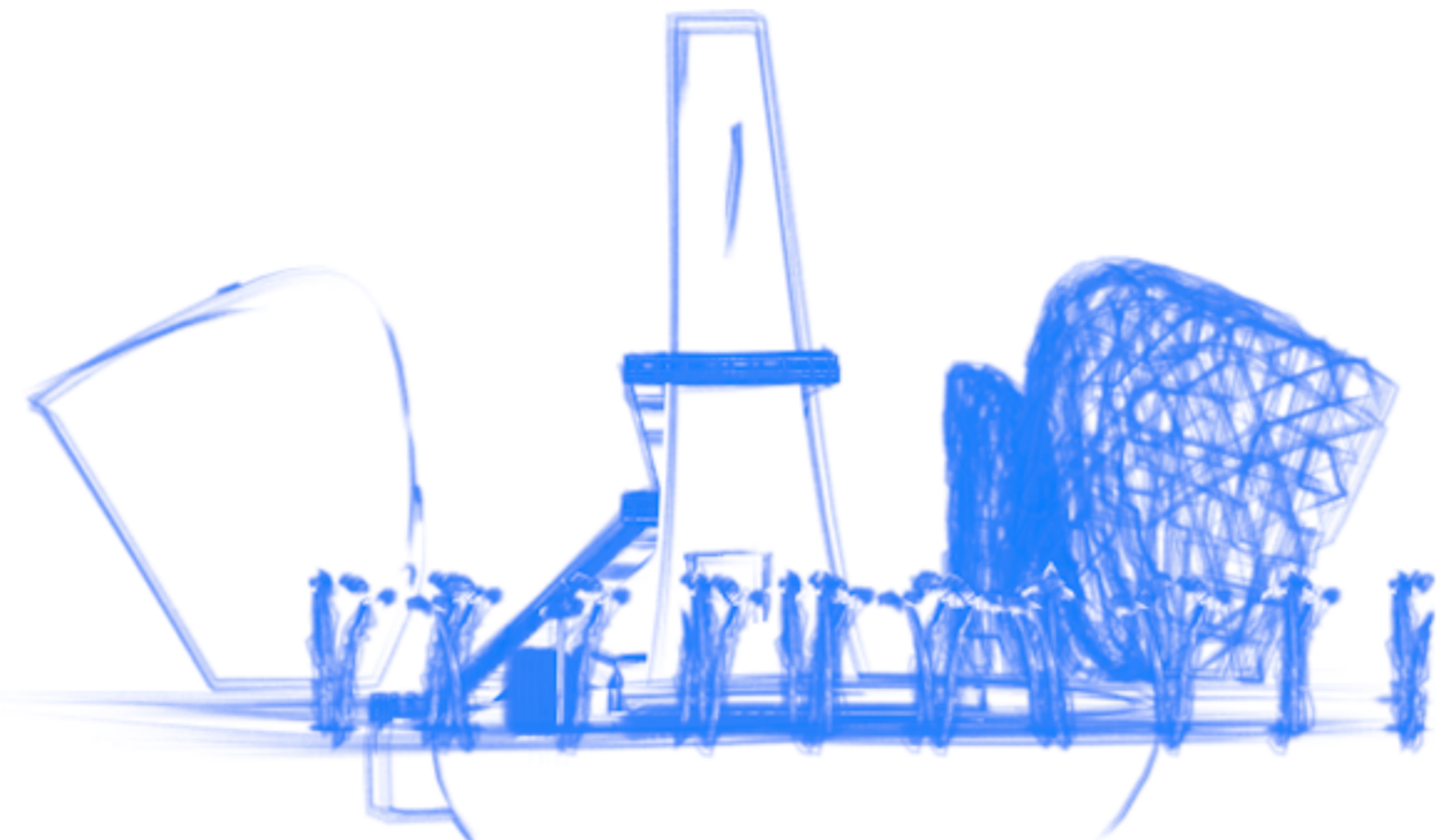
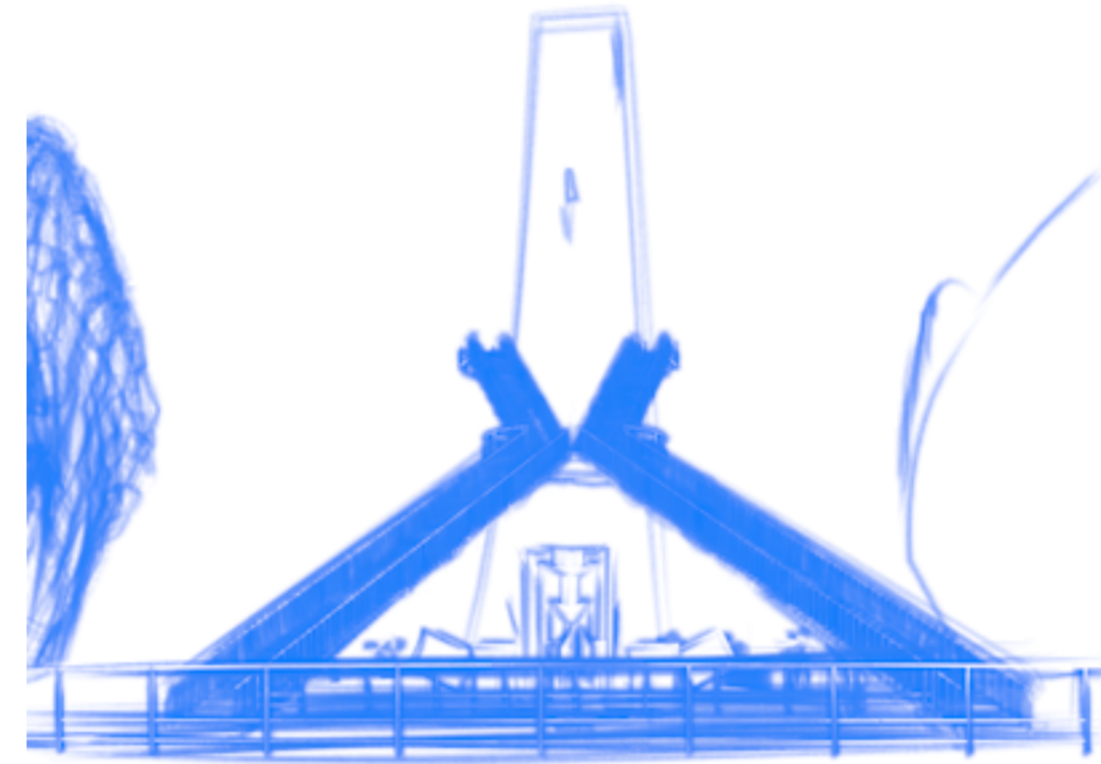
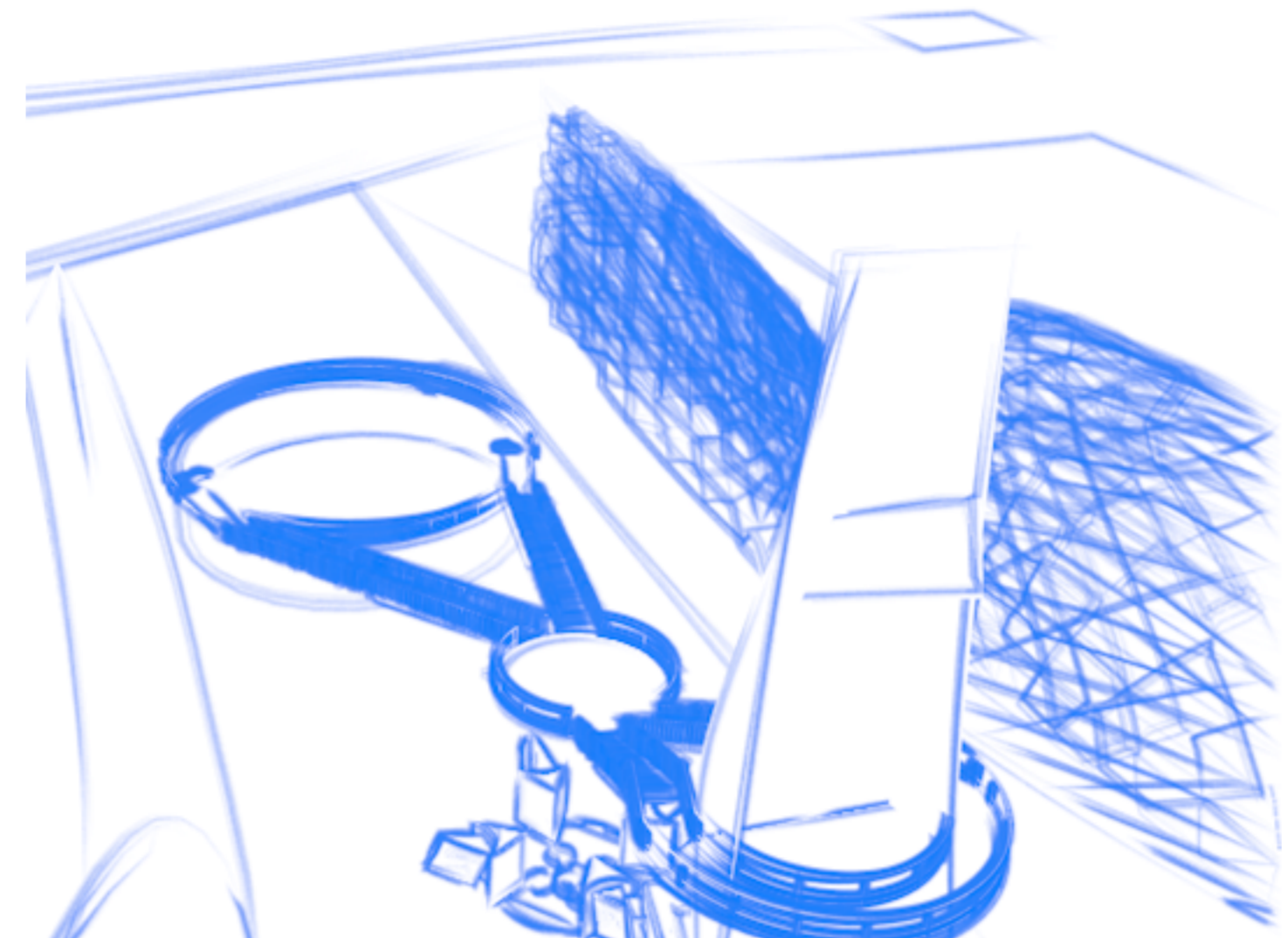


INNOVATION AND DOUBT : THE ETERNAL BRAID



SUMMARY

- Innovation
- Technological +
- Intellectual +
- Artistic +
- Scientific +
- Theological +
- Existential +
- Sociological +
- Cultural +
- Legal +
- Political

Births it opposite : Doubt.
Nothing's an absolute.

All's in conflict with its opposite.
Together they form an eternal braid.

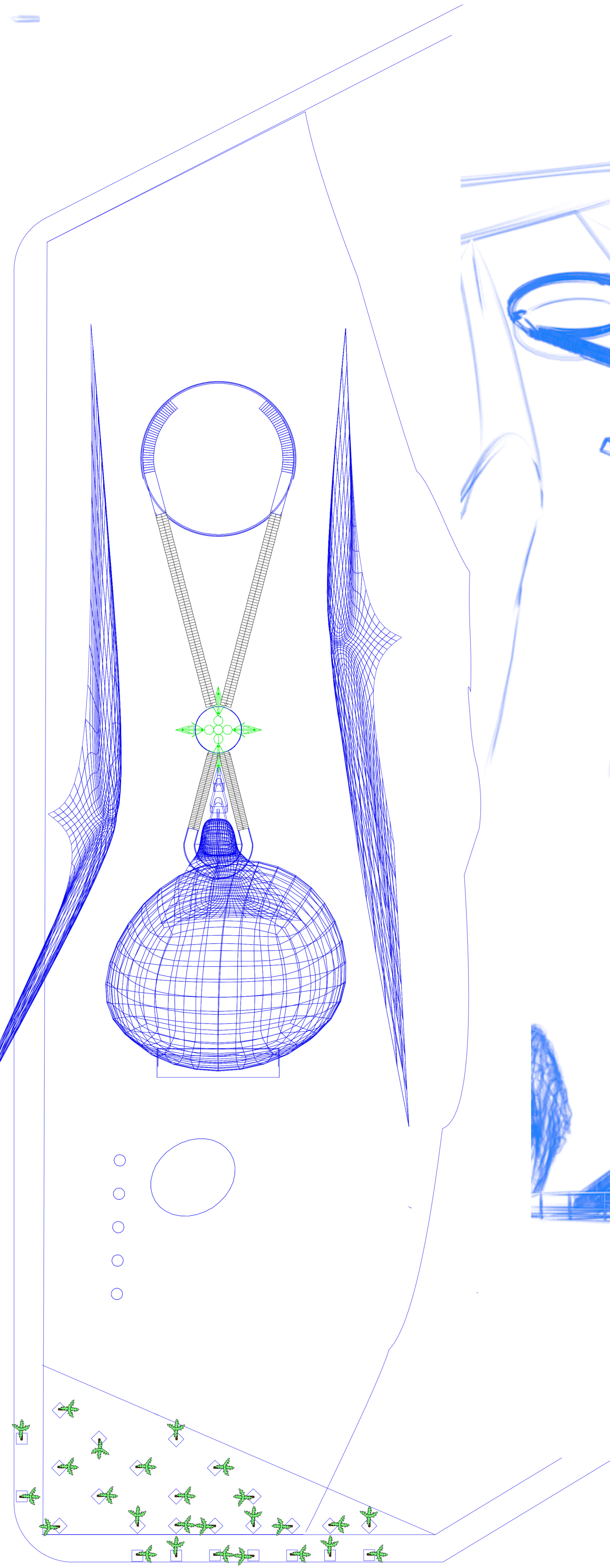
Fountains :
nozzles braiding water hope braiding will.
Water can be success or failure -
history or now -
fallout or pushback.

Innovation making habit unfit.
Tears try to become God.

PLAYFOUND's an invitation to engage,
to play, to pander, to climb,
to ride, to resolve.

A place where you can be actor then audience -
coder then program -
fountain then water.

Welcome



PLAYFOUND

A Place to Play, Picnic and Ponder

PLAYFOUND

A Place to Play, Picnic and Ponder

FOUNTAINS - nozzles braiding water, hope braiding will.

The water represents our actions both conscious and unconscious. Both intentional and serendipitous. Both personal and corporate. These actions could be manufacturing or innovative design or giving speeches on how people can relate to one another.

Most actions attract no tributaries, but some enough to sculpt the Grand Canyon or become the global operating system.

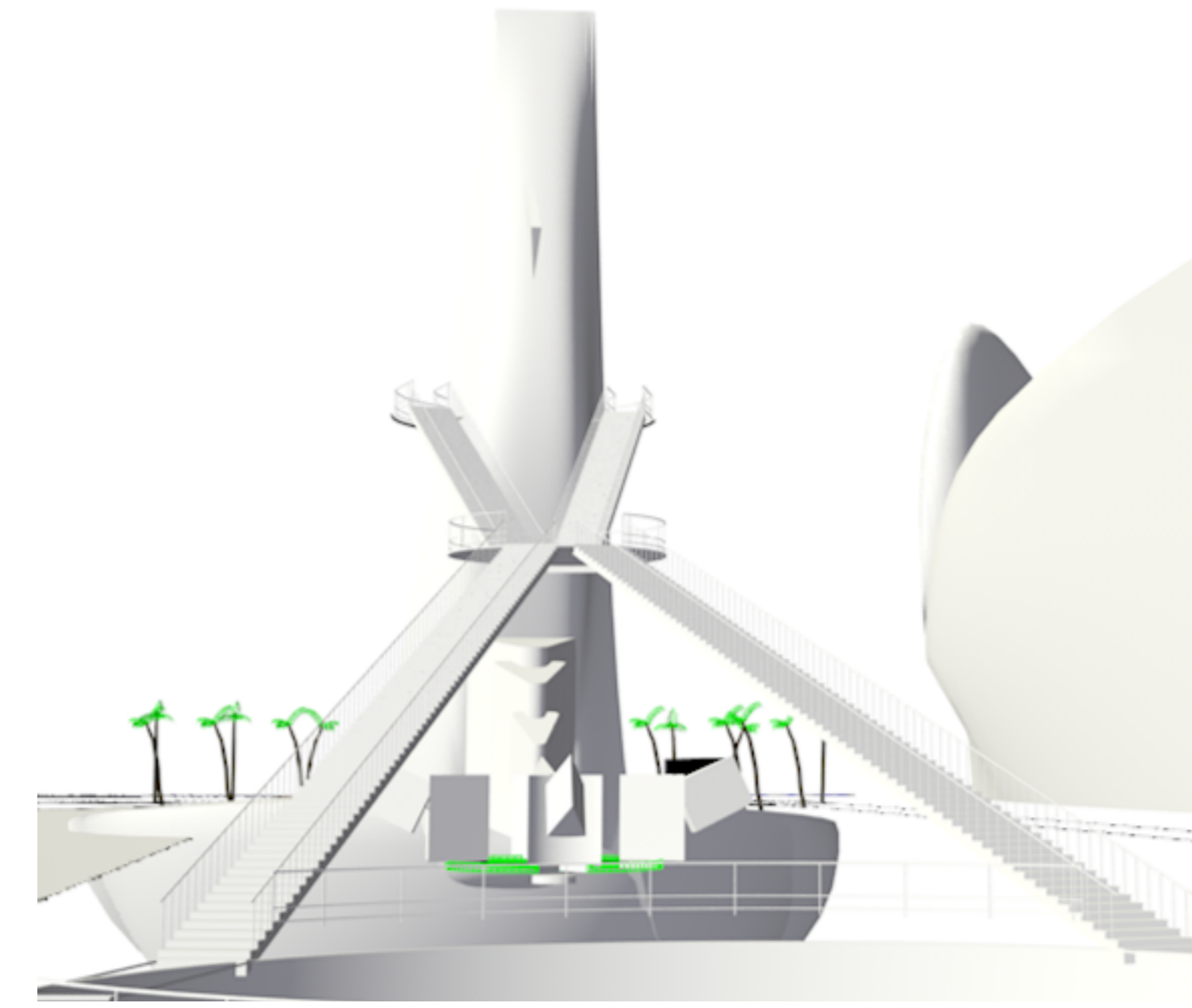
Actions fight entropy. Water fights gravity. Different settings - different meanings. The flowing water depicts the various ways Innovation is received. At times just a trickle of near irrelevance. At times a beer overpoured. At times a squall. A new epoch follows a tsunami. The varying levels of the innovation's success is depicted by how high the water flows up the FOUNTAIN OF UNGER and its volume. The FOUNTAIN is 107.7 feet tall and 66.5 feet wide at its base.

Innovation is on a continuum from micro to macro. When it's epoch making it's a wedge spilling a log. A razor beginning surgery. An insight flying ignorance. Tectonic plates raising a mountain. The continuum of effect depicted by water dribbling or misting or flowing or drenching. Depicting all the different ways the WEDGE OF INNOVATION interacts with our psyches.

The Southern part of the PLAYFOUND depicts Innovation. Its origins, manifestations and effects. On the deck floor of the LOOK BEFORE YOU LEAP are quotes from innovators. The LOOK is the platform over the South edge of the CAULDRON OF CREATIVITY. At times the waterfall underneath the LOOK is a bare trickle. At times a hurricane. At times the CAULDRON a placid tarn rippled by the wind. At times a seething of frustration and possibility.

At times javelin water is hurled from the CAULDRON up the FOUNTAIN. At times the FOUNTAIN is parched.

The Northern part depicts our response to Innovation: Doubt. The effects of Innovation fall from the end of the WEDGE be they individual stress or global pollution. At times drops -- at times a deluge falling on three RESERVOIRS. The first and largest is STRESS. The middle one REFLECTION. The third AGENCY.



We can descend the STAIRS OF UNDERSTANDING and delve into our past to dwell in our origins - the ground we grew from as we stand in the ORACLE OF OUR PAST. The walls are 15.7 feet tall. The space is 41 feet in diameter. Projected on the wall are images of our earliest tools. Chipped stones, bones and fire. Images from around the World.

History unfolds. We see our first cave paintings. We see early fields with each member of the group taking turns standing guard to chase away birds from the newly planted seeds.

We early settlements. We see copper being smelted. We see wheels being crafted. We see vacuum tubes glowing. We see ENIAC. We see the IBM 360. Apple II. Quantum computing.

We continue on the STAIRS or ride the TRAMWAY OF INTUITION. We ascend seeking perspective. We stop 41 feet in the air and look down on the MORAL COMPASS with space enough for one individual at a time to respond or commit to a course of action.

to the West is half the FUNNEL OF HUMANITY: culture and law formulating this moment. It rises out of the ground as barely rusticated stone morphing into seamless concrete morphing into tinted glass. To the East is the other half of the FUNNEL OF HUMANITY: our relationship to Planet Earth. This is a stainless steel mesh serving as a trellis for a variety of flowering plants. The ideal is to always have something blooming.

You can think of the halves of the FUNNEL as being Potter's hands formulating this moment when one person contemplates how can Innovation has affected her. Does she embrace it wholly or regulate it or destroy it? Fight or Flight?

We continue our ascent on the STAIRWAY OF UNDERSTANDING trying to decipher how the Innovation is changing us: How do we feel? What do we think? How should we respond? At the top we get a different perspective of Innovation. In one sense we're closer. In another our perspective is artificial - it's not the way we live day-to-day. But we commit our insights to memory. We descend.

Back on Earth. Grounded. I walk toward the MORAL COMPASS. Space enough for one at a time. Four almost identical sculptures mark the cardinal points. On the South Point is etched the word CHALLENGE. To the West the word is CULTURE. To the North the word is MEMORY. To the East the word is



EARTH - Los Gatos Creek and the Guadalupe River remind me that one day I'll swim to the Golden Gate.

There must have just been a first time new. Water streams down from the WEDGE OF INNOVATION. It hits the first RESERVOIR OF STRESS. It fills and flows into the second RESERVOIR called REFLECTION. It fills and flows into the third called AGENCY. As the third fills it flows on to South Cardinal Point. Holes are bored through the stone allowing the water to flow down and into a tube which pierces the sculpture. The water flows out and down splashing on one of the four reflecting pools. Via concealed piping water flows out of the tubes of the other Cardinal Points at various speeds and volumes. The floor over the center pool where the INDIVIDUAL is poised is glass. He can look down and see how all the rippling disturbance patterns.

At night uplights at the bottom of the pools have the rippling water reflections dancing on the Cardinal Points and the underside of the STAIRWAY and TRAMWAY.

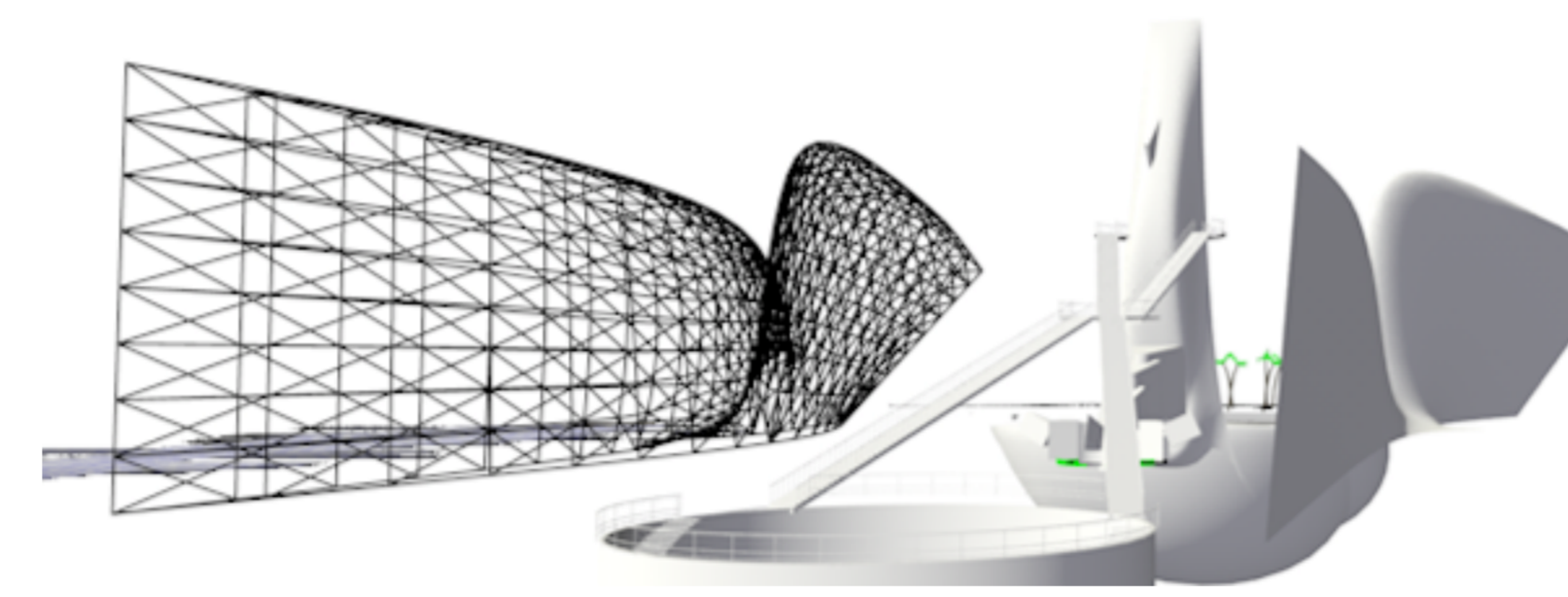
As I stand in the MORAL COMPASS the default values of the FOUNTAIN OF UNGER's controller rolls through its program.

At times the water bubbles slightly on the South face of the FOUNTAIN. At times it gushes upward flowing flowing HI gravity gains the upper hand and it falls. At times there's a sheet of mist flowing from the WEDGE OF INNOVATION. At times there are drops flowing from the North end. At times a drowning deluge. At times the water's hurled up the FOUNTAIN from the CAULDRON with such force it flows round the top most curve and is flung into space raining down on the CAULDRON. The Visitor-User can bring up the PLAYFOUND APP. Can play a game and if a winner can either play the Fountains or have them play to a piece of music selected by the V-U.

At times a nozzle in the RESERVOIR OF STRESS will emulate an epoch making INDIVIDUAL INNOVATOR responding to technological Innovation. Like a geyser water will sub upward colliding with the fallout from the WEDGE OF INNOVATION.

At times driving the WEDGE'S flow all the way back to its nozzle. All choreographed by a server, controller, pumps and nozzles.

When motion detectors sense Visitor-Users at night the water fountains can turn to light fountains. If there're few V-U's those here can use the APP to set their involvement level. They can choose to be randomly soaked or remain dry by lower water flows or just using LIGHT FOUNTAINS.



The TRAMWAY OF INTUITION can accommodate two wheel chairs and four standing or it has fold-down seats for four adults, two kids and four standing.

The STAIRWAY OF UNDERSTANDING wants to be as transparent as possible. A grating so when wetted by unruly Fountains they'll dry quickly. Matte finish Stainless Steel to reduce maintenance.

It's not drawn so as to not intrude on the purity of concept, but for safety there's a canopy over the MORAL COMPASS to protect the SOJOURNER from dropped keys and ice cream cones.

NET ENERGY ZERO?

There're elevated racks of photovoltaic arrays adjoining the tennis courts. They provide shade for the players and rooting for birds and bats. Tesla batteries will provide power at night and on cloudy days.

When motion detectors indicate no one's in the PLAYFOUND or parts are unused they're powered down.

The non-electronic text throughout the PLAYFOUND is in English, but the APP will allow a Visitor-User to hold her phone up to the words and see a translation. There're audible messages for wayfinding and narration for those with visual impairment. Projections and video are in the artist's language.

Planning a visit? The APP advises when the PLAYFOUND is the most quiet and when most noisy.

The APP provides a list of which food trucks are currently serving and where there's parking.

Lighting is controlled 24/7 to protect birds, bats, insects, fish and turtles. The APP advises Visitor-Users when lighting effects will be diminished.

Invitation? The west wing tip of the FUNNEL OF HUMANITY soars over North Autumn Street near the intersection with Santa Clara Street inviting drivers, pedestrians and cyclists to venture in.

Invitation? From quite a points of view folks will see people walking in the air. They can't see the perches along the STAIRWAY + TRAMWAY. Answering the question How beckons...

The TRAMWAY OF INTUITION is not drawn. It replaces the West STAIRWAY.]

INNOVATION AND DOUBT : THE ETERNAL BRAID