

# VEILING TOWARDS AN ECOTOPIAN FUTURE

° TO VEIL ° TO CONVERGE ° TO FLOW ° TO ACTIVATE ° TO FILTER ° TO ANIMATE ° TO RETROFIT ° TO VEIL ° TO CONVERGE ° TO FLOW ° TO ACTIVATE ° TO FILTER ° TO ANIMATE ° TO RETROFIT ° TO VEIL ° TO CONVERGE ° TO FLOW °

A monument that augments our communities and their relationships between human and non-human.

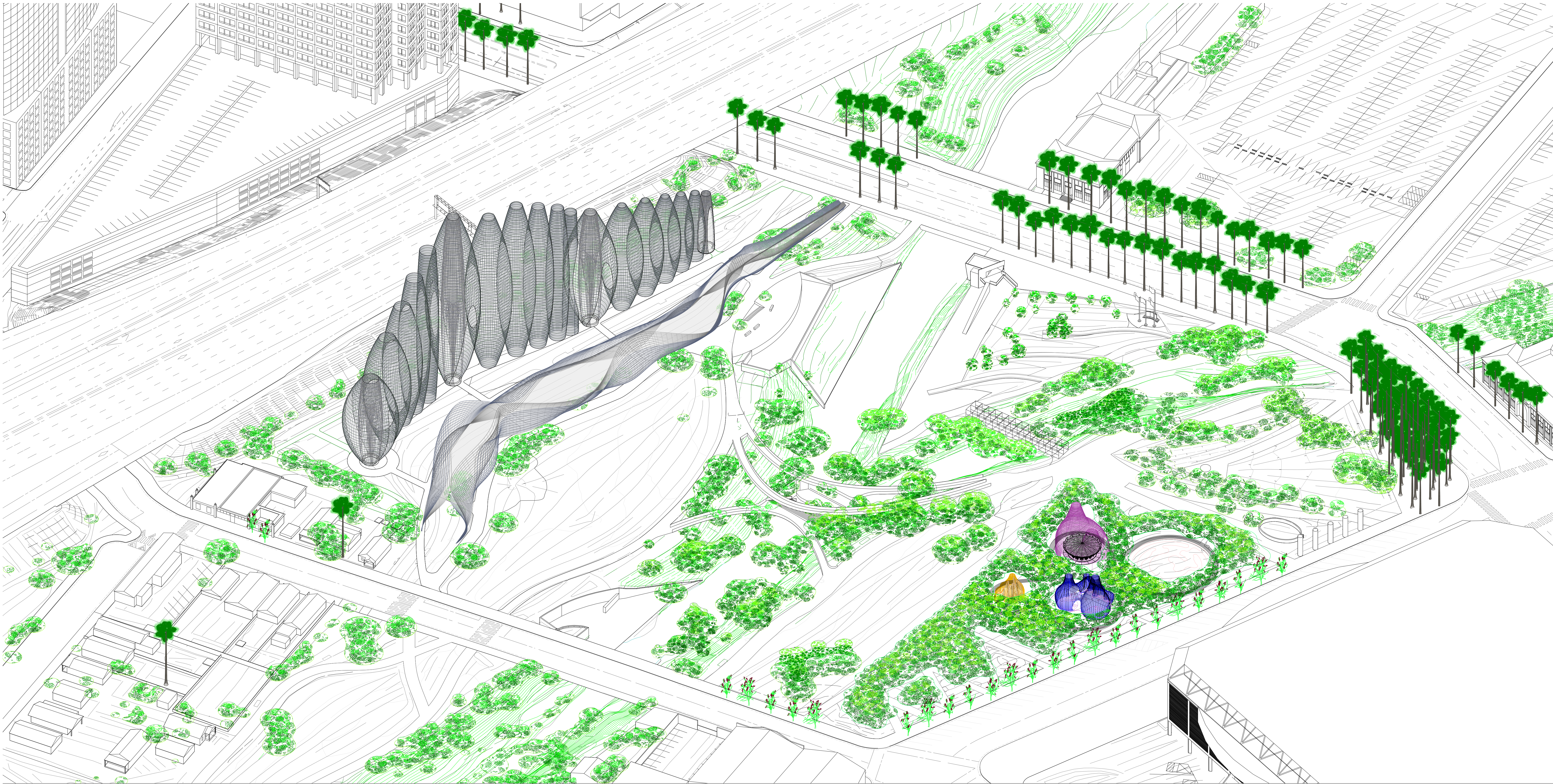
The site acts as a canvas for introducing a series of monumental to minimal interventions. The design creates extroverted to introverted community experiences through a series of socially activated "veils." These veils activate the existing park through a series of retrofit interventions (that preserve existing program while bringing new life to the often neglected western side of the site), an amphitheater bridge (that both creates new pathways and serves as a window to the confluence point), and a monumental series of veiled towers that act as a filtering system and buffer from the freeway.

These interventions create experiences engaging the region's culture of innovation as a catalyst for amplifying the social potential of the park. Multiple gradients and scales of experience and strong visual presence are informed by seasons, weather, daylighting, user experiences, and environmentally sensitive strategies. By utilizing carbon sequestering, air-filtering fabric on the eastern towers, recycled material throughout, and photovoltaics and bioluminescence for lighting, we craft a net-zero strategy that creates a welcoming park environment, aids in reducing harmful vehicular emission pollution, and creates an overall healthier environment in the city.

Our proposal materializes as a series of three significant yet surgical maneuvers that all work with the existing ecology of the site, and generates opportunities to discover what already may exist in new ways. The three-pronged design approach revolves around our relationship to humans, animals, and plants, and the natural environment as rendered through light, air, and water.

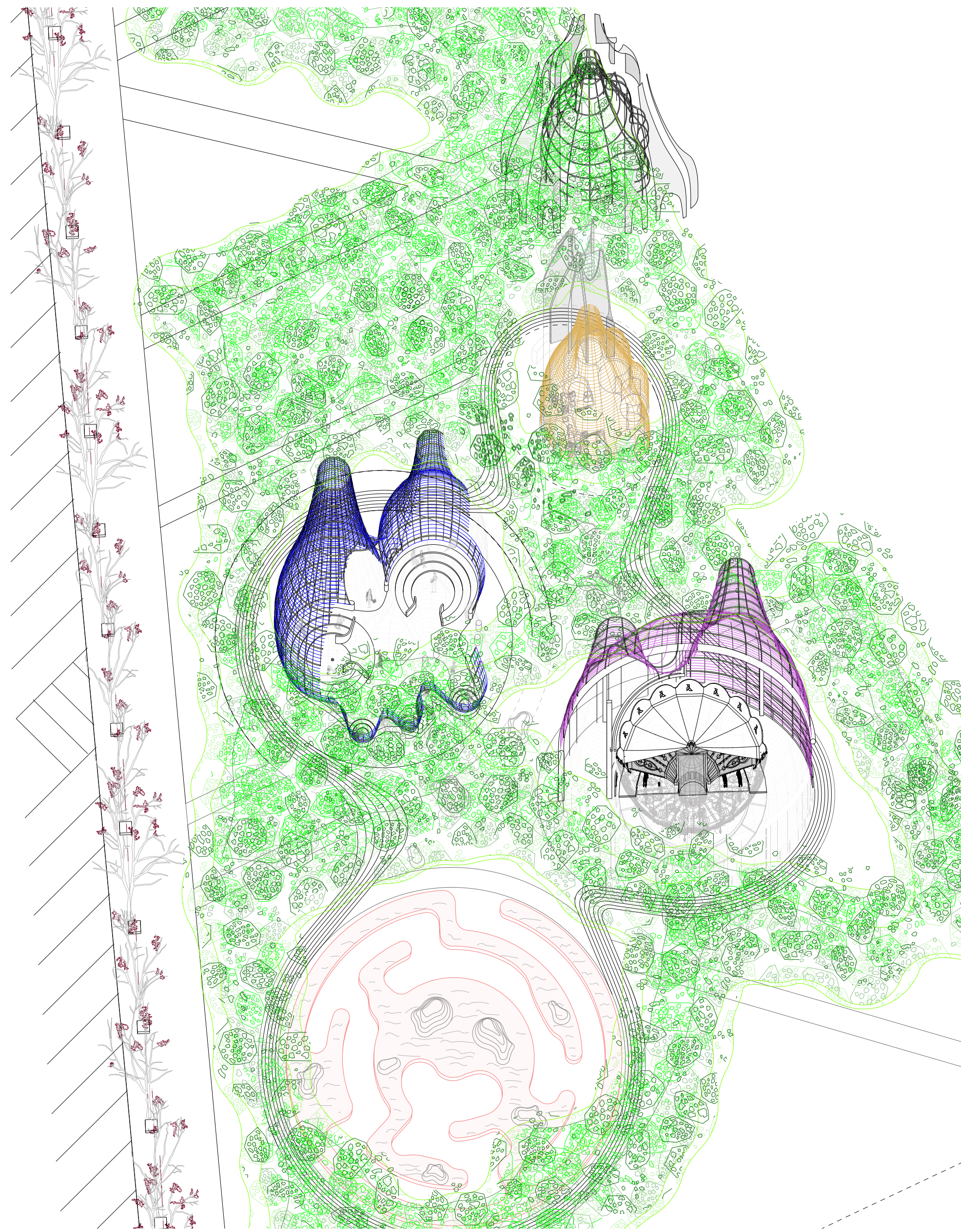
The park becomes an ecological safe space for anthro, zoo, and phyto entities. The river is embraced. Icons are made by plant, animal, and human ecologies. Through the veils, we may begin to imagine San Jose as a beacon of technological and ecological innovation, where all of the above must occur in tandem if we hope for any to occur at all.

Isometric view of competition site adjacent to the Los Gatos Creek converging with the Guadalupe River

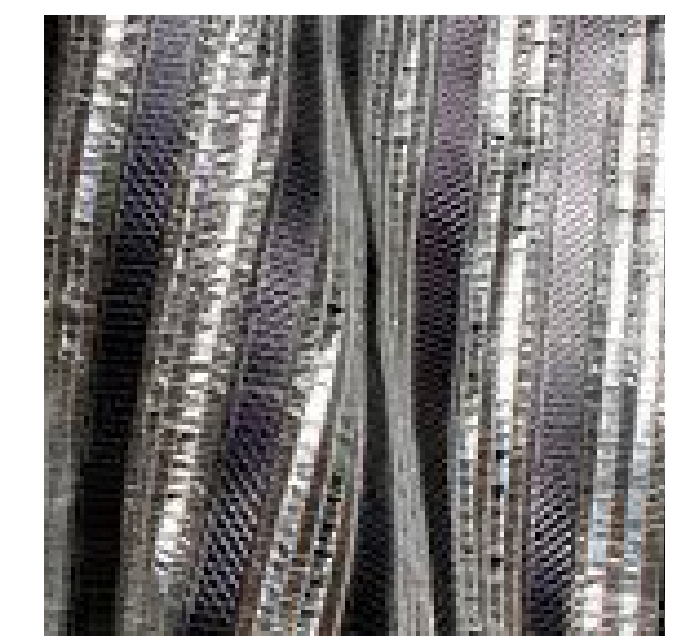




SITE PLAN SHOWING WESTERN, EASTERN AND BRIDGE INTERVENTIONS 1" = 65'



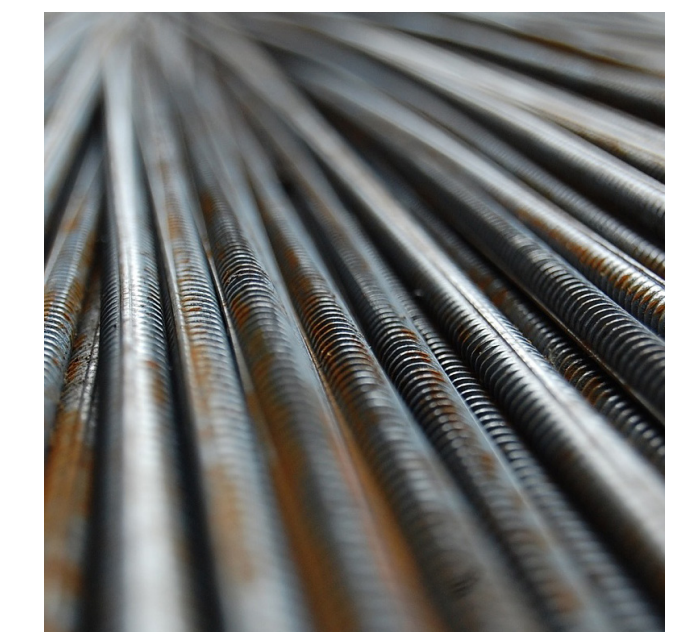
AXON SHOWING WESTERN INTERVENTIONS, LOOKING NORTH



PHOTOVOLTAIC FABRIC



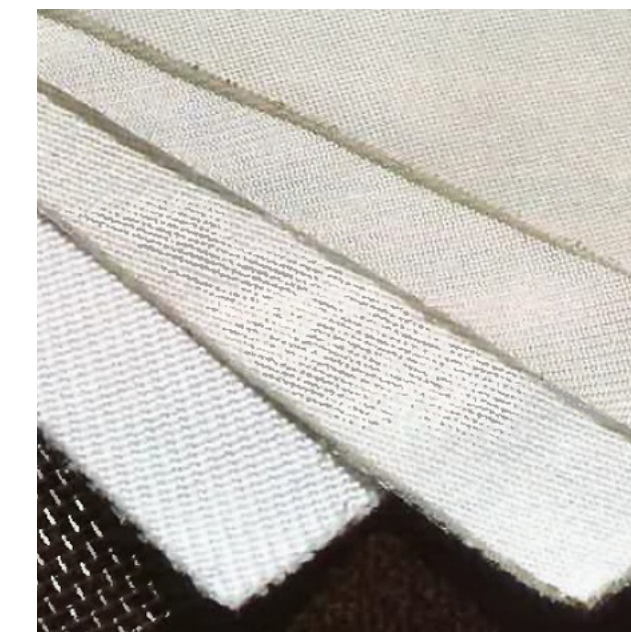
BIO-LUMINESCENT LIGHTING



RECYCLED STEEL STRUCTURE



SAVING ENDANGERED FLORA



CARBON-SEQUESTERING FABRIC

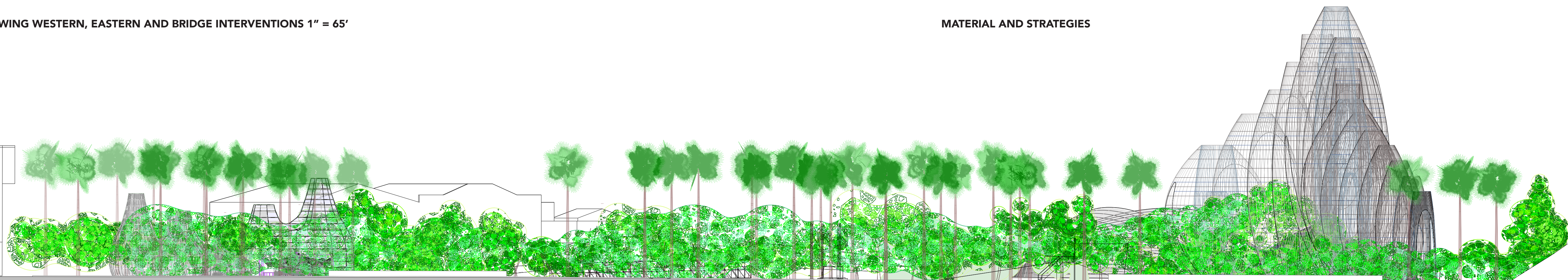


RECYCLED PLASTIC PANELING



PHYTOREMEDIATION PLANTS

MATERIAL AND STRATEGIES



A-A SECTION THROUGH SITE 1"=30'

