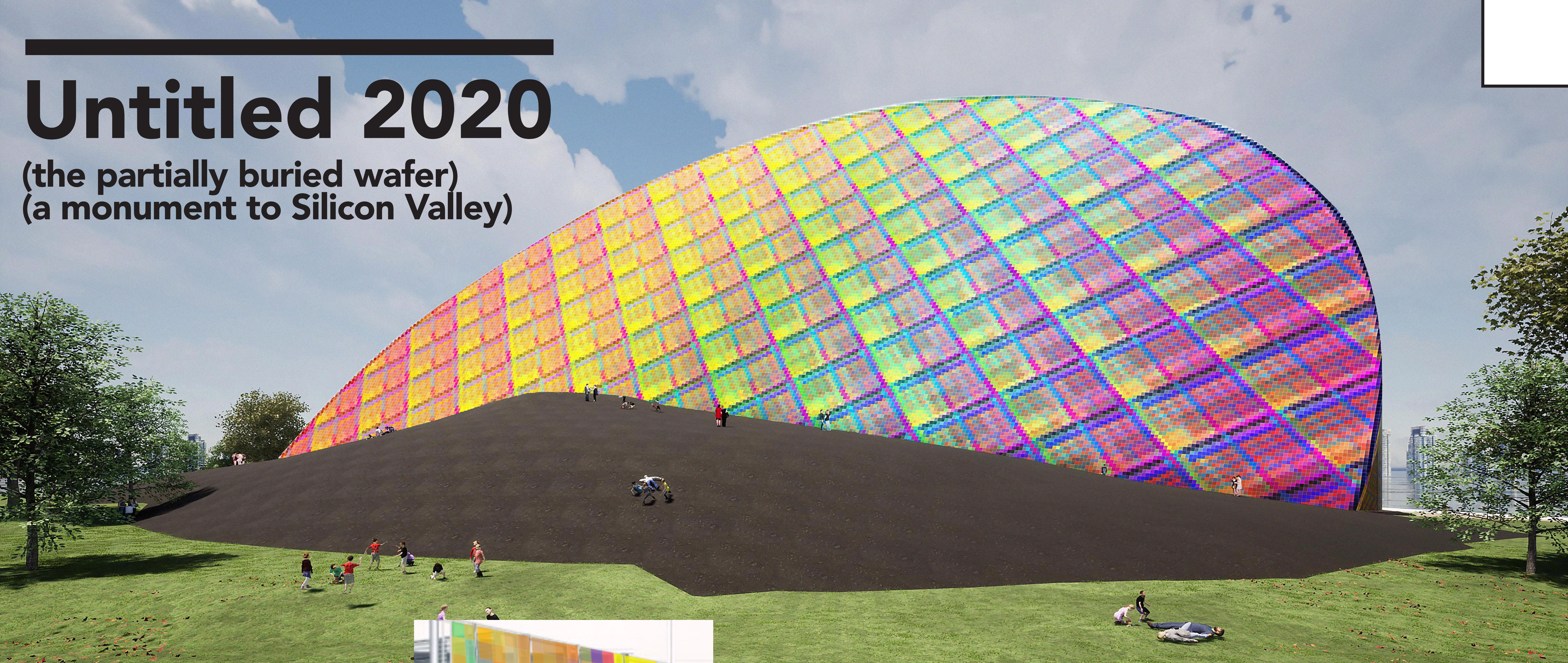


Untitled 2020

(the partially buried wafer)
(a monument to Silicon Valley)

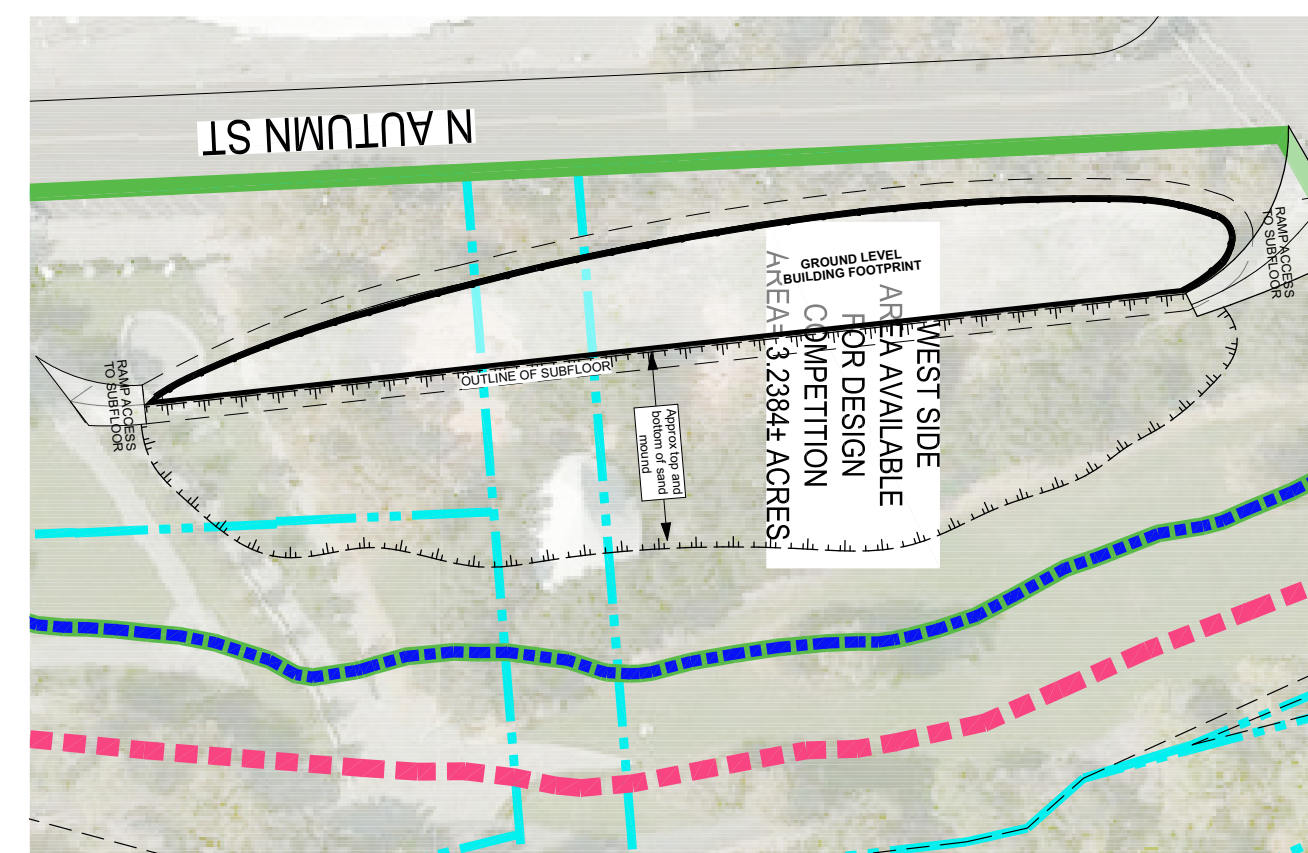


The monument depicts an enormous, pixelated image of a silicon wafer disk partially buried in the ground. Each pixel is comprised of a one-foot, square colored glass panel making up a larger digital image.

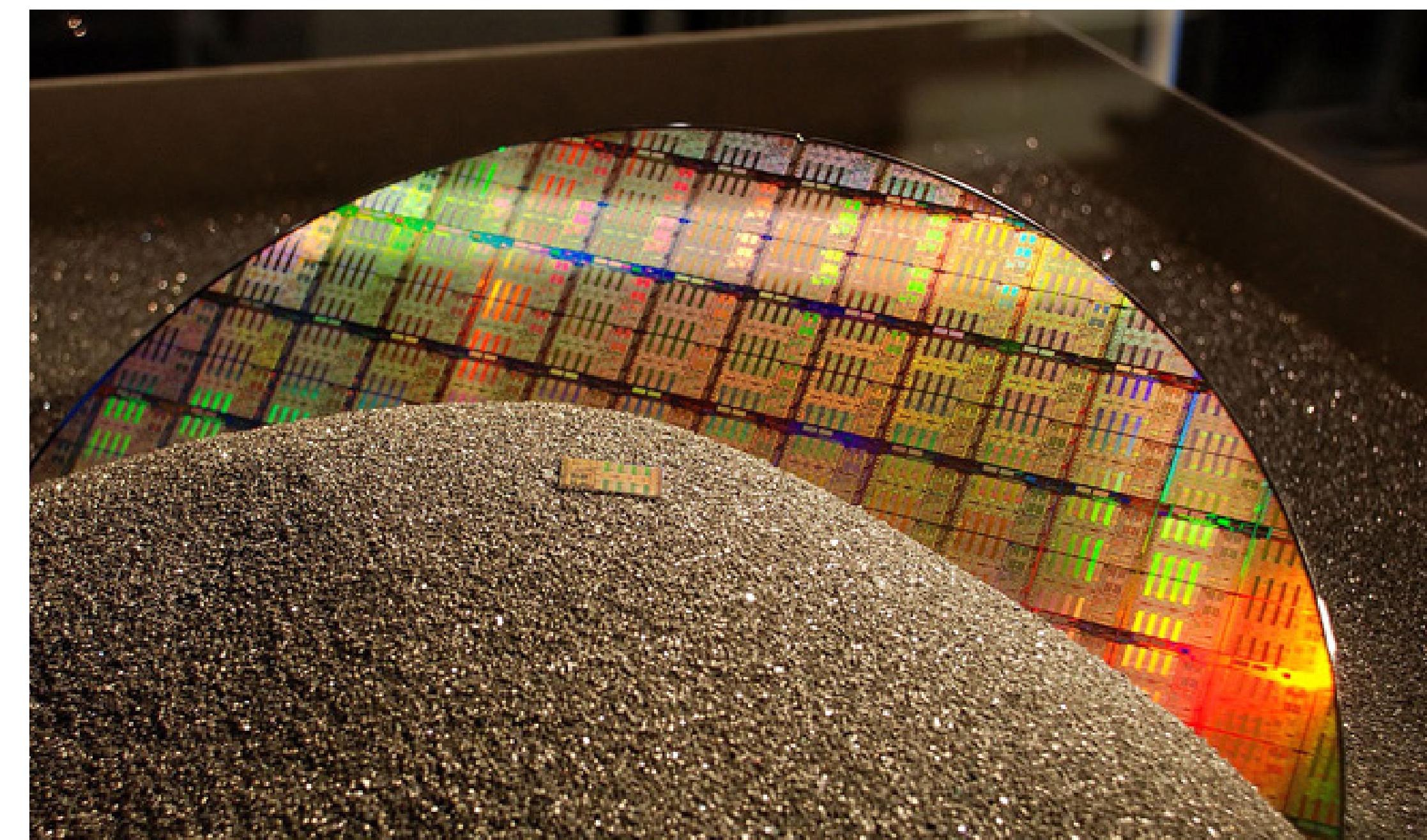
The giant earth mound resembles raw silicon sand, the base material of the computer processor, which remains one of the most important inventions in recent history.

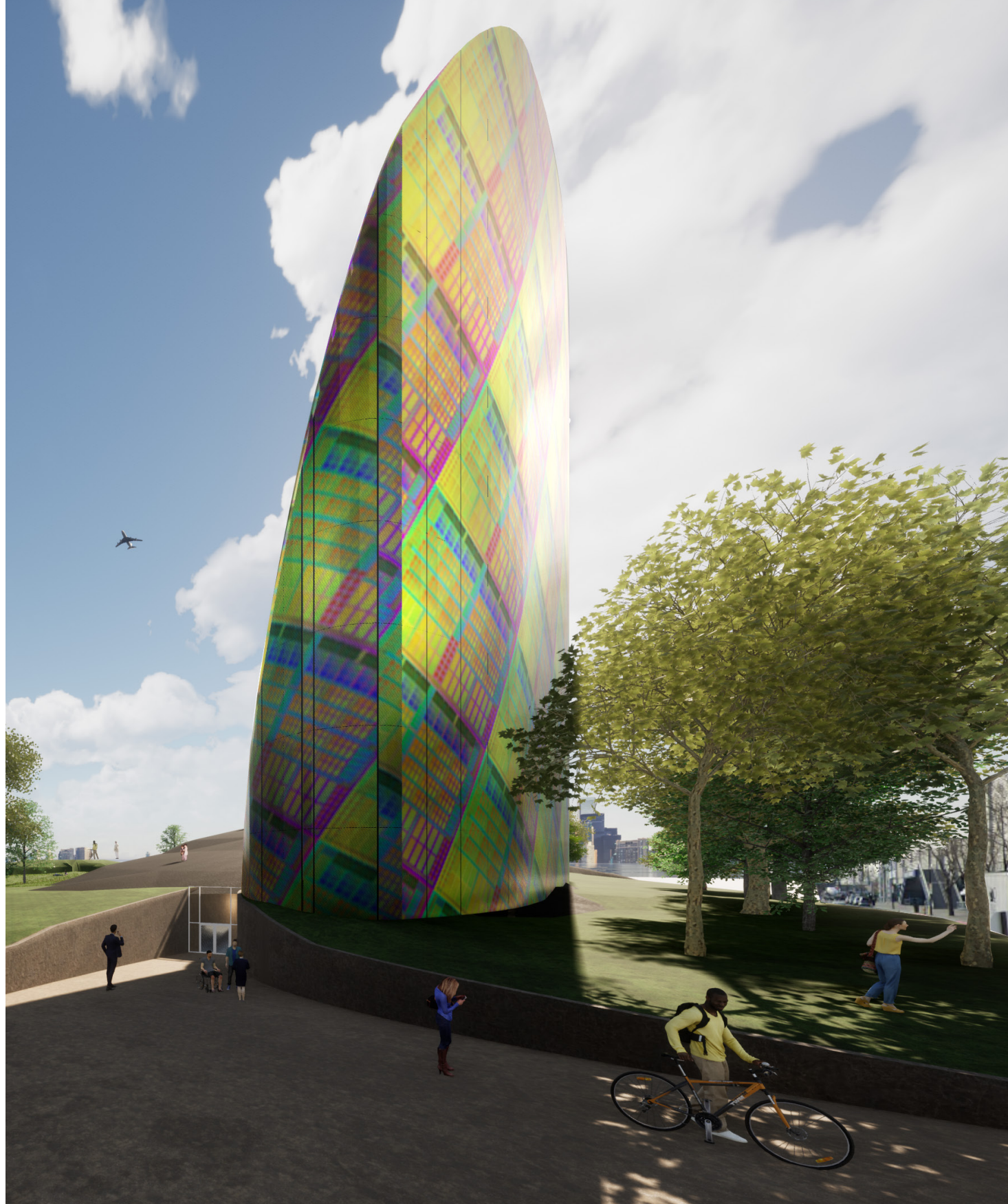
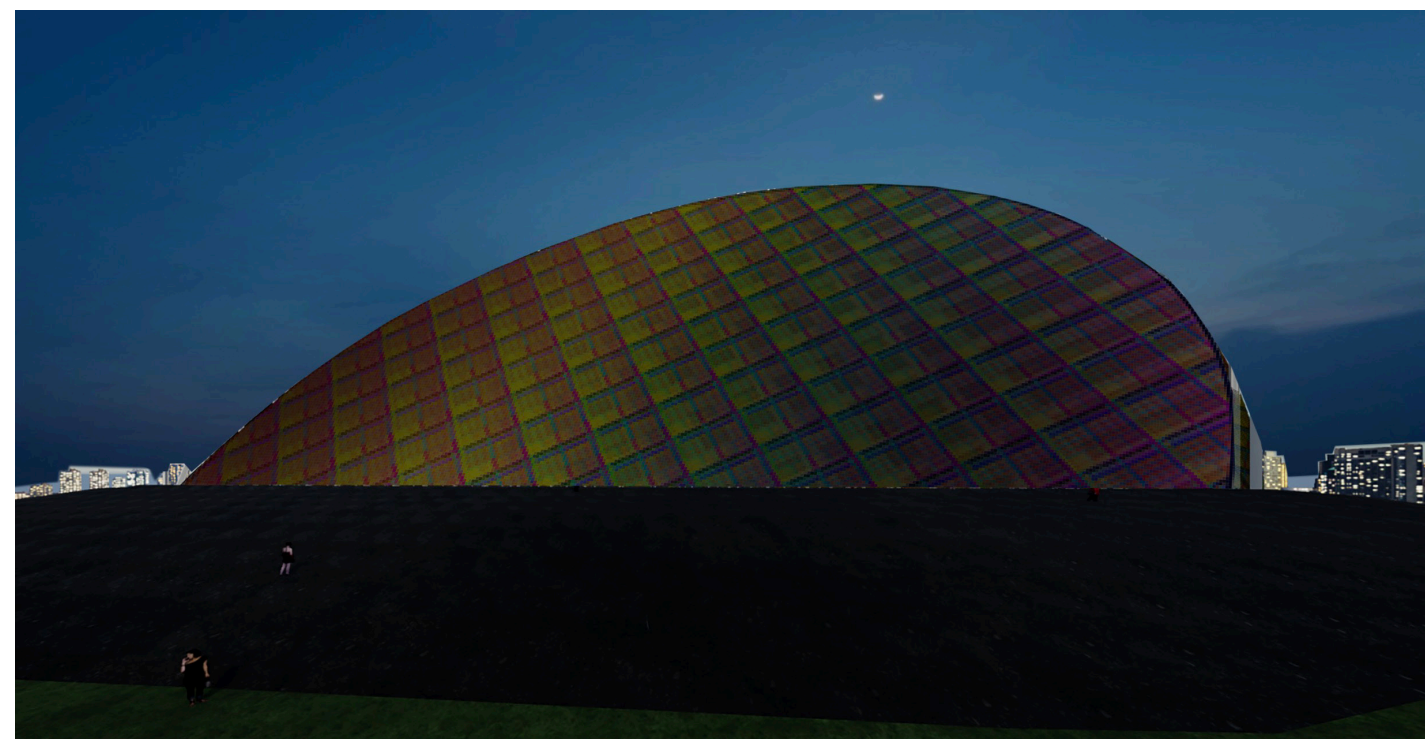
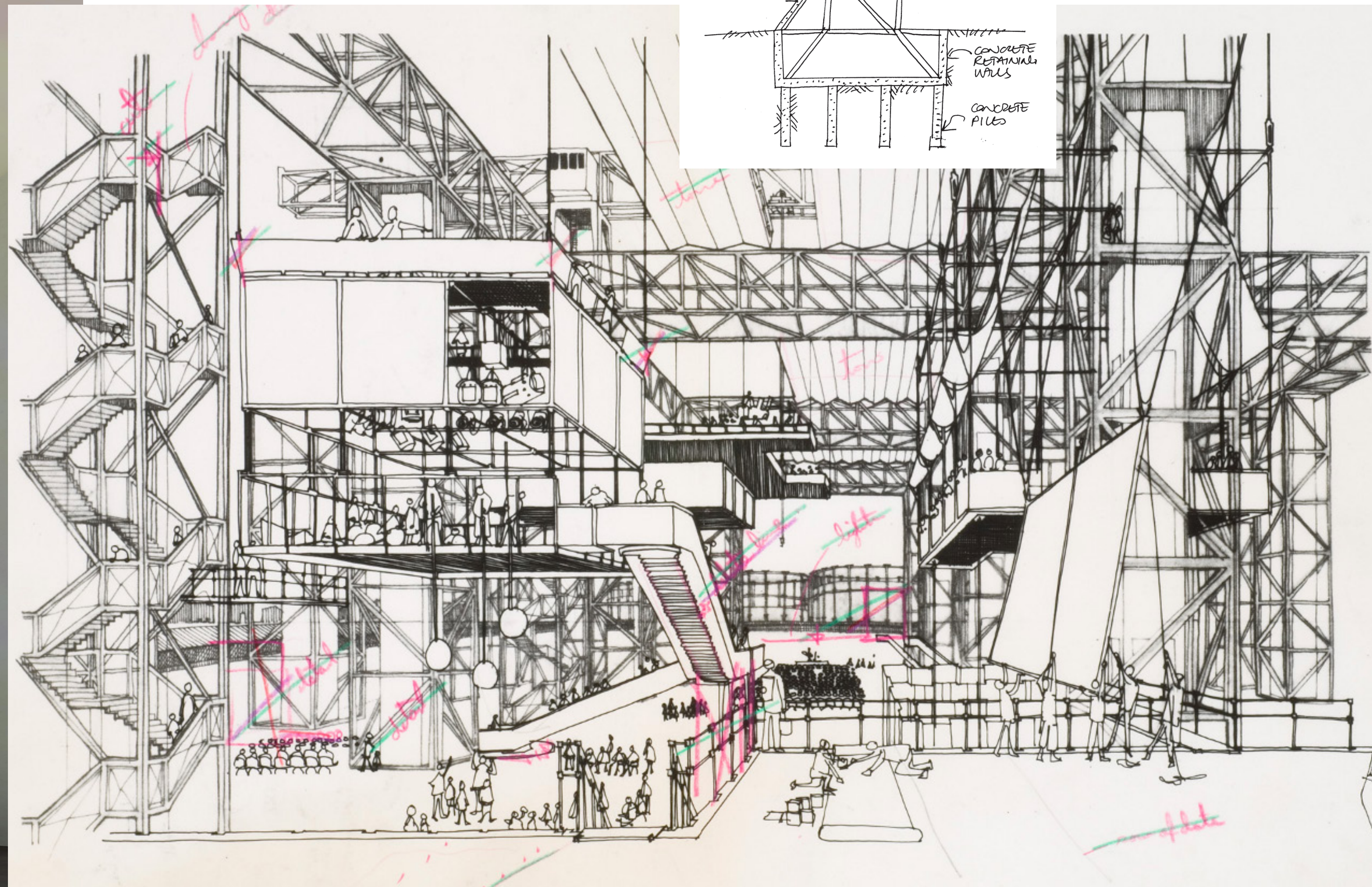
The remarkable transformation from sand to wafer symbolizes Silicon Valley's immense achievements for humanity.

This radical monument includes a multi-use interior that is programed in the footsteps of Cedric Price's 1960's "laboratory of fun", where all can visit, participate, create, perform and learn.



- Clockwise from top;
- 1 - Rendering of proposed monument
 - 2 - Image of silicon wafer in raw silicon
 - 3 - Location of proposed monument
 - 4 - Scale of coloured glazing system





Clockwise from top left;
 1 - Rendering of internal skeleton (multi-use infrastructure not shown)
 2 - Structural engineering concept
 3 - Multi-use programming reference image: Cedric Price's 1962 'fun palace'
 4 - NW Entrance
 5 - Site Context
 6 - Night renders

The structure honors Silicon Valley, its inventions and innovations, persistence and resilience, and the creators of the digital world and the people of San Jose.

It represents a place of crossroads, of multiplicity, of diversity, of histories, of personal stories and collaborative togetherness. A possibility of a future.

The image is a monument, but also an architecture, a building, a multiplex of facilities and utilities. Its uses are programmed for both external (the park) and internal activities in an underground complex with elevators, escalators, walkways, rooms and stairs within the wafer disk.

The project team is artist-lead and supported by experienced structural engineers and architecture practices.