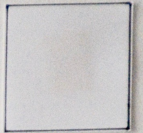


THE BIG SHH! and CABLE TOWER

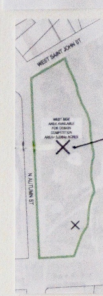
THE BIG SHH! and CABLE TOWER are components on two sites. The 40ft 'BIG SHH!' sculpture and 180ft circular 'Cable Tower', together celebrate San Jose as a global center of technological innovation, through use of data and material infrastructure.

Shh! is a multi-cultural, non-verbal gesture for quiet, secrecy and privacy. This chromed sculpture with whispering gallery references data protection.

The circular tower has a central core of eight active levels, each with an open air outer ring and magnificent lighting, including a garden rooftop and subterranean space. The design emanates from the gigantic spools that carry global Internet underseas cables.



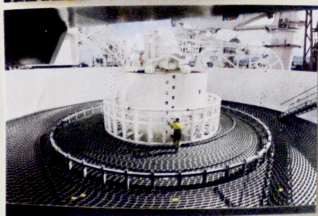
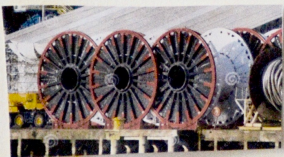
CABLE TOWER



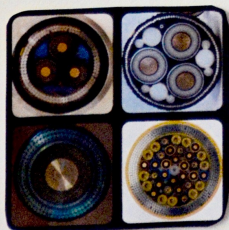
MULTI-COLOUR LIGHTING AT NIGHT



FIRST LIGHT TOWER



UNDERSEAS CABLE



180 FEET



ROOF GARDEN

- CAFE
- GRAFFITI ARTSPACE
- EVENT SPACE
- TECHNOLOGY
- TRANSITIONAL
- OFFICE
- ENTRY HALL

* FLOOR DESIGN - GLOBAL UNDERSEAS CABLE MAP

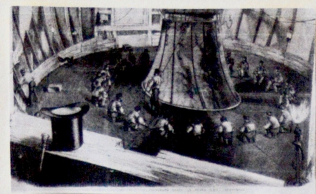
SUBTERRANEAN SKATEBOARDING



* FLOOR DESIGN



UNDERSEAS INTERNET CABLE MAP



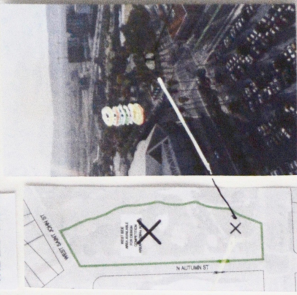
SHHI

THE BIG SHHI and CABLE TOWER are components on two sites. The other BIG SHHI sculpture and 'light circular Cable Tower' together celebrate San Jose as a global center of technological innovation, through use of data and material infrastructure.

Shhi is a multi-cultural, non-verbal gesture for quiet, secrecy and privacy. This chromed sculpture with whispering gallery references data protection.



THE BIG SHHI



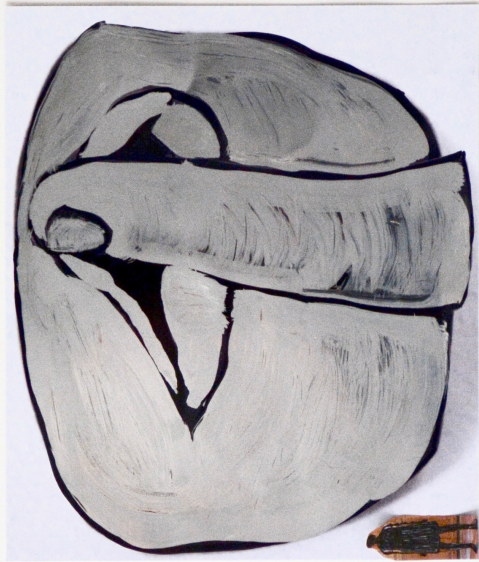
'LE POICE' DEBAC, PARIS



'CLOUDGATE' KAFKOC, CHICAGO



'REALLY GOOD' SCRECCER, LONDON



40 FEET

62 FEET

