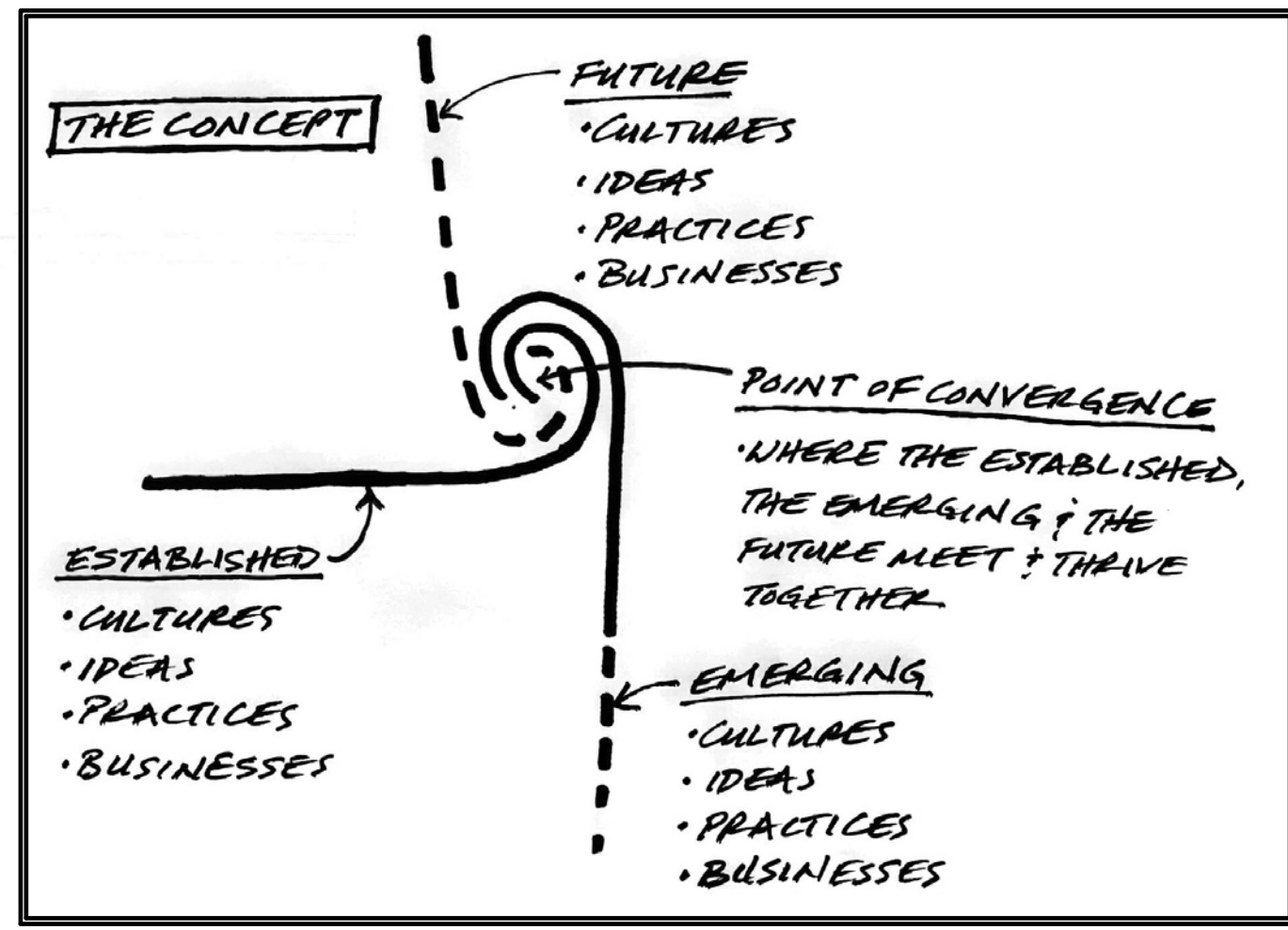


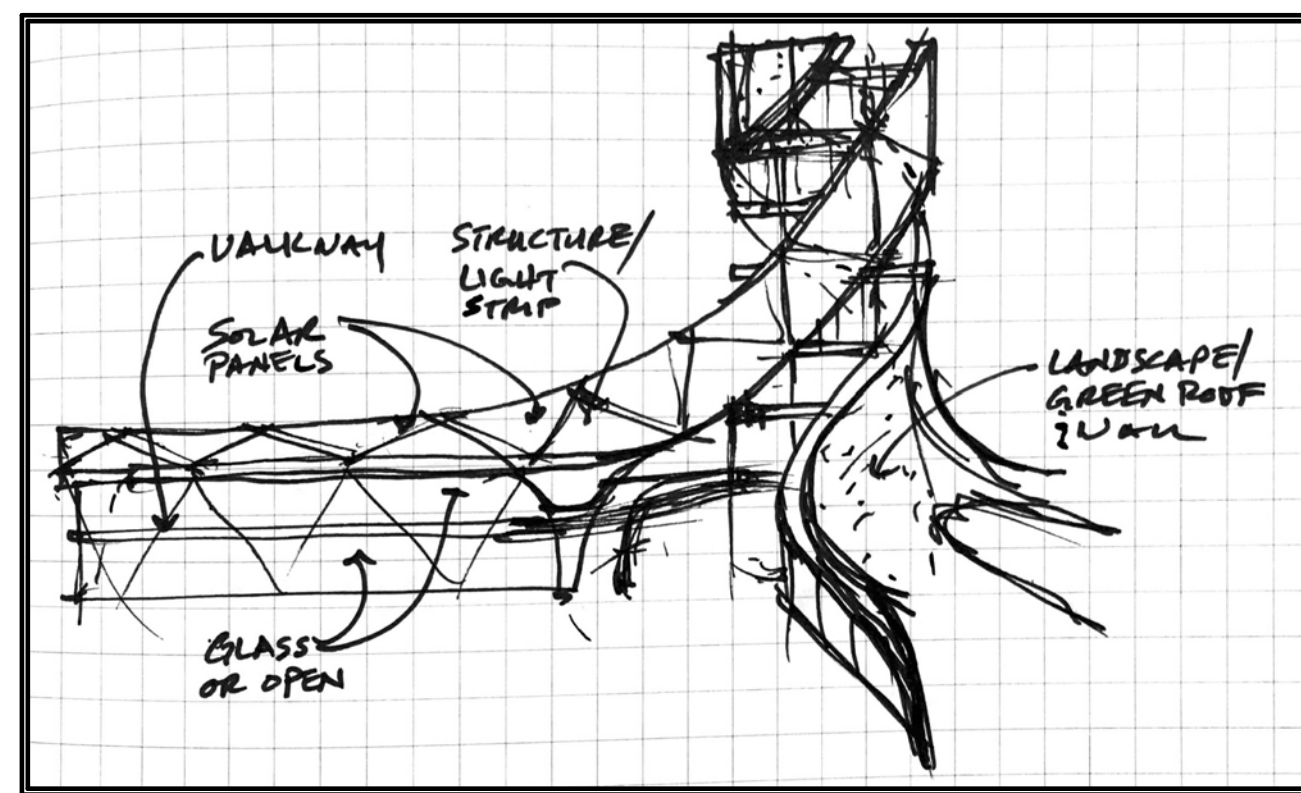
# CONVERGENCE POINT

## PROJECT SUMMARY

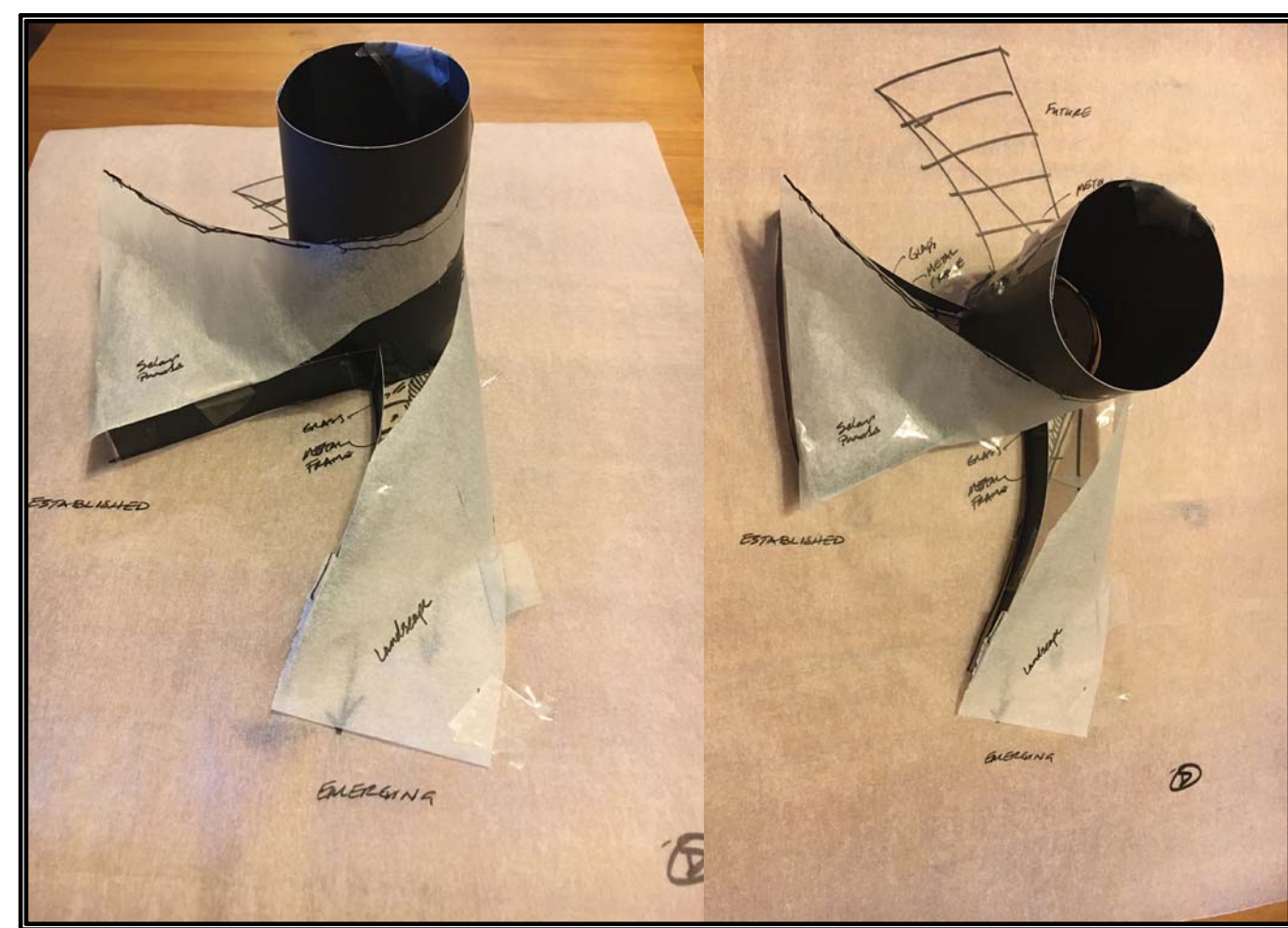
The ambition of this structure is to become a reflection of not only the diverse character of San Jose and the Bay Area at large, but of the way these characters converge and coexist. On a conceptual level, this project brings together the established, the emerging and the future cultures, ideas and practices that make this region a force on the world stage.



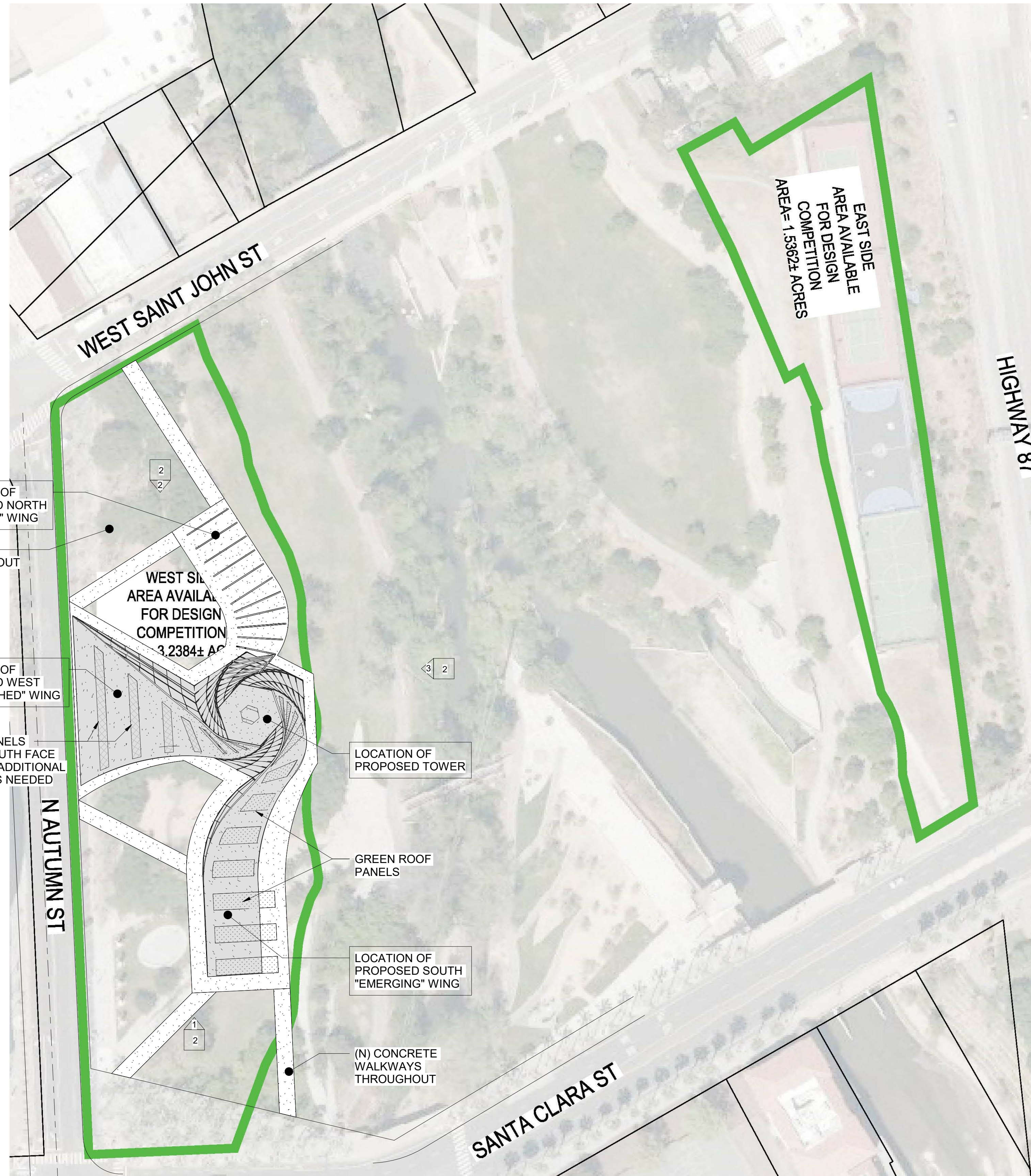
THE CONCEPT



CONCEPT SKETCH

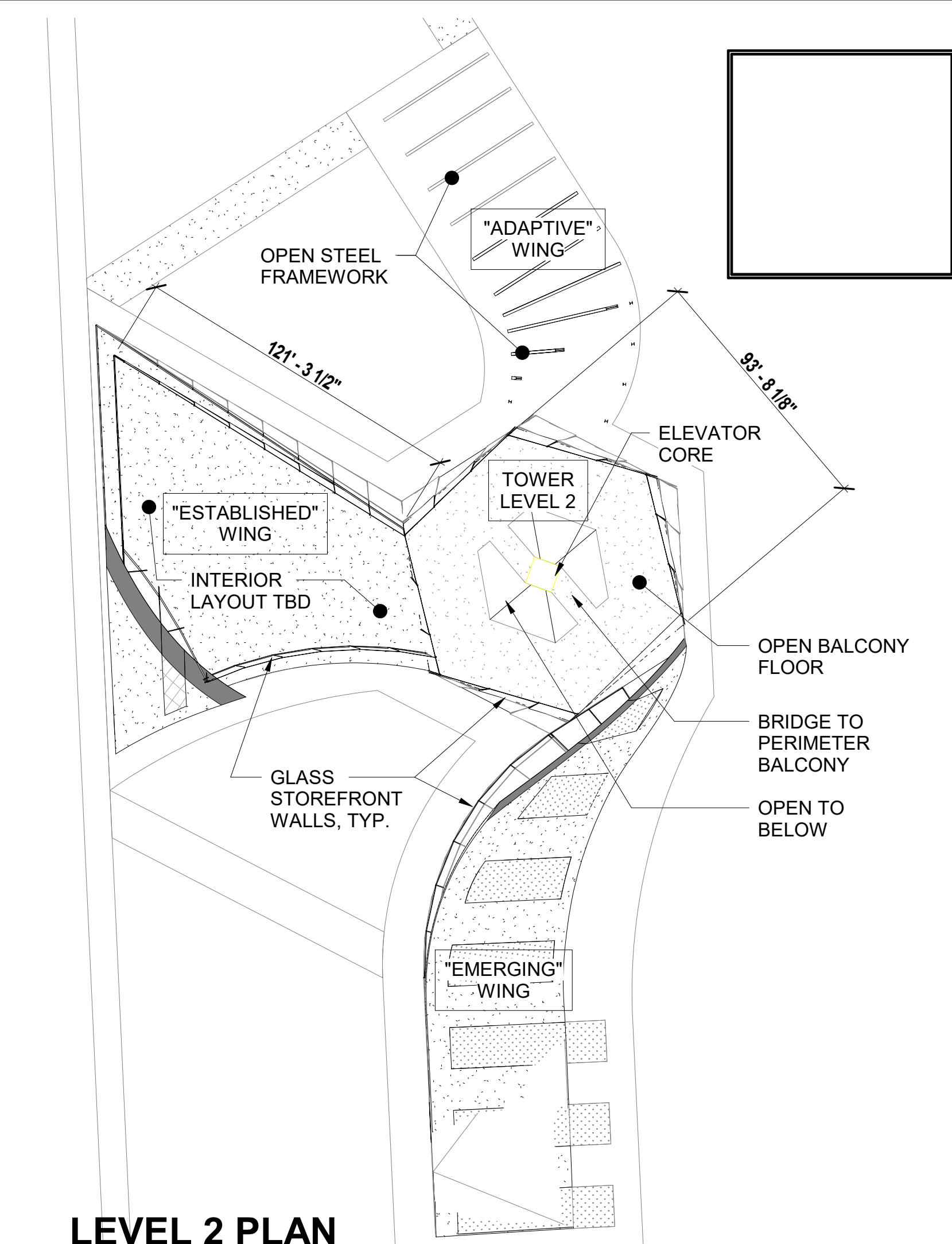
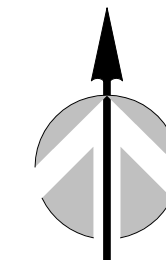


STUDY MODEL



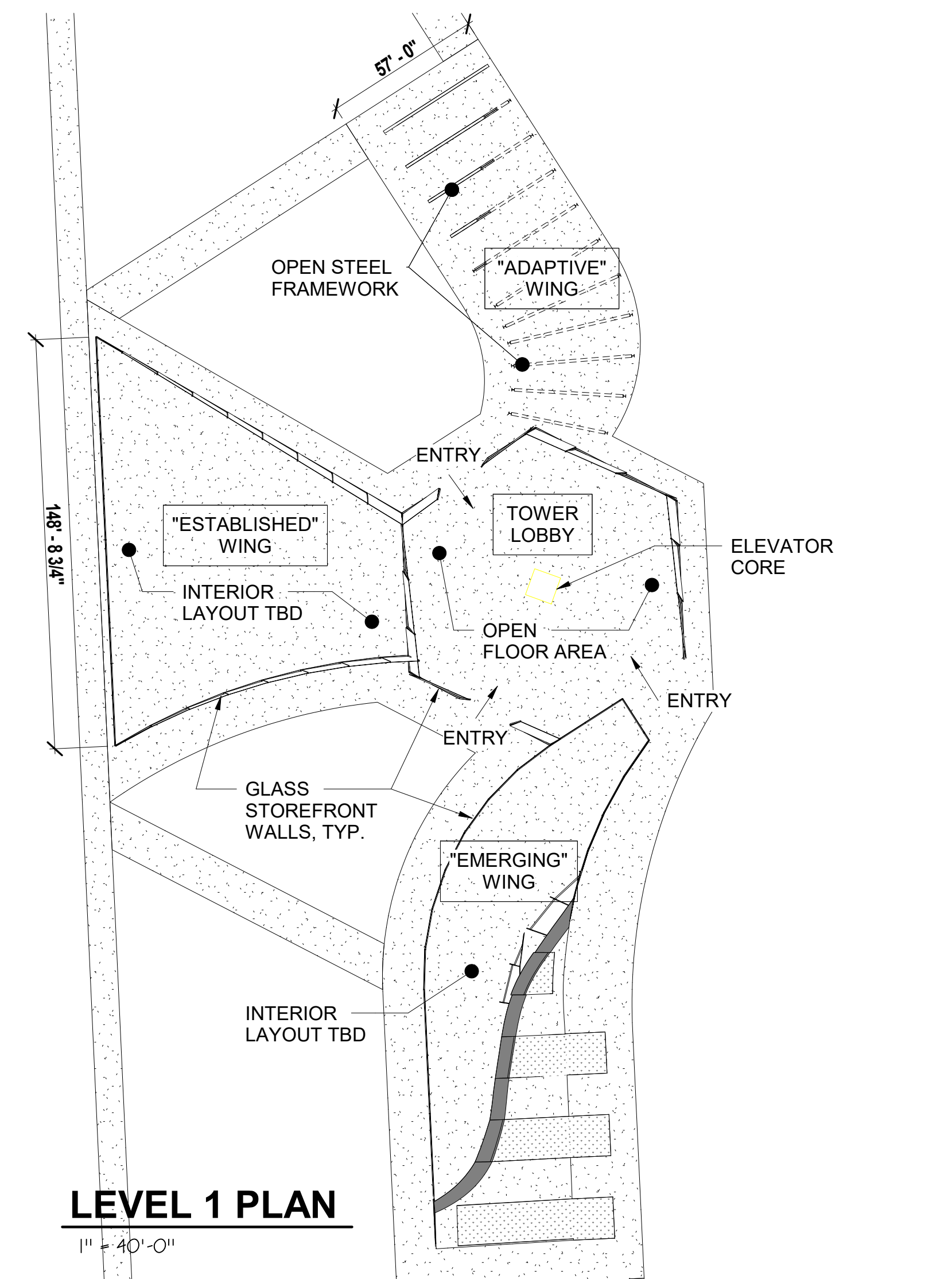
SITE PLAN

1" = 60'-0"



LEVEL 2 PLAN

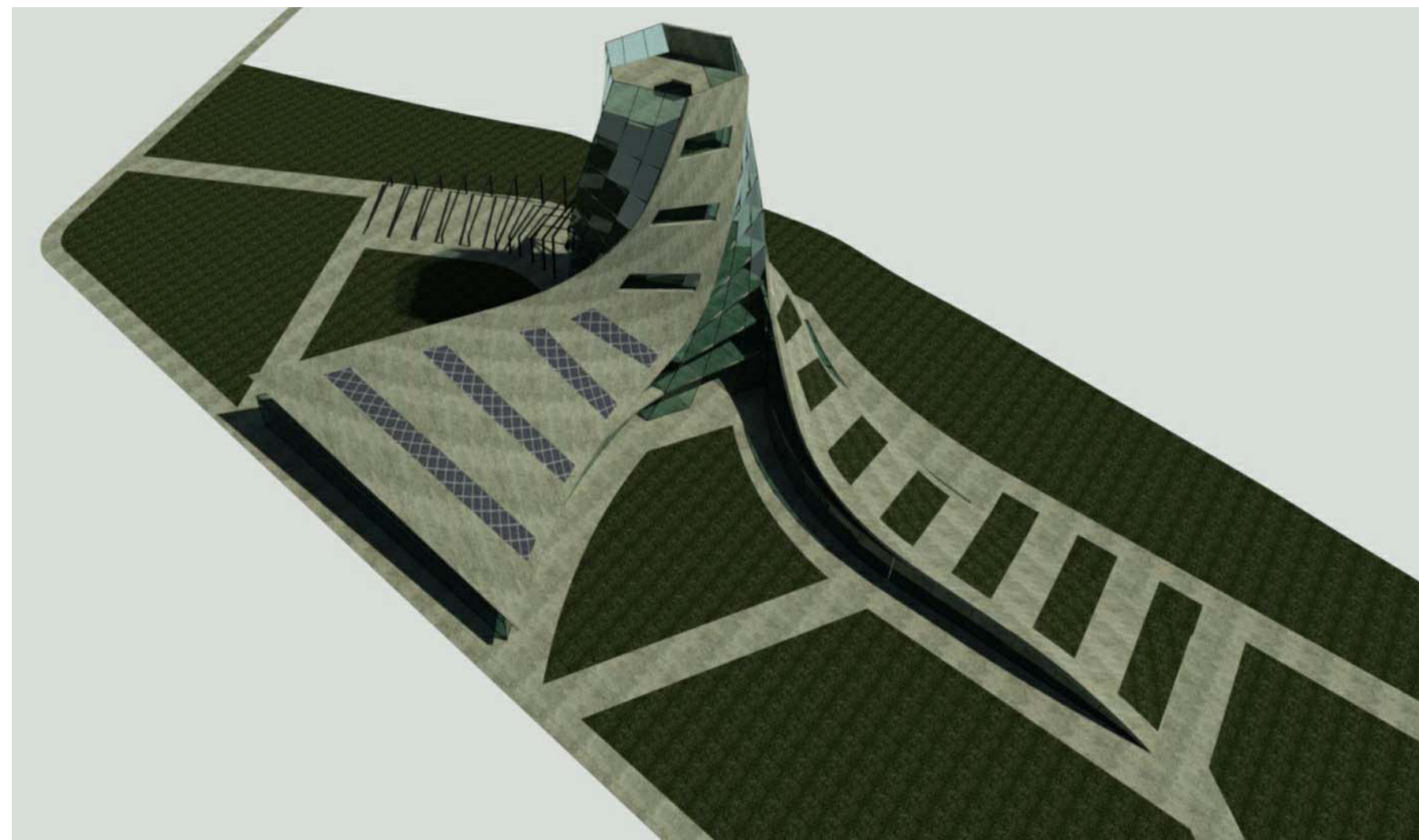
1" = 40'-0"



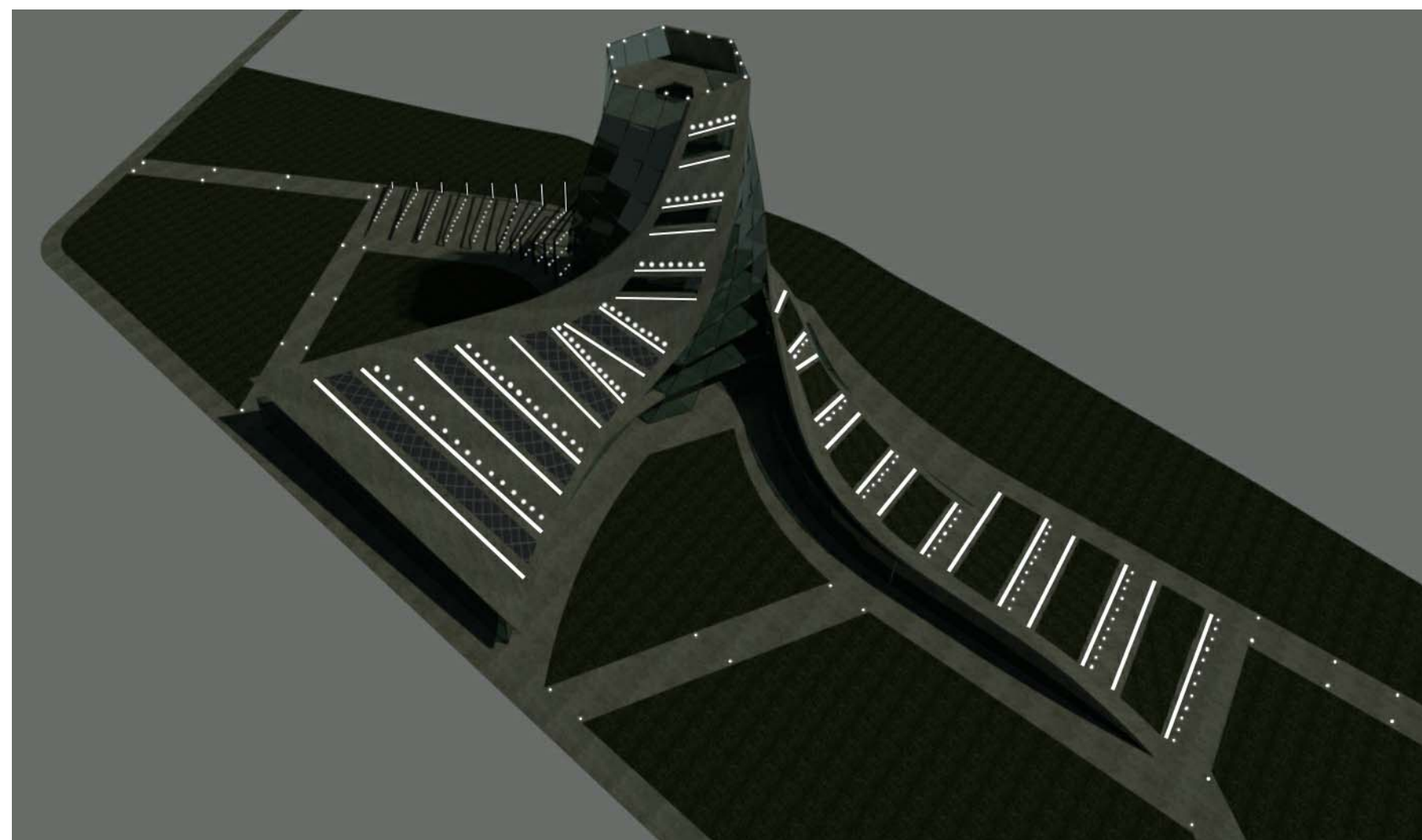
LEVEL 1 PLAN

1" = 40'-0"

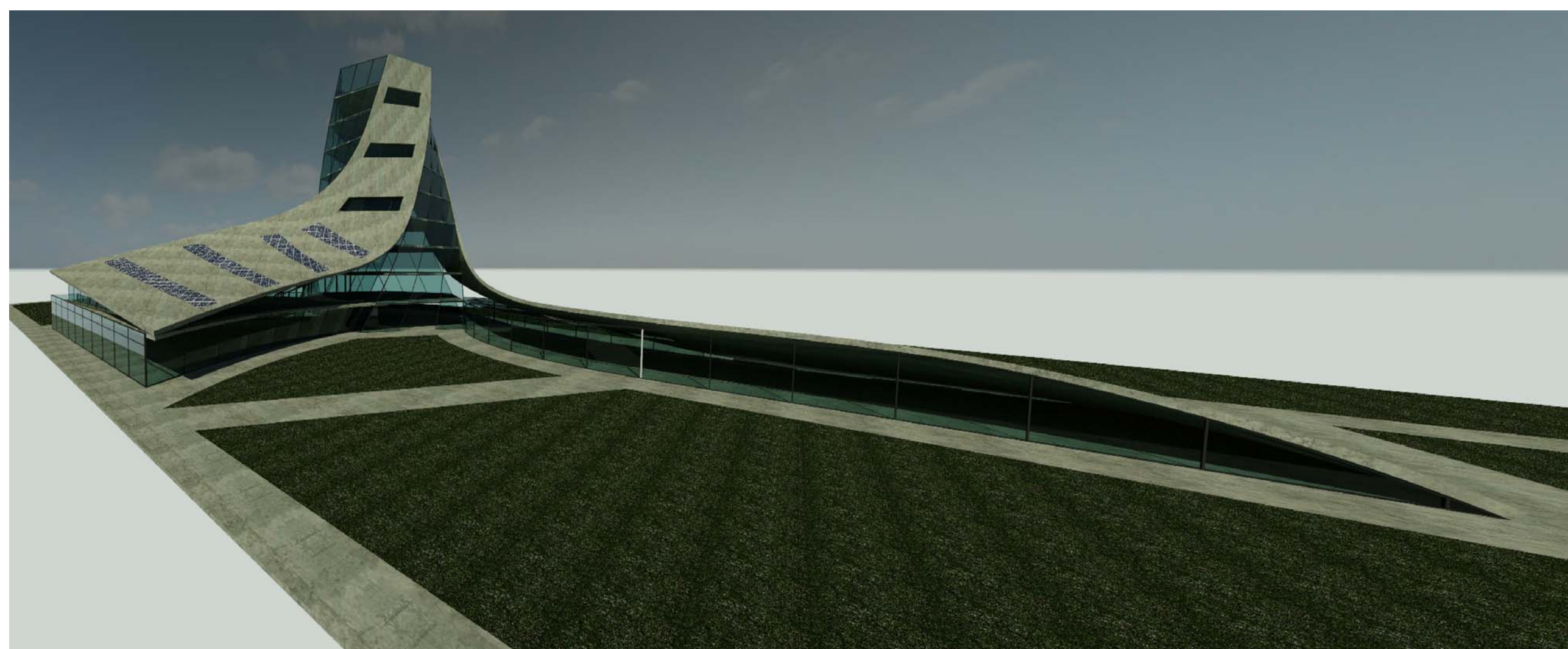




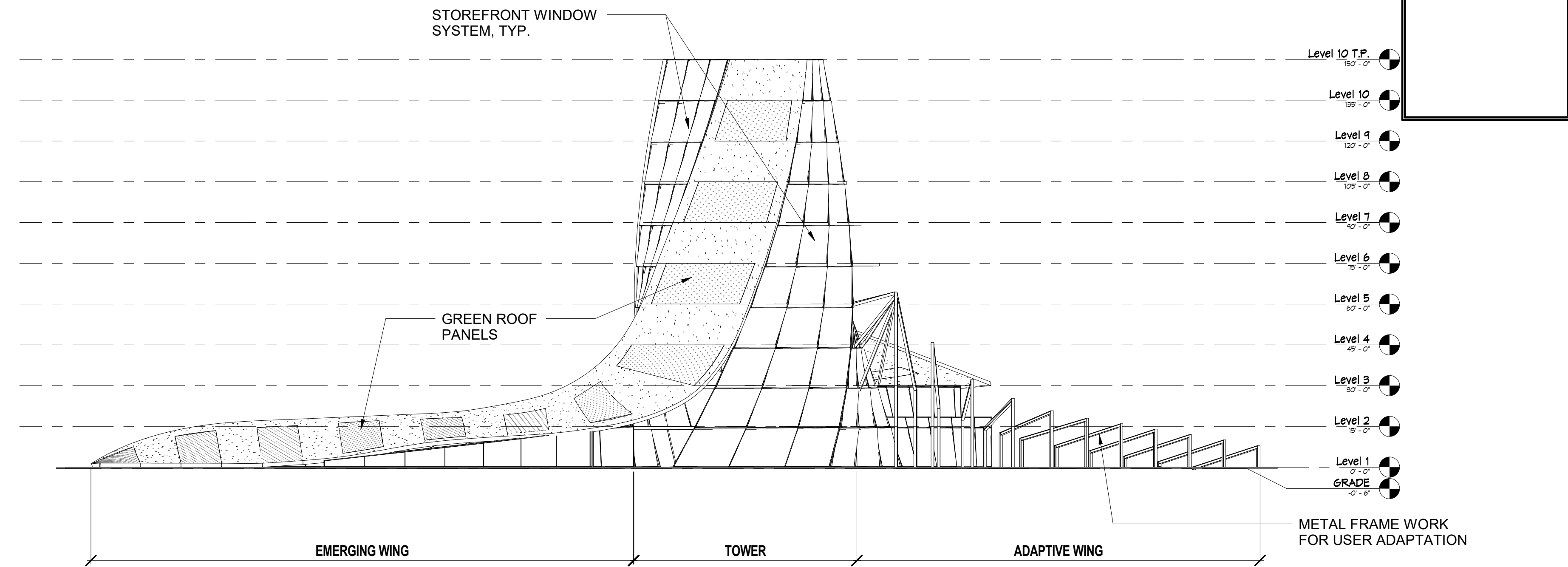
AERIAL DAY VIEW FROM  
SOUTHWEST CORNER



AERIAL NIGHT VIEW FROM  
SOUTHWEST CORNER  
LIGHTING INSTALLED ON ROOF SURFACES,  
METAL FRAME WORK AND WALKWAYS.  
LIGHTING CAN BE PROGRAMMED TO MOVE  
ALONG AND UP THE ROOF, AND  
SYNCHRONIZED WITH MUSIC OR RANDOMLY  
DISPLAYED

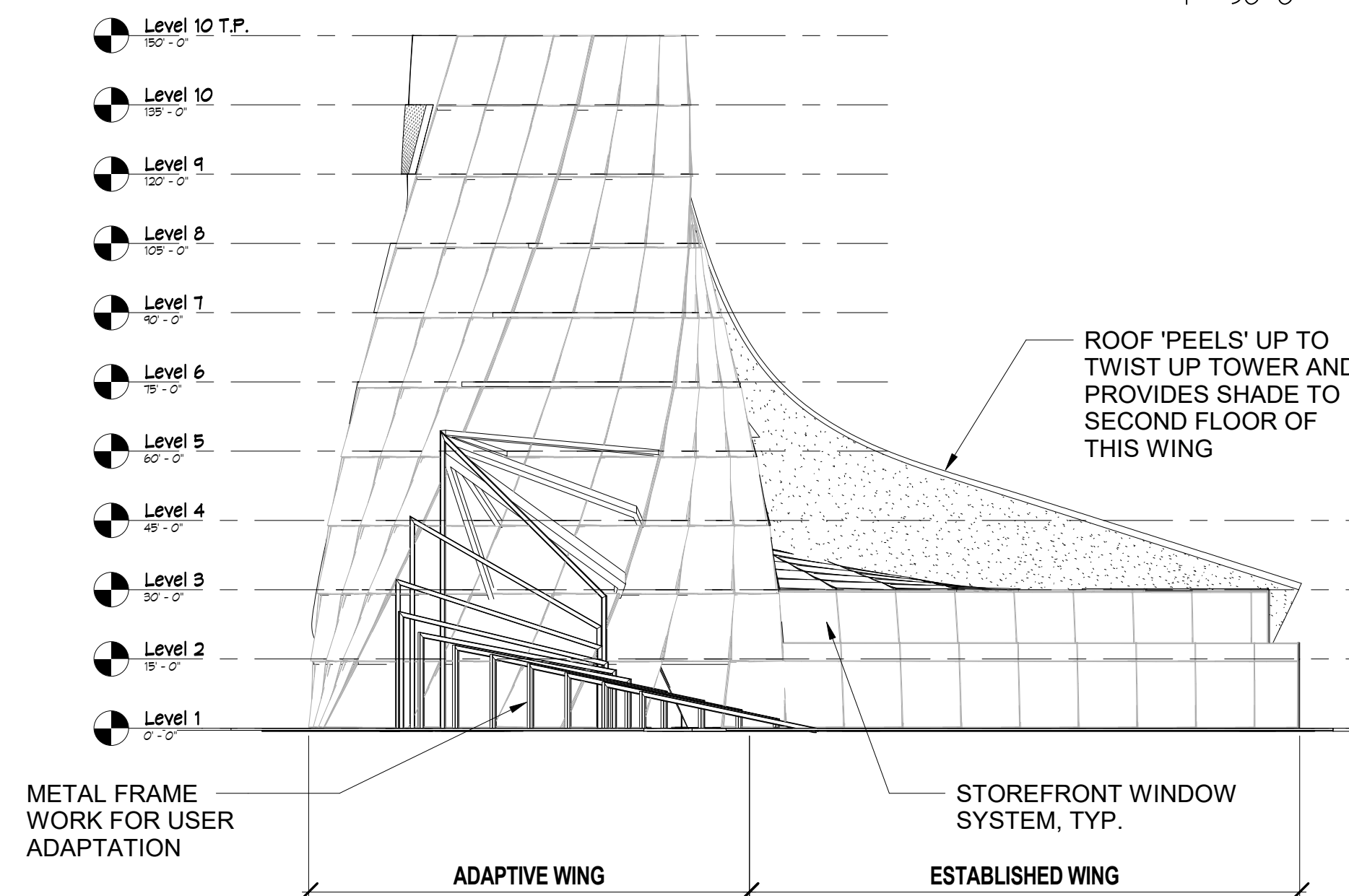


STREET VIEW FROM  
SOUTHWEST CORNER



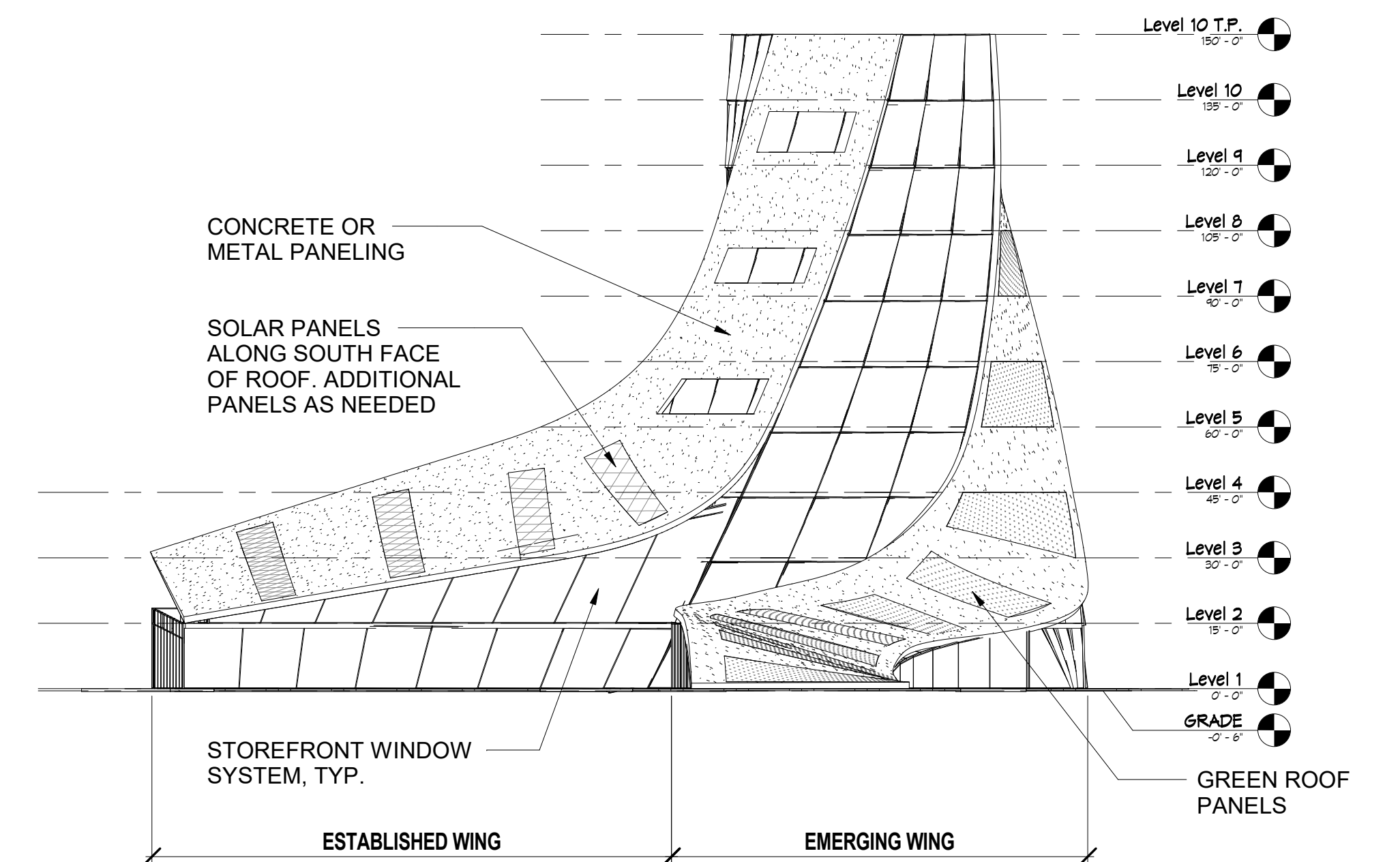
**PROPOSED EAST ELEVATION**

1" = 30'-0"



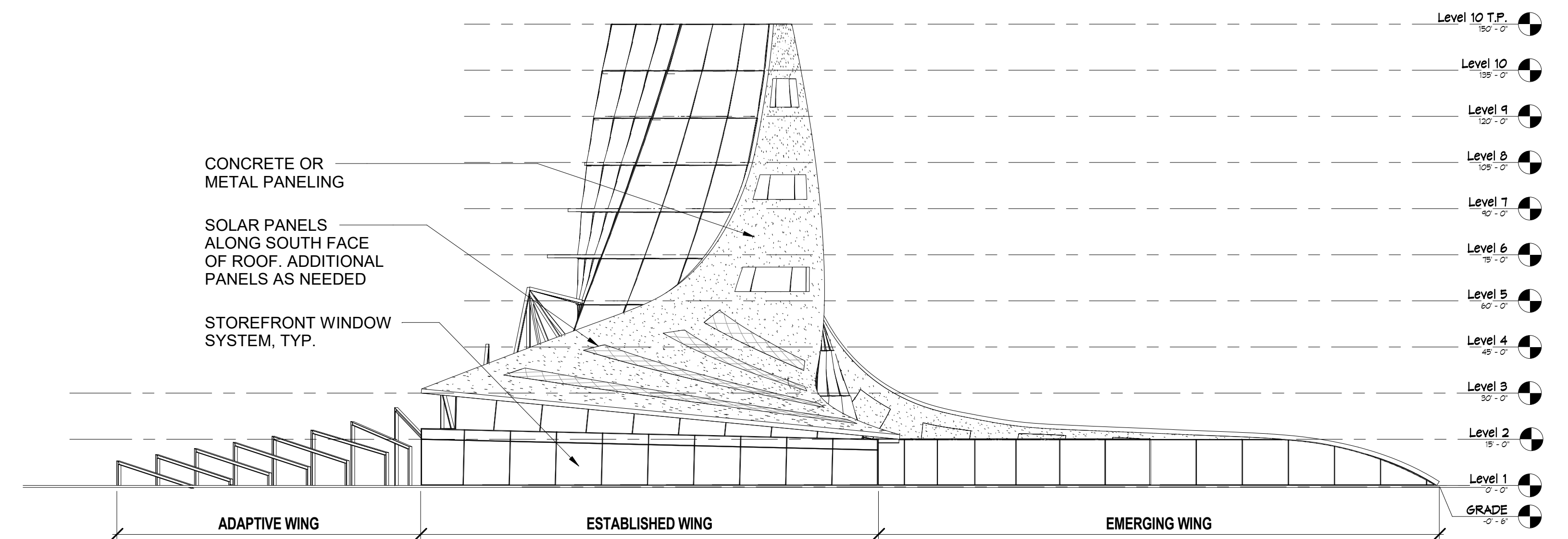
**PROPOSED NORTH ELEVATION**

1" = 30'-0"



**PROPOSED SOUTH ELEVATION**

1" = 30'-0"



**PROPOSED WEST ELEVATION**

1" = 30'-0"