

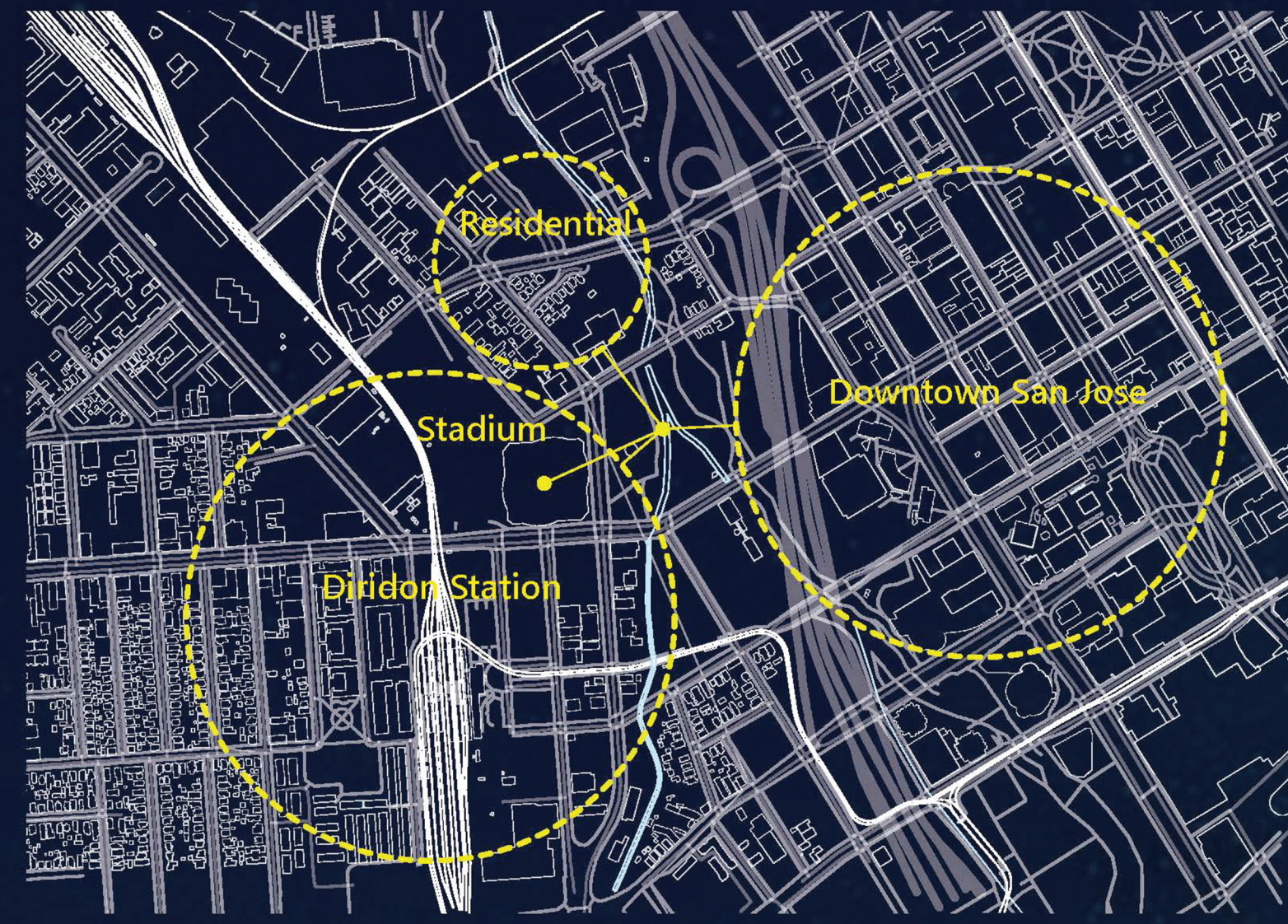
Background:

Tourism and neighborhood development would facing the challenge of finding a balance point between population density, economy and business service types, traffic flow load, need diversity, cultural focus point. How a landmark would give positive influence to serve local tourism with still keep a layer of lightness for the local neighborhood?

Concept:

Embedding with existing local programs and service the city in layers of functionality, which are mixable as well as splittable to meet different needs for the neighborhood and as a landmark.

Bring special viewpoints based on local topography features that allows people to experience different views in pleasure, during different time of period of a day for both locals and tourists.



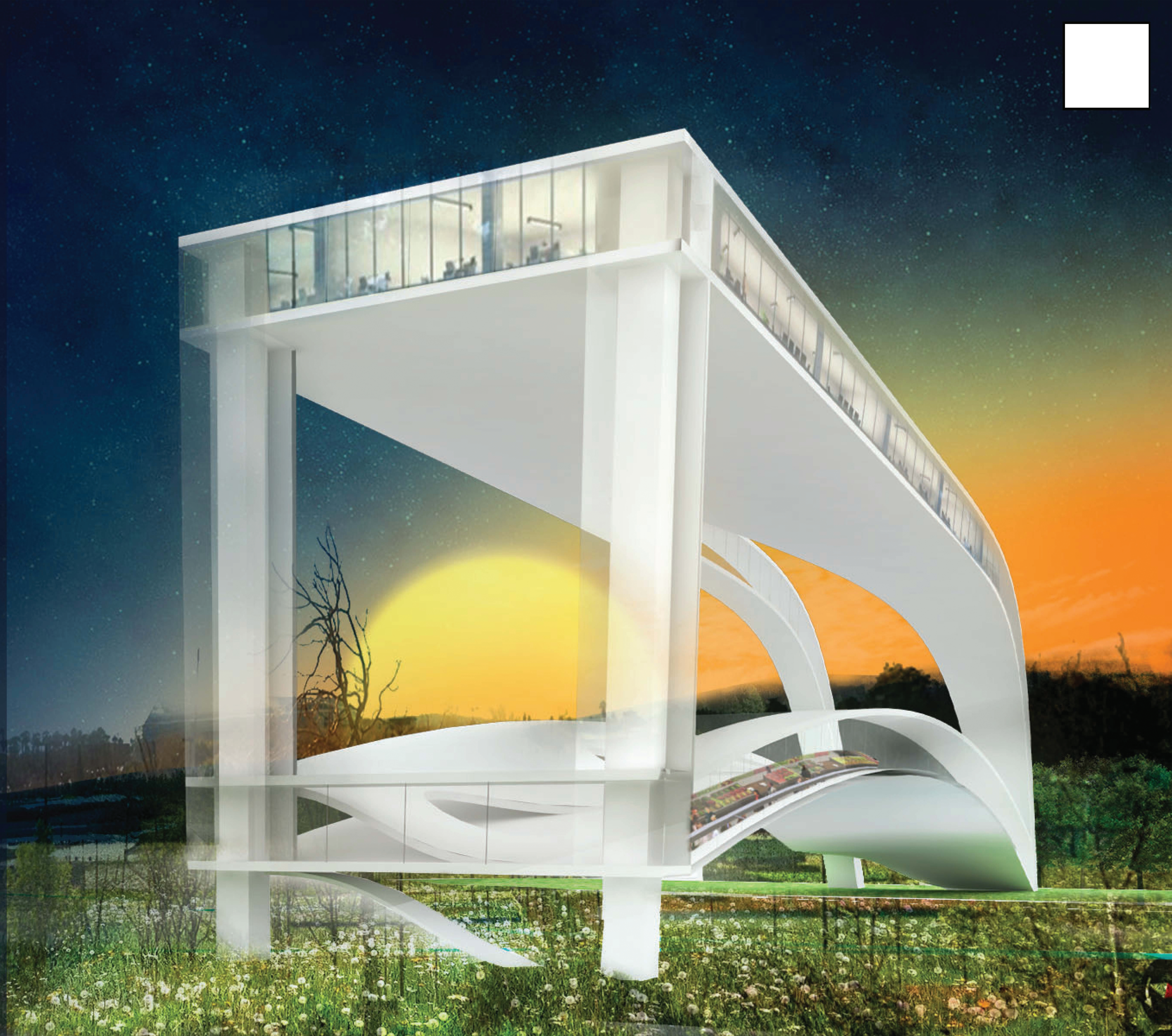
Strategy:

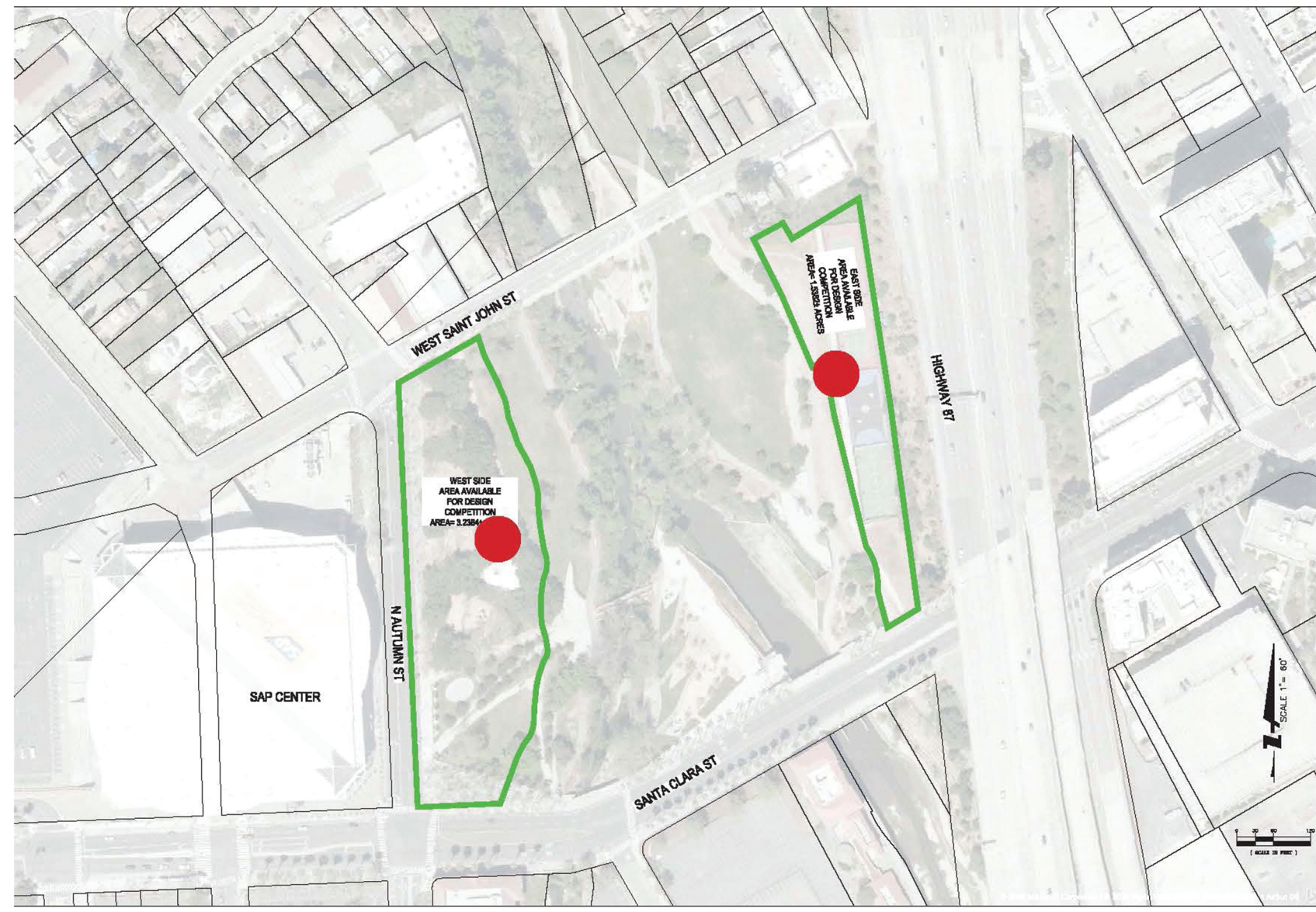
By research existing programs set up, finding complementary programs allows local culture and business can be embedded in, and can serve both tourism and local business.

Restaurants and local featured markets has the great potential to fill the gap and adding vitality between locals and tourists.

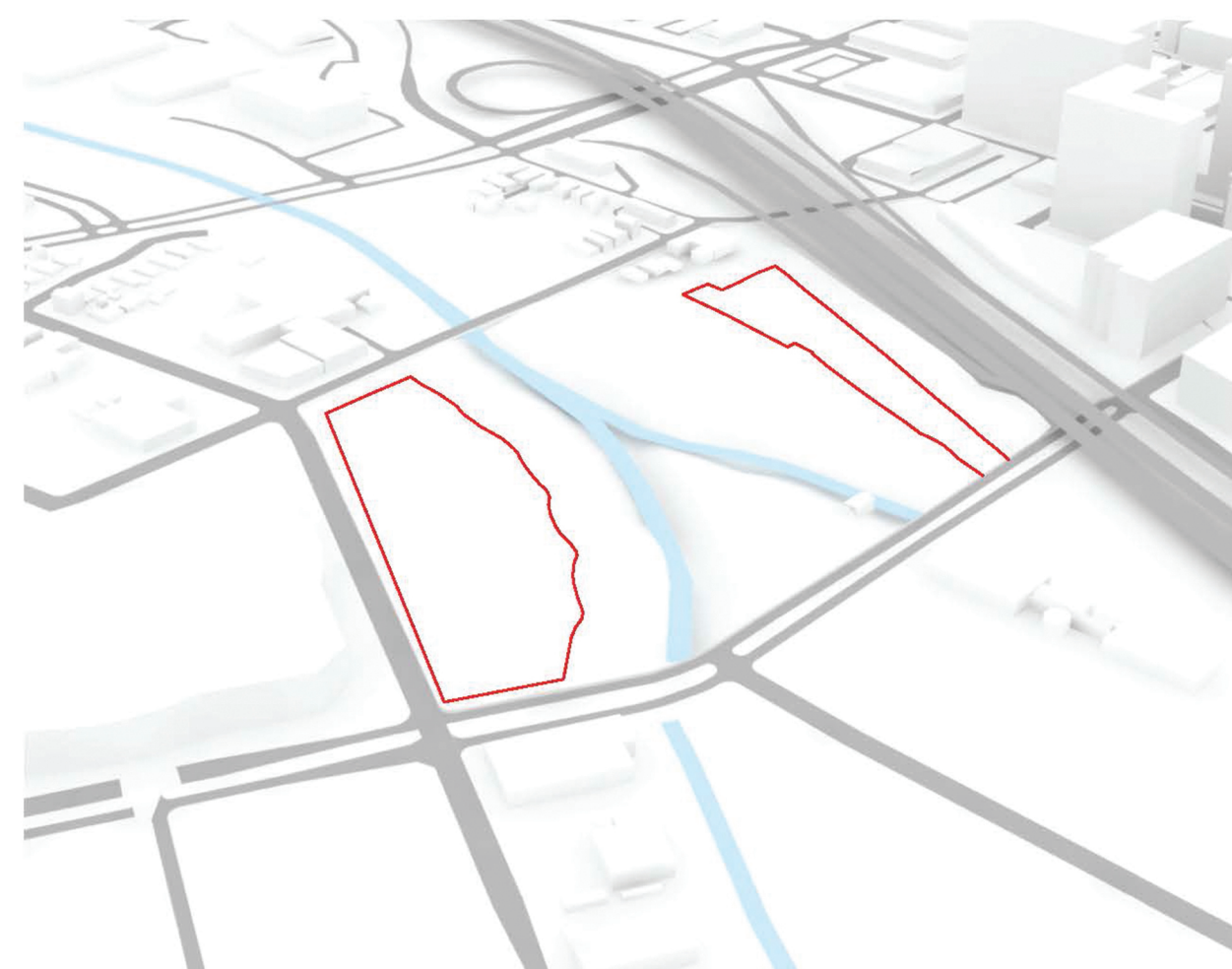
Being able to layer transitions float and layer time of period of a day within a project would make a landmark can serve both locals and tours based on needs in relative balance load constantly.

Existing site topography is relative flat, and split into west and east part by a "Y" shaped river. To curve up and bridge two split sites not only raise the connectivity and emphasize the park feature, but also bring-in view level and angle difference will allow people experience different view transition unintentionally. Taking sun angle changing during the day as an important consideration to layout the programs in order lower energy cost and raise view quality.





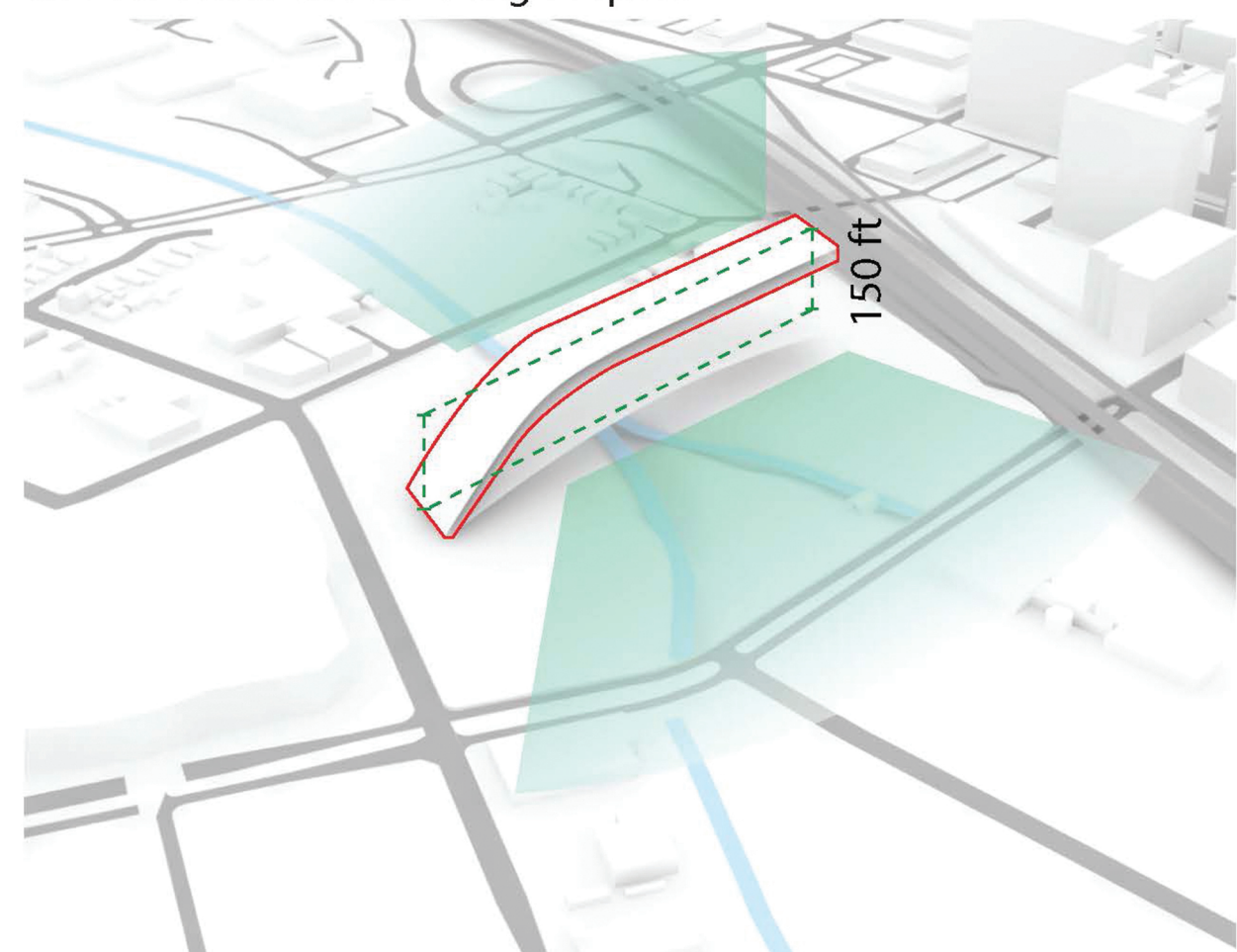
● ----- Support footage dropped on both west and east site



West & East Site



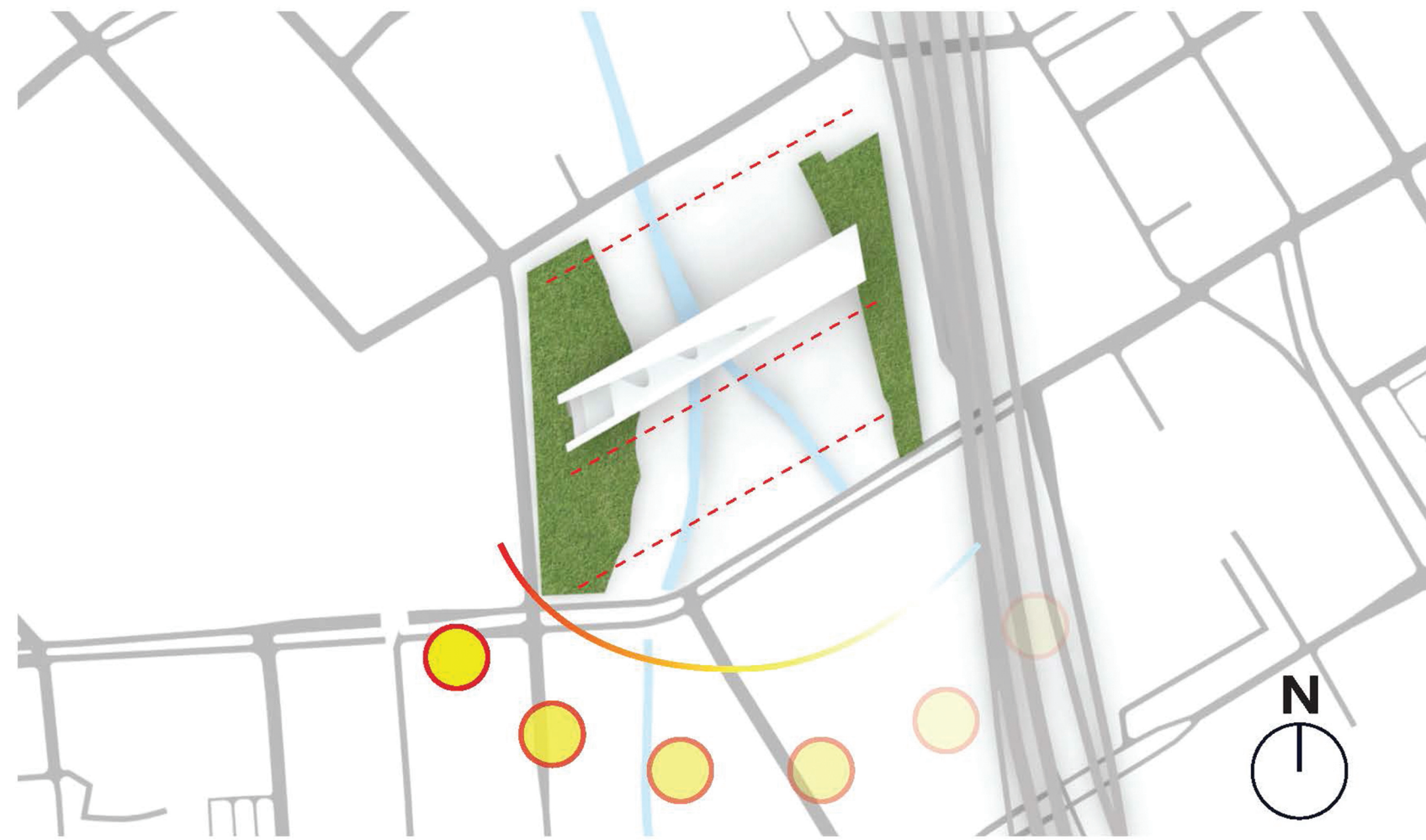
Layer One Connect Two Sites, South Side for Transition and North Side for Local Market Using Propose



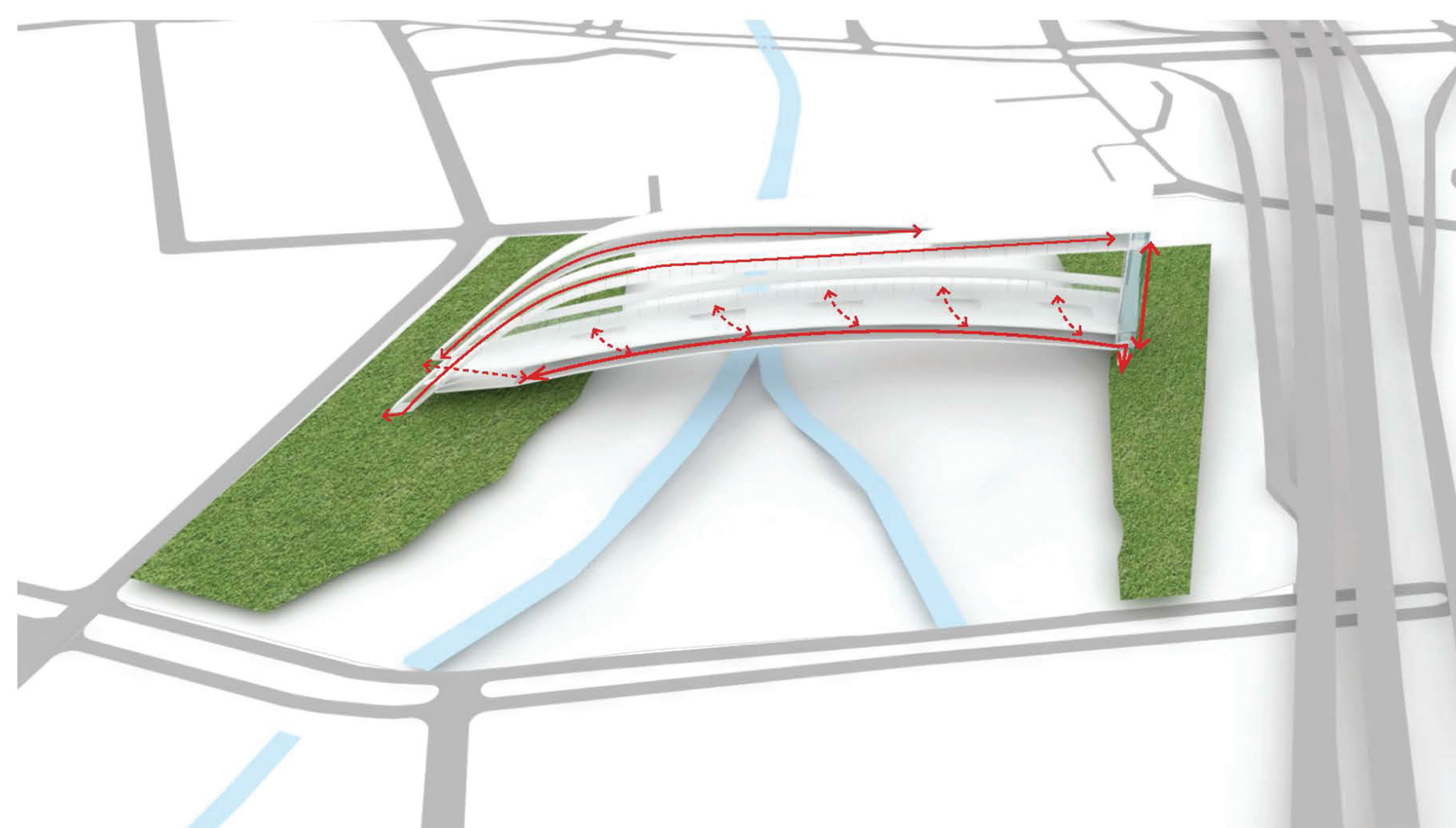
Upper Layer Brought Wider View Range for Restaurants



Two Glass Elevator Cores Exposed to Major Highway



Building Orientation Lower West Solar Exposure



Layers Transitions for Different Using Propose to Serve Both Locals and Tours

