

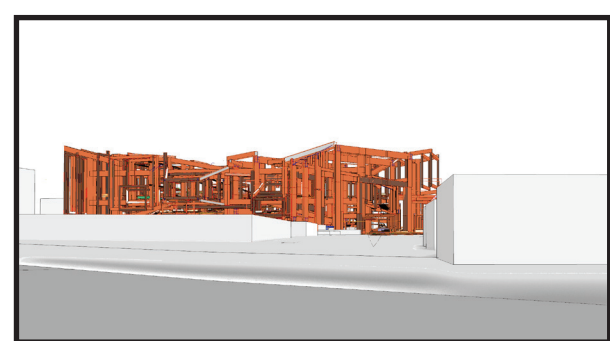
# NETWORKED PORTALS

Inspired by the outsize technological ambition of the original San Jose Light Tower's goal of comprehensively illuminating its entire surrounding city, this design constructs symbolic portals to extend off-site view corridors found in the project's urban surroundings. The superimposed view corridors juxtapose a range of different scales of space onto the site in order to create moments of contrast where collisions between spaces of both grand and human-oriented scales could evoke a sublime sense of monumentality. The complex visual results generated from the collisions of such intersecting portals, in which a view through one procession of visual frames might provide glimpses of the edges of other intersecting viewing portals, evokes the omniscient interconnectedness of another Silicon Valley achievement: that of the Internet itself.

Right: Conceptual diagram illustrating view corridors which the design intervention engages with.



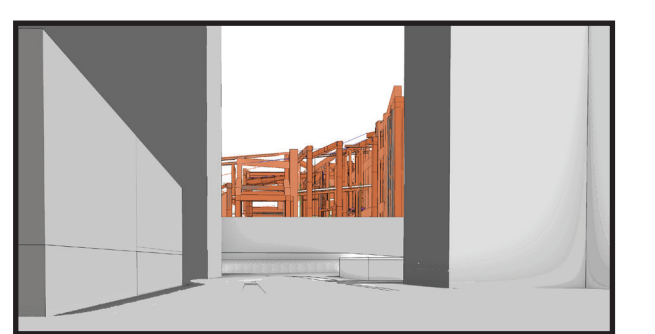
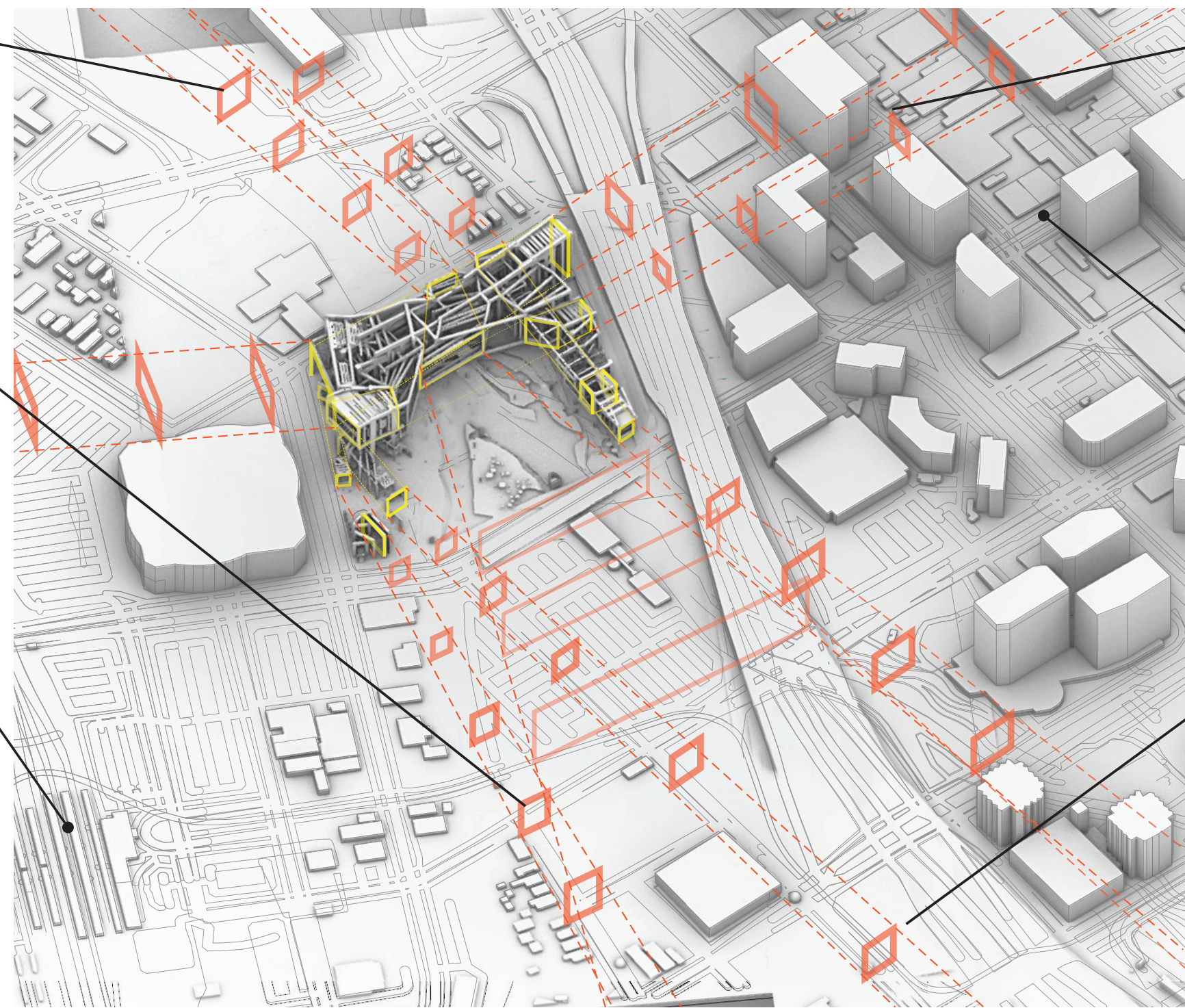
View of the design (highlighted in orange) from the Guadalupe River Trail.



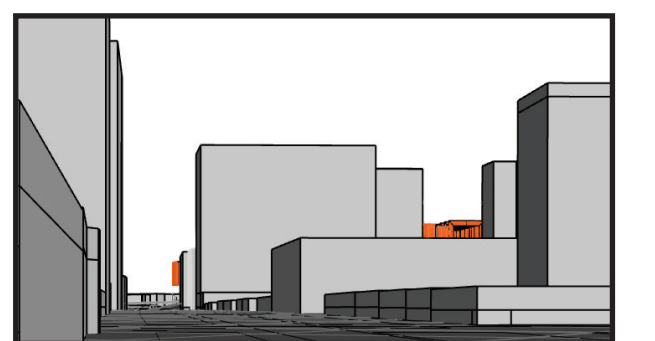
Gifford Ave looking north.



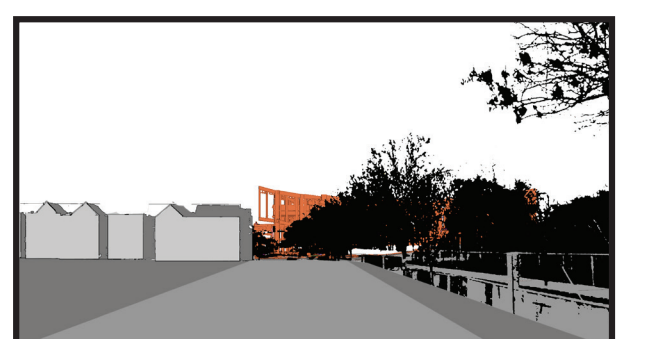
View from the area of the planned new Diridon Station.



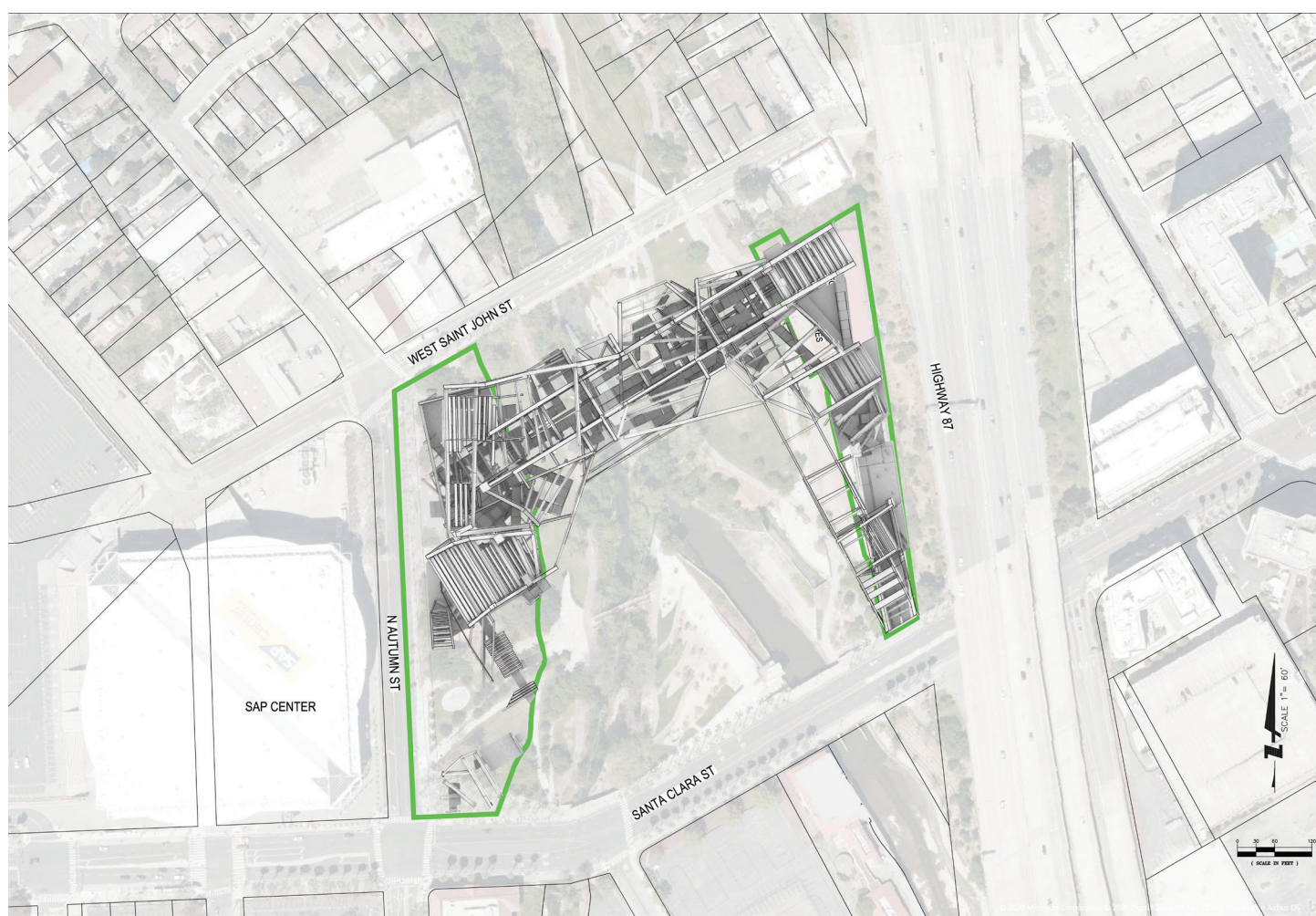
View from downtown, at intersection of Carlysle St and Notre Dame Ave.



Distant view from downtown on W Santa Clara St.



Delmas Ave looking north.



Above: Site plan.

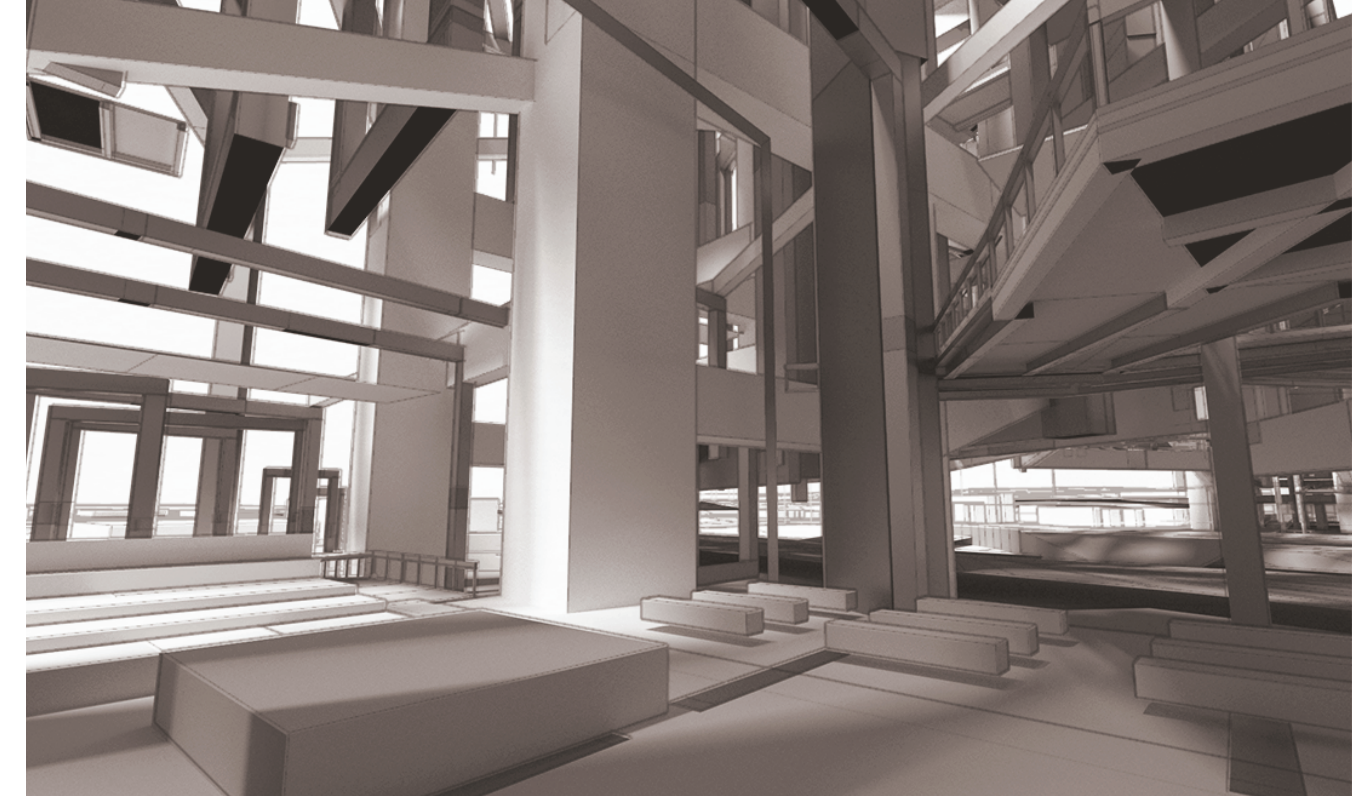
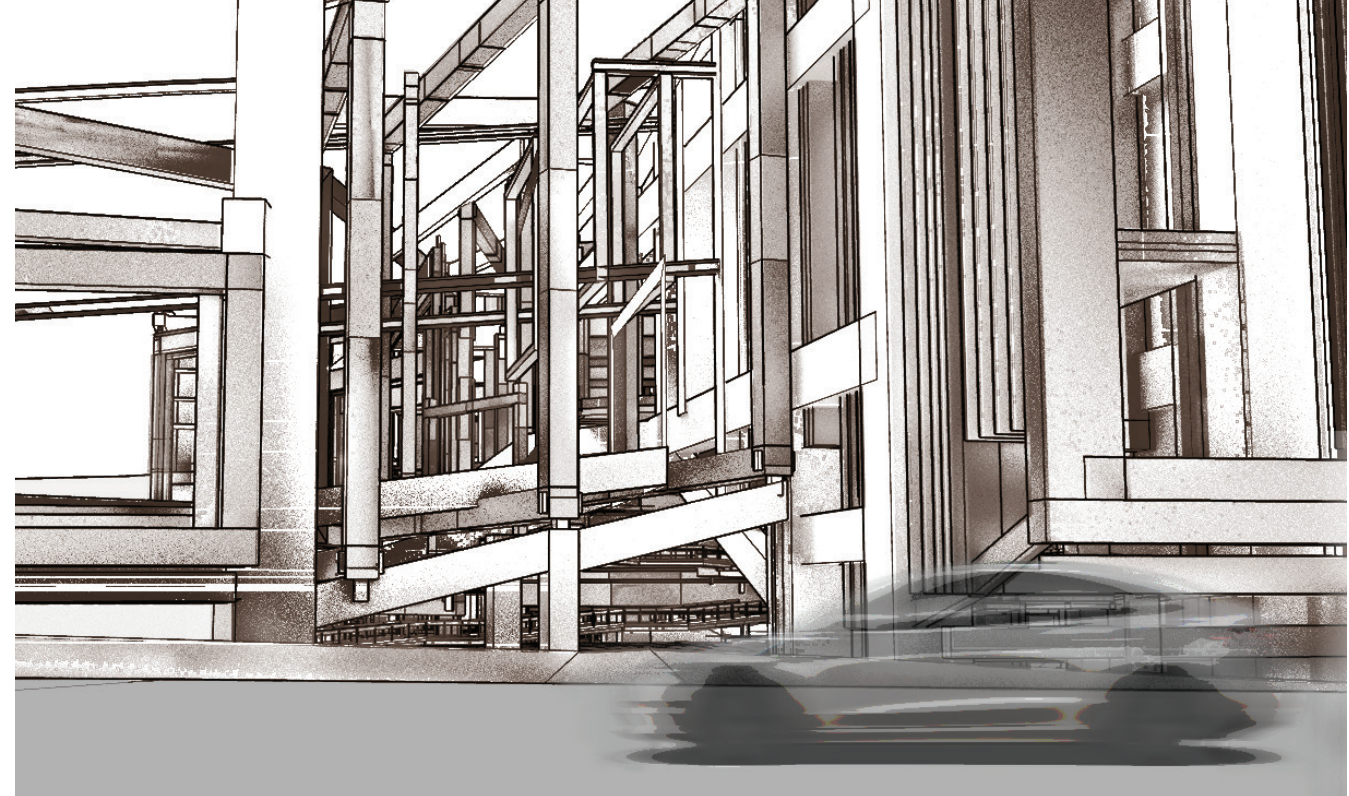
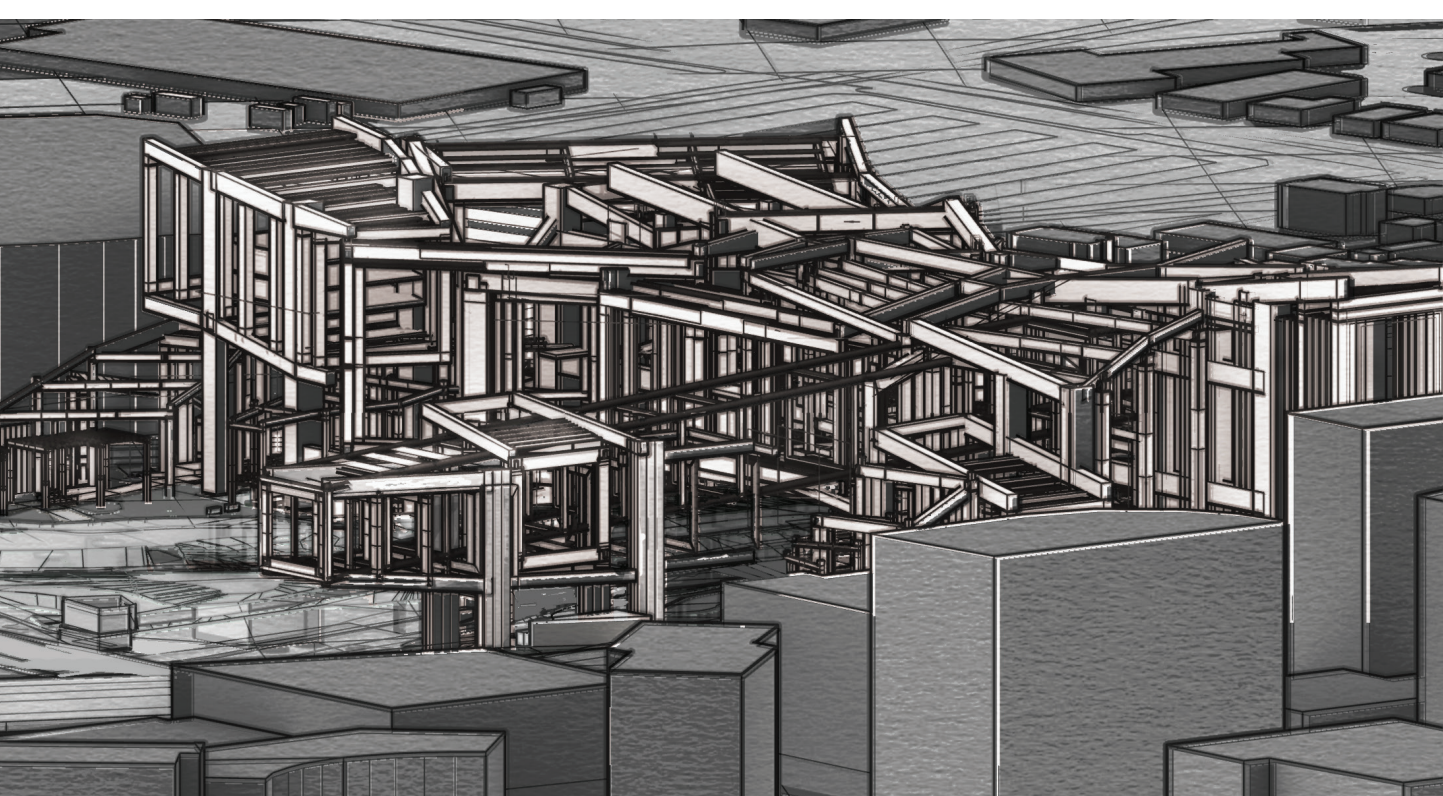
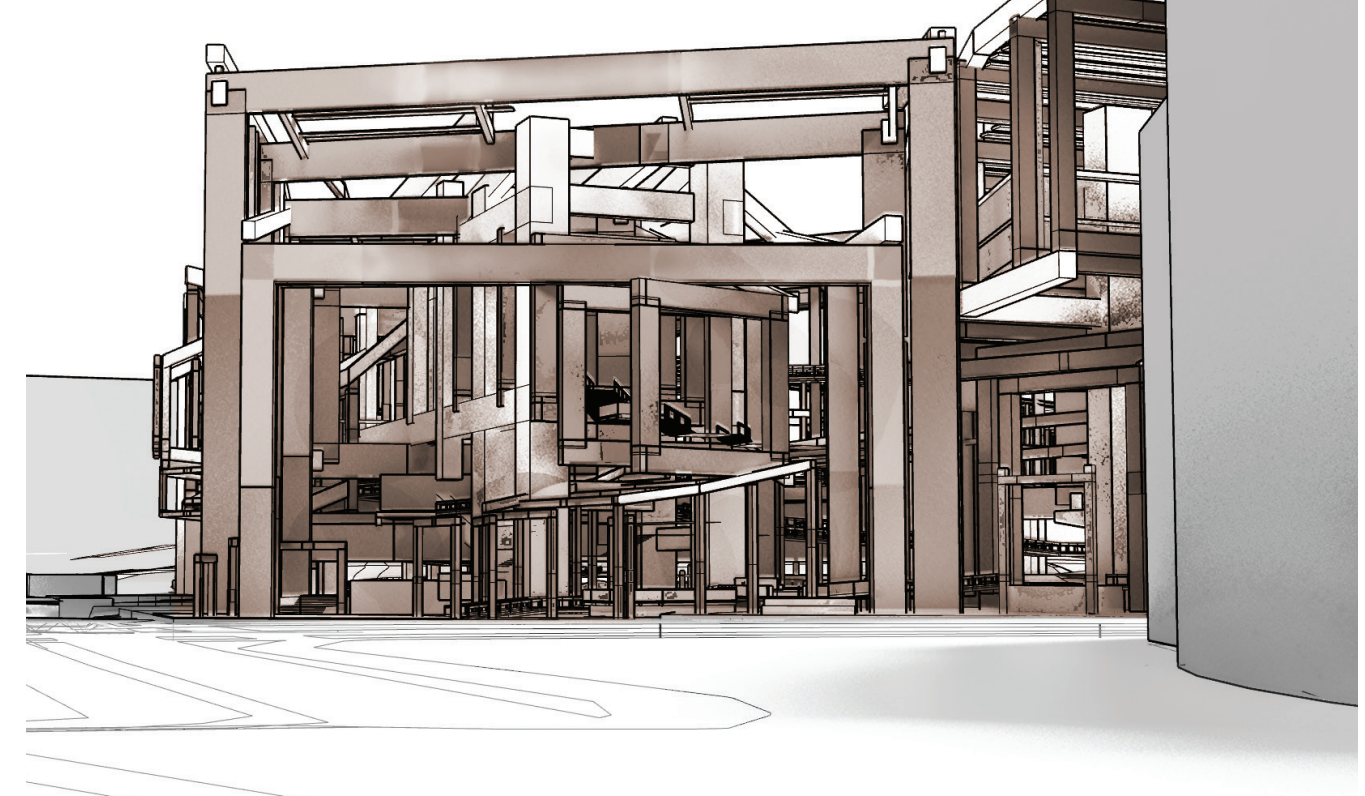
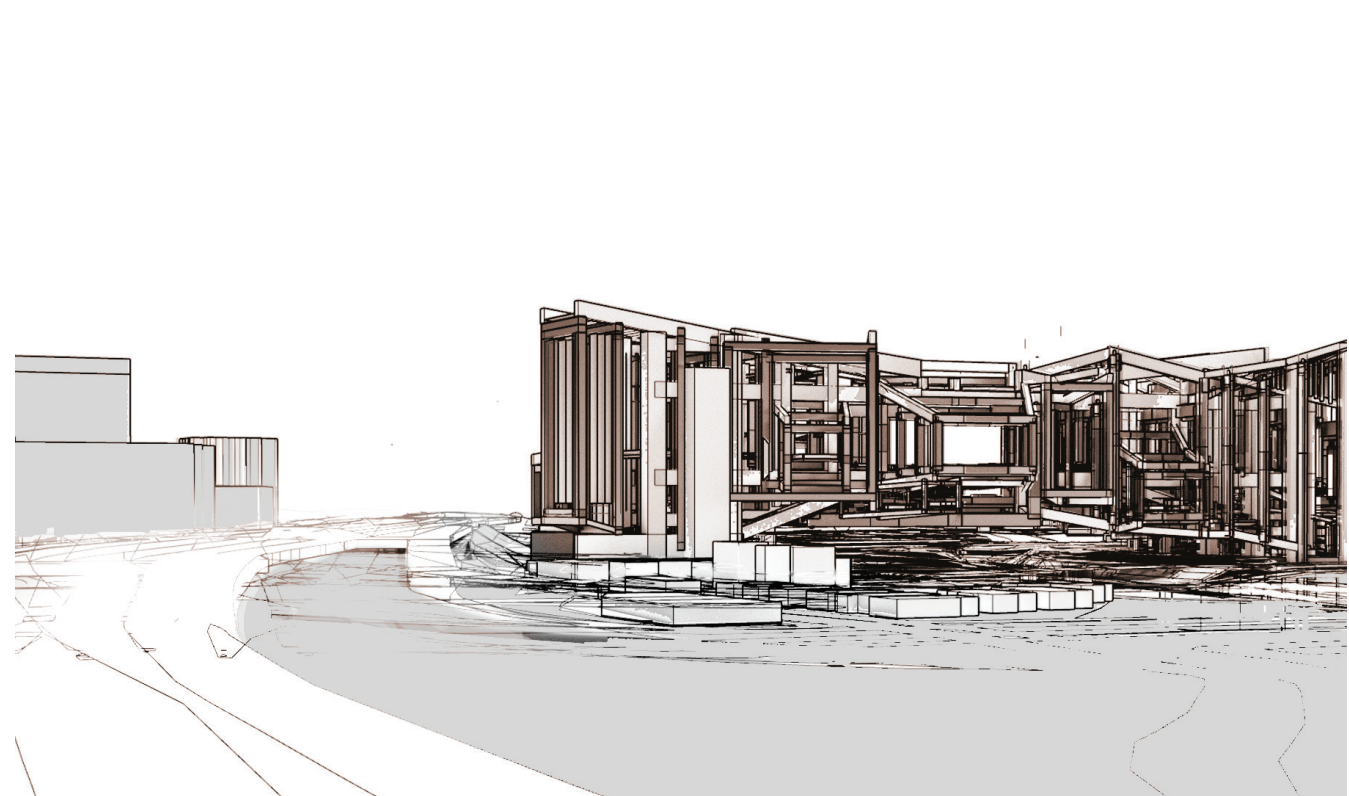
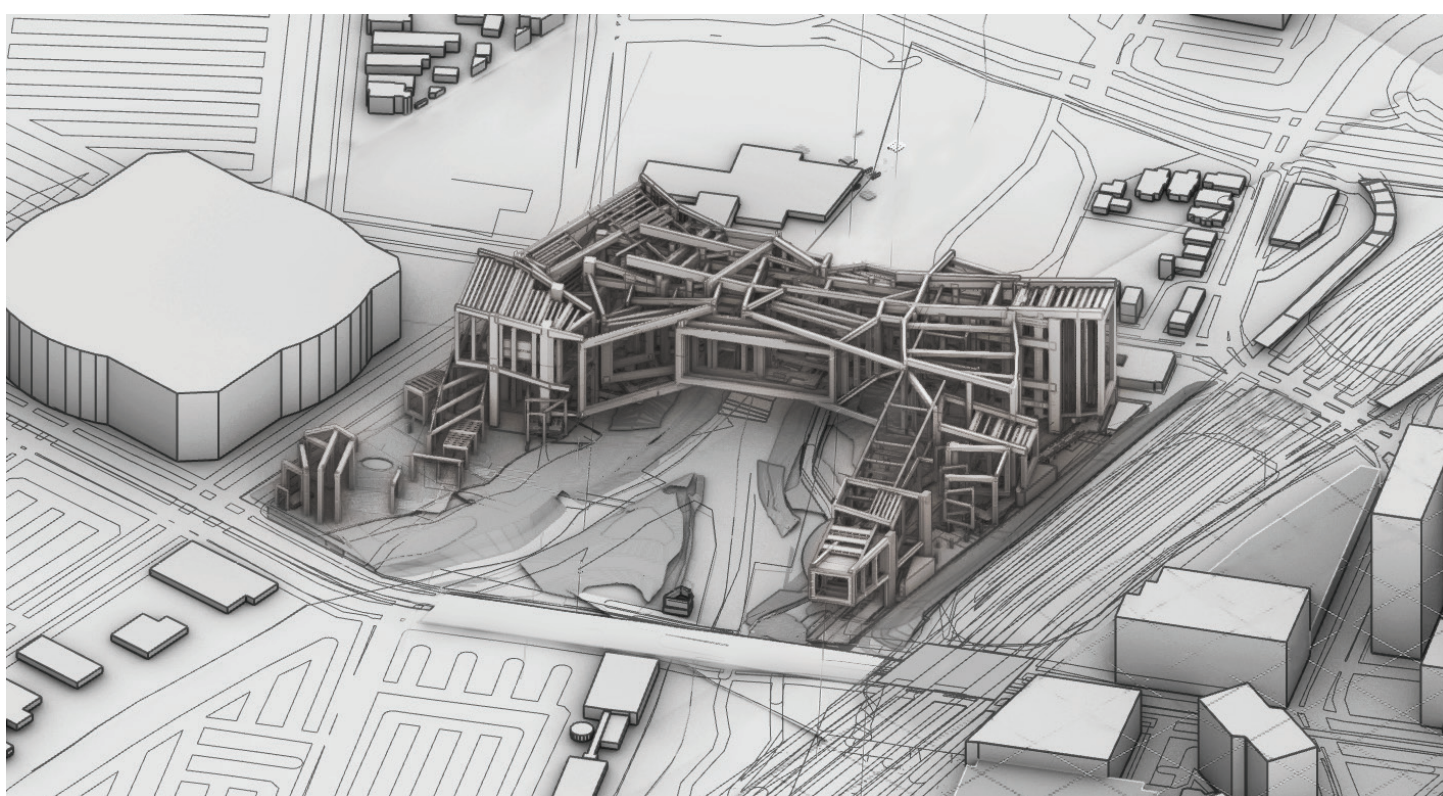


Plan: Ground level.

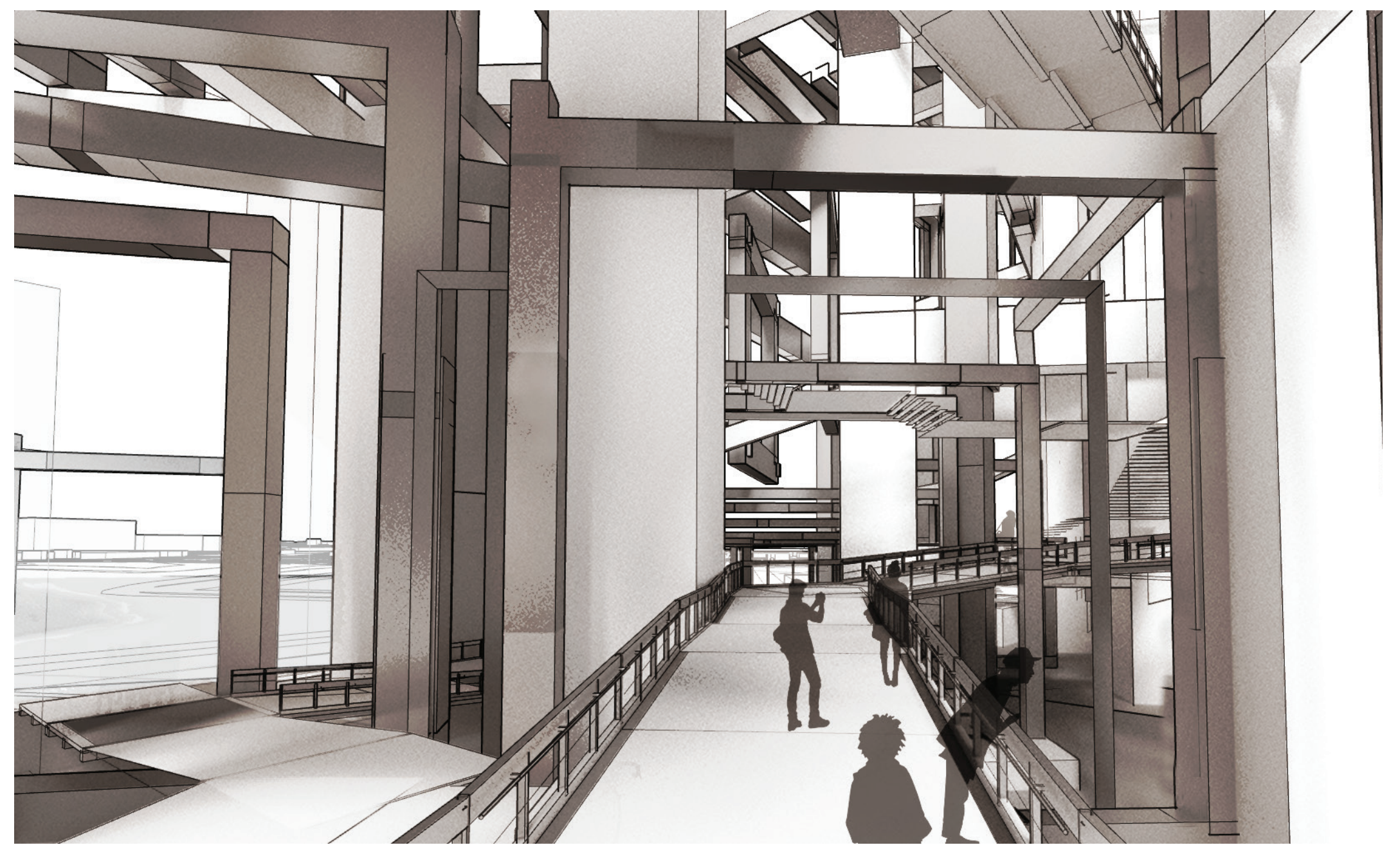
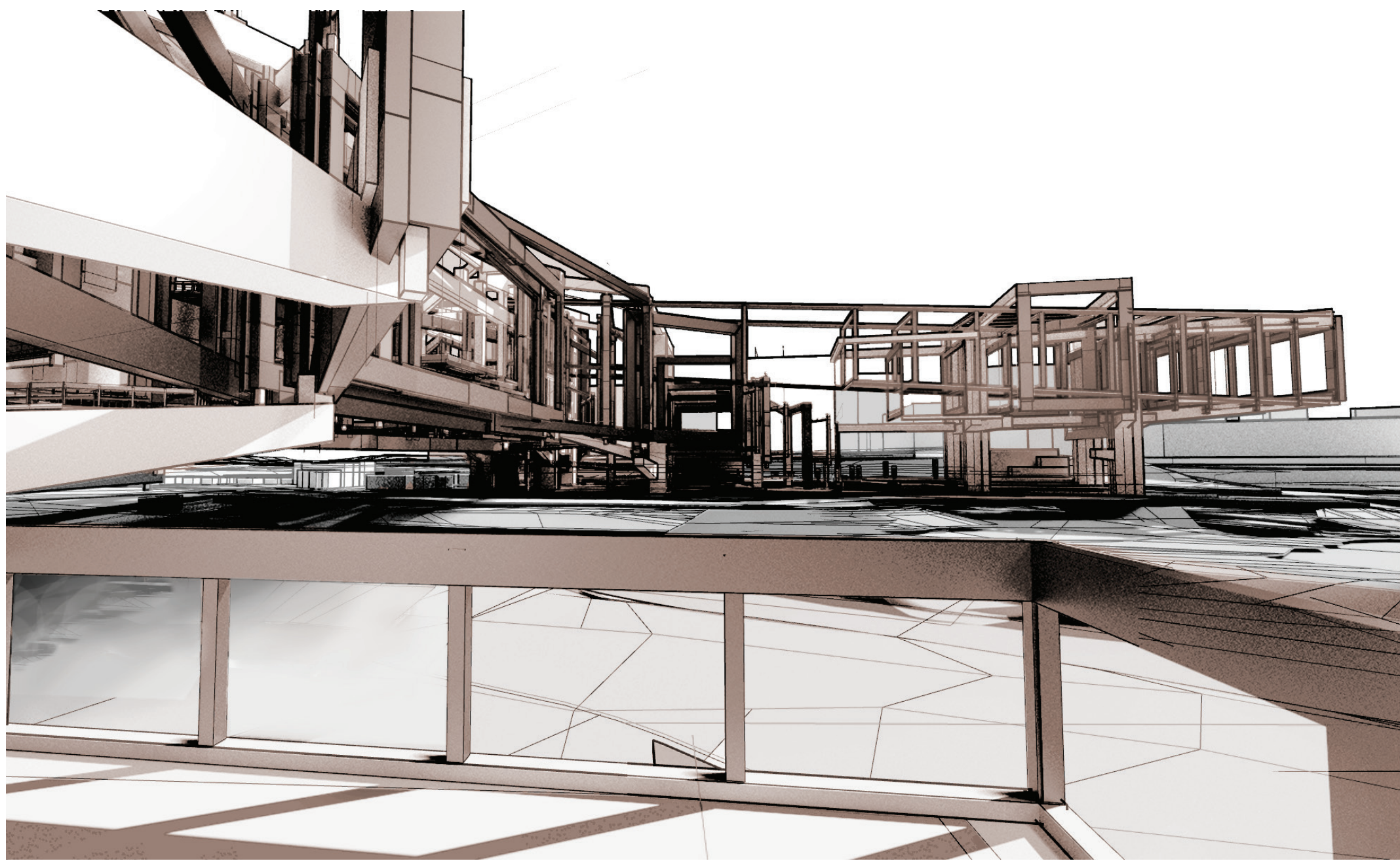
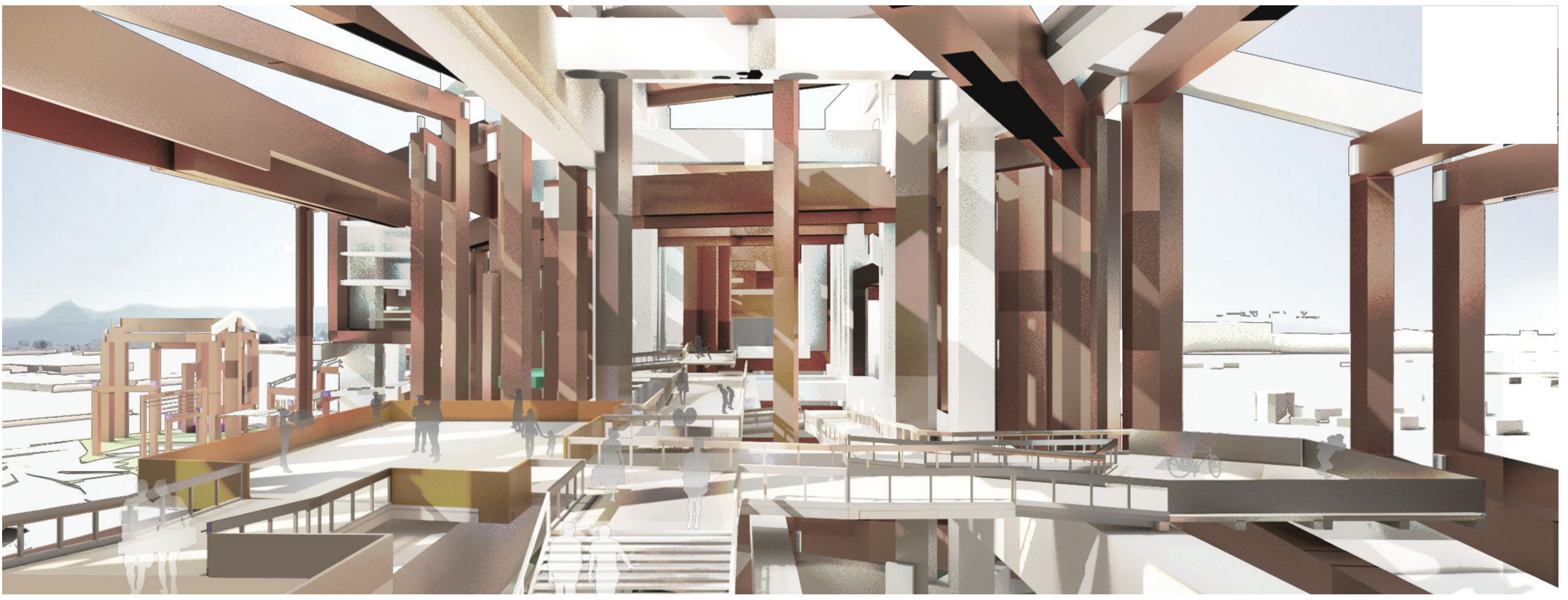


Plan: bridge level.

Below: Design renderings. Photo footage via Google Street view.





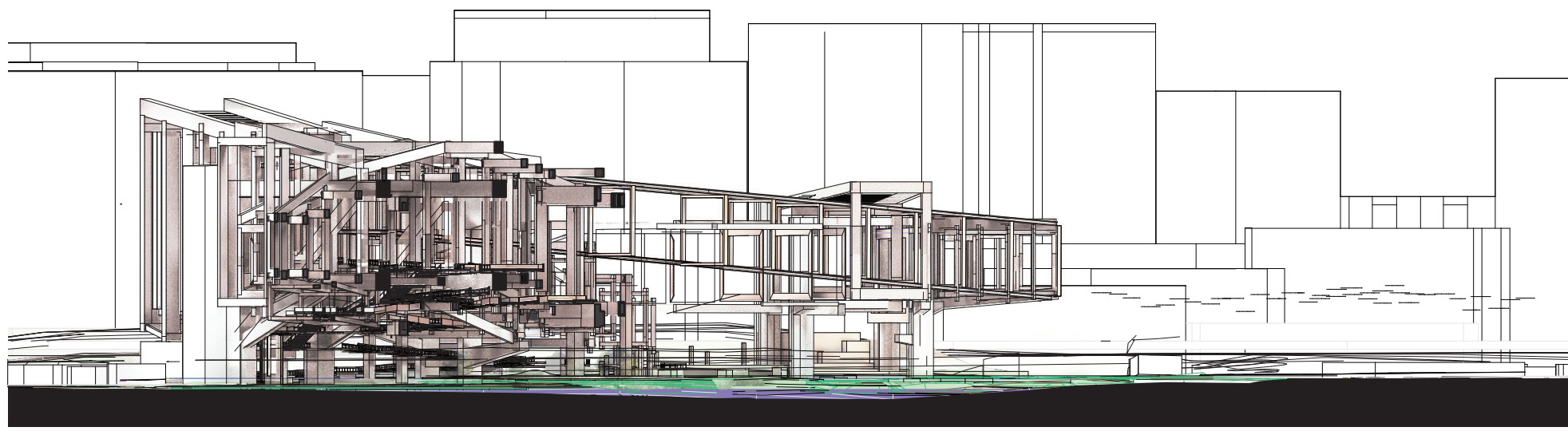


Above: Design renderings.

Below: Cross-sectional views through the design, facing east.

Bottom of page: Sectional view through the design, facing south.

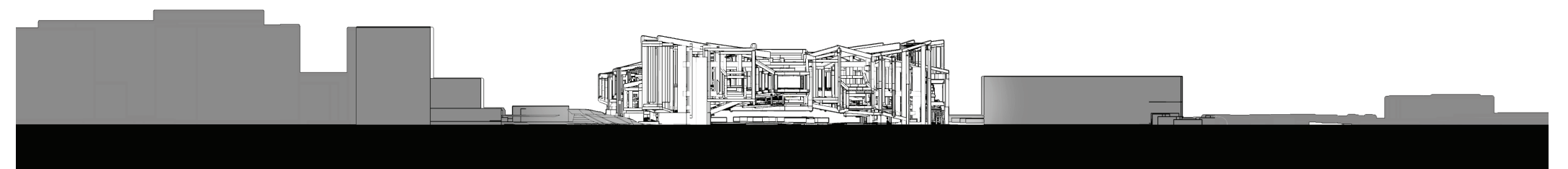
Below: Elevations.



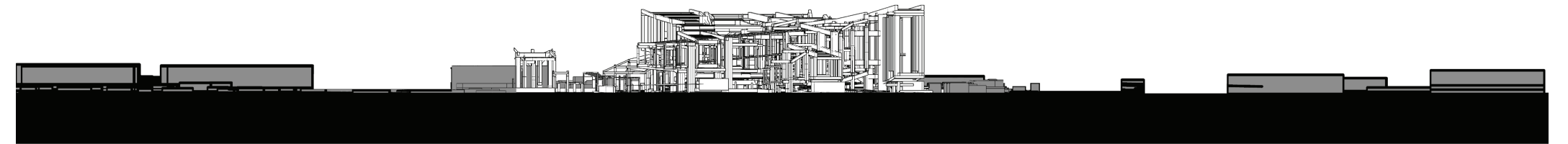
Elevation facing north



East



South



West

