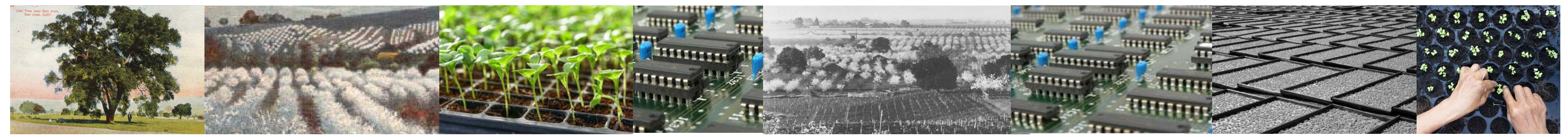


Silicon Valley is not the story of one, but of many: innovation through collective effort. We propose to apply this ethos to an urban Landscape, creating a monument to communal spirit and sharing of resources. Imagine extending the diverse landscape of Guadalupe River Park vertically, so that people all over the City can orient themselves to public open space. Supported by a timber frame that sequesters carbon, this vertical community infrastructure bridges the natural and social realms. We aspire to plant an eco-social seed that will continually sprout community growth, webbing the region together in a heterogenous relationship between nature and technology.

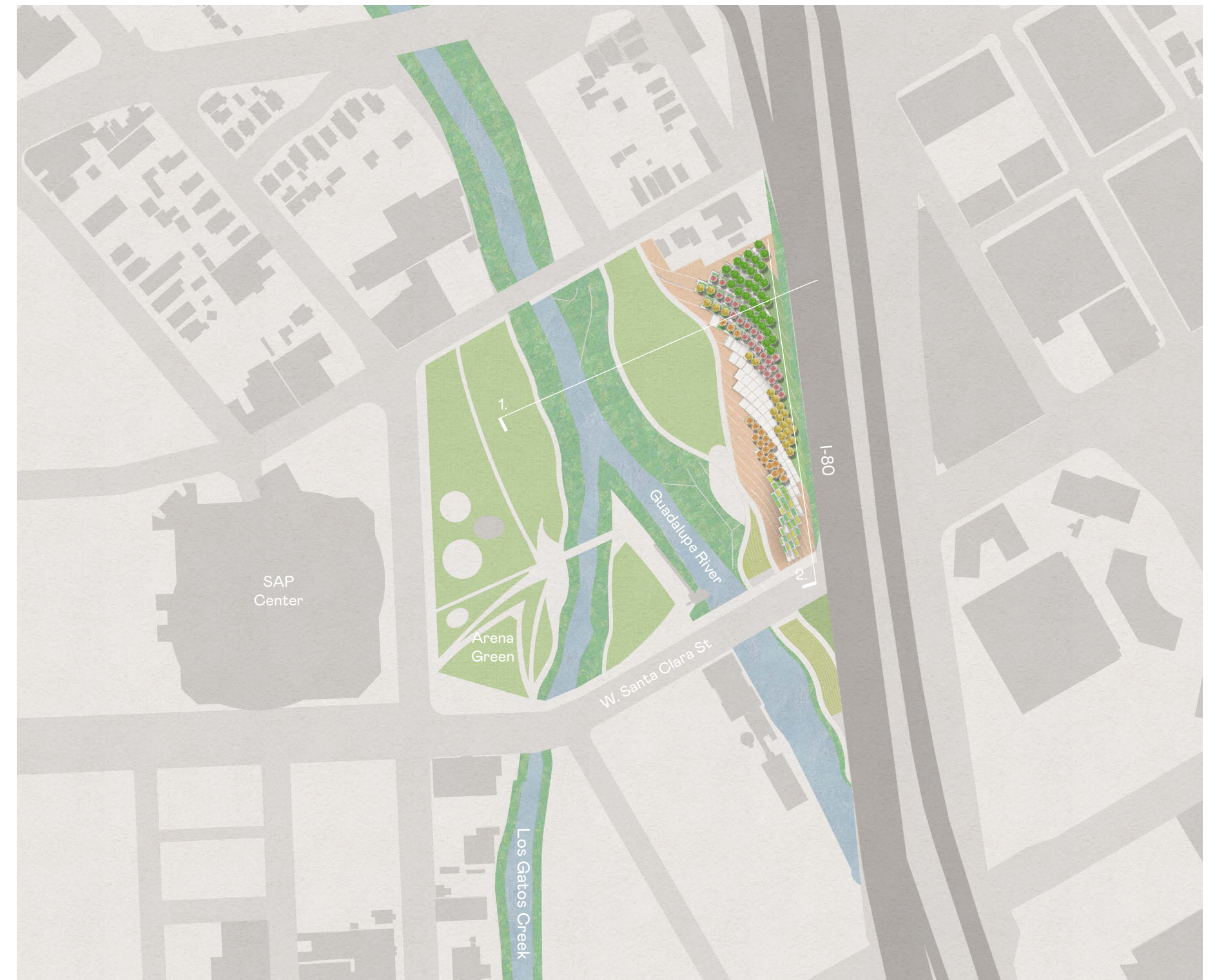


**Connect with History** In a valley of orchards, a diverse community of entrepreneurs, engineers and academics built a technological archipelago, established around an ethos of open-source sharing and experimentation. This incubator of collaborative spirit created fertile ground for one of the greatest economic expansions in history, from the era of horticultural expansion to the micro-chip revolution. Plant-net takes its inspiration from the geometries of the orchard and the micro-processor, which were



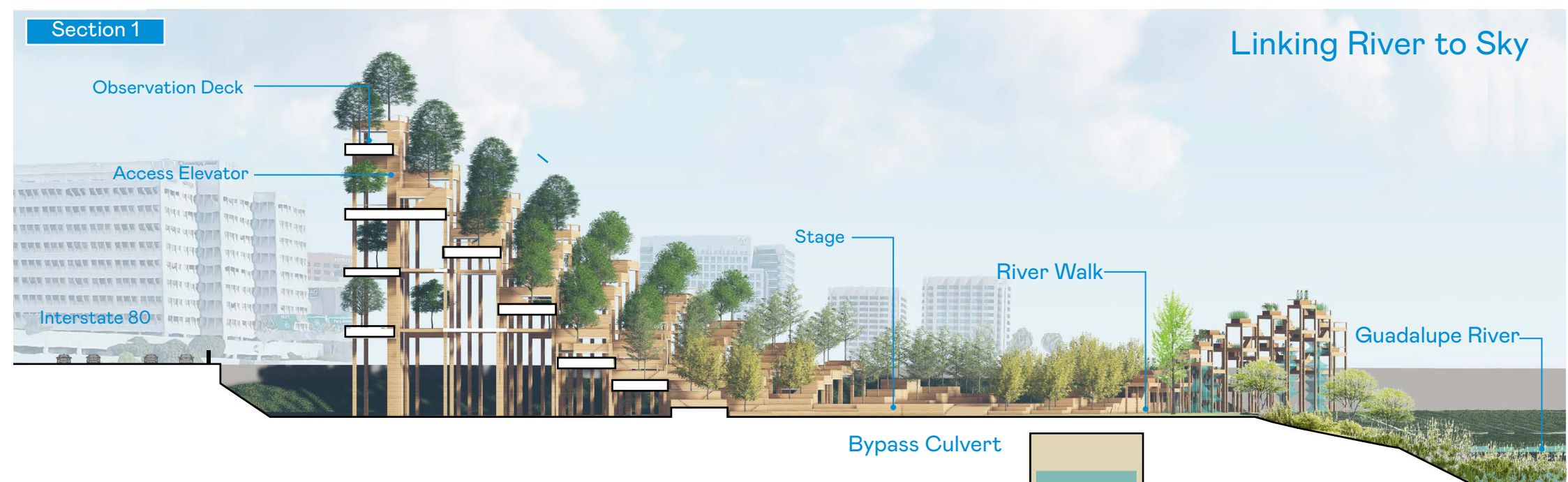
**Connect with the Valley**

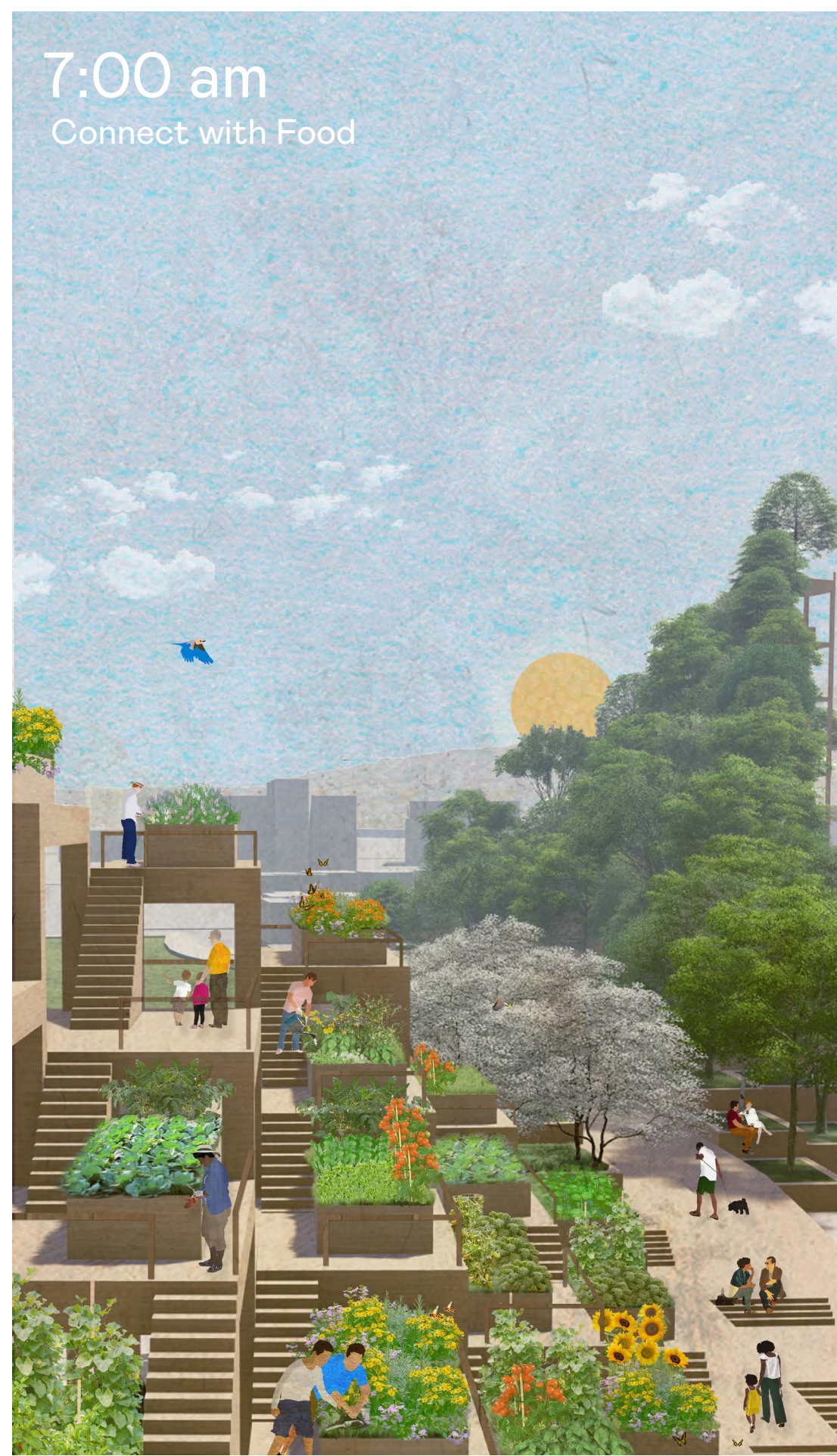
Plant-Net not only sits at the epicenter of global technological innovation but also at one of the confluences of California's rich biodiversity hotspots, the San Francisco Bay Area. The vast natural wonders that surround the city of San Jose provide the important linkages for ecological systems to remain connected. Decades of urbanizations have reduced the amount and dismantled the connectivity of green spaces. The Guadalupe River presents an opportunity to place an eco-social seed that will sprout to support community growth and continually spread throughout the city, webbing the region together in a heterogenous relationship between nature and technological innovation.



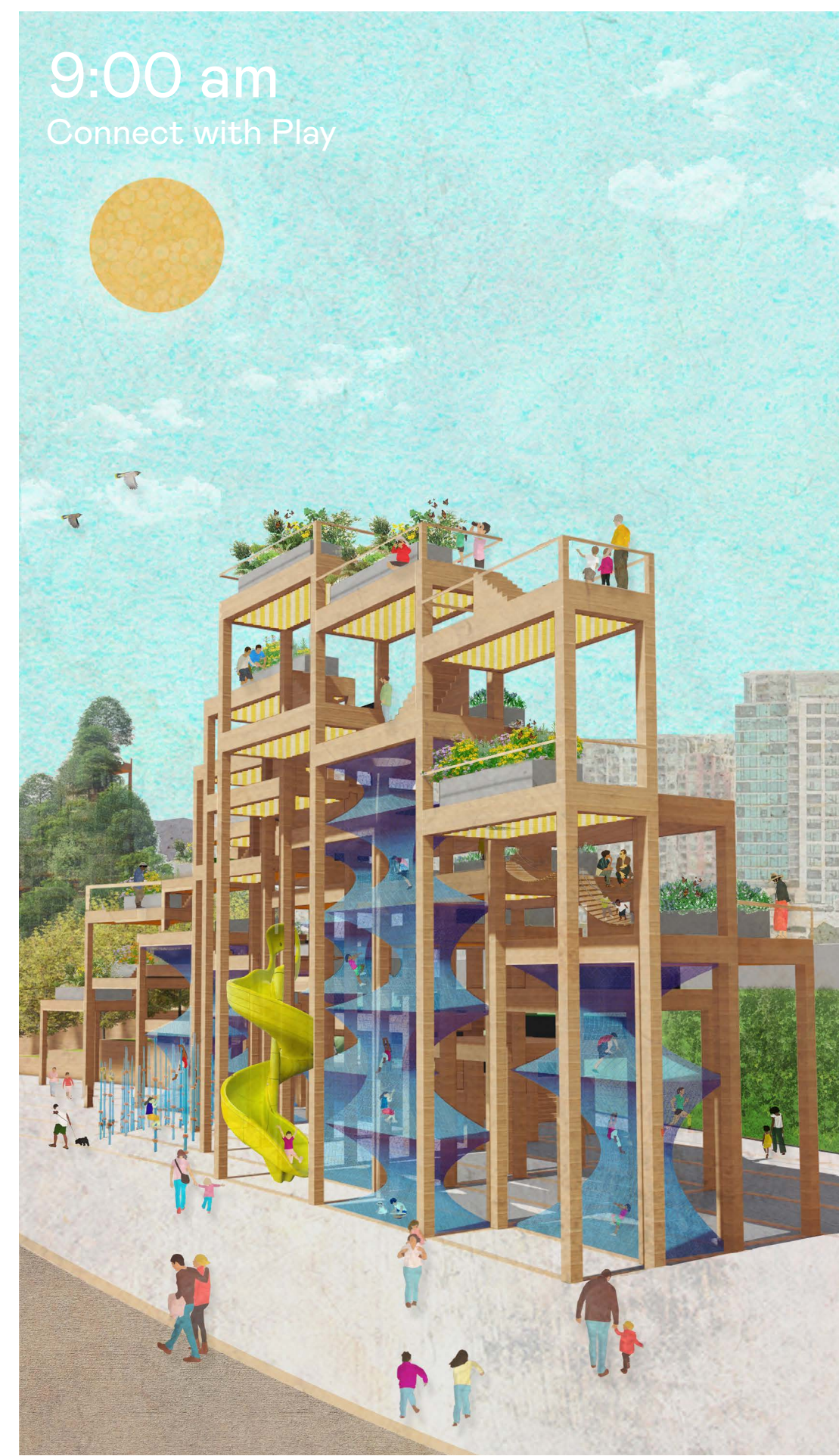
**Connect with the City**

Plant-Net is surrounded by urban edges: a robust road network, downtown density, and all the byproducts of urban environmental conditions. On the riverbanks of the Guadalupe, Plant-Net rises to puncture urban walls and function as a seed bank that will allure pollinators from the river. To support and expand environmental stewardship, Plant-Net becomes a natural resource to cultivate, and experiment with citizens' relationships to urban ecologies. Extending this as an equitable resource, these plots will serve as a seedbank adjusted to the urban conditions that will proliferate neighborhoods as new plantings into a greener San Jose.





**Vertical Kitchen Garden**  
Release into the Rhizosphere  
Passing information to the Future



**Adventure Playground**  
Tendrils to Adventure  
Exploring through Play



**View from the River**  
The Network, the Transitions, and the Urbanity



**Pollinator Garden**  
Buzzing Around



**URBAN GREEN**  
Places that feed the local urban ecology through enriched habitat patches, urban forestry, and social accessibility to the features of natural environments.

**WORK/CULTIVATE**  
Places that require and teach skills, support community stakeholders, and provide natural resources to the region.

**COMMUNITY**  
Places that allow gatherings or to fulfill the needs to congregate and be a landmark for city identity.

**PLAY**  
Places that allow interactive activity to explore and learn that provide the freedom to develop into their own unique plant steward.



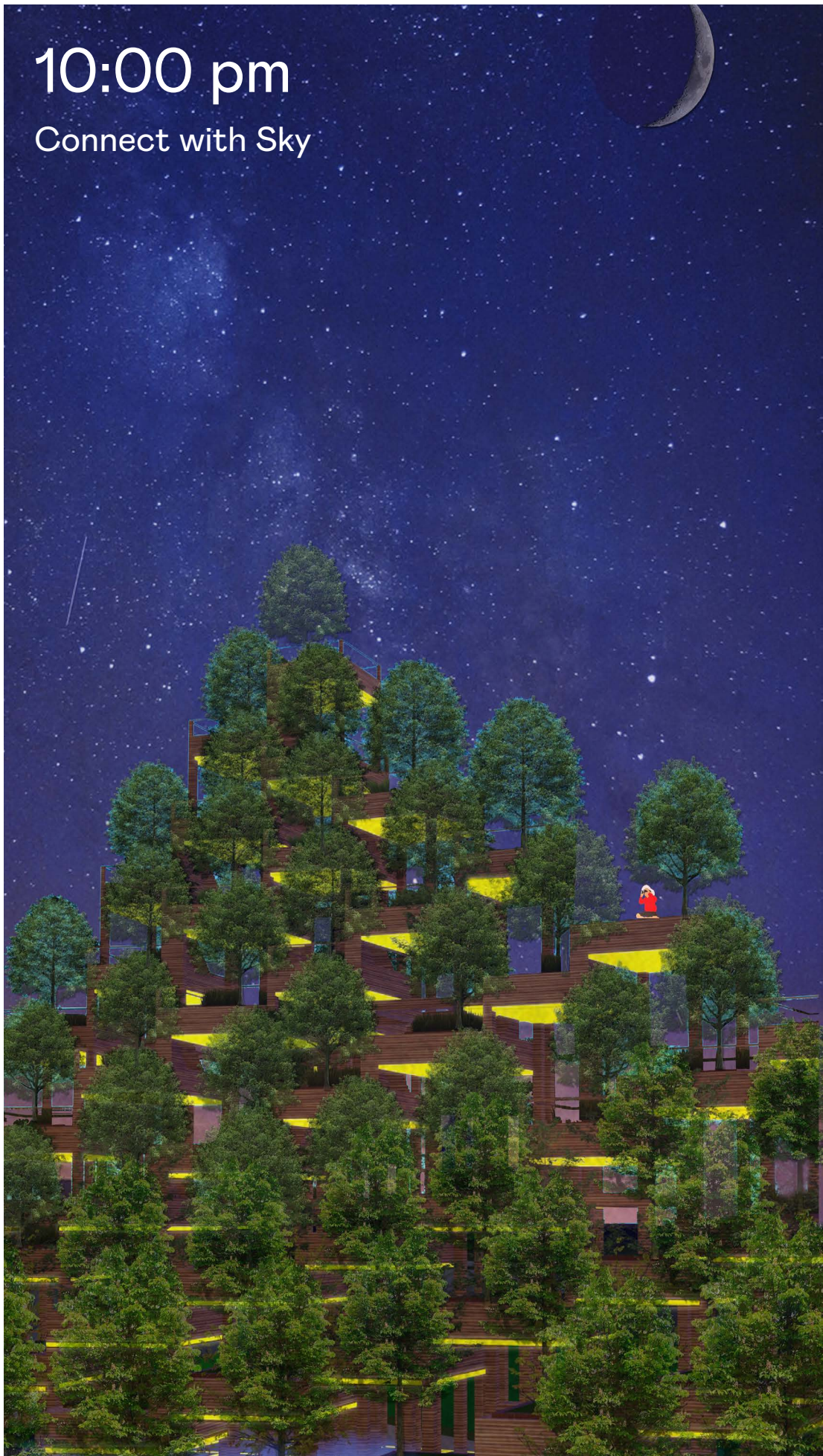
**Community Plaza**



**Observation Deck**



**Night View**



**Night View**  
Nature's Eiffel Tower



**Sky Nursery**