

The Tower of Babel. The Great Lighthouse of Alexandria. The Pyramids of Giza. The Parthenon in Rome. The Eiffel Tower in Paris. The Statue of Liberty in New York. CN Tower in Toronto. And the Seattle Space Needle.

Each an iconic landmark that placed their respective city on the map.

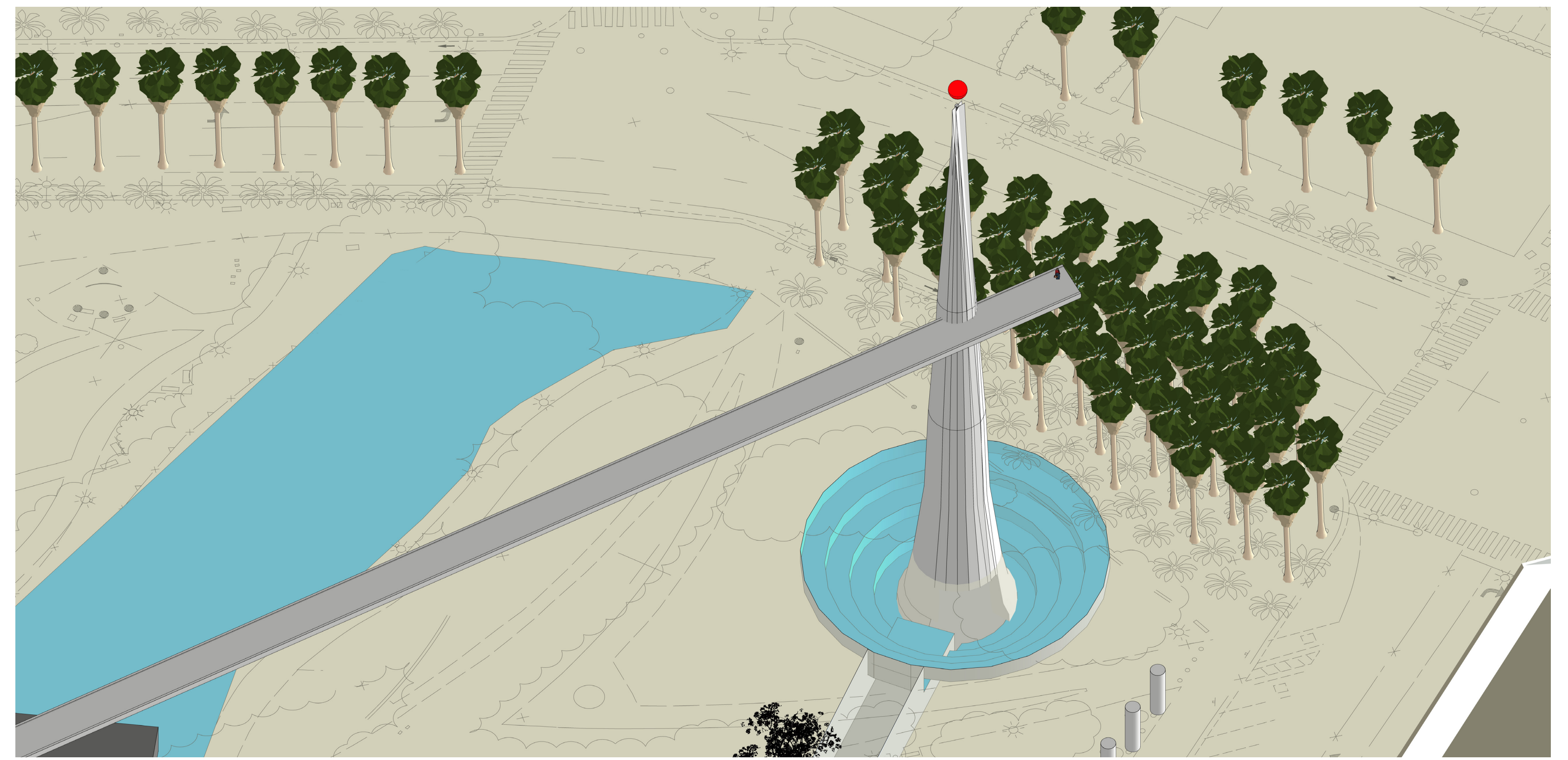
And now, a spectacular new iconic landmark in the heart of Silicon Valley, San Jose - home to the greatest concentration of prosperity and knowledge in the history of human civilization.

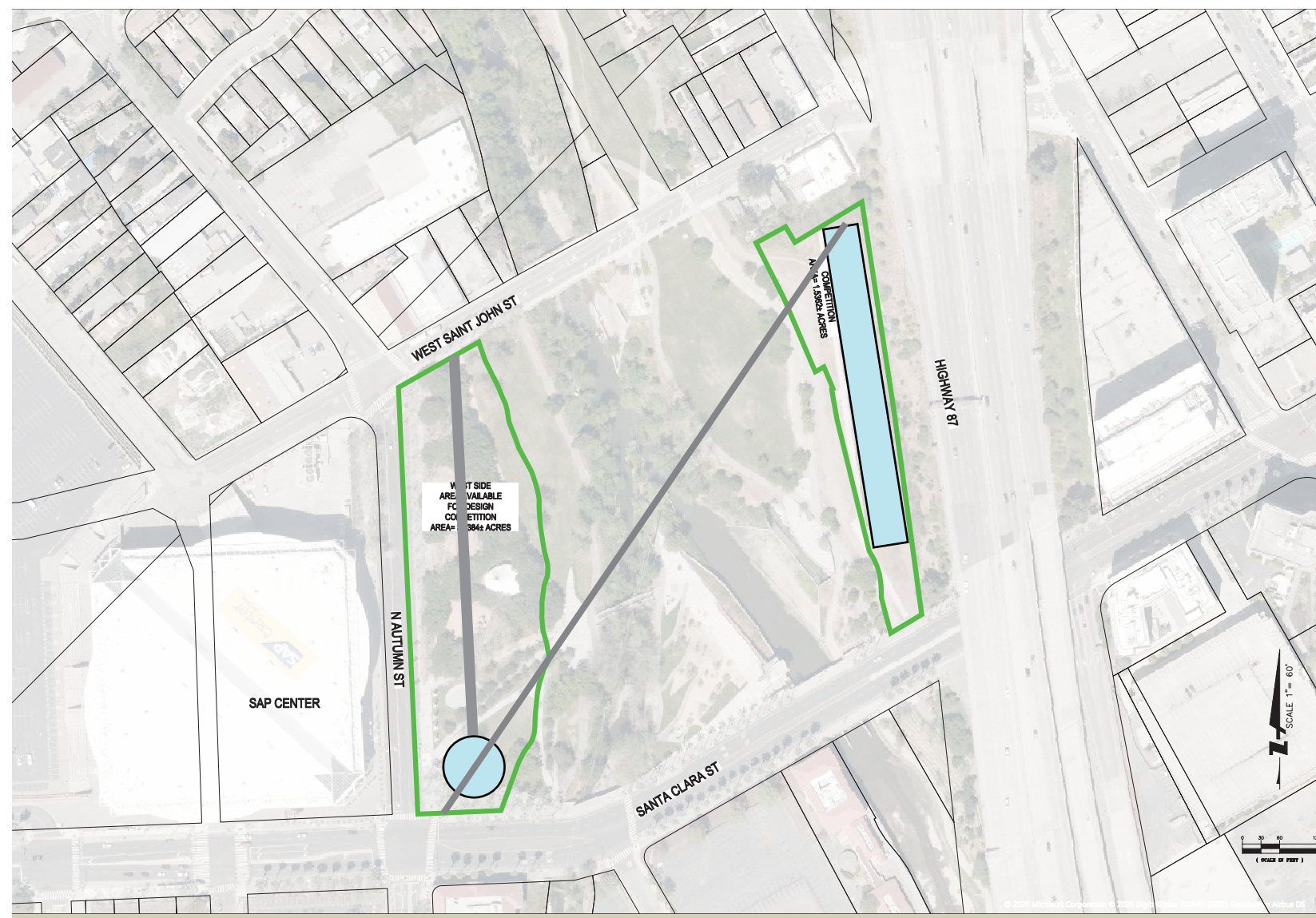
Welcome to the world stage the latest monument,

Confluence Point Tower.

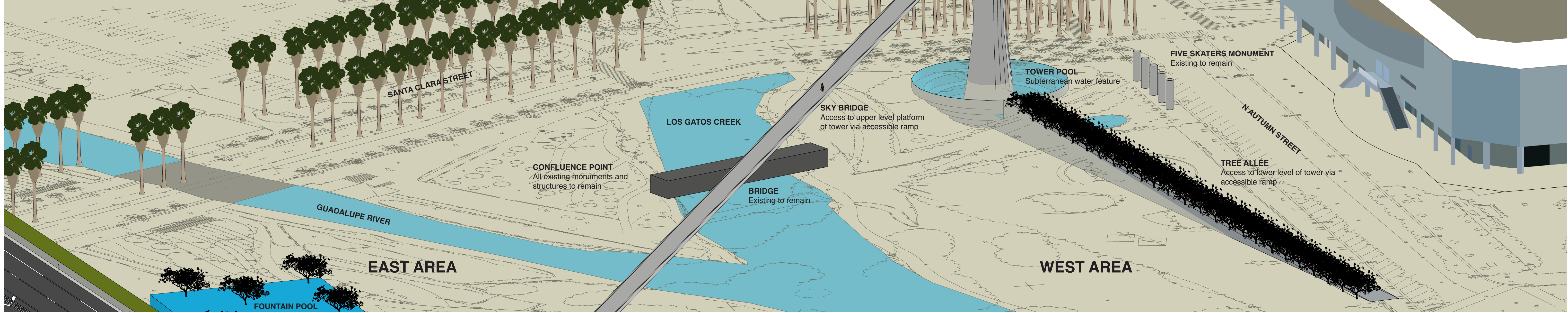
FEATURES INCLUDE:

- Existing landscape and site to remain undisturbed wherever possible to reduce impact to native habitat
- LED light to be set on timer with seasonal overrides to minimize impact on native fish and bird species
- Water features to be set on closed loop to reduce water impact
- All features of the site to be fully ADA accessible
- Potential for coffee carts/cafes to enhance user experience and offset any operational costs
- Maximum height of tower is two hundred feet per FAA requirements
- Monocoque structure for sky bridge to span from East to West sides of site with no intermediate supports
- All existing site monuments, bridges, and memorials to remain





SITE MAP IMAGE



LIGHT
Dynamic Color LED Lamp - Set to timer/seasonal dimmer to avoid disturbing native bird and aquatic species

TOWER MONUMENT

SAP Center

FIVE SKATERS MONUMENT
Existing to remain

TOWER POOL
Subterranean water feature

SKY BRIDGE
Access to upper level platform of tower via accessible ramp

LOS GATOS CREEK

CONFLUENCE POINT
All existing monuments and structures to remain

BRIDGE
Existing to remain

TREE ALLÉE
Access to lower level of tower via accessible ramp

EAST AREA

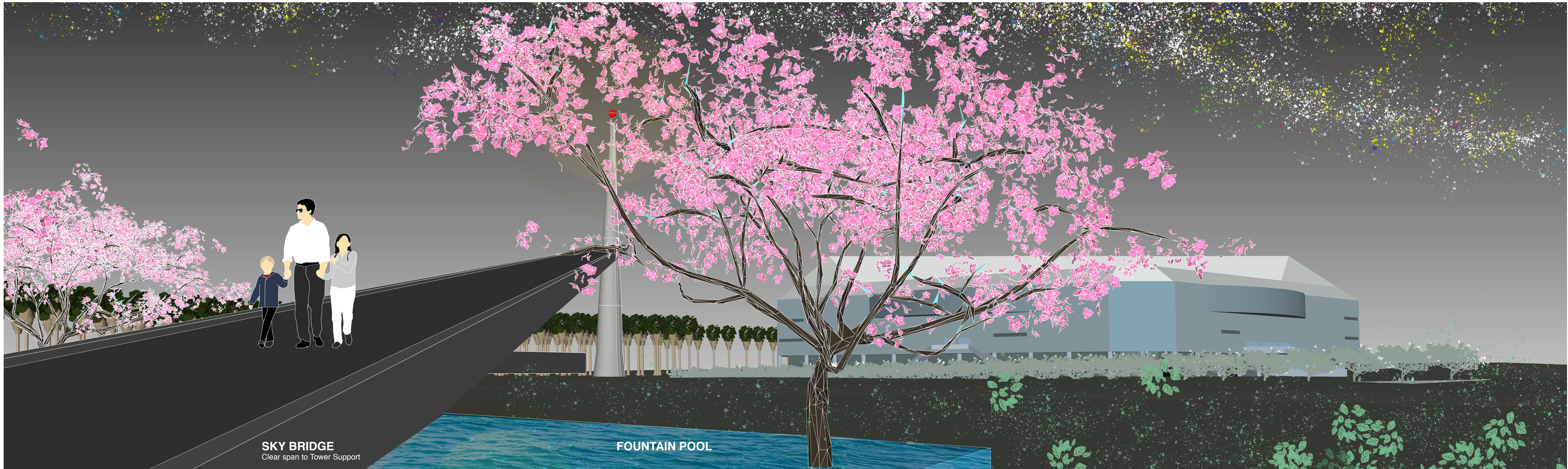
WEST AREA

GUADALUPE RIVER

SANTA CLARA STREET

N AUTUMN STREET

FOUNTAIN POOL



SKY BRIDGE
Clear span to Tower Support

FOUNTAIN POOL

CONFLUENCE POINT TOWER