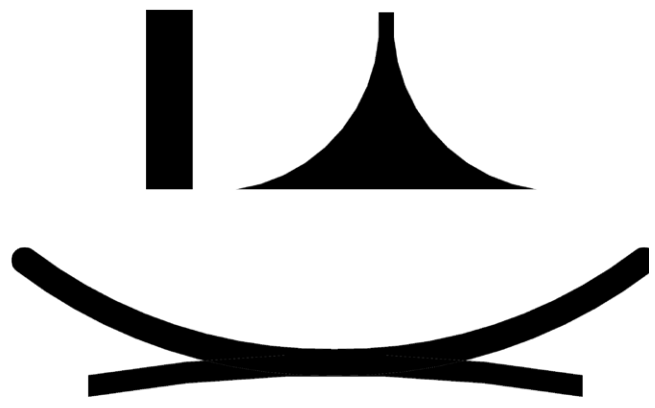


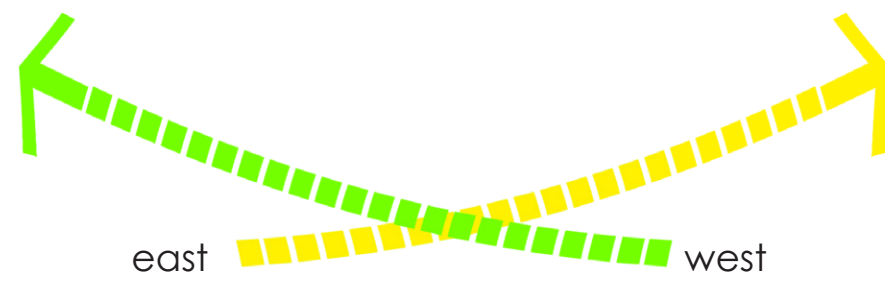
ENGAGEMENT BRIDGE

The mid 20th century is marked with some silent digital revolution and it peaked in the late 20th century. With the exploration of digital information technology, it leads to the rise of revolution in digital information technology at the beginning of the 21st century. The most significant things that revolutionized in digital information technology are re-defining the concept of time and space. Because of this, the digital information technology has created significant shifts that lead to many new revolutions. The innovation exchange between people in the world is accelerating, so many new innovations followed emerged, exponentially.

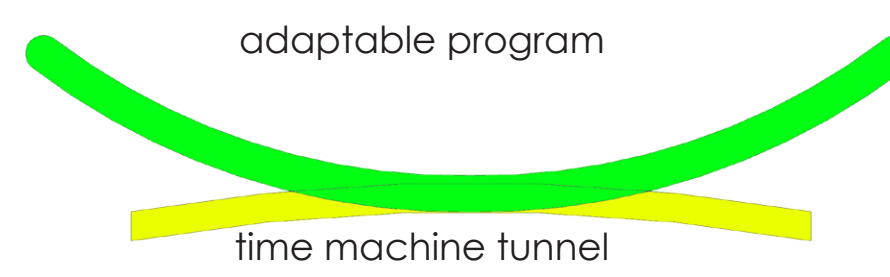
The eiffel tower is meant to be the symbol of the industrial revolution. The mass production and a mass optimization with mass division of labor forces are needed to create such a gigantic monument that symbolizes the peak of the industrial revolution. Silicon valley and San Jose especially are the home of the digital information revolution that has become the major society shifting in new millenia. Our intention of creating this monument is based on the very base idea of digital revolution : the change of understanding human interaction and engagement.



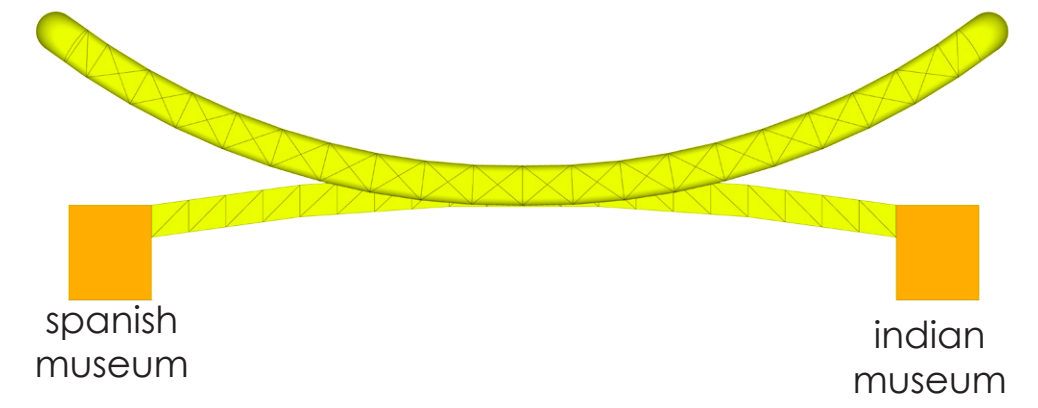
With an already limited and disconnected site between east and west. We have decided to connect those two small sites to create a significant scale of monument horizontally. We create a connecting bridge between east and west, to create a 1,000 feet long monument.



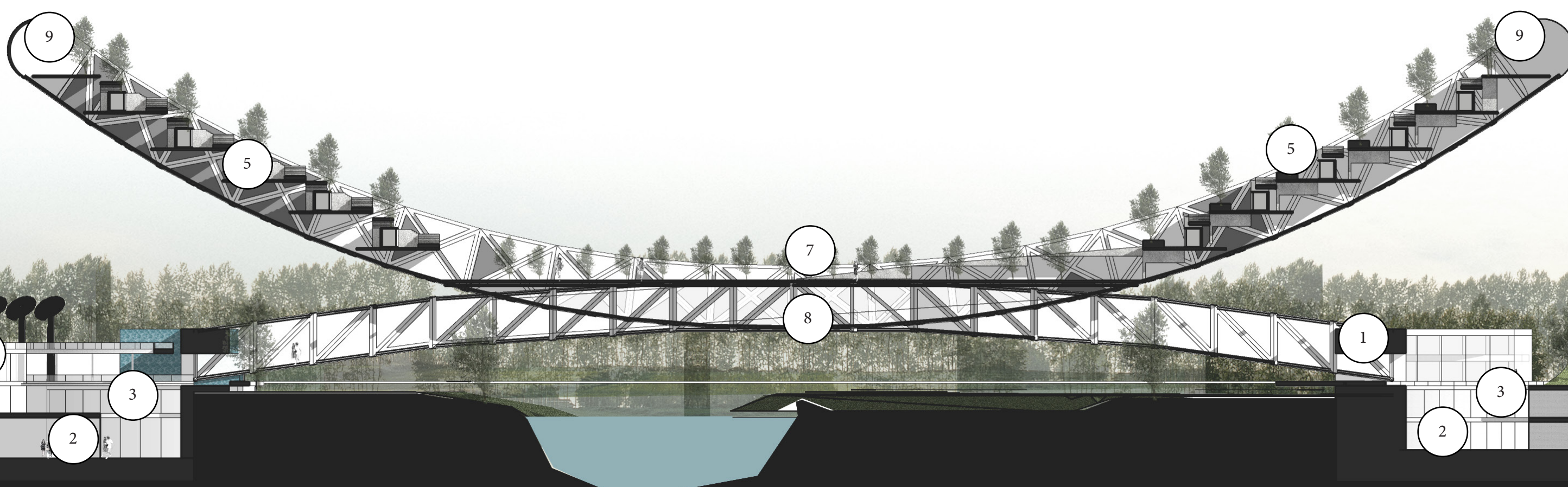
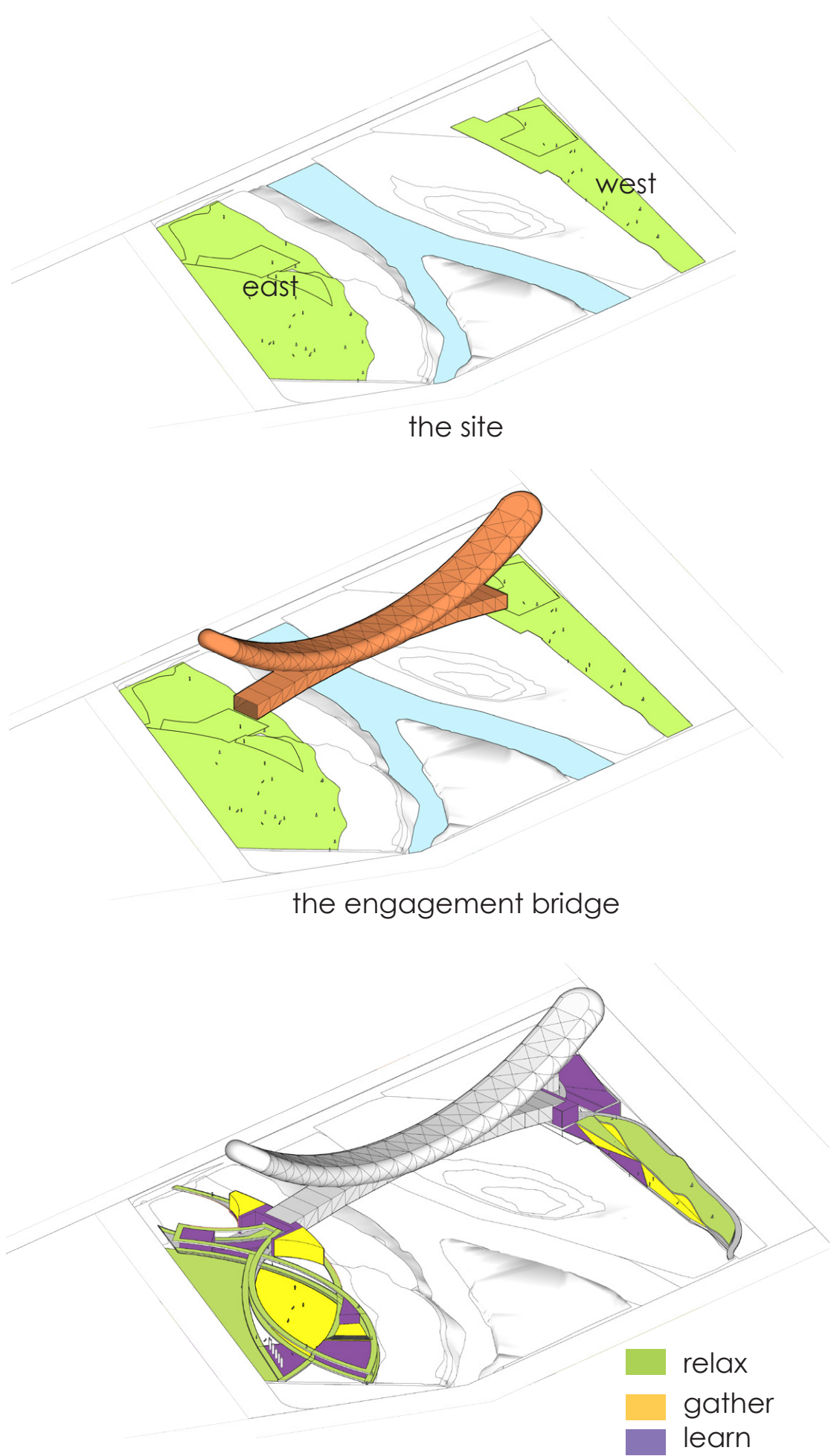
The form is also a symbol of a confluence between los gatos creek and guadalupe river. (east and west)



Our intention of creating this monument is based on the very base idea of digital revolution : the change of understanding human interaction and engagement.



To create such a long span bridge with a gigantic sculpture above it. We are considering creating a megastructure at the monument foundation. This gigantic foundation, although bearing a huge amount of force, could be used as another function. We choose to create a historical museum of Indian and Spanish history that is located at the very end of the bridge. This museum symbolizes the strong roots of San Jose to Indian and Spanish influence



1. Exhibition & Gallery
2. Museum
3. Library, Workshop, Class
4. Corridor & Facilities
5. Sky Commercial Area, F&B
6. Ground Urban Farming
7. Sky Farming Area, Sky Forest
8. Tunnel of Time
9. Observatory Deck
10. Jogging Track
11. Sport Center

ENGAGEMENT

HUMAN TO NATURE

HUMAN TO HUMAN

PRESENCE OF FOREST AND URBAN FARMING

PRESENCE OF PUBLIC SPACE MUSEUM, EDUCATION CLASS

LIGHT TUBE (ADAPT-ABLE AMBIENCE FOR CERTAIN PURPOSE)



HUMAN AND ENVIRONMENTAL ENGAGEMENT

The beginning of the 21st century also marks a significant environmental degradation. The most pressing issues are energy sustainability, global warming and food scarcity

Urban Farming

We are addressing the issue of sustainability in the form of food security. In this sculptural tube are the functions of urban farming.

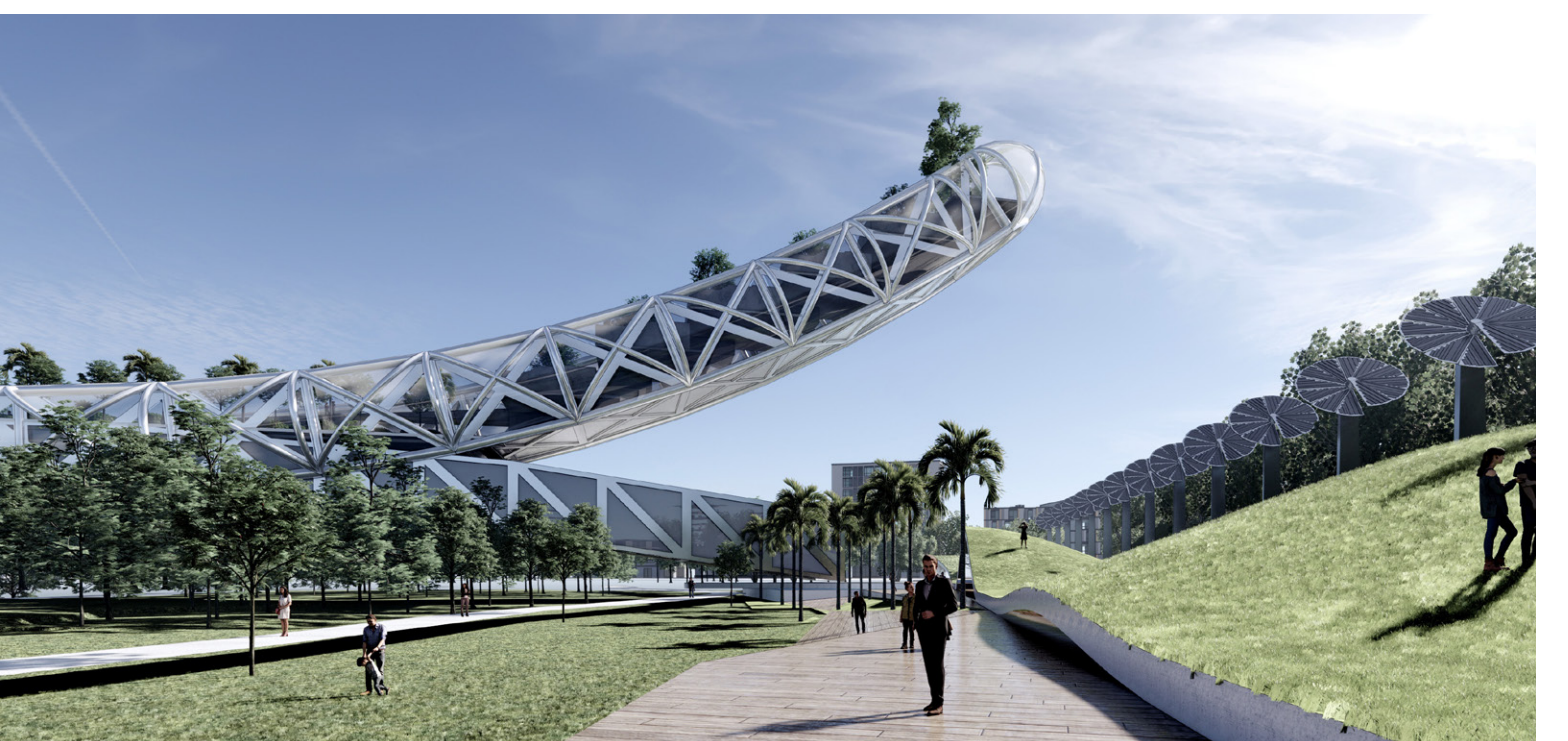
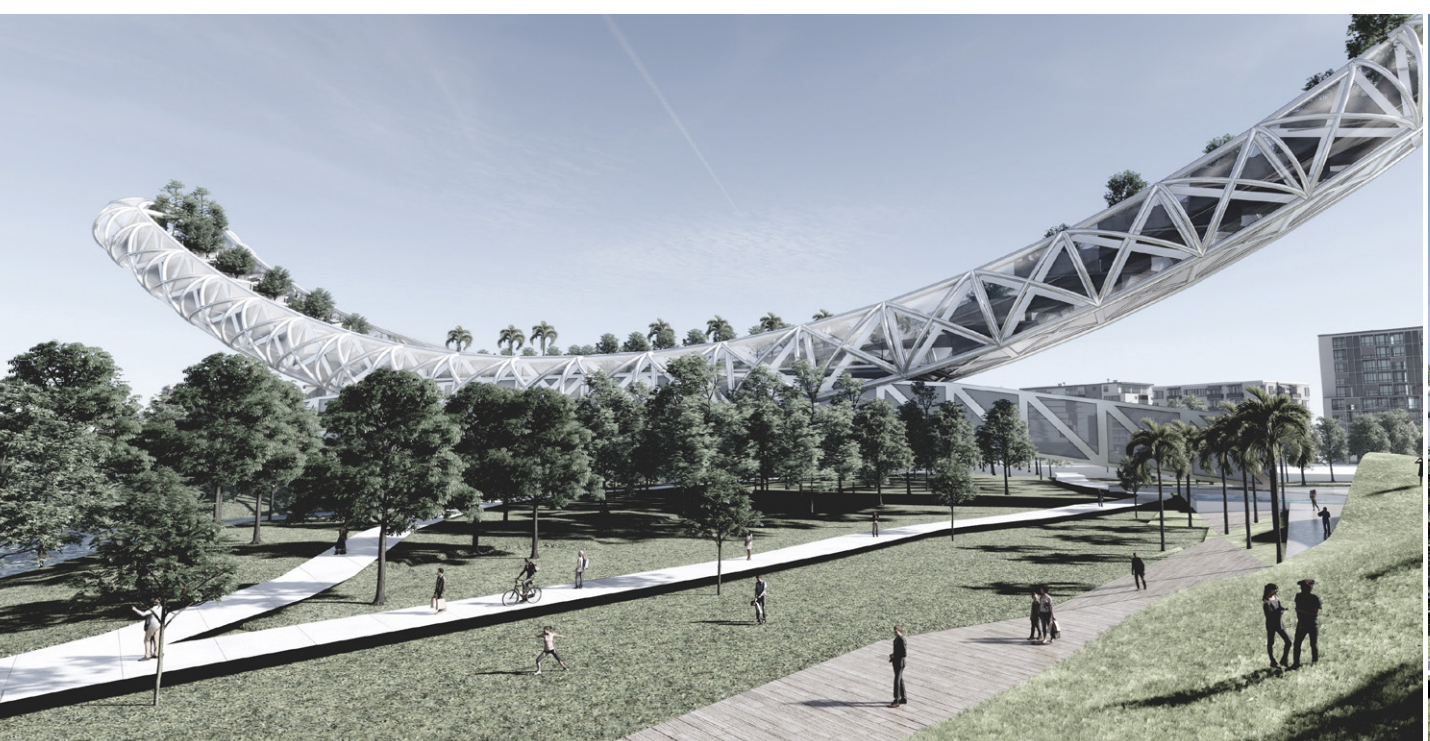
Sky Forest

The forest is meant to become a main place of human interaction to its environment. Located at the top of the monument.

Solar Panel

To sustain the sustainability of energy we also located a solar panel energy generator to be used as a secondary power source for lighting attraction.

HUMAN AND ENVIRONMENTAL ENGAGEMENT



TUNNEL BRIDGE

