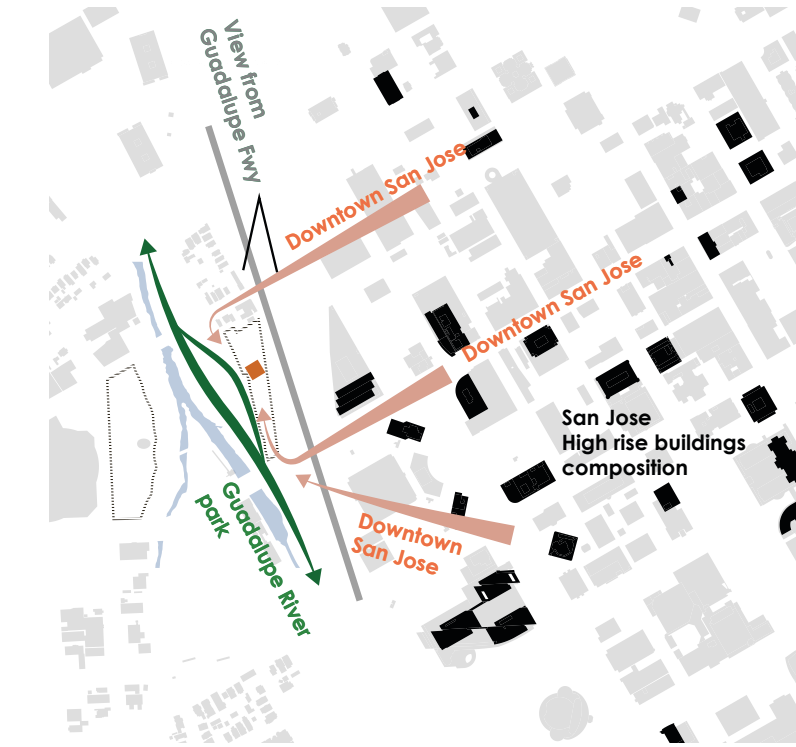


"Reverse San Jose"

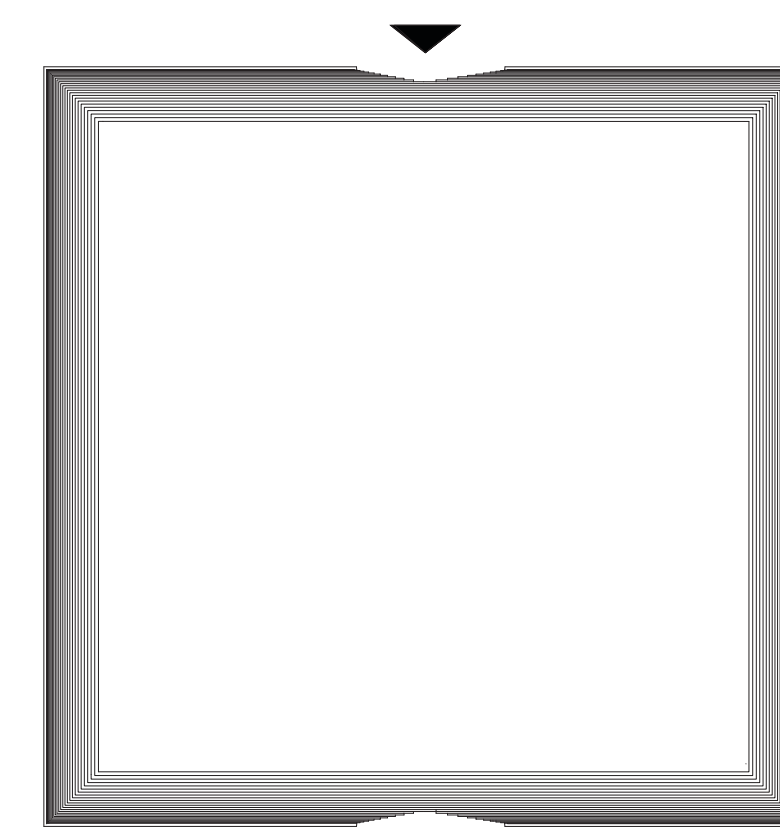


Design strategy

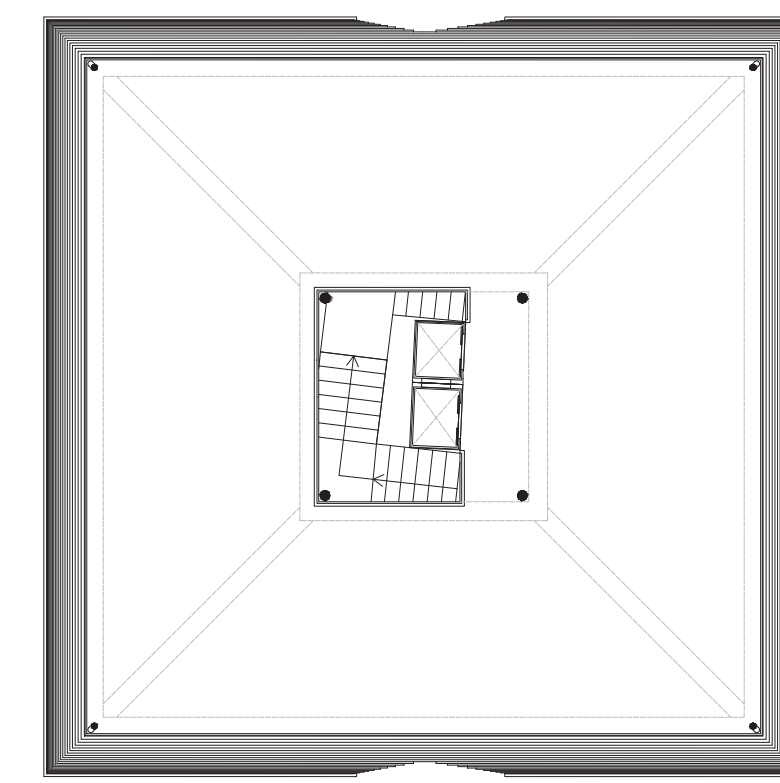
For the placement of the landmark object was chosen the east part of the building site, that is connected morphologically with the center of the city and also is closer to high-rise buildings, moreover this part of the park could be connected with the center through the embankment of the river and is more actively used by the pedestrian according to Strava



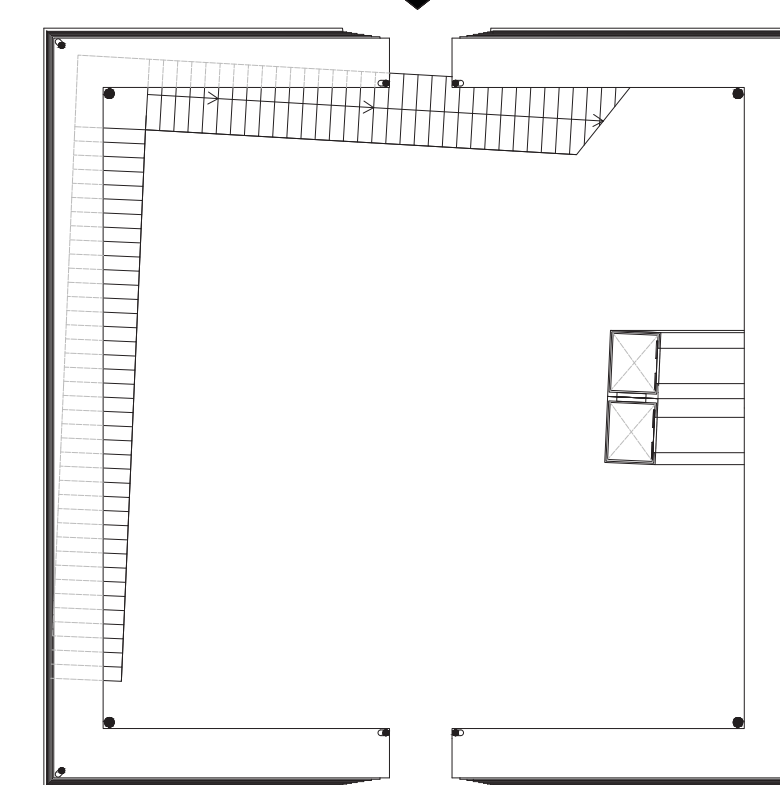
Site Map ■ Tower location



Roof plan on the height + 190 ft



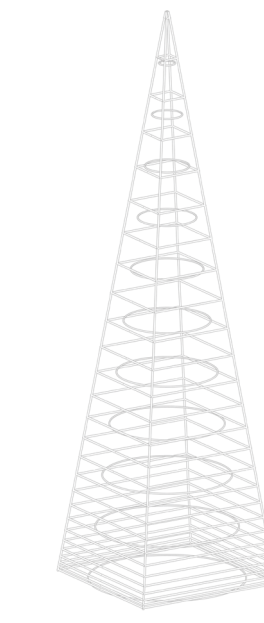
Roof plan on the height + 141 ft



Roof plan on the height + 29 ft

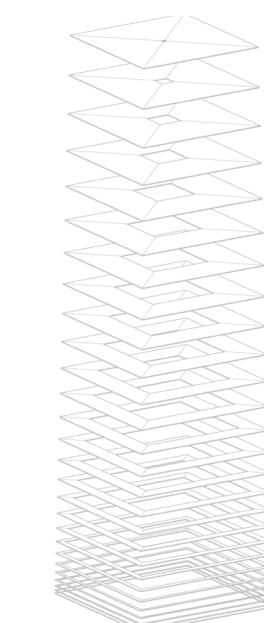
Shape-definition schemes

We believe that the tower should be innovative and impressive, however, laconic and accessible for people, celebrating the freedom, democracy, equality and open-minded principals of the region. We also believe that the true iconic of the silicon valley should be minimalistic and light, showing intelligent and simple design that will create pure beauty of the landmark



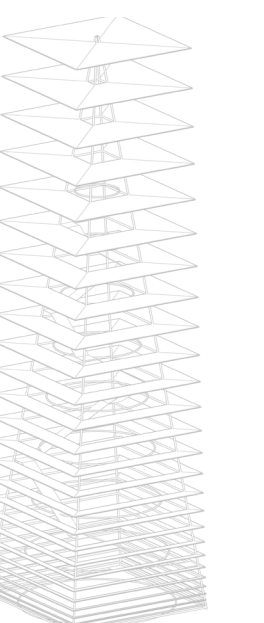
1. Steel basic structure

+

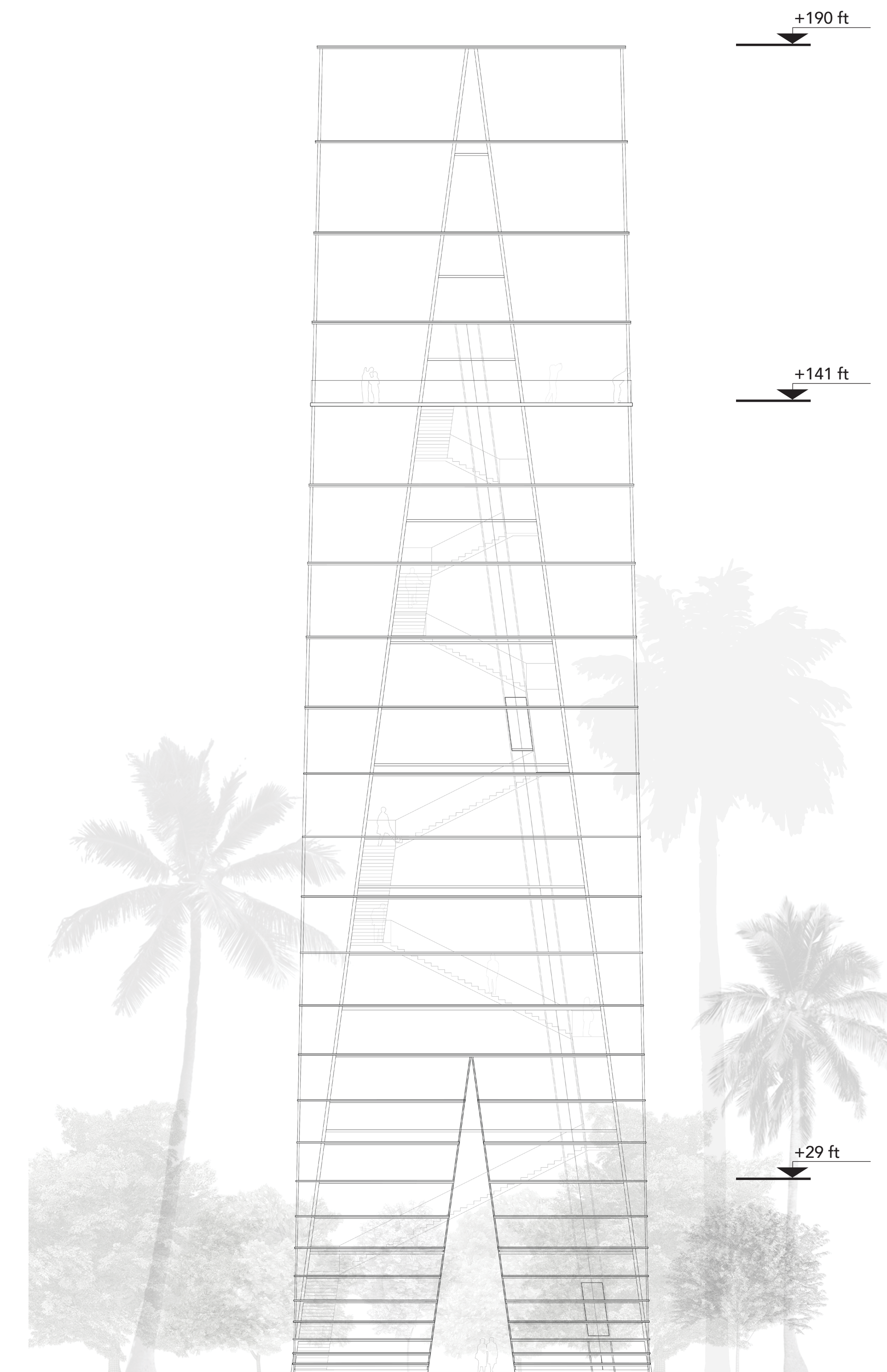


2. Solar glass panels in parametrically arranged progression

=



3. Final structure + vertical connectors for accessibility



North elevation

"Reverse San Jose"



Viewpoint within the tower



Site plan M 1:500

What is San-Jose?

Sunny Sustainable
 Diverse Freedom Vibrant Unique
 Innovative Digital Sunny Future and

Design Strategy

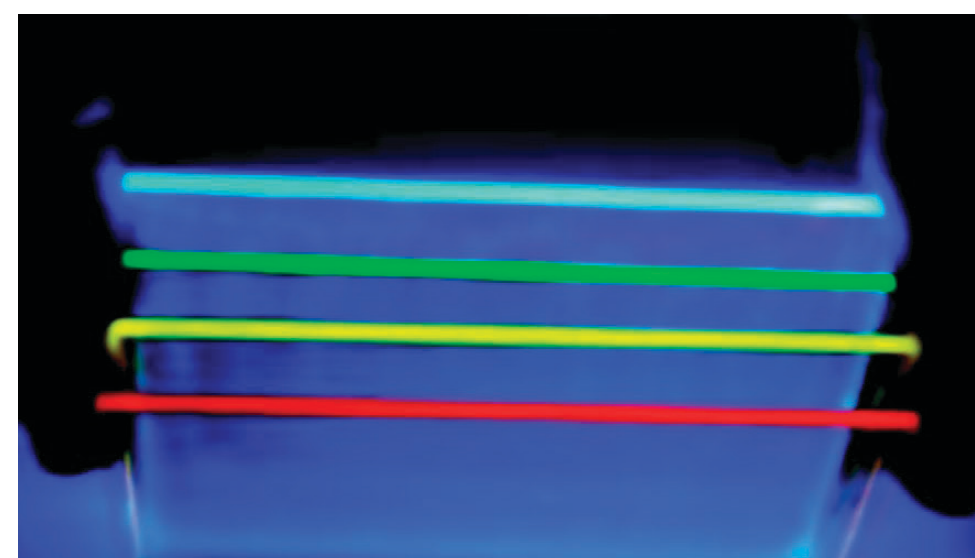
History

Architecture is inextricably linked to context. The metaphorical reverse in design in relation to the iconic image of the lighthouse should become a new point of attraction for the city



Postcard of night view of electric light tower in San Jose California, circa 1910

Innovations and Sustainability



Example of luminescent solar concentrators
 Image courtesy of MIT and researchers Marc Baldo, Michael Currie, Jon Mapel, and Shalom Goffri. Photo by Donna Coveney

The application of special dyes to the surface of a pane of glass or plastic can cause a certain spectrum of light to be diverted at concentrated levels directly to the edges of the glass. The combination of the new shape of the tower and this innovative material could create spectacular link between the historical design and innovations and provide change of the silhouette throughout the day

