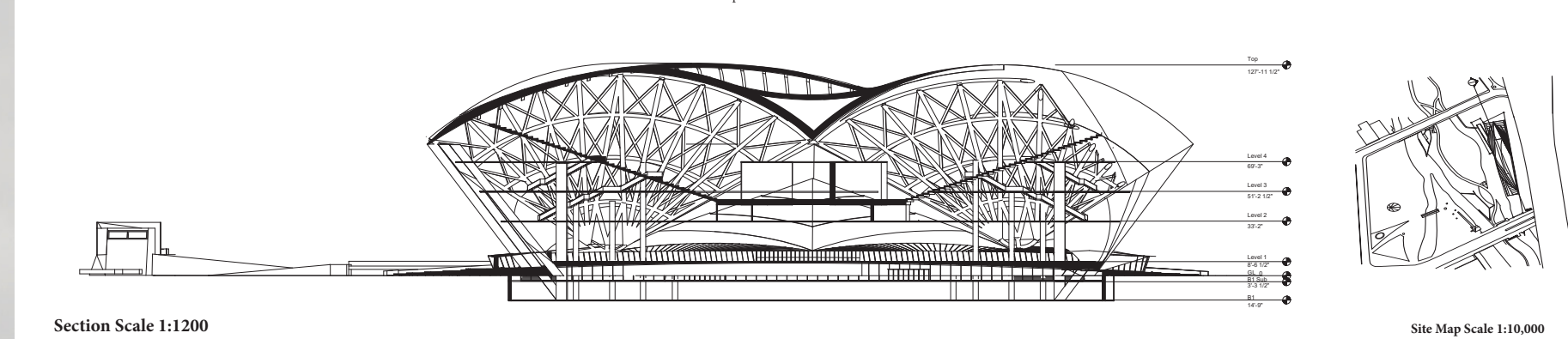
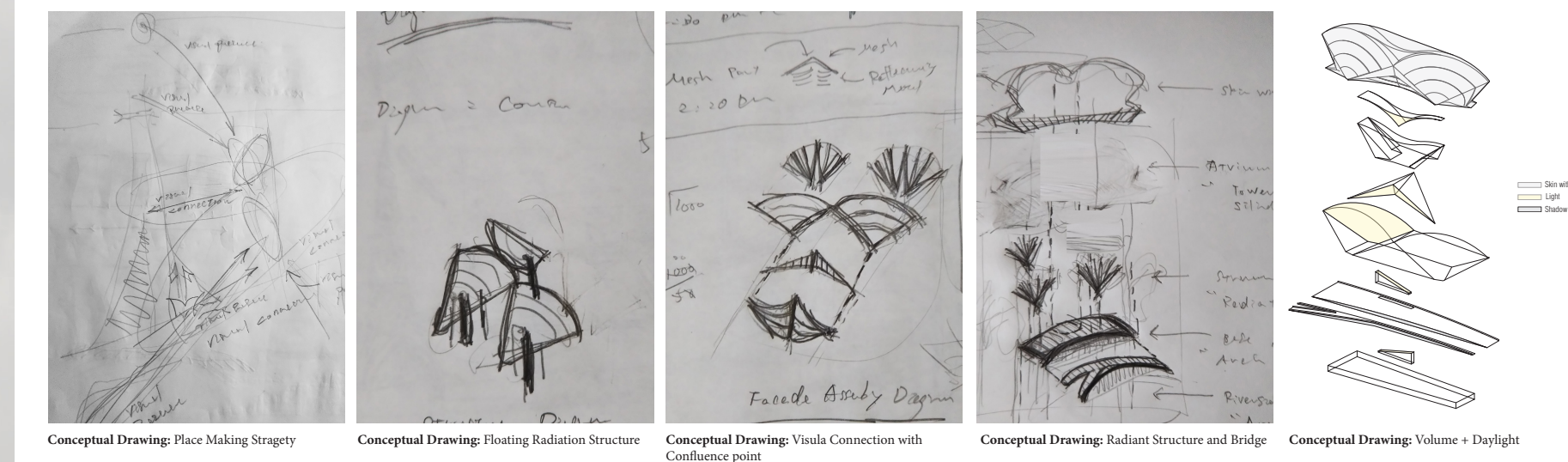
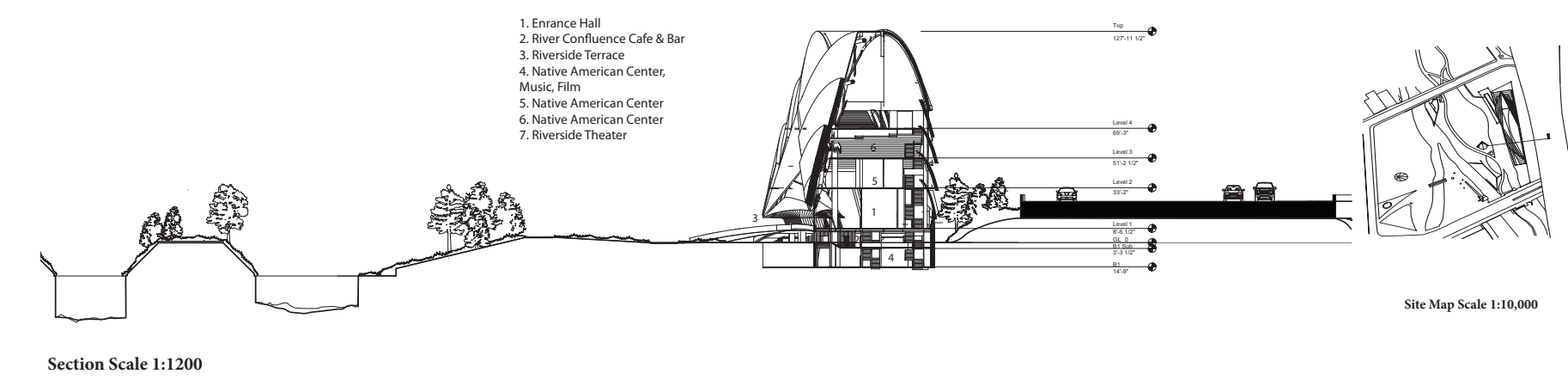


Confluence Theater

The project proposes Confluence Theater. The concept is the organic, movement, gathering and tectonics. The theater interprets the electric light tower as the architectural organism. The roof structure is inspired by the crab's shell. The program is Native American center, riverside theater, gallery, lounge, cafe and bars, viewing over the new world of the international urban confluence. The illuminated theater, rising from a gesture of the river and creek are intended to be a place and wayfinding for the trinity of River, Park and Community where people can feel a hope for peace and dignity.



View from South at Santa Clara Street
The Confluence theater is conceived from a silhouette's outline, viewed from the Delmas Avenue. The convex ridges of the theater is a gesture rising from a gesture of the River and Creek.



Confluence Theater
 Total Floor Area: 114,551 (SF)
 B1: 28,886 (SF)
 1F: 18,807 (SF)
 2F: 23,082 (SF)
 3F: 20,264 (SF)
 4F: 18,890 (SF)
 5F: 4,622(SF)
 Riverside Theater 2-3 F
 Auditorium: 6,150 SF; Stage, Aisles, Control Room)
 Seating Capacity: 1,025 seats
 Riverside Theater 2-3F
 Auditorium: 6,150 SF; Stage, Aisles, Control Room)
 Seating Capacity: 1,025 seats
 Program:
 B1: Native American Center, Meeting Room, Costume Room, Rehearsal Room, Bathroom
 B1 Subterranean: Café, Bar, Store, Museum Shop, Bathroom
 1F: Entrance Hall, Box Office, Native American Center Reception, Café
 2F: Riverside Confluence Theater, Lobby, Foyer, Coats room, Bathroom, Riverside Theater (Seating Capacity: 1100 seats)
 3F: Sky Gallery, Concession, Café, Bar, Restaurant
 4F: Control Room, Machine Room,



View from North at Julian Street



View from West at the Santa Clara Street



View from North at St John Street



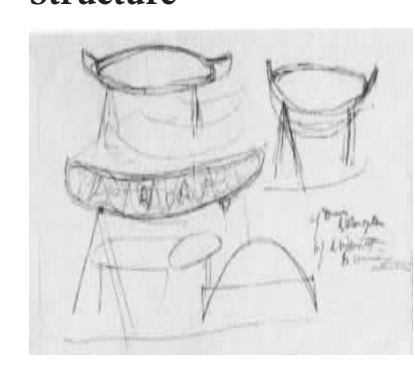
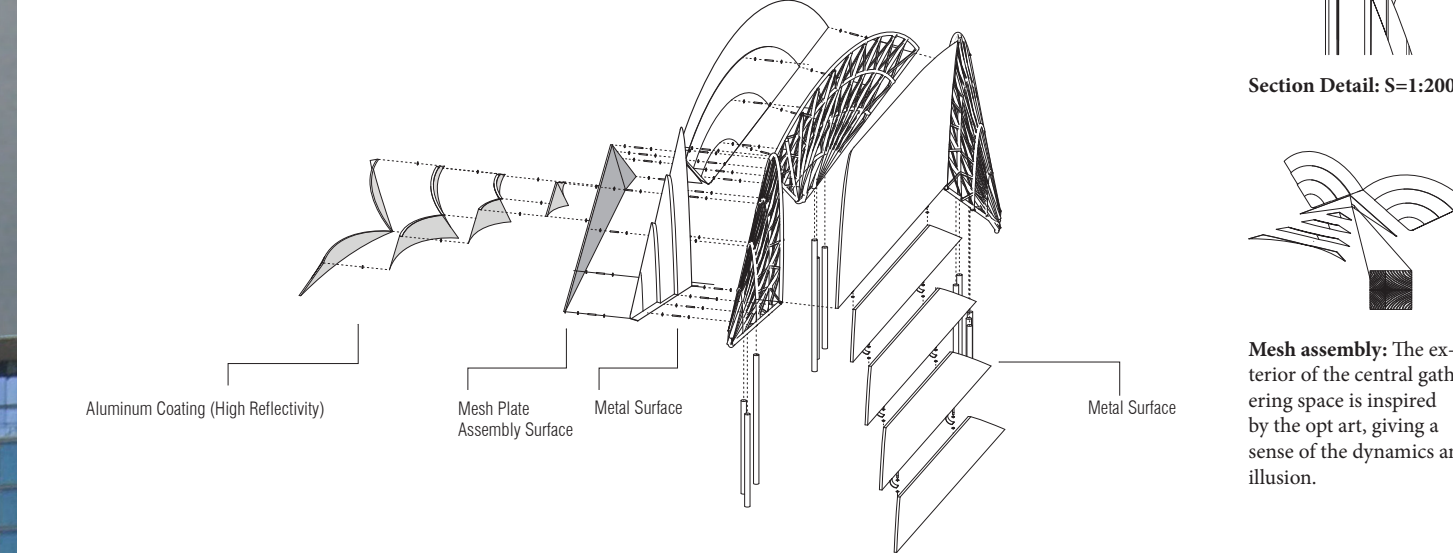
View from the Guadalupe River Trail

Elevation
 The bridge structure as the base of the building is a transformation from the traditional rectangle base. The convex ridge of the base and the floating radiant structure over the bridge is intended to make a unity of the multiple elements with the convex ridges in the site. The café and bars arranged in the low height convex structure at the approximately ground level, is intended to establish a sense of the radical human experience in the cave.



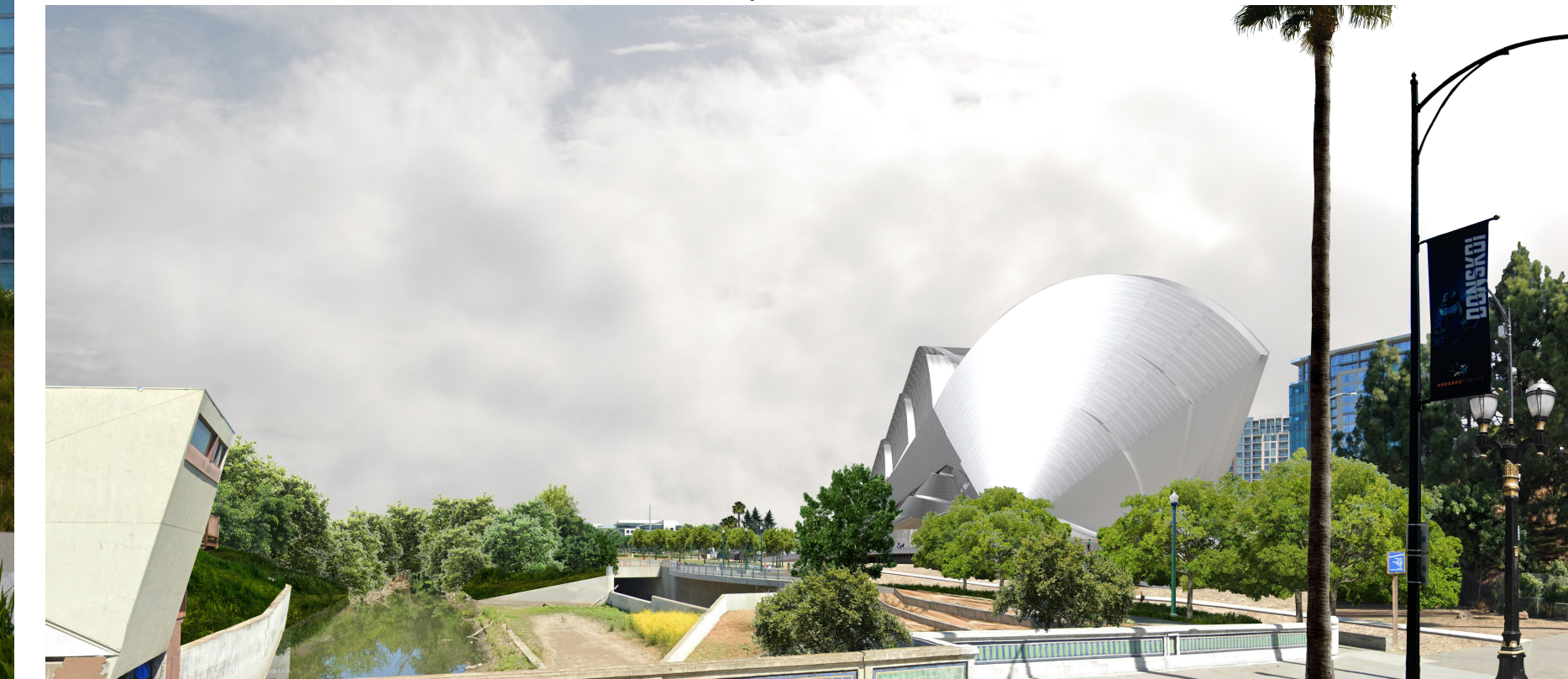
Structure

The main structure of the theater is organized by the radiant structure, supported by the vertical columns on the base of the convex bridge supports the curved concrete shells covered by the silver metal and the warm gold Kasota stone. To enhance the visual connection with the blended water of the confluence point, The two curvilinear elements, using the assembly of the brise soleil shapes the exterior of the main entry. The reflective metallic skin and mesh skin of small rectangular pieces which is an assembly by the curved metal rods, inspired by the optical art, giving a sense of energetic movements in space.



Study Sketches drawn by Le Corbusier for the design of the Chapel of Ronchamp, the roof structure is inspired by the crab shell sketch from "Le Corbusier, Chapel at Ronchamp, Denise Pauly"

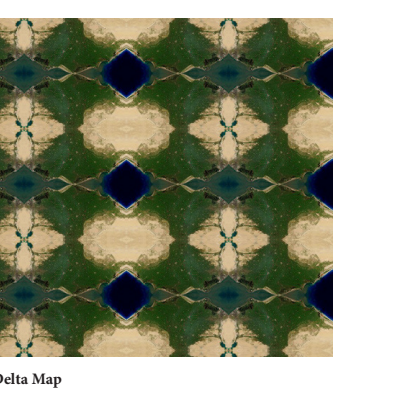
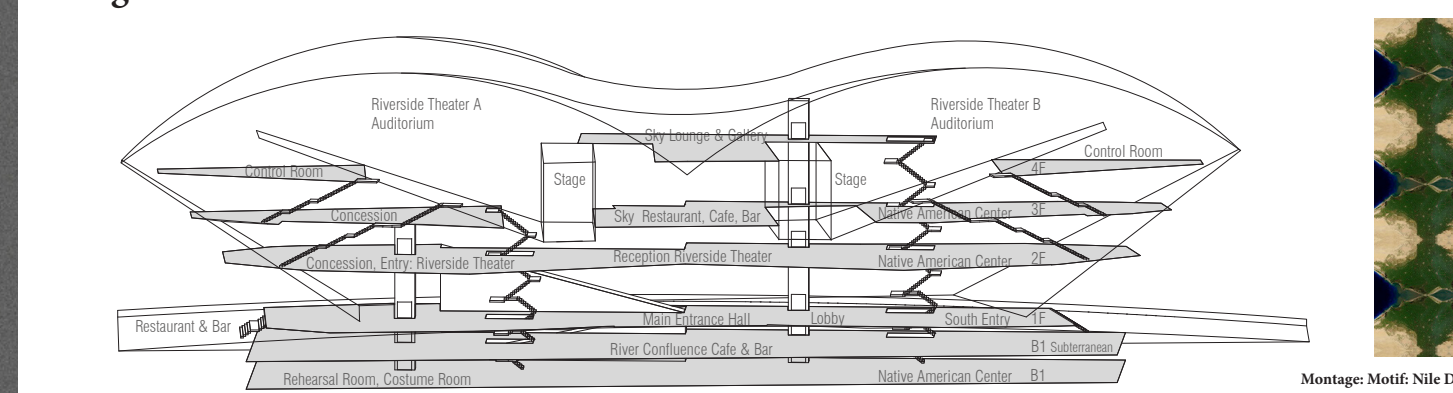
Mesh assembly: The exterior of the central gathering space is inspired by the optical art, giving a sense of the dynamics and illusion.
Structure: The radiant structures are supported by the vertical columns.



View from South at Santa Clara Street

The visual presence from the Santa Clara Street respects the Vietnam Memorial, the projection and staggering elements of the form of fanciful from the theory of the Indian temple is intended to establish a sense of the upward expansion.

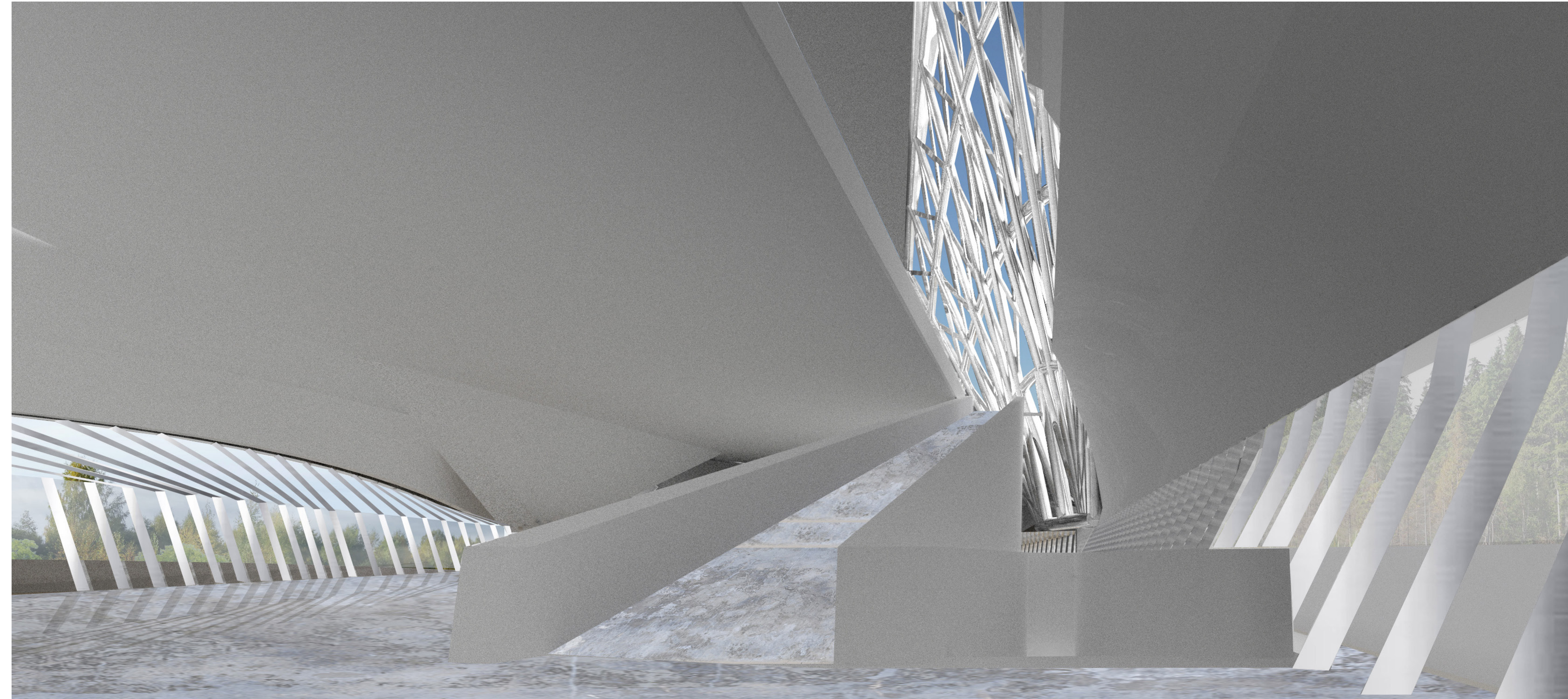
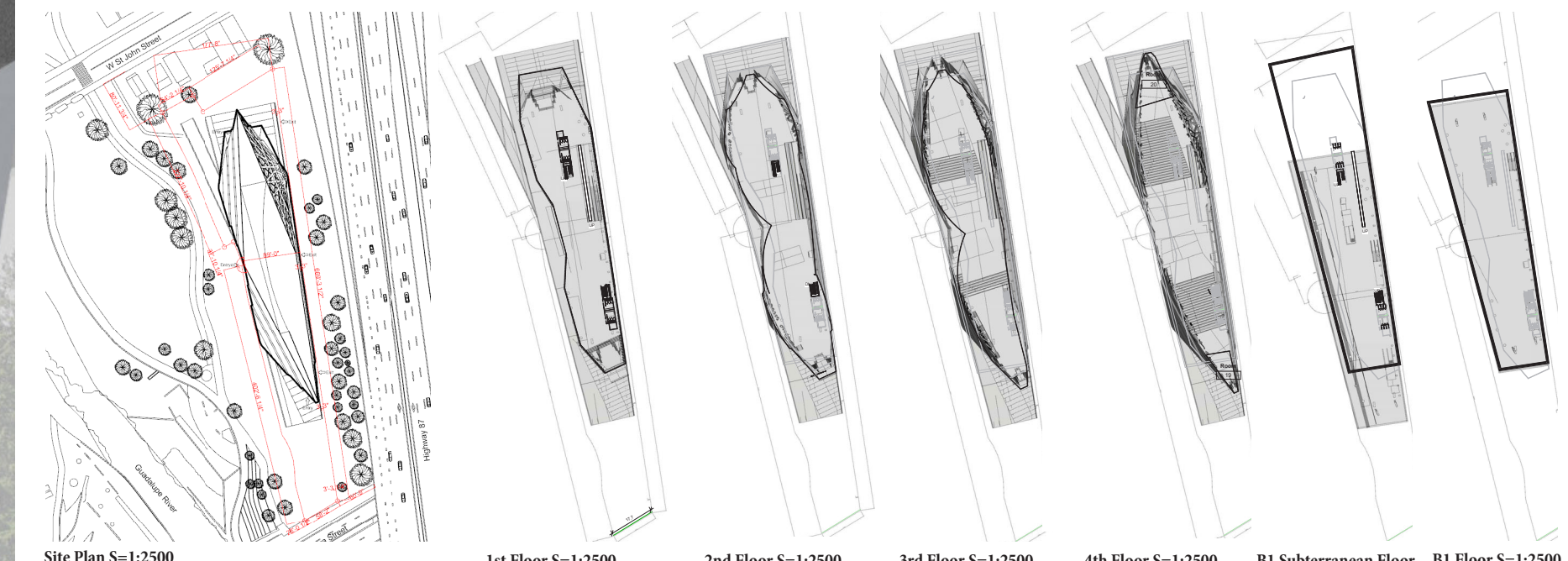
Program



Montage: Mont Niu Delta Map
 Montage of Niu Delta Map finds the line to shape the form of the exterior surface in between the form of the two fanfalls.

Composition

The composition is that the towers arrange the three radiation structures along the highway in the proposing site which is used for the existing tennis court of the Arena Green East. Two of them orient the Arena Green East, and shape the L structure toward the Confluence Point. The other exposes the structure itself toward the Highway which is intended to show the tectonics of a large tree in the park.



View of the Theater Promenade from Entrance Hall



View from Highway