

# Valley at the heart of San Jose

## Design Aspect

### Project Statement

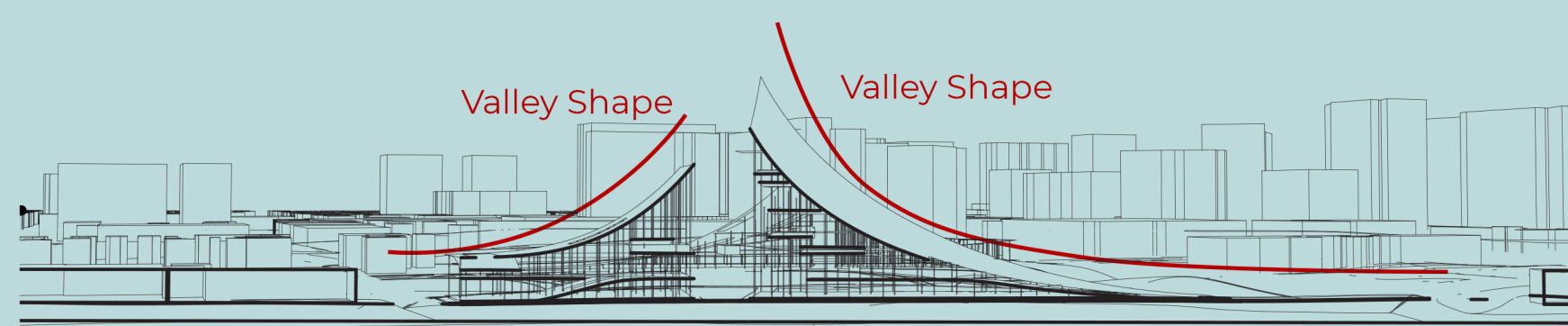
Manifesting the spirit of San Jose in the most recognizable way possible. Mine is a statement of purity, simplicity, and essence. It takes the most valuable aspect in both the history and geography of San Jose, the Valley of Heart's Delight, and giving it a form that grows from its surroundings. Grown into, not built upon the city: a continuation to San Jose.

The design follows a set of criteria:

- Platonic: directly representative of the natural shape of the valley using abstract surfaces. Almost imitating the Stonehenge in that it is definitely man-made but blends perfectly well with its natural surroundings.
- Facade-less: in that it welcomes visitors from all directions. A construction that doesn't have a face and a back. It faces San Jose.
- Seamless: blending perfectly well with the urban surroundings as it guides visitors in a series of rising platforms that ramp upwards and offer visual to the natural valley that borders San Jose, which is the true landmark.
- Iconic: in both shape and meaning, with its distinct 2 peaks that poke the horizontal skyline of San Jose and present a new recognizable iconic feature of the city.
- Public: a new feature in the heart of San Jose dedicated first and foremost for the people of San Jose, not only activating the previous "Arena Green" but also duplicating its area on top of each other and offering an area for potential commercial or mixed-use activity.

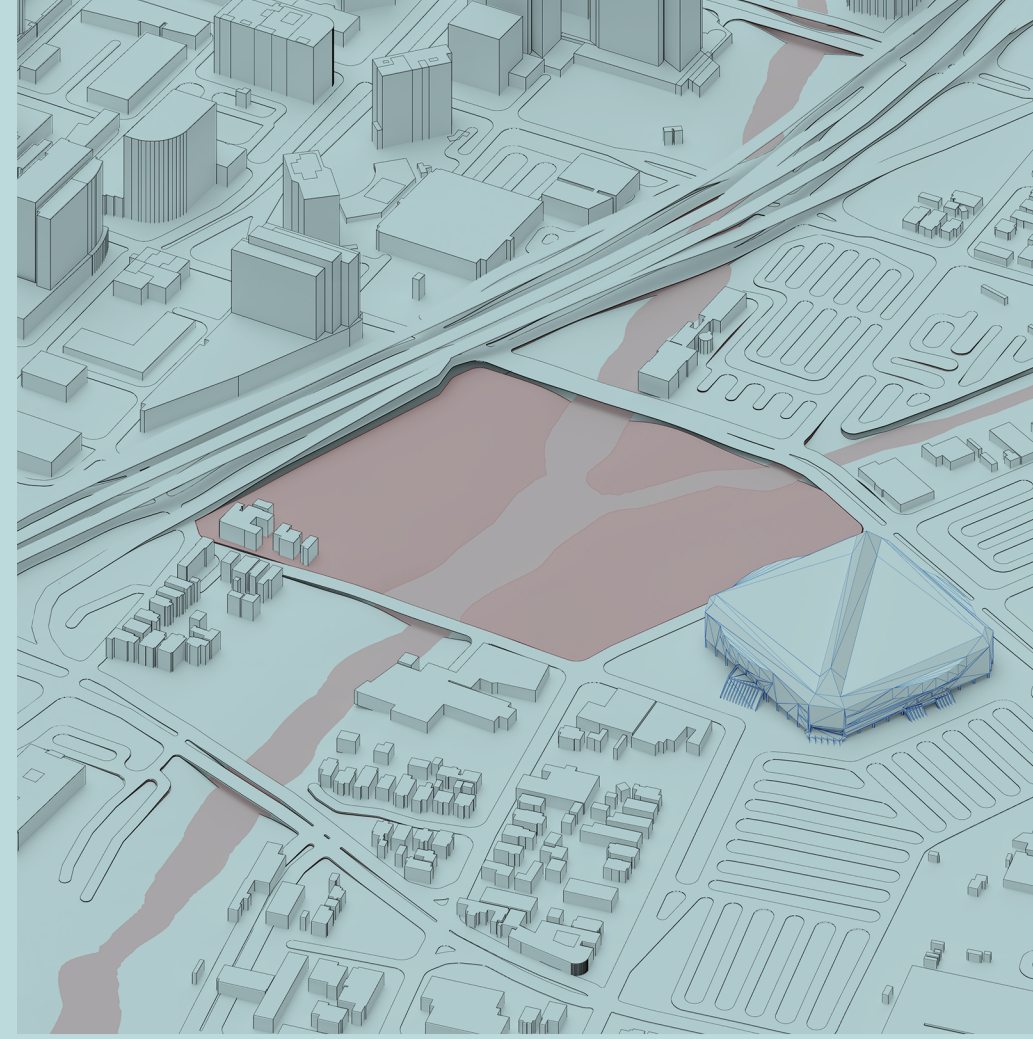
Of all the iconic monuments in the US, I found the Gateway Arch the most intriguing. While Lady Liberty is certainly more famous, to me "the Arch" is more "Usonian". Its form is driven from the history of St. Louis and secured the title of "the gateway between the east and the west" for its city. While maintaining an outstanding outline and an iconic shape inspired by the industry of its time. A truly wholesome monument.

Therefore, I opted to take guidance from Eero Saarinen's design and hope that my entry would be an addition to the city of San Jose and its people.



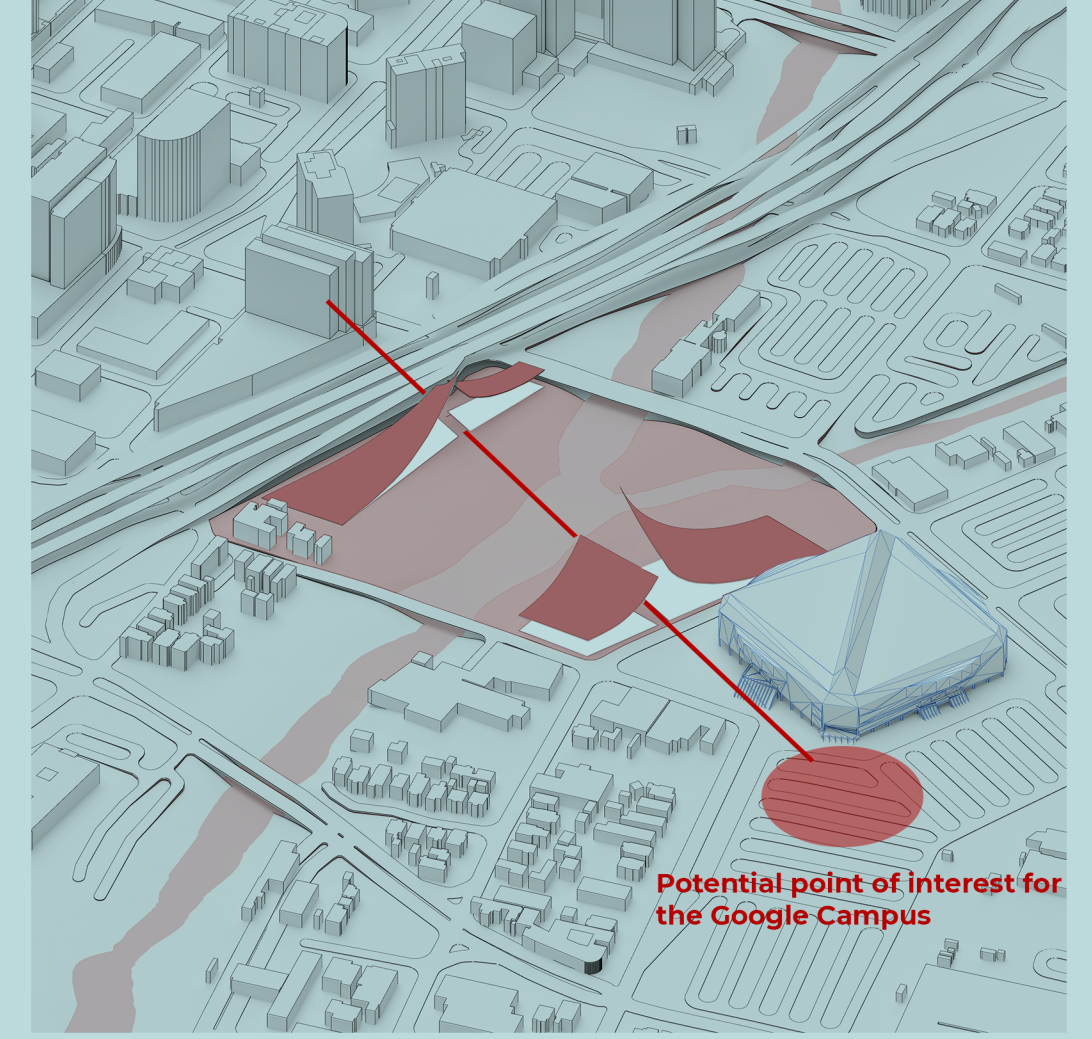
The shape of the valley offers interesting opportunities to create new experiences for the visitors and breaks the monotony of the horizontal skyline

### Project Formation



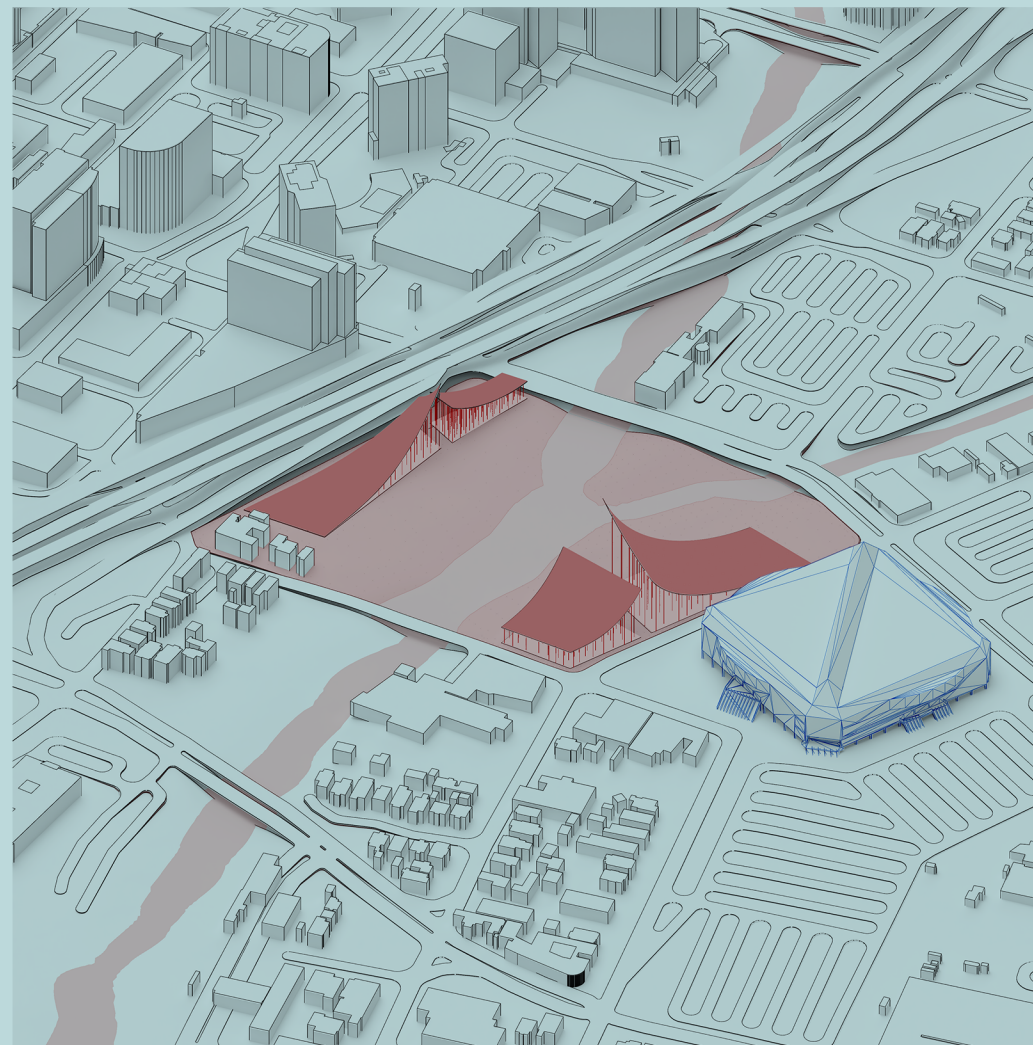
#### 01. Arena Green

Lies in the heart of the city and split between either sides of the confluence point. The project site offers an exciting opportunity for an urban scale change.



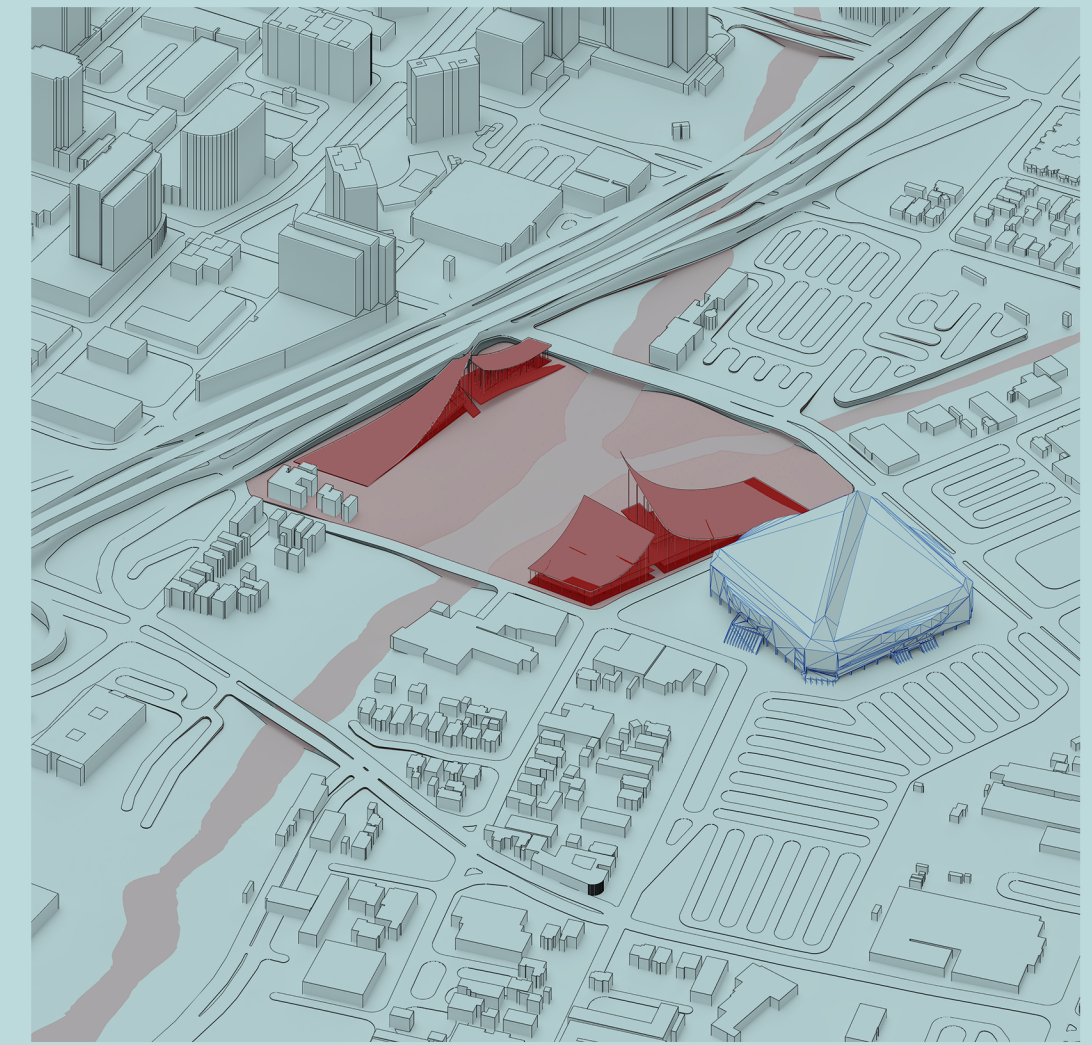
#### 02. Split and Fold

By outlining the average border of the buildable area then splitting the land with the axis that connects Arena Green with the an important Open Plaza in the master plan of the Google campus. This puts into consideration the future.



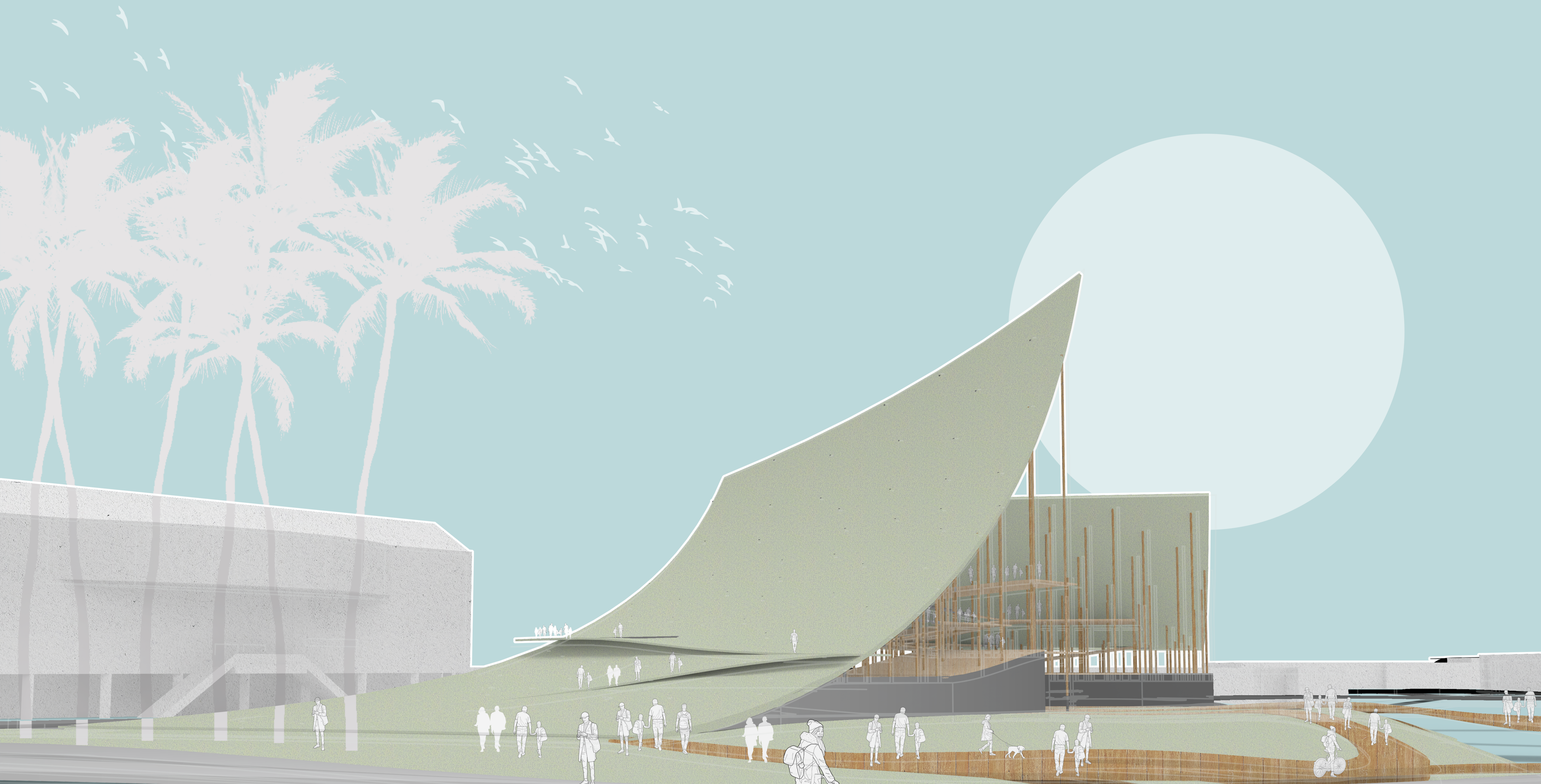
#### 03. Free Pilotis

Columns are then established in a free manner to harmonise with the nature and allow for the free forming surfaces to dance freely.



#### 04. Platforms

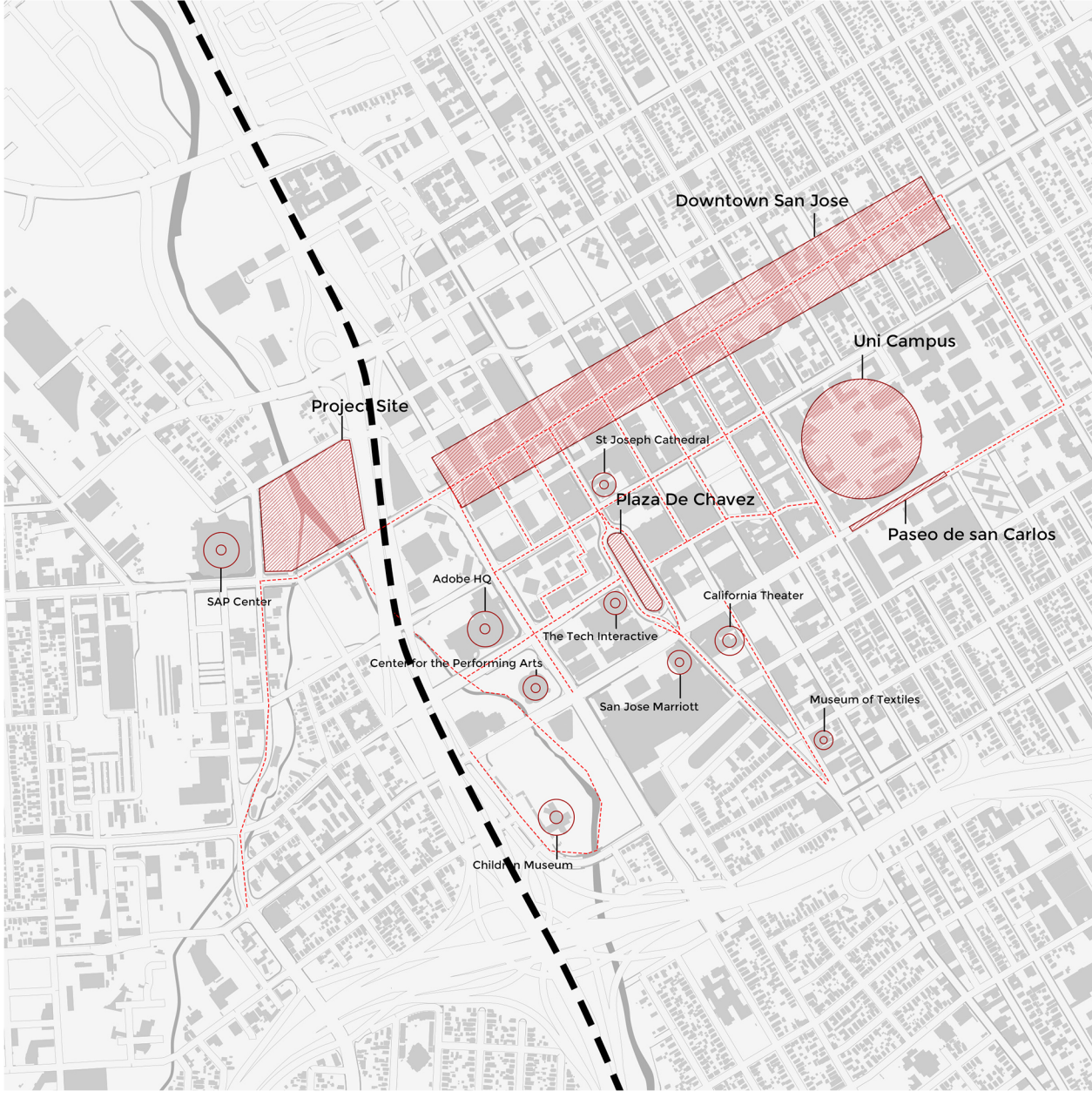
Series of platforms is created ramping upwards. No stairs are located in this project as the intent is to create a seamless experience with the urban surroundings.



# Valley at the heart of San Jose

## Urban Aspect

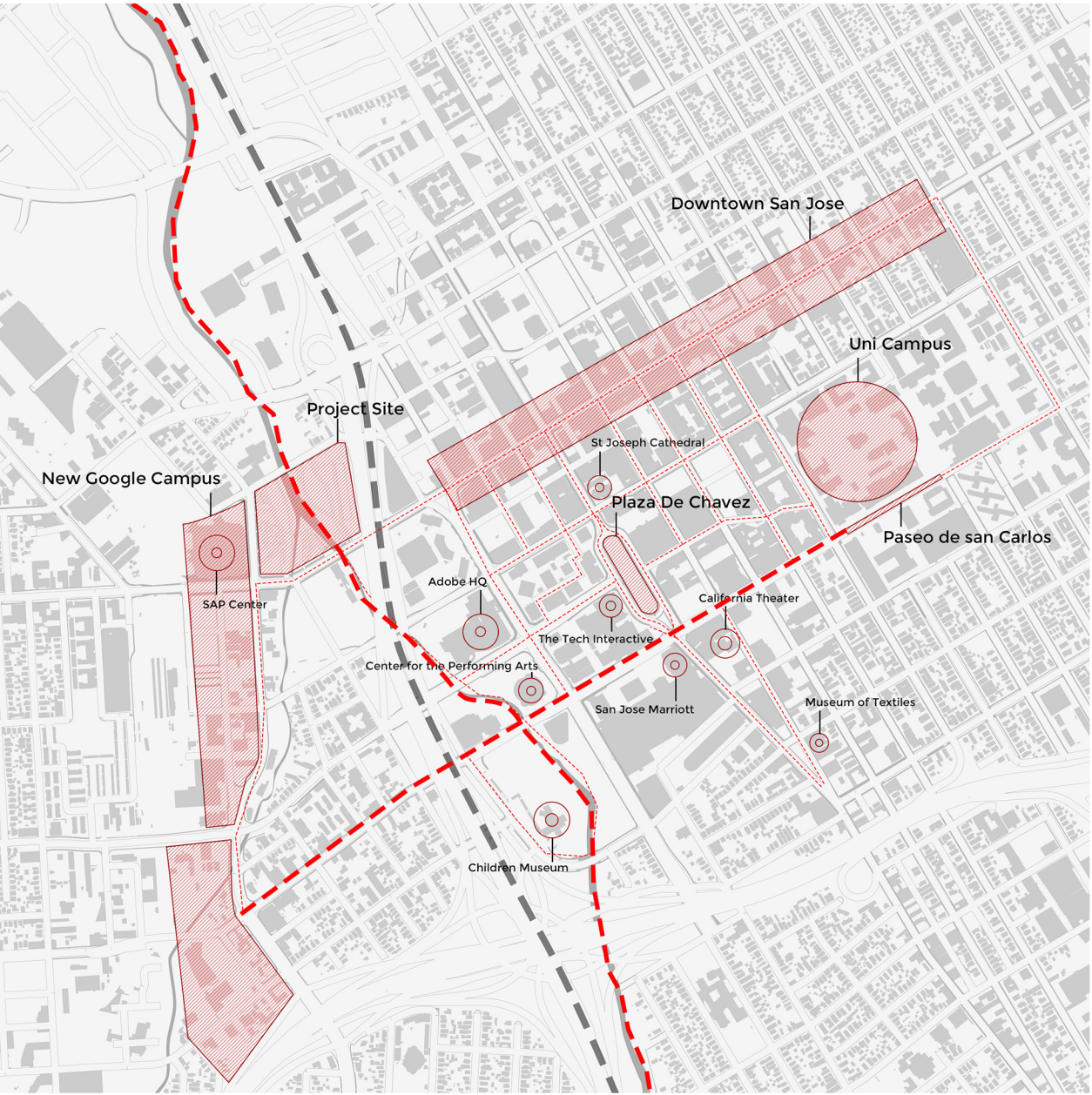
Importance of the new Google campus along side the new landmark



The Highway creates a visual obstacle that discourages visitors from navigating from the east to the west side of the bridge. This is more prominent due to the concentration of the points of interest on the east rather than the west.

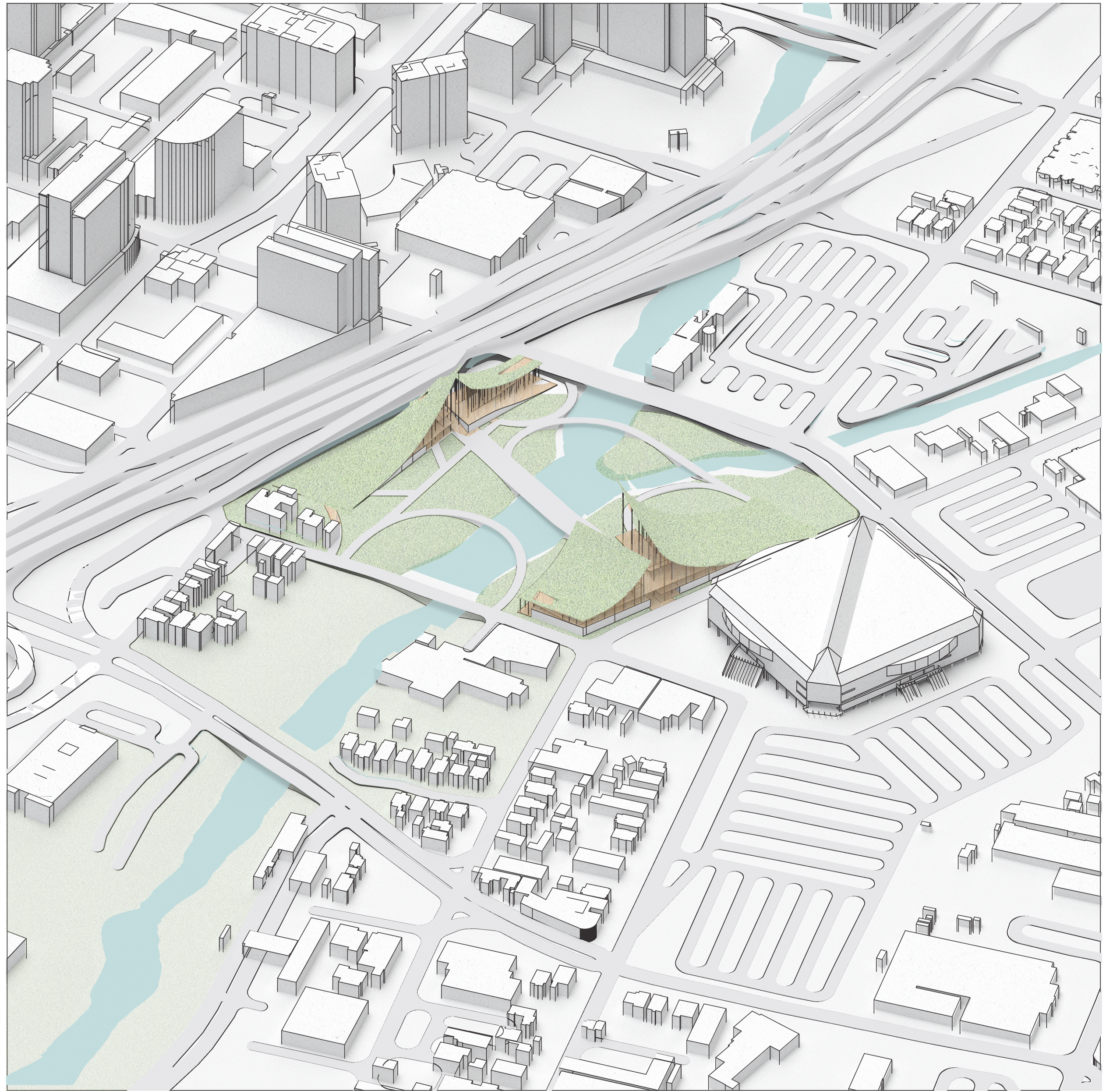


Therefore it's crucial for the project to consider the location of the future Google Campus and its urban elements to attract people more towards Arena Green.



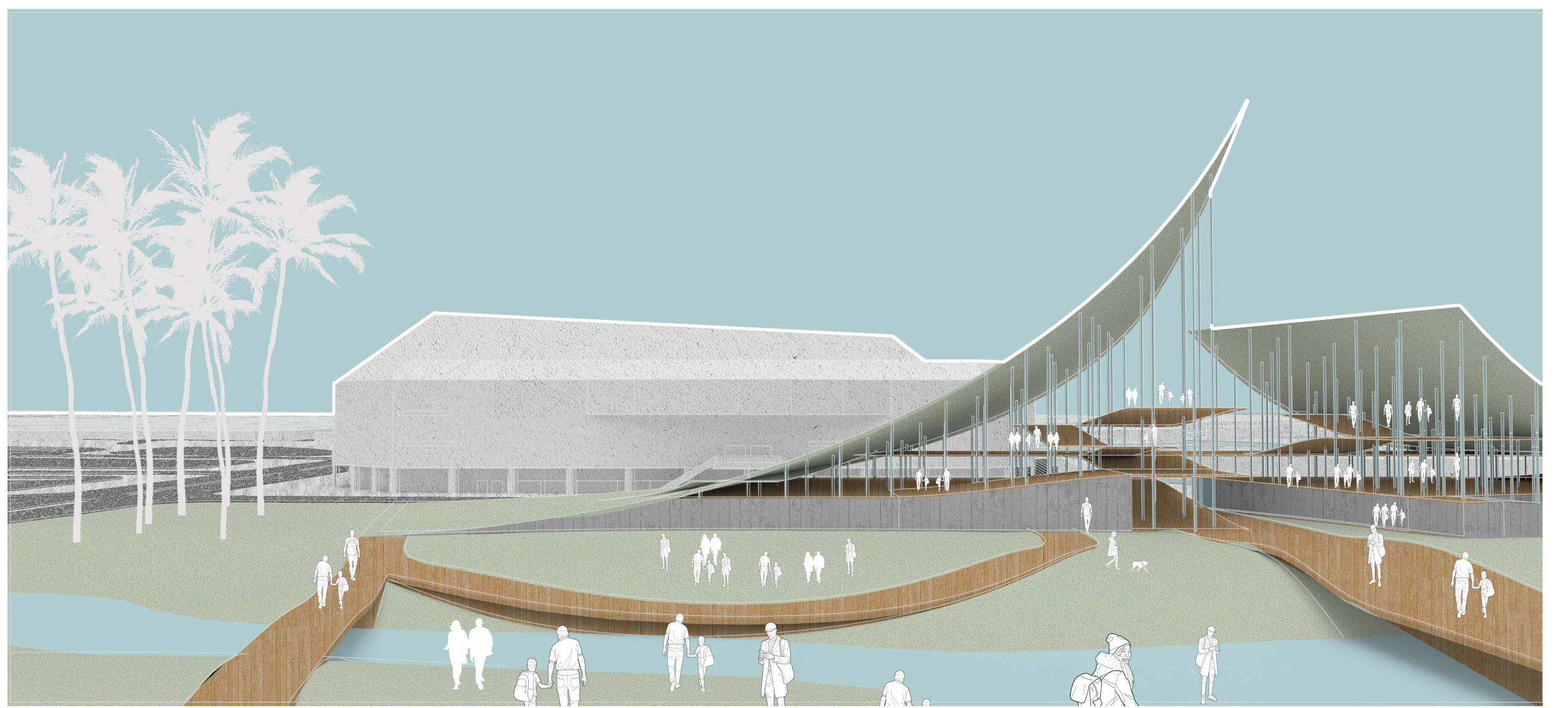
The combined force of these two future installments would certainly activate the middle strip where Arena Green lies.

Rising upwards from the earth the project resembles a tear in land of San Jose that represents the shape of the valley



Similar to the Stonehenge the land mark is both platonic and natural as it blends with the surroundings and opens up to the open space beside Arena Green

## Platonic + Natural



The collection of both paths and surfaces offers a visual theater that breaks the horizontal nature of San Jose Skyline.

