

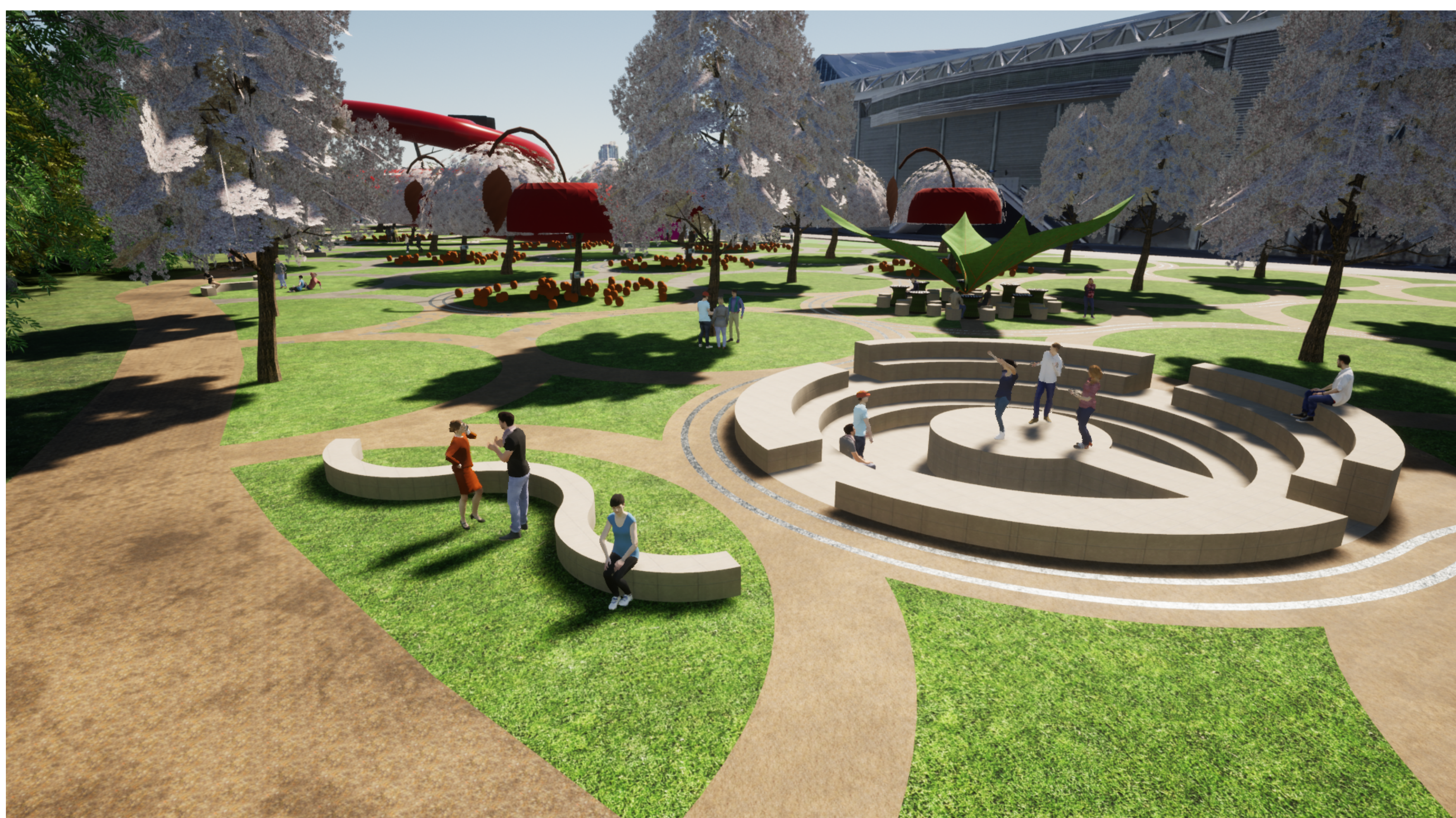
## Connectivity Park

For nearly 200 years San Jose has been deep-rooted in farming with many of the developed streets and building names harkening back to its early days. It's from these days of farmland that we developed our concept of farmland taking root through a system of irrigation and grove tree layouts to today's world technology grid patterns and how the new structure integrates and also takes its roots from the grove trees.

The Valley of the Heart's Delight has long been an area where pioneers forge a new way of life for themselves from the Ohlone Native Americans through today's technology innovators. San Jose was established in 1777 to bring agriculture to the Alta County territory, since that time this area has long been creating and cultivating a history of grids, patterns and networks that have metamorphosized through trolley and street gridiron to today's network of wiring and communication.

This area is ever changing and on the move. The goal in our design is to show the connection of beginnings of the city and lifestyle and the development of the city into the thriving network of people, data resource and technology industry San Jose has become today. The intent of the design is to show the growth of the area through the use of a 2-dimensional and 3-dimensional grid pattern that was formed during the agricultural development and how this transforms into today's circuitry grid pattern.

There will be three different historic Zones mapping out San Jose's historic growth. The 2-dimensional grid pattern will be formed by pathways each with different patterns having historical meaning. The 3-dimensional grid system pattern takes on a vertical element that relates to the history of the zone tying in with the 2-dimensional pattern. Each zone has an opportunity to bring the community together and teach the history of San Jose by having games, activities, interactive devices, wifi, community seating, historical facts and spaces for yoga, dancing and performances. Our hope is there is a place here for everyone to get to know more about local history, local companies as well as meet up and spend time connecting in person.



### STRUCTURE DIMENSIONS

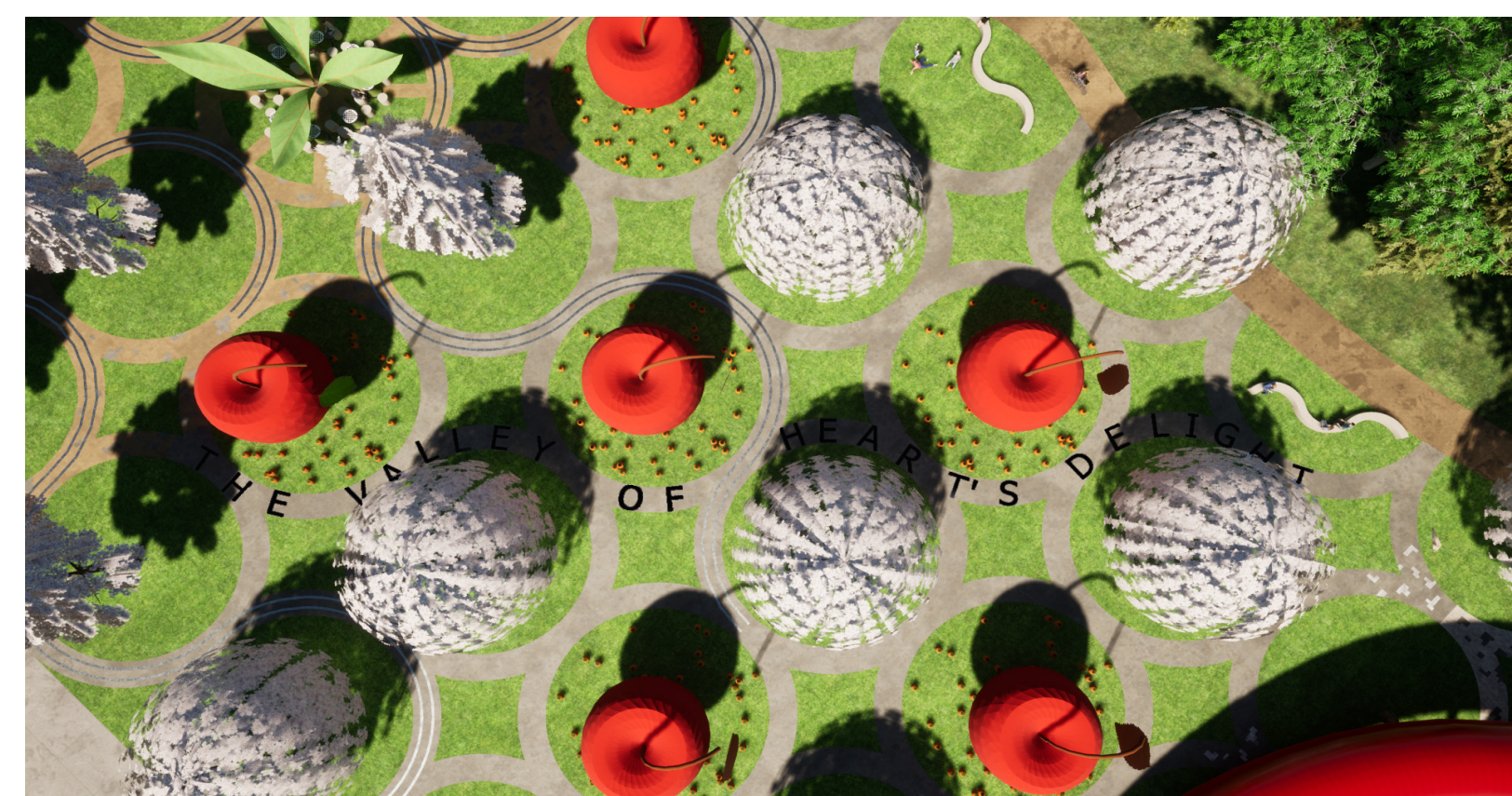
Height: 60'

Length: 300'

Width: 15'



Connectivity Bus Stop



Valley of the Hearts Delight written in pathway.

The grid system begins in Zone 1 starting with a pattern representing the Coming of Age on a pathway around a grove of cherry trees with activities and historic facts nestled throughout the Zone. This leads you into Zone 2 which represents a progression of San Jose which leads the pathways to become more structured with interactive activities throughout the Zone such as QR codes on digitized cherries revealing local companies. Lastly, Zone 3 represents the birth of technology. The pathway is a circuitry grid pattern followed by a USB ramping structure forming a bridge to the future.



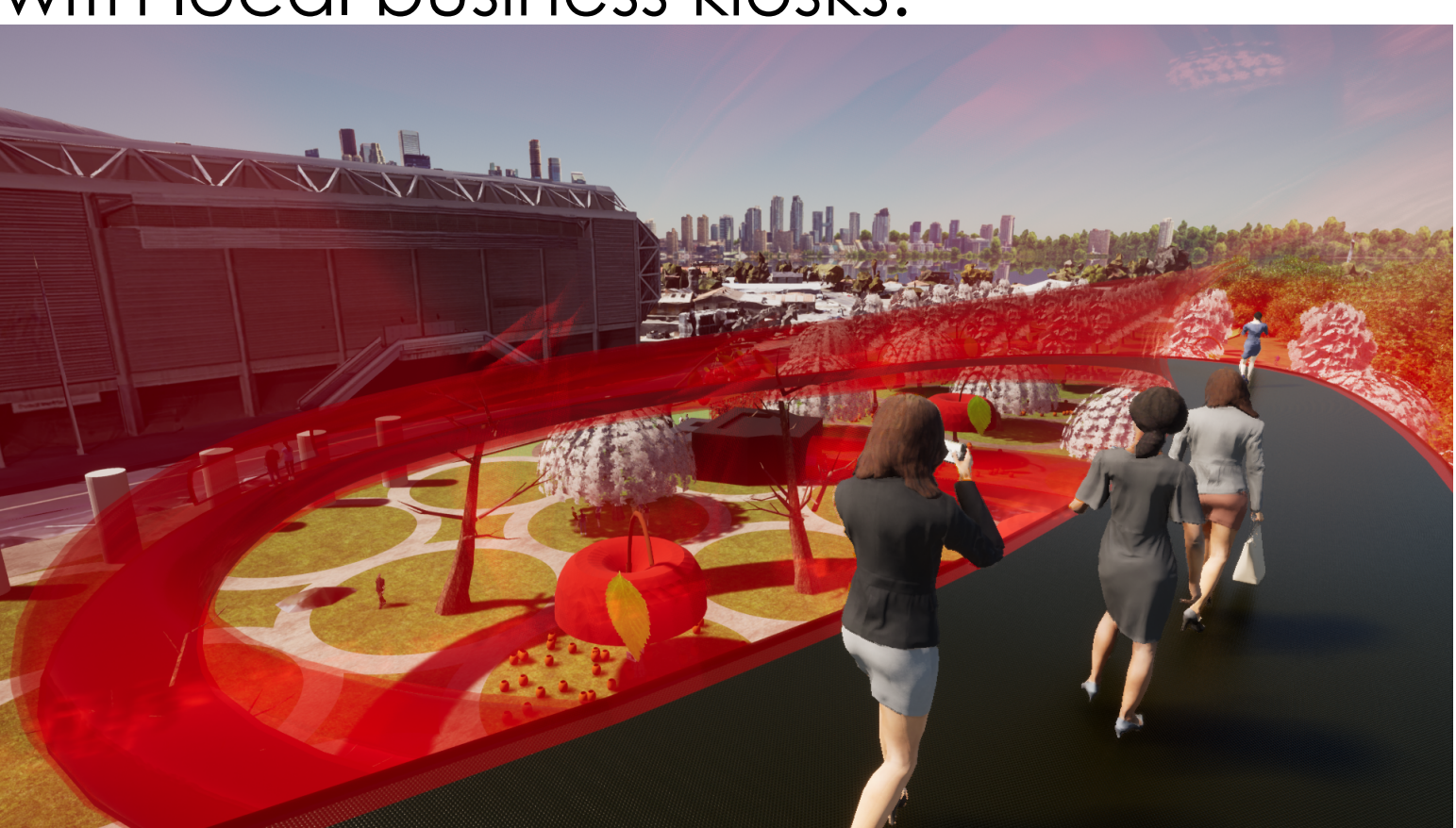
Connectivity gathering spots with local business kiosks.



Entrance to the History Structure.



View from the past to the future skyway.



A Walk through History



Park area including activities such as chess and picnic areas with leaf canopies. This picture also demonstrates the railway system coming through the mid 1800s of the pathways.



Night lighting on future connectivity device.



View from History bridge to the ice skaters monuments.