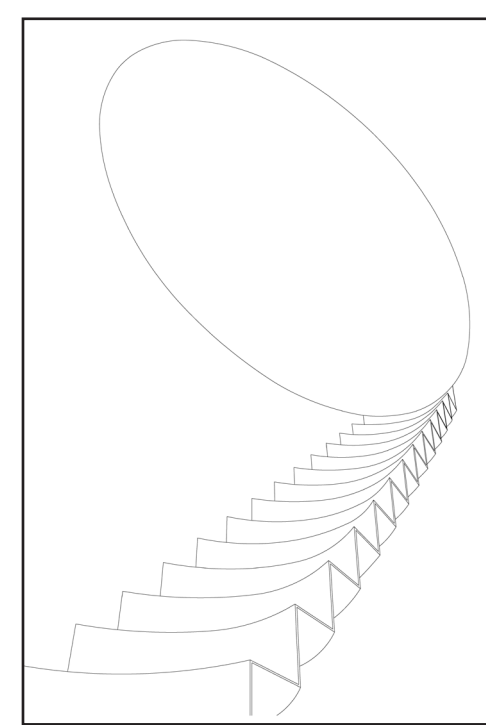




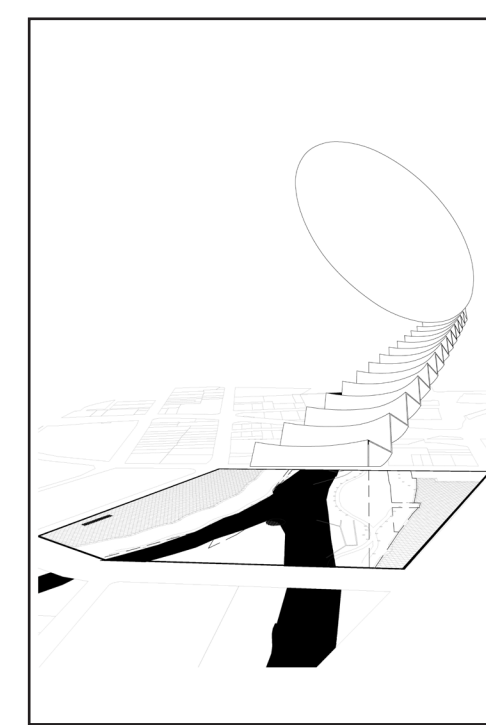
Our proposal is built around the central theme of collective thinking, connection and living together, which we believe are the core values at Silicon Valley. Our age of new frontiers and creative minds demands architecture that responds to enhancement of public awareness to those values, social equilibrium and democratic space, creating new apertures to the synthesis of Silicon Valley. We want to bring to San Jose downtown an architectural narrative about an organic-endemic public realm as told through the story of a programmed landscape.



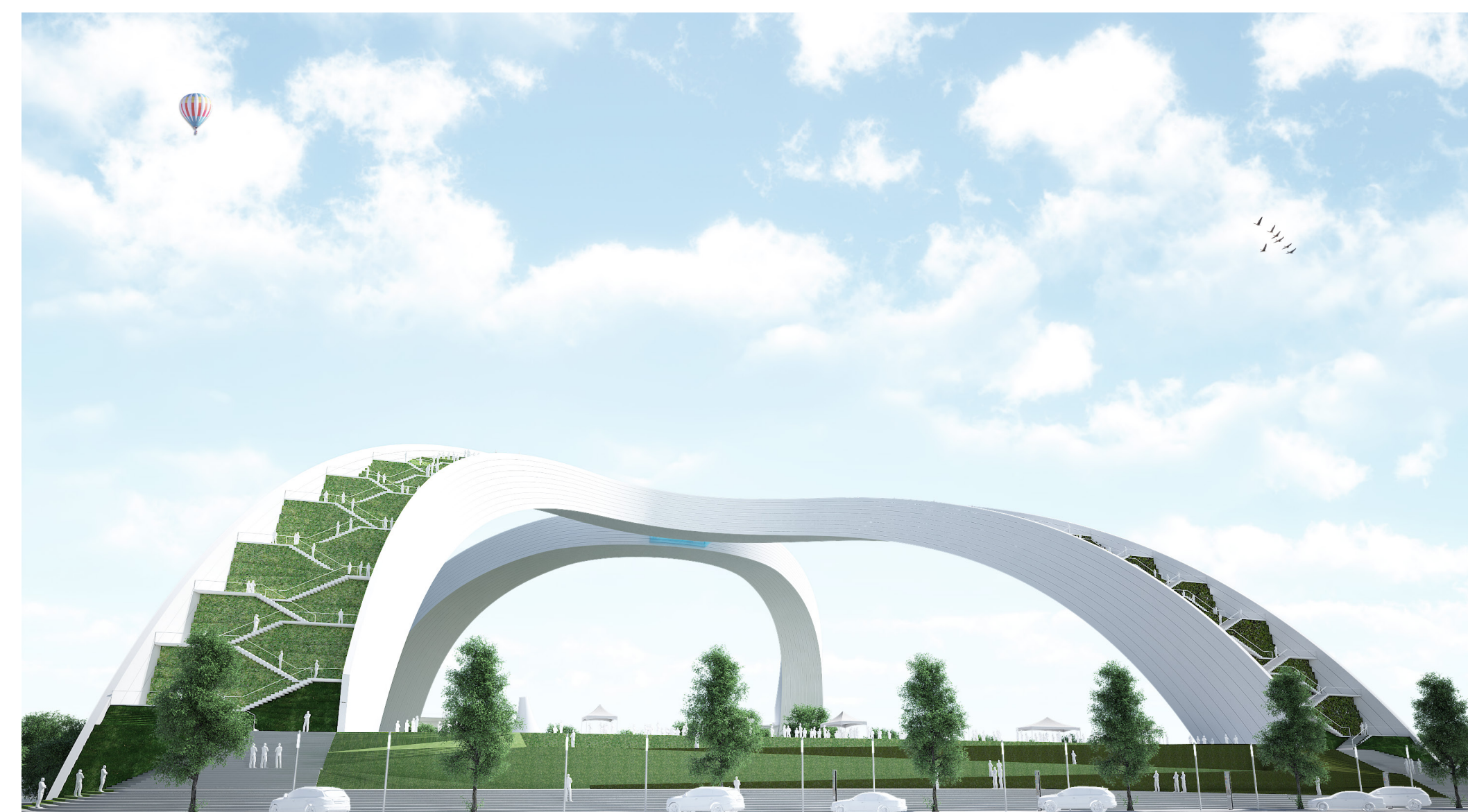
"Roden Crater" installation by artist James Turrell



Raising steps toward new horizon



Collage of raising steps over proposed site



On Ground: Engage

The new "Urban Plaza" mediates between the pressure of the city and the sanctity of site. The Icon offers a buffer zone to the public with a series of event spaces, steps & ramps in landscape welcoming them for their engagements with the programs.



On Top: Exchange

"Hyper Platform" endows a new horizon for people. The platform offers to uncover the hidden possibilities of urban & community activities in a new dimension.

The bold gesture of stepping to sky, is inspired by the steps of "Roden Crater" installation by artist James Turrell. The raising steps are analogy for collective thinking, connection & living together at Silicon Valley as a social, "third place", that celebrates openness and encourages public engagement and social connection.

Glass Bridge | Structural Glazing

New Horizon
Connecting Hyper Platforms

Programmed landscape | Local plants & materials

Net Zero Water

Rainwater Collecting Landscape
Use Rainwater to Irrigate Landscape
Native Landscaping

Net Zero Energy

Thermal Hybrid Cells Over Landscape
Day: Supply CCD With Electricity
Night: Reject Heat to Sky

Footfall Energy

Micro Climate
Restore Stormwater by Allowing Infiltration
Provide Good Air Quality on Each Path

Cladding | Off-White Ceramic

Durable
Maintenance-Free
Zero Heat Island Effect

Structure | Bead Blasted Stainless Steel

Durable
Maintenance-Free

Elevator Hoistway | Stainless Steel Frame

Durable
Maintenance-Free

Visitor Center | Glazing Façade & Native Landscaping

High Performance Façade
Landscape as Thermal Mass
Noise Barrier Next to Highway

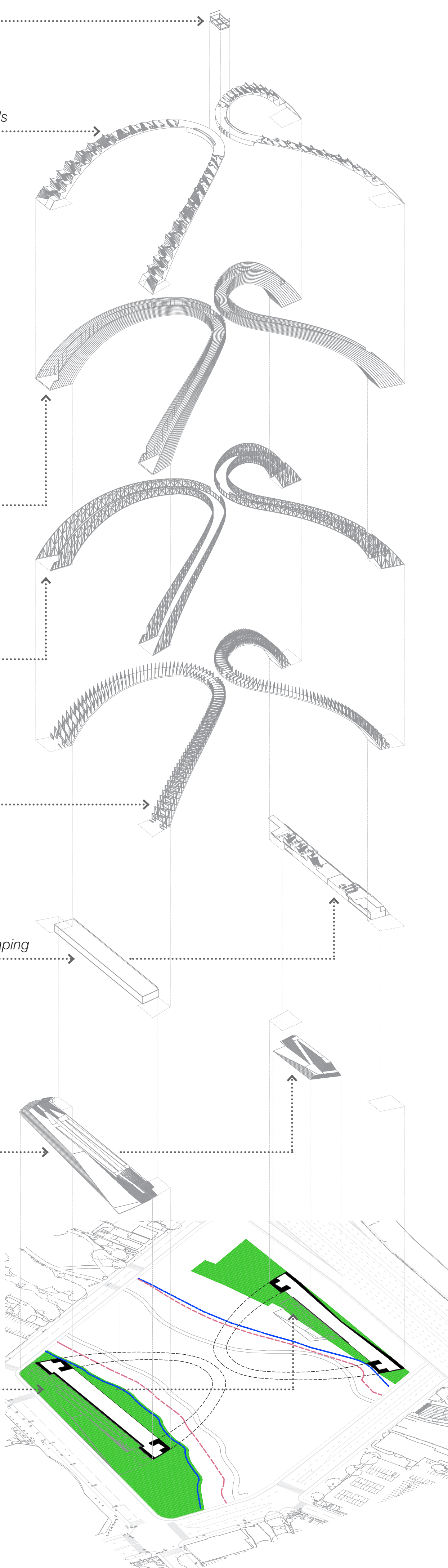
Ramp & Plaza | Native Plants & Local Materials

Enhancement of Visitor Experience
Site Activation

Site Boundary | Footprint of New Icon

Black: Icon Footprint
Green: Competition Design Area
Blue: 100 feet Riparian Setback
Red: S.C.V.W.D Setback

Elements



Educational Landscape: with urban farming and public activities, the current and future generations can learn, live and share together.

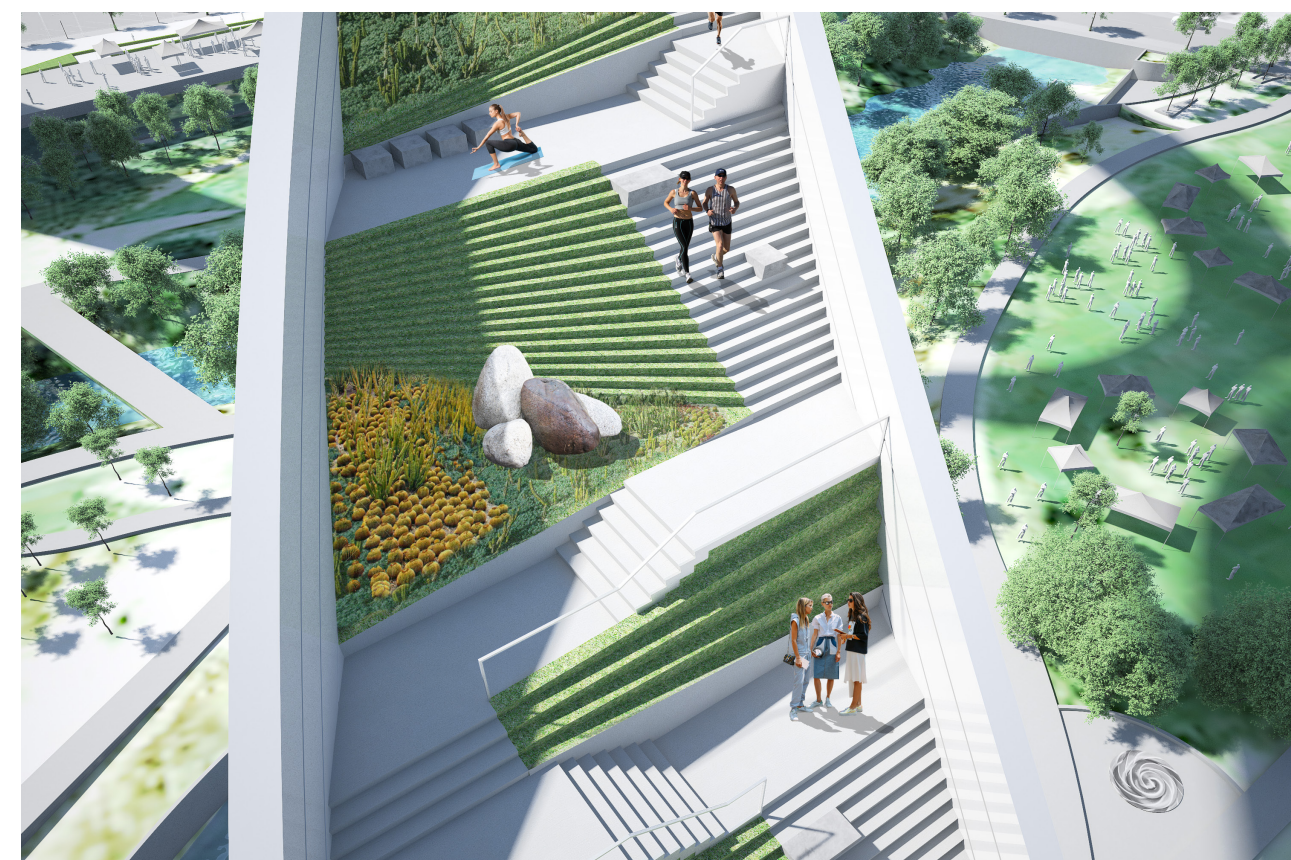


Entertainment Landscape: breath, relax and release; with landing that welcomes all age activities and social needs.



Expositional Landscape: a platform continuously develops & promotes the conversation between artist /creative minds and new audiences.

Endemic Landscape: with remarkable & unique native plants; encouraging public & athletics to push their limits by work out on the enriched path.

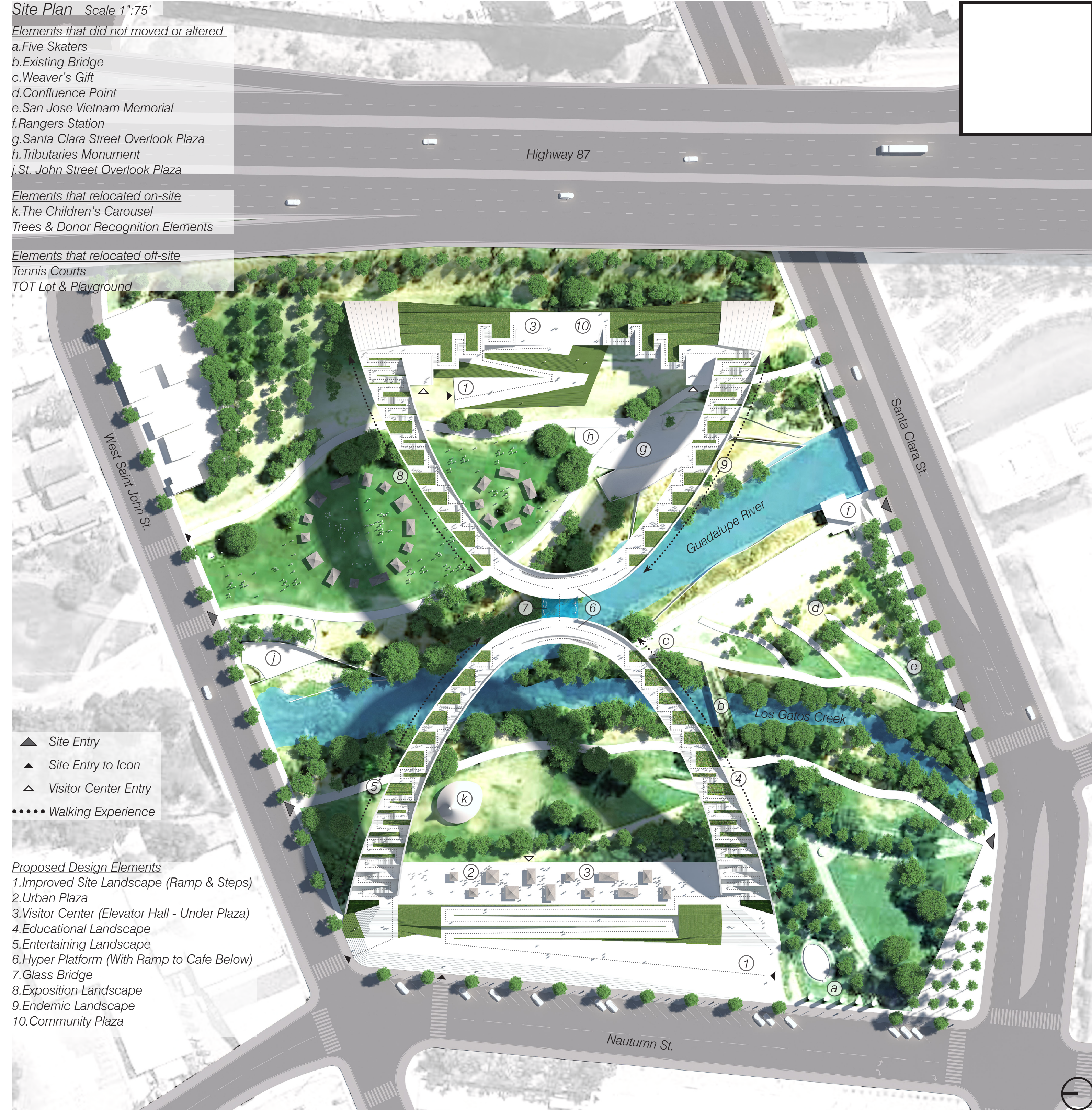


Site Plan Scale 1":75'

- Elements that did not moved or altered
- a. Five Skaters
 - b. Existing Bridge
 - c. Weaver's Gift
 - d. Confluence Point
 - e. San Jose Vietnam Memorial
 - f. Rangers Station
 - g. Santa Clara Street Overlook Plaza
 - h. Tributaries Monument
 - i. St. John Street Overlook Plaza

- Elements that relocated on-site
- k. The Children's Carousel
 - Trees & Donor Recognition Elements

- Elements that relocated off-site
- Tennis Courts
 - TOT Lot & Playground



Proposed Design Elements

1. Improved Site Landscape (Ramp & Steps)
2. Urban Plaza
3. Visitor Center (Elevator Hall - Under Plaza)
4. Educational Landscape
5. Entertaining Landscape
6. Hyper Platform (With Ramp to Cafe Below)
7. Glass Bridge
8. Exposition Landscape
9. Endemic Landscape
10. Community Plaza

To materialize the concept, we proposed four programmed landscapes that represent the values of Silicon Valley: Educational landscape, Entertainment landscape, Exposition landscape & Endemic landscape.

Nauturn St. Elevation Scale 1":75'

