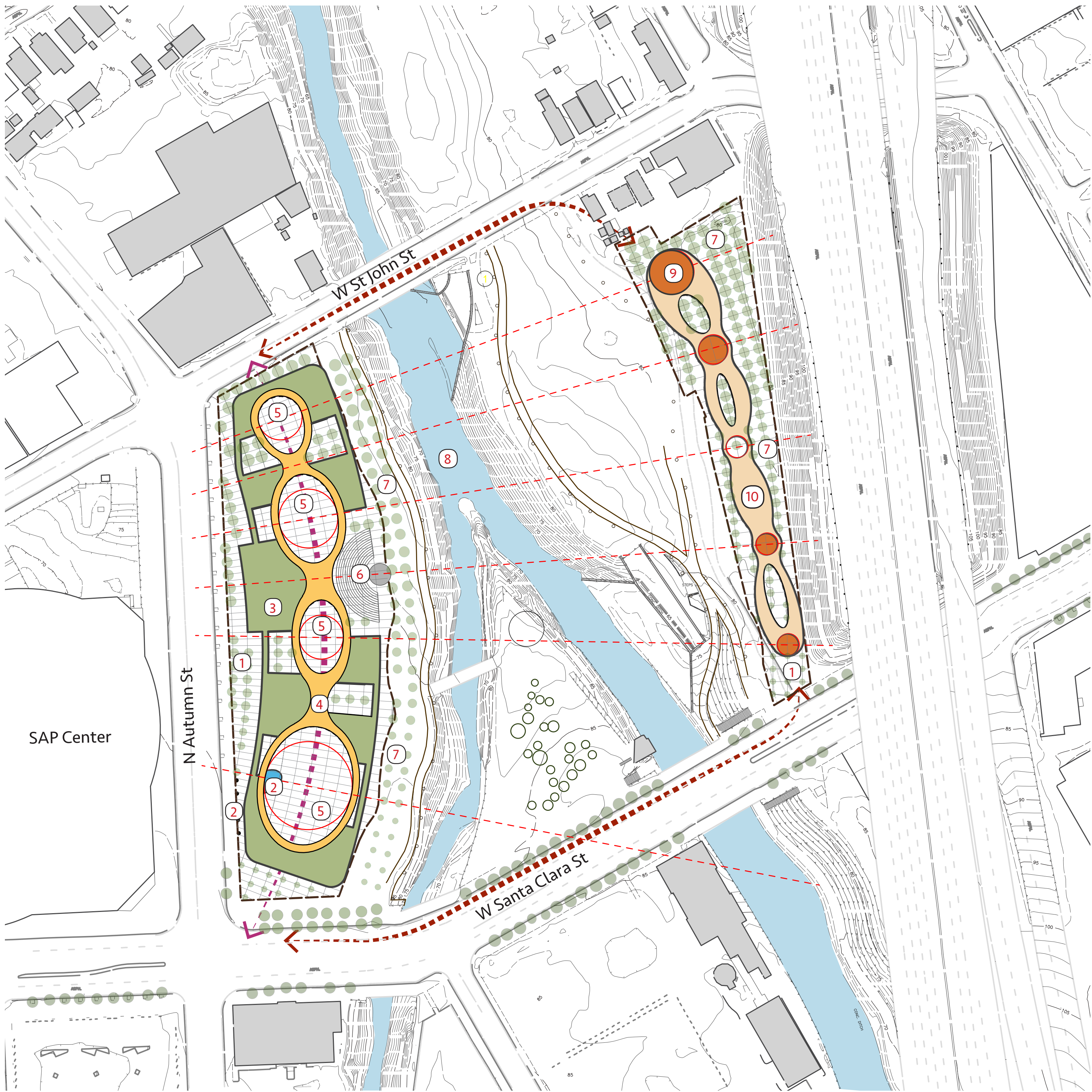
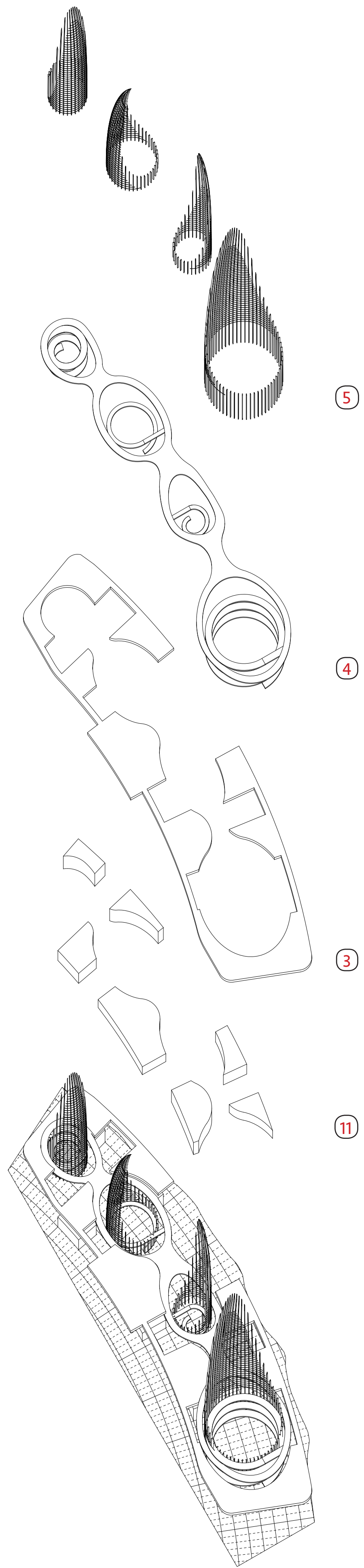
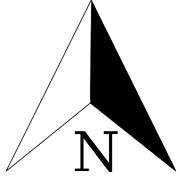


**PROJECT STATEMENT:**

Our design proposes a multi-layered approach for the site consisting of several major elements. The site is first over-layed with an organizing grid that defines the elements. On the ground floor a series of support facilities, cafe and restaurants are carved out of the organizing grid to activate the site on the street level. Four sculptural tower elements are then placed on the site that relate visual across to the river to tower elements on the other side, and define the site as a visual monument. These towers are then wrapped with an elevated walkway and roof garden to create an enjoyable space above the urban street fabric to be enjoyed by visitors and residents.



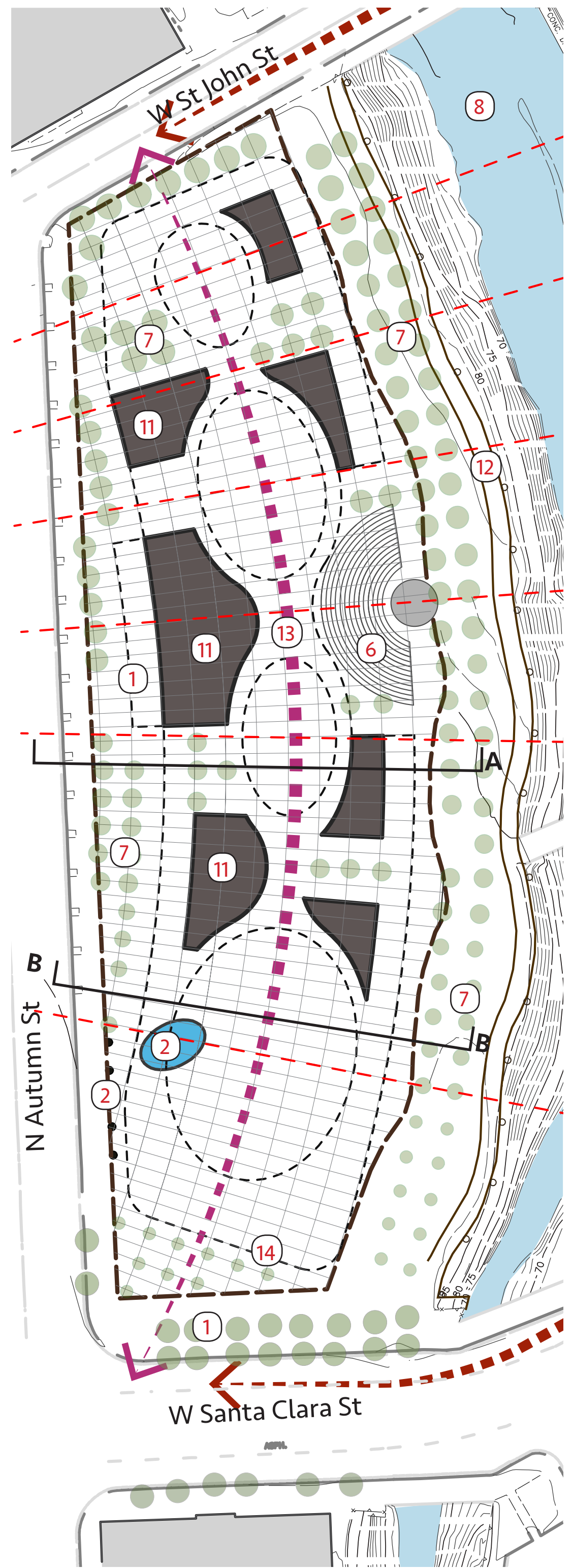
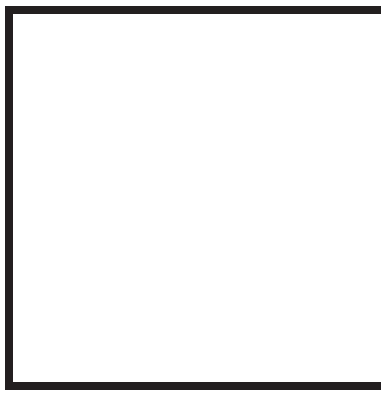
**SITE PLAN**



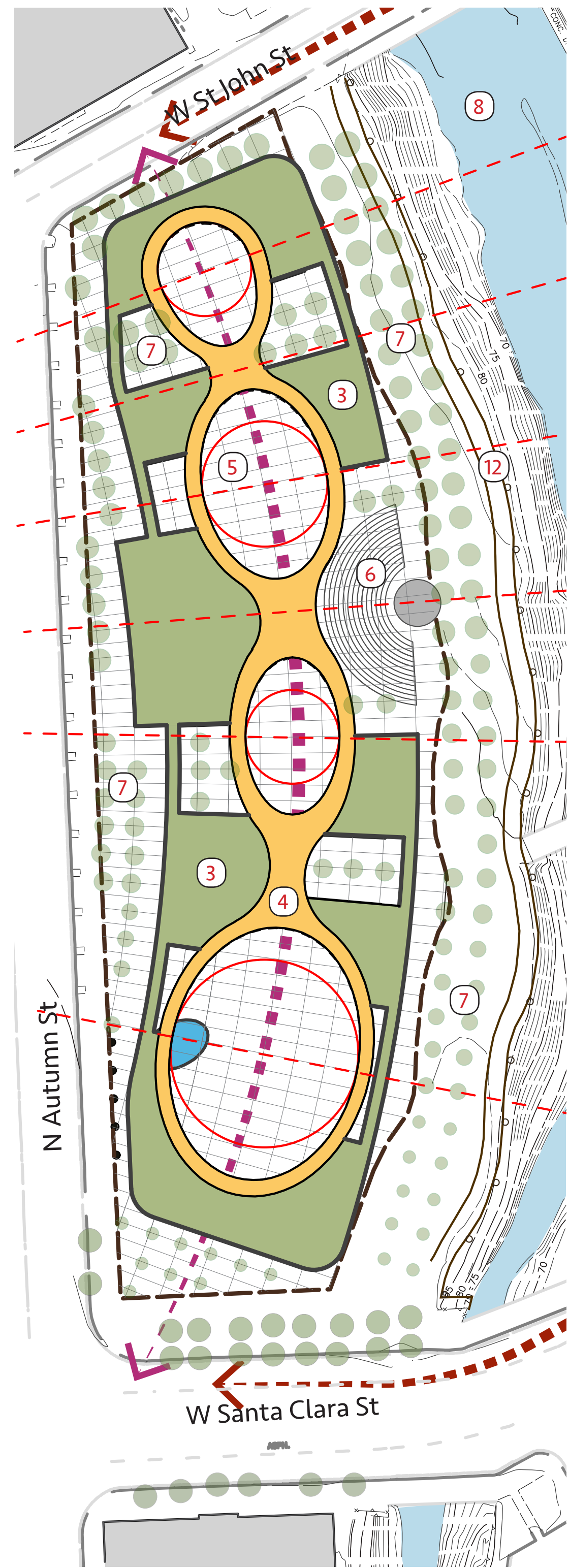
**LEGEND**

- 1 Entry Plaza
- 2 Pond and Monument to stay
- 3 Accessible Roof Garden
- 4 Elevated Walkway
- 5 Tower
- 6 Amphitheater
- 7 Orchard
- 8 Guadalupe River
- 9 Tower - Small
- 10 Covered Canopy
- 11 Support Facilities + Cafe and Restaurants
- 12 Existing Walkway
- 13 Central Spine for circulation
- 14 Line of Roof Above

**AXON DIAGRAM**



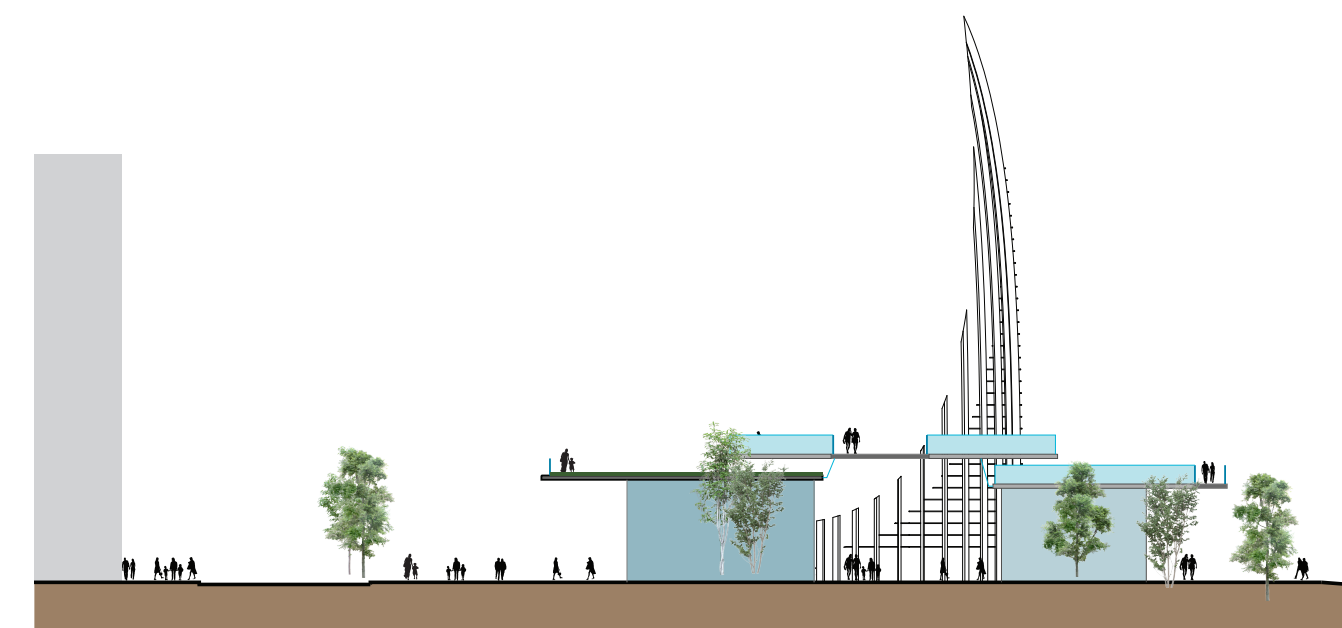
**PLAN - LEVEL 1**



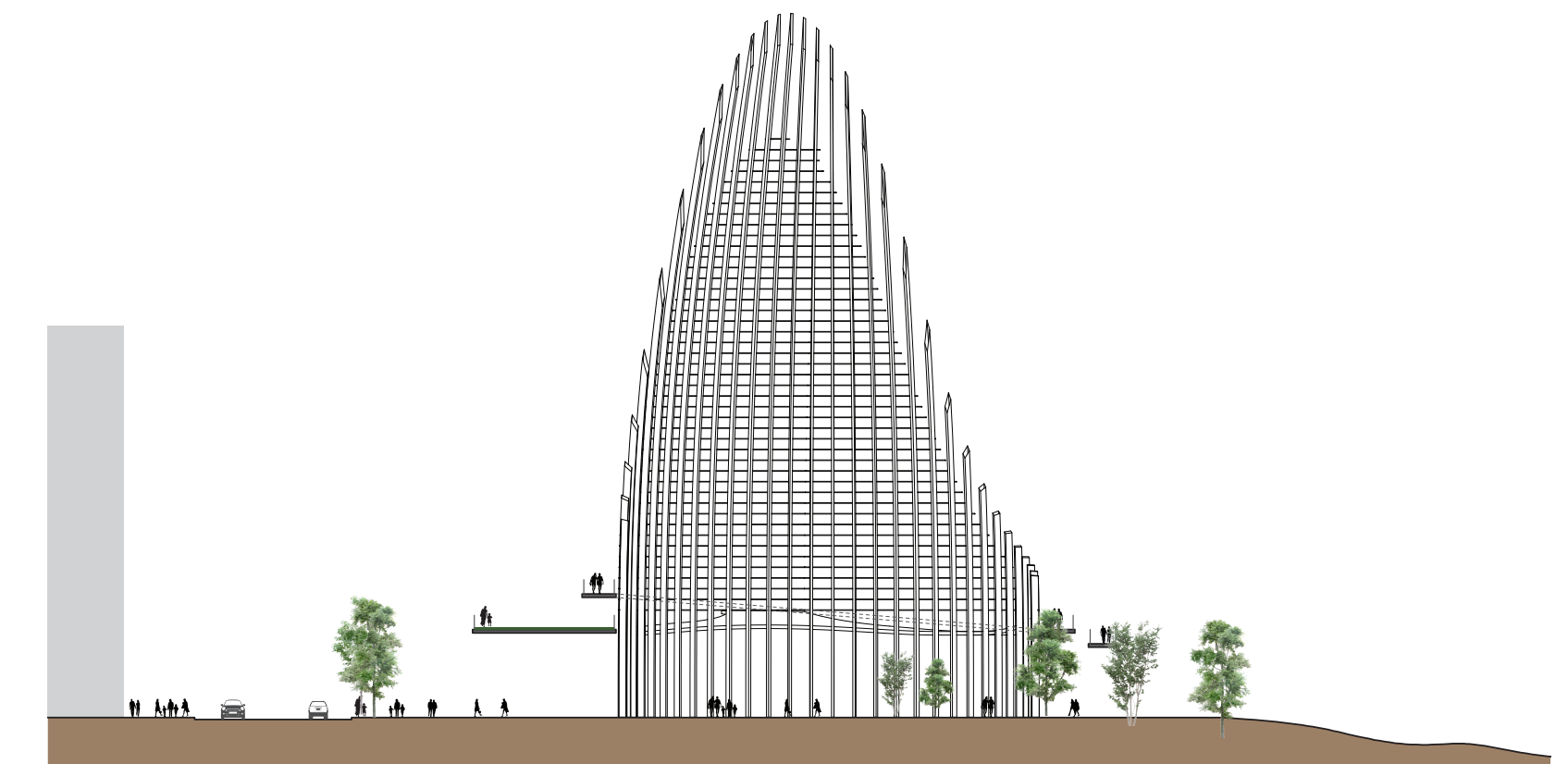
**PLAN - ROOF**

**LEGEND**

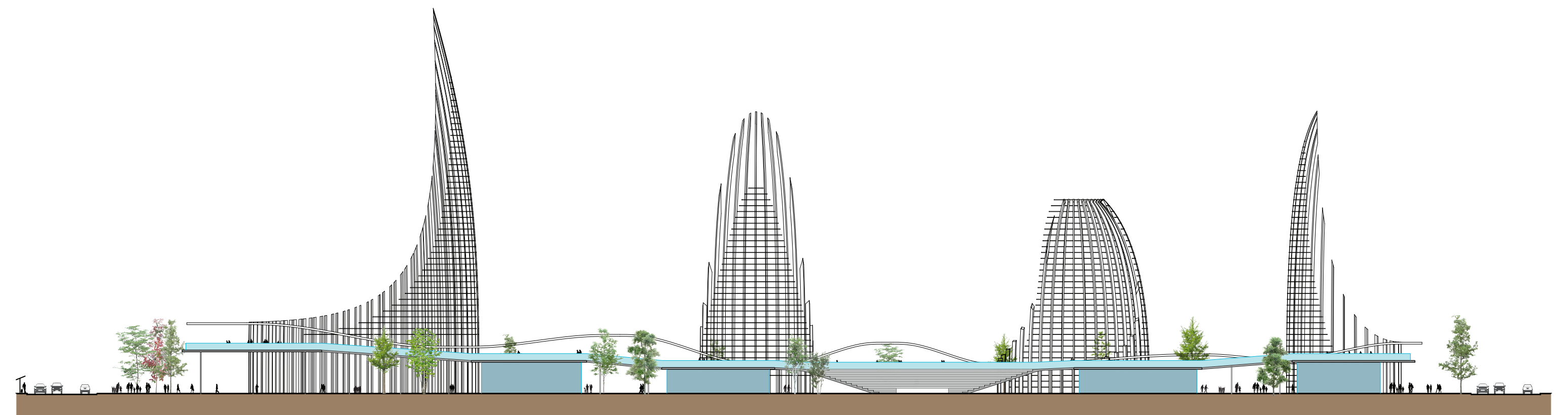
- 1 Entry Plaza
- 2 Pond and Monument to stay
- 3 Accessible Roof Garden
- 4 Elevated Walkway
- 5 Tower
- 6 Amphitheatre
- 7 Orchard
- 8 Guadalupe River
- 9 Tower - Small
- 10 Coverd Canopy
- 11 Support Facilities + Cafe and Restaurants
- 12 Existing Walkway
- 13 Central Spine for circulation
- 14 Line of Roof Above



**SECTION - AA**



**SECTION - BB**



**ELEVATION - EAST**