

ECHO

A SILICON VALLEY ICON

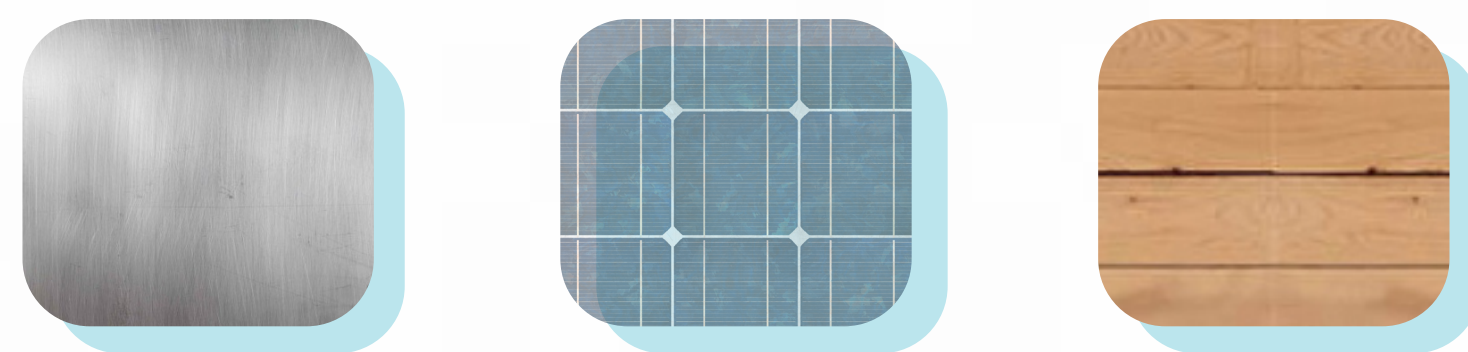
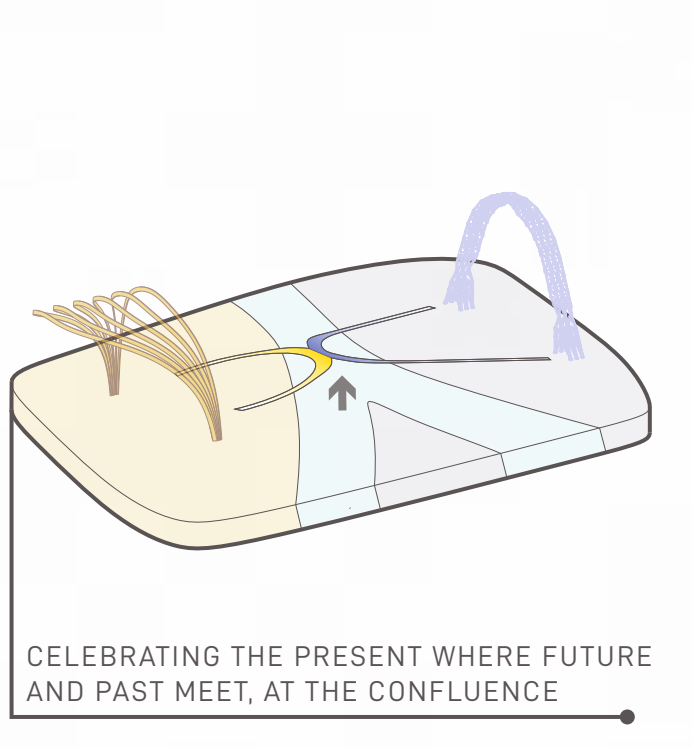
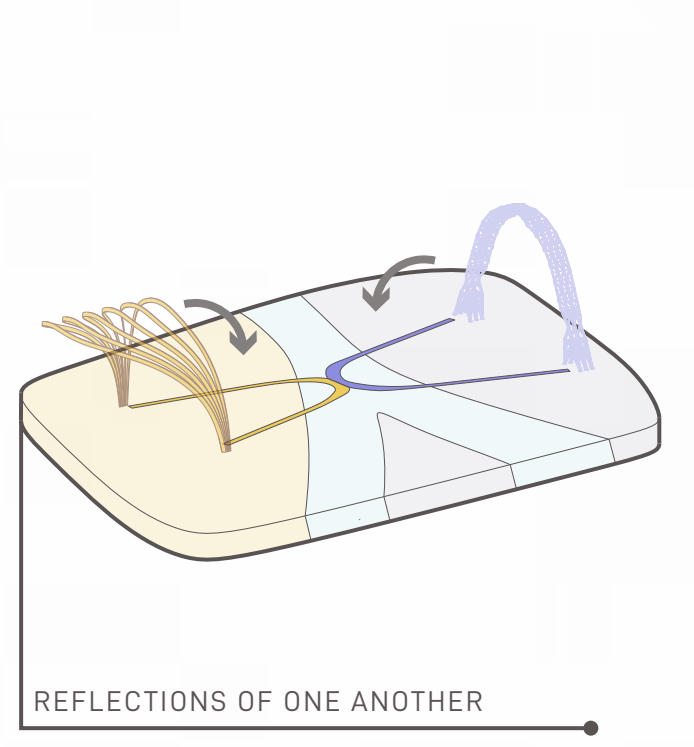
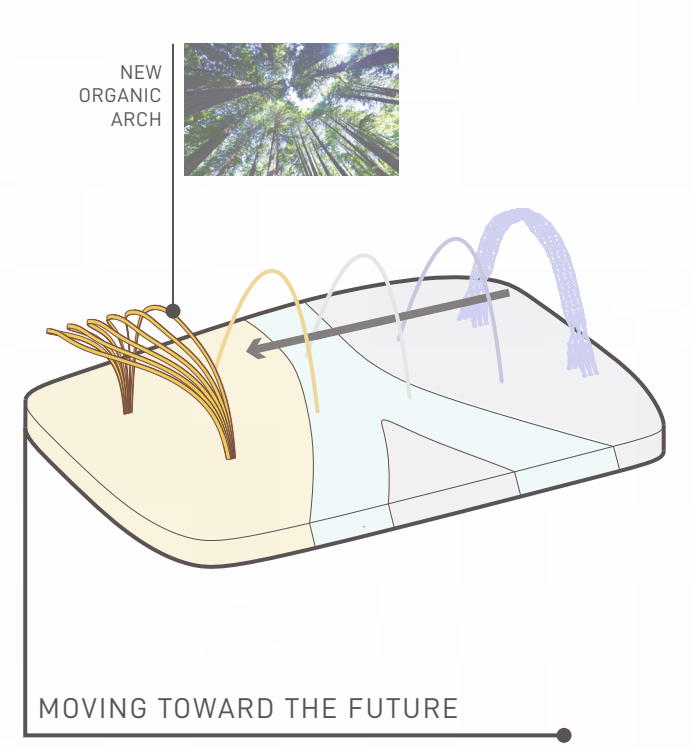
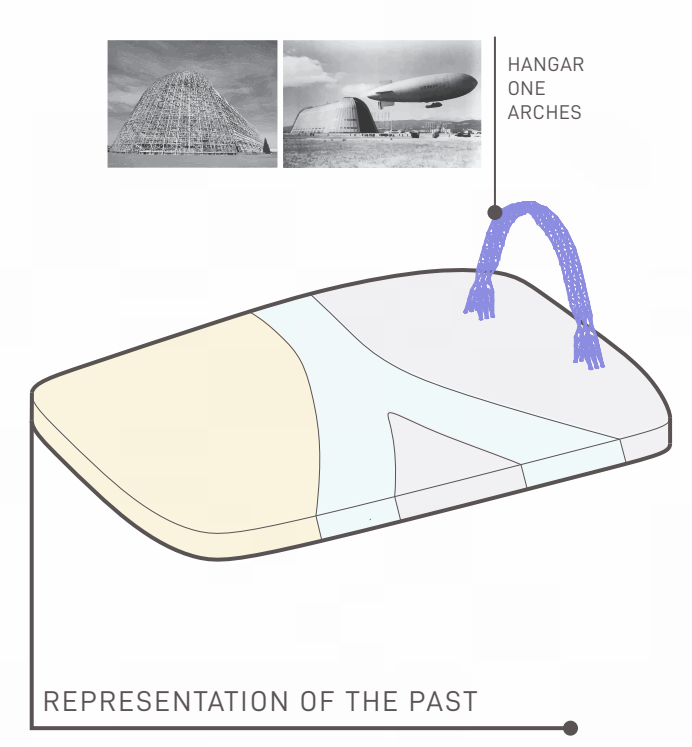
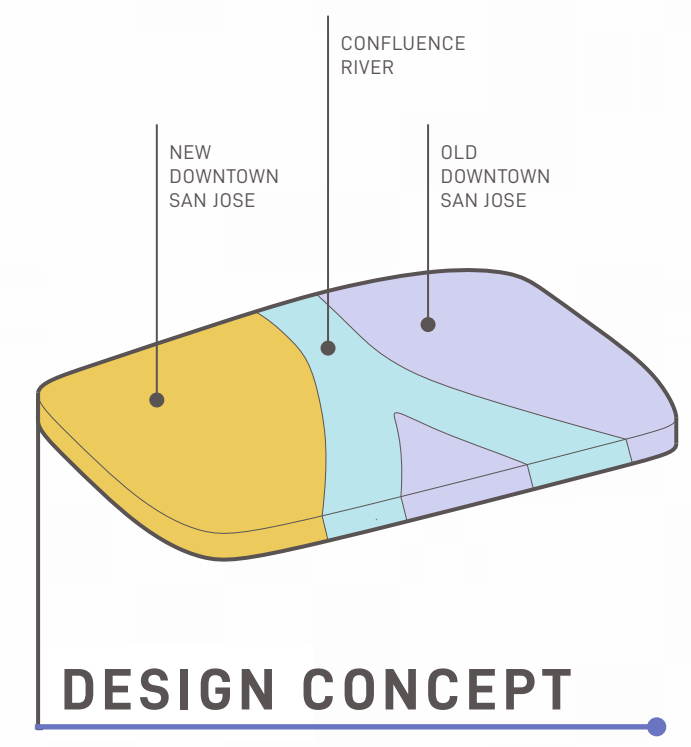
San Jose, the heart of Silicon Valley, is home to the world's pioneering titans of invention. This legendary city deserves an equally respected landmark that honors its legacy while bringing together the diverse people who created it. ECHO is that iconic destination, connecting people and centuries of history where two rivers meet, at the gateway between old and new.

One of the world's largest freestanding structures, naval airship hangar 'Hangar One' built in the 1930's, is already one of the most recognizable landmarks in Silicon Valley. ECHO relocates a slice of Hangar One to Arena Green East, showcasing an engineering marvel that represents the legacy of San Jose as the technological center of the world. Suspended from this massive steel structure are cables for displaying cultural celebration and public demonstration banners. Situated below the glow of the LED-lit trusses are sports courts and a large open green space for events occurring day and night, which look through the arch towards historic downtown San Jose's skyline.

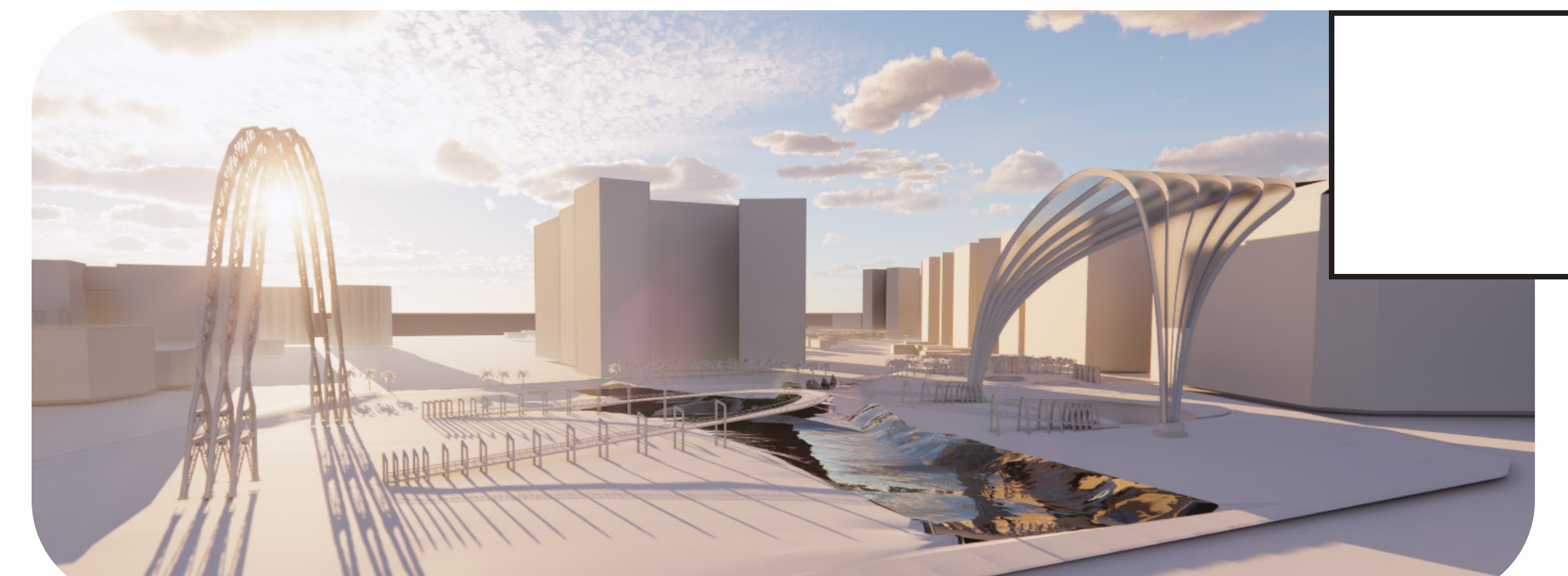
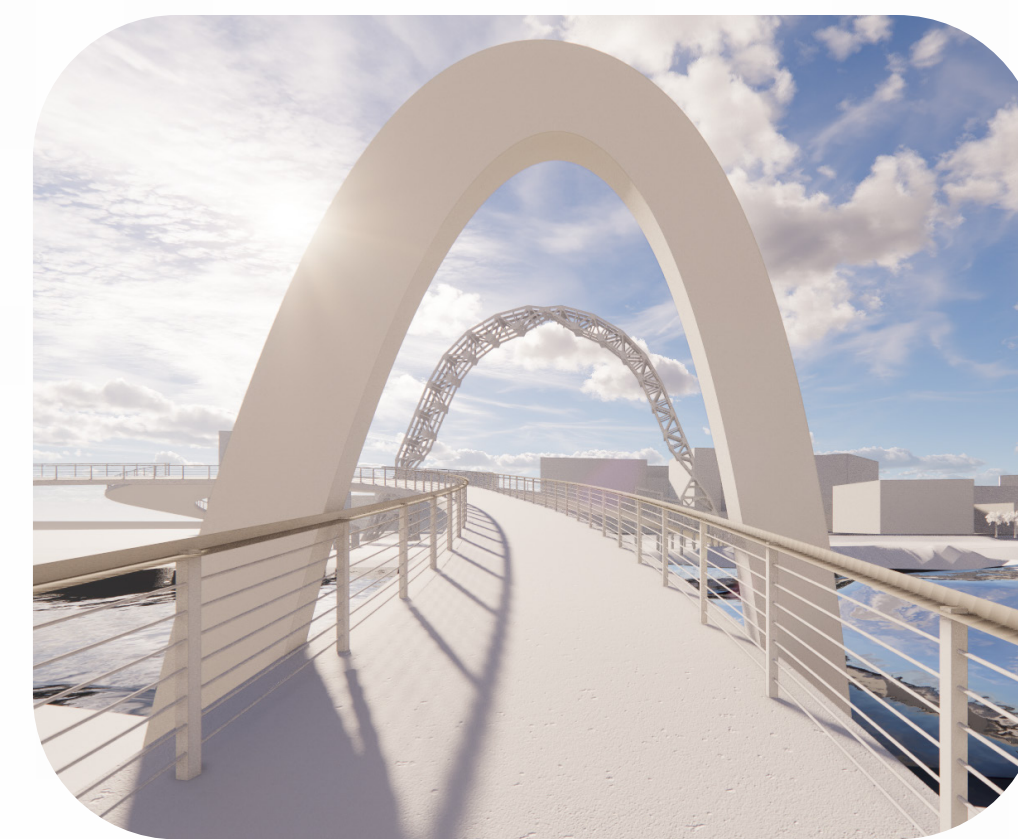
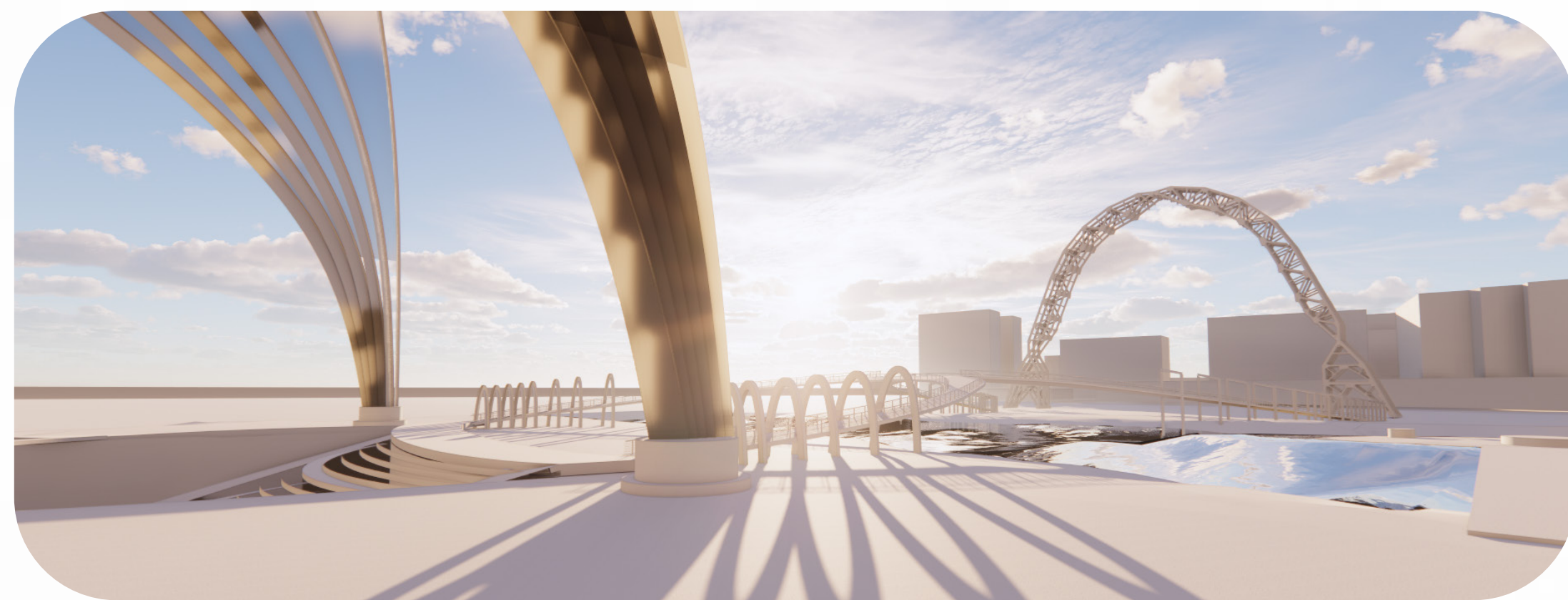
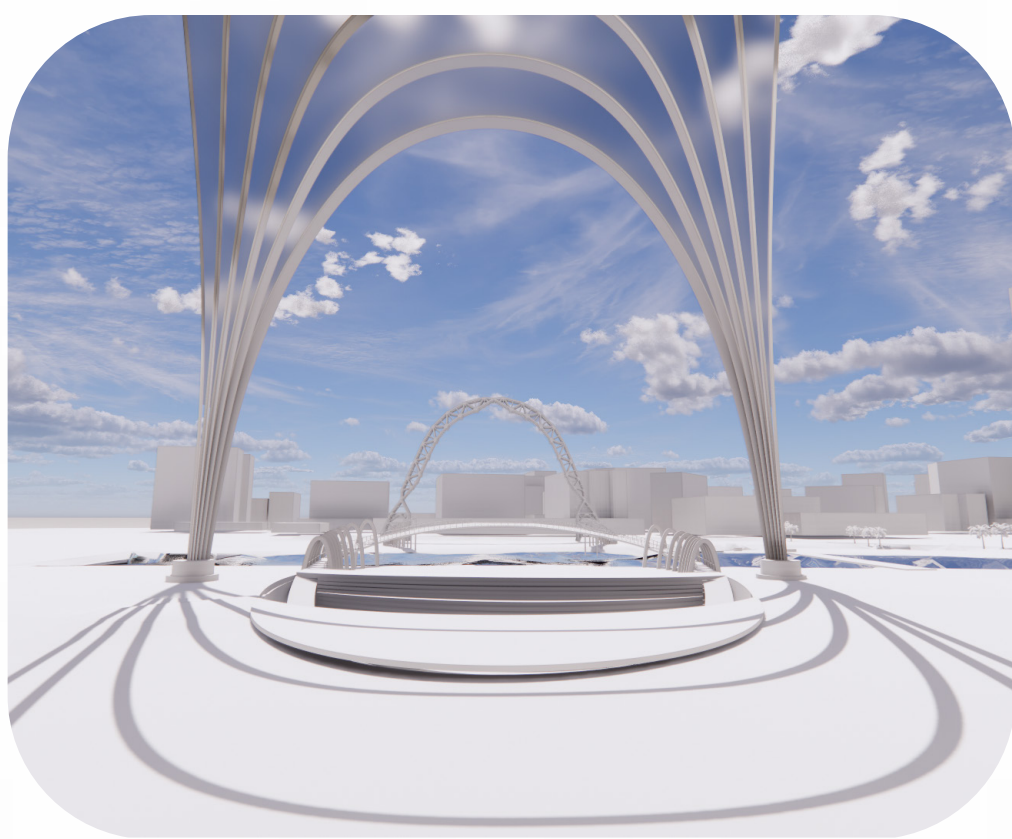
Moving from East to West, old to new, heavy, industrial arches are mirrored by equally impressive light, natural arches, where organic forms and materials represent stewardship of the environment. Reaching towards the future, the new arch utilizes the most technologically advanced systems on our planet: nature. Photovoltaic glass panels draped over expressive wood glulam beams generate all of the site's power, demonstrating the beautifully honest benefits of net positive design. Beneath the dappled light from the panels are spaces that celebrate experiences and melding of cultures: a below-ground amphitheater with local artists' murals, playgrounds and fountains for children, and a food truck court to connect over vibrant meals.

Where the shadows of the past and future meet, visitors of ECHO come together to observe and embrace the passing of time over the Guadalupe river. Touching the ground lightly and elevated above the water are two paths that merge as a bridge, representing the symbolic joining of the past and future, while respecting natural habitats of the park. Intentionally placed open space at the meeting of the two reflections encourages visitors to enjoy a moment in time, views of the past and future, the river, and one another.

ECHO represents the intersection of modern technology, history, art, architecture, engineering, and place-making. It is a celebration of history, advancement, and diversity of people from San Jose, and a place to connect, inspire, and move forward together.



MATERIALS PALETTE



ARCH ECHOES - OLD + NEW

FROM AMPHITHEATER TOWARD HISTORIC SAN JOSE

BRIDGE TOWARDS HISTORIC ARCH

ECHO FROM WEST SAINT JOHN ST



SITE PLAN



AMPHITHEATRE:
OUTDOOR EVENT VENUE PROVIDING LIVELY ENTERTAINMENT FOR THE COMMUNITY. THE AMPHITHEATRE ACTS AS THE CENTERPIECE OF THE NEW ARCH.



FOOD TRUCKS + SEATING:
BUSTLING FOOD TRUCKS AND SEATING AREA SERVING CROWDS FROM THE PARK, SAP CENTER, LOCAL BUSINESSES, AND THE NEIGHBORHOOD.



SPORT COURTS:
MULTIUSE COURTS FOR PUBLIC RECREATION, SUPPORTING A HEALTHY, ACTIVE COMMUNITY. COLORFUL HARD SURFACE COURTS PROVIDE FUN VISUAL INTEREST.



PICNIC TABLES + BBQ GRILLS:
DEDICATED PICNIC AREA WITH BBQ GRILLS. FOR USE BY THE COMMUNITY FOR SMALL AND MEDIUM SIZED GATHERINGS.



OFF-LEASH DOG PARK:
SAFE FENCED AREA FOR DOGS TO RUN, PLAY, AND SOCIALIZE.



WATER FOUNTAINS:
BEAUTIFUL WATER FOUNTAINS PROVIDE A STRIKING VISUAL LANDMARK AND CALMING CONNECTION TO NATURE.



PLAY AREA:
FAMILY-FRIENDLY AREA WITH CHILDRENS' PLAY STRUCTURES FOR HEALTHY, ACTIVE YOUNGSTERS.



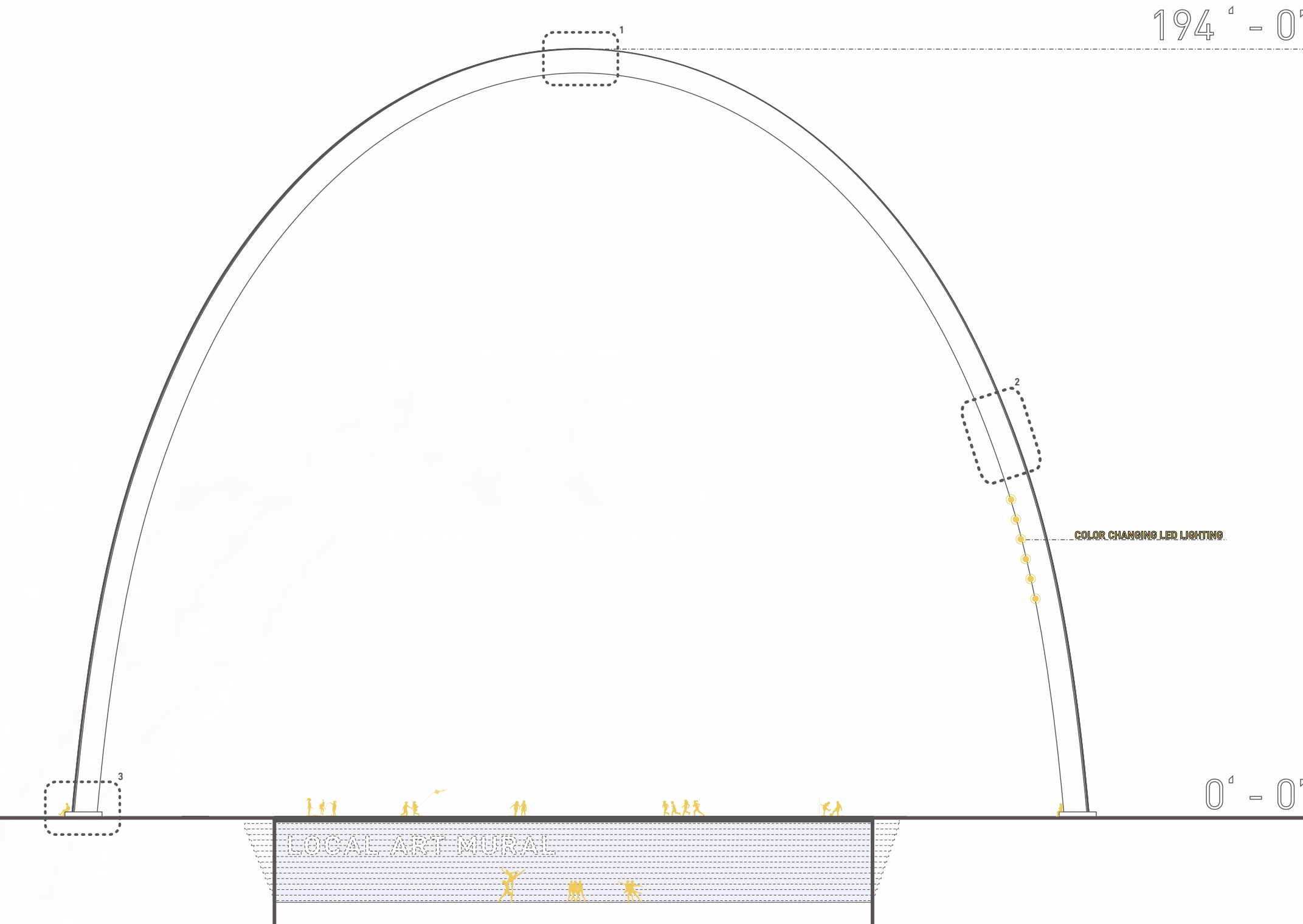
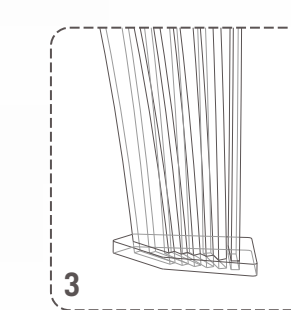
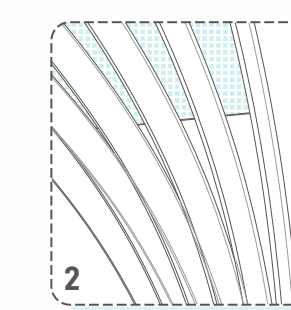
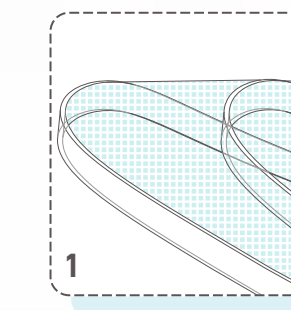
PUBLIC ART:
DEDICATED LOCATIONS FOR PUBLIC ARTWORK BY LOCAL ARTISTS, CREATING CULTURALLY AND VISUALLY-RICH PUBLIC SPACES.



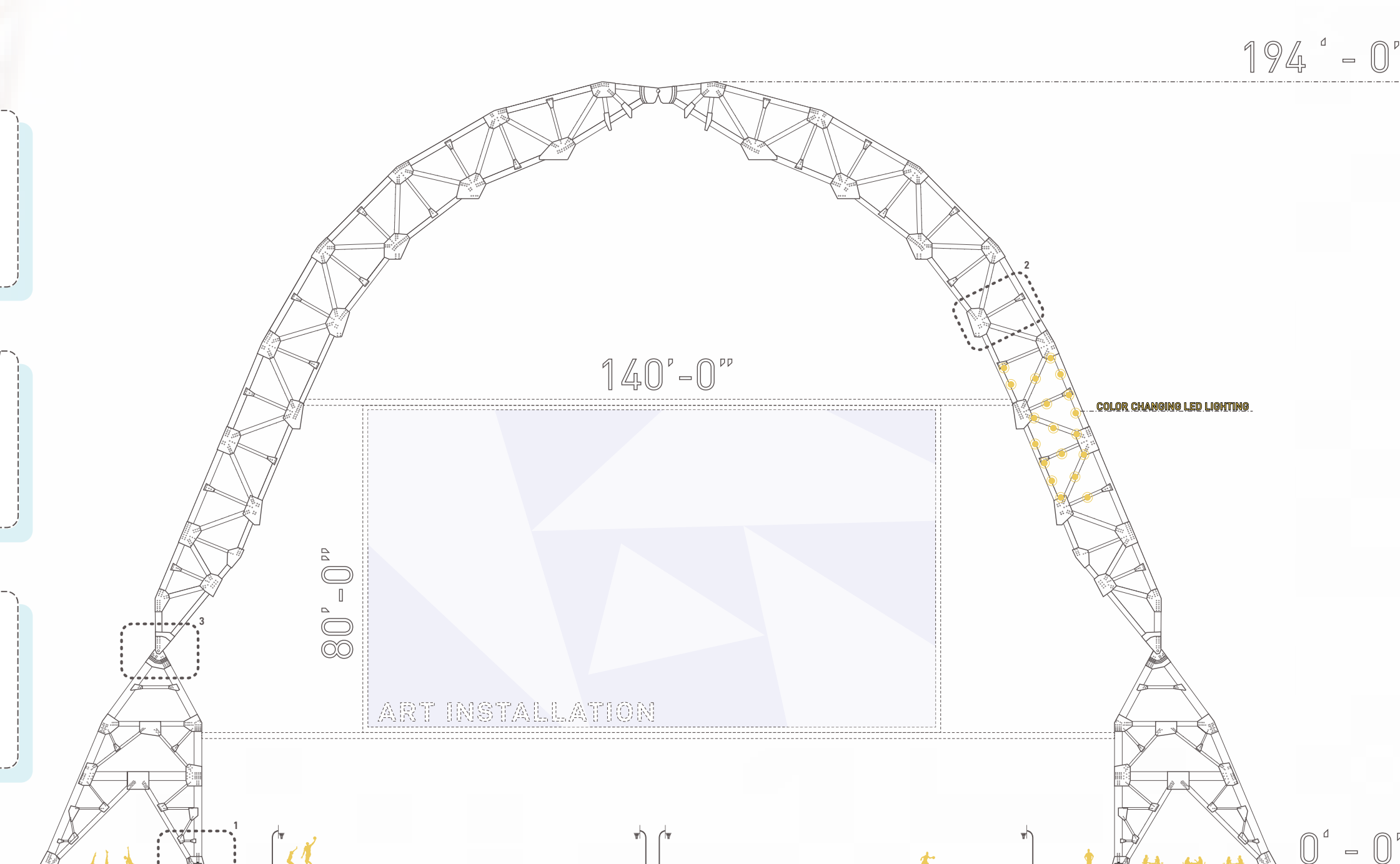
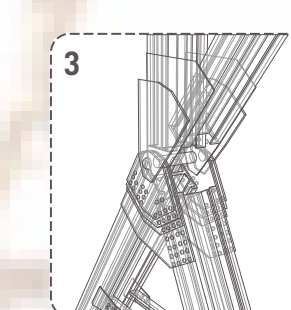
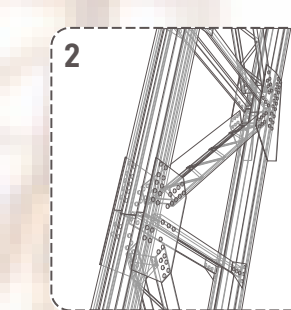
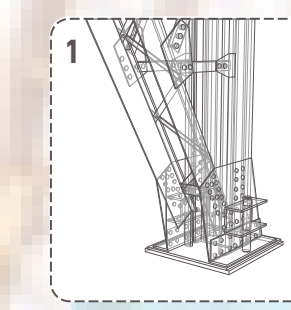
PEACEFUL PROTEST / GATHERING SPACE:
LARGE GRASSY OPEN SPACE FOR PEACEFUL PROTESTS AND LARGE EVENTS. THE AREA PROVIDES FLEXIBLE RECREATION SPACE FOR THE COMMUNITY.



COMMUNITY GARDENS:
GARDEN AREA PROVIDES THE COMMUNITY WITH A BEAUTIFUL GREEN SPACE, PLUS INCREASED ACCESS TO HEALTHY FOOD, PHYSICAL ACTIVITY, AND FOOD EDUCATION.



ELEVATION OF NEW ARCH



ELEVATION OF OLD ARCH