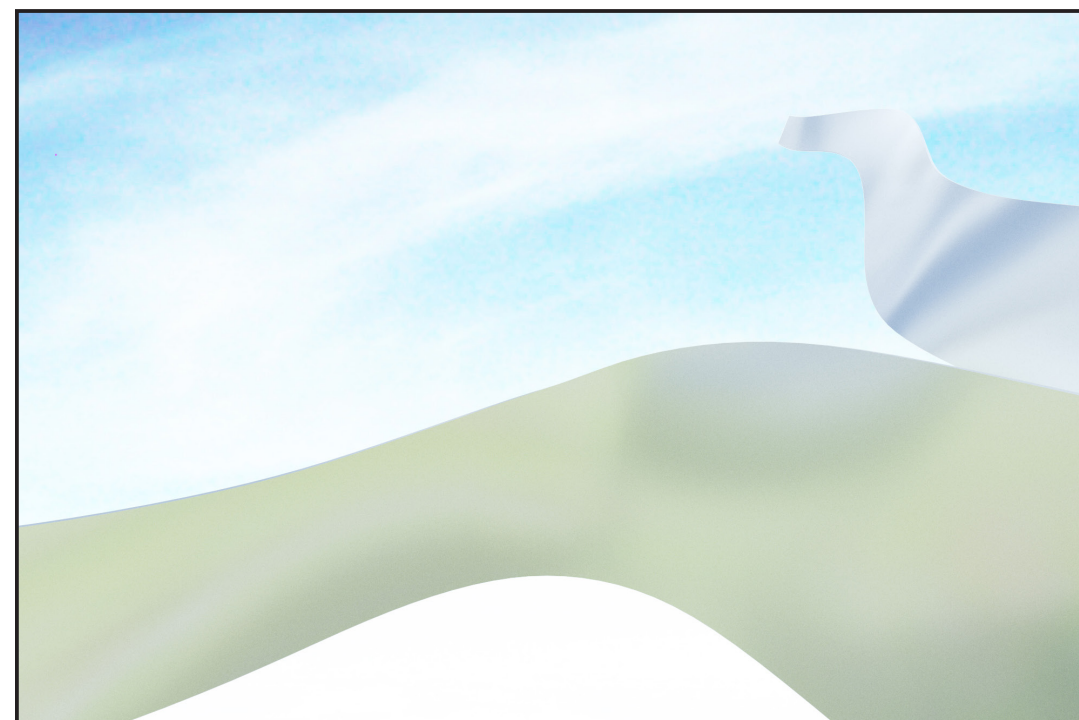


the ribbon



view from confluence point The ribbon subtly descends towards arena green, delicately weaving between the trees below.



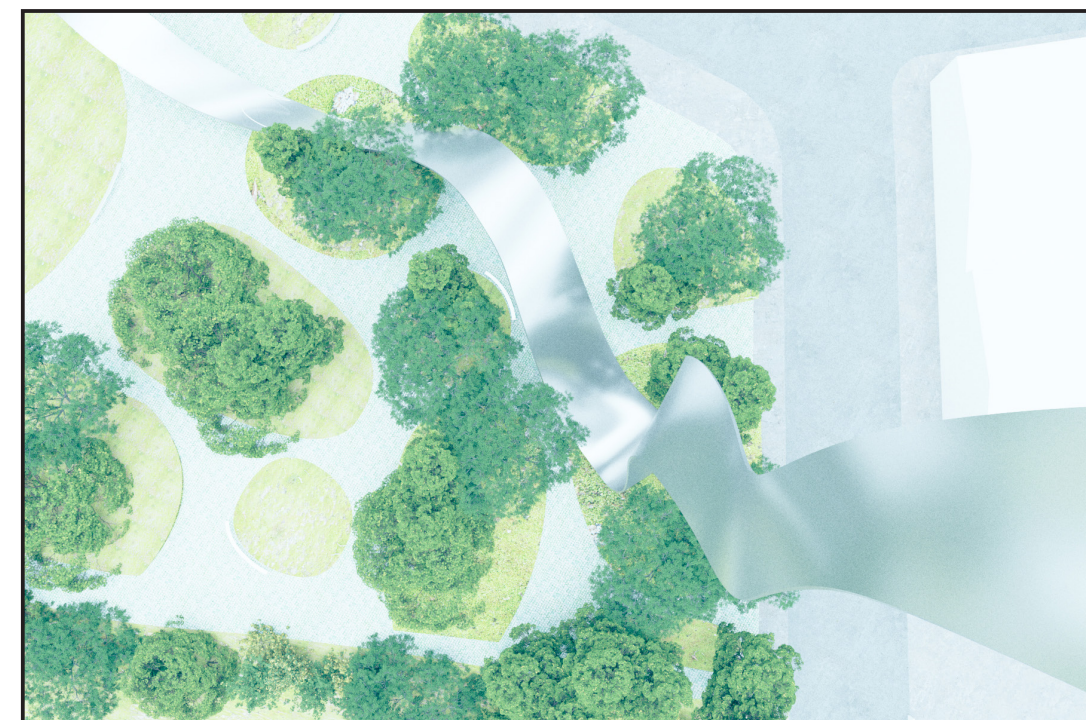
a weightless monument

The monumental presence of The Ribbon is softened as it subtly dissolves into the sky above, giving the impression of a flame endlessly flickering into the distance. The brushed steel surface reflects in muted tones the ever-changing atmosphere of the day, the landscape of Arena Green as well as the activity of the new plaza below.



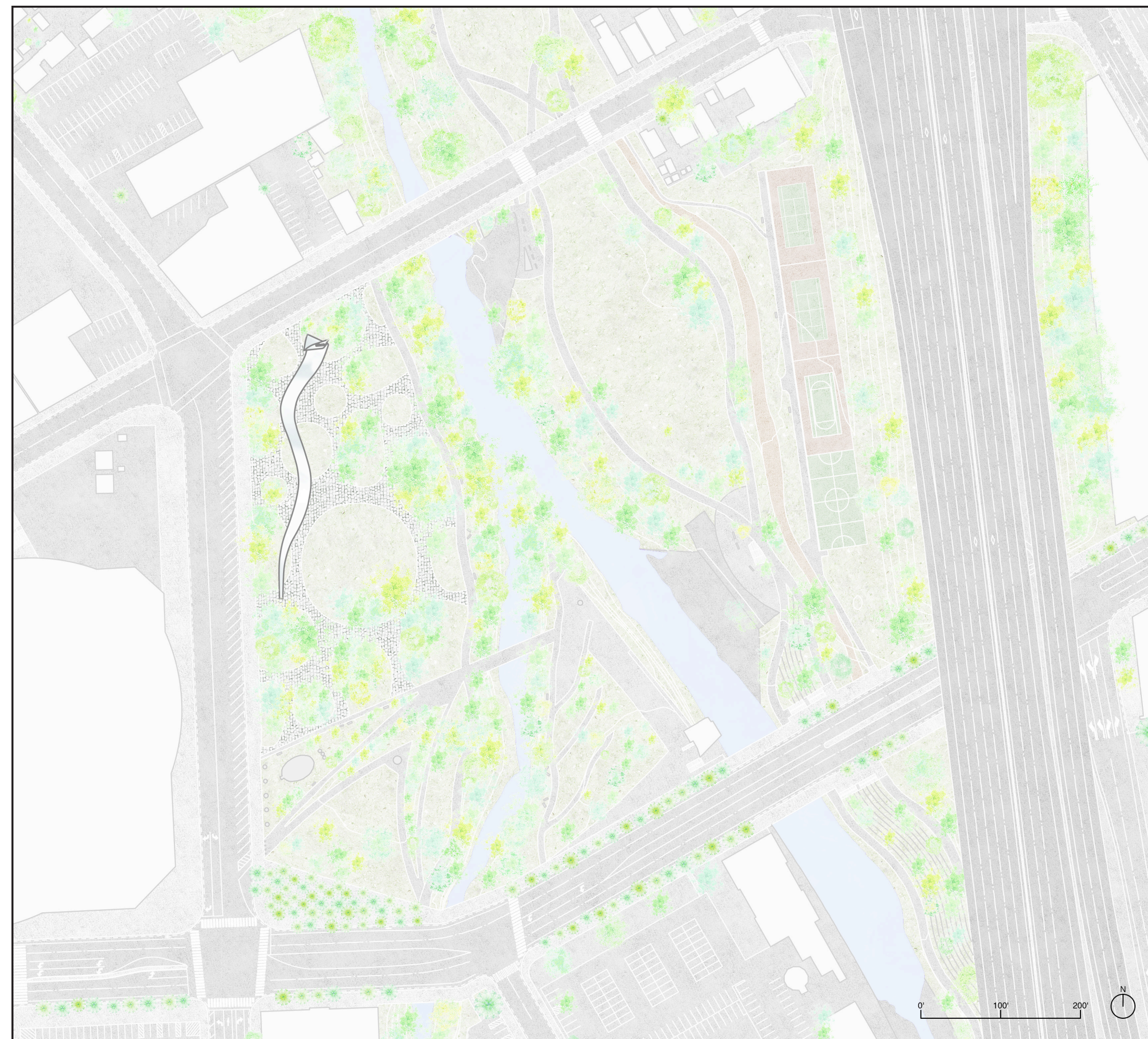
framing arena green & the city of san jose

The deep valleys and wide arches of The Ribbon serve to frame views of the surrounding landscape of Arena Green, Guadalupe River and Confluence Point, as well as the skyline of downtown San Jose. In this way The Ribbon highlights the existing scenery, creating an equal relationship between its own physical presence and the symbols of Silicon Valley that encircle it.



weaving through the landscape

As the curves of The Ribbon descend towards Arena Green it finds its footing as it meanders through the park and plaza below. Careful consideration of the location of existing trees and the path by which The Ribbon takes through them allows for the maximum retention of the established vegetation. The porous landscape design of the plaza promotes easy entry points from all borders of the park with additional trees installed in certain locations to create greater density of greenery and areas of shade.



site plan 1:1500



the ribbon plaza plan 1:400



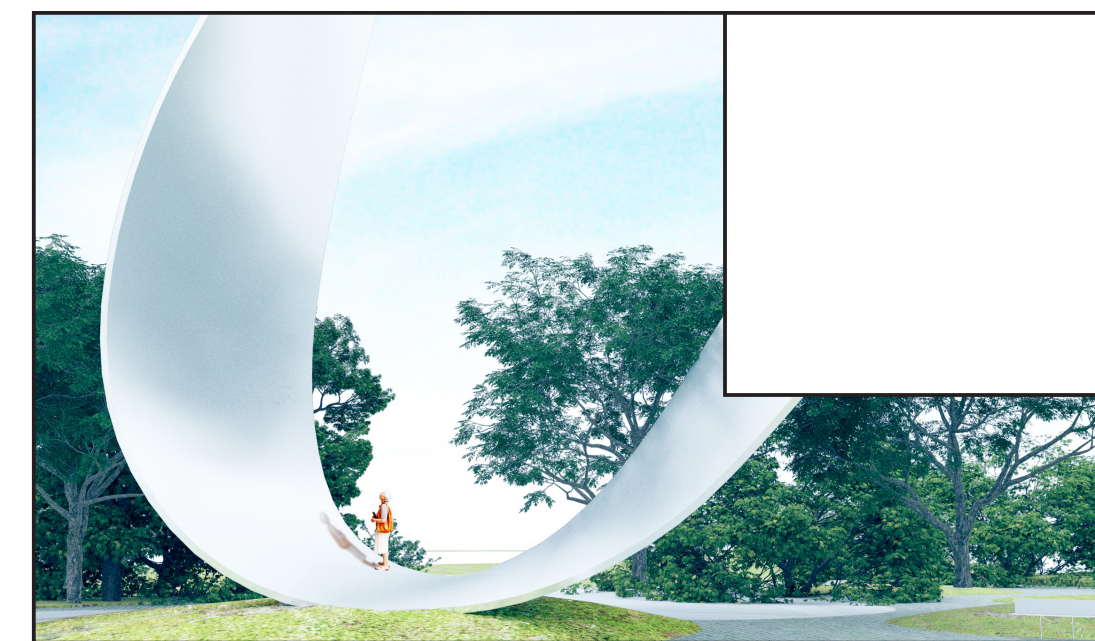
view from the city

Driving at night along Highway 87, a gently illuminated Ribbon will be seen descending towards Arena Green and meandering through the treetops along Guadalupe River. Slowly shifting kinetic lighting not only safeguards the natural migration of local bird species but also reinforces the image of a ribbon flickering in the sky, enhancing the presence of the structure at night.



neighbourhood landmark & local way-finder

Emerging from the landscape of Arena Green, The Ribbon will serve as a way finder in the local area, acting as not only an iconic landmark of this neighbourhood but also a navigational reference point for users of the Guadalupe River Park, passengers arriving at Diridon Station, visitors to the SAP Center as well as the new community that is to be formed around the planned Google Downtown West development.



1. tall valley the ribbon descends dramatically into an arch to form a deep valley. this unique occupiable space will become an iconic meeting place.



2. night plaza during the evening hours, the ribbon's arches provide a setting for after-work activities, such as vibrant night markets or pop-up plazas.



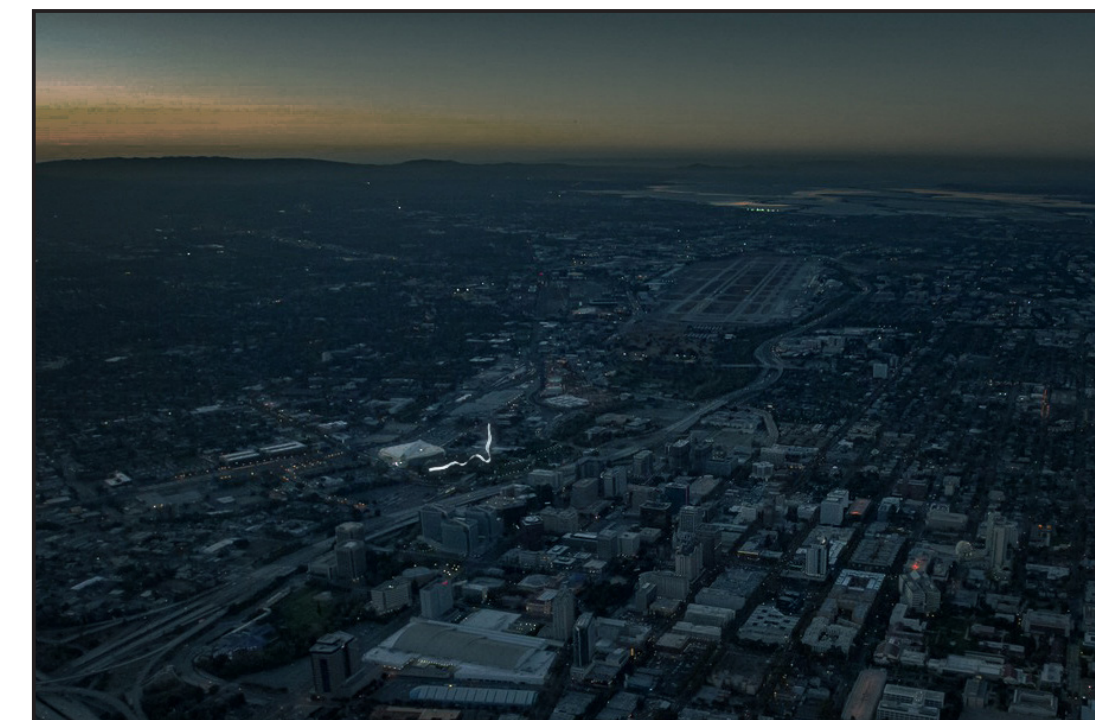
3. viewing platform on the ribbon's arches arena green, visitors are invited to ascend the structure & take in the view of downtown San Jose.



4. wide arch the sweeping arches of the lower ribbon serve to frame a variety of community activities - marathons, fitness, farmer's markets, art fairs.

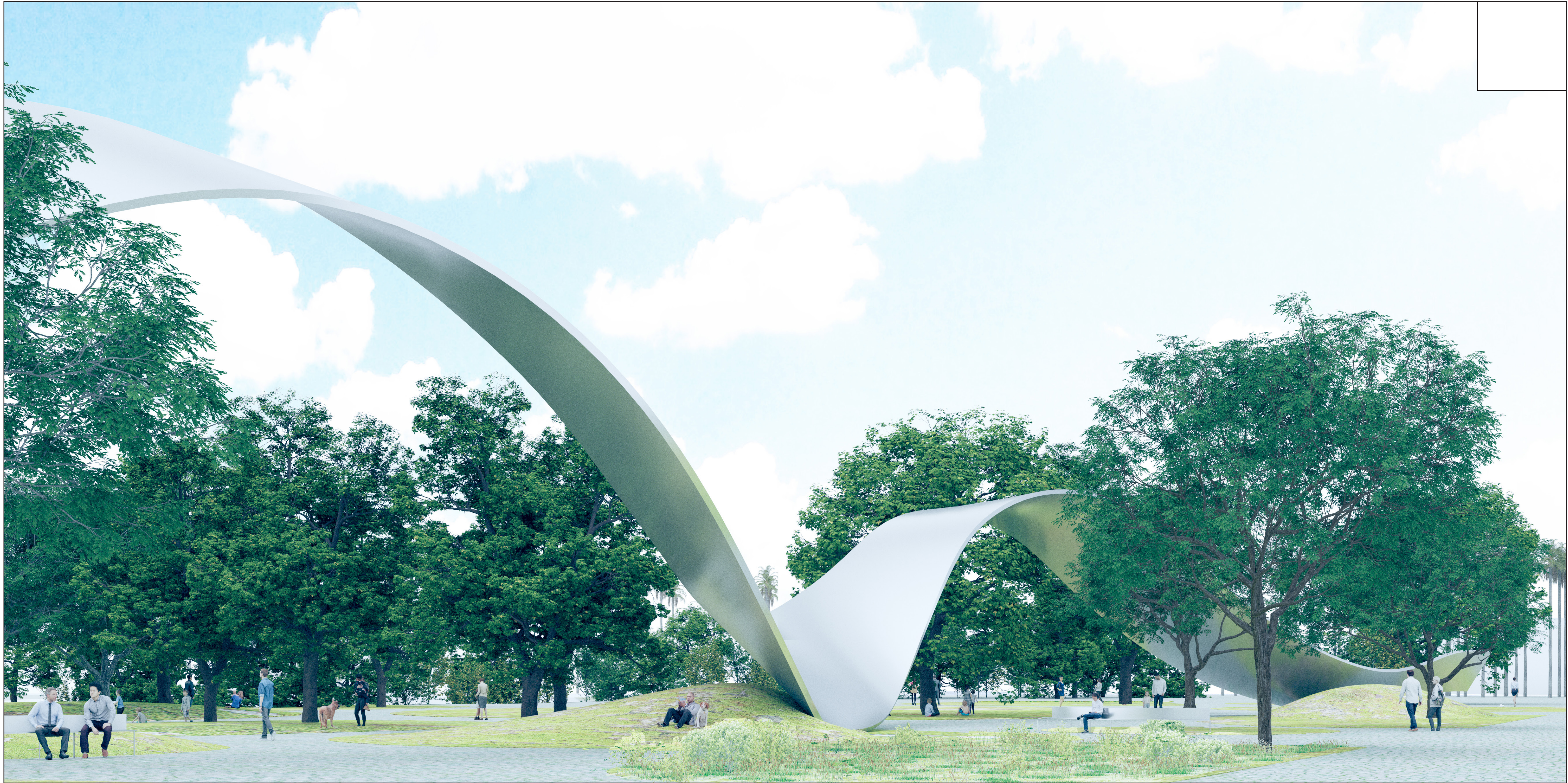


5. amphitheatre towards its far end, the ribbon houses a small outdoor amphitheatre, a venue for local arts performers and club meetings alike.

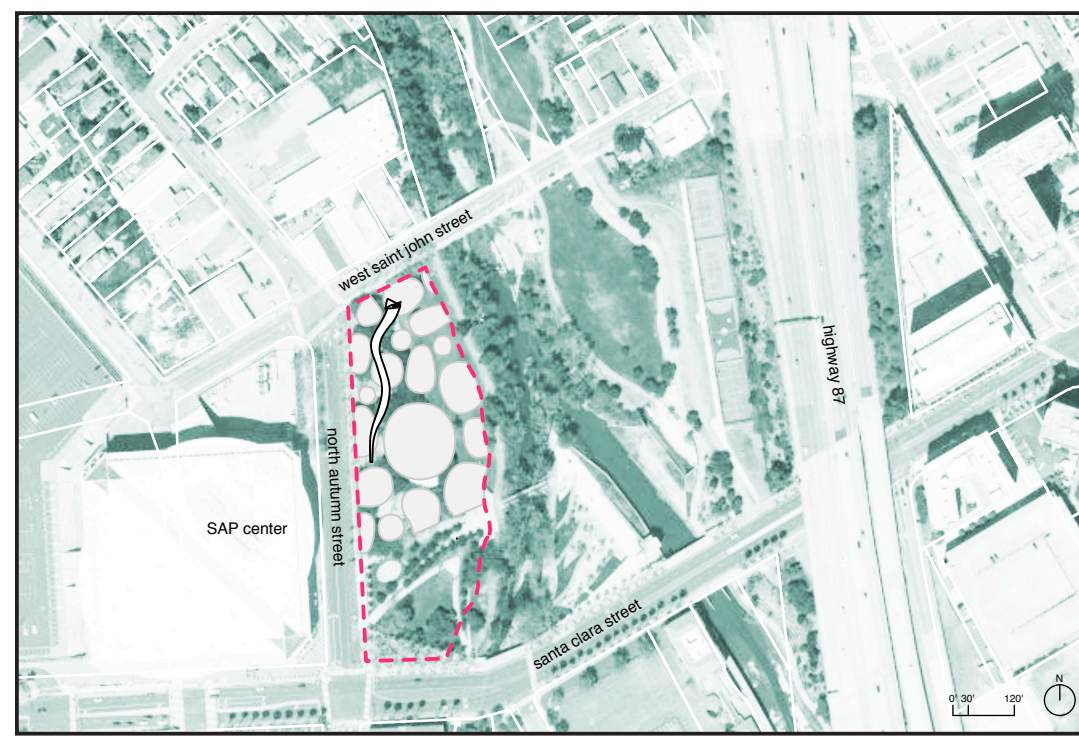


an icon for san jose

The elegant curves of The Ribbon will become a strong presence in the visual landscape of urban San Jose. Whether flying in at nighttime or driving by on your way downtown, the flickering profile will be seen at a great distance from endless vantage points, its shape subtly changing with each shift in point of view like a ribbon dancing in the wind. We propose The Ribbon as a modern landmark for Silicon Valley and the City of San Jose.

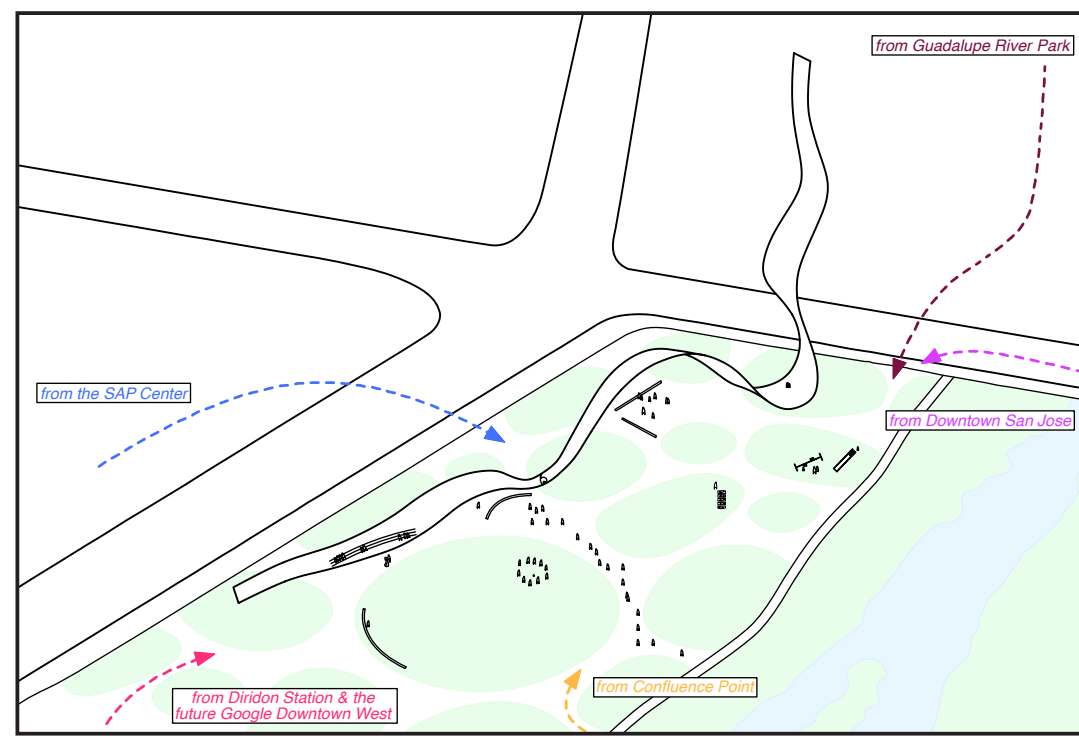


skipping arches meander through arena green Within the park The Ribbon gently weaves through the treetops, softly wrapping and thus defining the space of a new public realm below.



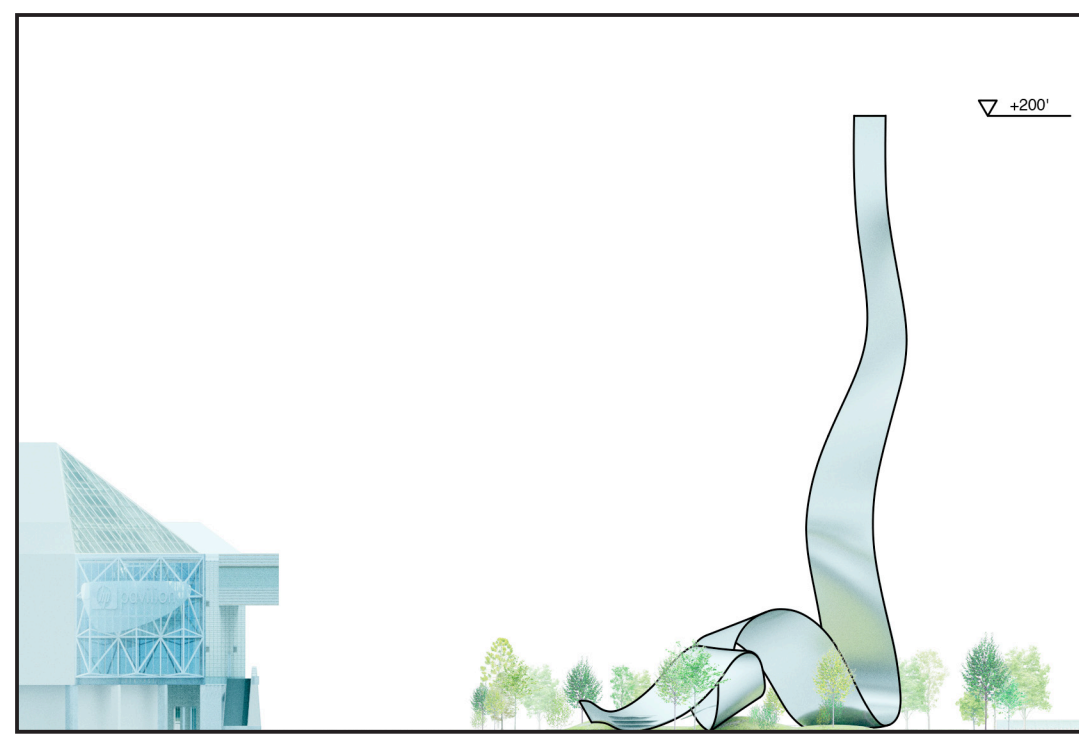
site map

The Ribbon is proposed to be located in the north west corner of Arena Green West, with the public plaza below spilling southward between the SAP Center and the Guadalupe River. The porous border of the plaza's landscape design and the way in which the feet of The Ribbon's arches are placed at select moments allow a seamless connection from the SAP Center, through the newly created Ribbon Plaza and toward the river.



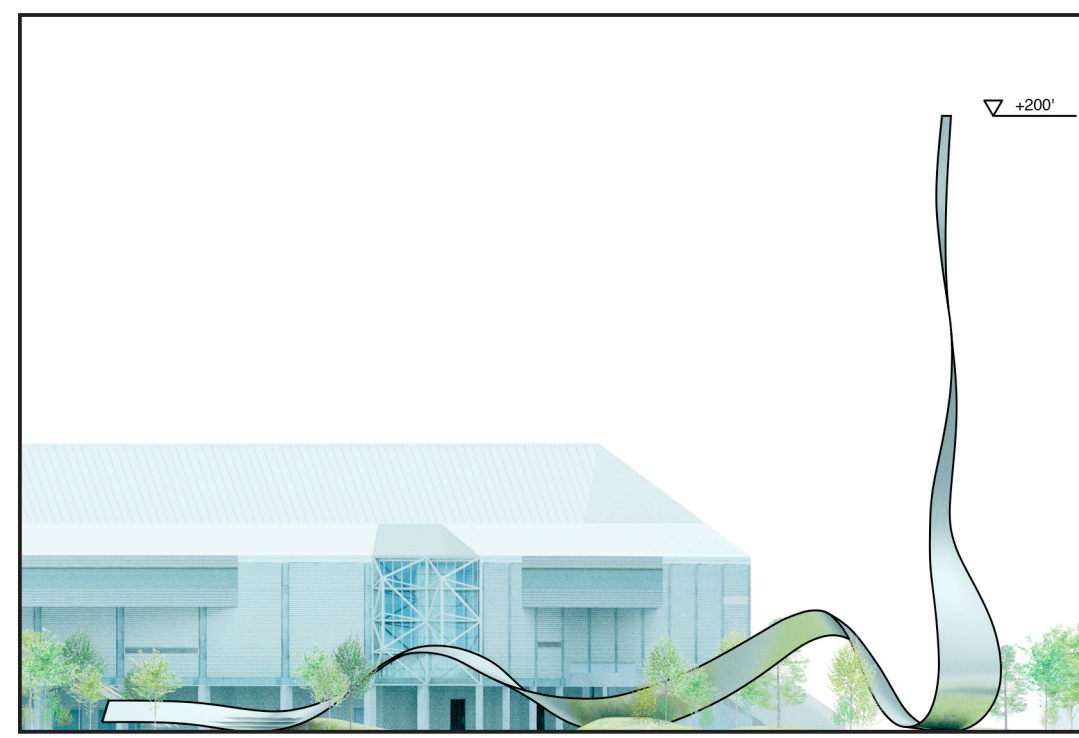
an accessible public plaza

The landscape of the public plaza that spreads out below The Ribbon invites visitors from all directions: at numerous locations the footpaths surrounding Arena Green West gently flow into the paved portion of the plaza, which then meanders around the greenscape and vegetation, leaving the visitor to choose their own path through the park and explore at their leisure. Furthermore, the connection between the external footpath and the plaza surface is seamless and barrier free, allowing access for all.



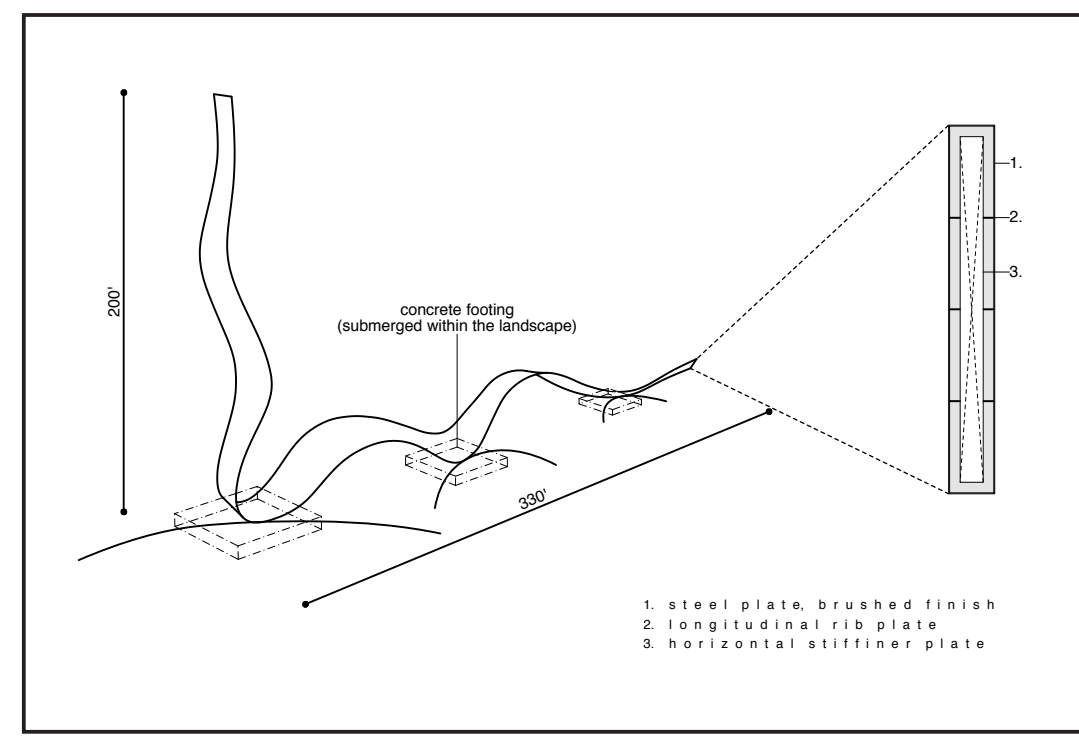
south elevation 1:750

The Ribbon gently floats from the sky toward Arena Green West, softly touching down on the north east corner of the park and bounding southward through the existing greenery, proposing a symbiotic and respectful relationship with both the natural environment and also the public spaces surrounding the SAP Center.



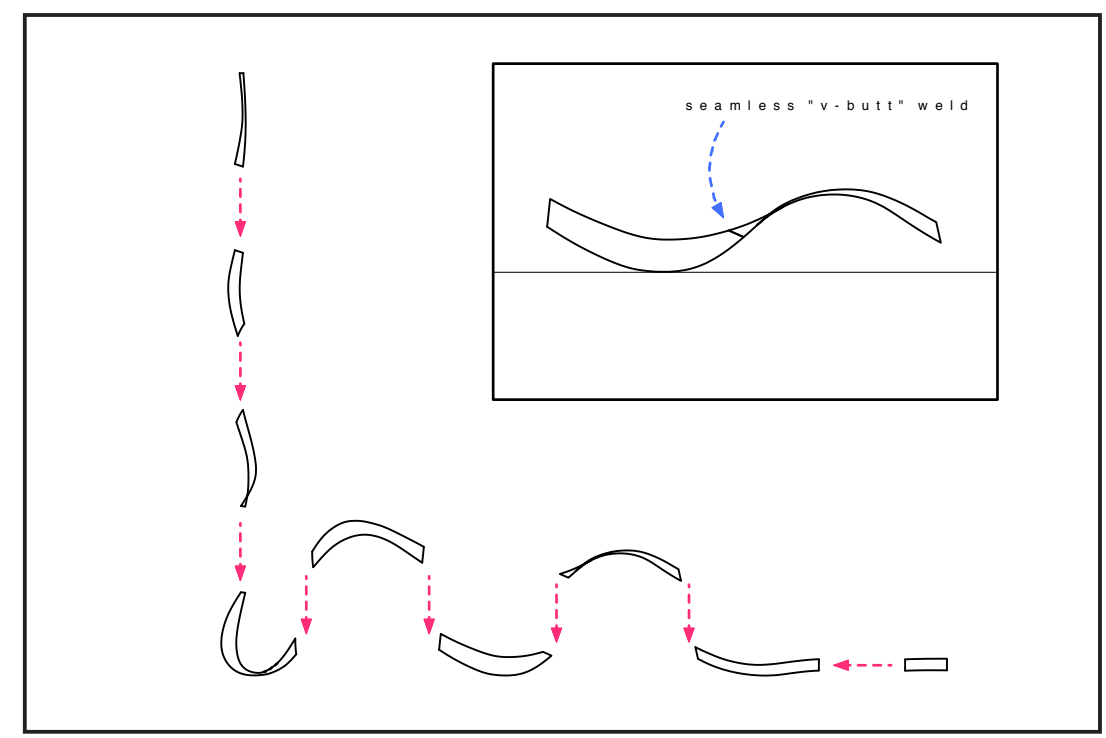
east elevation 1:750

Viewed from Confluence Point, Arena Green East and Highway 87, the arches of the ribbon carefully weaves through and preserves the existing trees of Arena Green West, softly defining a renewed public space both below and upon the delicate structure, while at the same time carefully framing the SAP Center beyond.



structural concept

The aesthetic simplicity of The Ribbon is mirrored in its structural design. The structure itself is composed of a simple box beam construction with internal plate stiffeners and a seamless brushed steel finish. Foundational concrete footings are buried within the landscape, from an engineering view point allowing the structure to withstand seismic, wind and gravity loads while at the same time enabling a delicate aesthetic vision of a ribbon skipping seamlessly through a significant public park.



construction methodology

The structure of The Ribbon will be prefabricated in segments of manageable size for transportation using state-of-the-art 3D steel forming techniques that translate the unique curve of each surface of the box beam directly from a digital model. These segments will then be transported to the site at night to minimize the impact of any required road closures and first connected into larger sections at ground level, which will thus be lifted and welded into their final position using temporary supports.