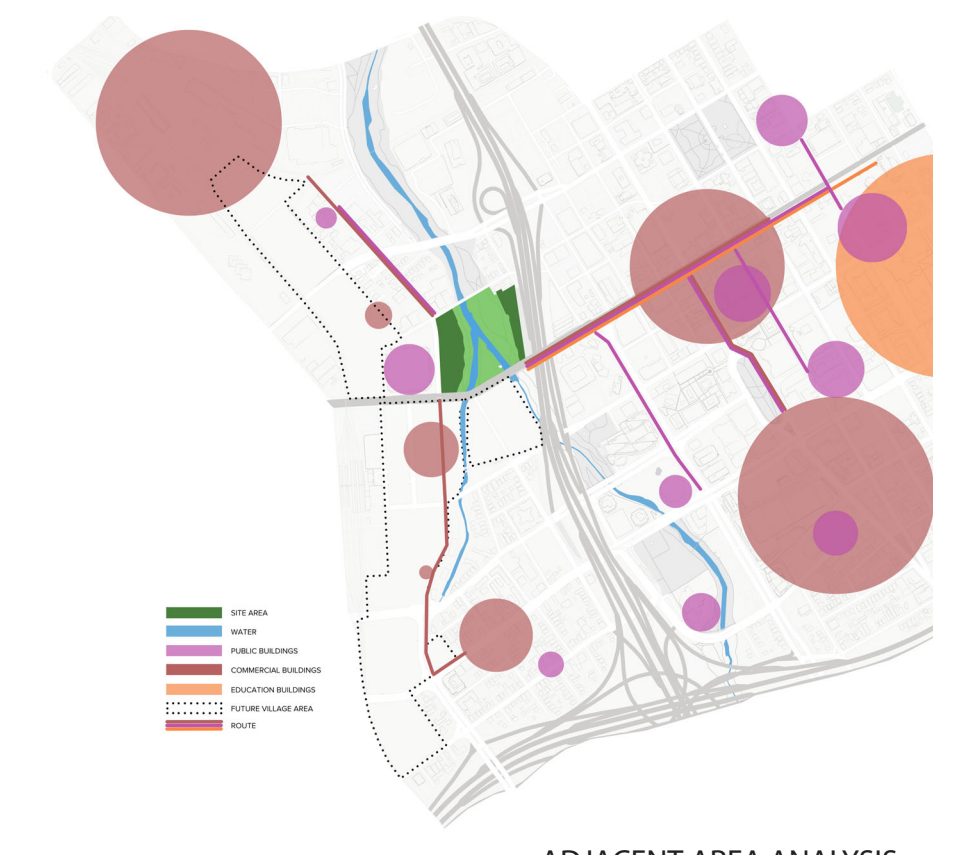
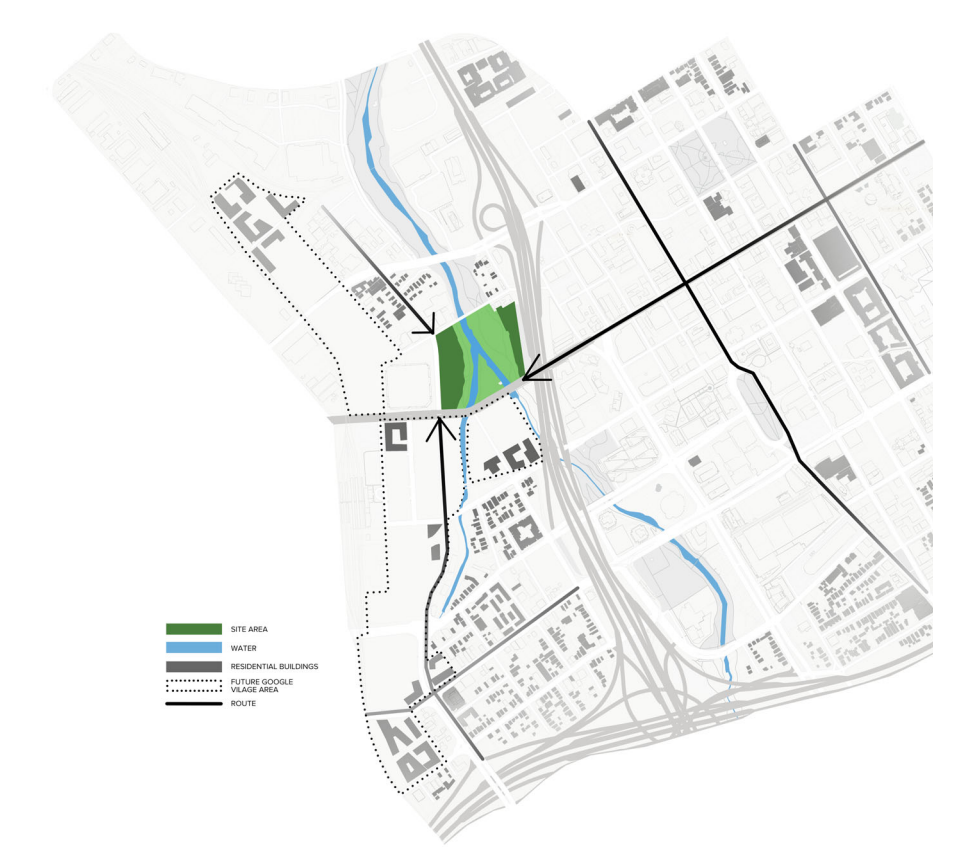
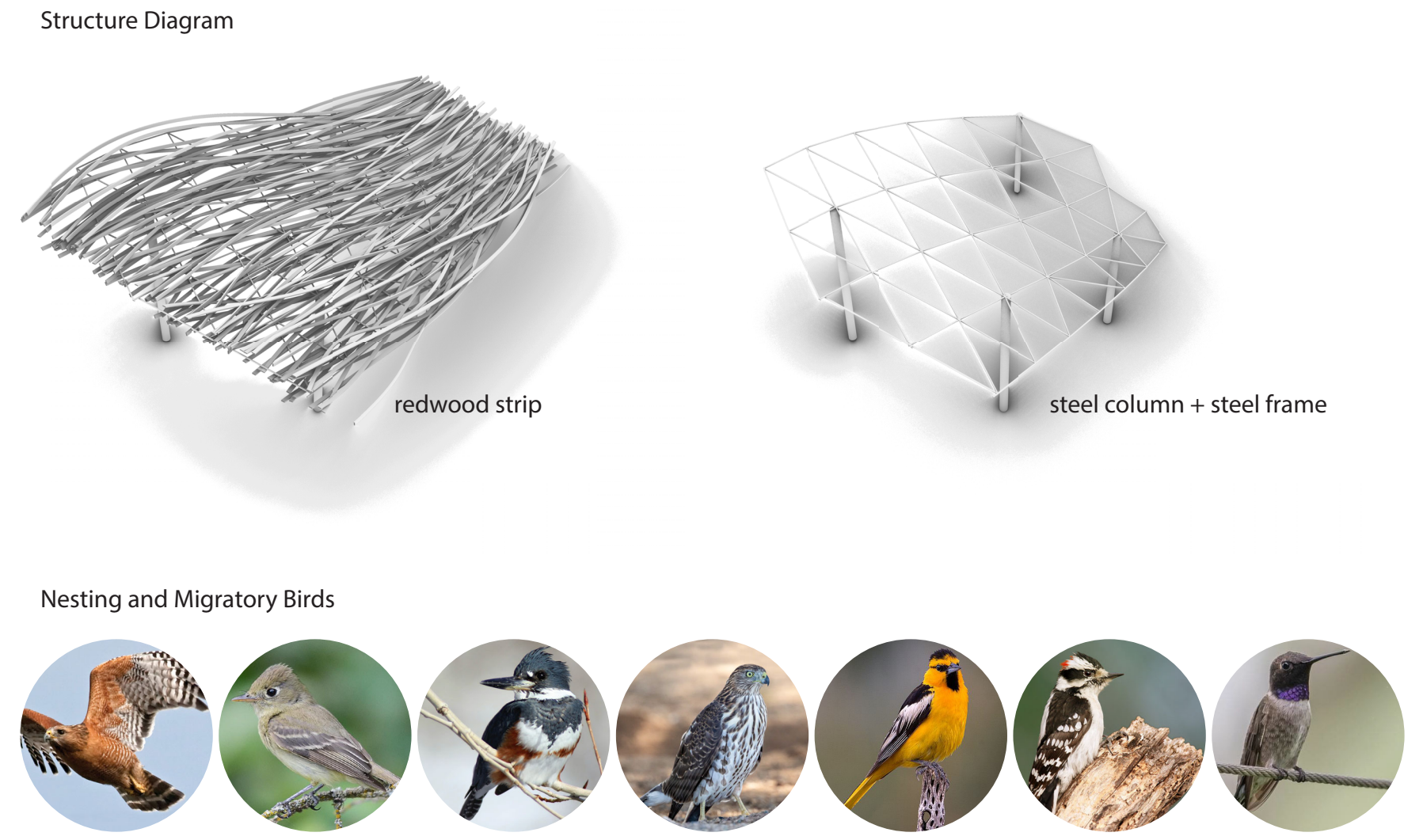
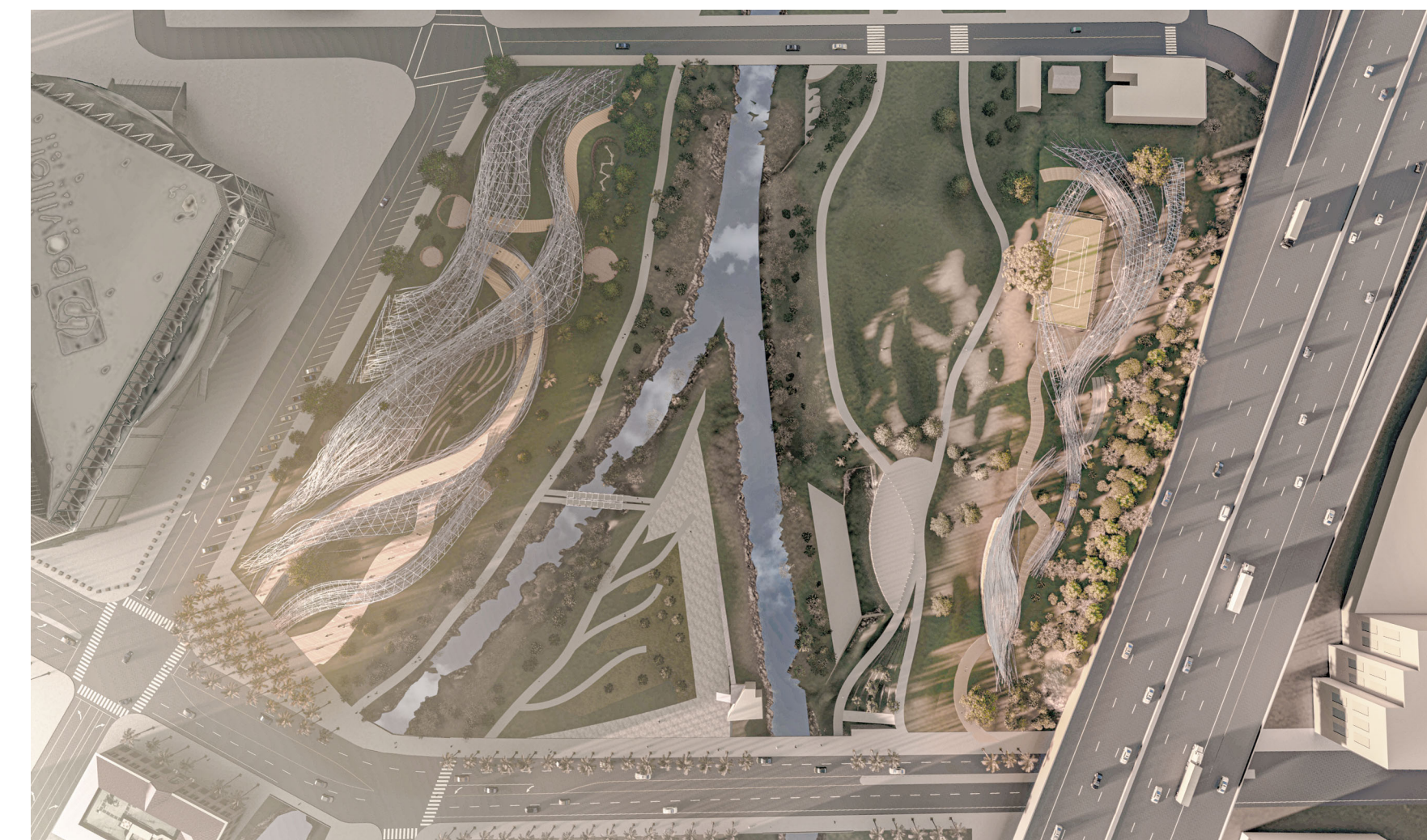
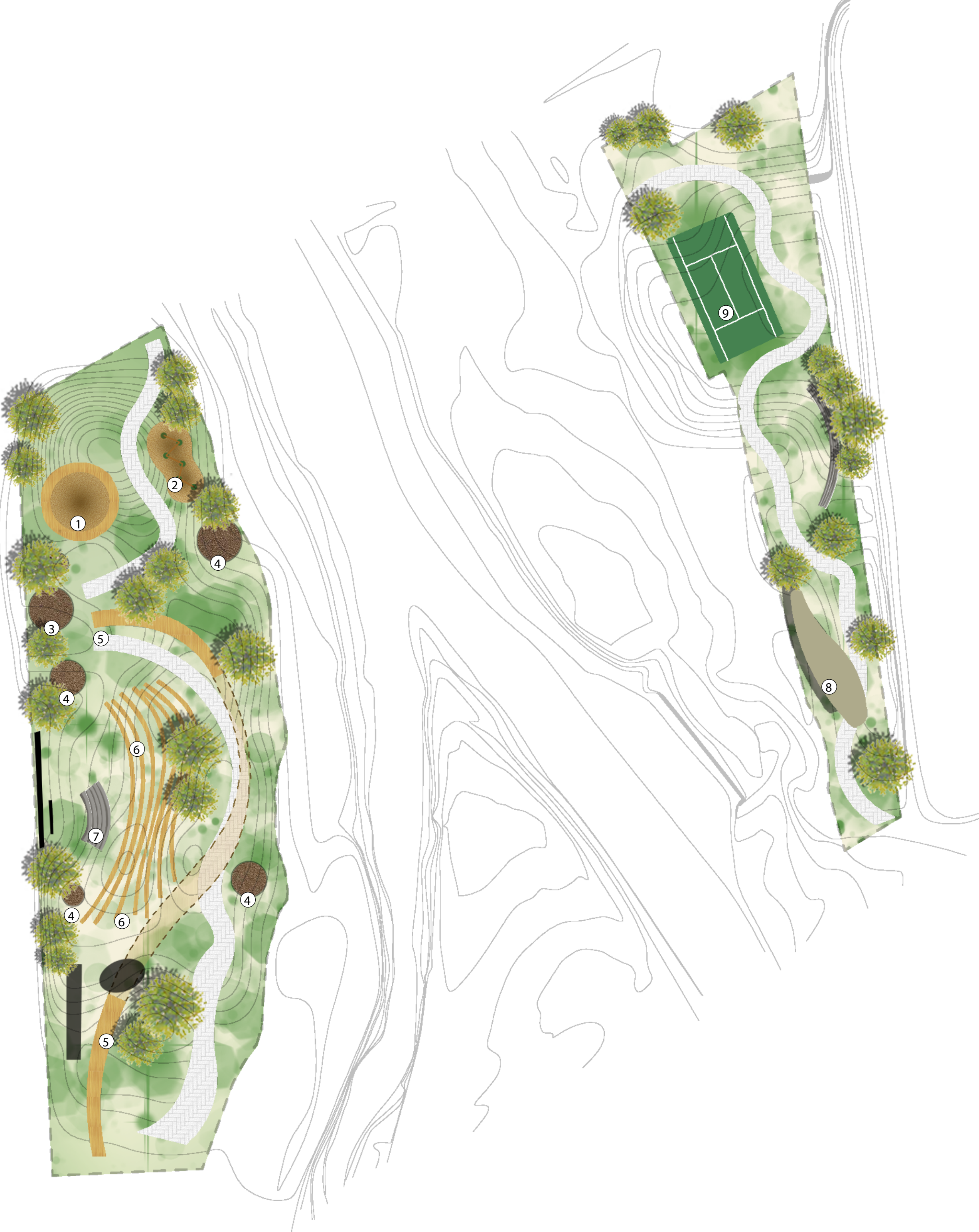
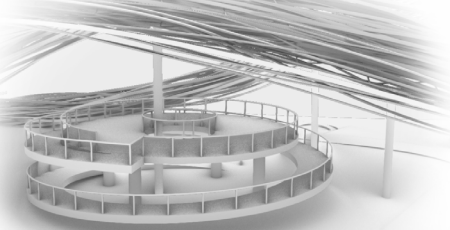

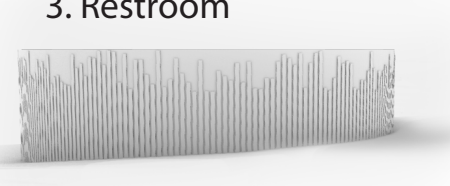

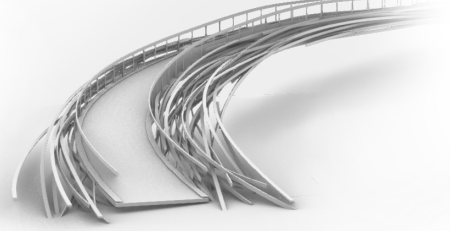

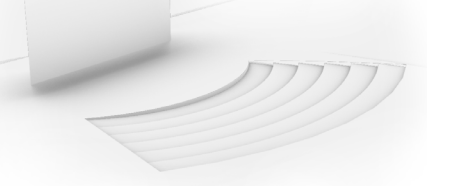



URBAN OASIS: FLOATING NEST

Extracting the river flow as the essential formalization to express the life circle the movement that links all the programs - the bike path, pedestrian bridges, amphitheatres, and integrated semi-private/ semi-public seating spot. At the same time, distributing the pedestrian path as the key movement factor that starts to lift from the ground at the southeast corner and slowly tending closer to the river bed that create both interactions with a western amphitheater on the ground and yet the visual connection towards the eastern side of downtown Oakland. Echoing to the western form design, the eastern side of Arena green's tennis court is hugged by the lifting nest, route to create shadows from the top that guide the pedestrian a path on the side to eventually meet the café at the northeast corner.





- 1. Kids Playground 
- 2. Kids Playground 
- 3. Restroom 
- 4. Private Multi-Use Area 
- 5. Floating Path 
- 6. Waving Bench 
- 7. Theater 
- 8. CAFE 
- 9. Tennis Court 