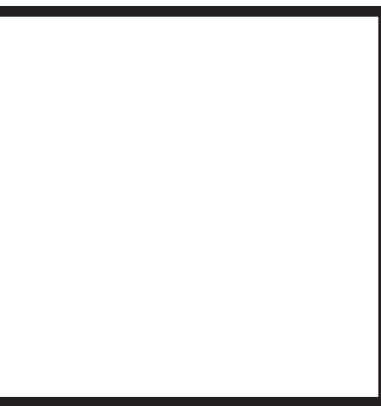
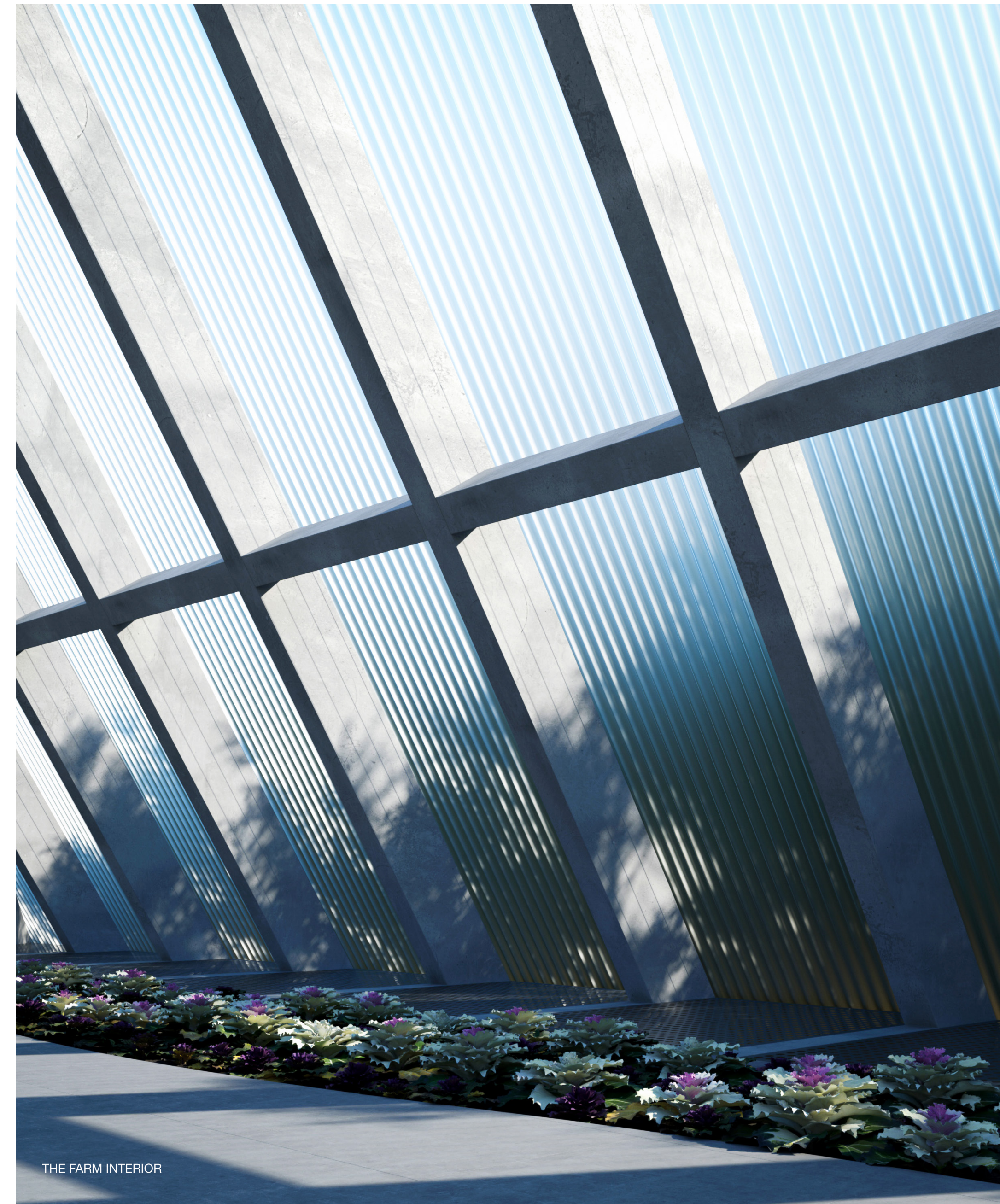


LAND PARK



THE FARM ENTRY



THE FARM INTERIOR

SITE PLAN

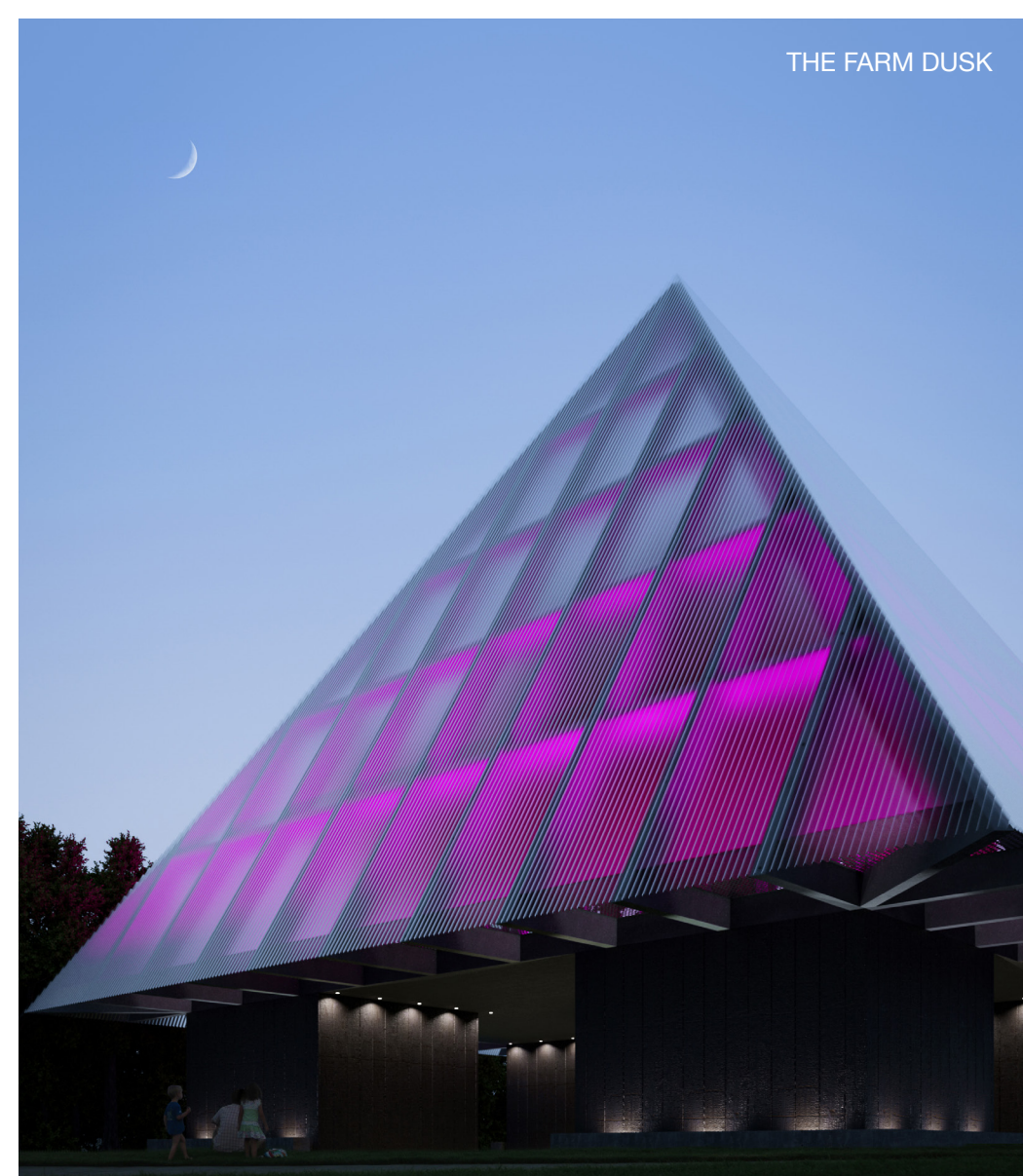
1. The Woods
2. The Farm
3. The Tanks
4. The Field
5. The Rake



LANDPARK is San Jose's newest campus, a place of culture where the natural and the constructed are engaged in a state of constant reconfiguration and discovery. Envisioned as a welcoming community space, it aims to be a global destination for sustainable design and a monument to the progress forged by the visionaries of Silicon Valley. LANDPARK invites visitors to absorb the Valley's past and ponder its future. Just as a community is not defined by a singular entity, this collection of objects unifies the campus.

TOP The Farm

This is the most direct reference to the Valley's agricultural roots, a veritable greenhouse garden space that serves the community as a source of nourishment and quiet respite. Its elevated form is a modern take on the pitched roof, and recycled corrugated glazing allows daylighting and provides high efficiency insulation. Also a programmable event space, The Farm illuminates in the evenings and acts as a beacon, celebrating team wins and national holidays.



THE FARM DUSK

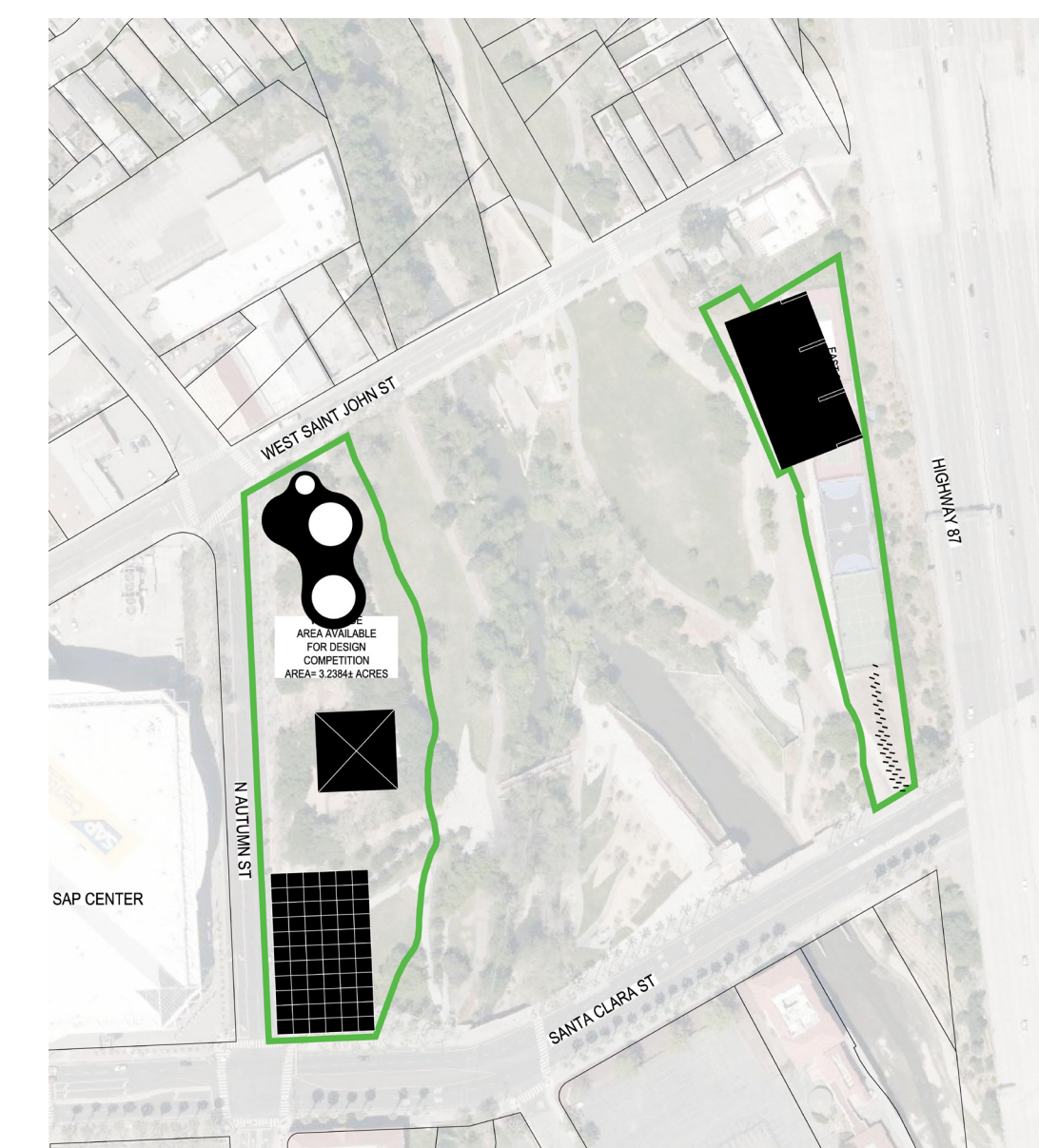


THE RAKE

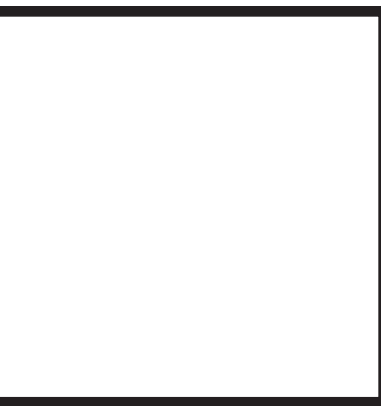
For nearly two centuries, San Jose was a farming community, and LANDPARK seeks to highlight those agricultural beginnings in form, purpose, and branding. The Woods welcomes visitors at the southernmost corner with its protective timber canopy. The Farm is nestled at the core of the park, a central greenhouse and market of organic produce. The Tanks cap off the site at the north, collecting, storing, and distributing water in the park and for the city. In The Field, rows of digital pylons invite community input and put it on display. And finally, The Rake reinvents the old courts, a place for communal play, self expression, and artistic takeover along the highway.

RIGHT The Rake

The Rake digs into the northeast corner of the site, a series of protected sports courts inviting recreation and free play while acknowledging the city's intense passion for athletics. The form is a billboard, a blank canvas for artistic expression, where locals will develop murals as part of an artist-in-residence program to engage the artistic community and encourage artistic expression that goes beyond the park and can broadcast community sentiment to a larger audience.



LAND PARK



THE WOODS



THE TANKS ENTRY



THE TANKS VIEW



THE WOODS NIGHT



THE TANKS POOL

LEFT
The Woods

The Woods is a natural rendezvous location for visitors of LANDPARK and the SAP Center, a hospitable open air pavilion with a bar and cafe program. The existing Five Skaters monument and relocated palms are unified within the protective timber canopy, a floating structure that allows visitors to sit among the trees and appreciate these historical symbols with new vantage points.

RIGHT
The Tanks

The Tanks is a hallmark of sustainability and net zero efficiency, serving as a rainwater collection and filtration vehicle, storage vessel reserved for the drought-stricken city, and irrigation mechanism for the park program. The reflecting pool at the center suggests The Tanks' storage capacity and the integrated staircase presents an informational gallery of The Tanks' mechanics. The curvilinear lagoon form evokes the classic California pool, and a stair court invites visitors to gather and watch performances. It rises just above the SAP center at 125 feet tall, mindful of the flight path while giving visitors uninterrupted rooftop views to the city and mountains.