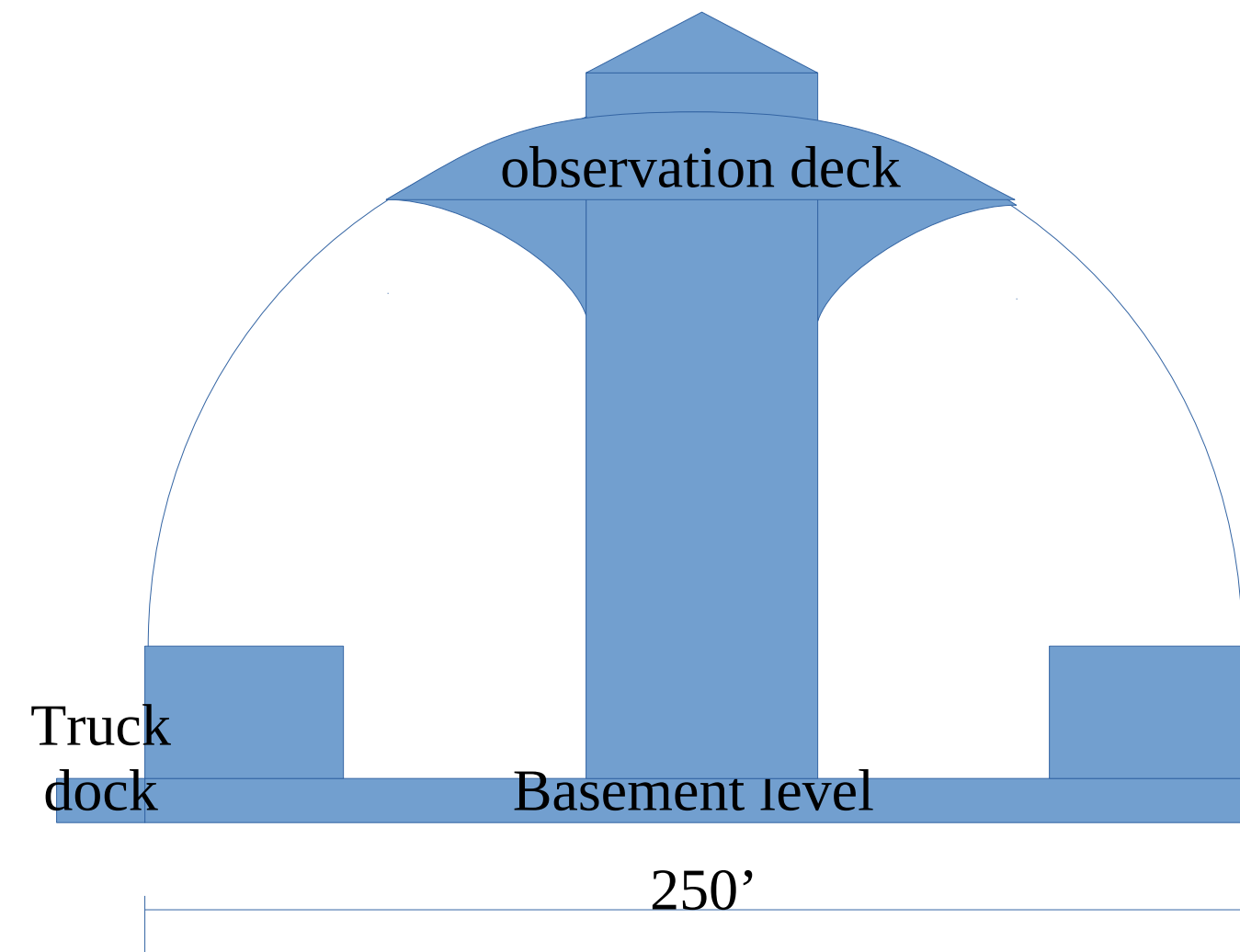
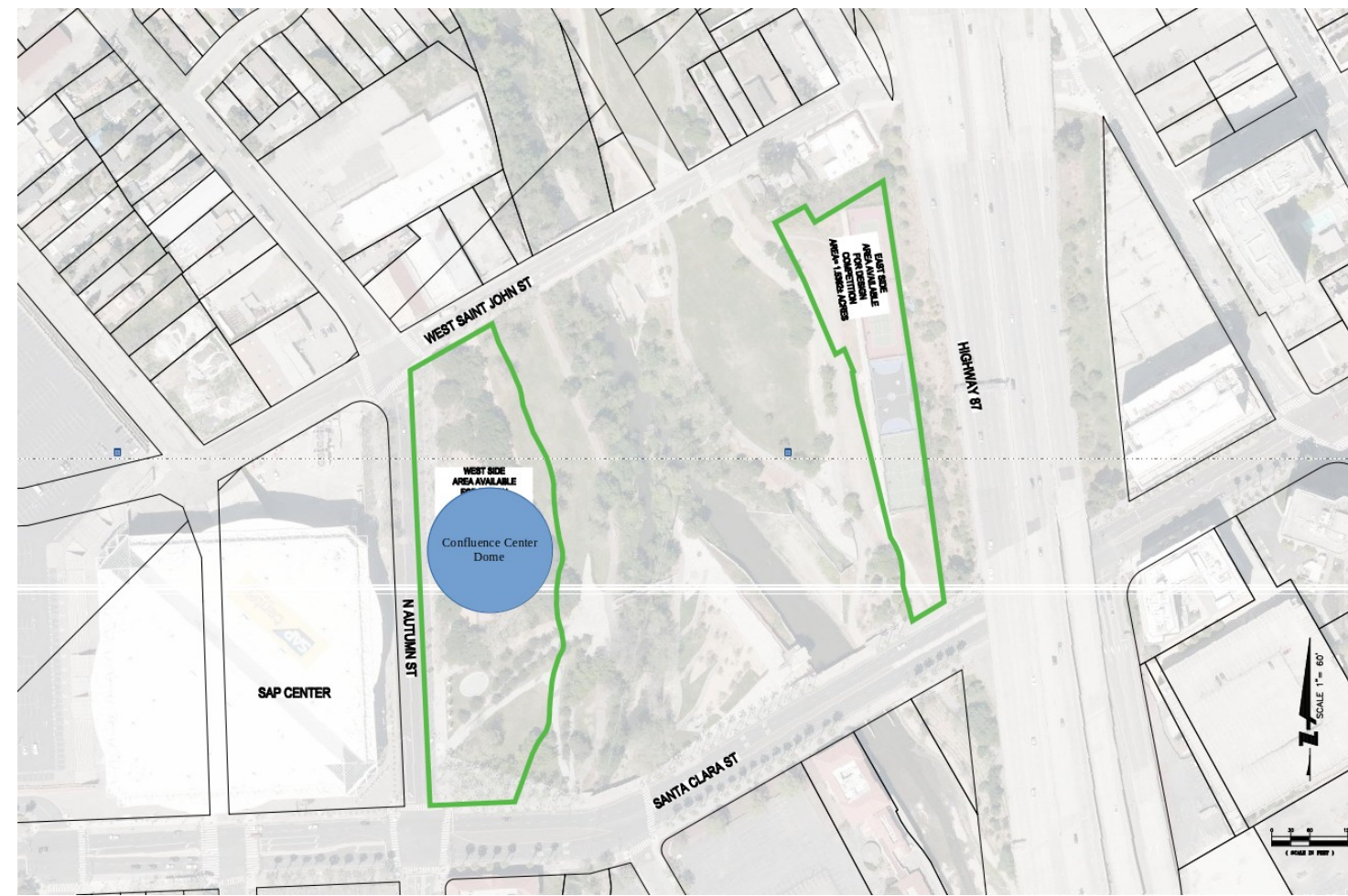
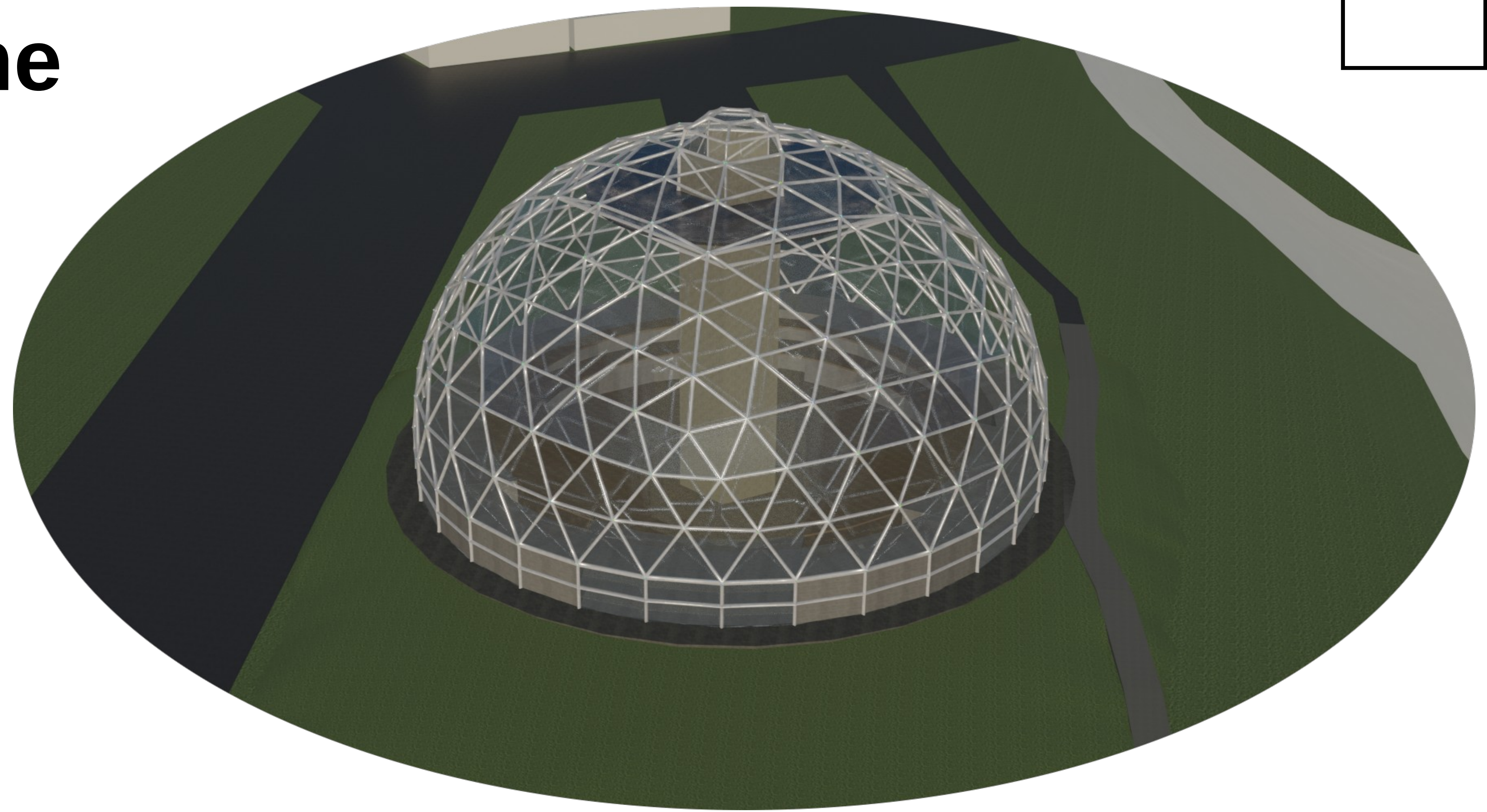


San Jose

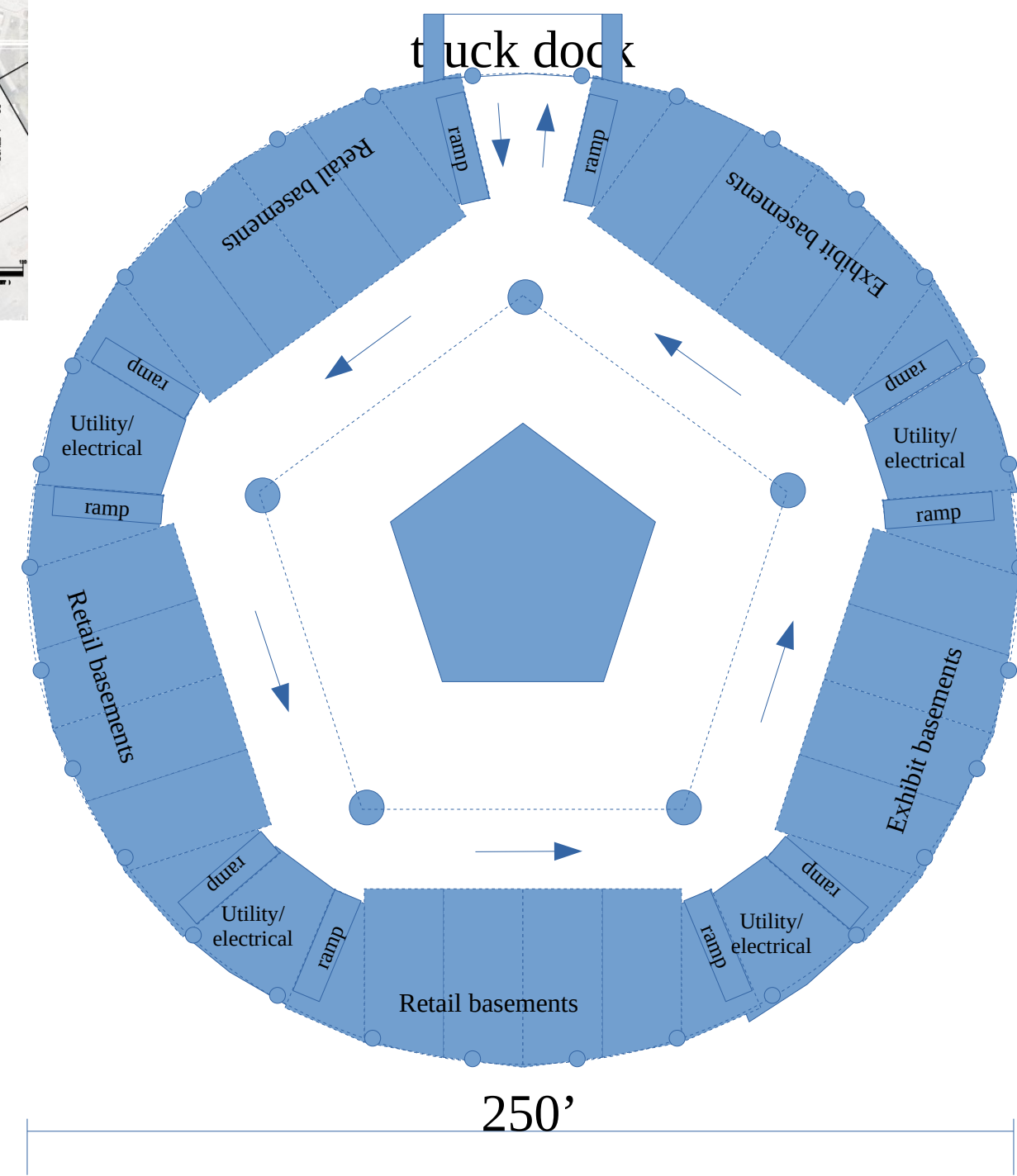
Confluence Center Dome

About the structure

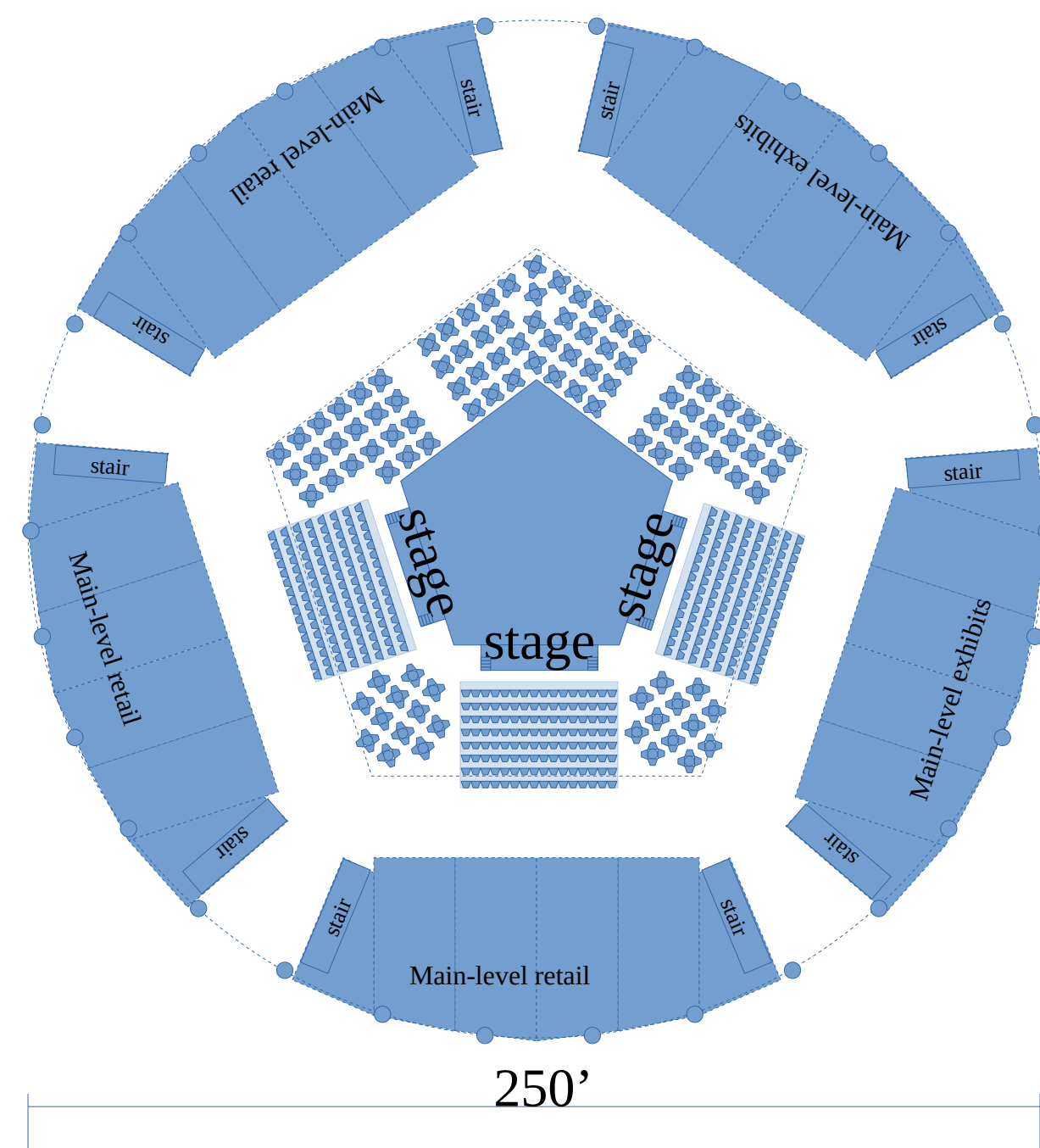
The Confluence Center Dome features an eye-catching 250 foot diameter geodesic dome which stands 170 feet high. An observation deck accessed by elevators in an interior column will attract tourists for its overlook of the Guadalupe River and downtown San Jose. It will act as a confluence for people with rooms for meetings and presentations, exhibits, cafes, a tourist gift shop and retail shop spaces. LED lighting at each vertex of the dome can make many visual patterns at night, while controlling brightness for the environment. This vision lends well to technical or cultural gatherings.



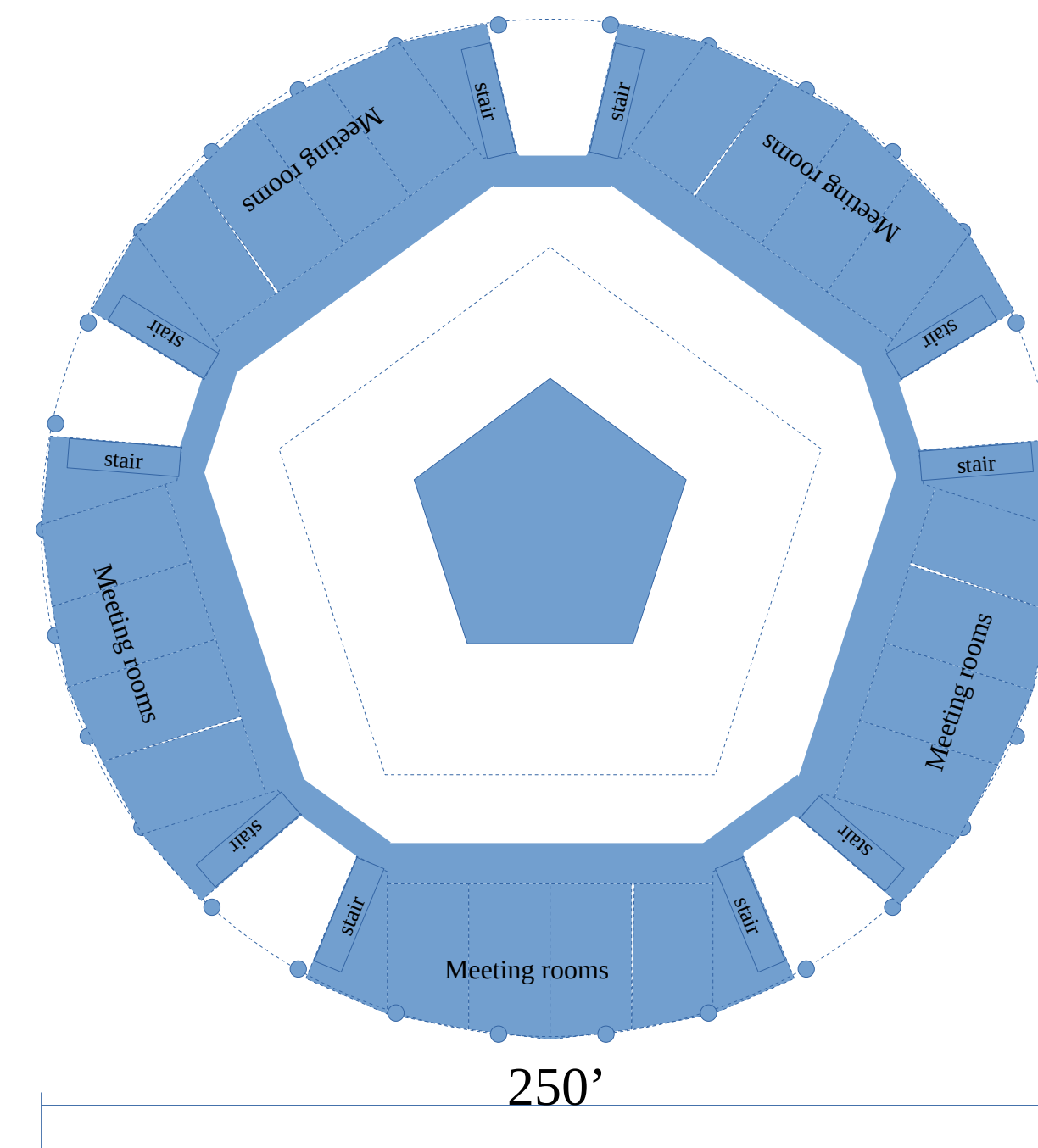
Vertical profile



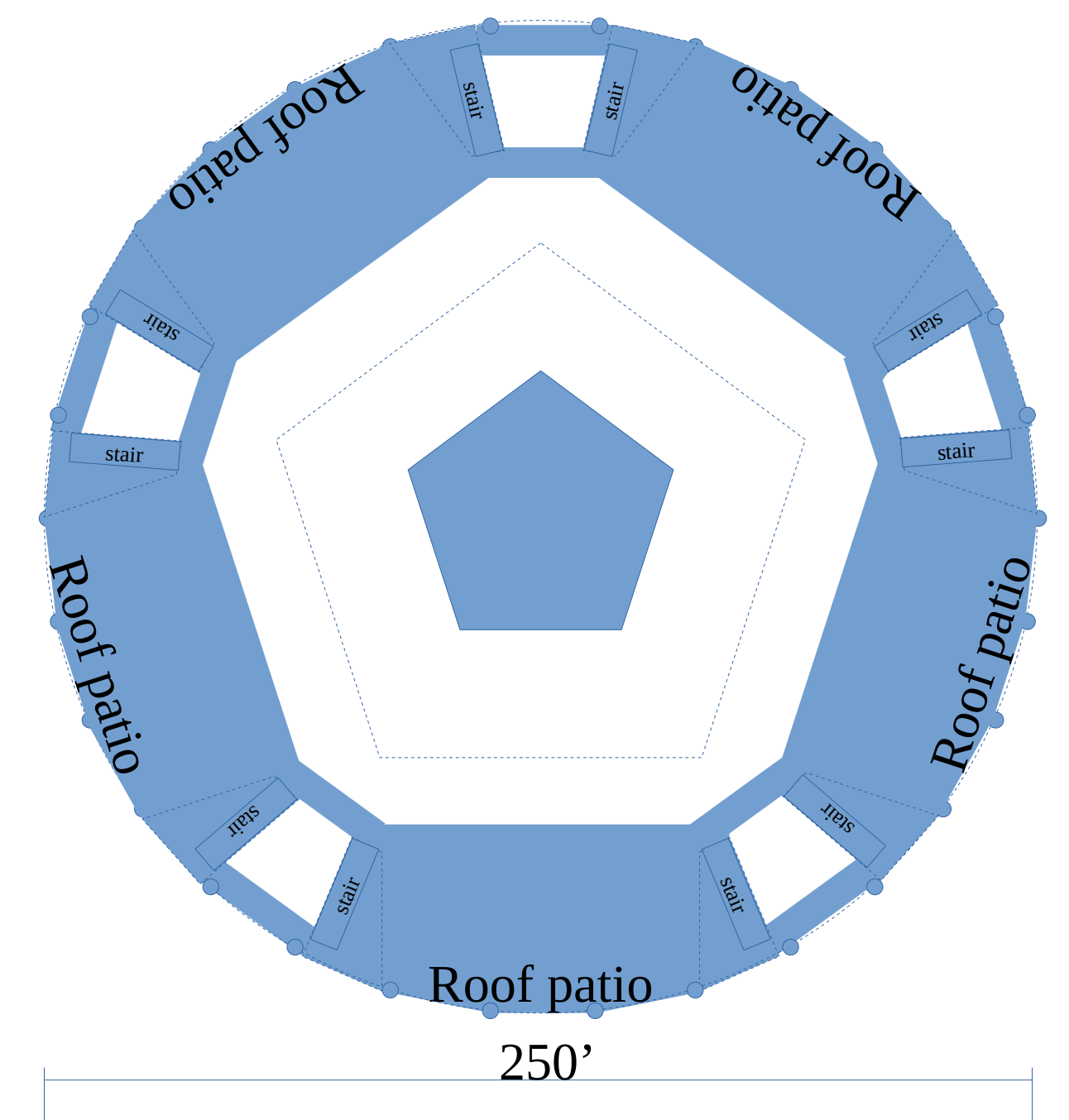
Ground level/basement



Main/entry level



Meeting/exhibit level



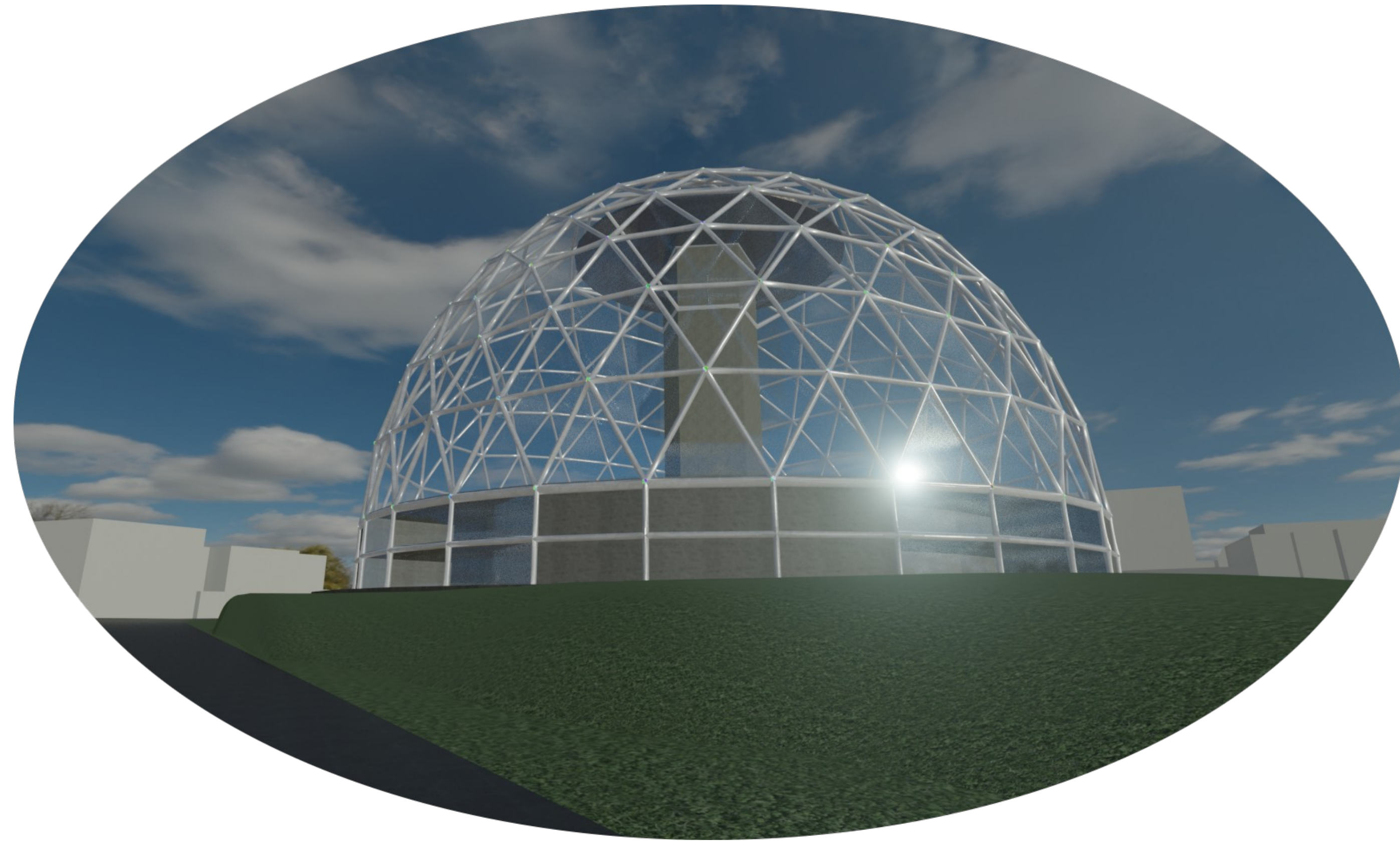
Patio level

San Jose

Confluence Center Dome

A new icon of Silicon Valley

The Confluence Center Dome will be an iconic landmark for San Jose and Silicon Valley. A geodesic dome will visually stand out from a distance during day or night. LED lighting can project programmable patterns of colors at night. It will serve as a functional structure for tourism and events.

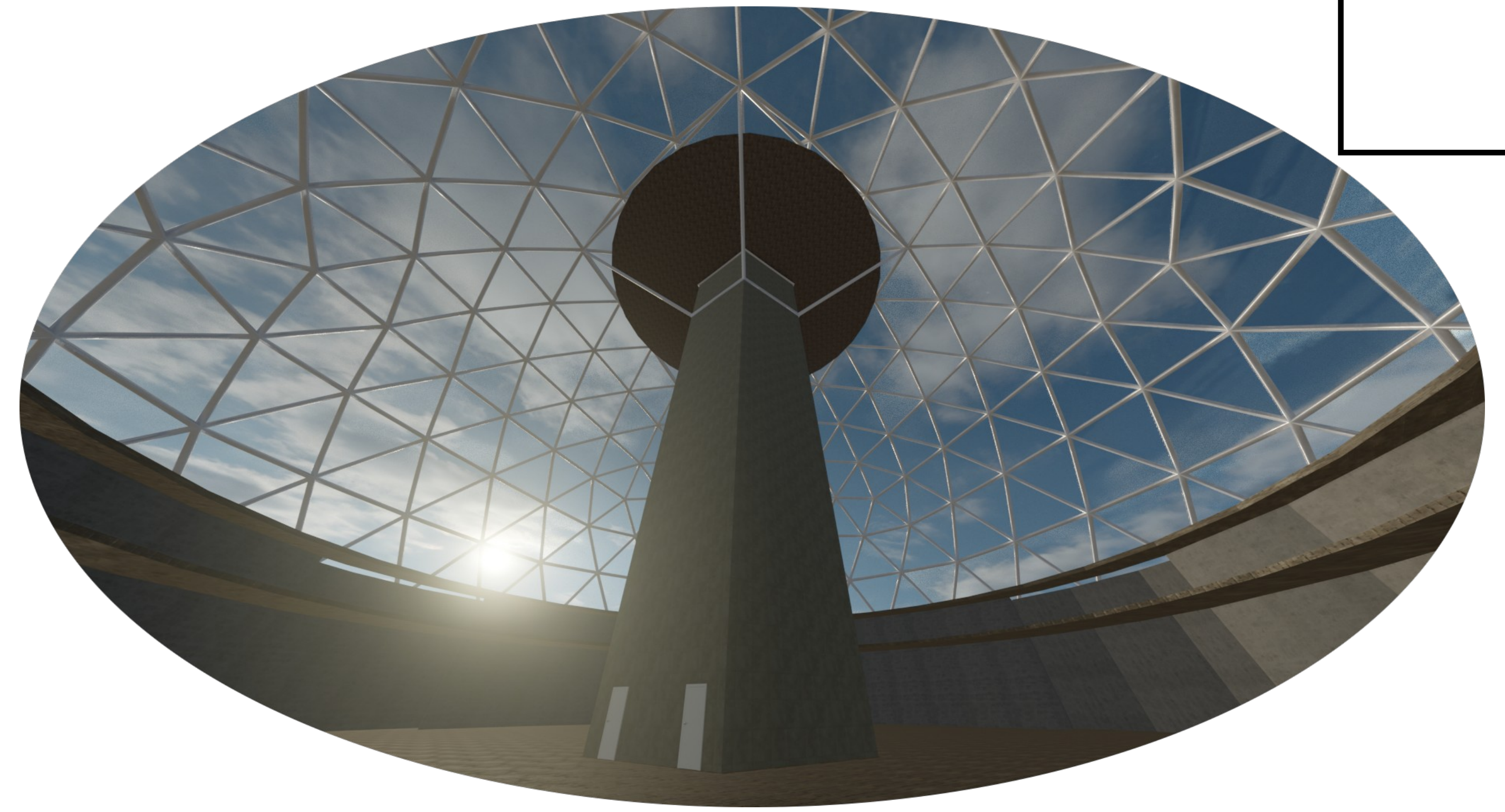


A modern theme for San Jose

The dome on a cylinder style works along with the existing City Hall rotunda dome to make a theme that can extend across the city to smaller symbolic structures at community centers.

Celebration of Silicon Valley culture of innovation

Meeting venues can host tech talks, conferences, Maker community demonstrations, as well as cultural events other than tech.



A confluence for people

- Observation deck
- Meeting & presentation venues
- Exhibit areas
- Tourist gift shop
- Ground-level retail/cafes

Friendly to the surroundings

- Solar panels on south-facing horizontal dome struts, capacity for 110kW+
- Covers above LED lights prevent shining upward

