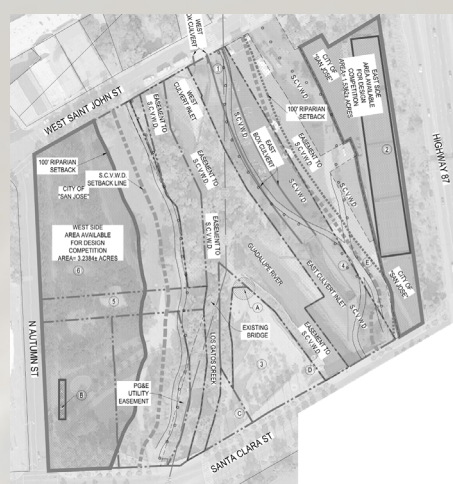


LOCATION



AREA AVAILABLE: Approx. 5 ACRES
Arena Green, San Jose, CA, USA.

The Guadalupe River runs from the Santa Cruz Mountains (which separate the South Bay from the Pacific Coast) flowing north through San Jose, ending in the San Francisco Bay at Alviso. The confluence of the creek and the river is also found in this site which makes it more unique from other green parcels.

WILD X URBAN

MOUNTAIN VALLEY PARK

DESIGN PROBLEMS



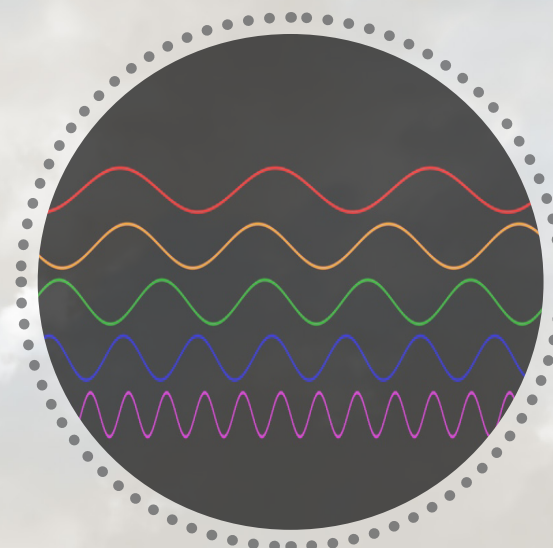
Plane Noise Pollution - The Arena Green situated in an area of high Air Traffic and it is also near the San Jose International Airport. There is a very huge amount of noise pollution that makes people unable to hear whatever happening in the ground. This is one of the problem to the site so it has to be dealt with for the people to be comfortable in the Arena Green. And this may stop people from accessing the site.

Elements of Uniqueness - There are certain unique features for this particular site that has been neither addressed properly nor maintained properly.

Community Participation - There is a very minute contribution of the community to the site because it lacks amenities that attract them.



DESIGN SOLUTIONS



Sine Wave - Reflection, Absorption, and Diffusion - The sine wave is derived for the site extent and it is lofted as a green roof so that it can be green and provide amenities and also acts as a shield which reverberates the plane noise pollution.



Placemaking - The site itself has a large area in the downtown but lacks the sense of public space that doesn't feel alive. The placemaking strategy provides you public spaces that govern and activate people's connections inside the site.



Public Amenities - There are no amenities that neither attract people nor help people earn. These amenities can help you employ the jobless and also improve revenue for the park and also helps community engagement in the site.

DESIGN CONCEPT



CAVE THE AMENITIES

Cave brings us silene and peace and helps us get differentiated from the world, isolated having a good peaceful time. So, the cave from our wild nature is derived to provides us various amenities in this site.



WATERFALLS WATER FEATURES

Waterfalls provide white noise that is pleasant for humans and provide a positive vibration to the surroundings. So, the waterfalls from our wild nature are derived to provide us the manmade waterfalls which isolate us from unhealthy noises.



GEYSERS THE FOUNTAINS

The geysers are both good for spa and it is also a good place to watch and admire its beauty. So, it is derived to improve the status of the unused space to be admired with the beauty of the fountains on the very entry of the site.



MOUNTAINS THE GREEN ROOF

Mountains are majestic and refreshing. So, it is derived from nature to provide you the green roof that goes through most of the site.

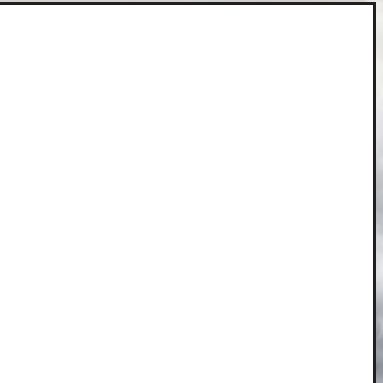
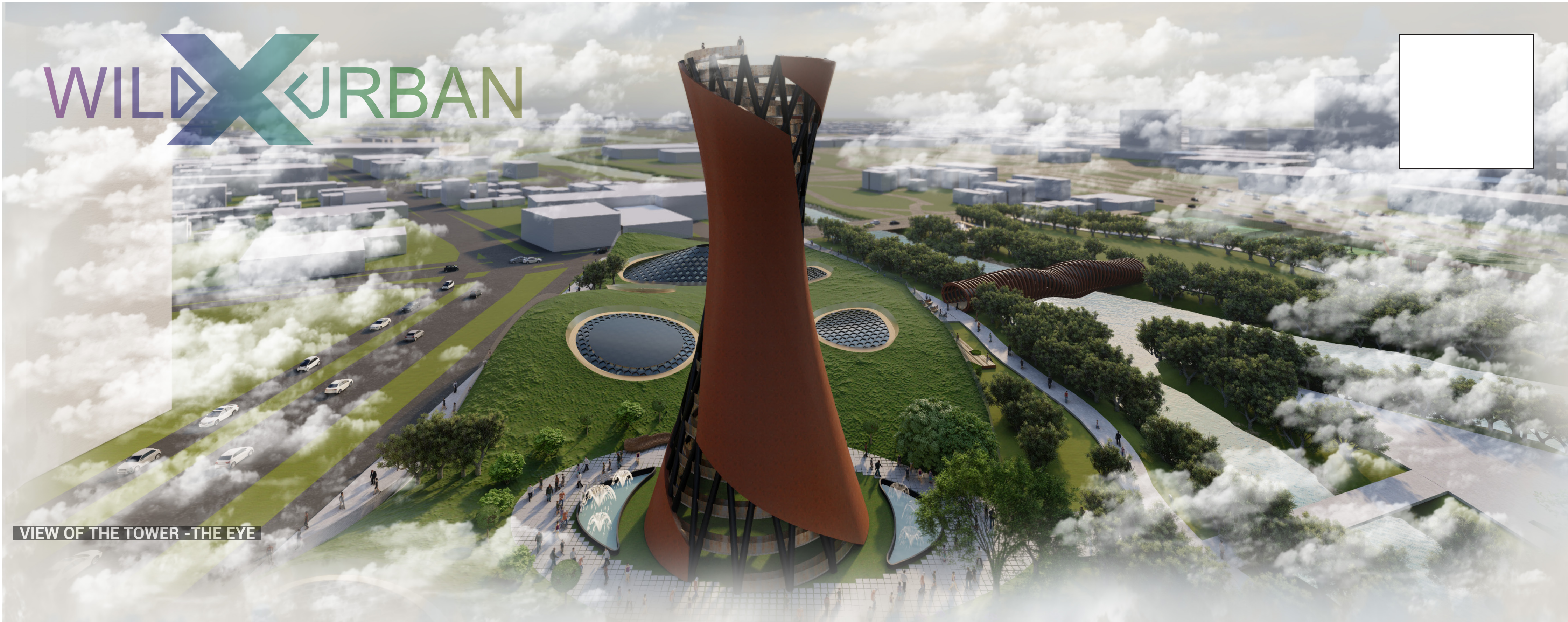


CLIFF THE TOWER

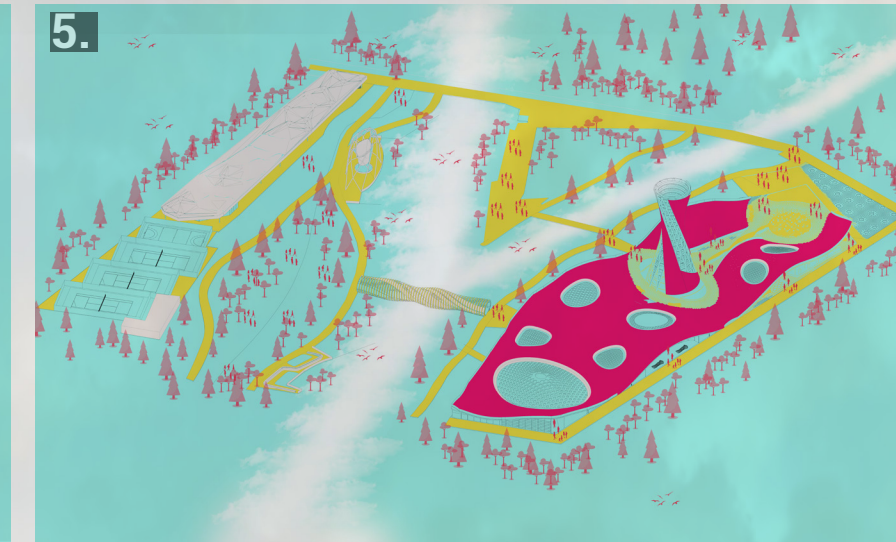
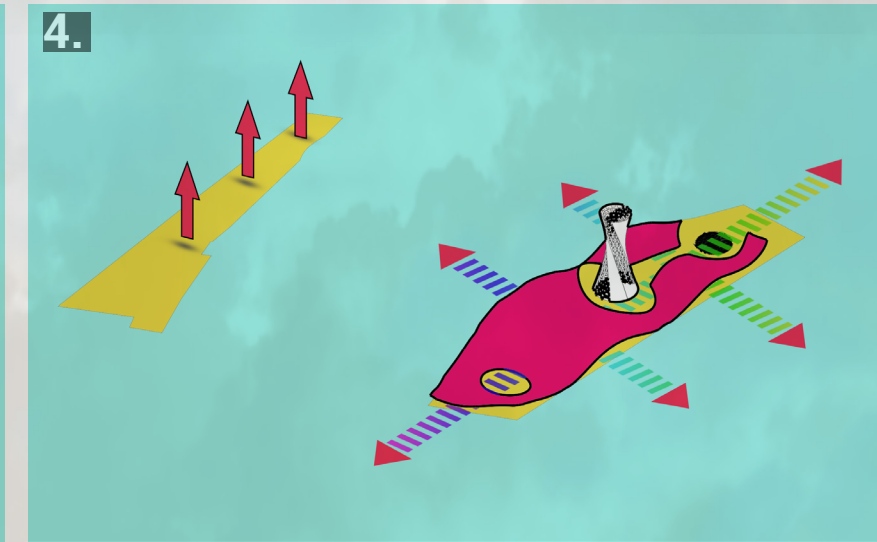
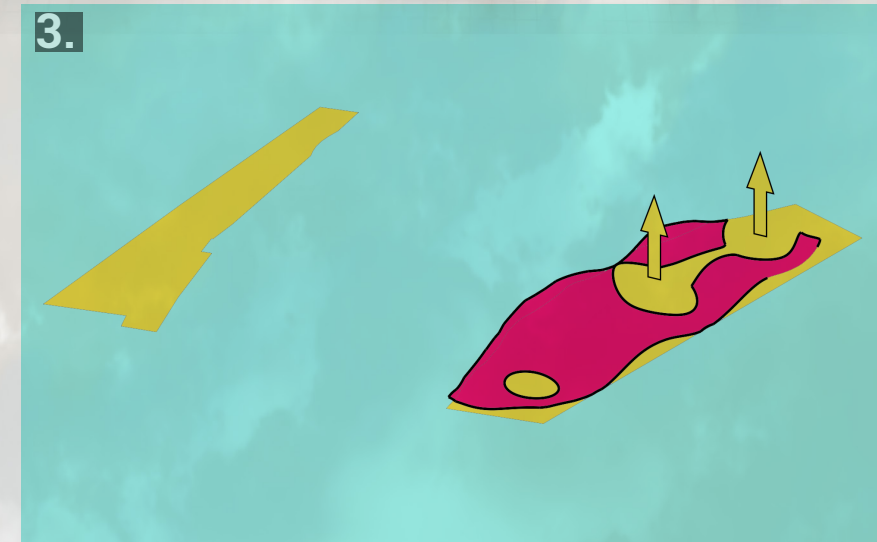
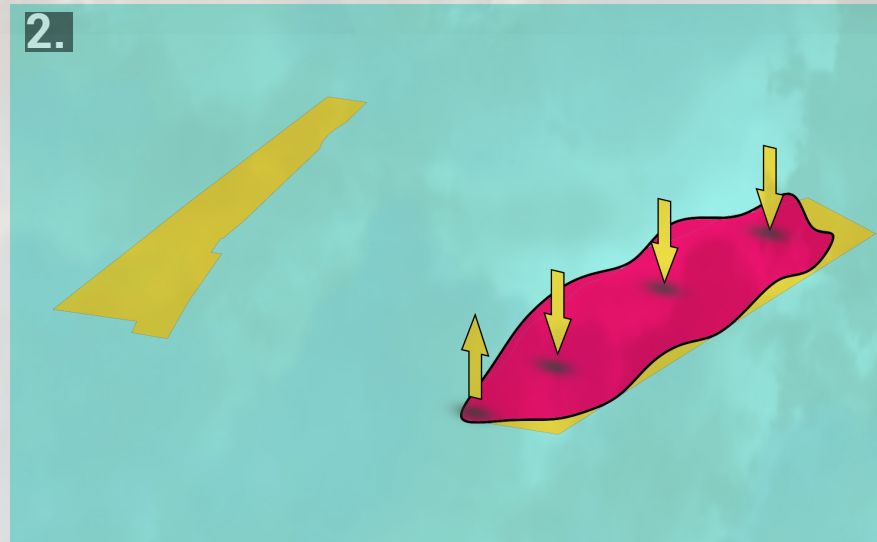
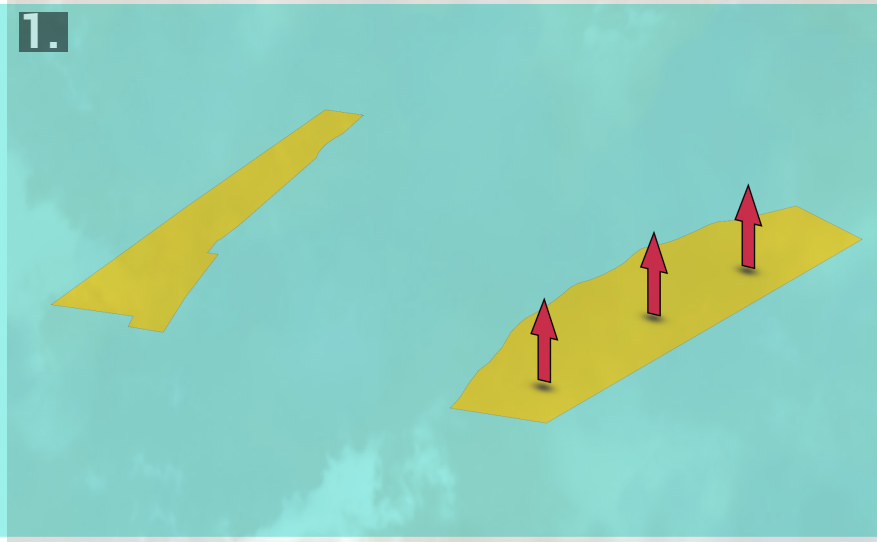
Usually, the cliff is reached through trekking or hiking in wild nature. So, it is also derived to provide the trekking experience to reach the top of the tower.



WILD X URBAN



VIEW OF THE TOWER - THE EYE



The site boundary has been taken into account and the bounding line has been moved according to the sine wave.

The sine wave that has been produced is lofted to produce a roof structure. And it has been adjusted in a way to produce useful spaces.

The next process is to add some unique features and implementing new spaces that can motivate people to come to the site.

The next is the pre-final stage of the form evolution. In this, you validate area, circulation, roof heights, etc. so that the functions are uninterrupted.

The final process is to add aesthetics and solve crucial errors and finalize the materials that are required for the design to look aesthetic.



VIEW OF THE WATERFALLS These are the views of the various amenities and unique features that have been introduced to the site to improve the communal activity for the park such as an amphitheatre, food court, library, gym, the eye tower, etc.



VIEW OF THE OAT



SITE PLAN



VIEW OF THE FOUNTAIN AREA



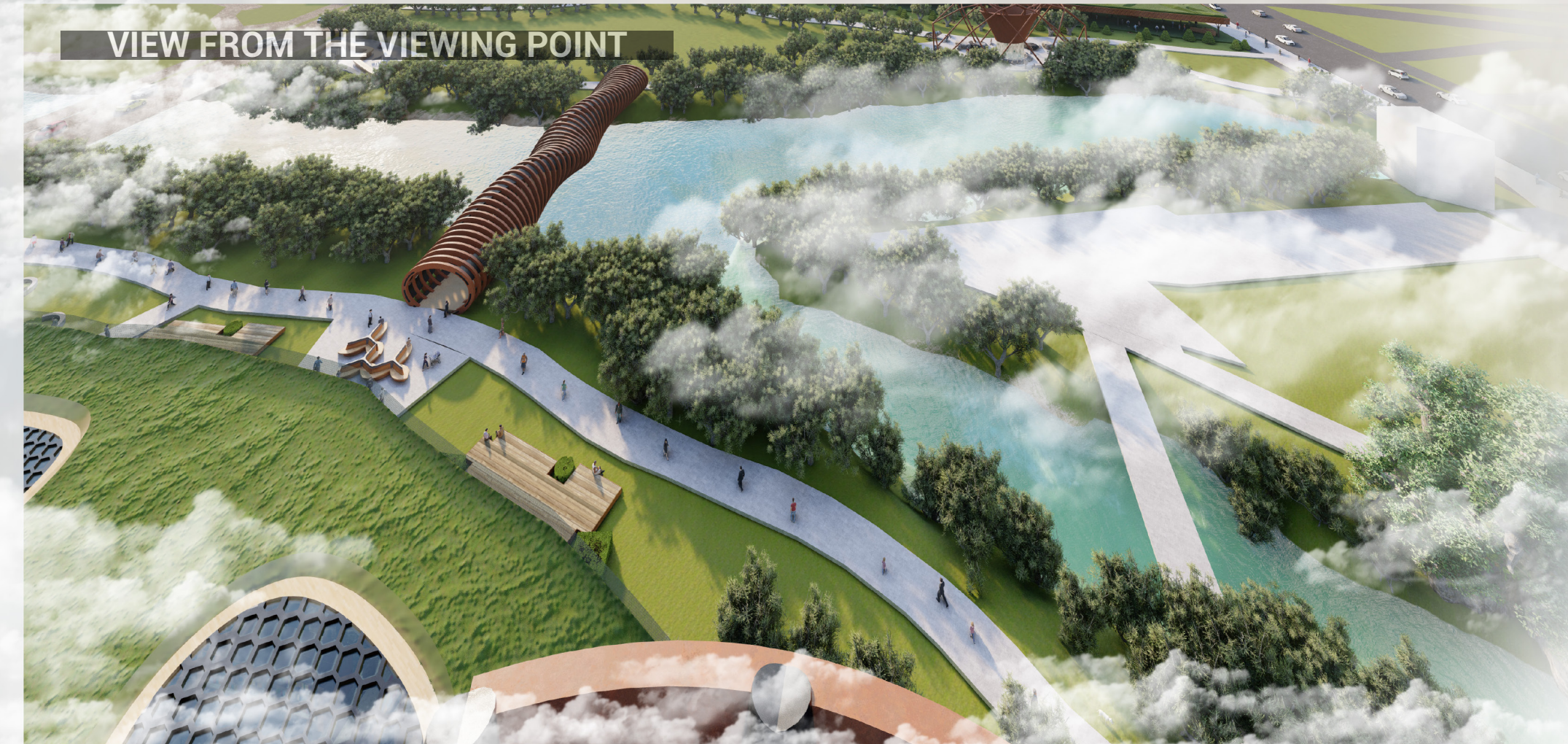
VIEW OF THE TWIST BRIDGE



VIEW OF THE SEATING AREA



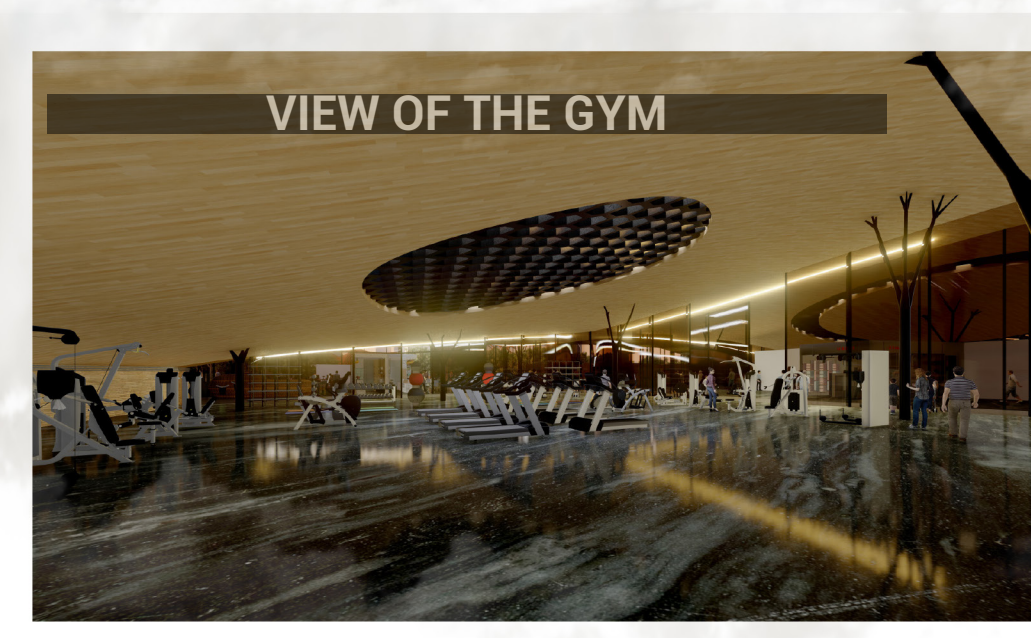
VIEW OF THE FLOWER GARDEN



VIEW FROM THE VIEWING POINT



VIEW OF THE VISITOR'S CENTRE



VIEW OF THE GYM



VIEW OF THE SHOPPING AREA



VIEW OF THE LIBRARY



VIEW OF THE FOOD COURT