

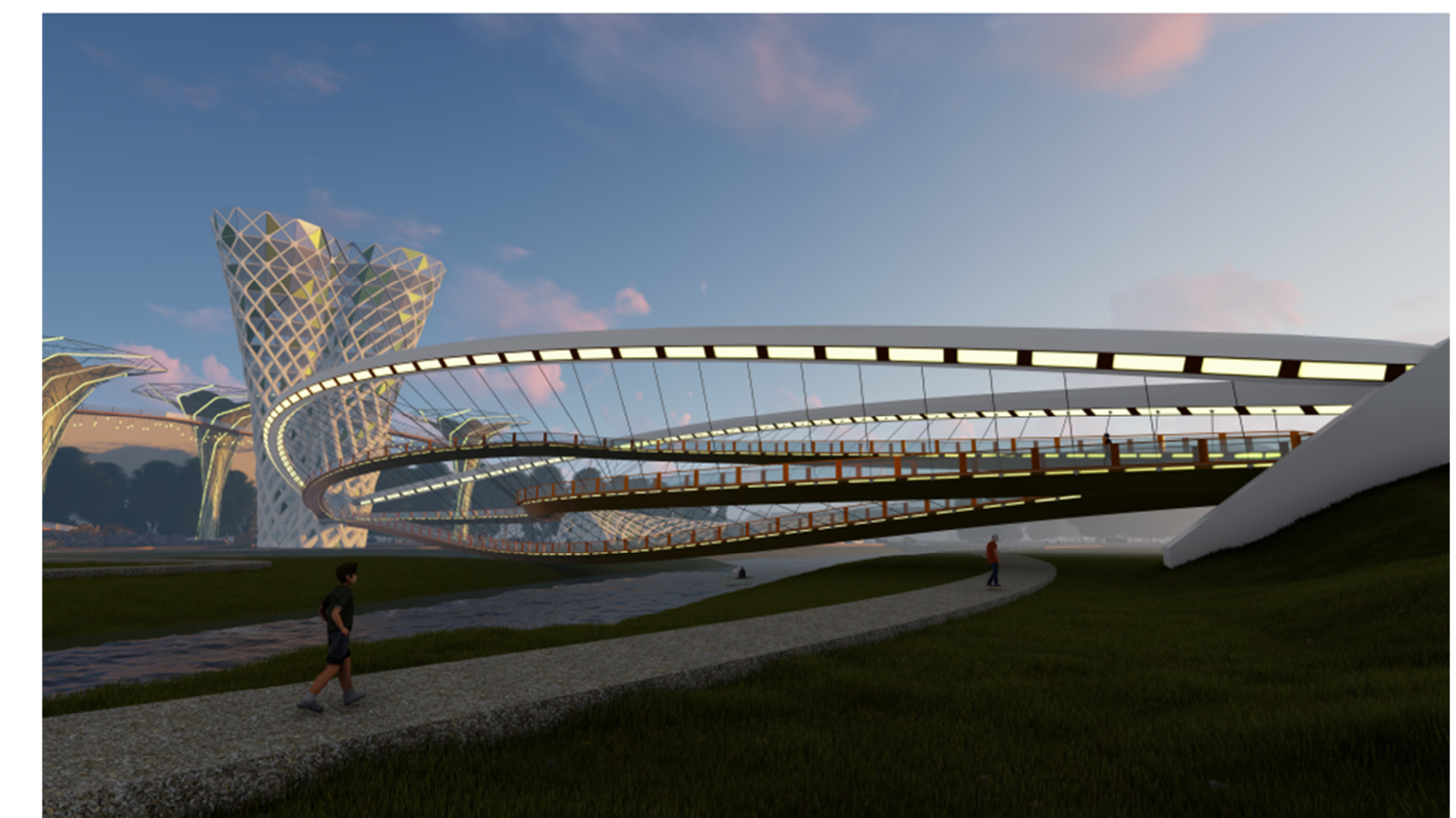
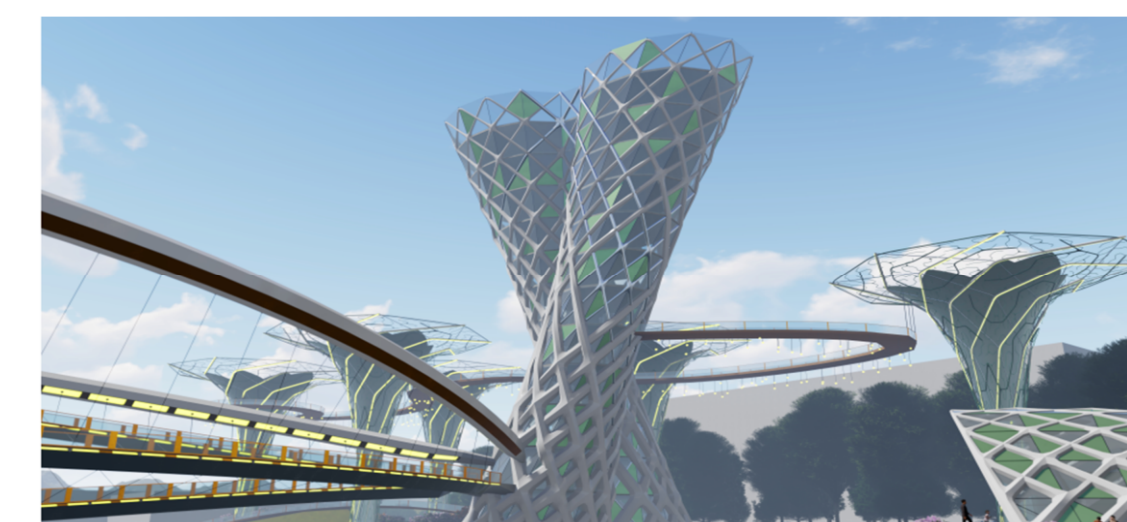
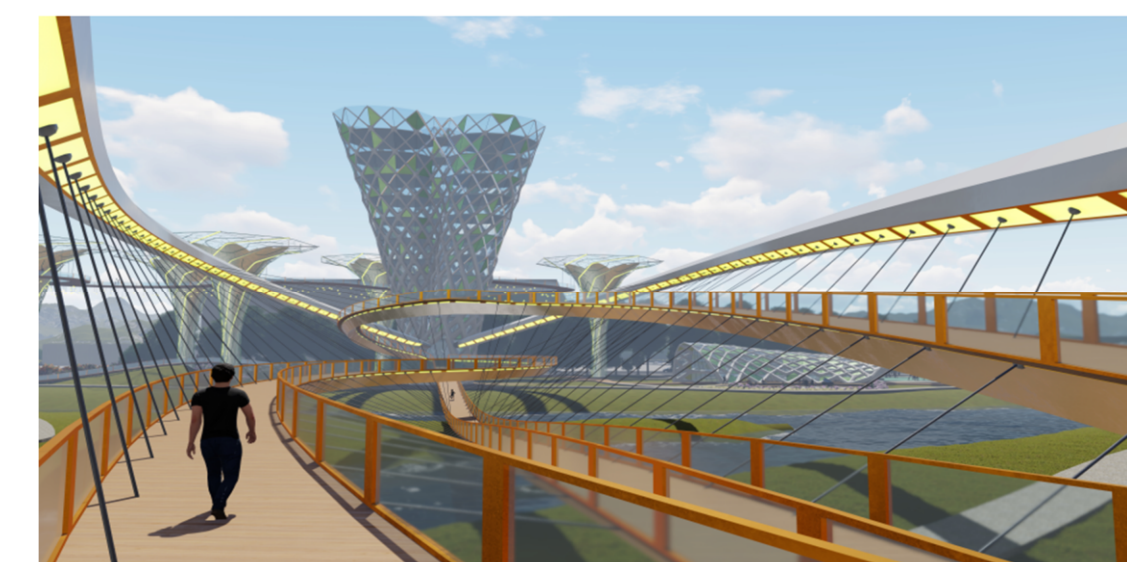
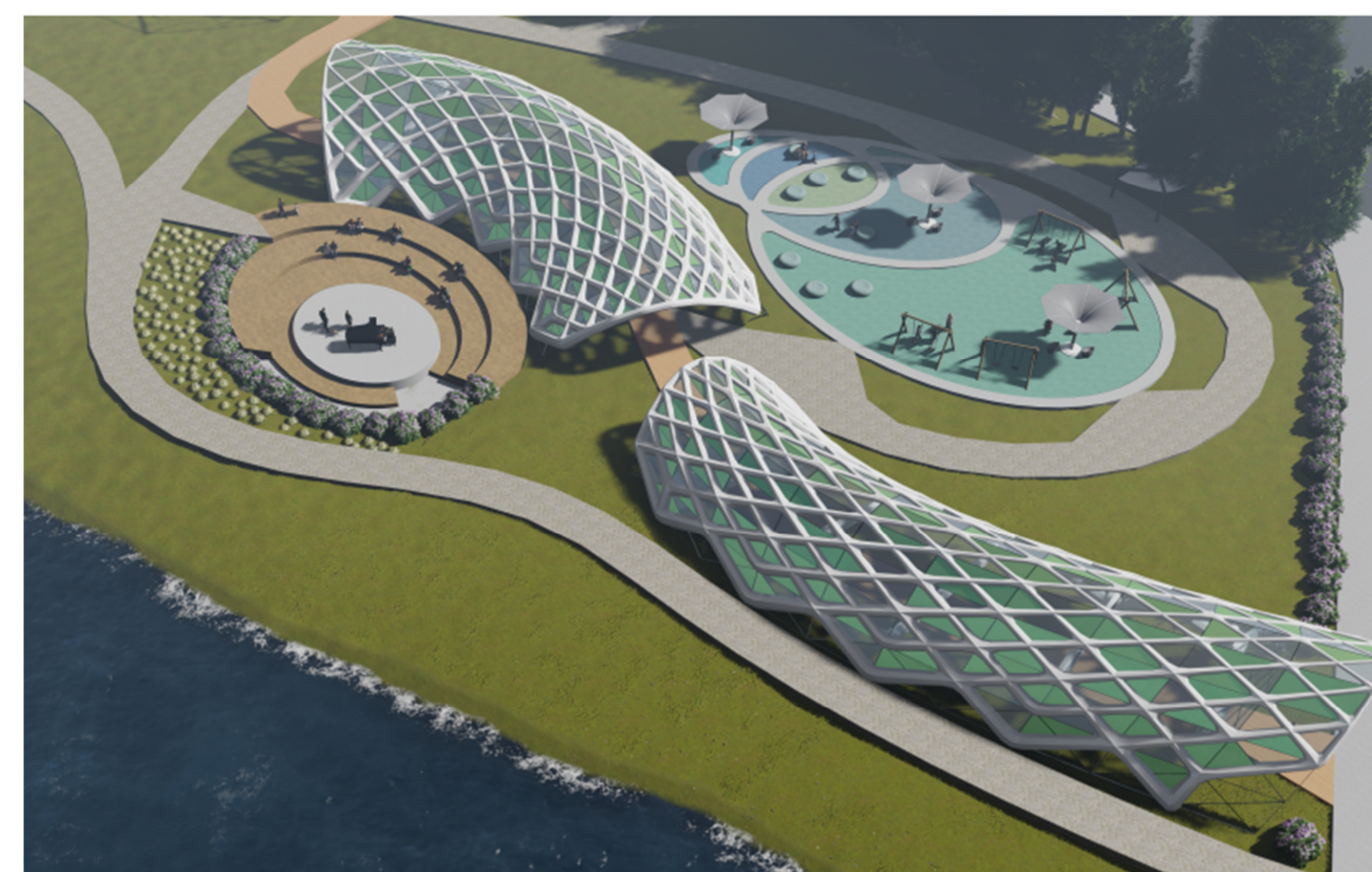
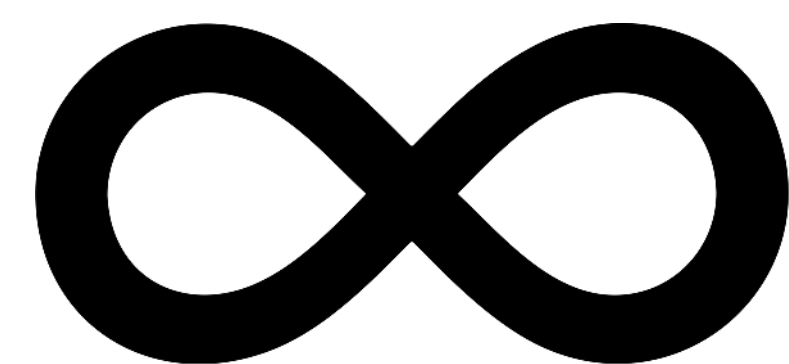
ETCHING PAST, PRESENT AND FUTURE

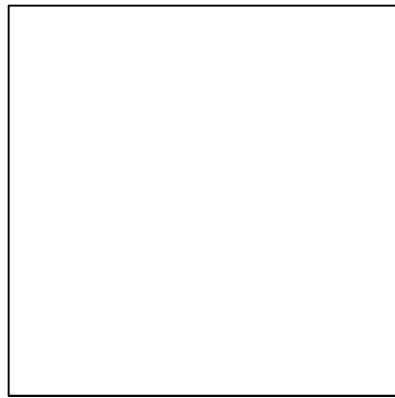
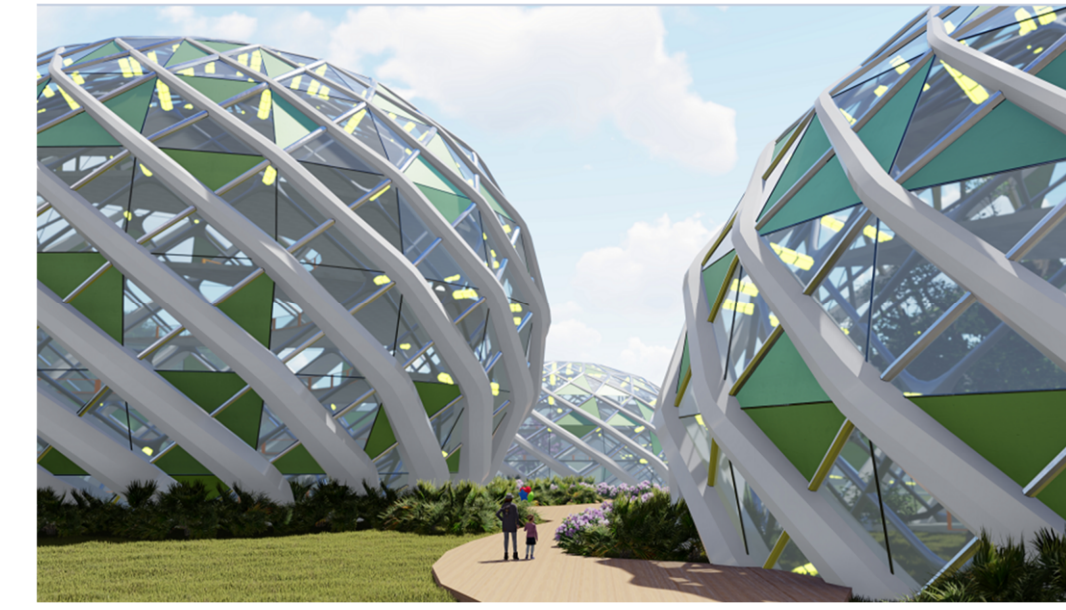
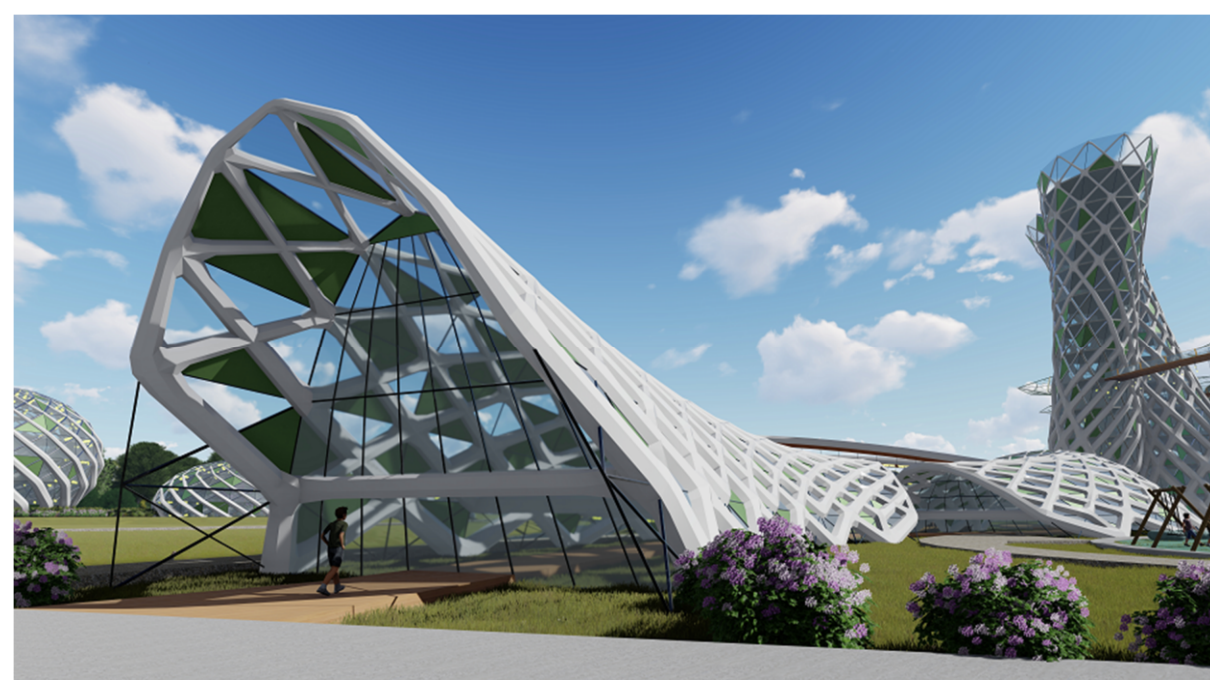
PROJECT SUMMARY

The Silicon Valley region's past, present and future has been intertwined with its naturally abundant silica resources. In homage to the region's native population, the Ohlone, this project incorporates their creation story of the Coyote, Eagle and Hummingbird. The site is divided into three integral paths which focus on the formative principles of the mythology. This historic identity is transfused with the infinity symbol, evoking the sense of eternal innovation of the region. The site serves as an icon for the future as we highlight how modern innovation has largely stood on the shoulders of past giants.

OHLONE MYTHOLOGY TRIAD

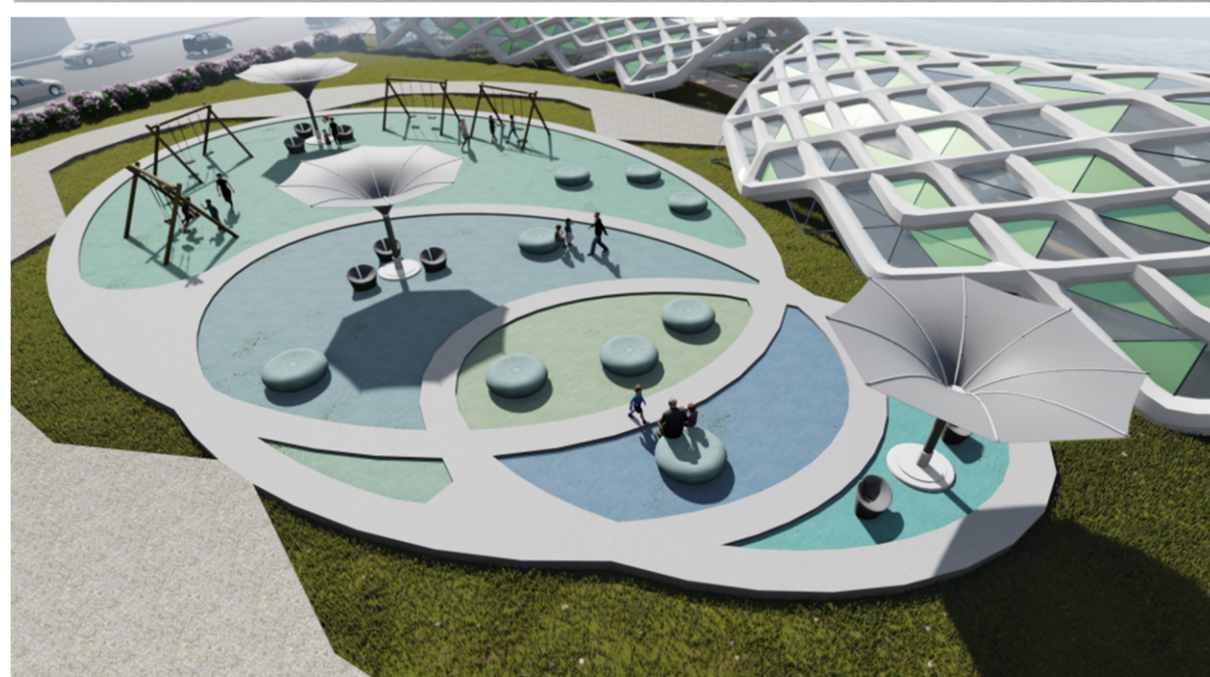
Central to the history of the Bay Area, the Native American Ohlone people believed that the Coyote, Hummingbird, and Eagle were pivotal figures in the creation of the world. Our project explores this theme and intertwines the rich history of the Ohlone people with this cultural landmark.





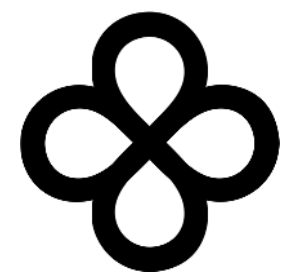
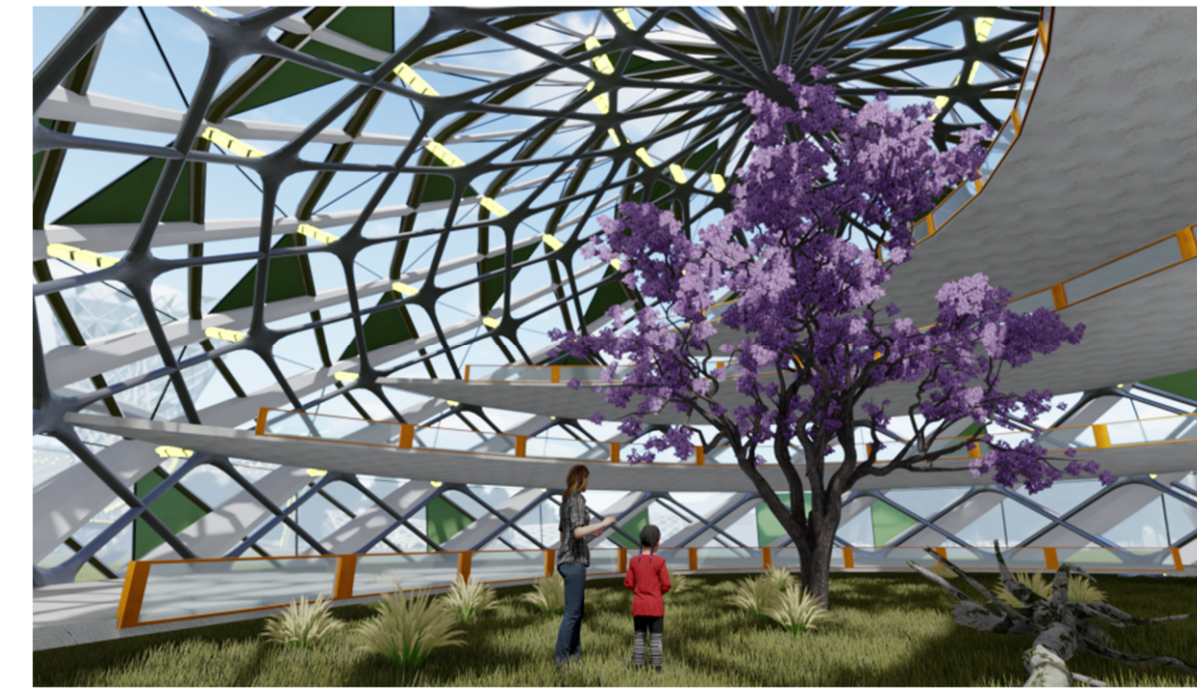
COYOTE PATH

Coyotes, like humans, are social creatures that explore their world in bands. The Ohlone people spoke of how the coyote was the first parent to the human race and was responsible for teaching humans the ways of life. This tradition is brought forth in our project by including a recreational area for children, along with an amphitheater focused on educational events.



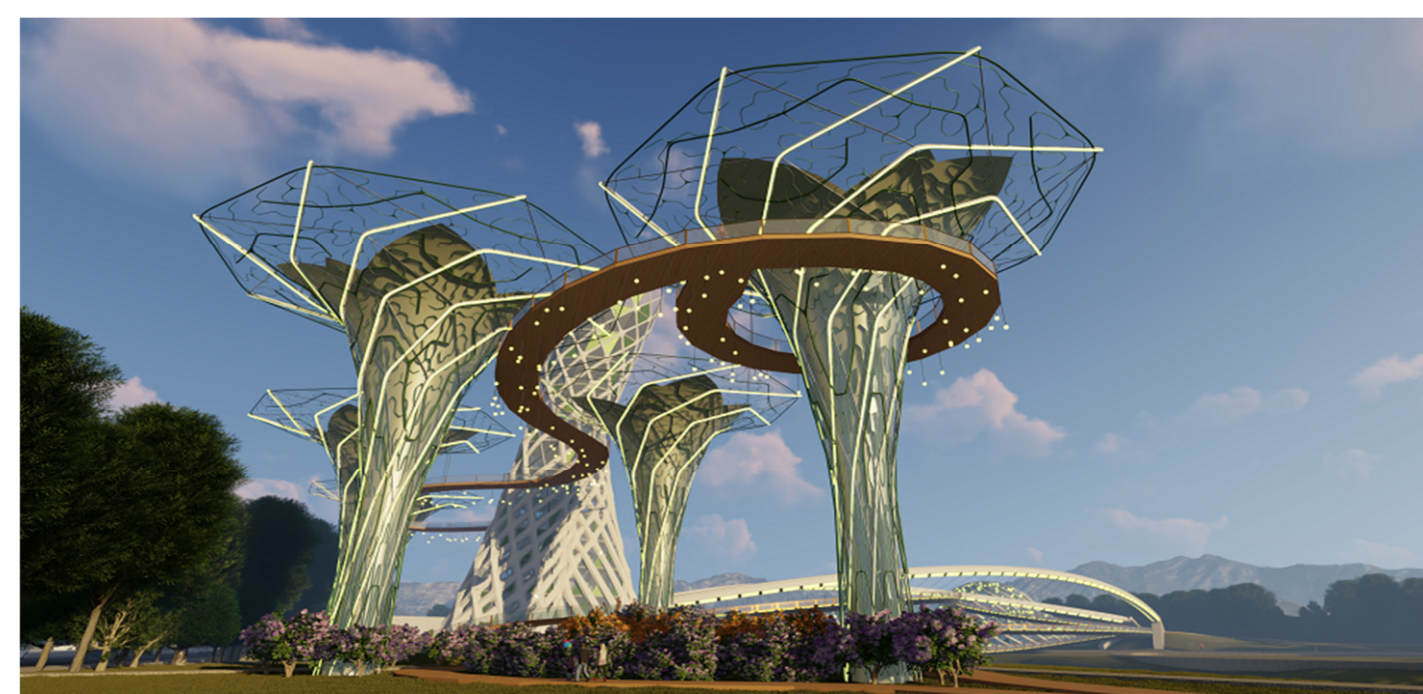
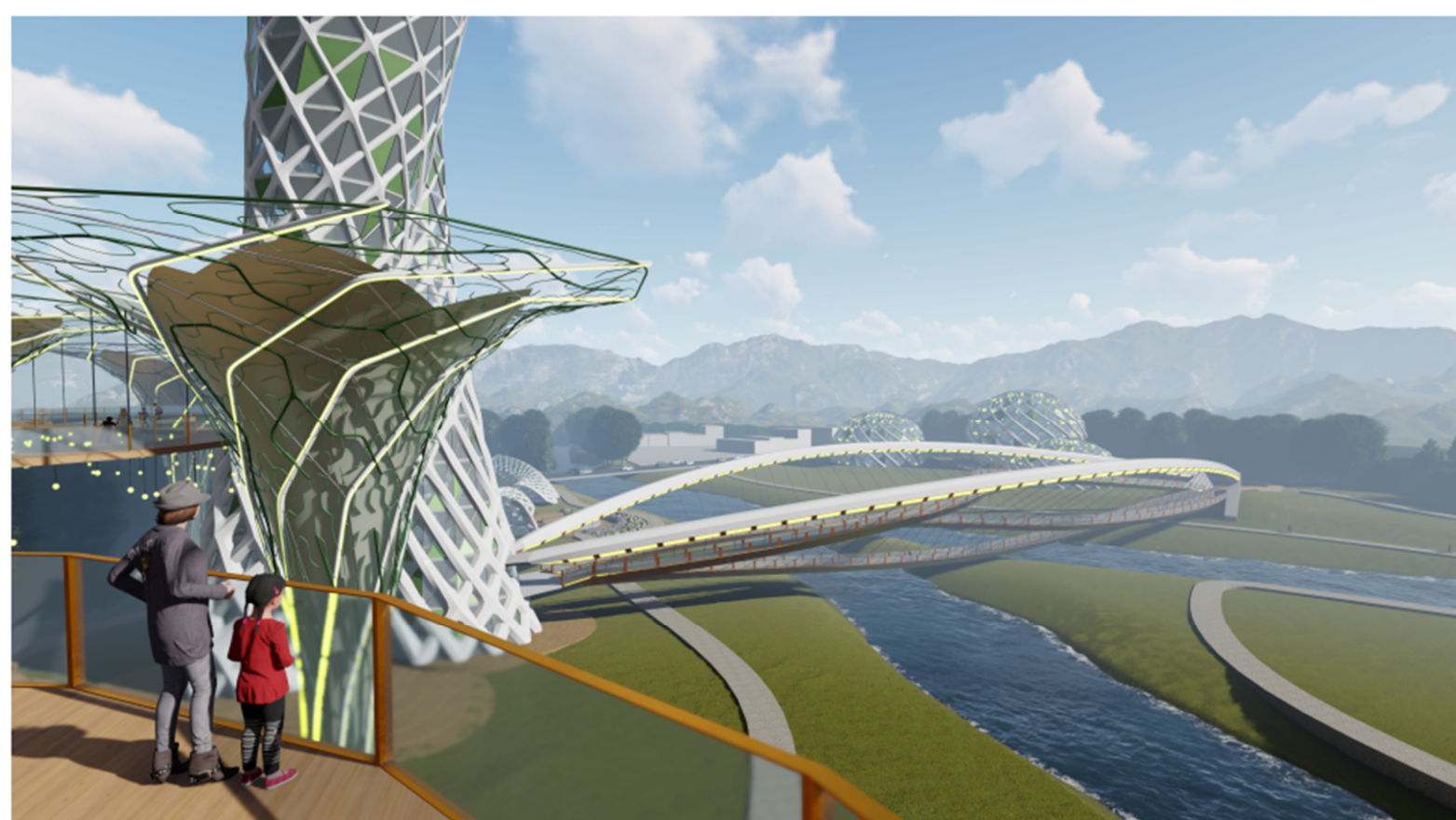
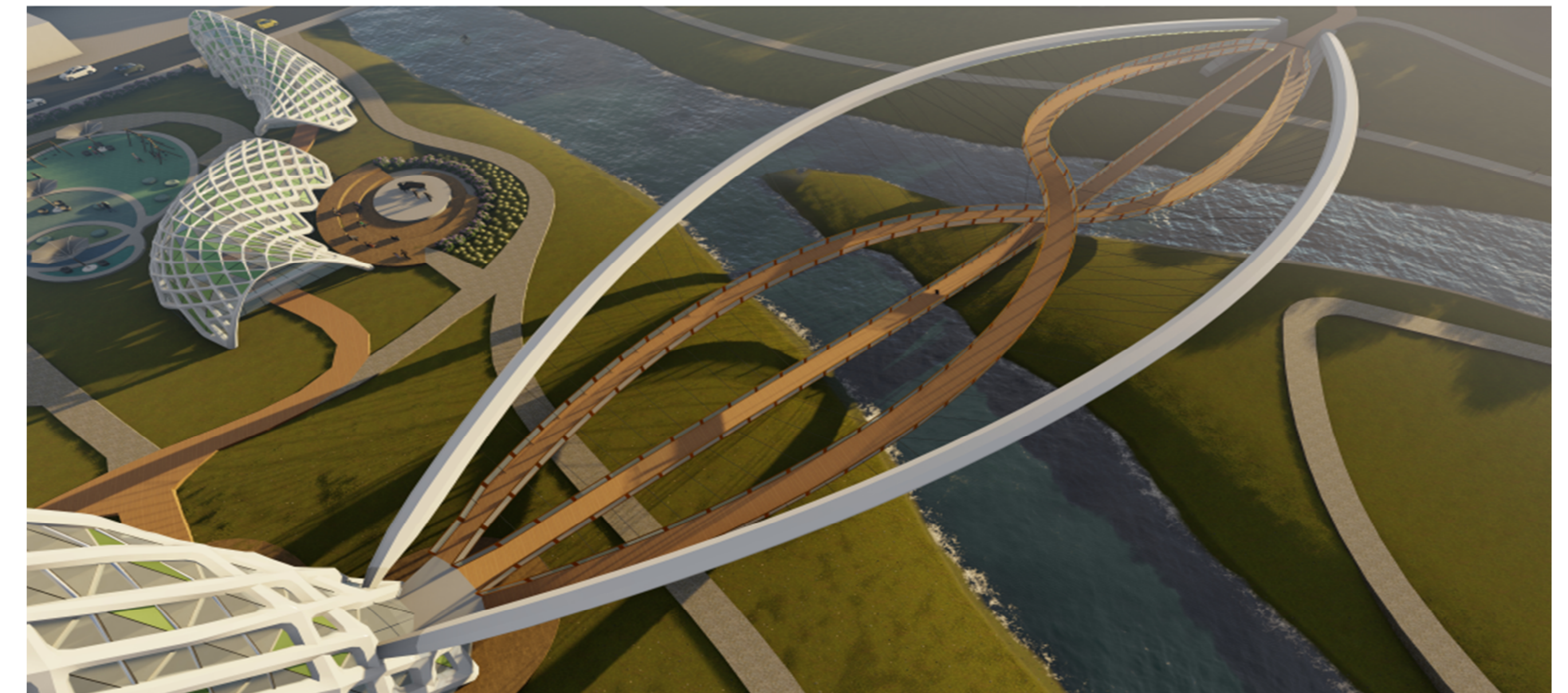
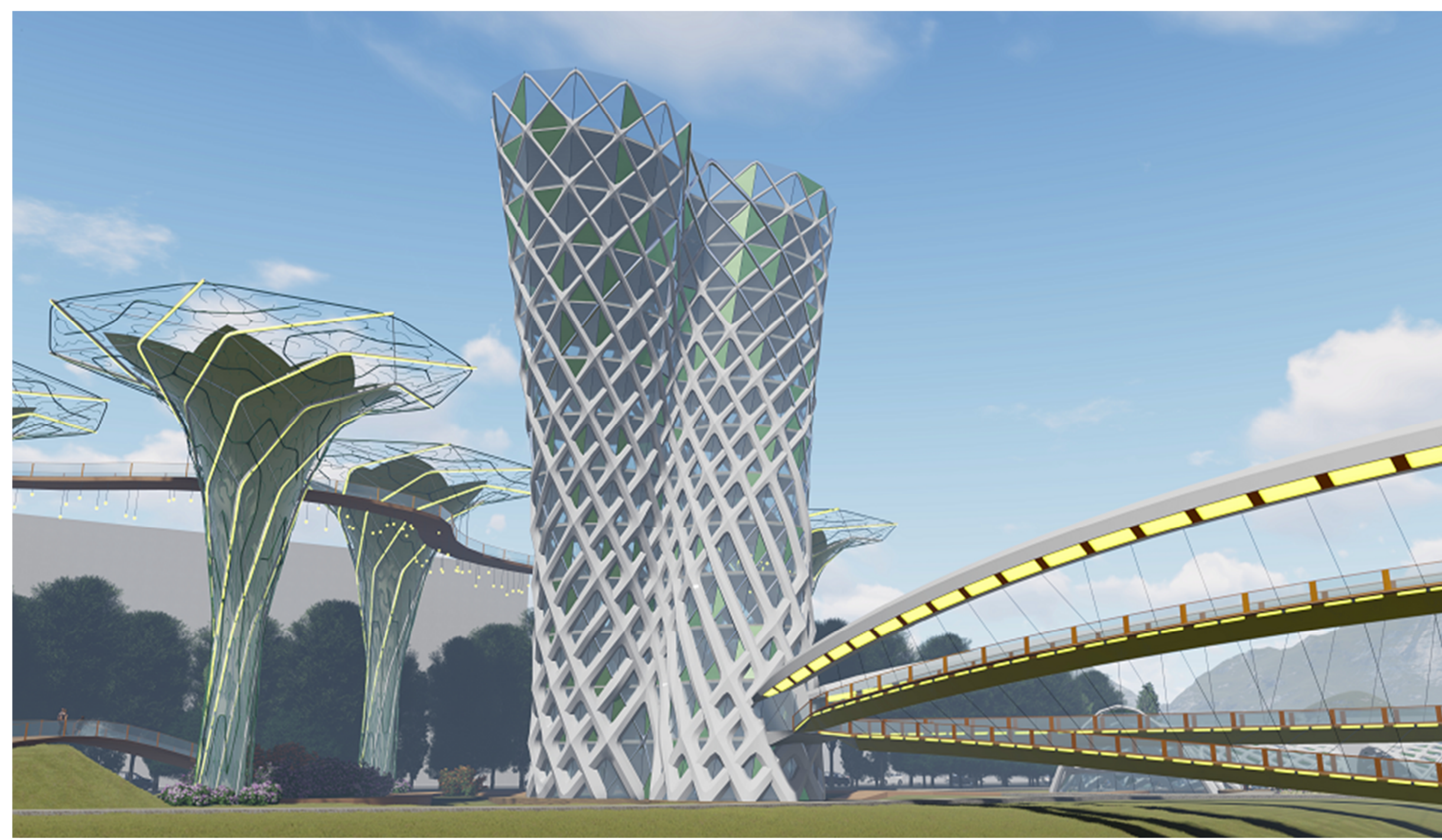
EAGLE PATH

The Eagle pathway is comprised of a series of geodesic domes that represent the three timelines of humankind: the Past, Present, and Future. The Past will focus on the Ohlone people and the early settlers of the area, while the Present will highlight the sweeping technological advancements that have arisen from the region. Finally, the Future will offer glimpses into the technologies and ideas that may not be prominent today, but are aspirations and goals for tomorrow. Soaring over the Guadalupe river, our bridge represents the Eagle's journey across far distances.



INFINITY TOWER

At the convergence of the three paths, a tower of opportunity propagates the infinity symbol at ground level into the sky, twisting as it ascends. Within, a playground of human innovation is on display, with museums sharing the humble beginnings of some of the most transformative technology companies and civilizations. The tower will also serve as an arena to showcase urban technologies such as vertical farming, autonomous drones, renewable energy alternatives and more.



HUMMINGBIRD PATH

The hummingbird darts between these "towers", visiting each unique flower for a short time. Each of these "towers" can have a rotating theme of displays

