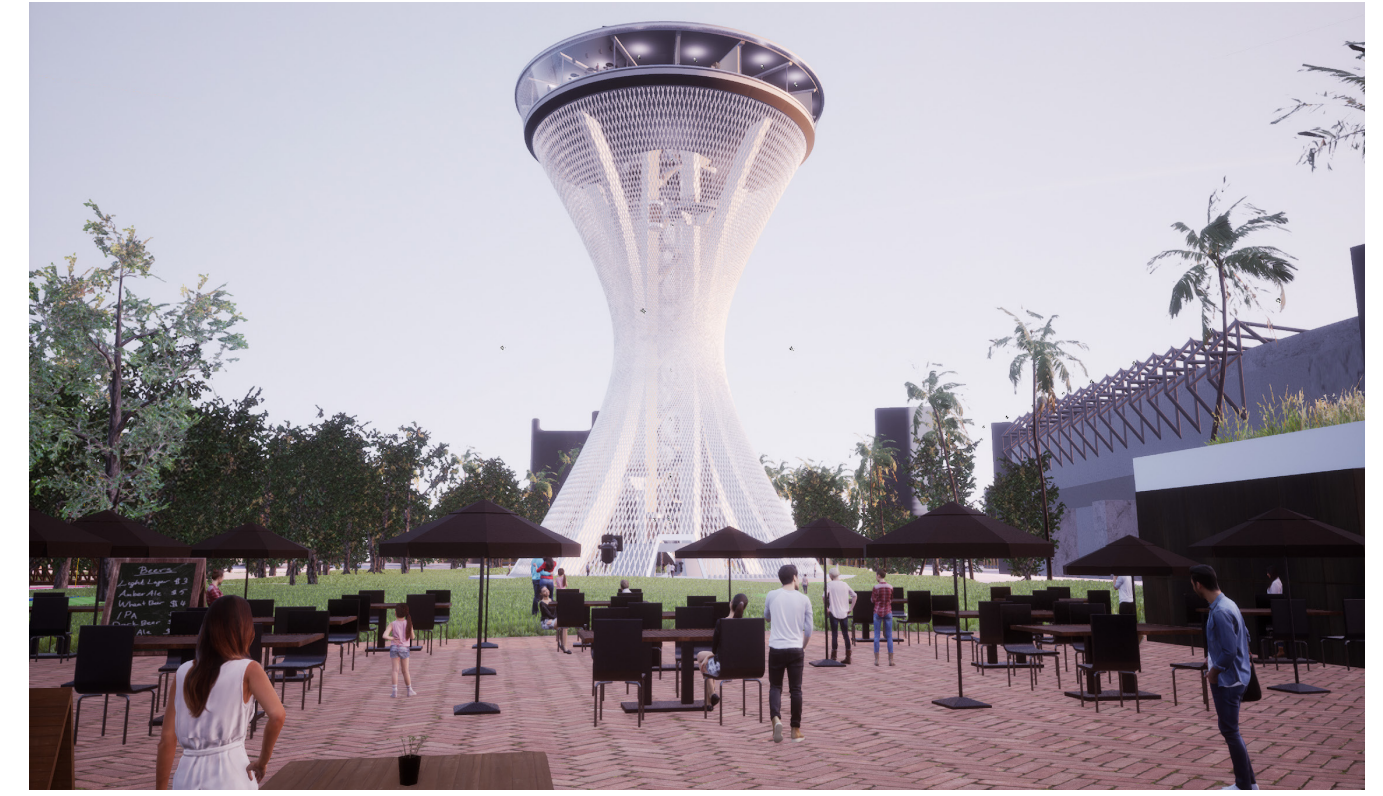


TOWER CYCLE

An animated, interactive hourglass-shaped landmark for San Jose



View from Guadalupe River



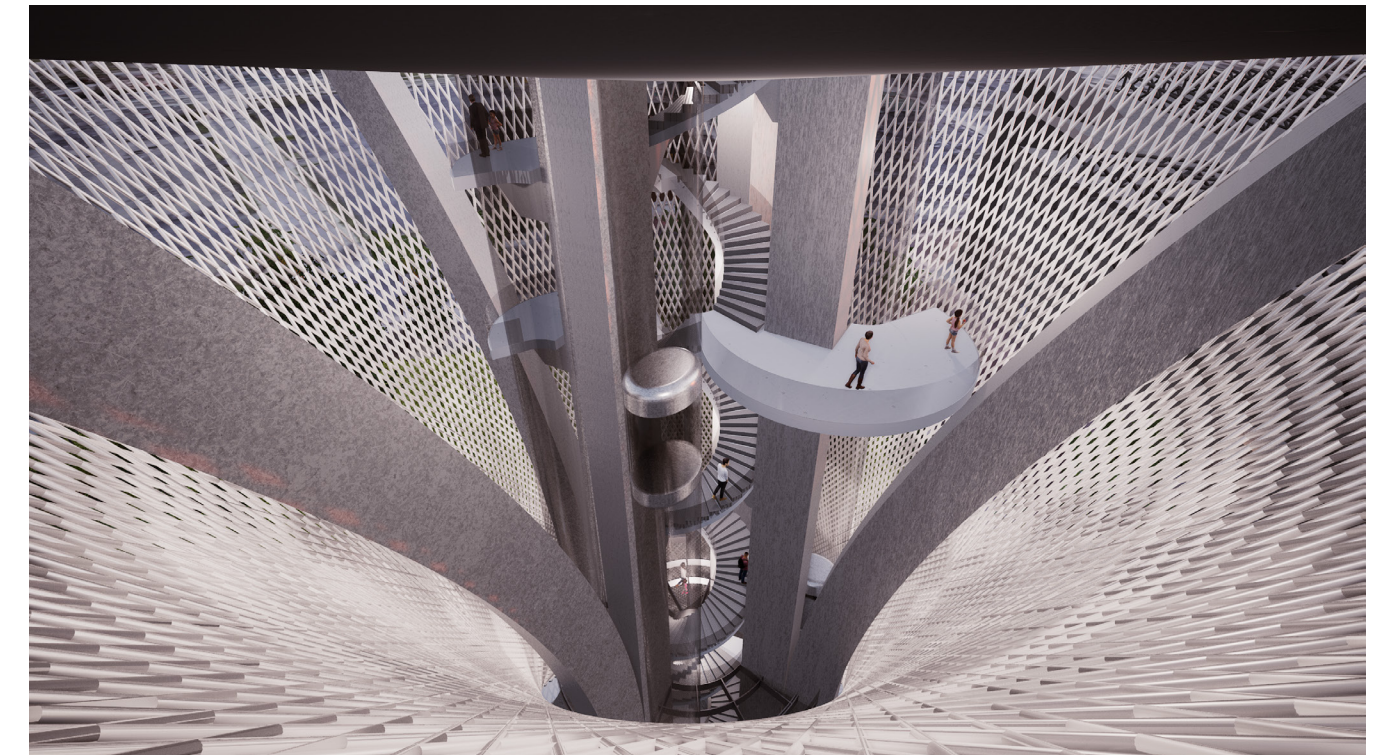
View from Park Cafe



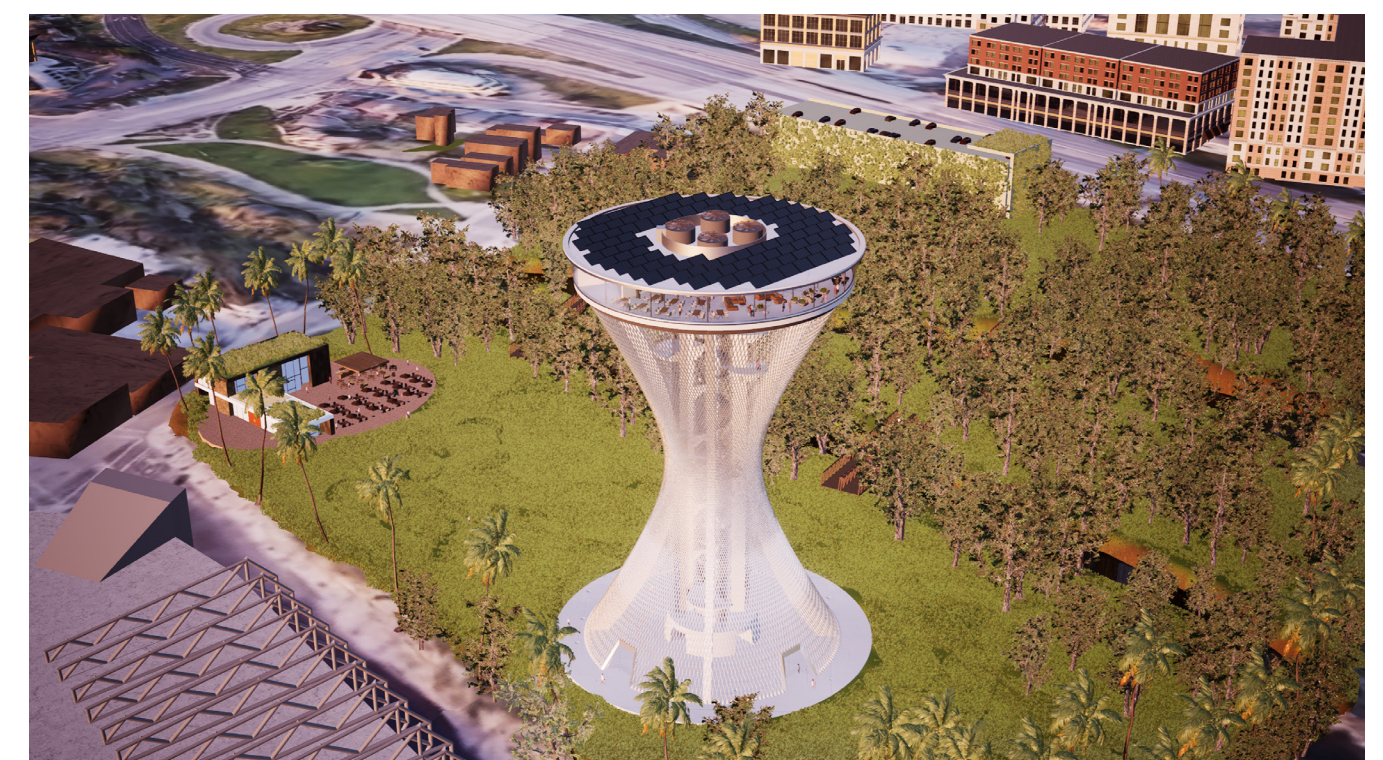
The mesh is a hyperboloid display with 4 million light pixels



Inside the hourglass (from below)



Inside the hourglass (from above)



Site Overview: Park Cafe on the left
Welcome building on top center right

PULSE CYCLE



The tower is controlled by the heartbeat of participants, creating glimmering light patterns

COLOR CYCLE

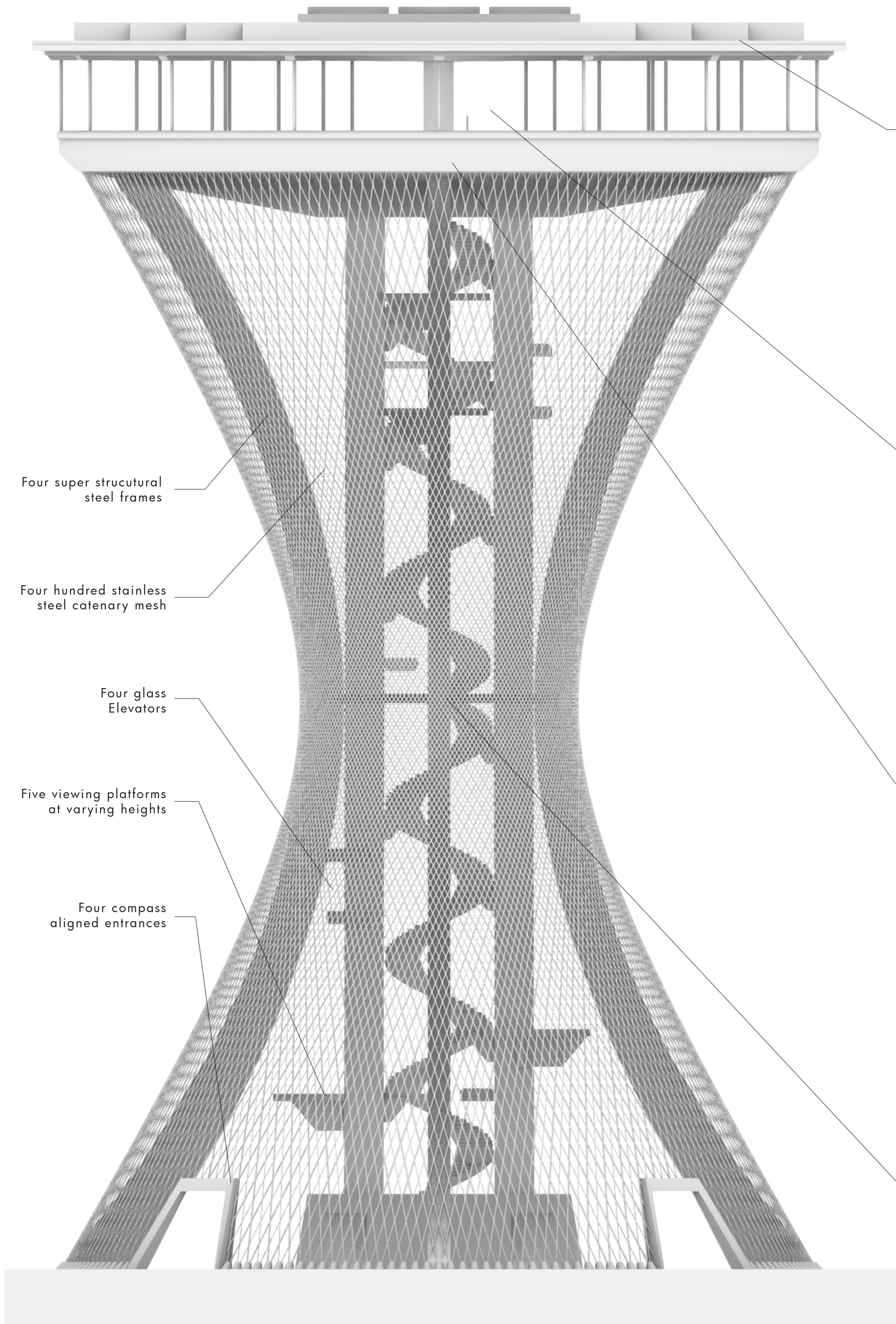


The tower can cycle from black and white to 65,536 colors

ART CYCLE

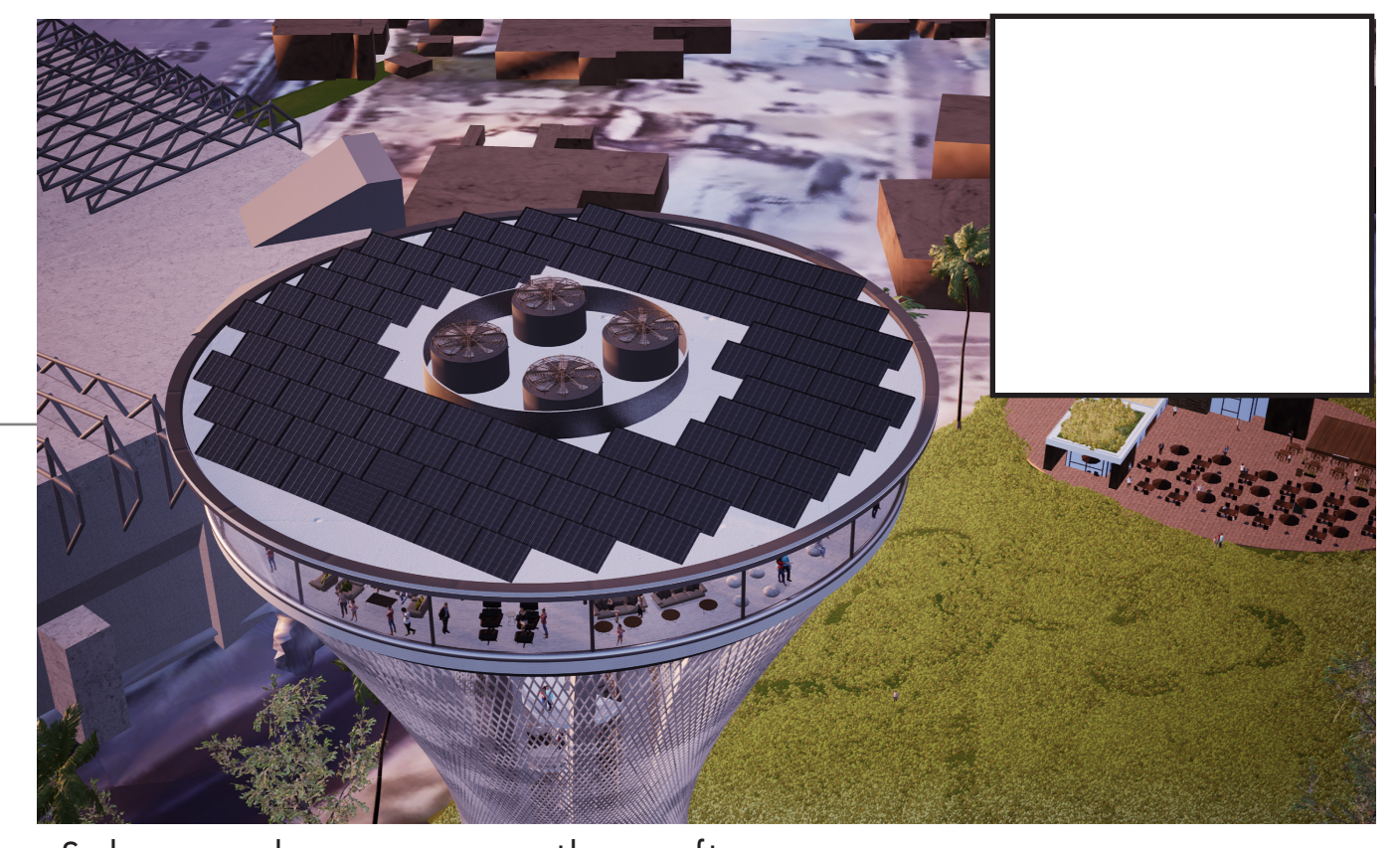


The tower can be animated by artists using video or computer graphics



- Four super structural steel frames
- Four hundred stainless steel catenary mesh
- Four glass Elevators
- Five viewing platforms at varying heights
- Four compass aligned entrances

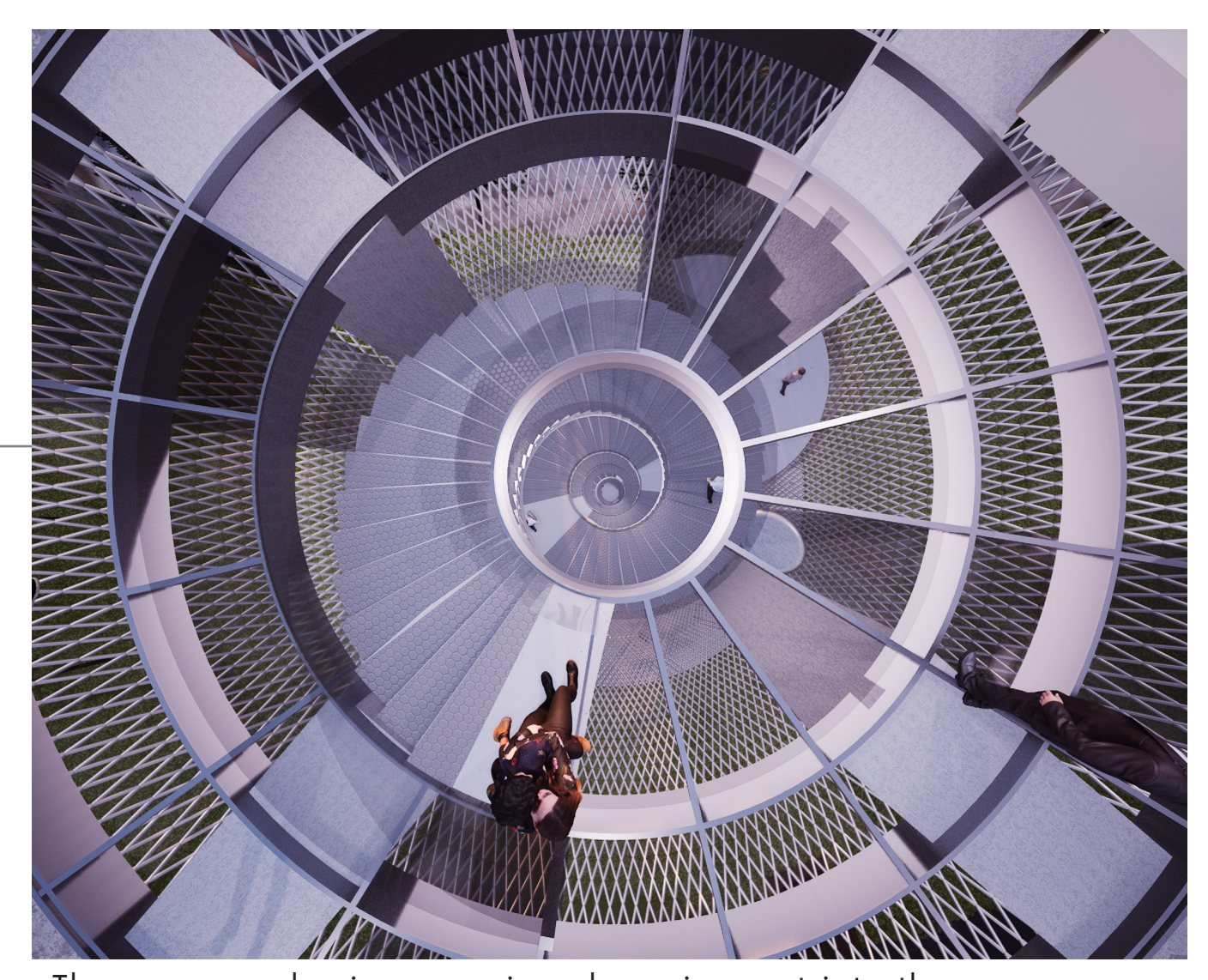
Tower dimensions: 200' high, 130' diameter footprint



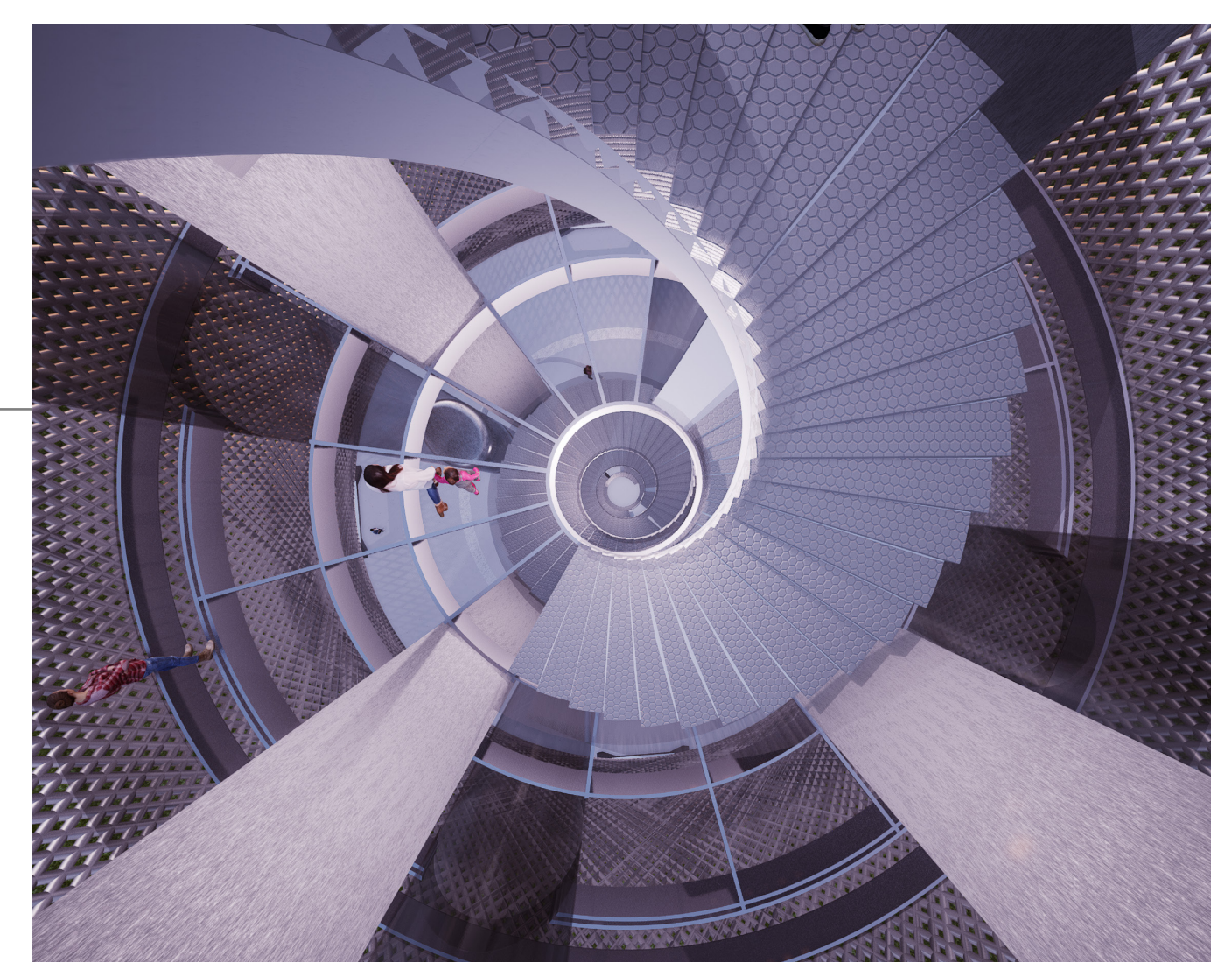
Solar panel array covers the rooftop



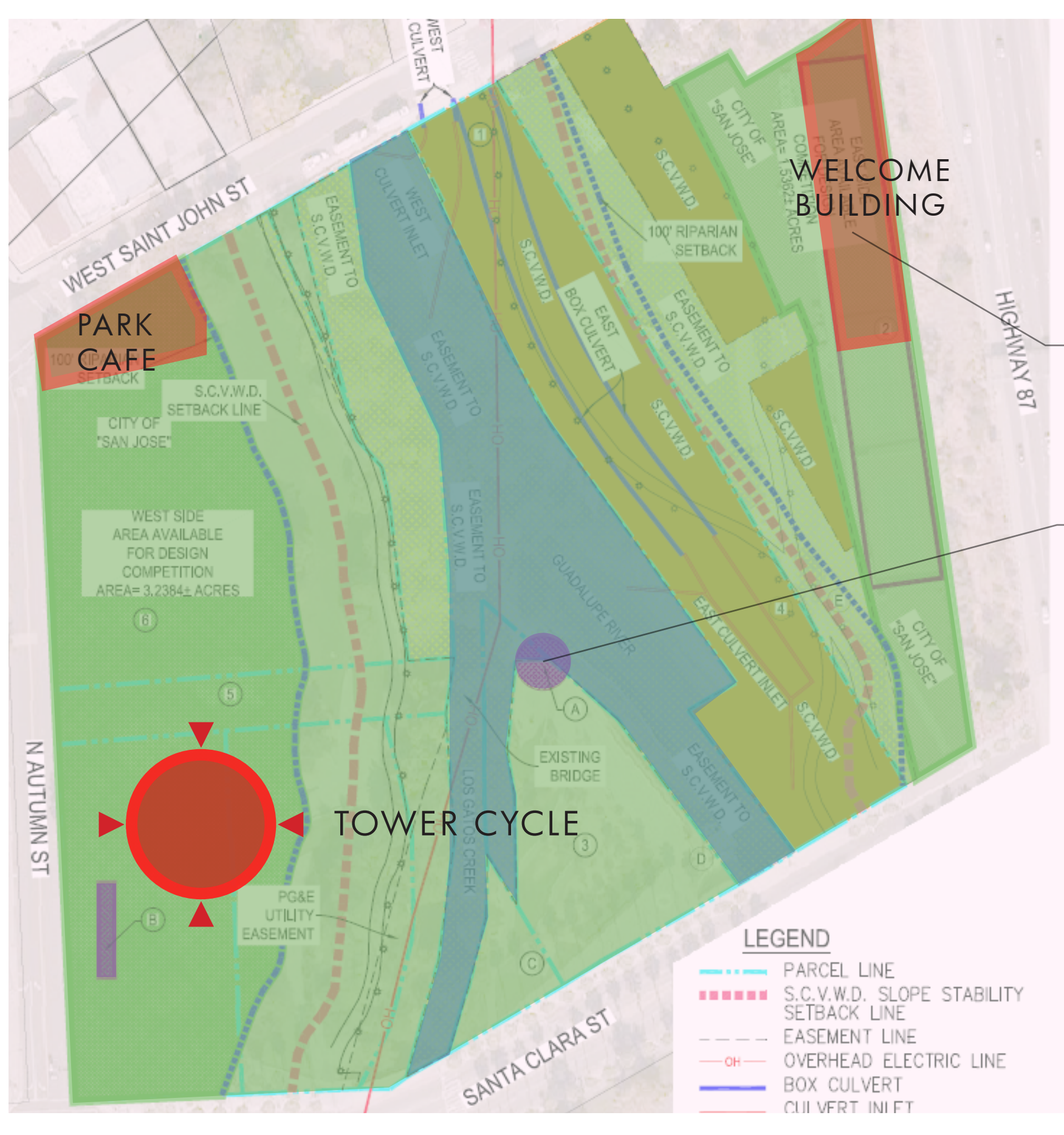
Observatory level provides spectacular views of the city



The upper oculus is a massive glass viewport into the spiral staircase and the interior of the hourglass

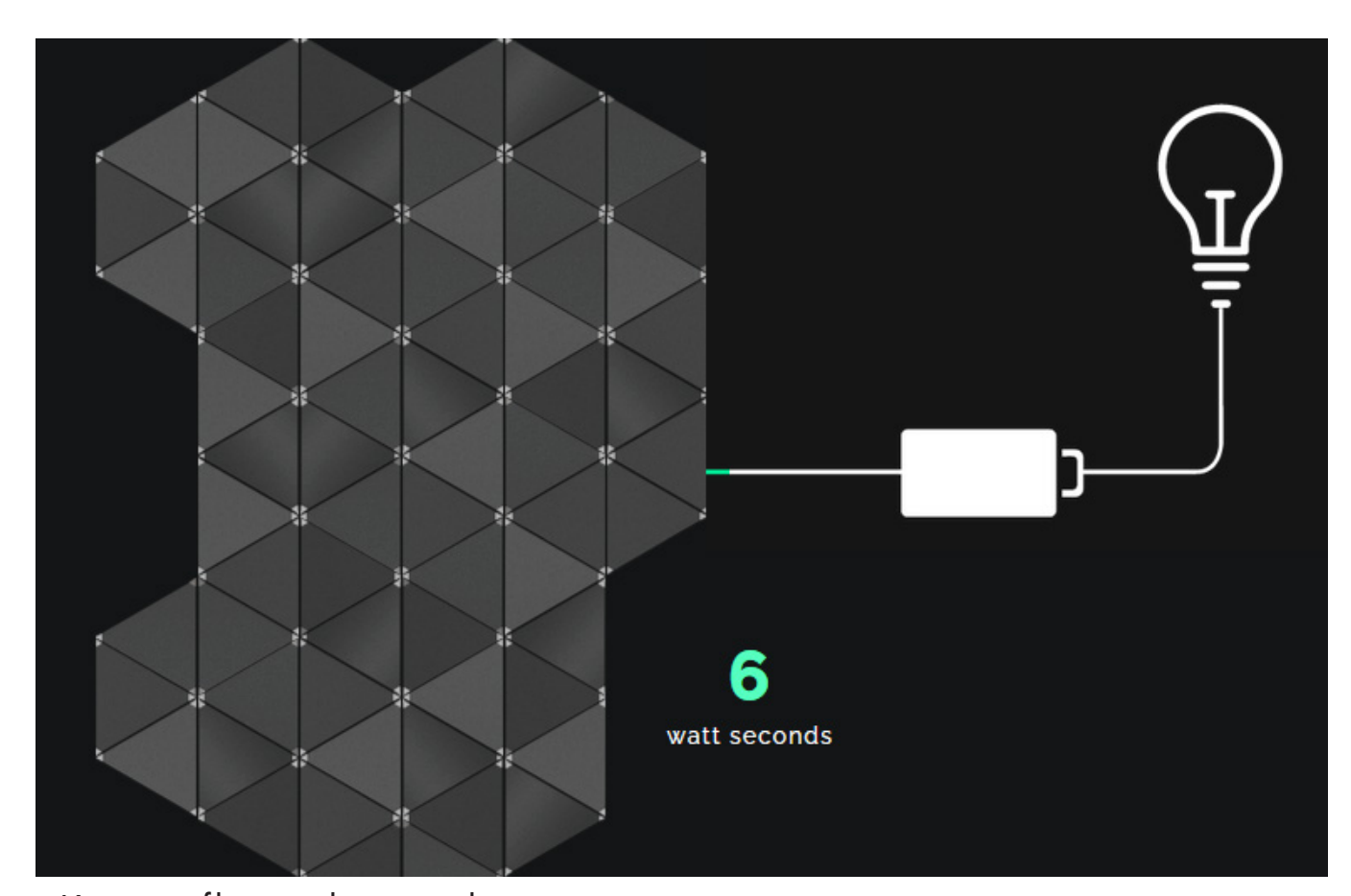


A lower oculus is a glass platform at the midpoint of the climb

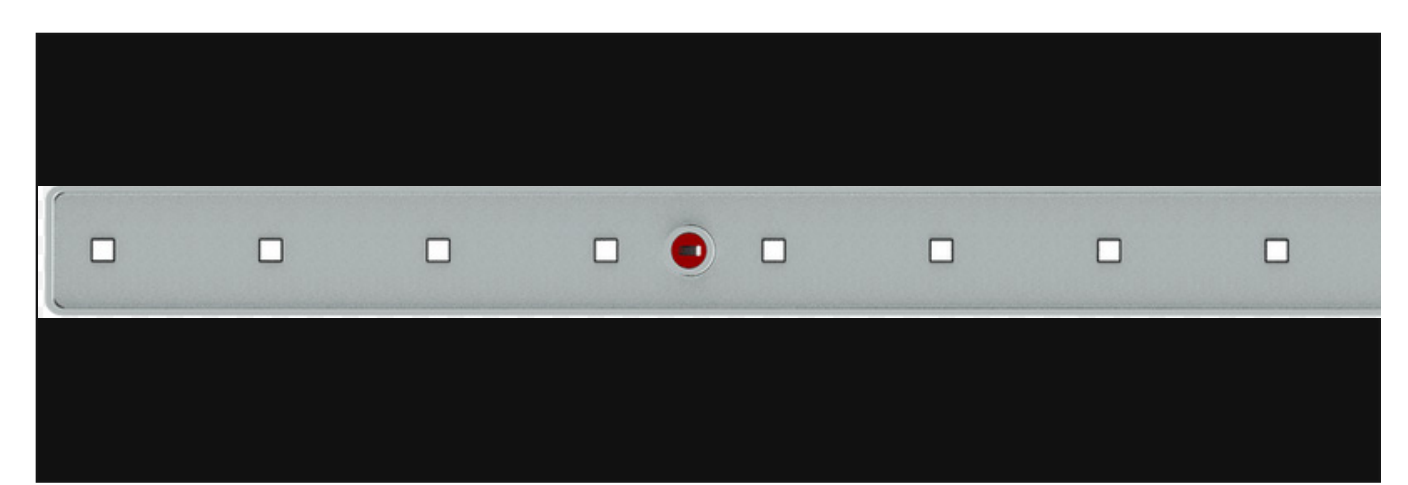


Parking, information, ticket sales, lost and found, first aid

New and existing bridges take people from Welcome building to tower across the river



Kinetic floor tiles on the staircase generate electricity with each footprint



Four million SACO LEDs cover the inside and outside of the mesh. This can be animated with graphics or video

