



URBAN CONFLUENCE SILICON VALLEY

SPIRAL WALKWAY

At the confluence of the Guadalupe river and Los Gatos creek in San Jose, California, the financial and cultural center of Silicon Valley, we created an elliptical spiral, an elevated walk in the park, winding through the trees and over the rivers. Rising at an easy incline of 2 degrees or 1 in 24, the path starts at ground level and slopes up to 40+ feet at the highest point across the street from the SAP Center, from where it slopes down again to ground level on the other side of the river to complete the approximately half mile spiral, creating opportunities to occupy the structure below, beyond the 100' Riparian setback.

CONCEPTUAL DEVELOPMENT

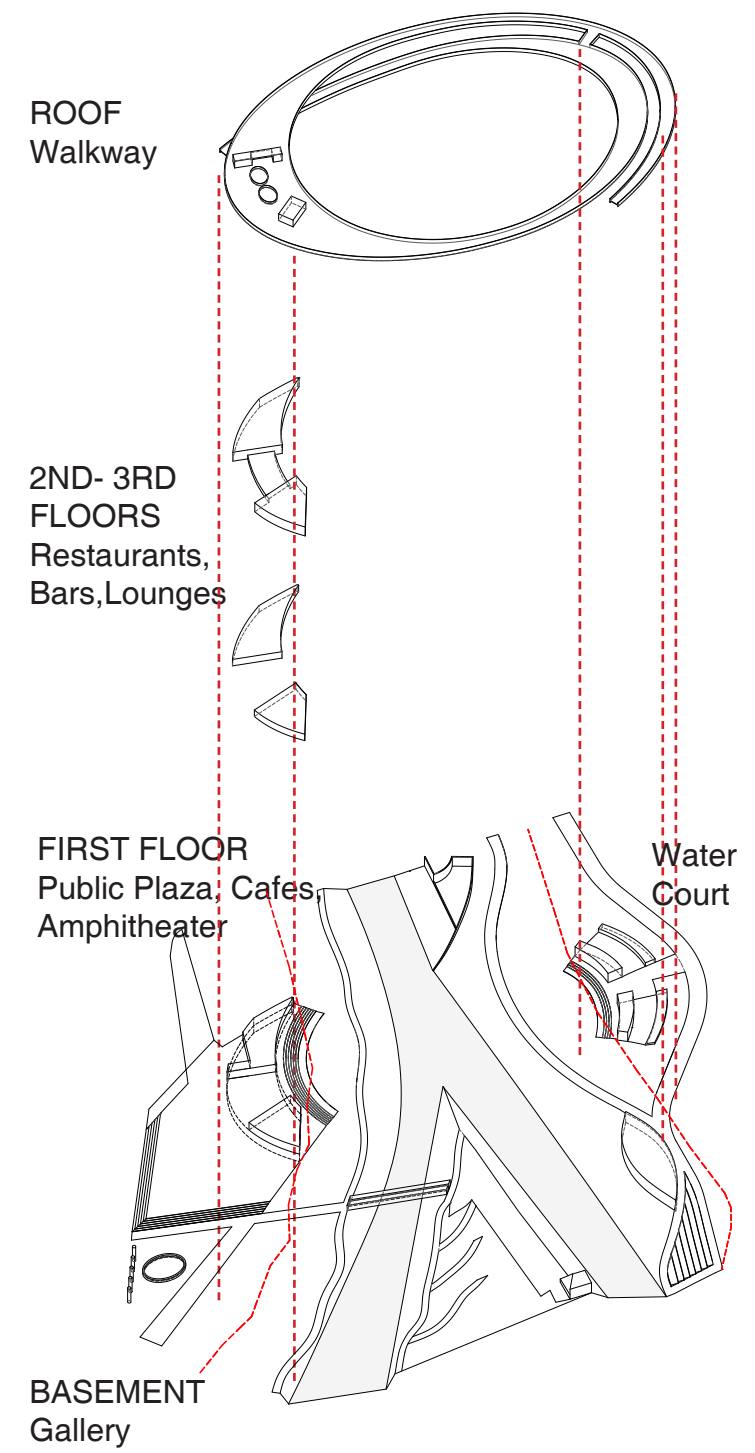
The spiral structure is inspired by geometries found in nature- from whirlpools, sunflowers, vine tendrils to hurricanes, galaxies and the structure of DNA. The spiral symbol, found in different cultures and religions, signifies the evolution of life. We were intrigued by the idea of the circumambulatory, and the act of walking the land as a transformative journey. The geometry of the structure is made up of elliptical sections with a common center point at the confluence of the two rivers. The elliptical form is used to create a public space to enhance and tie together the existing monuments and structures at the site.

URBAN DESIGN

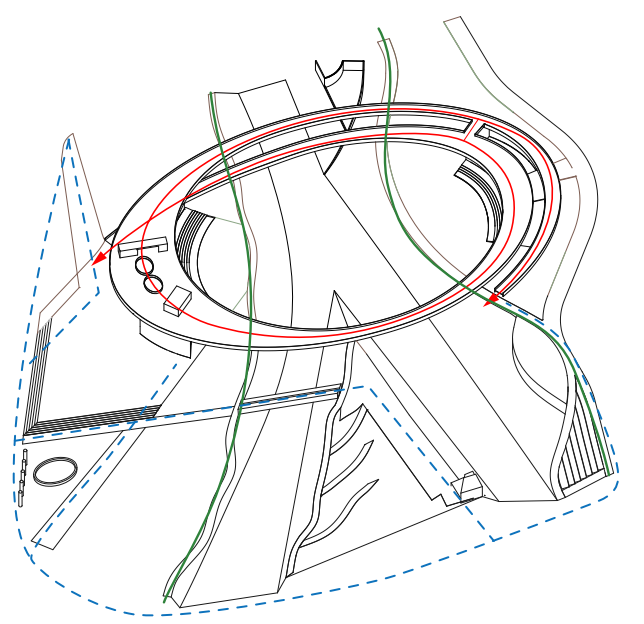
From an urbanistic standpoint we envisioned a low, horizontal structure at the confluence point, within the context of the linear form of the Guadalupe river and park. When the Google campus is completed, the higher buildings around SAP Center and Diridon Station will complement the buildings in downtown San Jose, across the horizontal expanse of the river and park. At the west end where the structure rises to a height of 40+ we have proposed a large public space with galleries, restaurants, cafes and lounges and an amphitheater for gatherings and performances. On the opposite side of the river, where the structure is lower and varies from 10' to 20', we have used the structure as a quiet, contemplative space around a shallow pool of water, leading to an amphitheater overlooking the trail and river.

LIGHTING AND ENERGY

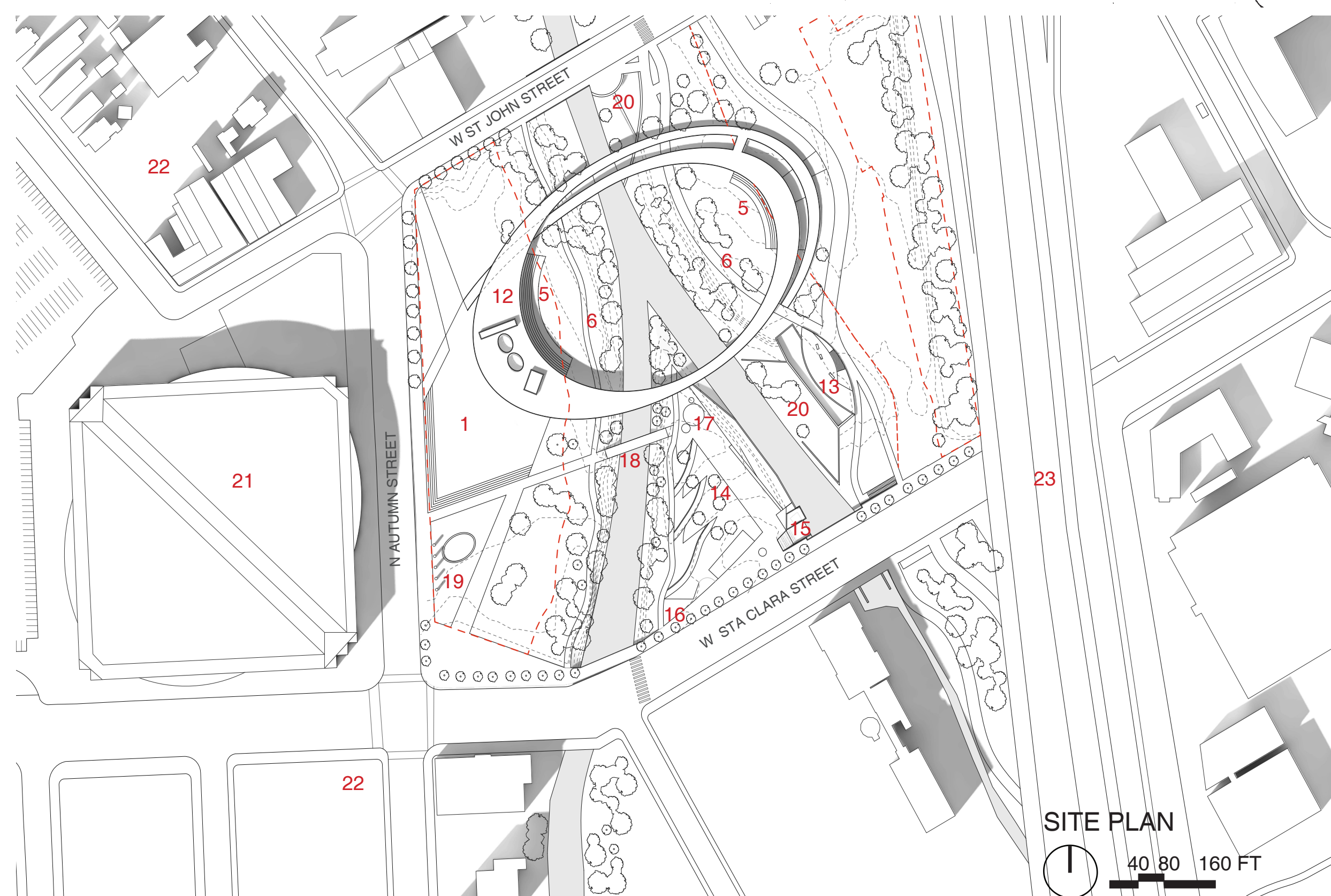
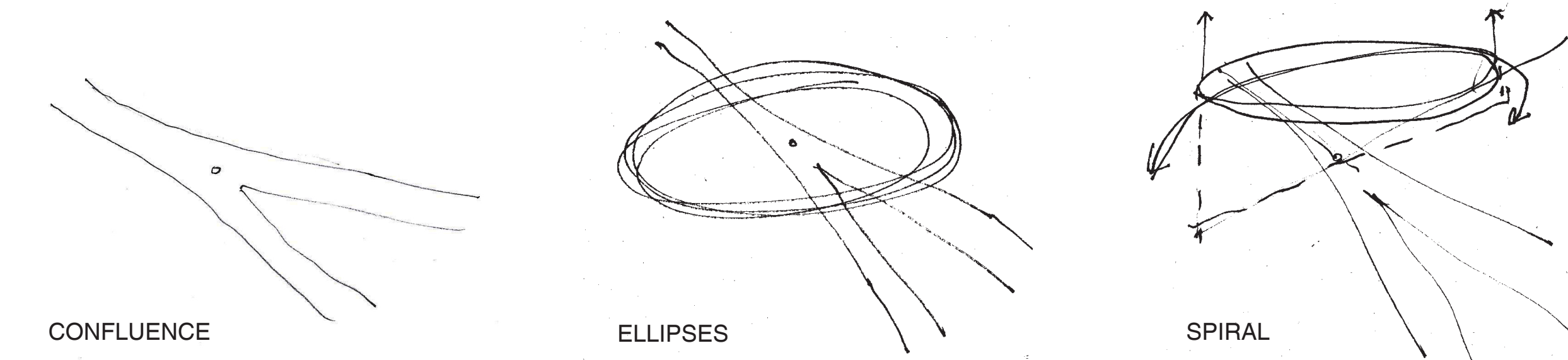
The proposed lighting is minimal, along the railings on the walk and below the walkway, outlining the elliptical form. Facades of the two structures below the walkway on the east and west side of the river are perforated so that light spill from the interior of the structure will be subtle and indirect. Sustainability is inherent to our concept as it touches the earth lightly and would be a core strategy for development. Façade strategies are used to maximize natural ventilation and daylighting, and a comprehensive net zero strategy would encompass material selection and alternative sources of energy such as solar powered lighting on the walkway.



SPATIAL ORGANIZATION



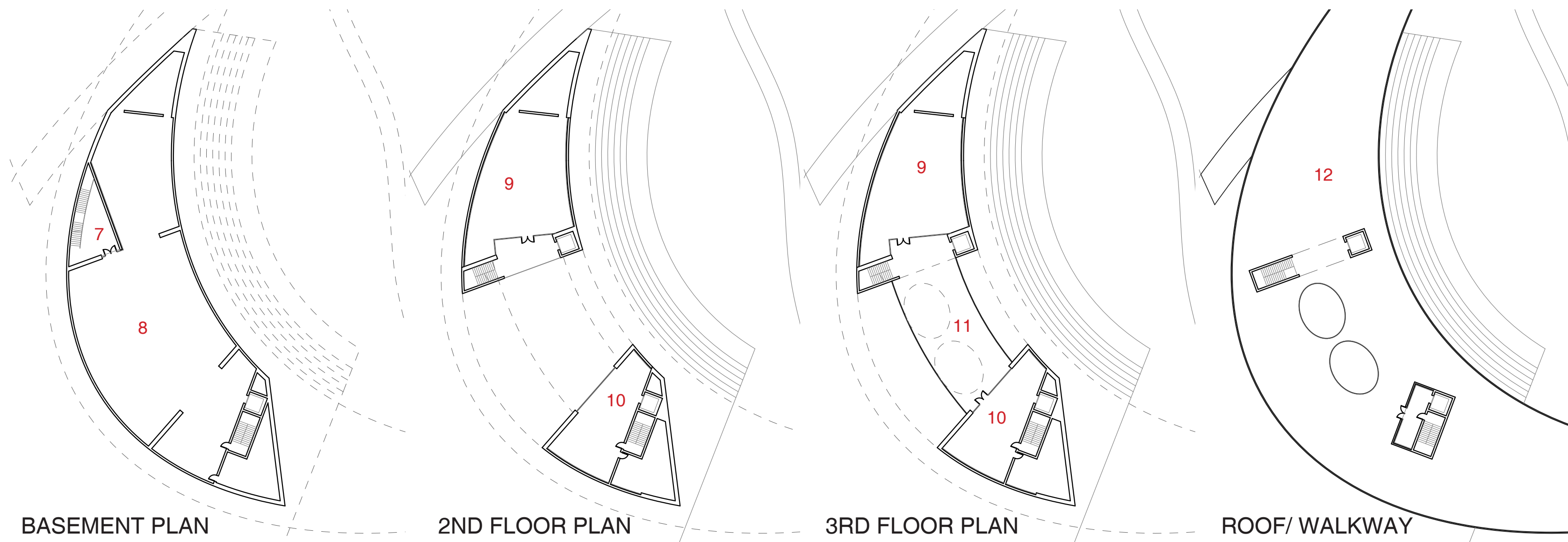
SITE CONNECTIONS



1. PUBLIC PLAZA
2. RAMP
3. CAFE
4. SHOP
5. AMPHITHEATER/ PERFORMANCE
6. TRAIL
7. COURT
8. GALLERIES
9. RESTAURANTS
10. BAR
11. LOUNGES
12. WALKWAY
13. TRIBUTARIES MONUMENT
14. CONFLUENCE POINT
15. RANGERS STATION
16. VIETNAM MEMORIAL
17. WEAVER'S GIFT
18. EXISTING BRIDGE
19. FIVE SKATERS
20. OVERLOOK PLAZA
21. SAP CENTER
22. FUTURE GOOGLE CAMPUS
23. STATE ROUTE 87



VIEW OF PUBLIC PLAZA

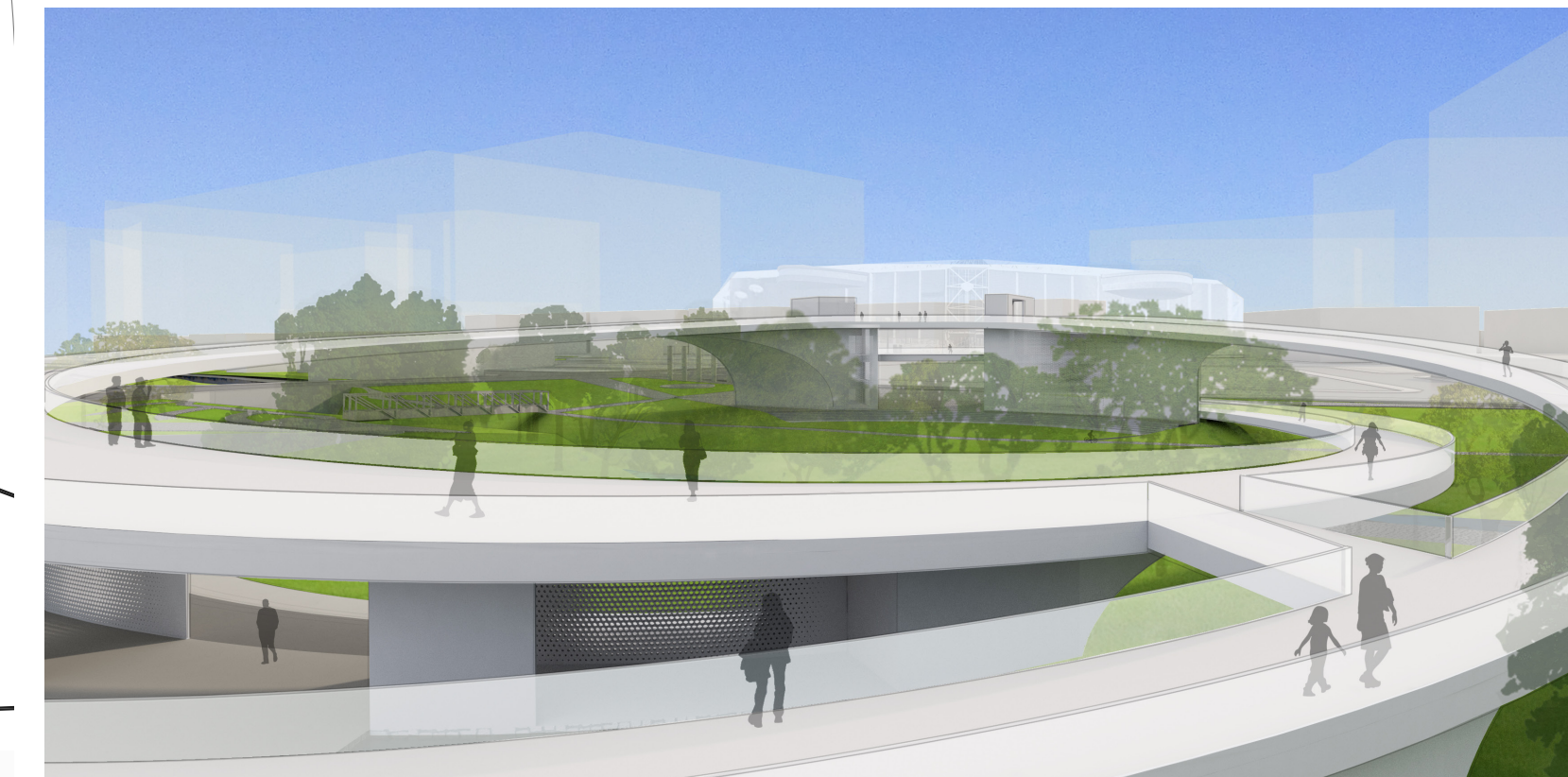


BASEMENT PLAN

2ND FLOOR PLAN

3RD FLOOR PLAN

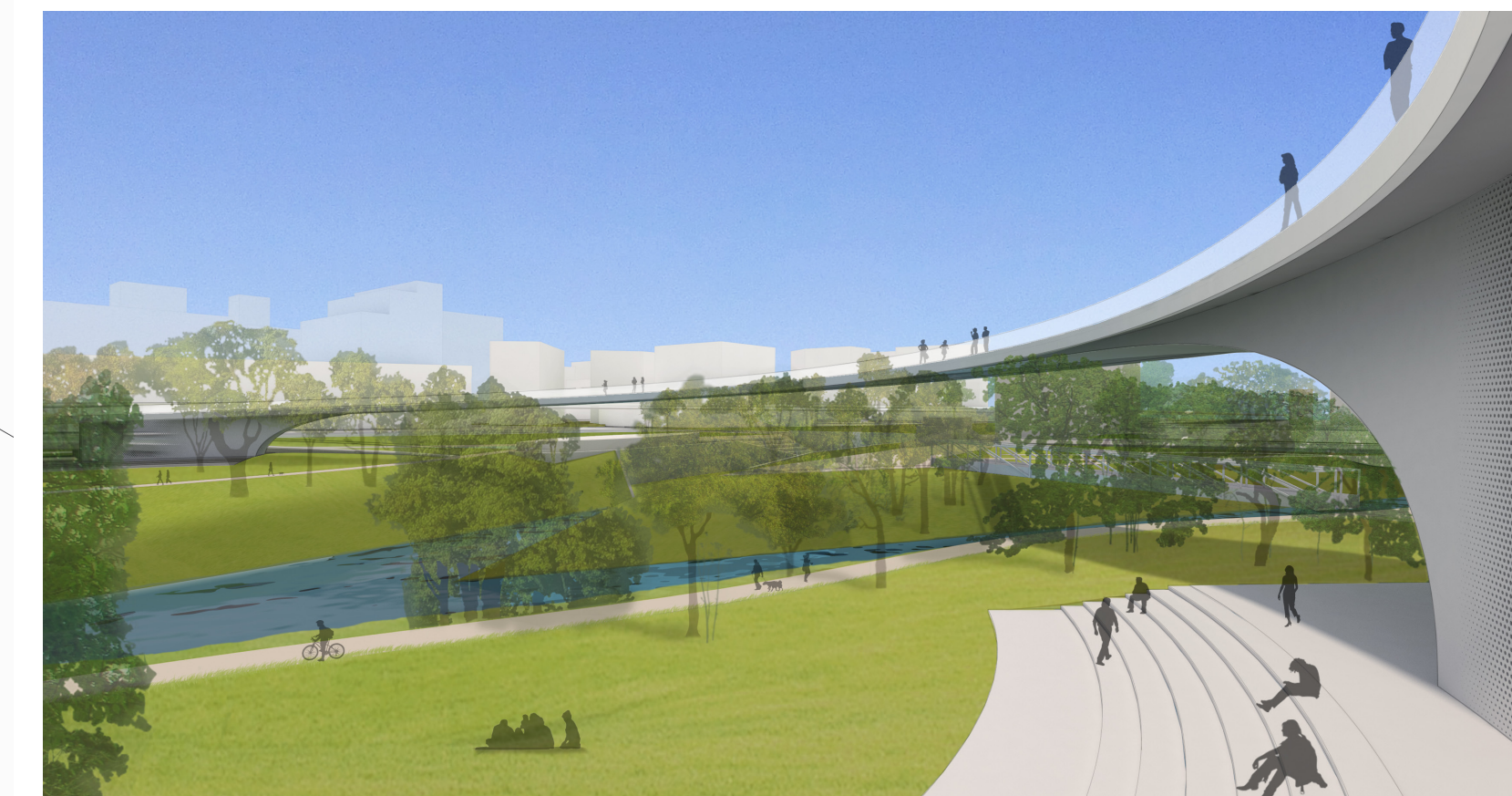
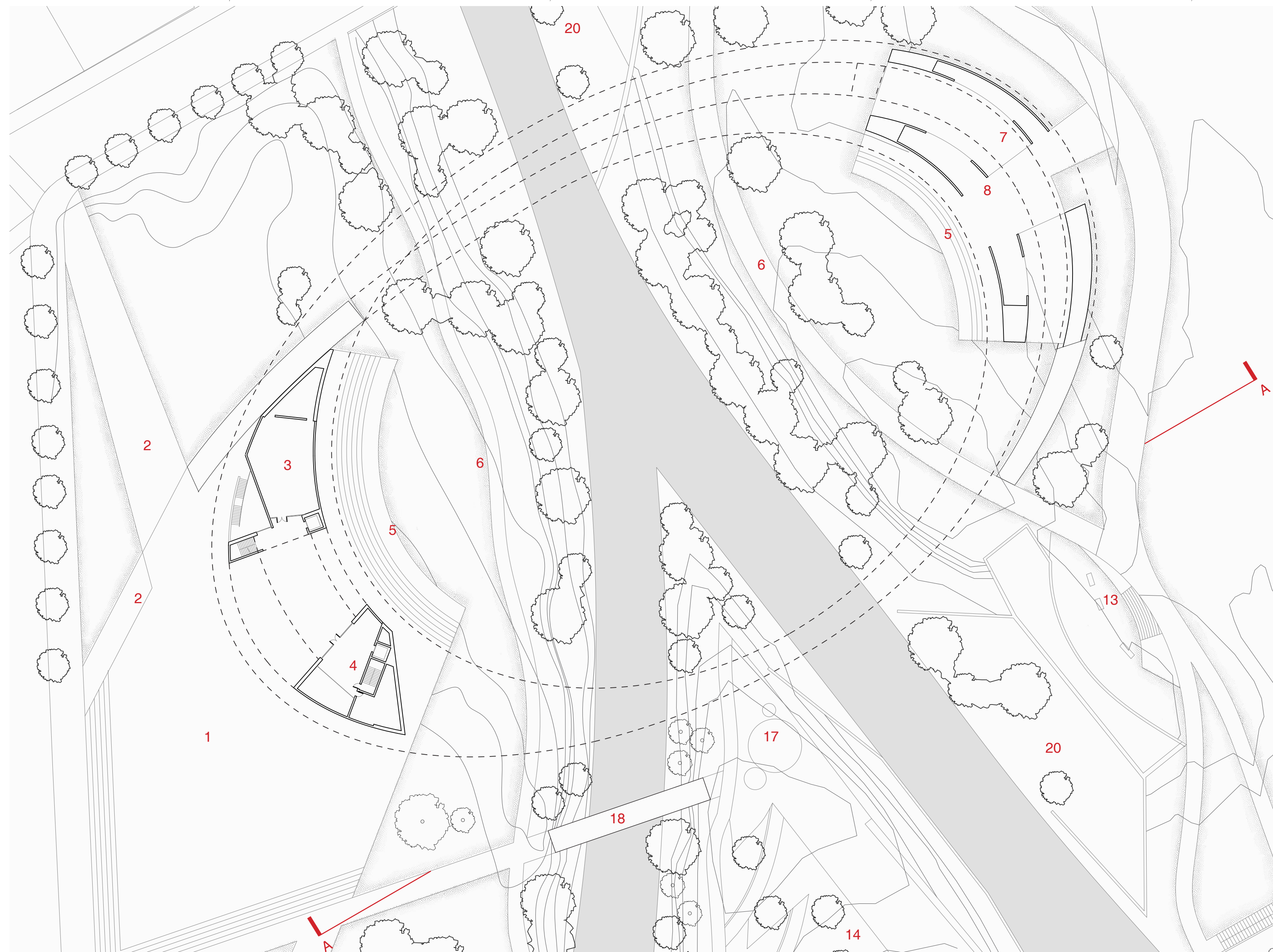
ROOF/ WALKWAY



VIEW OF WALKWAY/ WATER COURT AND GALLERY BELOW



LOOKING WEST FROM WALKWAY



VIEW OF PARK/RIVER FROM WEST AMPHITHEATER



VIEW OF 3RD FLOOR LOUNGE AND DOWNTOWN BEYOND

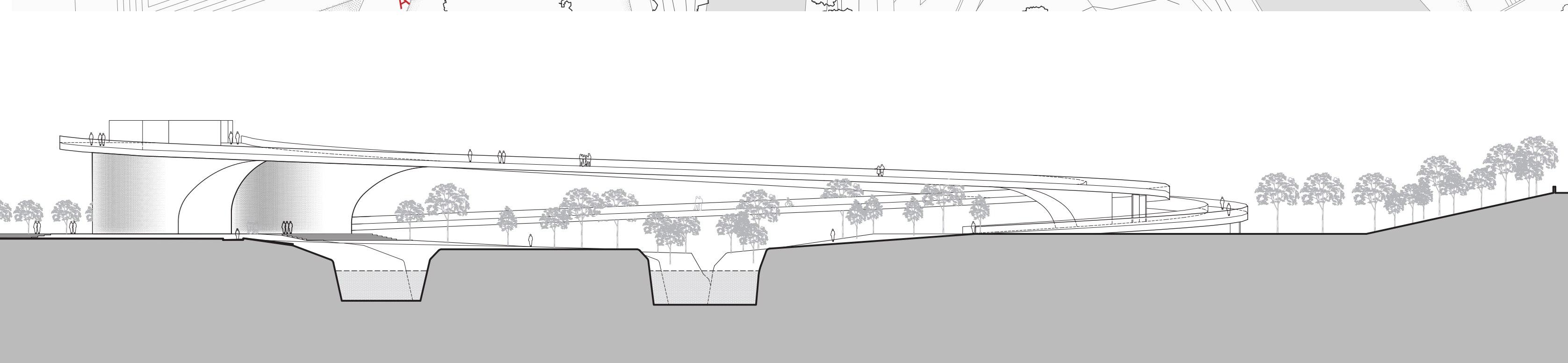
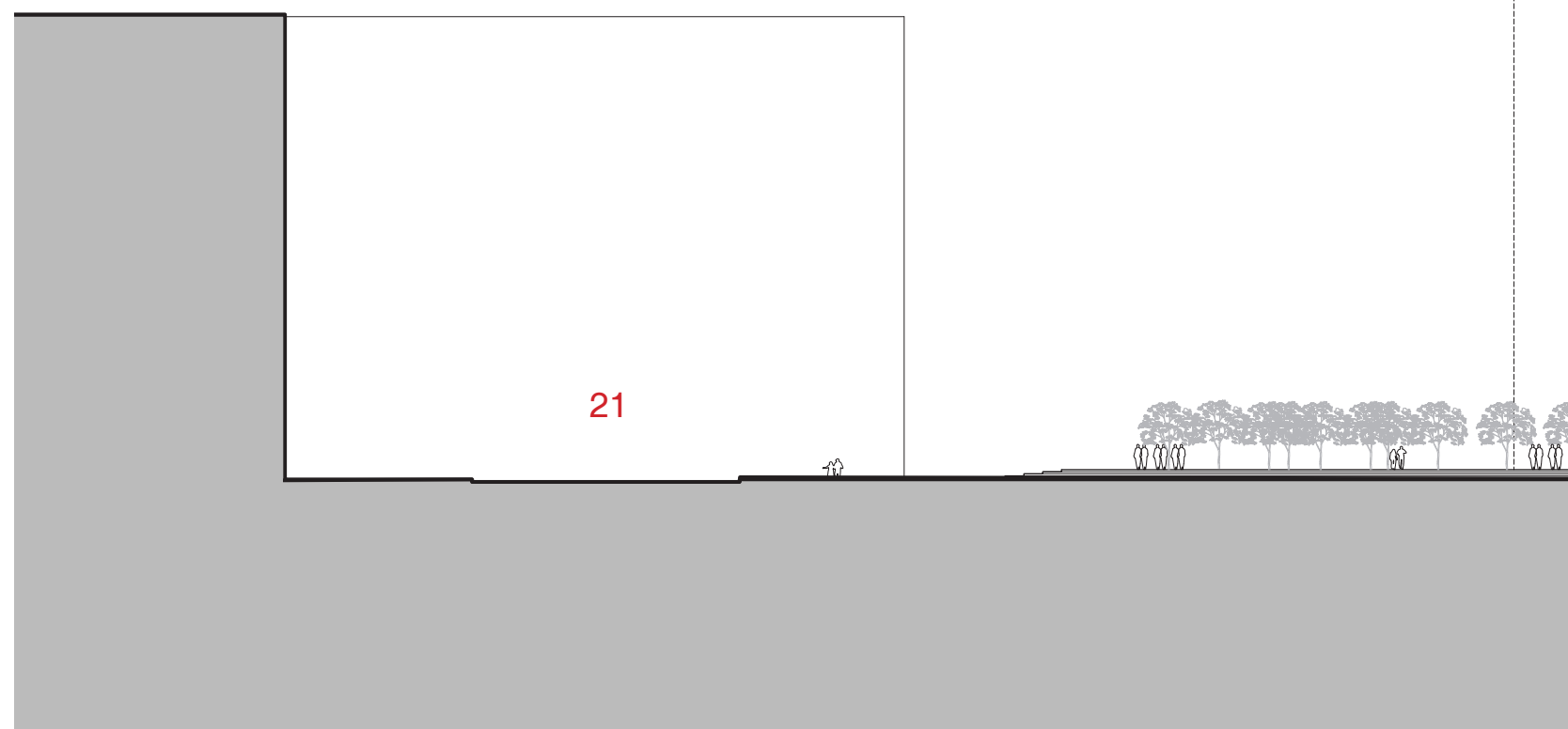


VIEW OF WATER COURT / GALLERY/ EAST AMPHITHEATER



FIRST FLOOR PLAN

- 1. PUBLIC PLAZA
- 2. RAMP
- 3. CAFE
- 4. SHOP
- 5. AMPHITHEATER/ PERFORMANCE
- 6. TRAIL
- 7. COURT
- 8. GALLERIES
- 9. RESTAURANTS
- 10. BAR
- 11. LOUNGES
- 12. WALKWAY
- 13. TRIBUTARIES MONUMENT
- 14. CONFLUENCE POINT
- 15. RANGERS STATION
- 16. VIETNAM MEMORIAL
- 17. WEAVER'S GIFT
- 18. EXISTING BRIDGE
- 19. FIVE SKATERS
- 20. OVERLOOK PLAZA
- 21. SAP CENTER
- 22. FUTURE GOOGLE CAMPUS
- 23. STATE ROUTE 87



SECTION A-A