

# WE ARE

// woke

// unique

// diverse

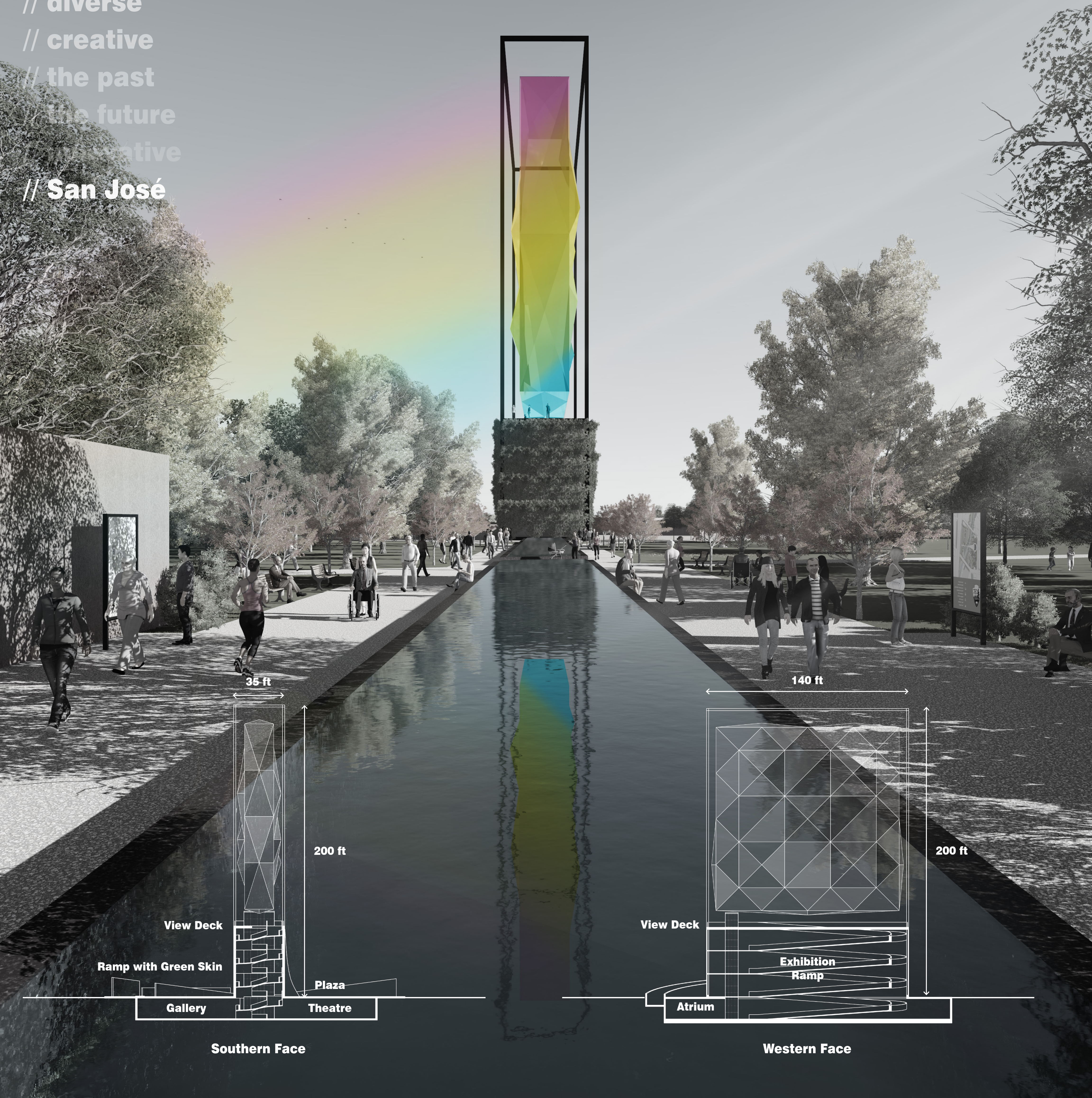
// creative

// the past

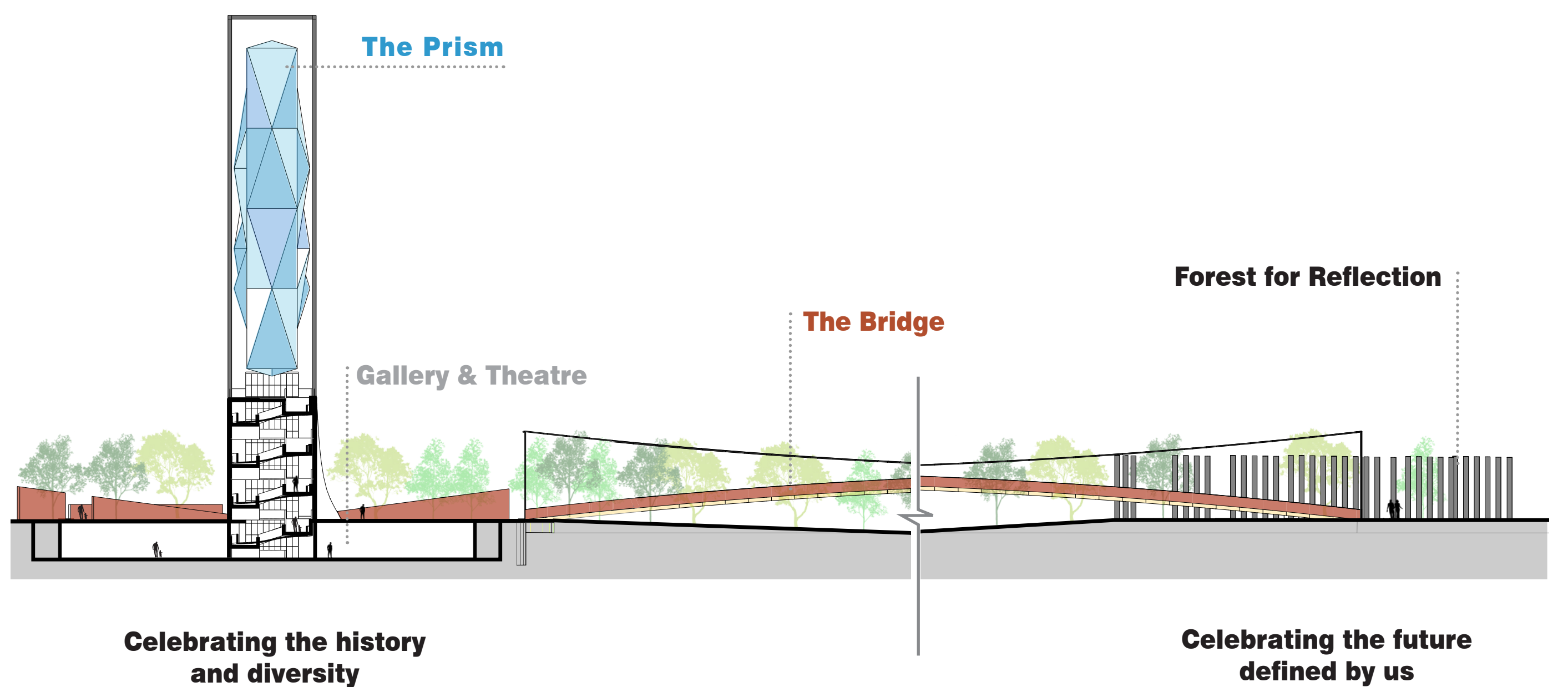
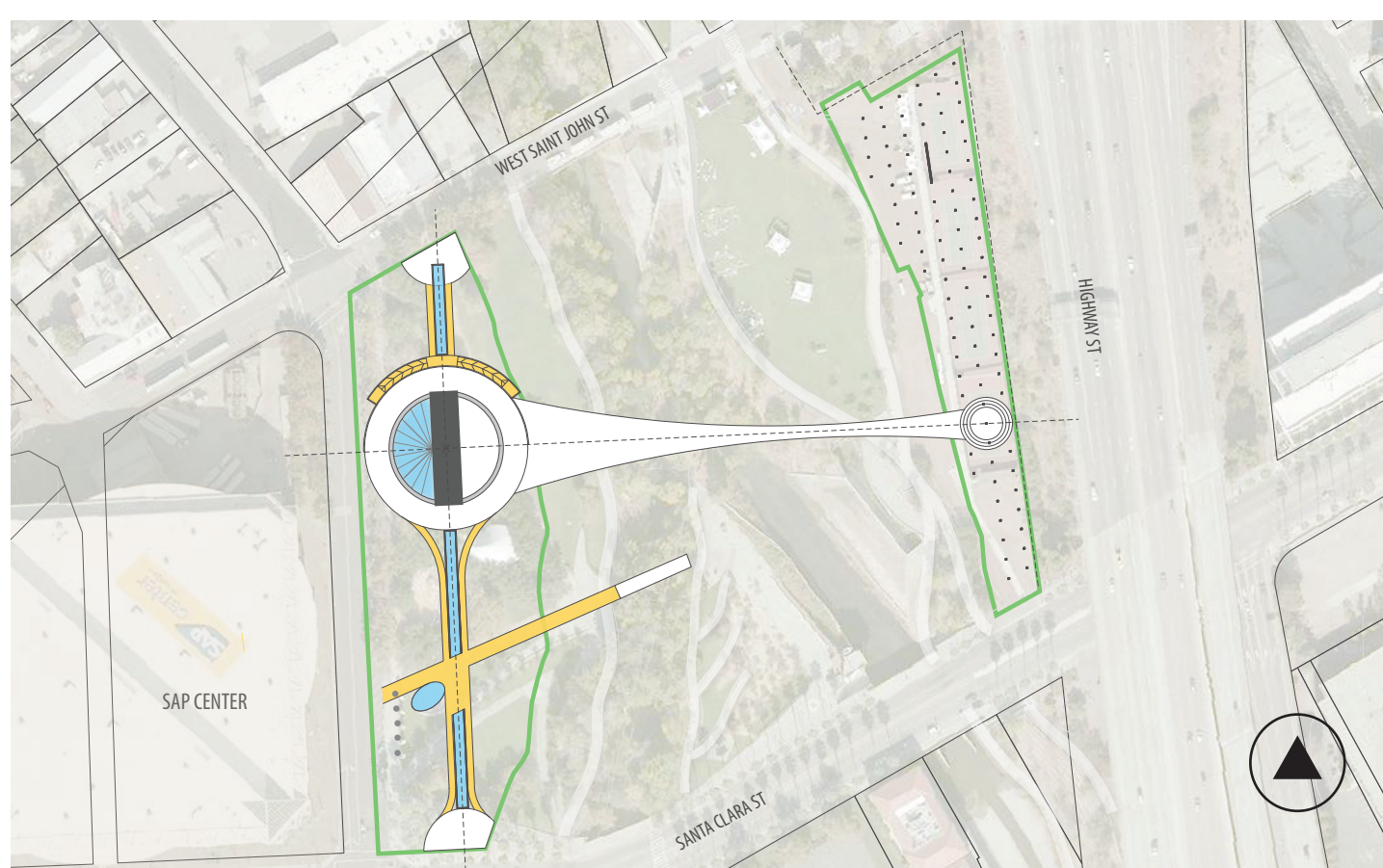
// the future

// innovative

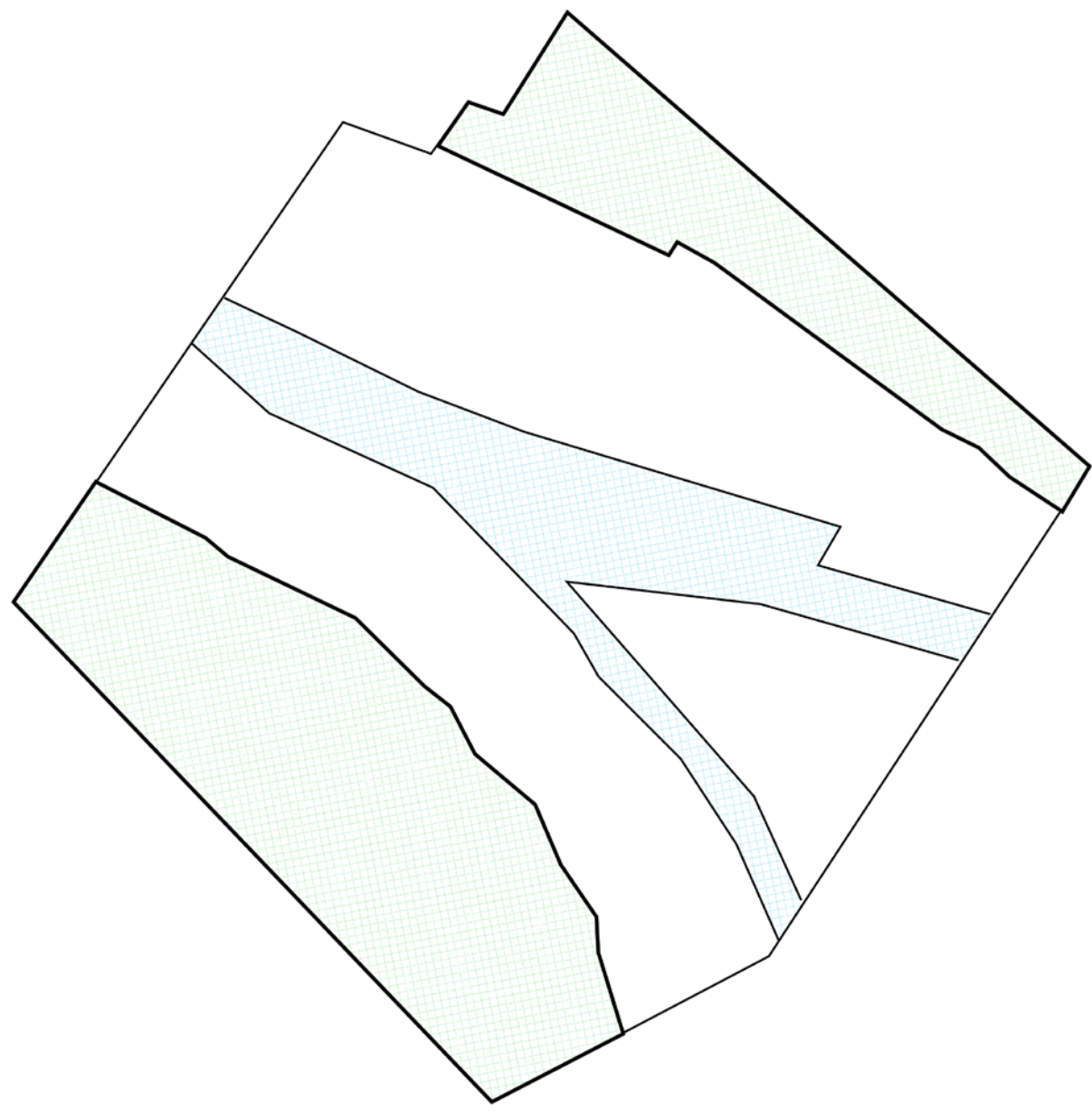
// San José



**We Are** is both an icon for the city and an experience, a landmark destination for residents and tourists alike. The light tower, comprises of the prism and its base, which doubles as a gallery. The 200 ft prism refracts light creating a spectrum of colours within and reflects the same in the axial pools on either side. The light and colour are symbols of the inclusivity of the city, and celebrates its diversity, the vibrant multi-faceted community who have put San Jose on the global map, constantly raising the bar of excellence in technology, innovations, arts and humanities.

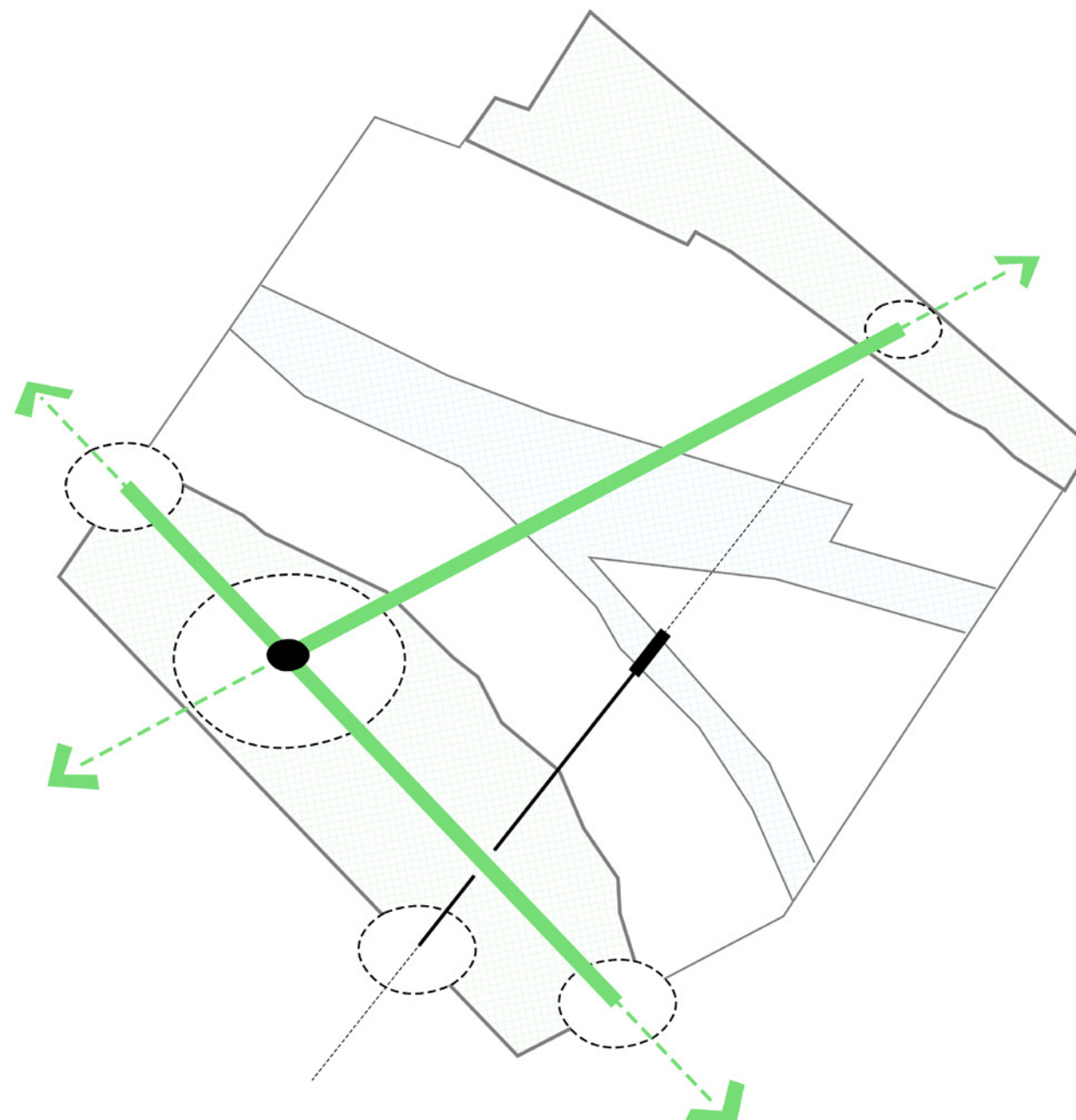


# The Evolution



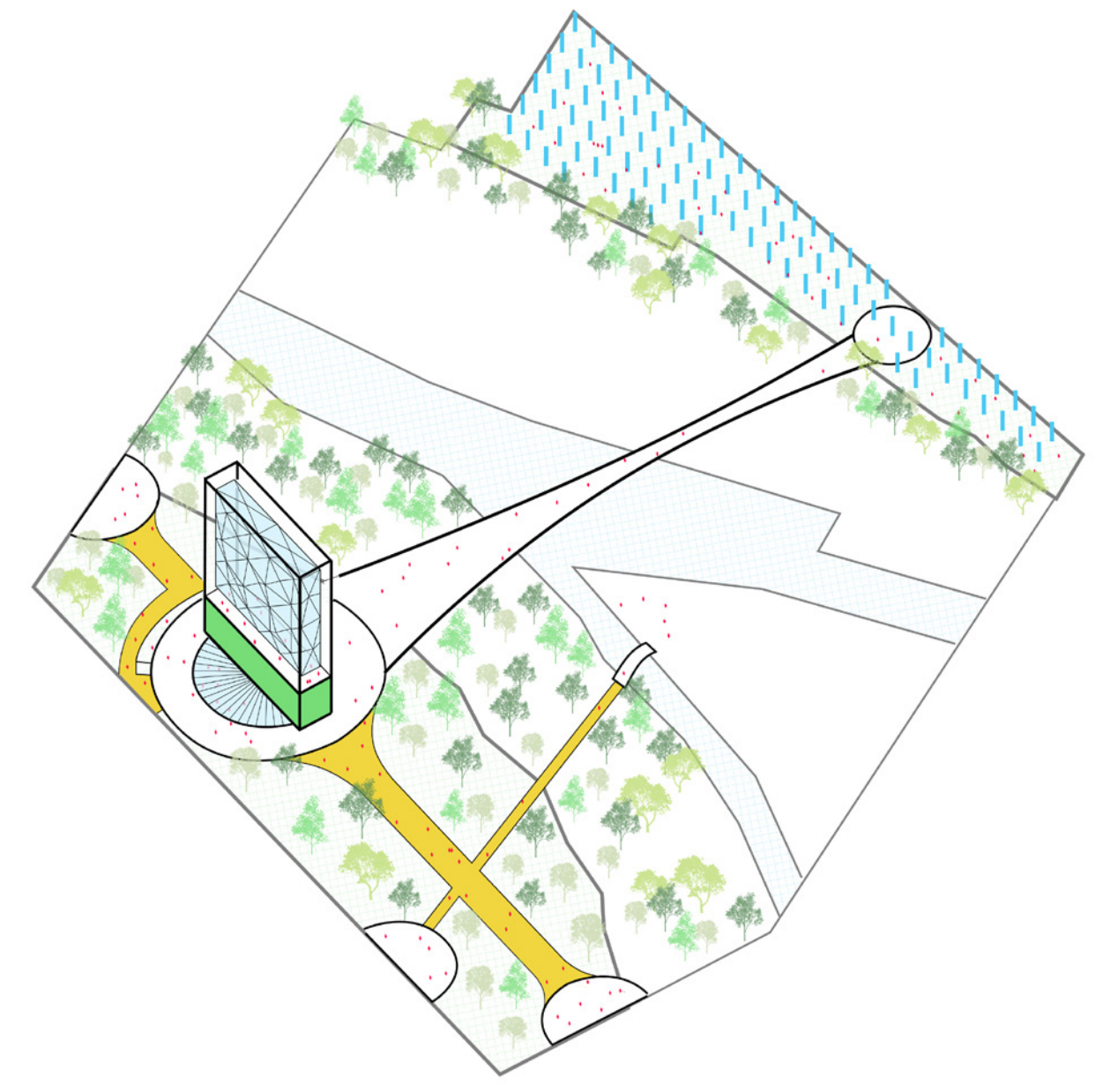
## The Site

At the confluence and on either side of the river, two parcels of land to create one icon for the city



## The Approach

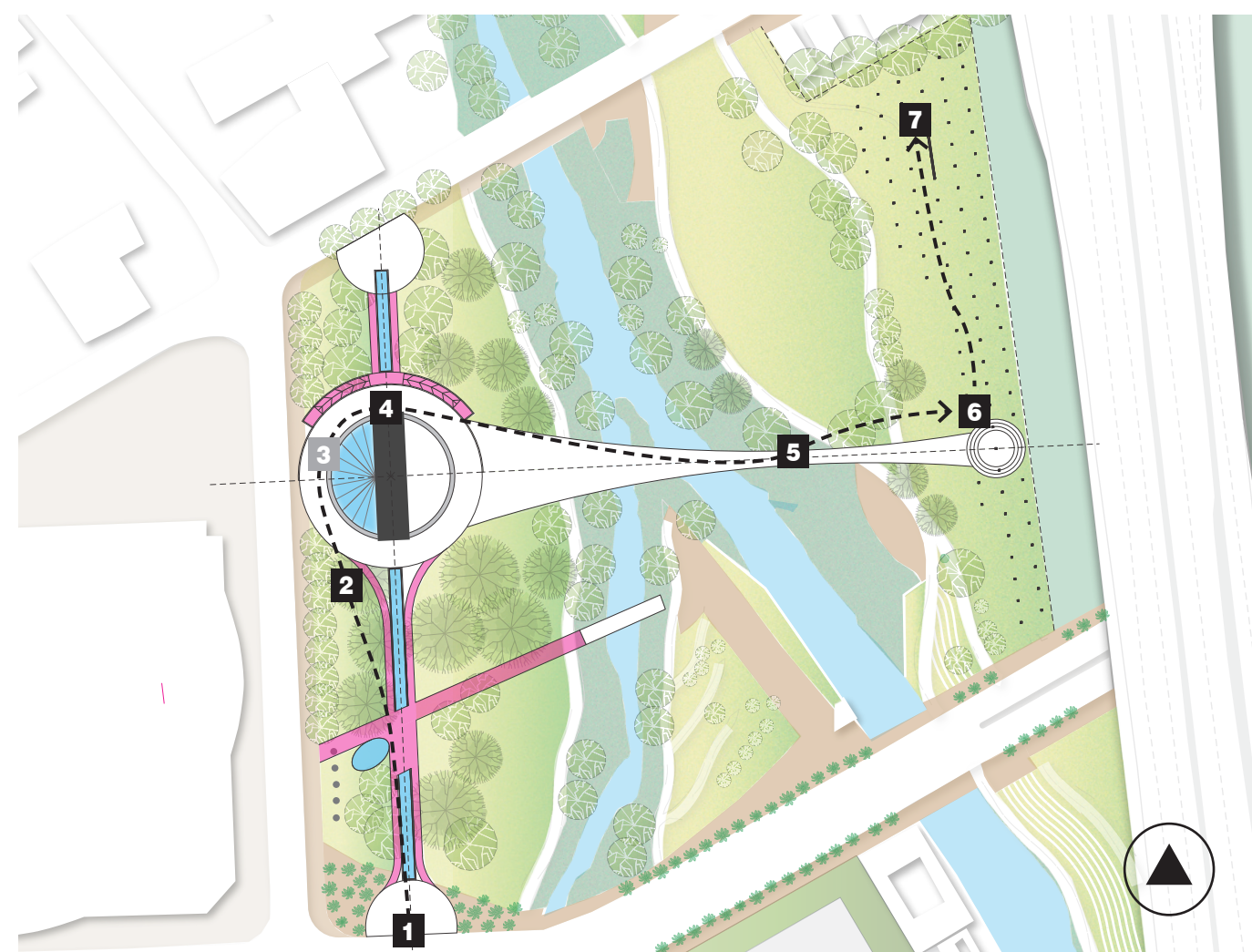
A drama of space with a dual axes, to reinforce the southern entrance and weave both parts of the site together.



## The Icon

A two pronged design approach for one icon on one site, the light tower on the west connecting to the forest for reflection on the east

# The Narrative



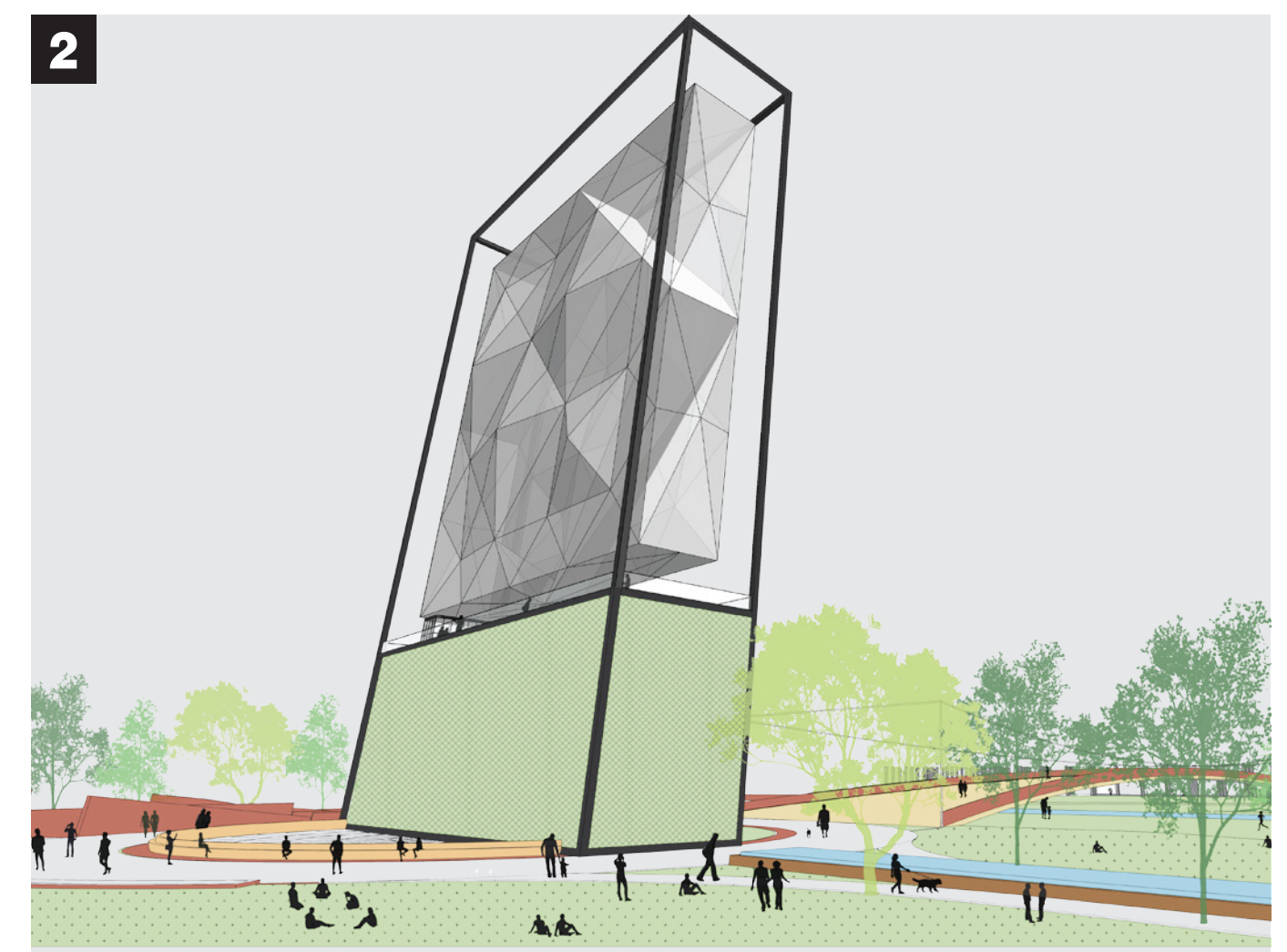
## Site Map

1. Palm Court / 2. Prism Court / 3. Lower Ground Gallery and Theatre / 4. Viewing Deck / 5. Bridge / 6. Reflection Court / 7. Forest for Reflection



## Palm Court

The entrance court takes its name from the existing palm trees and provides a strong visual axis to the iconic light tower, reinforced by the linear pool. It is flagged by an information centre and amenities.



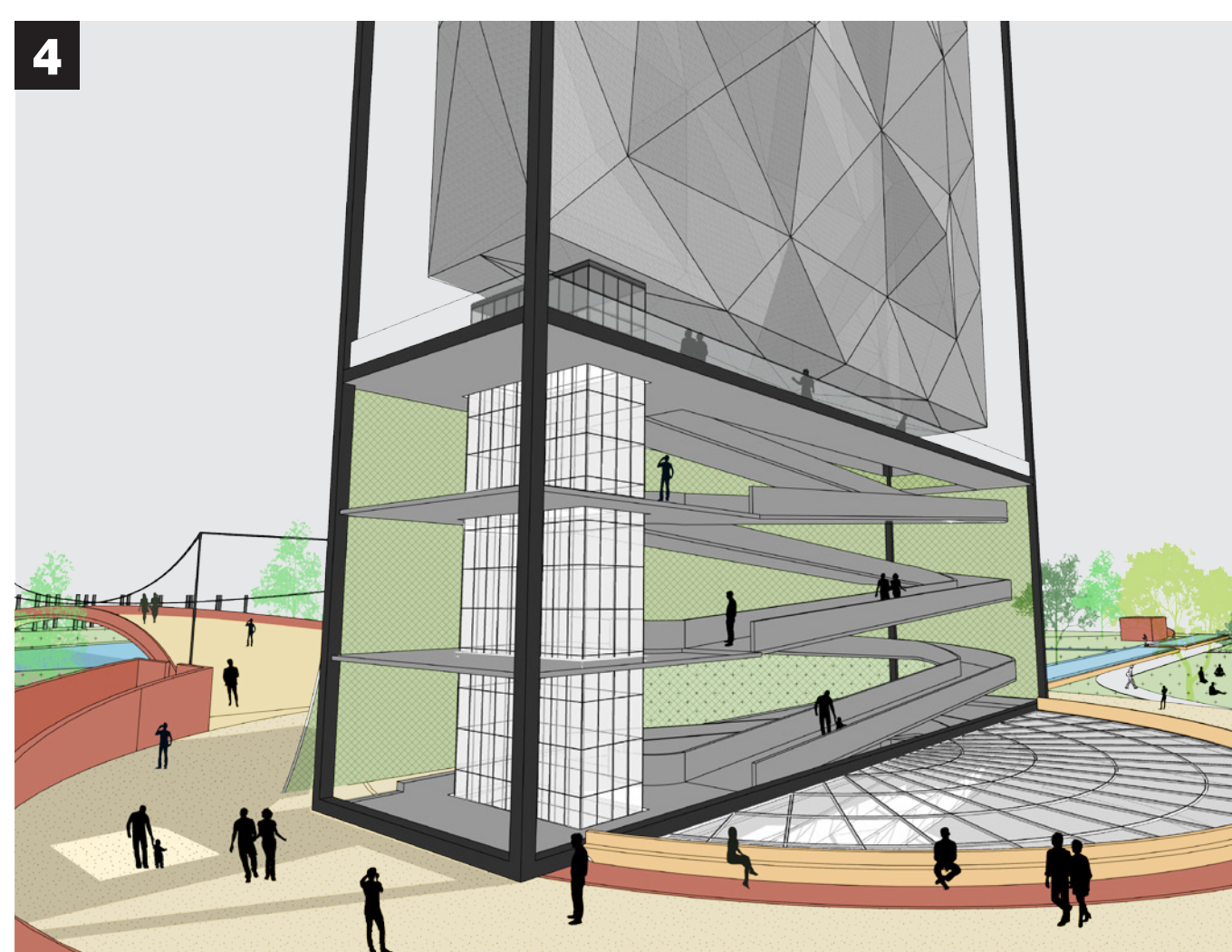
## Prism Court

The light tower whilst an icon from afar is designed to create a delightful experience within the park with its ever changing quality of light in the prism, its reflection in the water and all around shimmer.



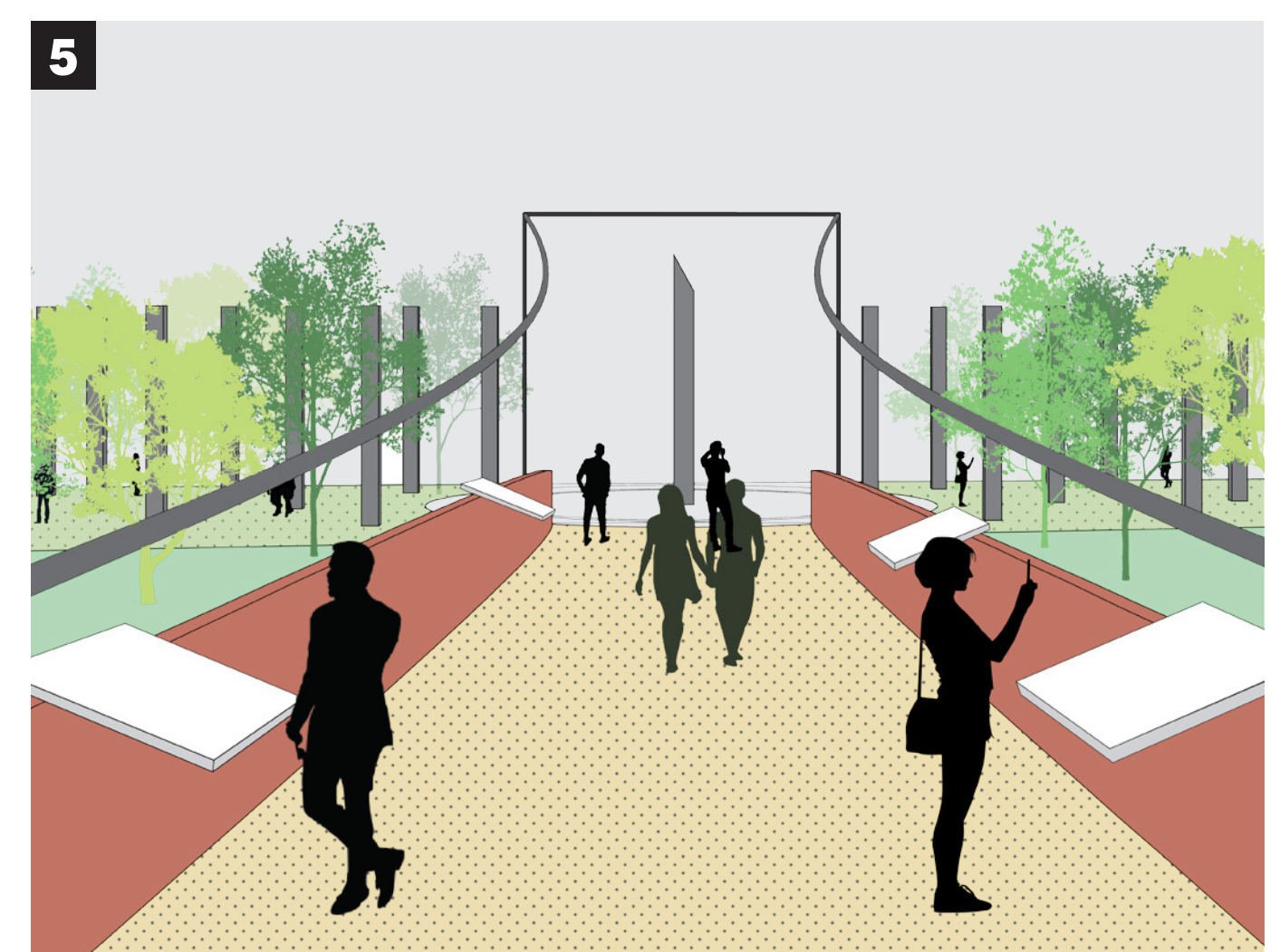
## Lower Ground - Gallery and Theatre

A gently sloping ramp leads to the basement gallery below the prism showcasing both permanent and travelling exhibits celebrating the prism community, a kind of a hall of fame for those who have built the city.



## Viewing Deck

The gallery rises up 5 stories and is accessed via a continuous ramp and display space. The roof provides a worm's eye view of the prism and looks over the forest for reflection.



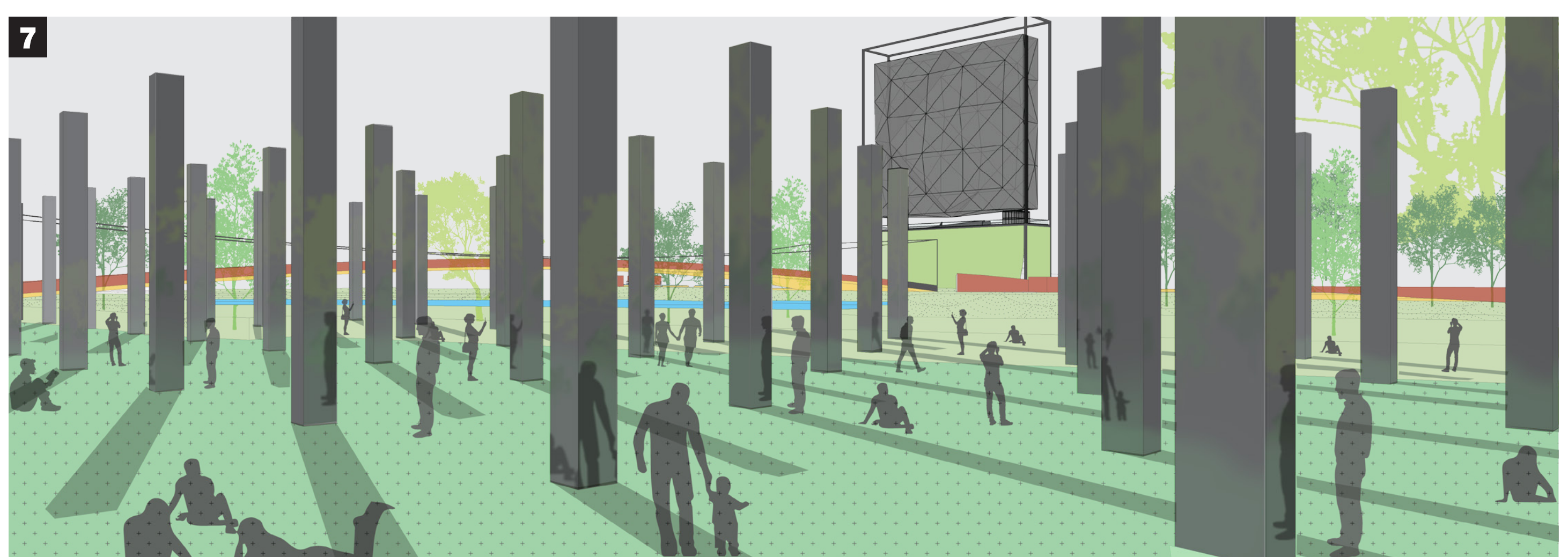
## Bridge

The pedestrian bridge across the river is an important visual and physical axis, a connector between the two parts of the site; the light tower and the forest for reflection.



## Reflection Court

The bridge curates the experience of one entering the forest for reflection to see one mirror at first and then as you draw closer to dramatically increase the field of view to encompass all 87 mirrors



## We Are.

The forest for reflection drives home the point that we, the individual and the community, are San Jose – an important cog in the wheel of this city of opportunities. The mirrors are on a staggered grid and are combined with interactive installations that caters to all ages.