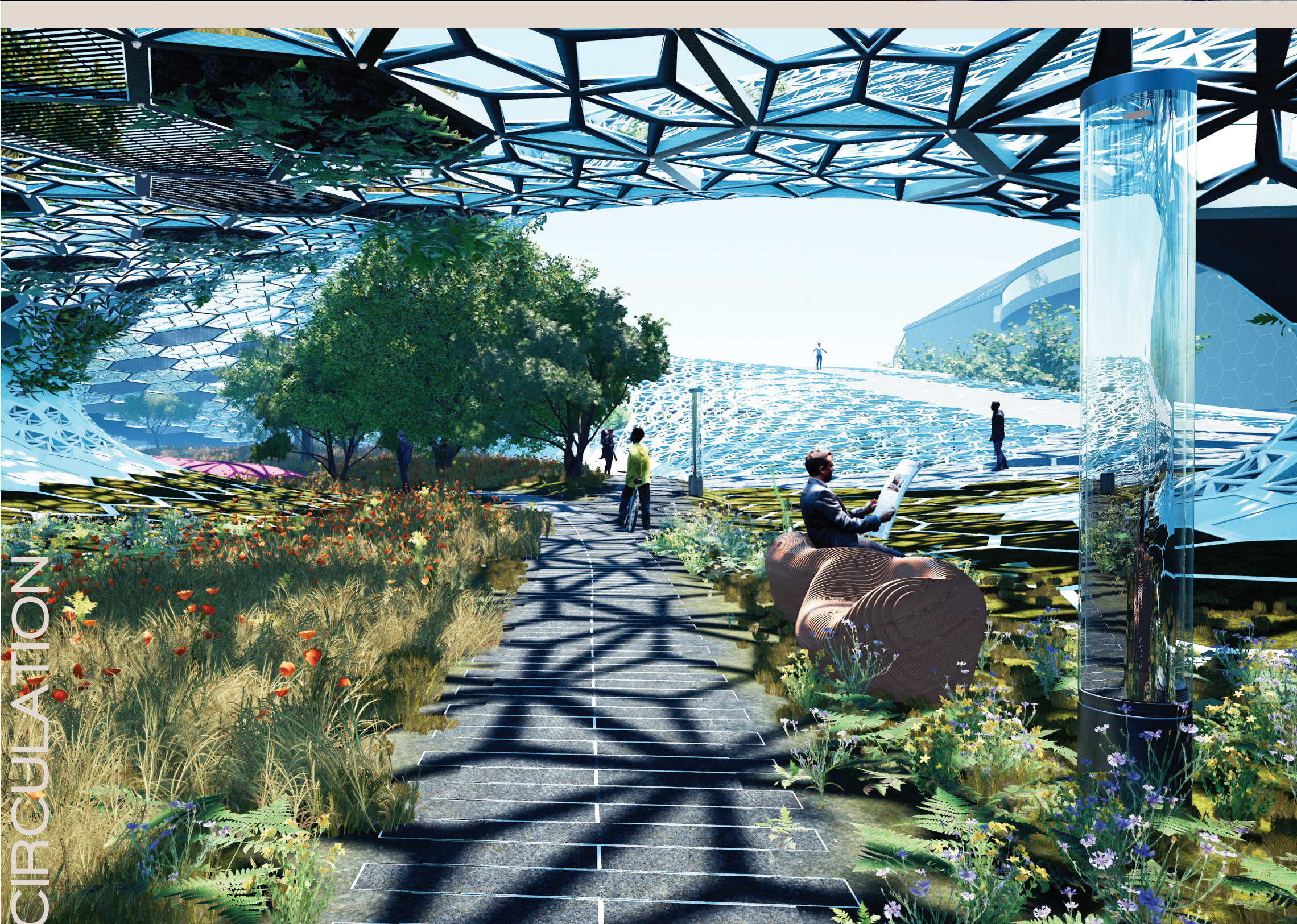
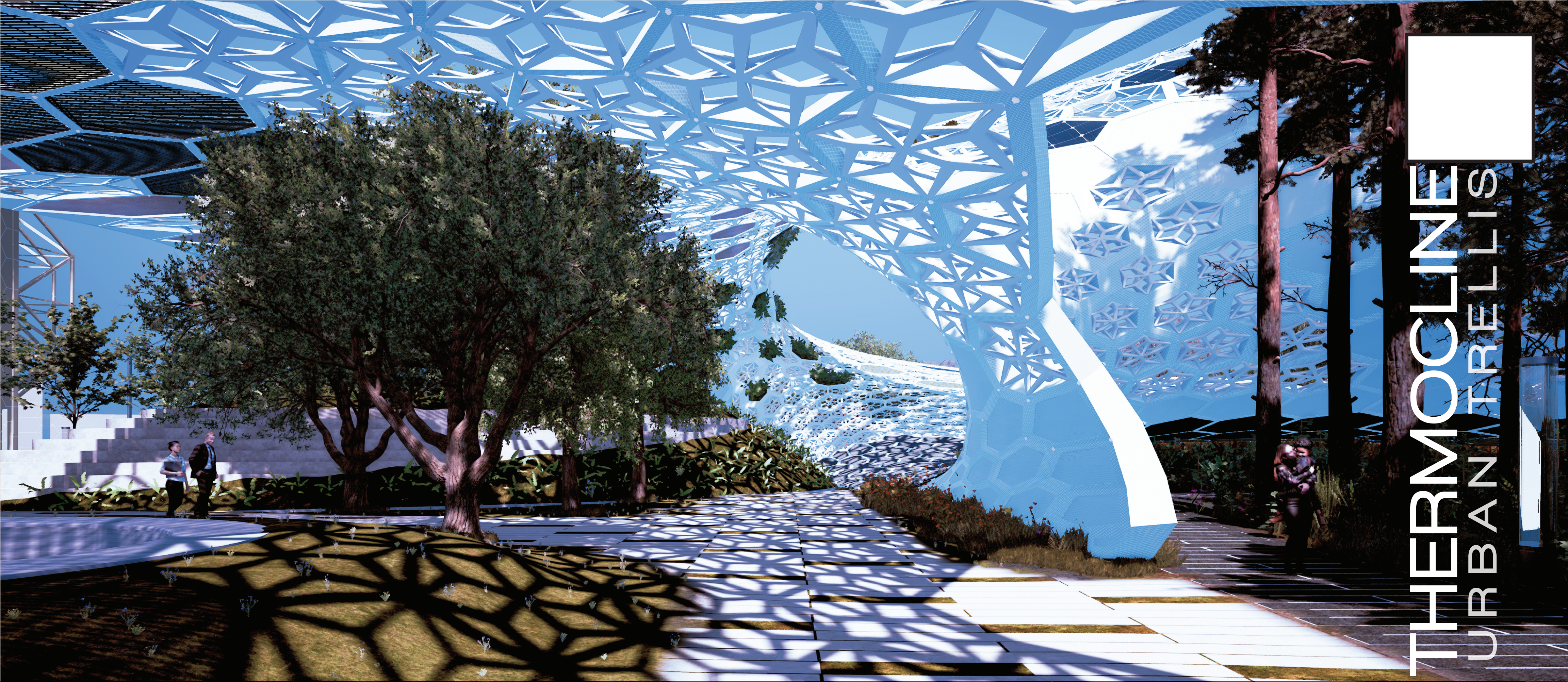
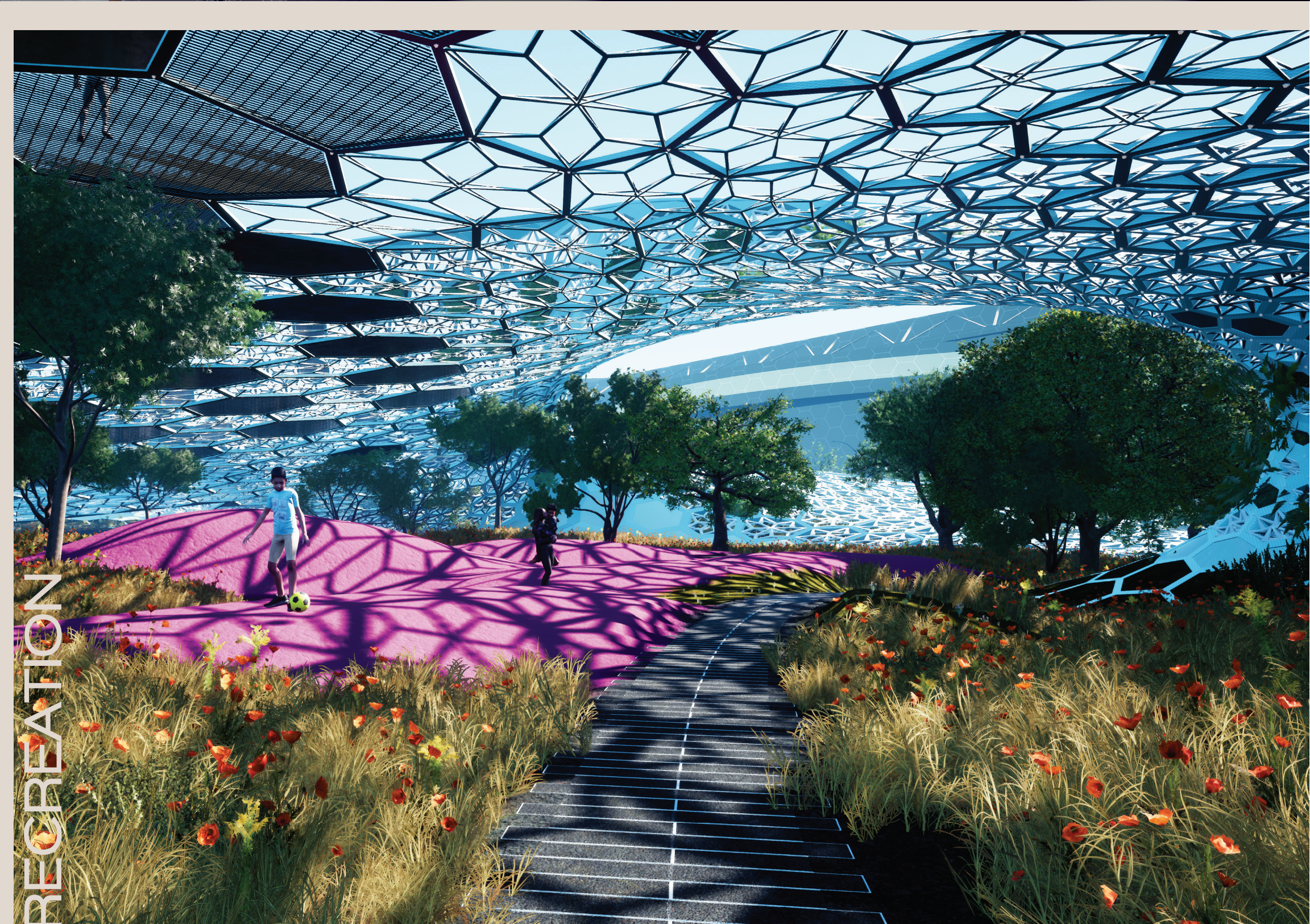


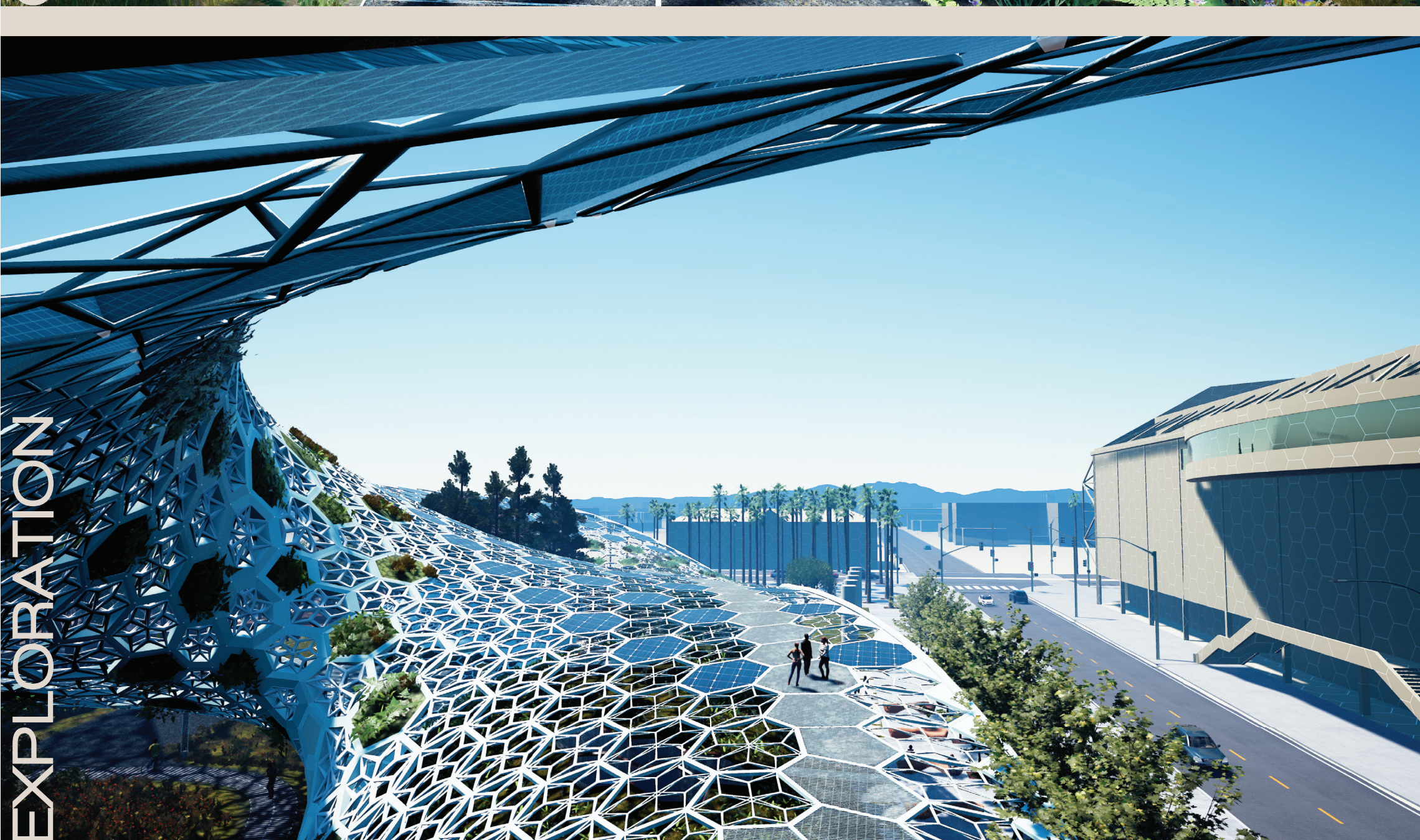
THERMOCLINE URBAN TRELLIS



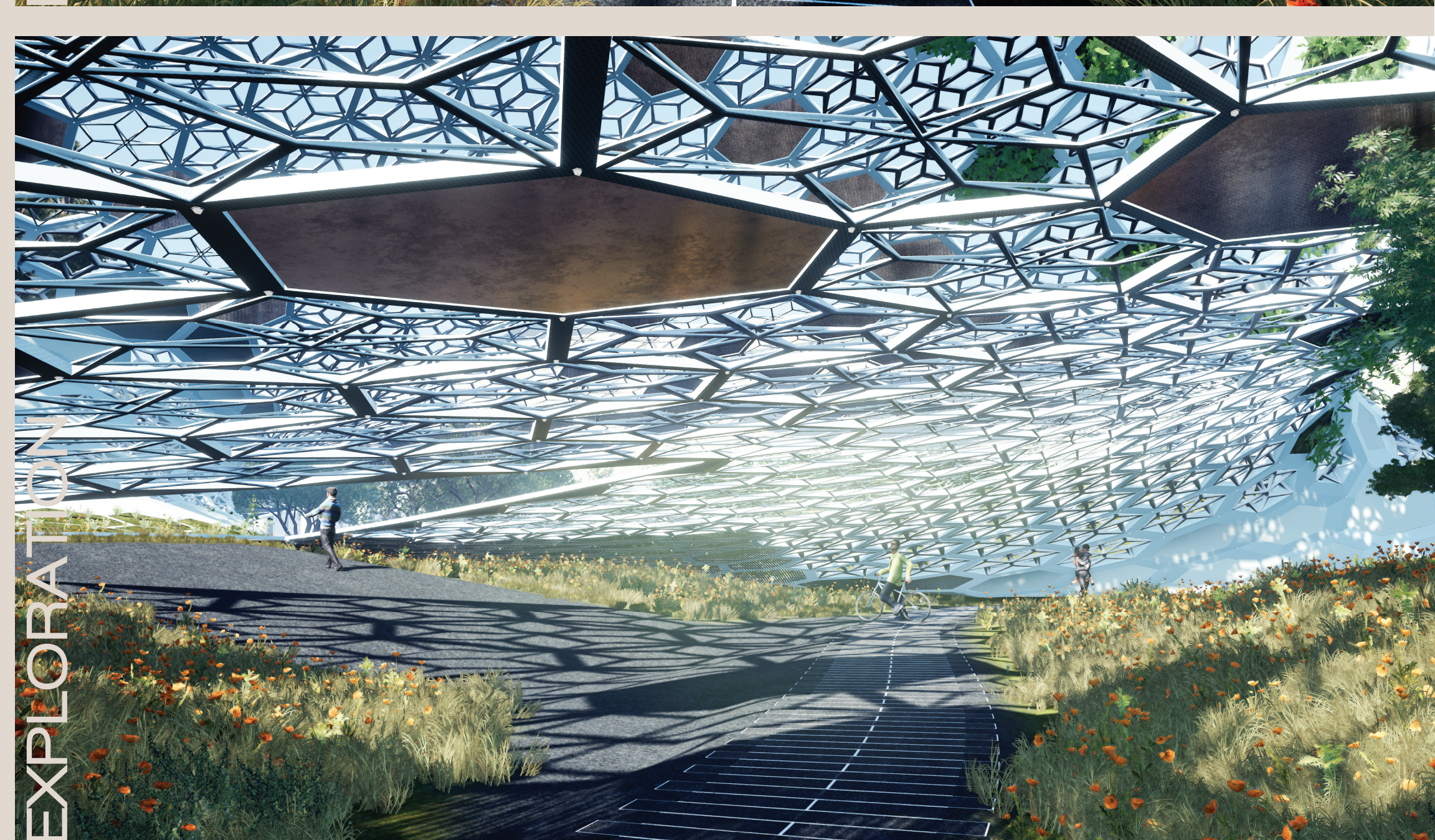
CIRCULATION



RECREATION



EXPLORATION



EXPLORA

COMPONENTS

- Component List
- Structural
- Shear
- Shade-A
- Shade-B
- Shade-C
- Porous Tread
- Photovoltaic
- Radiative Cooling
- Aerial Habitat
- Terrestrial Planted

THERMAL-SCALE

Unshaded site

Typical solar radiation reduction

Trellis base

btu/sf

- 628
- 564
- 500
- 437
- 377
- 313
- 250
- 187
- 127
- 63
- 0

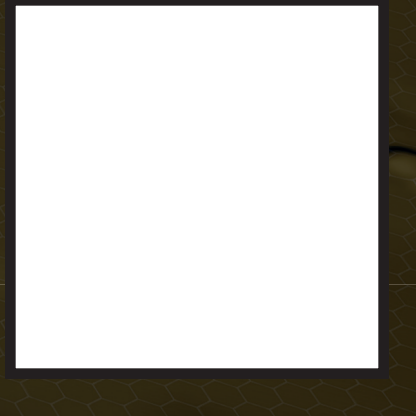
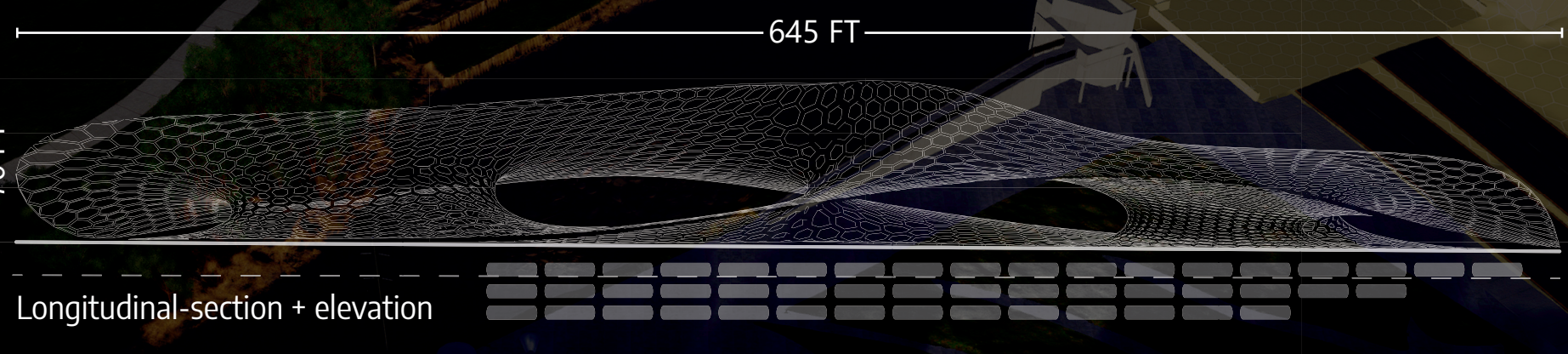
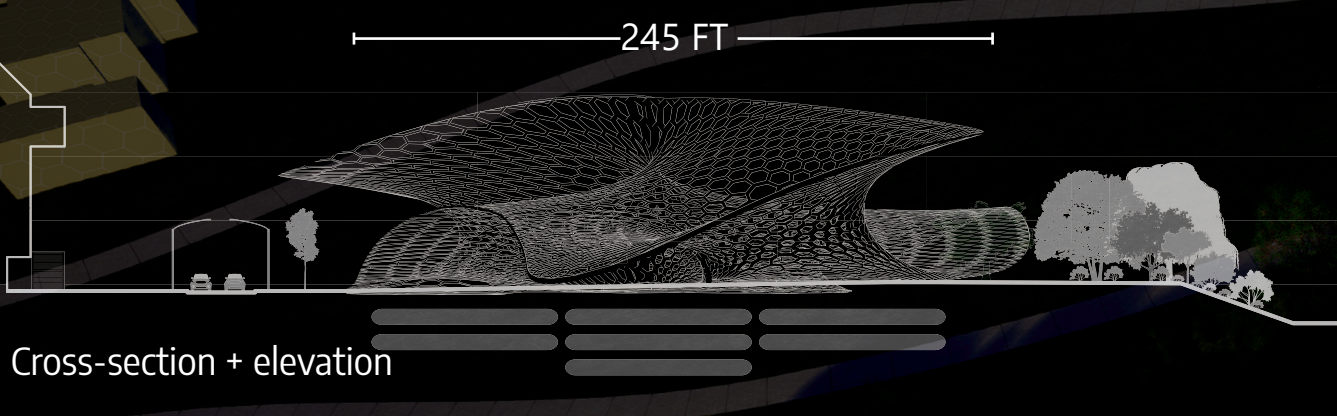
LANDSCAPE

- Acoustically dampened 2-lyr sound barrier
- Restoration HQ & Seed Library
- Subsidized Housing (park stewards & restoration interns)
- Passivhaus with positive-pressure hvac system
- Vegetated Bridge,* Bicycle-Pedestrian, W St John St
- Guadalupe River Trail
- Los Gatos Trail
- Confluence Point
- Extended Pedestrian Zone*
- Thermocline Urban Trellis
- Pavilion
- Spray Park
- 5-Skaters

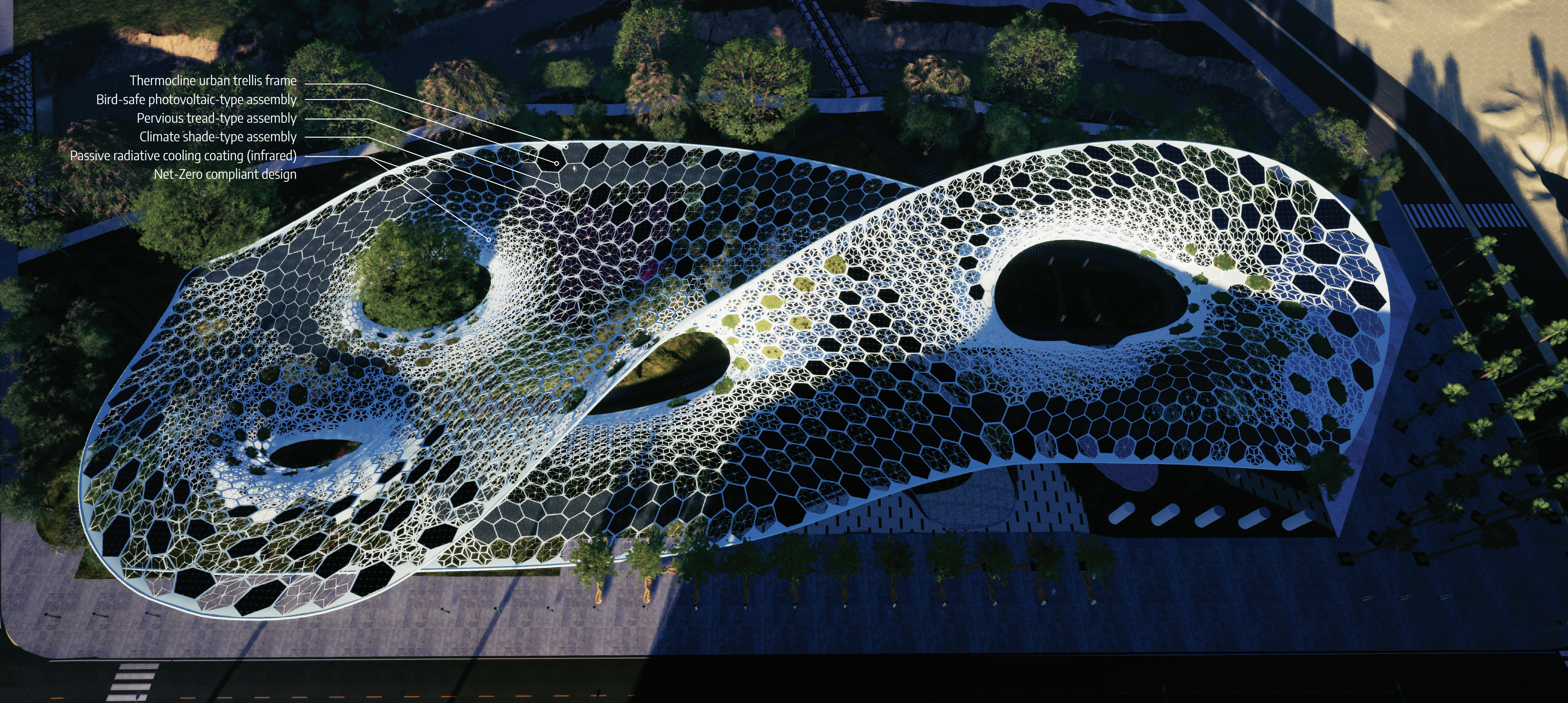
- Existing Riparian Area
 - Improve and restore
- Extended Riparian Area
 - Localized riparian plant palette
- Upland Plantings
 - Natives for seed collection
- Terrain Park
 - Topographical micro-climates
- Recreation Mounds
 - Undulating rubberized surface
- Circulation
 - Ground & lower-trellis network
- Circulation
 - Upper trellis (OSHA TBD)
- Circulation
 - Existing trails to remain

*proposed pedestrian improvements outside of scope

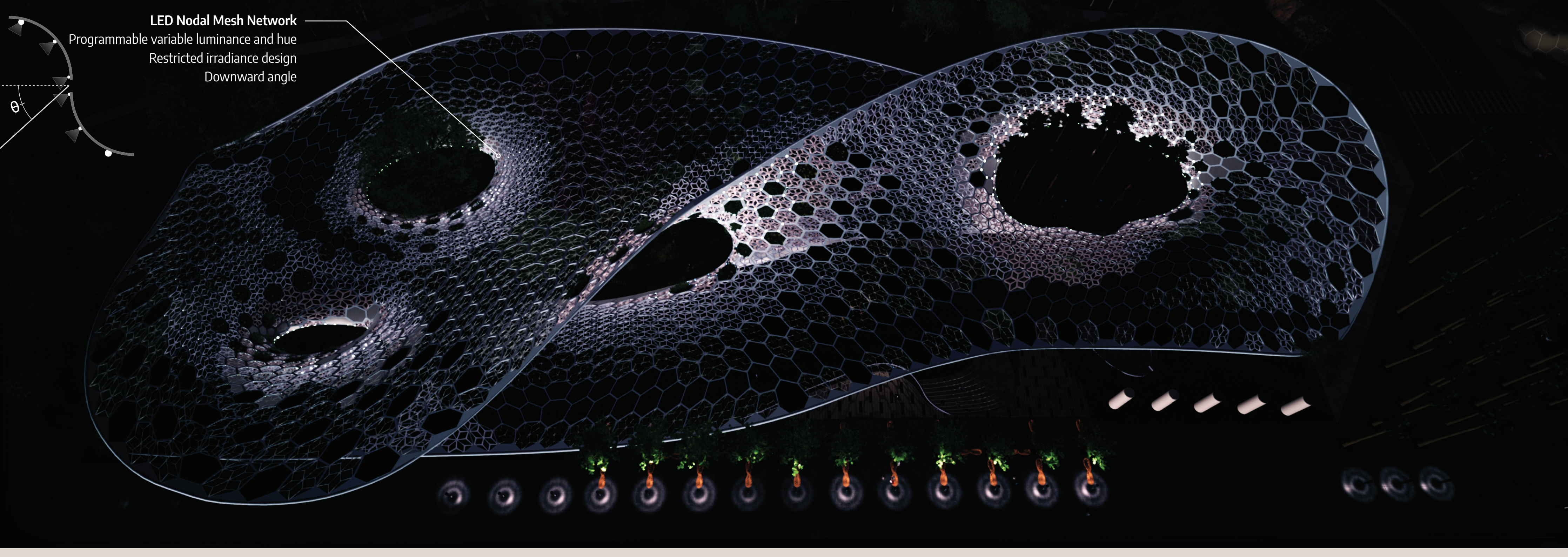
SECTION



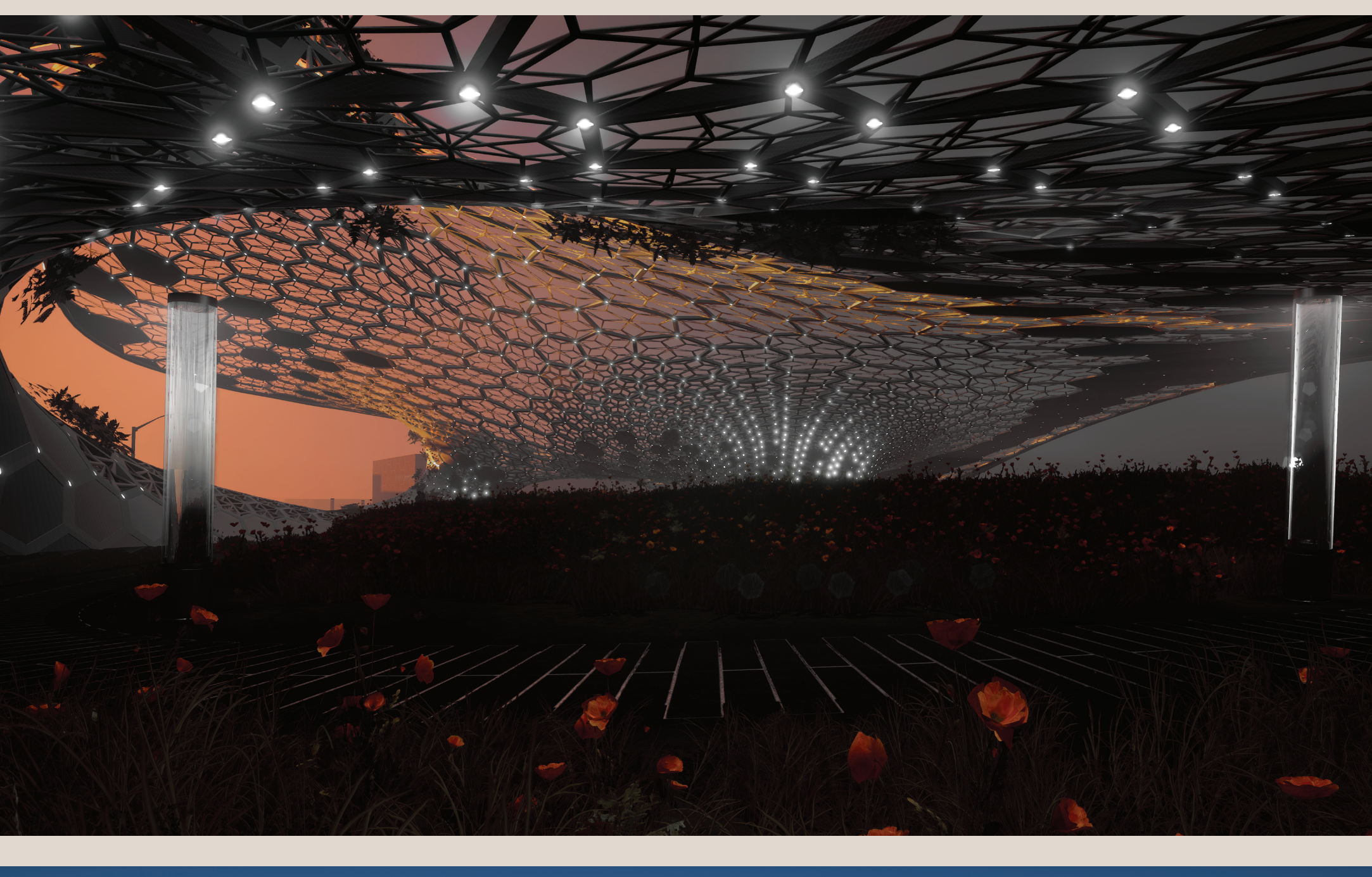
ASPECT



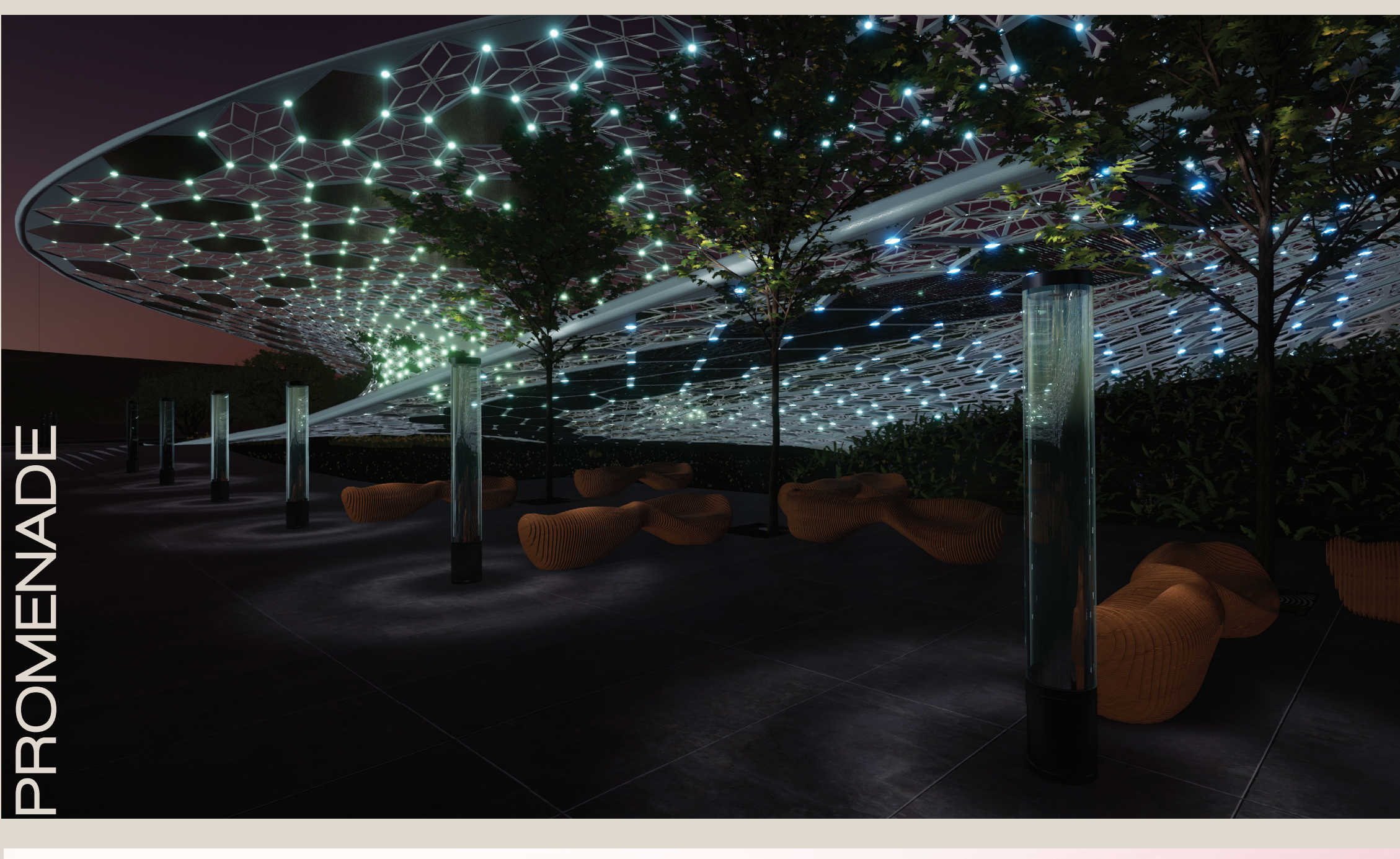
LUMINANCE



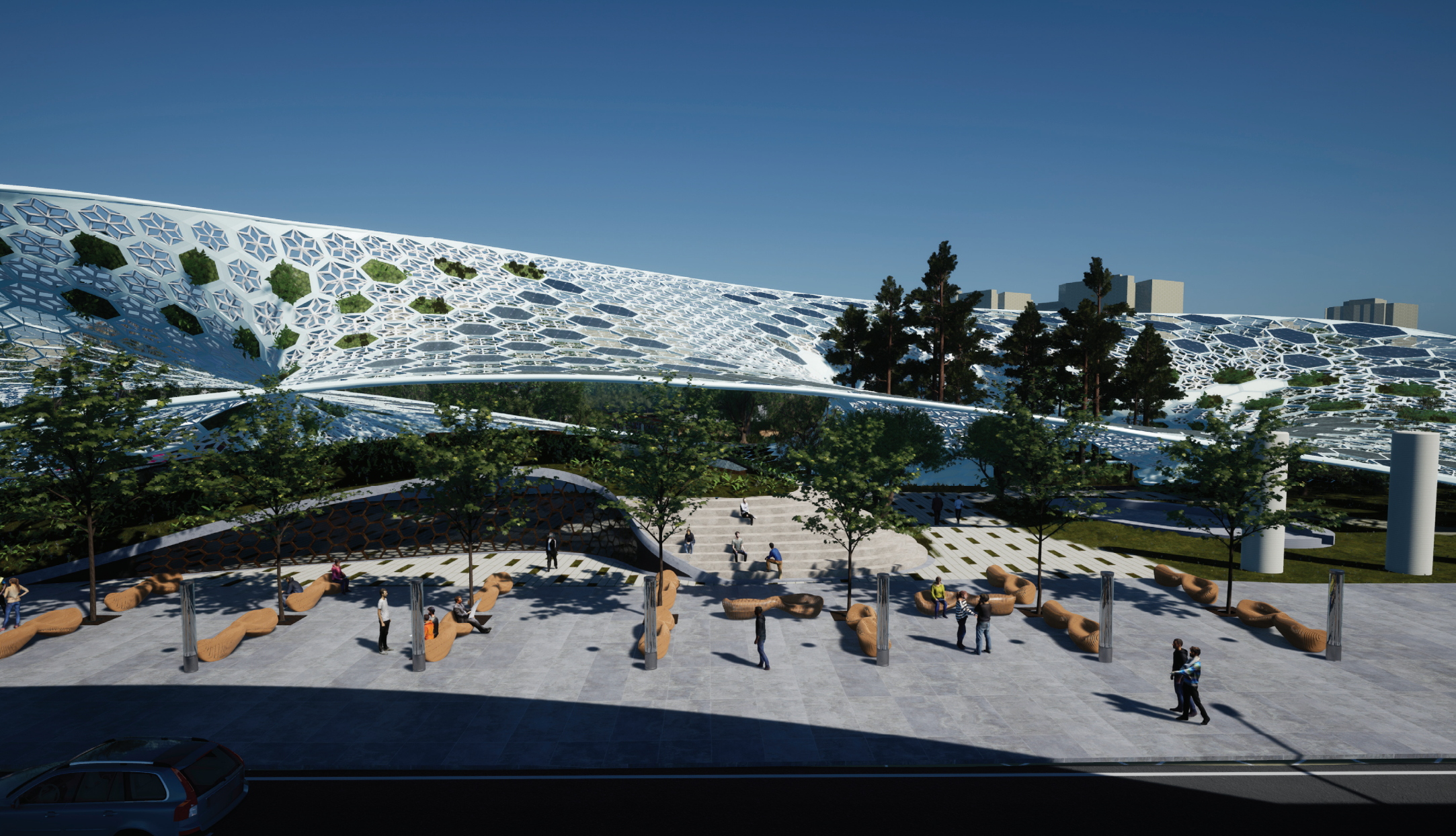
AMBIANCE



PROMENADE



PEDESTRIAN



EVENING

