

# urban confluence competition

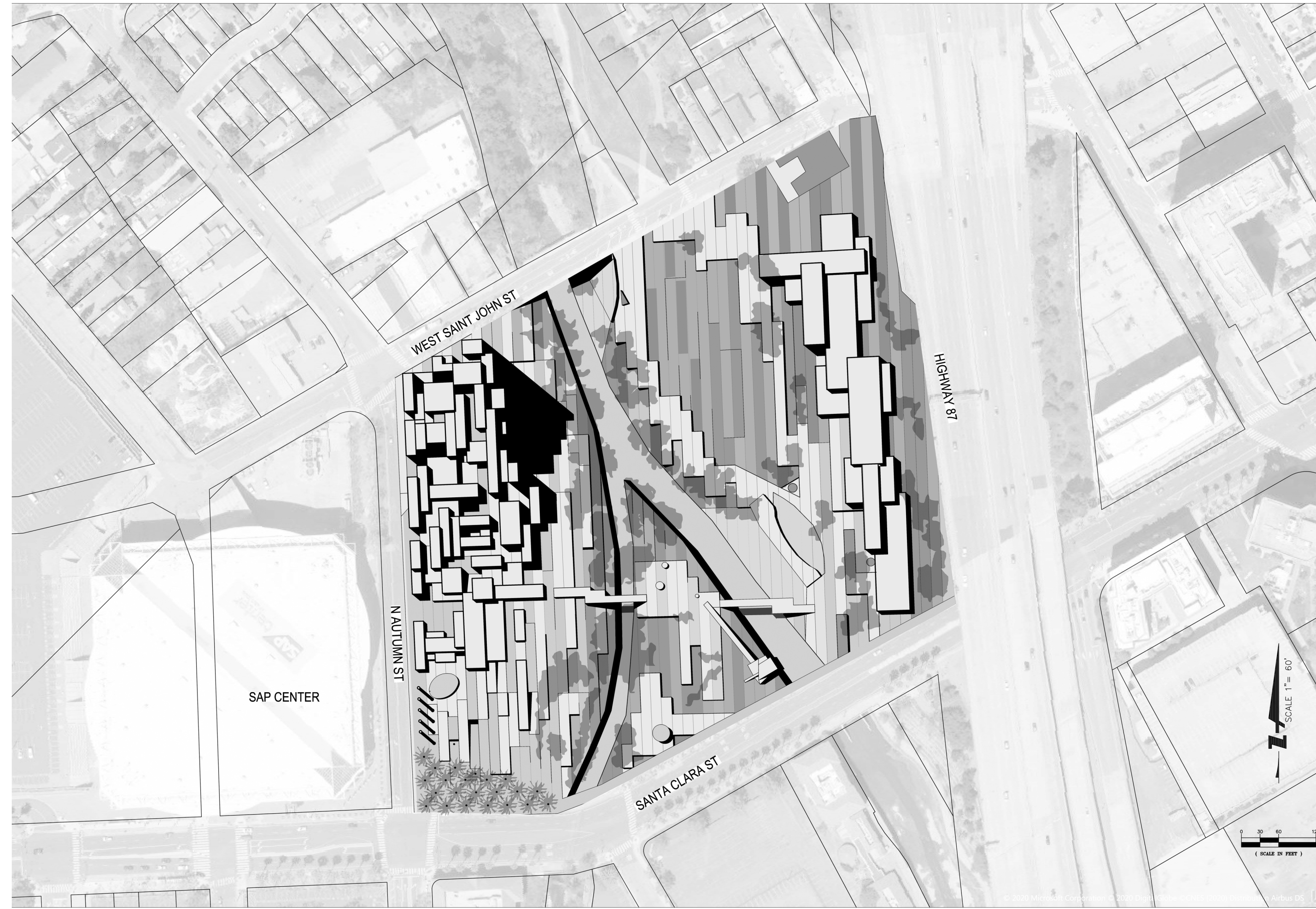
## Ground Tower

The icon is not an icon, is a landmark; a mark of the land that emerges and gives his rules to the urban space. A system of pixelated icons talking about diversity in which the ground rises and shows his presence.

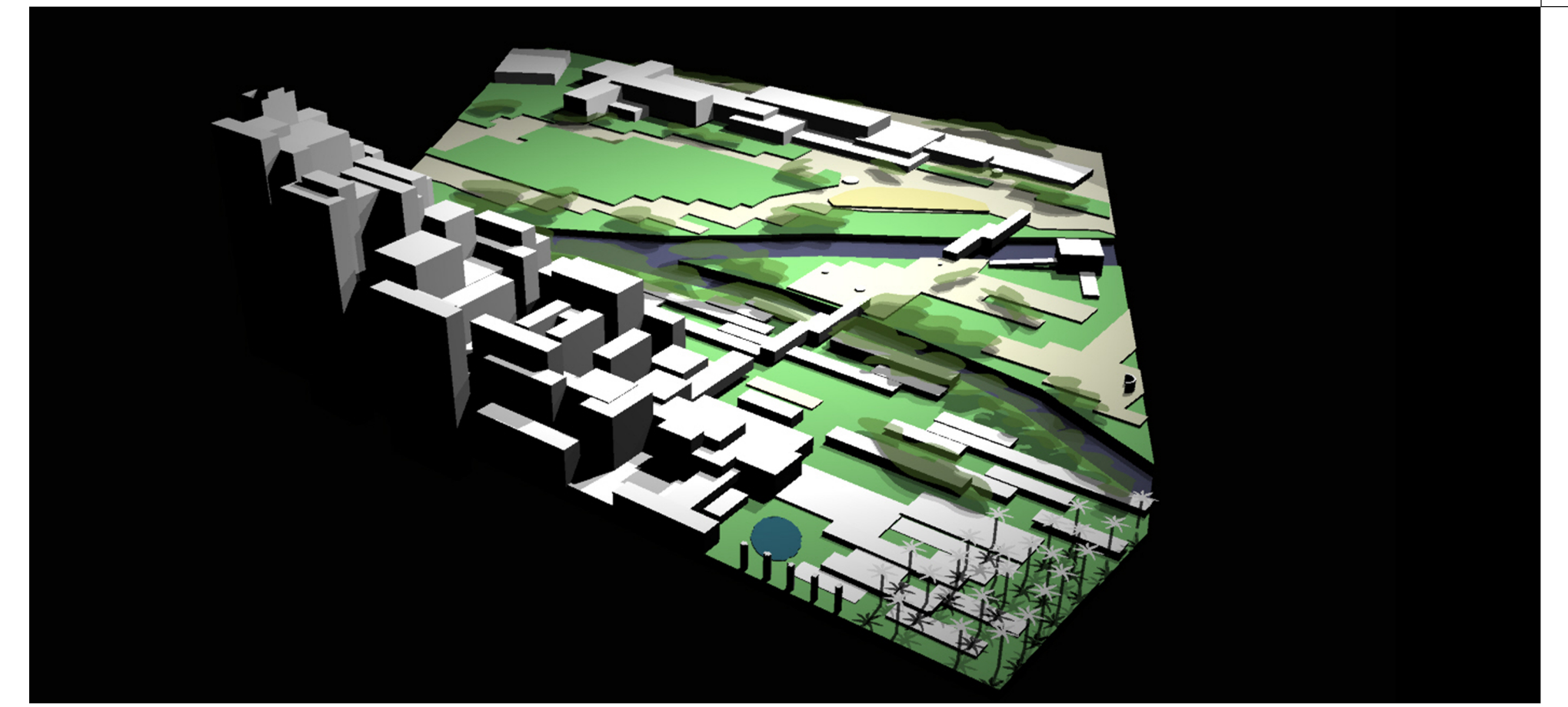
Bits of land that grow and becomes a tower. Not a regular tower, but a high point to recognize the significance of the landscape.

The project is a complex ensemble of components in a hardware-land, as a infrastructural order to respect the natural environment and the conditions presents in the site.

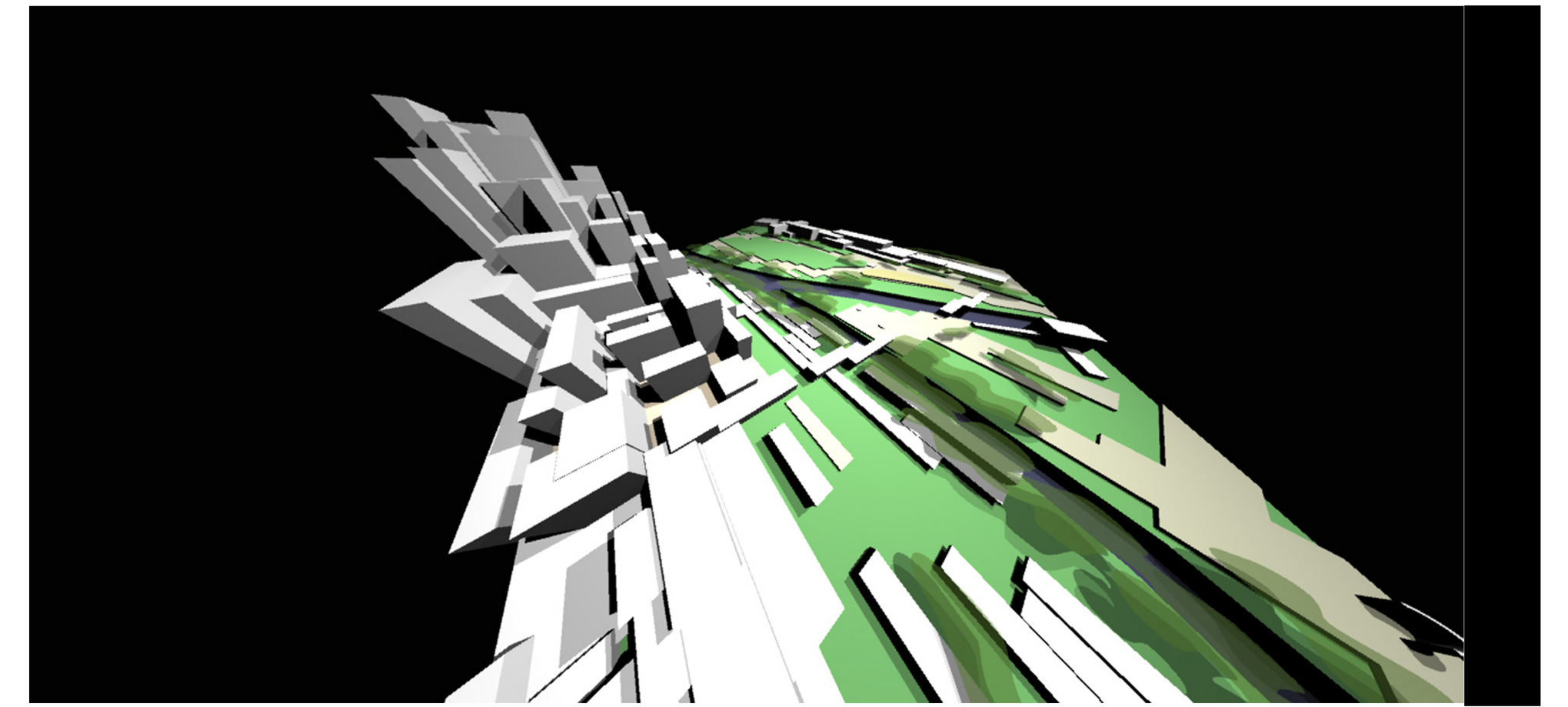
The proposal starts from a striated ground because is a ground that reveals his tradition, layer by layer, of native cultures, pioneers, urban development and the rise of digital technology. The site is informed by data that represents each of the cultures that make up the current society in terms of equality and respect for all the people and his way of life. Changing information modules that refer us to an evolutionary and multicultural thinking. The components of the architecture are a plug-in elements that will be actualized when the conditions change. The project is proposed as a place for creative thinking to celebrate innovation. And the architecture in symbiosis with the natural and cultural landscape.



site plan



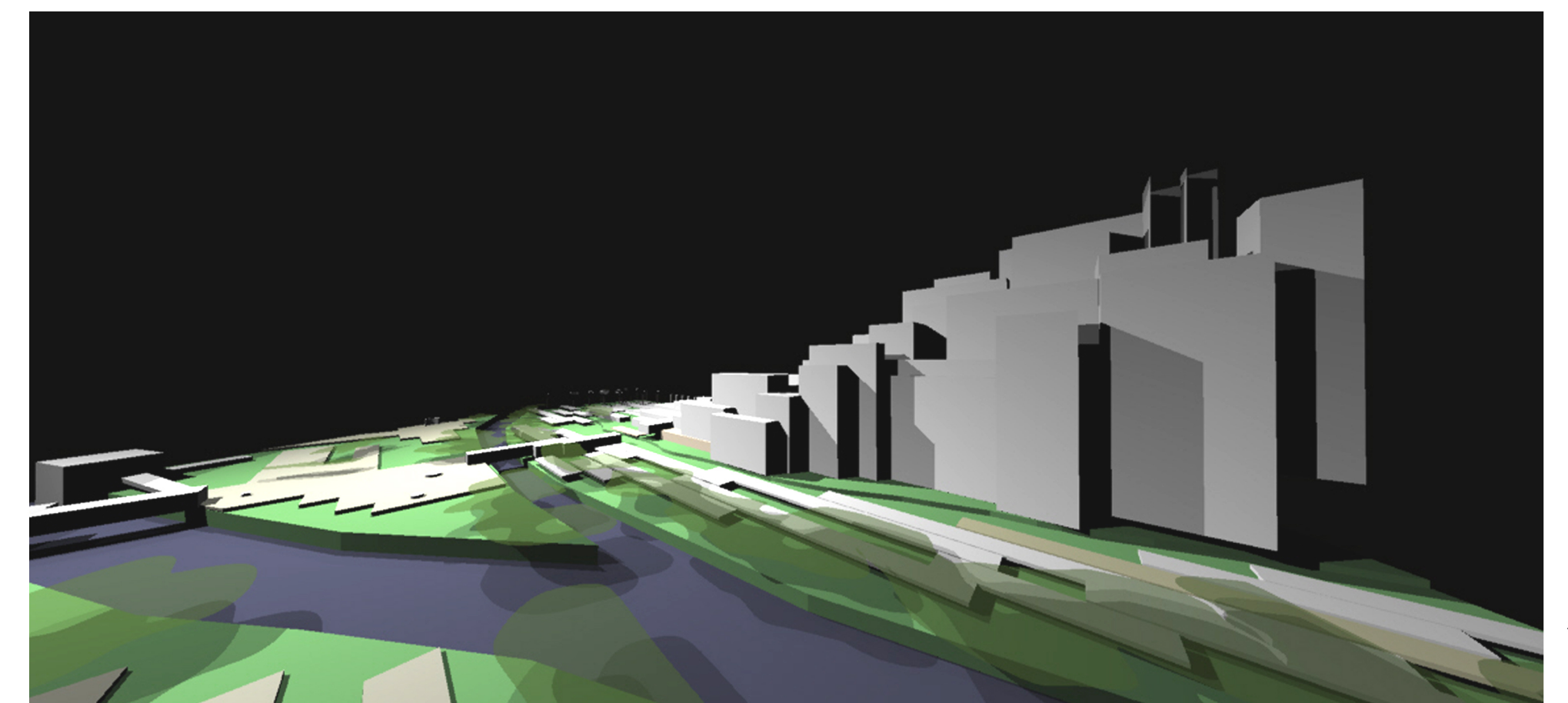
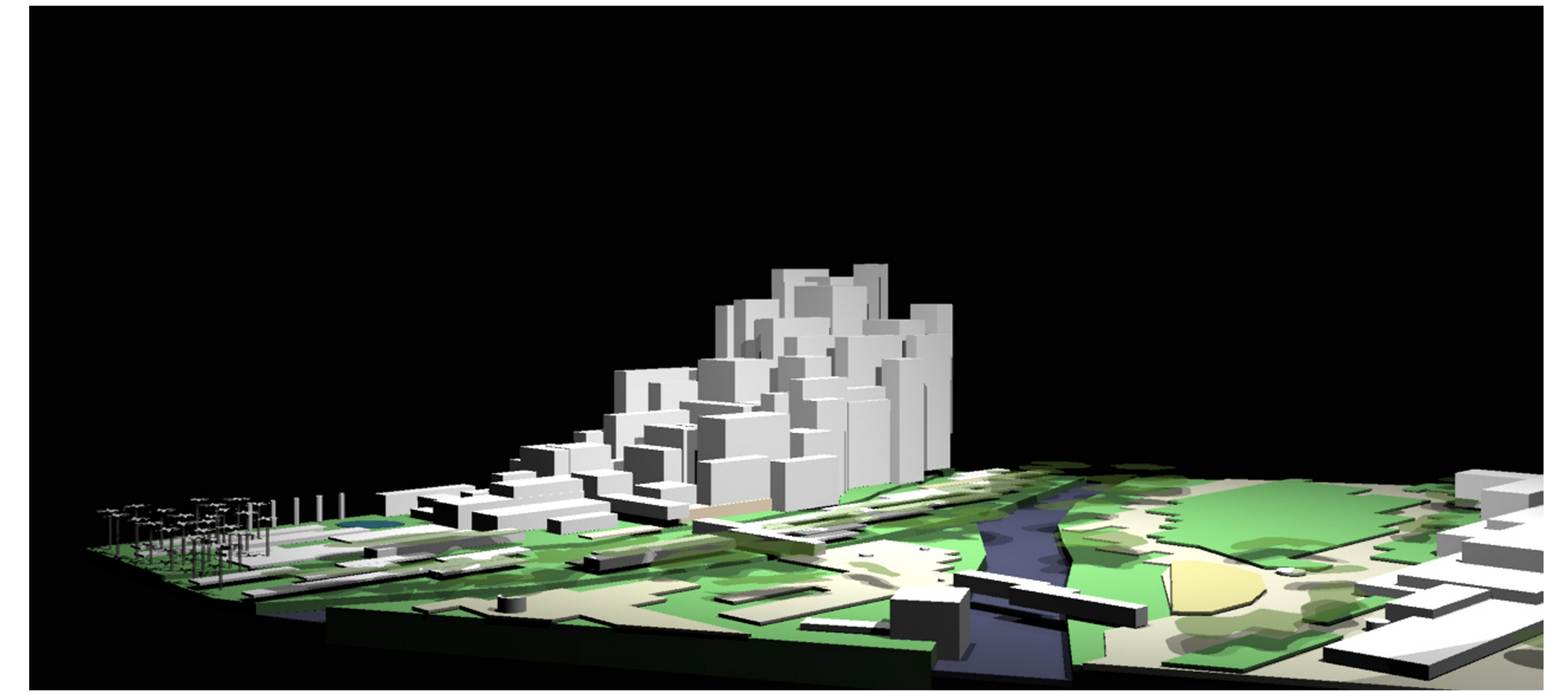
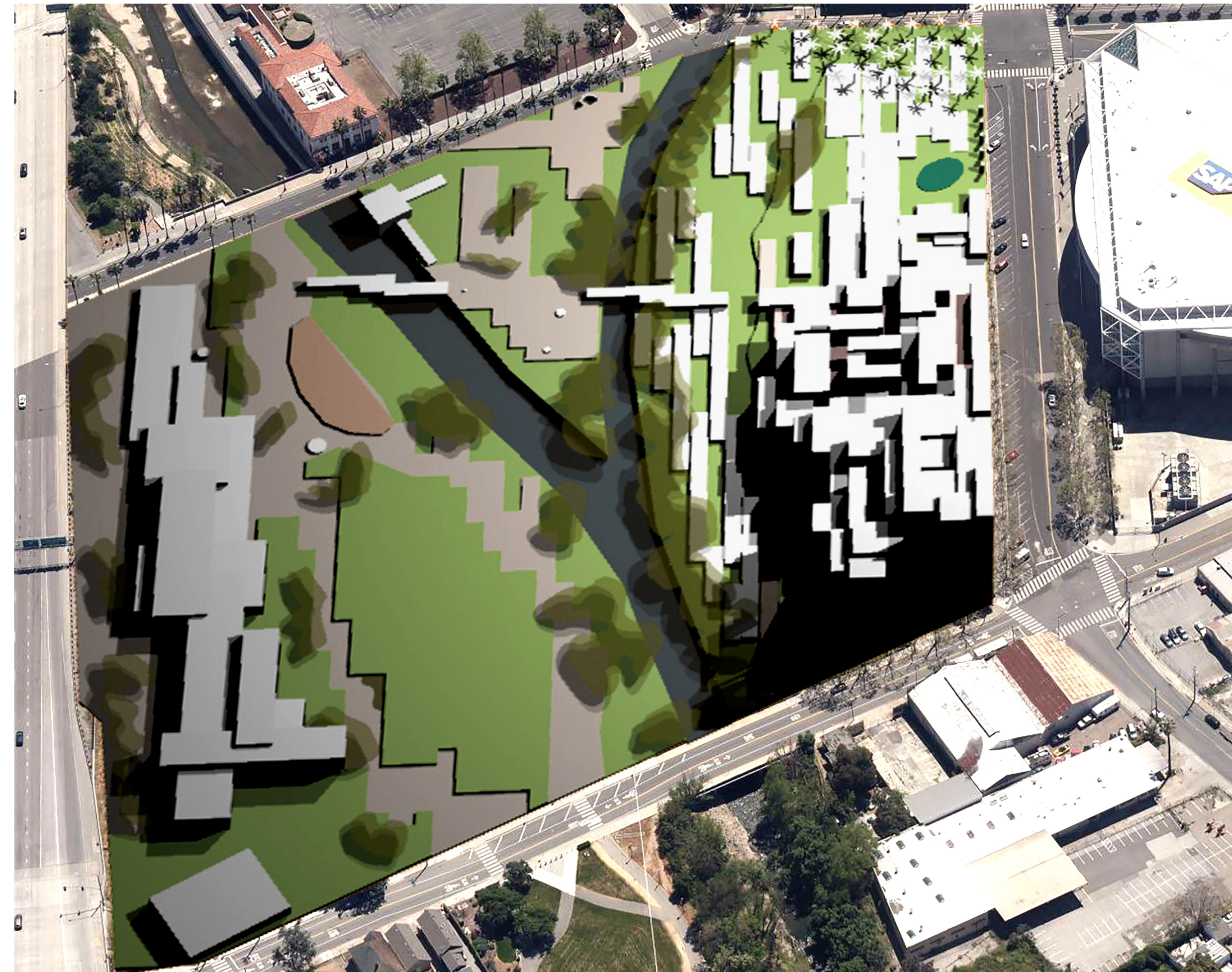
perspectives



view from nautumn street



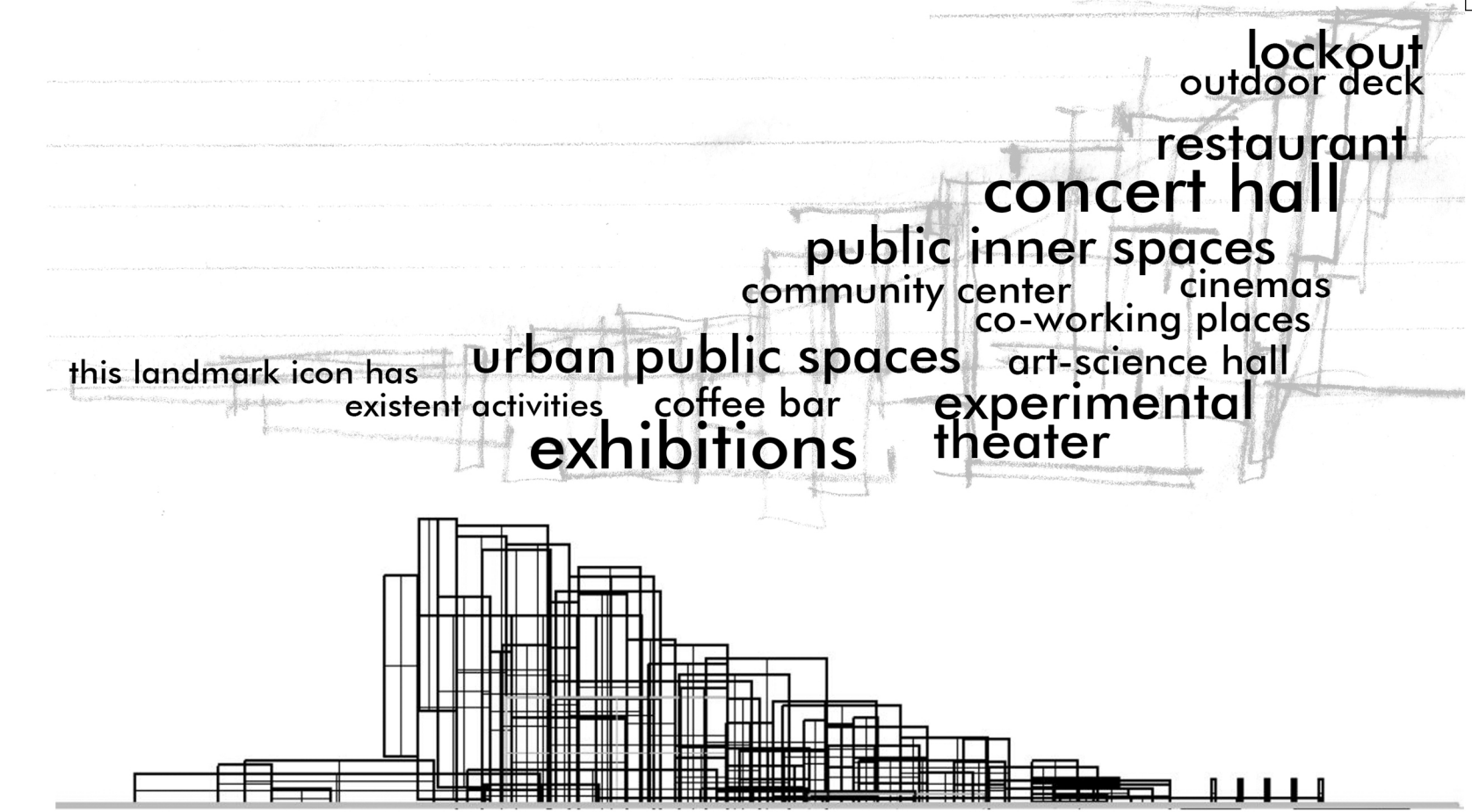
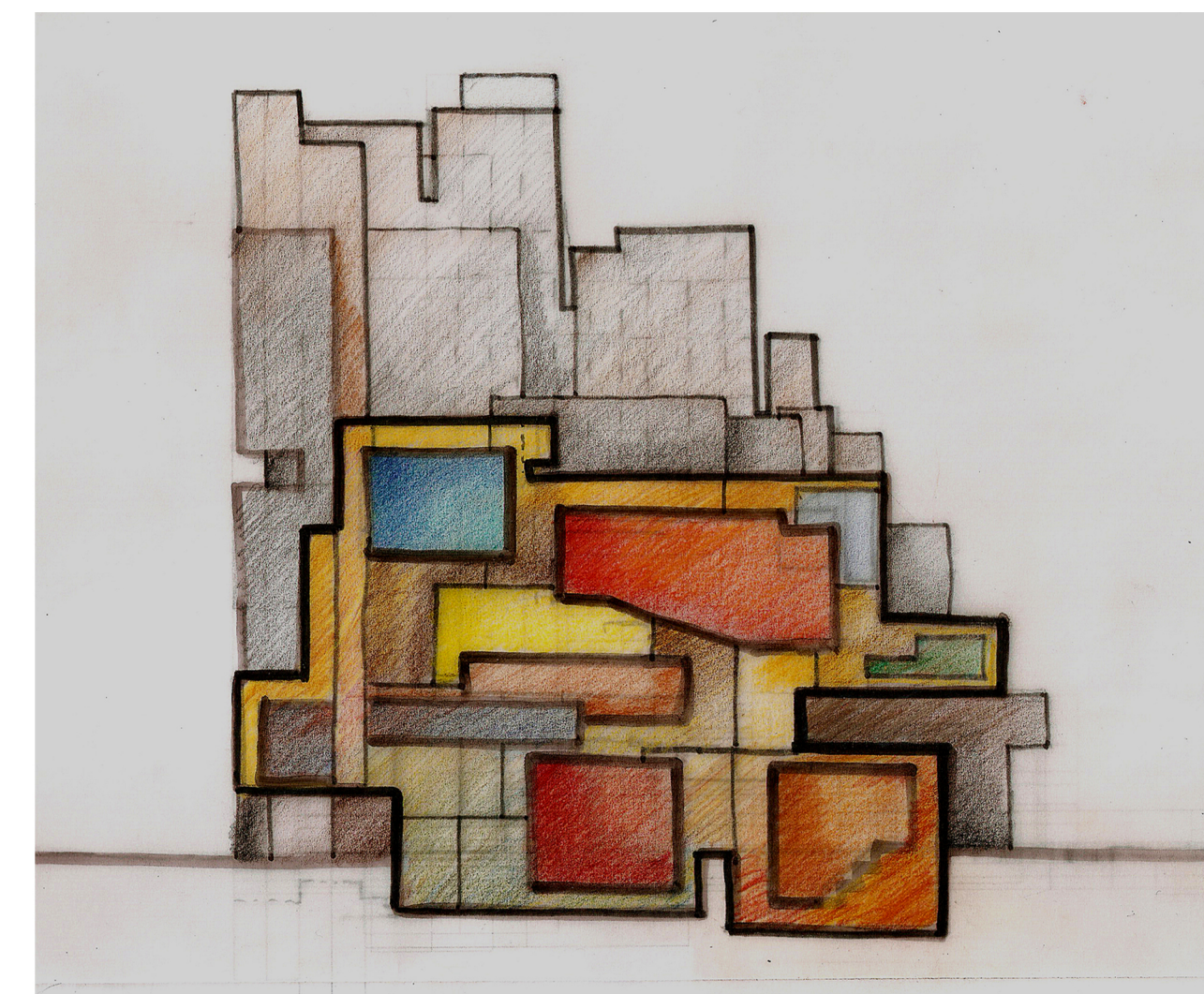
west aerial view



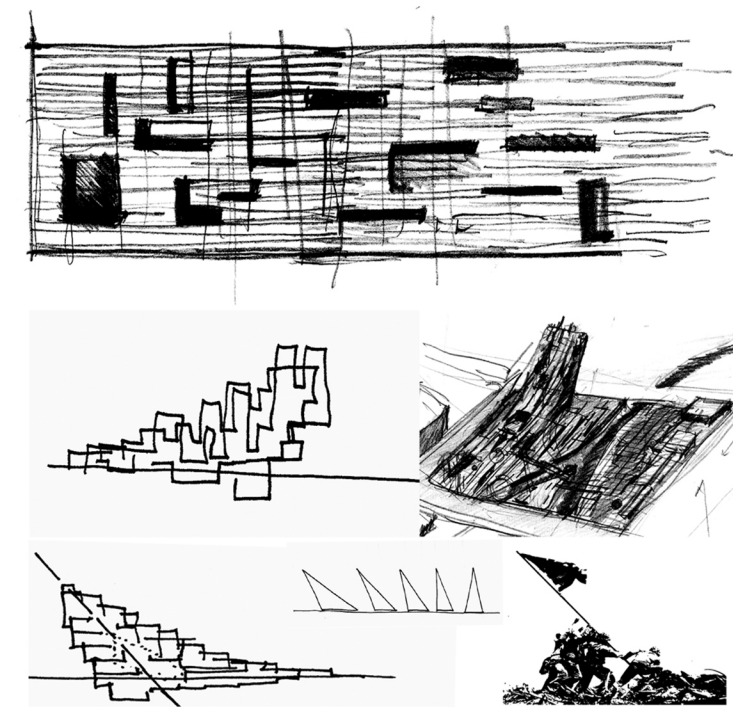
# urban confluence competition

## Ground Tower

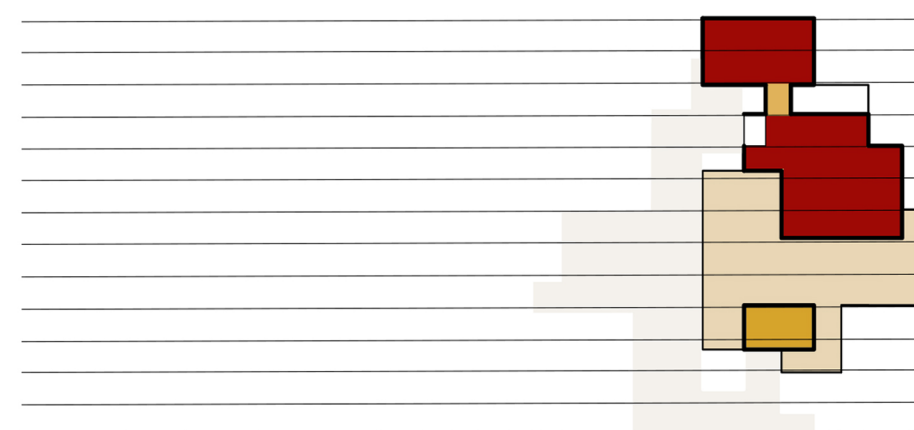
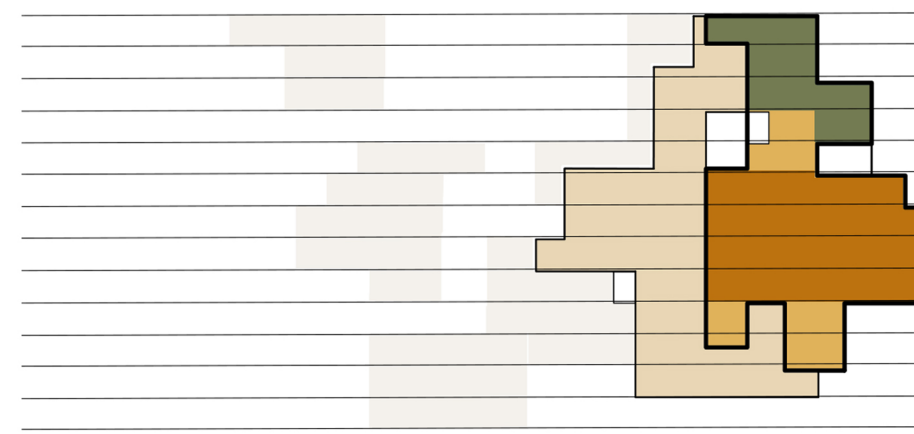
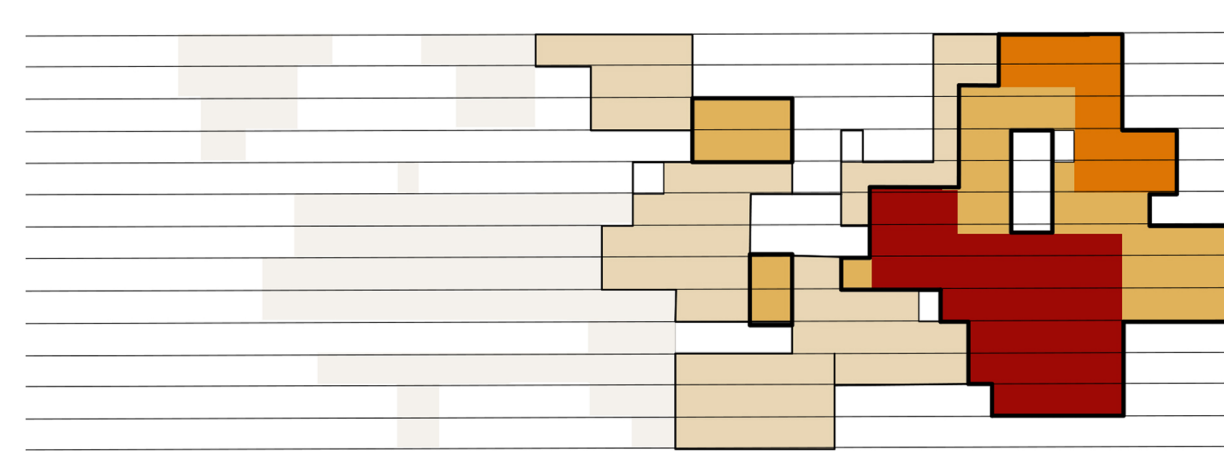
The design is organized by a geometrical and spatial field that involves the entire site through grooves that cross it, rising and dipping according to conditions and proposed activities. Over this geometry the new spaces grow up like a native textile surface, including the significance preexistent elements as Five Skaters, San José Vietnam Memorial, Weaver's Gift, Tributaries Monument, and activating the Confluence Point, Santa Clara Street Overlook Plaza and others existing places. The design includes preserving the natural conditions of water courses and landscape that identify this urban space. In the west side a building emerges from the ground composed by pieces that mean the multicultural society and grow up as innovation does. In the east side the architecture houses sport activities. Two bridges connect the whole. The lighting proposed shows a changing icon, provided by sustainable energy.



landing view

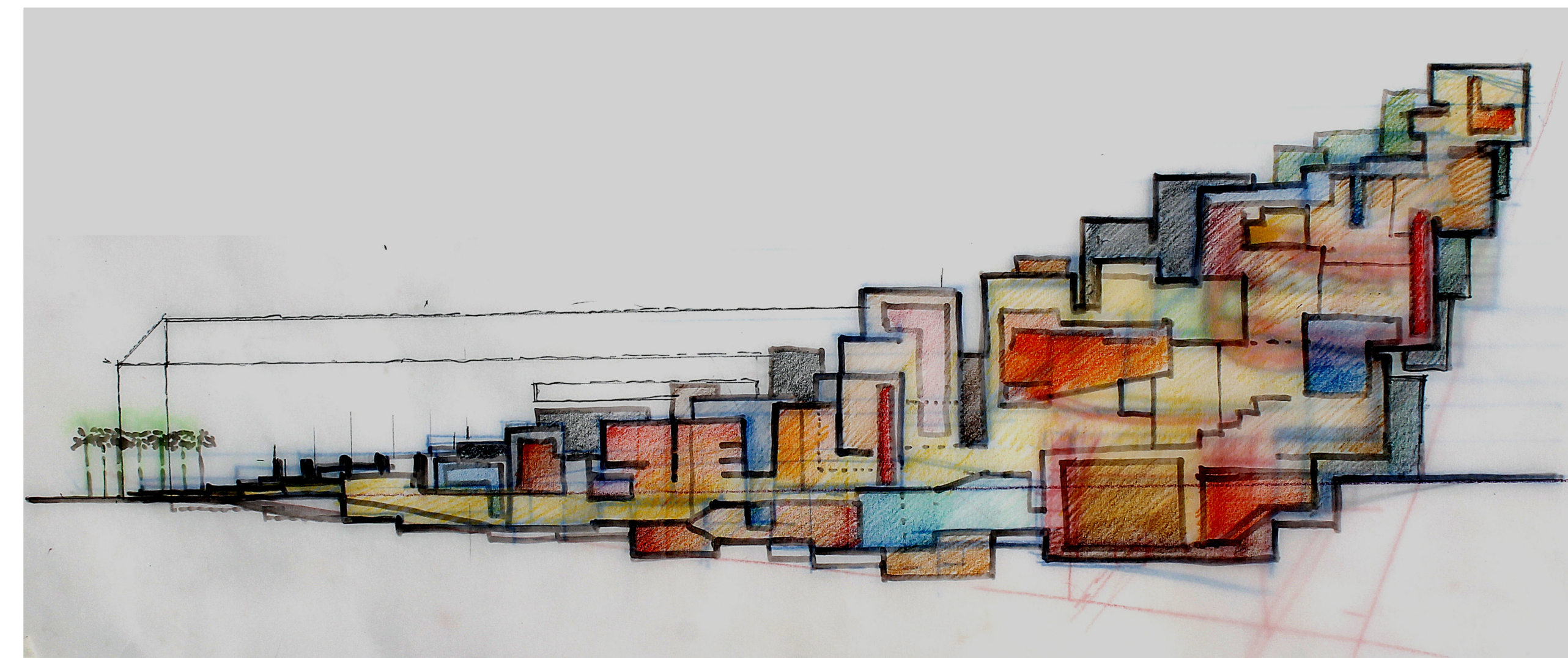


conceptual sketches

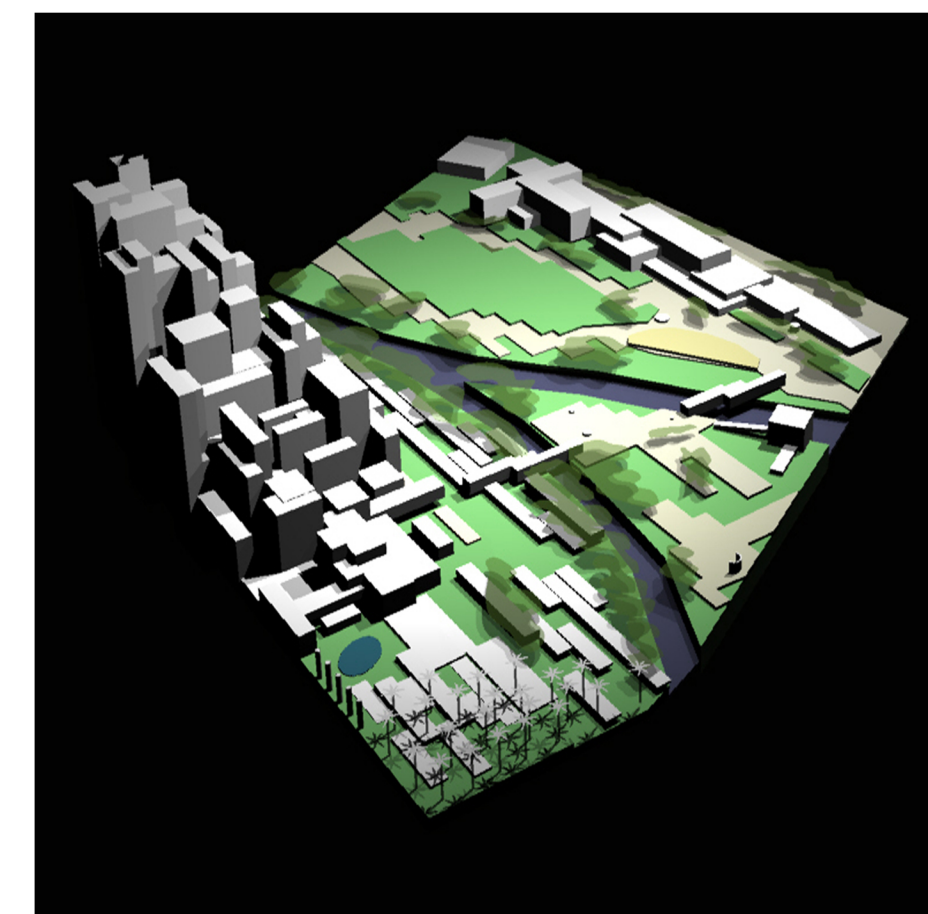
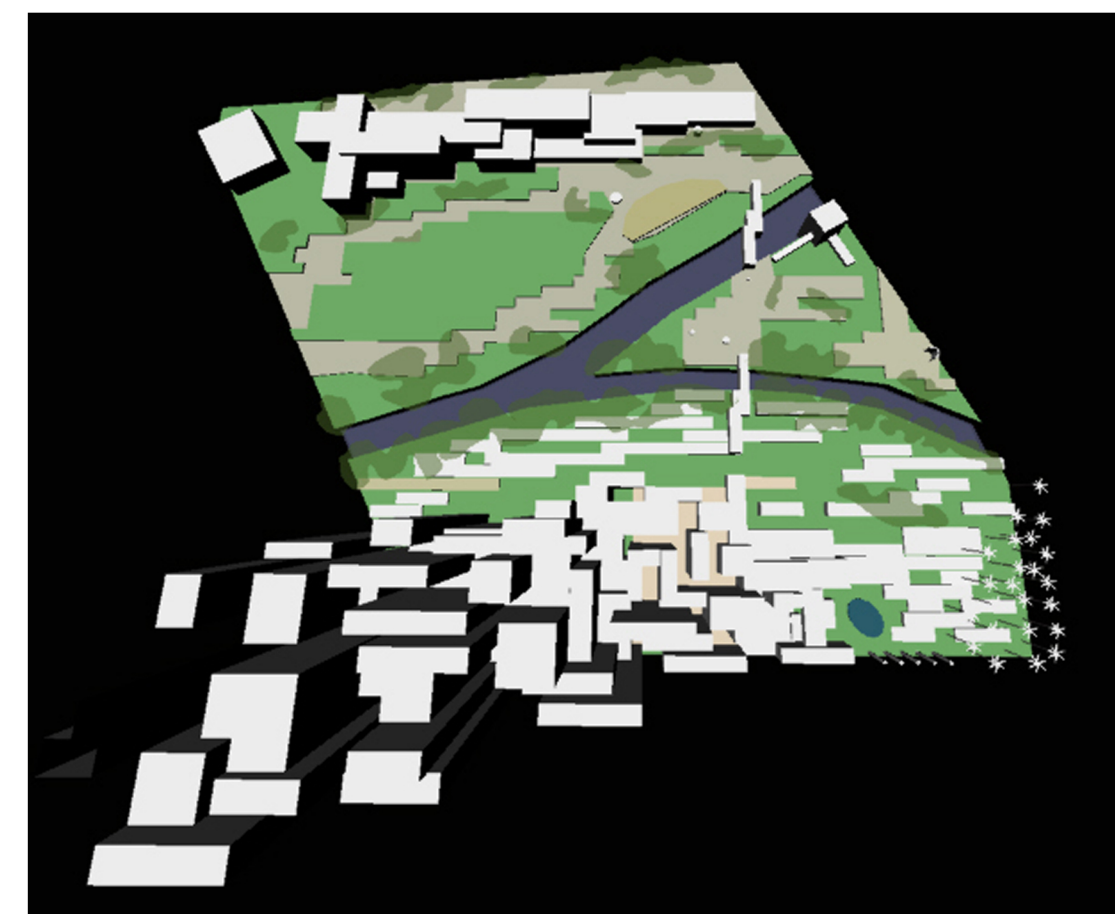


plans of representative levels

sections and proposed spaces

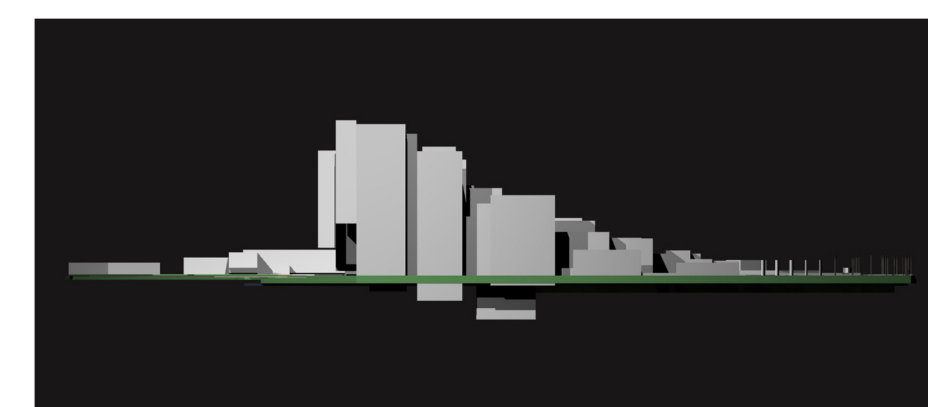
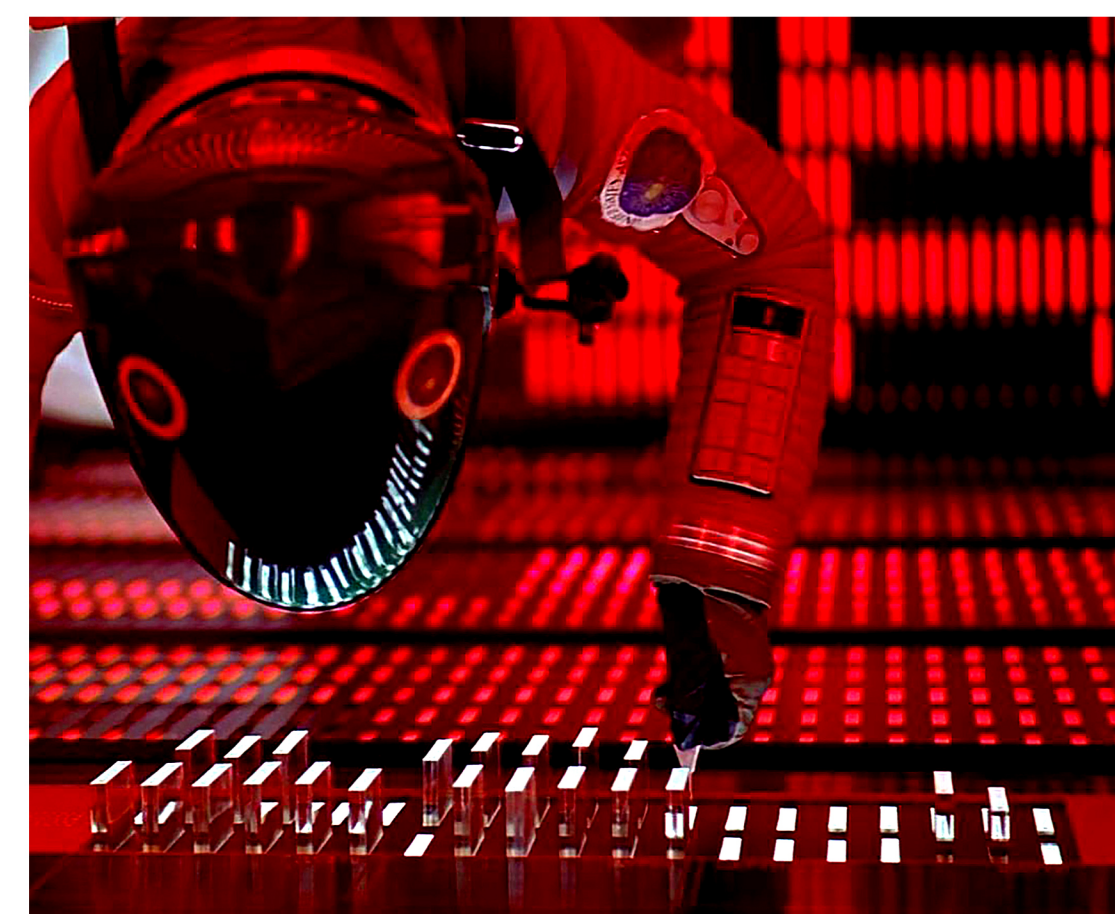


perspectives



perspectives

activation



west south north and east elevations

