

# URBAN CONFLUENCE SILICON VALLEY



## 1 CHOOSING AVAILABLE DESIGN AREA

WEST SIDE AREA WAS FINALIZED. WE WANTED OUR DESIGNED ICON TO BE PART OF THE EXISTING NATURAL HABITAT AND TAKE THIS AS A CHALLENGE



## 2 THREE TOUCH DOWN POINTS

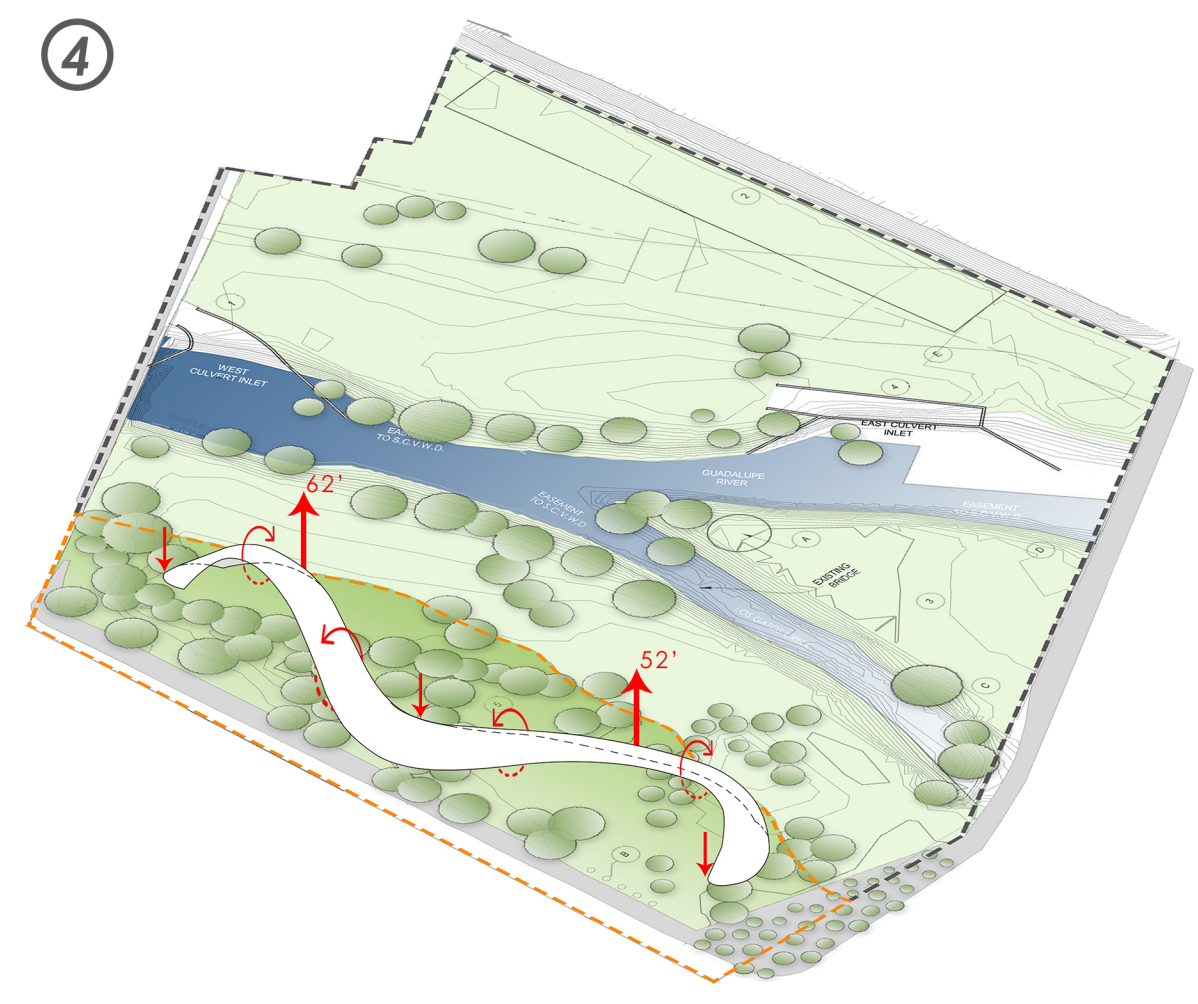
CHOSE POINTS WITH MINIMUM TREES FOR THE STRUCTURE TO TOUCH THE GROUND FOR FOUNDATIONS. ALSO, MINIMISING ANY DISRUPTION TO EXISTING SURROUNDINGS. THESE THREE POINTS WILL ALSO BECOME THE MAIN SOCIALIZING AND COMMUNITY SPACE FOR INCOMING PEOPLE



## 3 BASIC MASS DEVELOPMENT

DEVELOPING AN ORGANIC FORM WHERE AS CREATING CURVES AT THE THREE TOUCH DOWN POINTS TO INCREASE GROUND CONTACT FOR MORE STABILITY

THESE CURVES ALSO REPRESENT THE SUCCESS STORY OF SILICON VALLEY OVER TIME



## 4 ELEVATING AND ROTATING

ELEVATED ONE POINT TO 52 FEET AND OTHER TO 62 FEET TO MAKE SPACE FOR THE TREES, CIRCULATION AND COMMUNITY SPACE

ROTATING THE MASS AT 4 POINTS TO INCREASE THE TOUCHING SURFACE AREA OF MAIN TOUCH DOWN POINTS AND CREATE CANTILVERED SPACE UNDERNEATH

## ABOUT THE PROJECT

THE MAIN AIM BEHIND OUR THOUGHT PROCESS IS TO MAKE OUR DESIGNED STRUCTURE TO BE PART OF THE NATURAL HABITAT WITH TREES AND PLANTS GROWING THROUGH IT IN SOME WAY, AS THE SITE ITSELF IS UNDER CONSERVATORY REGULATIONS. YET MAKING THE DESIGN TO POP UP IN THE EXISTING SURROUNDING THROUGH FORM, COLORS AND LIGHTING.

THE HIGHS AND LOWS IN THE STRUCTURE REPRESENTS THE SUCCESS STORY OF SILICON VALLEY. WHERE OVER TIME IT HAS BECOME A TECH HUB. WE WANTED A STRUCTURE THAT CAN ARCHITECTURALLY TAKE A TECH FUTURISTIC FORM AND BE A GIFT TO TECHNOLOGY.

THE DIFFERENT COLORS REPRESENT THE DIFFERENT ETHNICITIES THAT HAS EQUAL HARD WORK IN MAKING SILICON VALLEY WHAT IT IS NOW. JUST LIKE ALL THE PEOPLE WORKING TOGETHER TO ACHIEVE SOMETHING IN SILICON VALLEY, WE TRIED TO COMBINE DIFFERENT COLORS IN A WAY TO SHOW THE STRUCTURE AS ONE. WITH THIS THOUGHT WE ALSO WANTED TO DEVELOP AN EMOTIONAL ATTACHMENT WITH THE MONUMENT FOR THE PEOPLE OF SAN JOSE.

COMBINING THESE THOUGHTS IN MIND WE COME UP WITH THIS DESIGN AND BASED IT ON PRACTICAL GROUNDS.

## MODULE

REPLICATING PREFABRICATED MODULE

WILL BE BOLTED TOGETHER

KEEPING THE MODULE MOSTLY HOLLOW FROM CENTER TO ENCOURAGE TREE'S GROWTH THROUGH IT

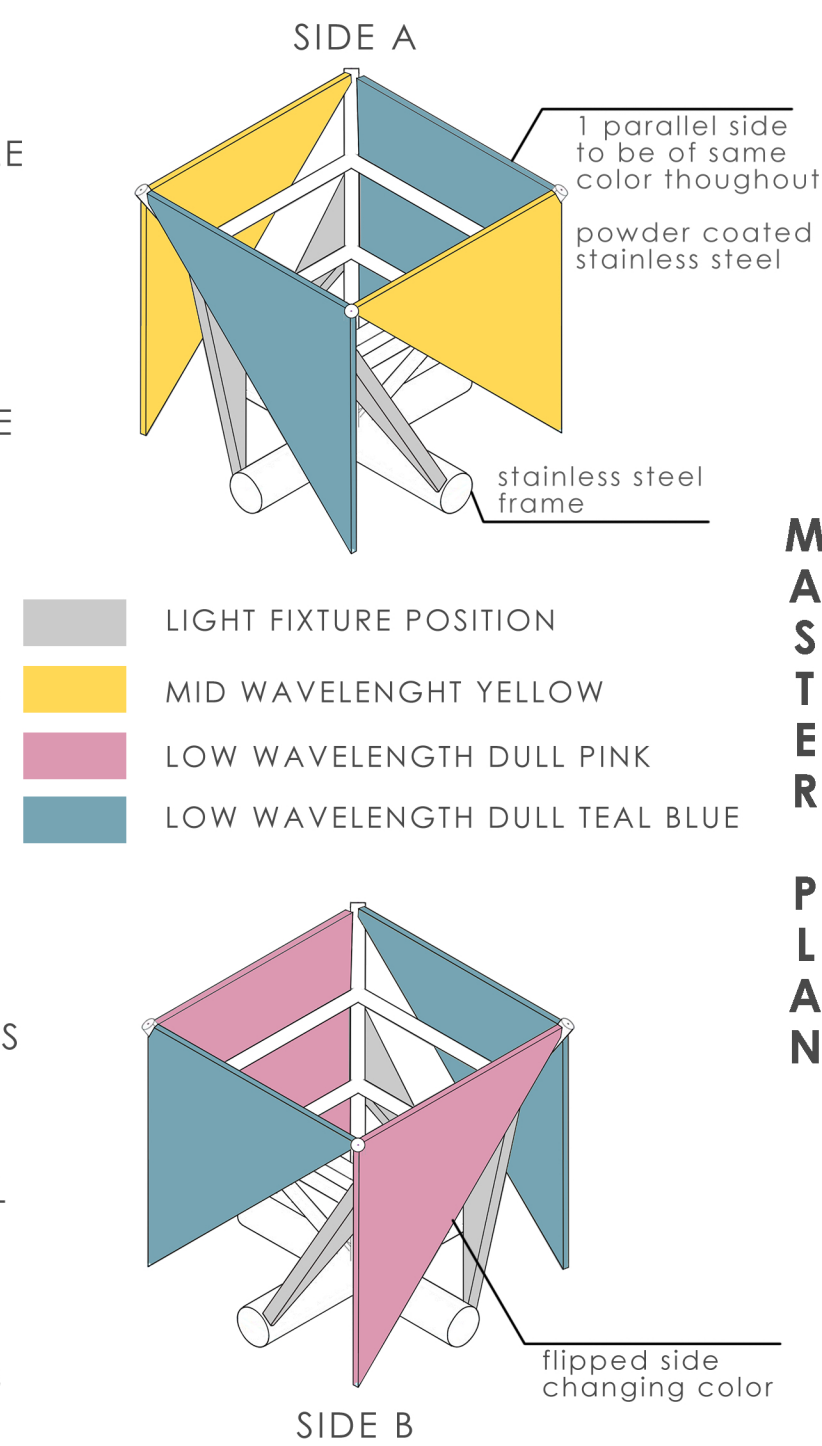
CHOOSING PREFABRICATED MODULE SO THAT NO NATURAL HABITAT IS DISRUPTED DURING THE PROCESS.

ASSEMBLING OF MODULE TO FORM THE MASS

PREFERABLE MID AND LOW WAVELENGTH COLORS TO NOT AFFECT THE MIGRATING BIRDS

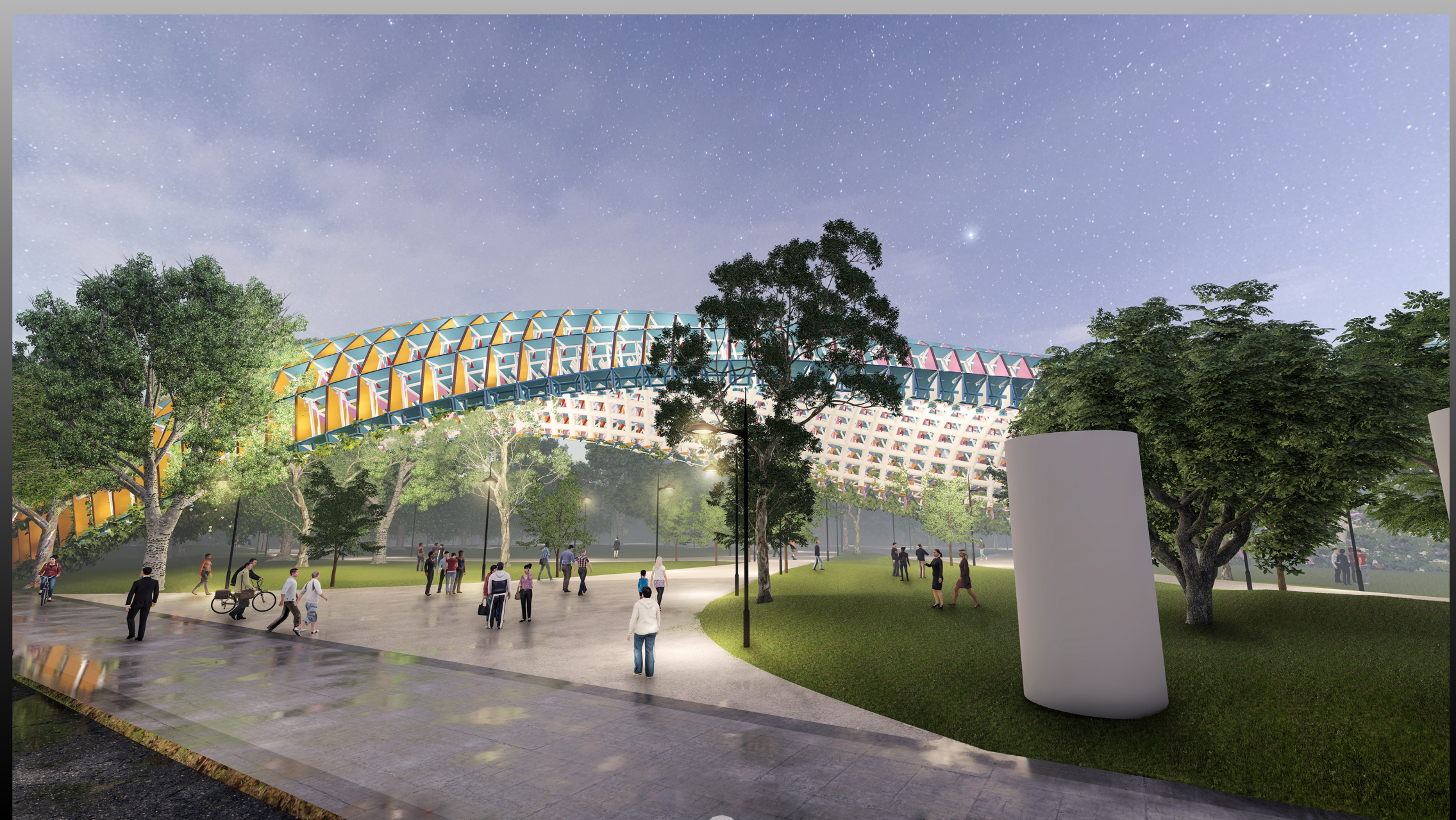
THE LIGHT FIXTURES WILL HAVE DIMABLE OPTION AND SOLAR POWERED

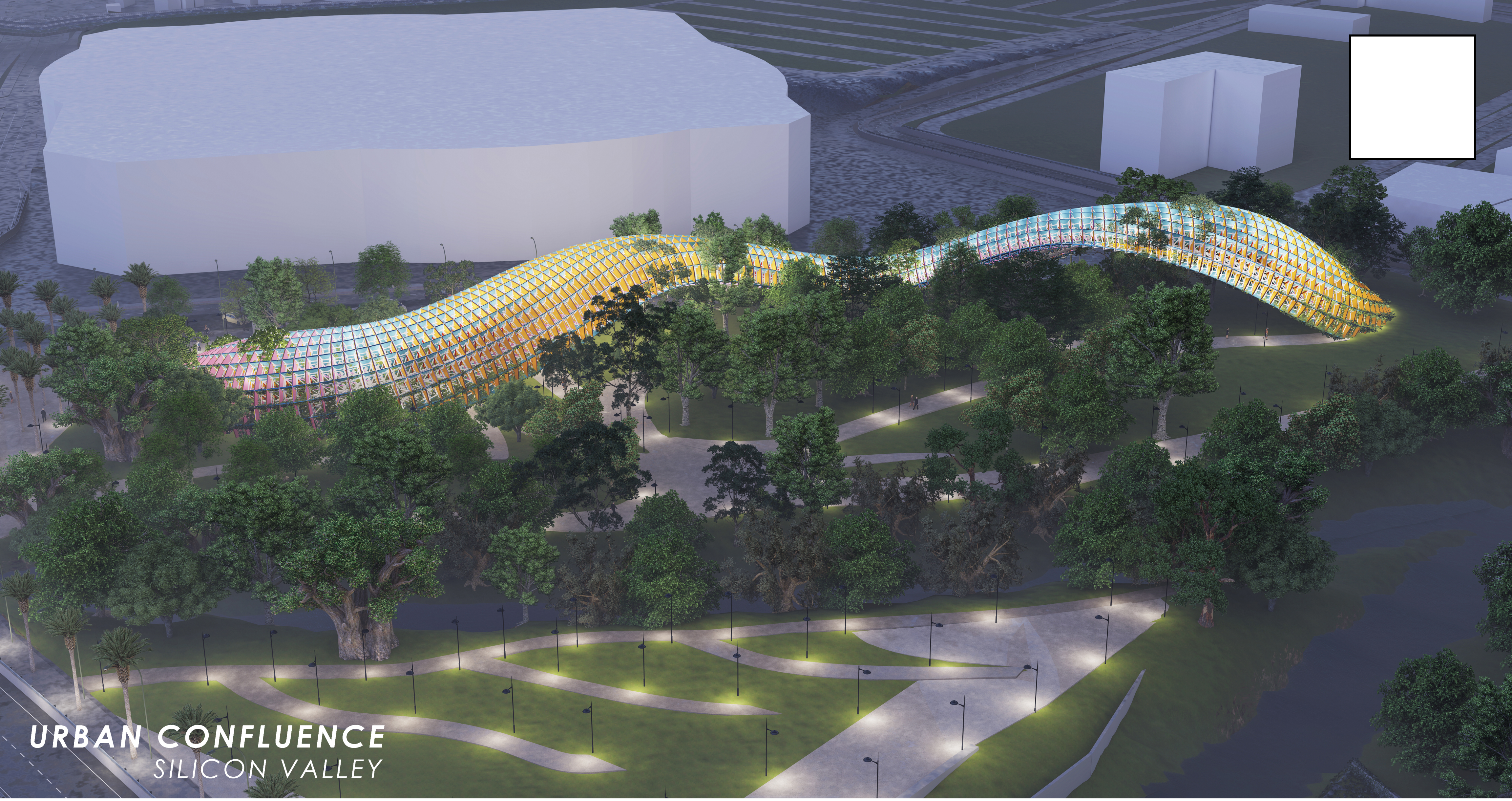
CHOOSING AMBIENT COLORS WITH LIGHTING TO MAKE STRUCTURE STAND OUT FROM DISTANCE



MASTER PLAN

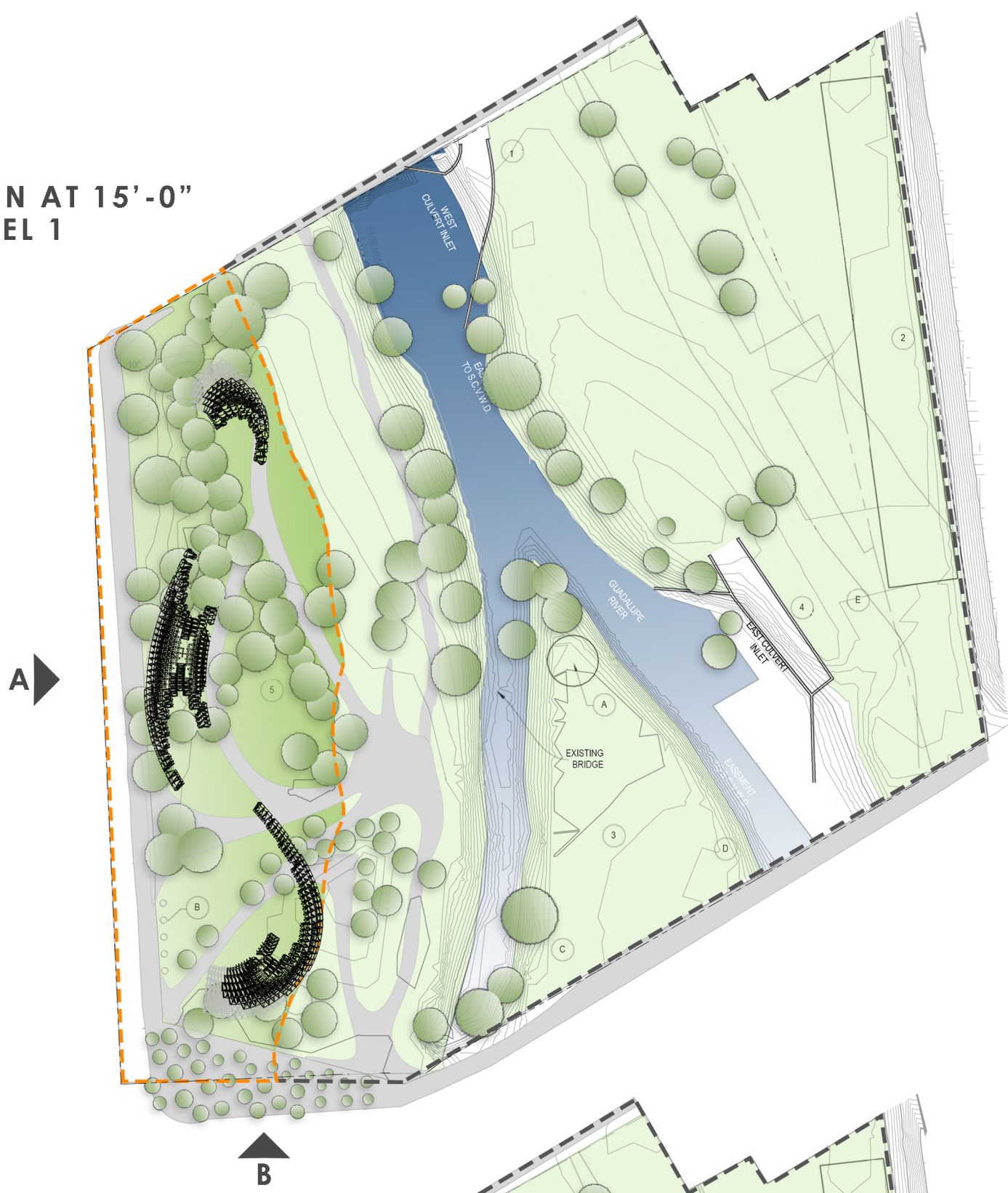
STRUCTURE DIMENSION  
166'x616'x62'



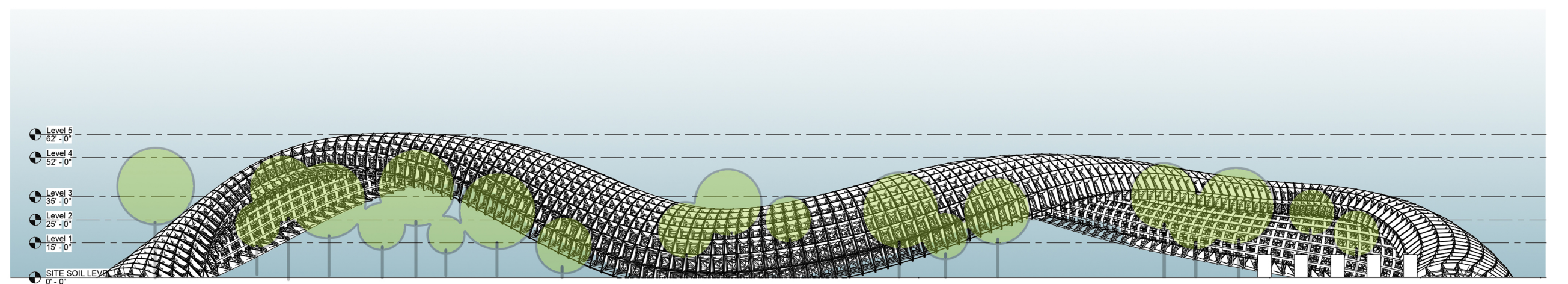


**URBAN CONFLUENCE**  
SILICON VALLEY

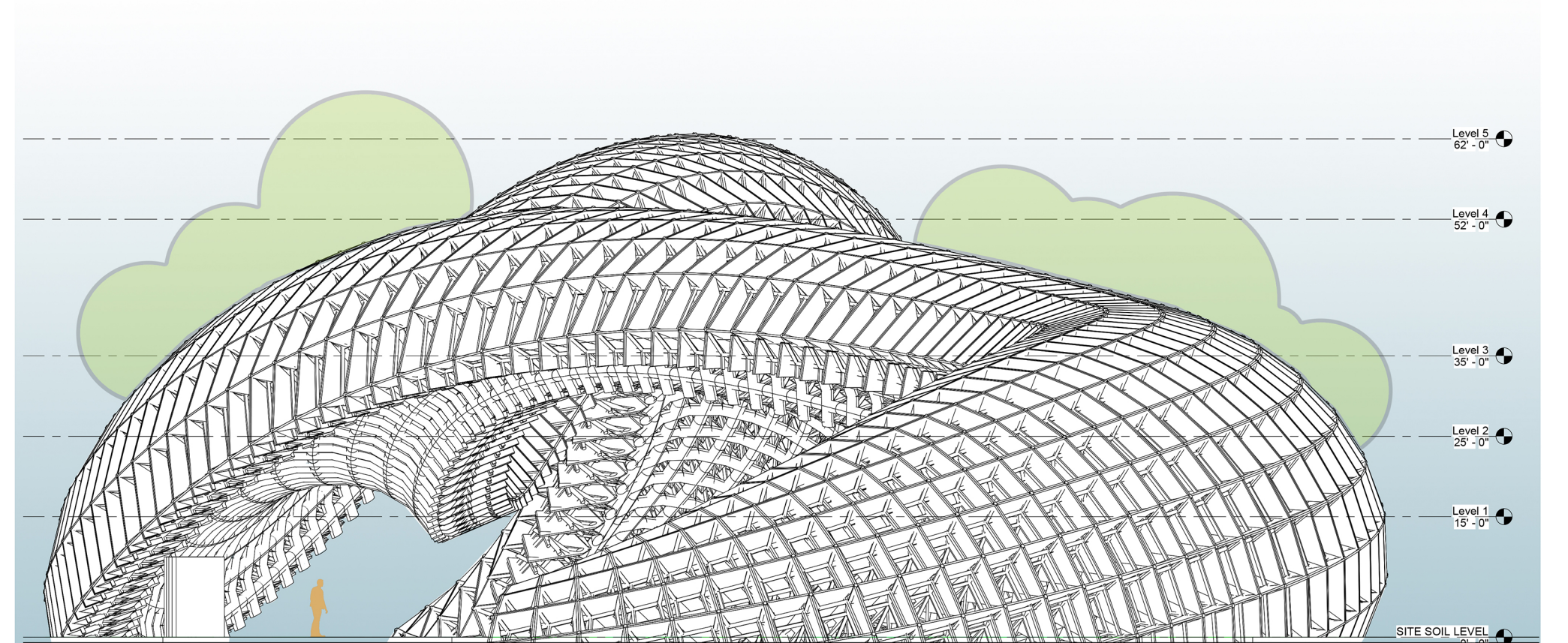
PLAN AT 15'-0"  
LEVEL 1



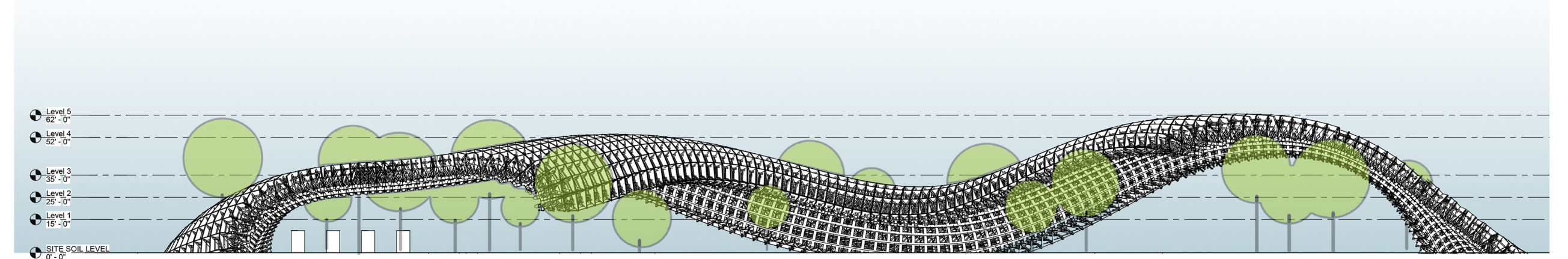
PLAN AT 25'-0"  
LEVEL 2



ELEVATION A



ELEVATION B



SECTION YY'

