



Perspective View of Arena Green



Perspective View from Highway 87

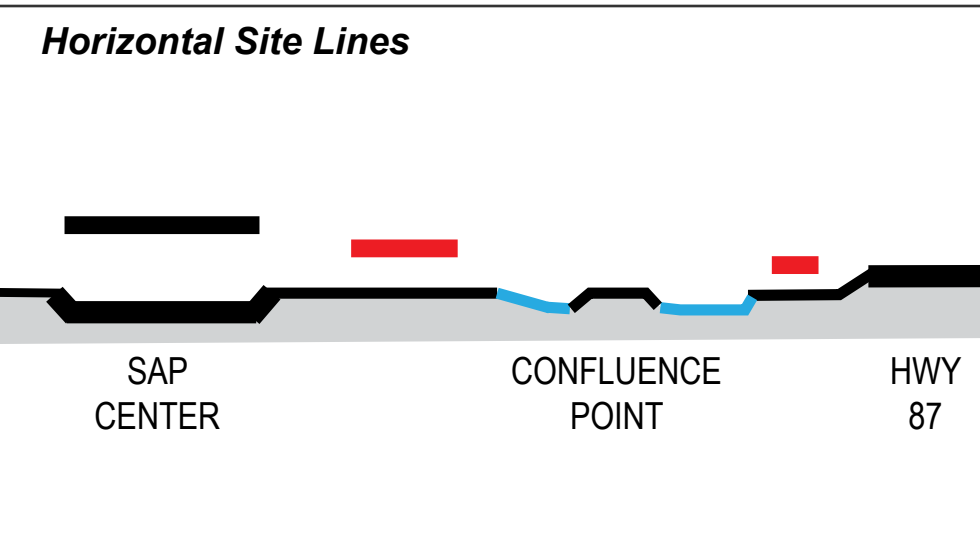
This competition calls for a transformative iconic structure in San Jose's Arena Green intended to be a symbol of Silicon Valley.

This design proposal provides two horizontal structural interventions:

- a Canopy Pavilion in Arena Green West; and,
- a Canopy Structure at Arena Green East.

It is informed by the surrounding natural and urban environment and provides spatial definition. The height of the structure varies to support the varied park programs and amenities.

SITE DESIGN DIAGRAMS

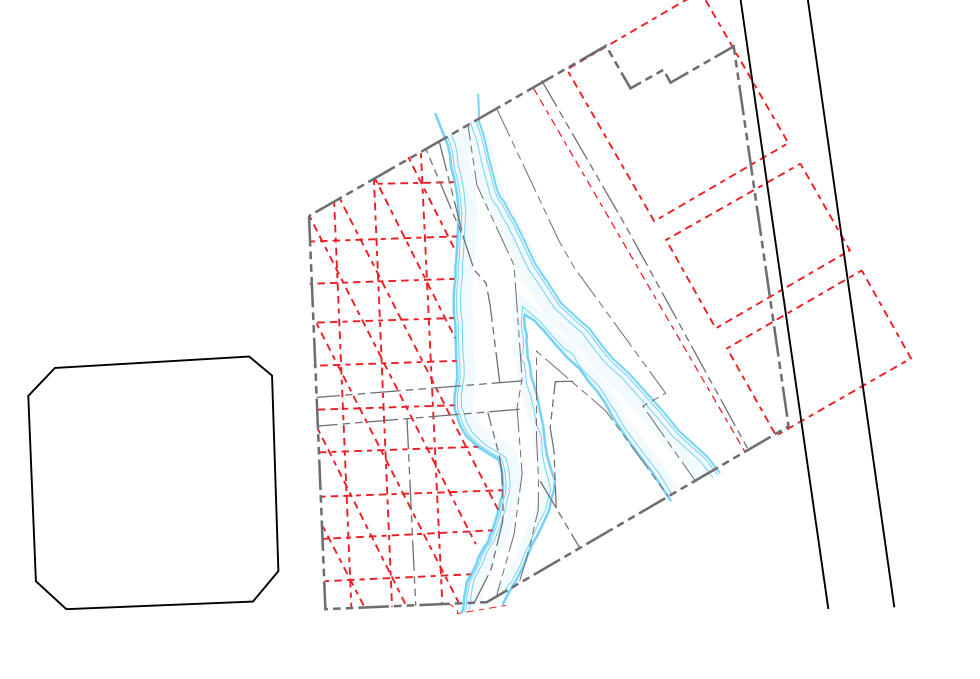


Regulating Site Lines

From the 1884 Sanborn Maps (image below), the Arena Green site was historically identified with numbers along the street around the site boundary.

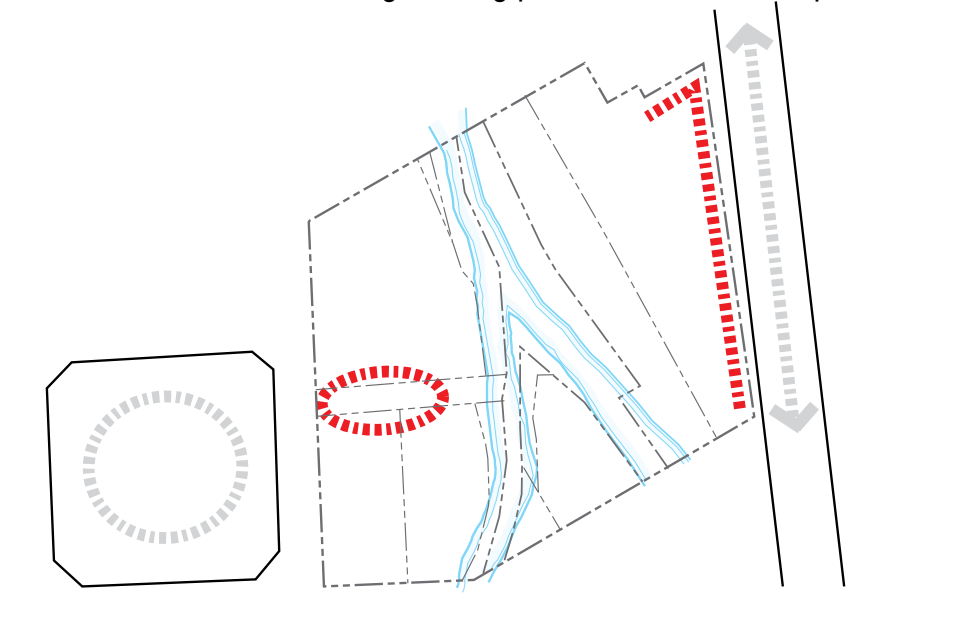


Bisecting lines are created from this numbering and informs the proposed site layout in Arena Green West and as three separate areas in Arena Green East.



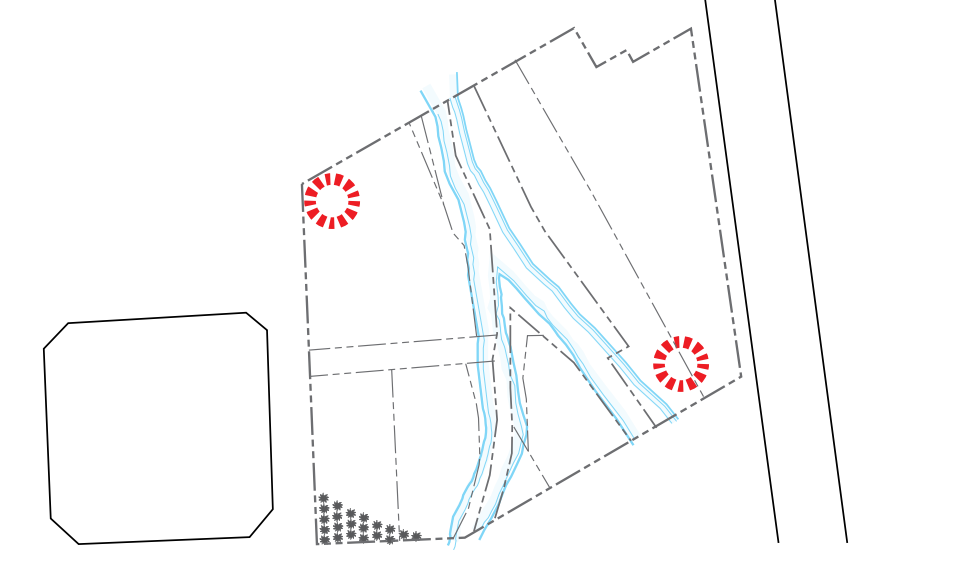
Organizing Design Features

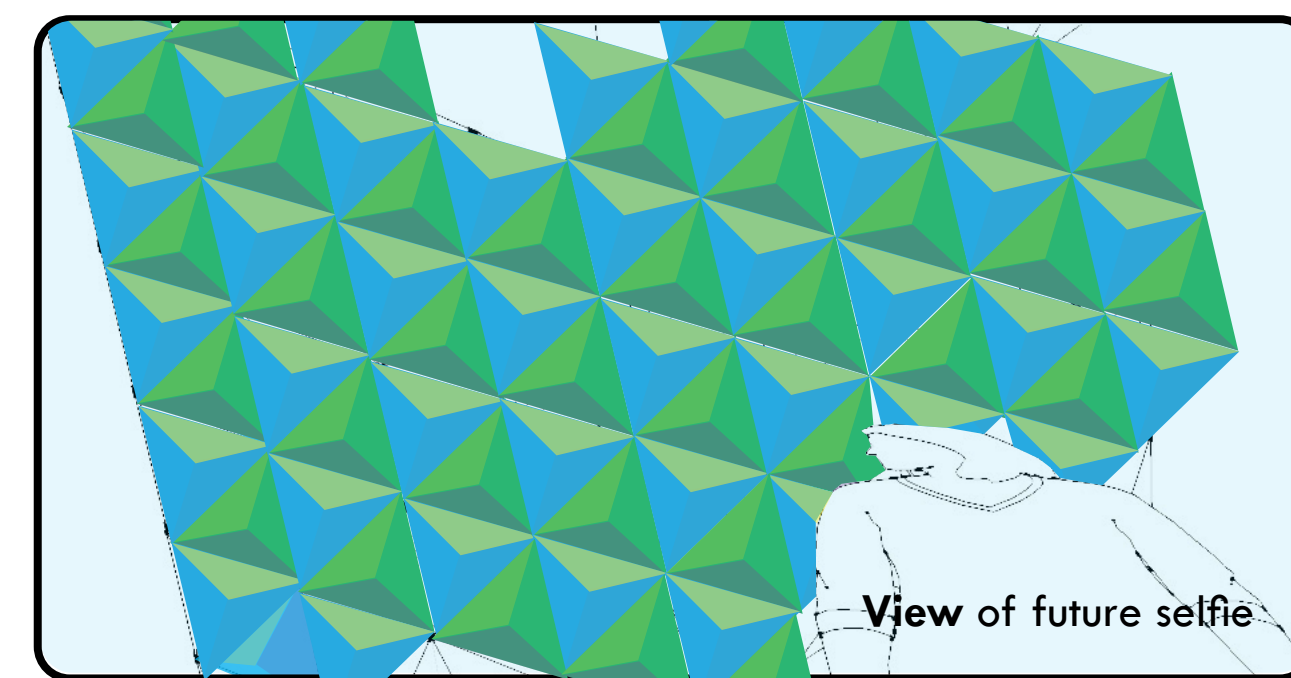
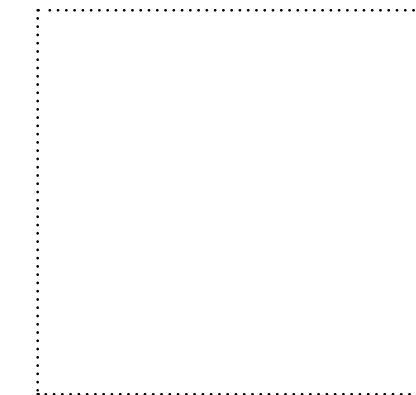
The Canopy Pavilion defines a large open space and is a focal point for Arena Green West. At Arena Green East, the Canopy Structure creates smaller gathering places to activate the park.



Entry Gateways

Canopy gateways and kiosks are located at existing entry pathways to the park; the existing group of palm trees defines the entry near SAP Center.

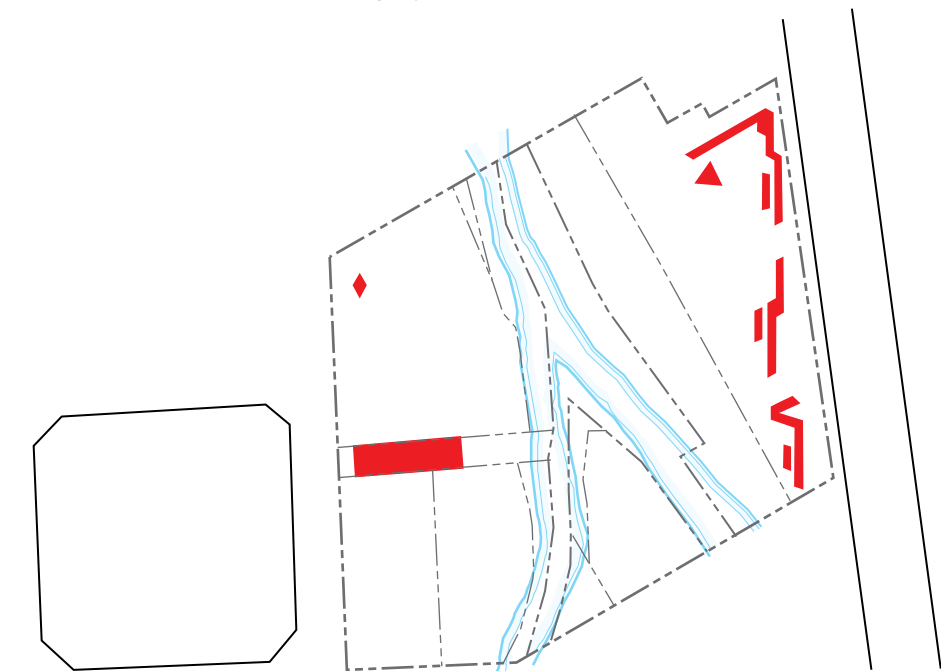




INFRASTRUCTURE DIAGRAMS

Surface Area of Project Intervention

The roof top surfaces of the canopy structure may be used for renewable solar products. Additionally the interstitial space within the structure can house supporting systems.



Site Solar Capacity

Solar panels on top of canopy structure can roughly provide energy for 10-12 homes (at 900kW/month)



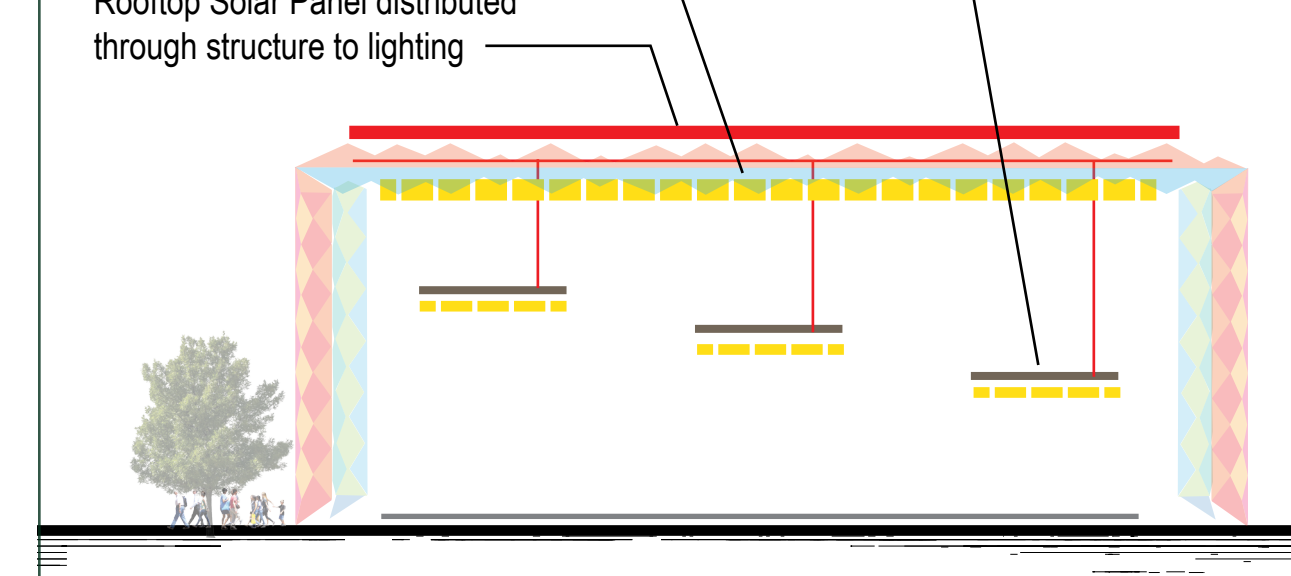
assumes 1/3 of canopy top is available for panels

Lighting Strategy

Focused lighting on hydraulic lifts to coordinate with events

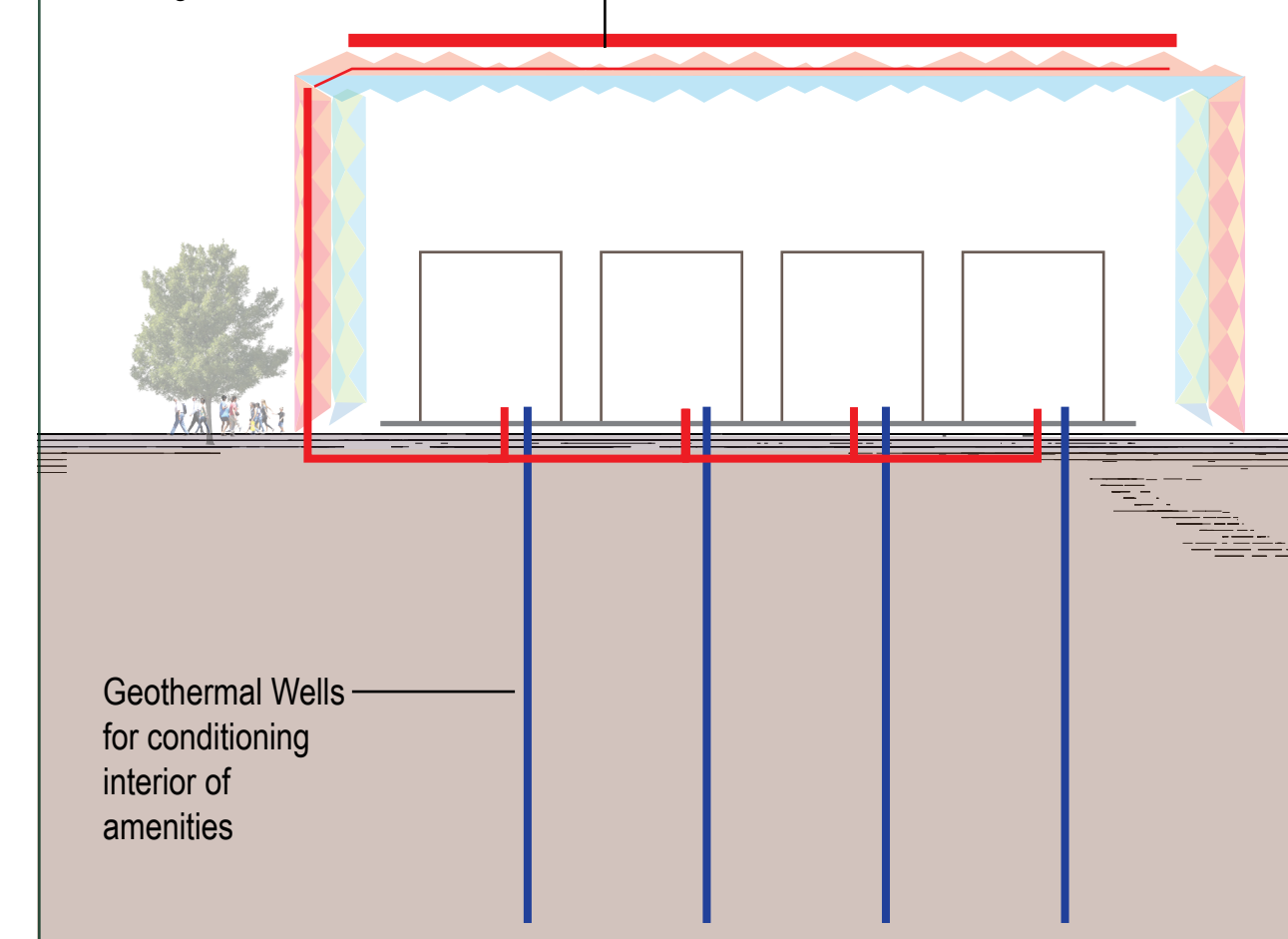
General down lights in canopy

Rooftop Solar Panel distributed through structure to lighting



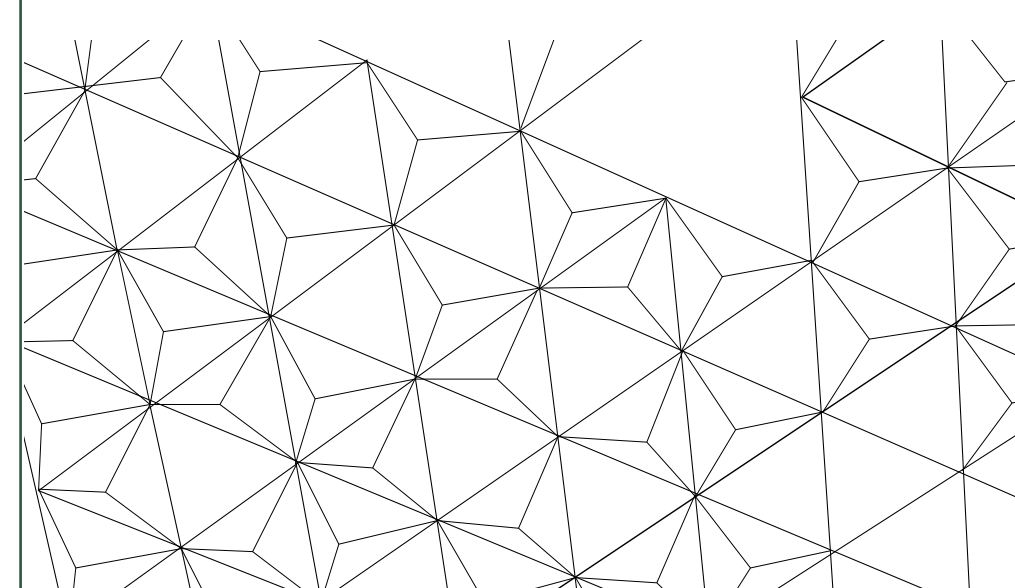
Renewable Energy Strategy

Rooftop Solar Panel distributed through structure to amenities



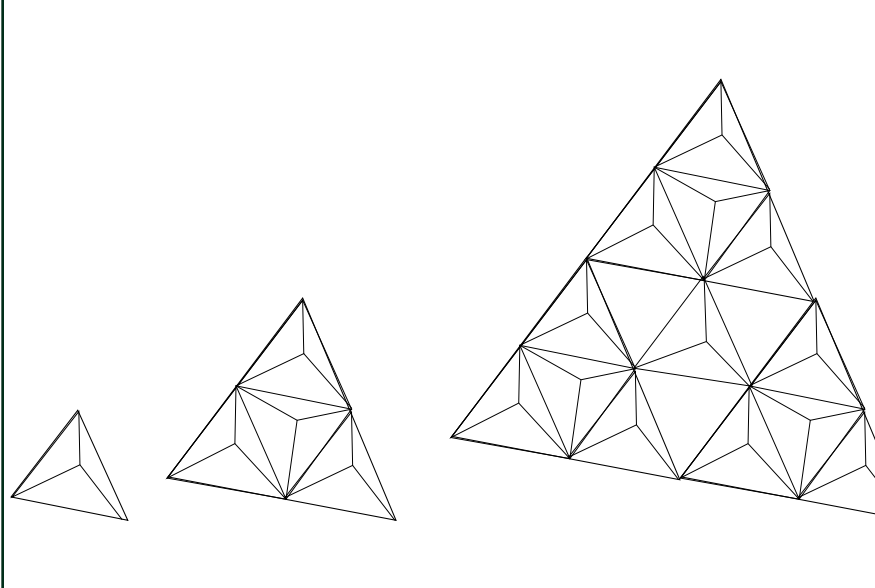
Triangular Form

The structure of triangular system of overhead canopy or frame and vertical supports. The form is a metaphor to technology, connectivity and network.



Modulars and Scale

The framing system is modular and can be added on to or deducted. Also the scale of modular depends on its use.



Color Strategy

The structure is multi-color. The interior is green-blue to blend with the park; the exterior is red-orange to contrast and stand out.

