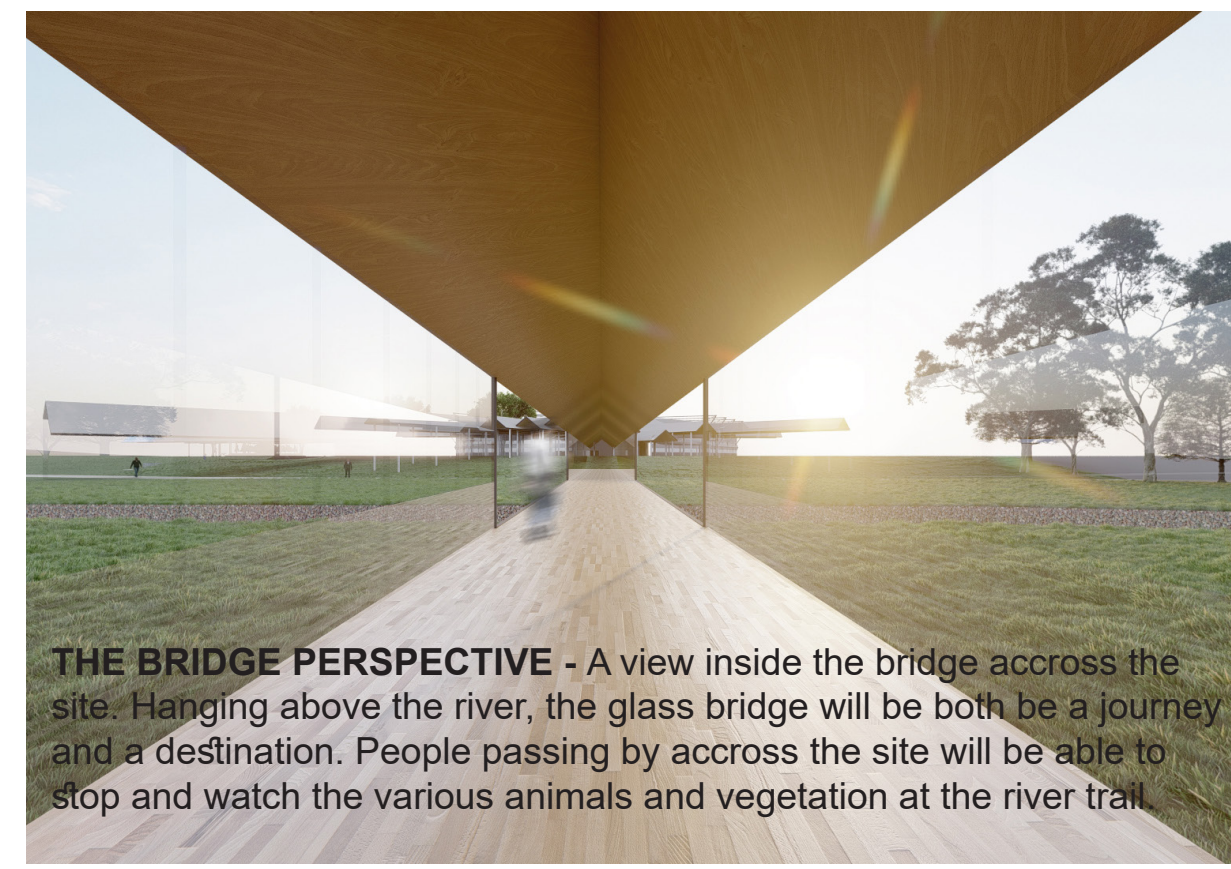
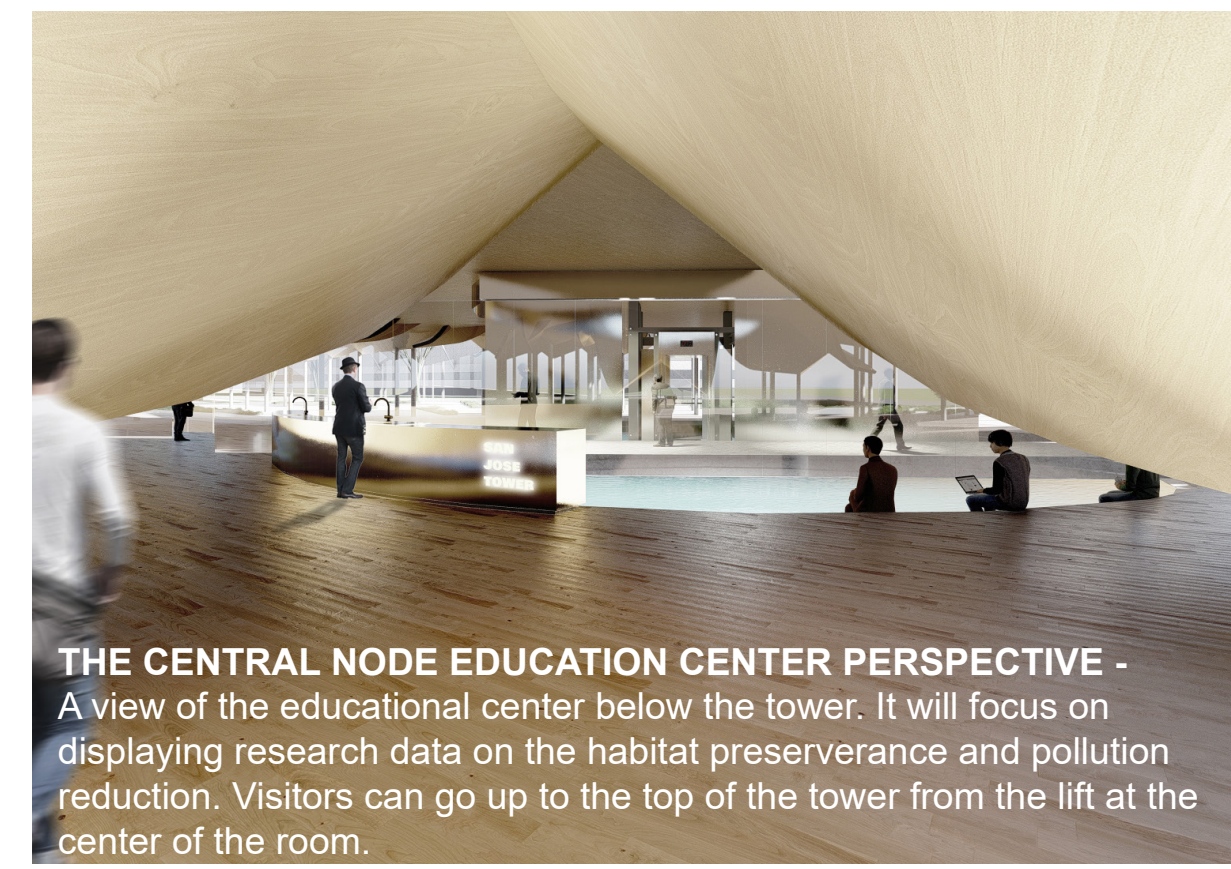




**MAIN AMPHITHEATRE PERSPECTIVE** - One of the openings at the ground floor creates an open amphitheatre facing right to the Guadalupe River. A bridge to the East side of the park can be accessed from the central node of the towers, seen on the right of the image.



**THE BRIDGE PERSPECTIVE** - A view inside the bridge across the site. Hanging above the river, the glass bridge will be both be a journey and a destination. People passing by across the site will be able to stop and watch the various animals and vegetation at the river trail.



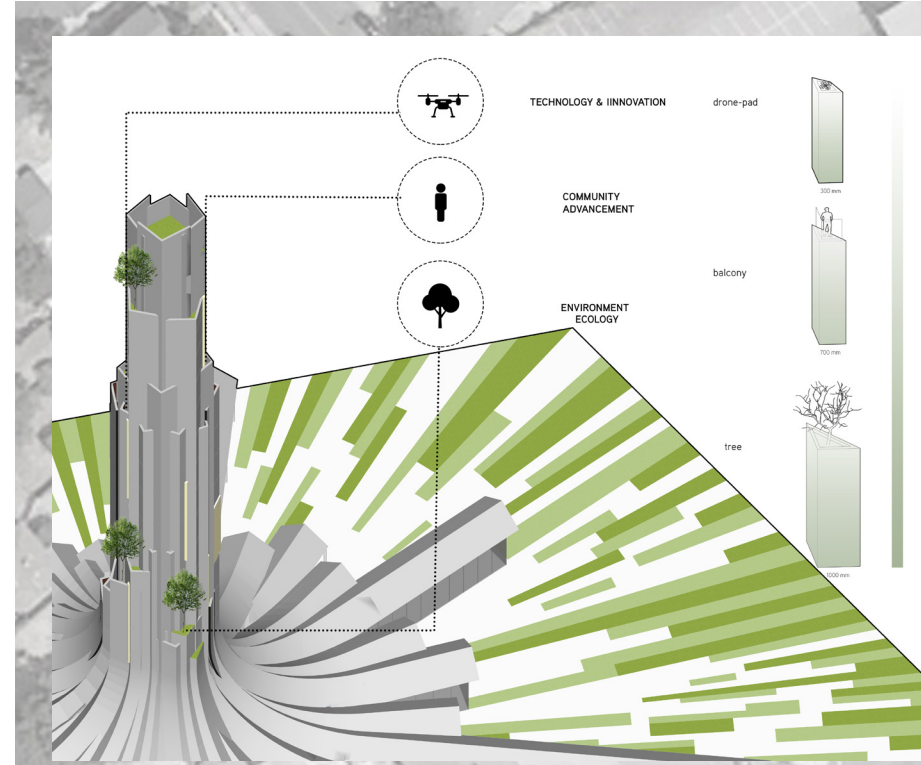
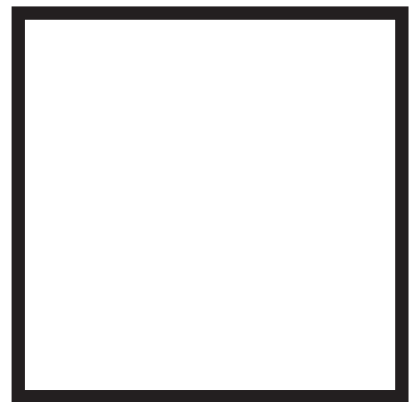
**THE CENTRAL NODE EDUCATION CENTER PERSPECTIVE** - A view of the educational center below the tower. It will focus on displaying research data on the habitat preservation and pollution reduction. Visitors can go up to the top of the tower from the lift at the center of the room.



**SUNKEN PUBLIC ART GALLERY PERSPECTIVE** - Opposite the tower, a sunken gallery is created at the eye level of the river. This gallery will create a new viewing perspective of the tower, where we can clearly see how the tower connects back to the ground from the level below.



**SUNKEN PUBLIC ART GALLERY PERSPECTIVE** - In front of the sunken gallery, a continuous pedestrian and cyclist access is available to use, creating a loop from the tower side to the Eastern side of the site. The lush greeneries connect back to the environment.



**SUSTAINABILITY - LANDING SPACE**  
The pitch roofs transforms into the main tower cladding. Through the use of different pitch roof sizes, various triangular balconies are created around the circumference of the tower. These balconies are used in several ways, the biggest transformed into tree planters while the smaller ones will become a landing space for the drones. The other balconies can also be accessed as a viewing pods by visitors.

The drones has a multitude of tasks to maintain the environment. It will be used to measure pollution level and display it on the tower LEDs on daily basis. Other than that, it will also be used as an automated plants watering device. This will further connect technology back to the environment.

**LEGEND**

- 1. Carousel
- 2. Weavers Gift
- 3. Five Skaters
- 4. Ranger Station
- 5. Vietnam Veteran War Monument
- 6. Bridge
- 7. Main Tower
- 8. Amphitheatre
- 9. SAP Center
- 10. Public Art Gallery



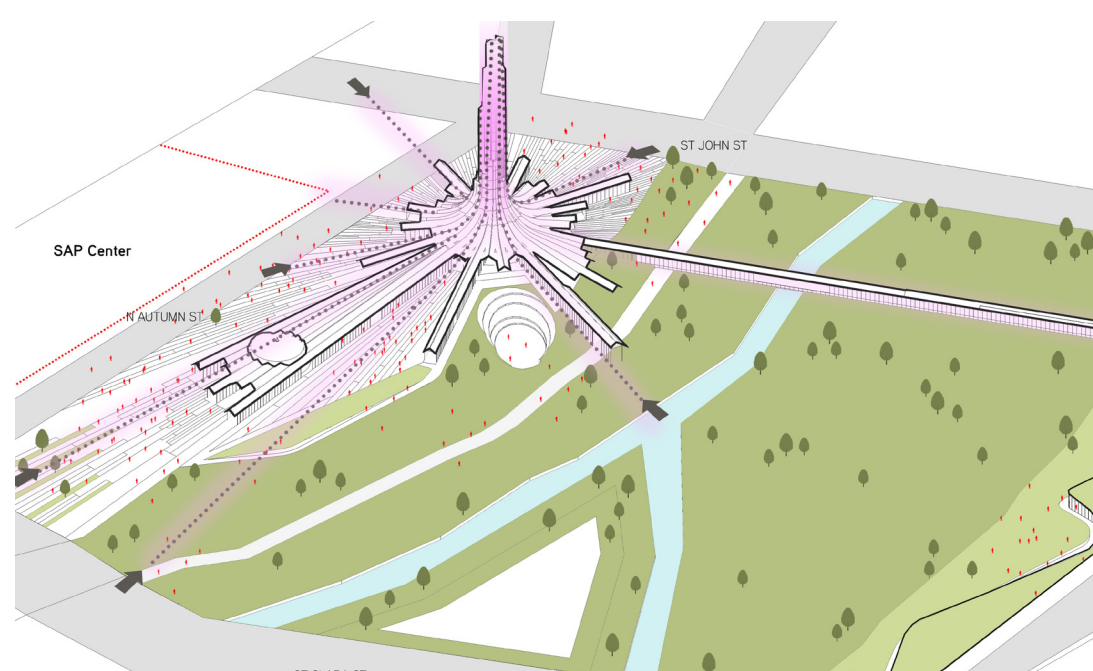
# URBAN CONFLUENCE NEW SAN JOSE LIGHT TOWER

A Celebration of Technology, Sustainability, and Community

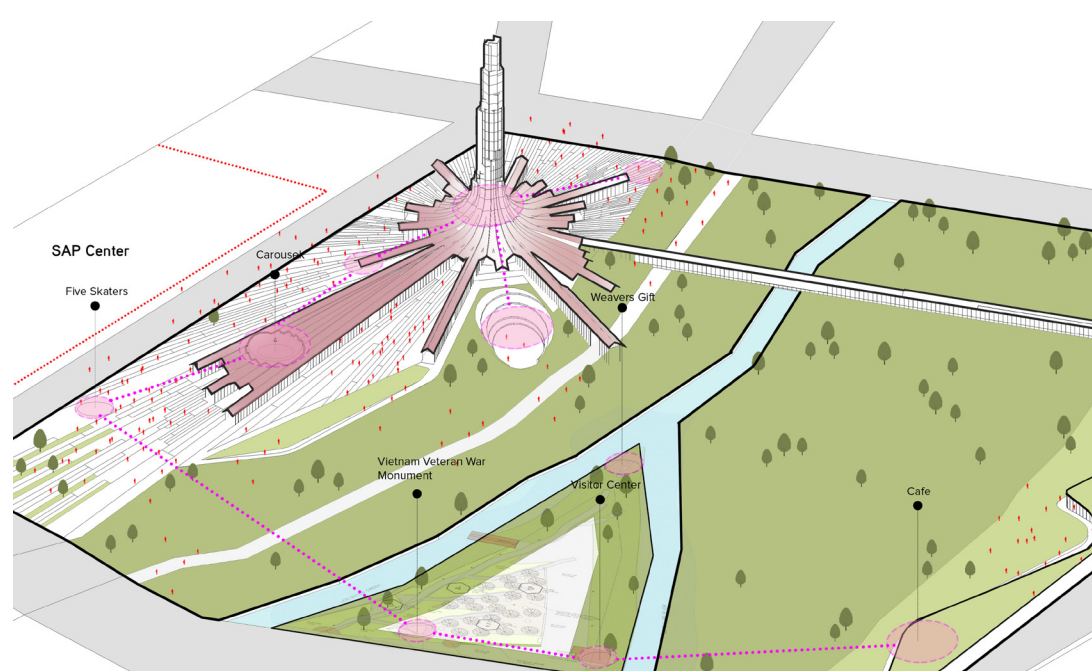
As we move further to the future at a far more rapid pace, a new way of thinking about a public space also needs to be transformed. The New light tower should not just be a symbolic tower, but needs to be prototype of a building of the future.

While being at a confluence, the tower takes the simple form of several pitch roofs structure, unified at one nodes of the park. The roofs brings together a host of retail, entertainment, and also educational programs. Underneath the roofs, communities are brought together as one. At the center of the tower, before entering the elevator up, the visitors will be able to learn more about the local vegetation and animals in the habitat and help raise awareness on its conservation. It will signify the importance of human connection to the environment, that in order to enjoy the spectacles at the top, we really need to take care of the habitat below.

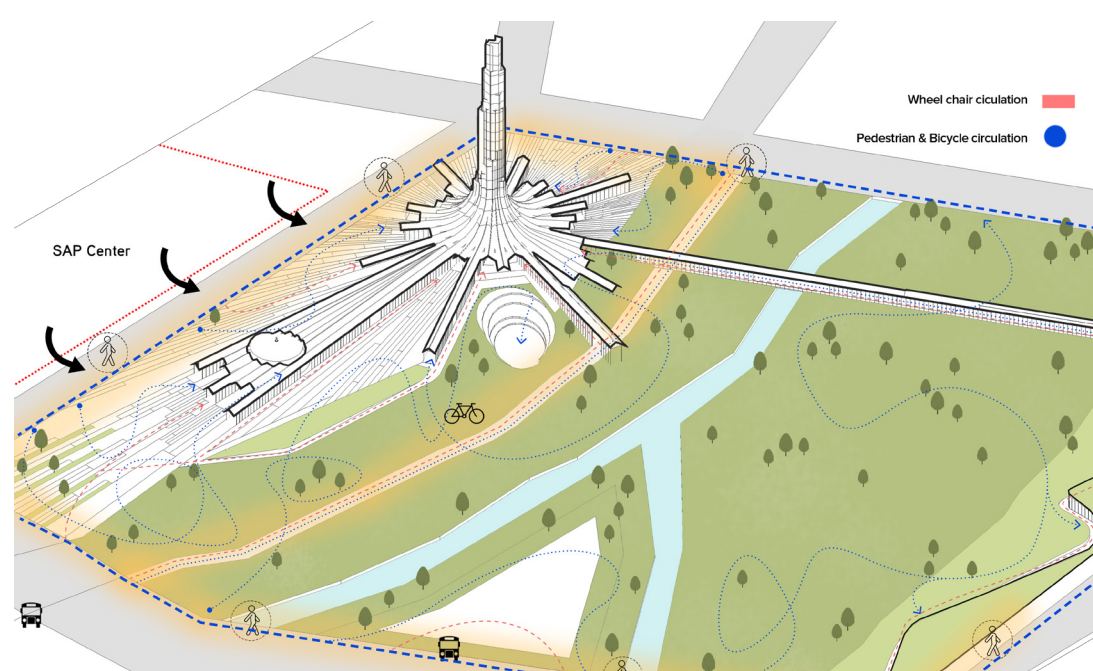
The San Jose New Light Tower is a symbol of the unification of technology, environment, and human being.



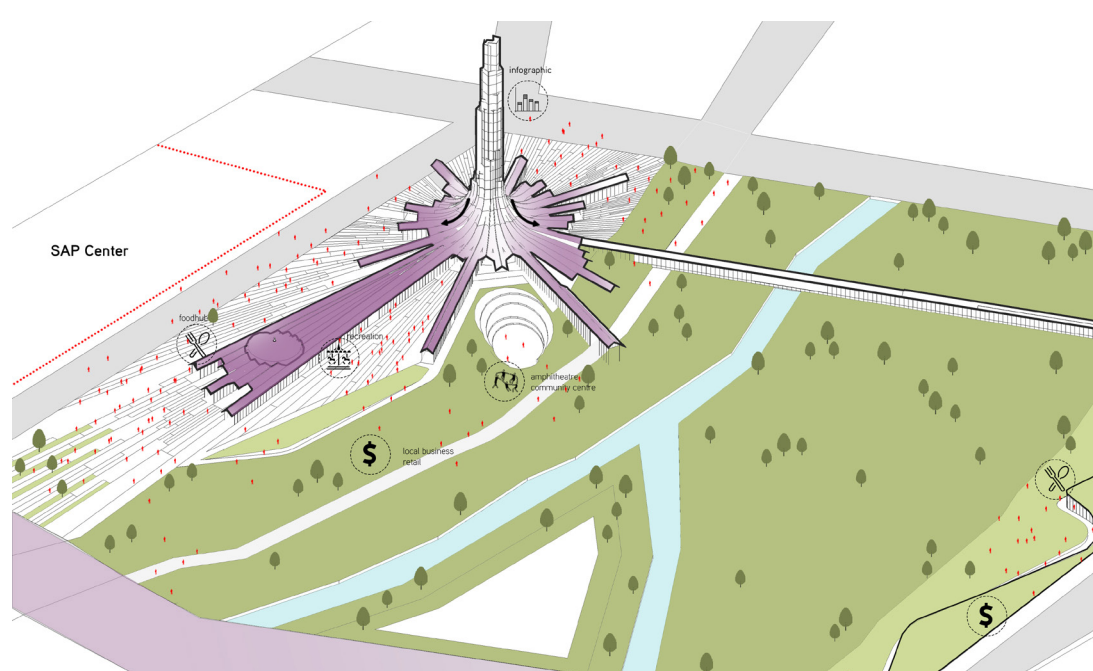
**MAIN AXIS**  
The new light tower is located at a central node of the site, with several axis taken from different point of entrance and exit of the site. While also taking into accounts the axis of views (vistas) around the area.



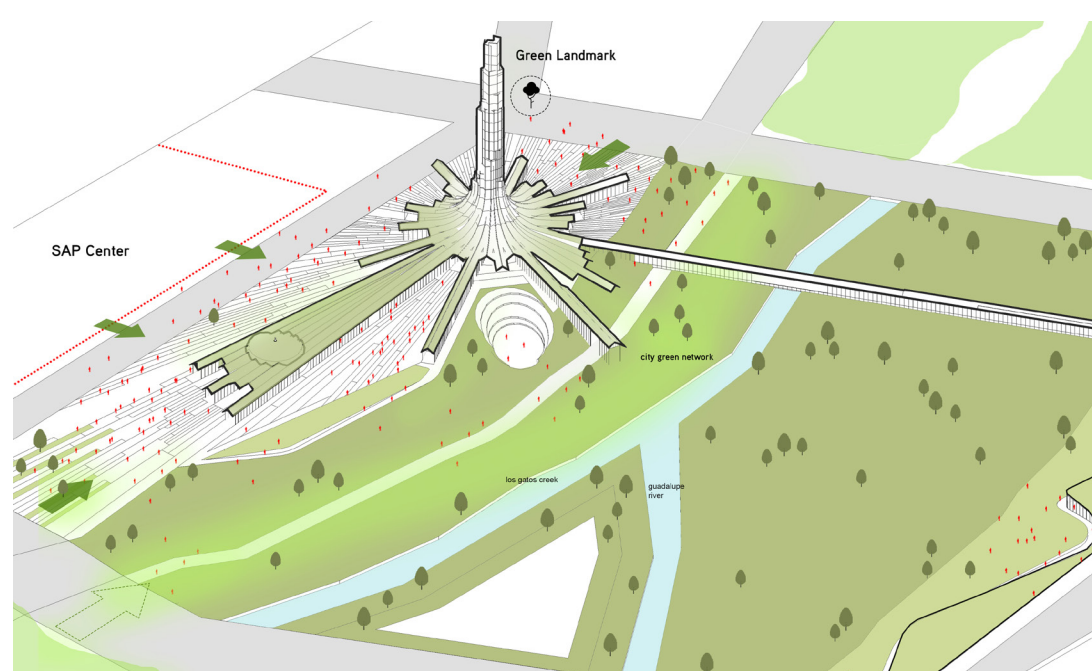
**CONNECTIVITY**  
Each pitch roofs signified an axis of the site, it also creates a looping physical and visual connectivity around the site. Visitors can easily access all existing and new areas around the precinct.



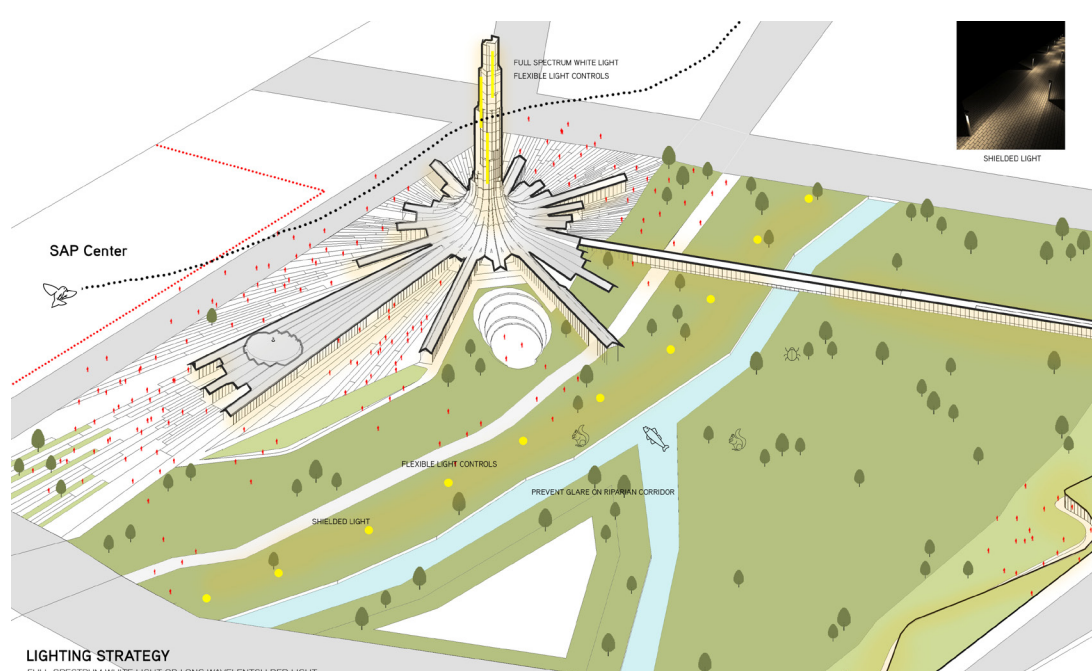
**CIRCULATION**  
The western side of the site, from the SAP Center, is fully opened to the public to absorb the amount of crowds on game day. Other than that, pedestrian and wheelchair access around the area is assisted by the new bridge, while maintaining connection to the public transports.



**ZONING**  
The unified roofs below the tower become a virtual barrier of different programs around the main court. With programs such as retails, food center, and public performance area being tucked in between the different size of roofs, hiding and revealing it from the public to discover.

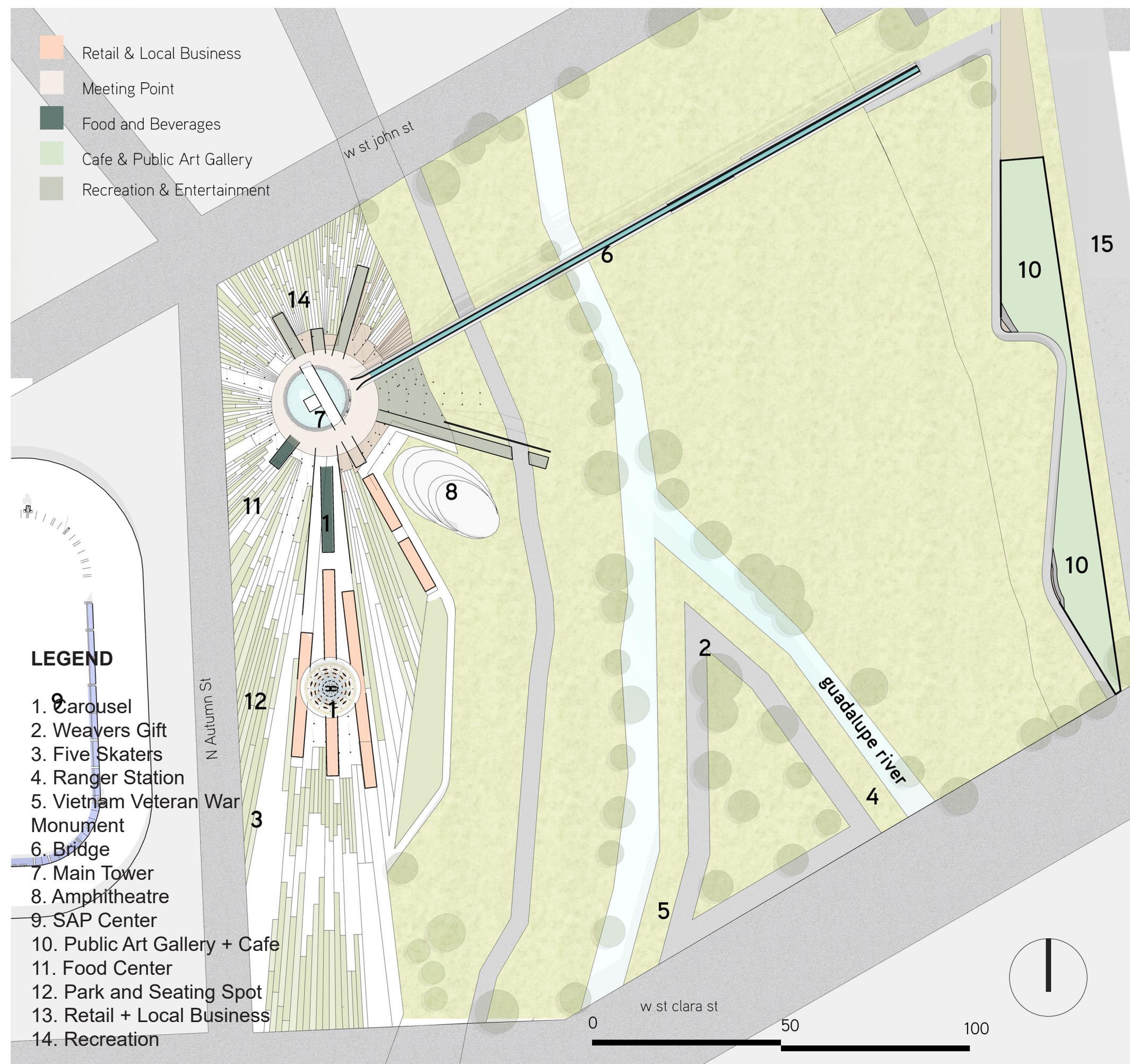


**LANDSCAPE STRATEGY**  
The green area around the Los Gatos creek is maintained to its existing condition, preserving the green network, a new network is introduced at the main courtyard, where a combination of hard and soft scape create a circular green network around the site.



**LIGHTING STRATEGY**  
The use of shielded full spectrum white lighting around the area and on top of the tower helps control the environment from the artificial lighting and human activities around the site. It will also become a guiding light for the drones to roam around safely and return to the tower.

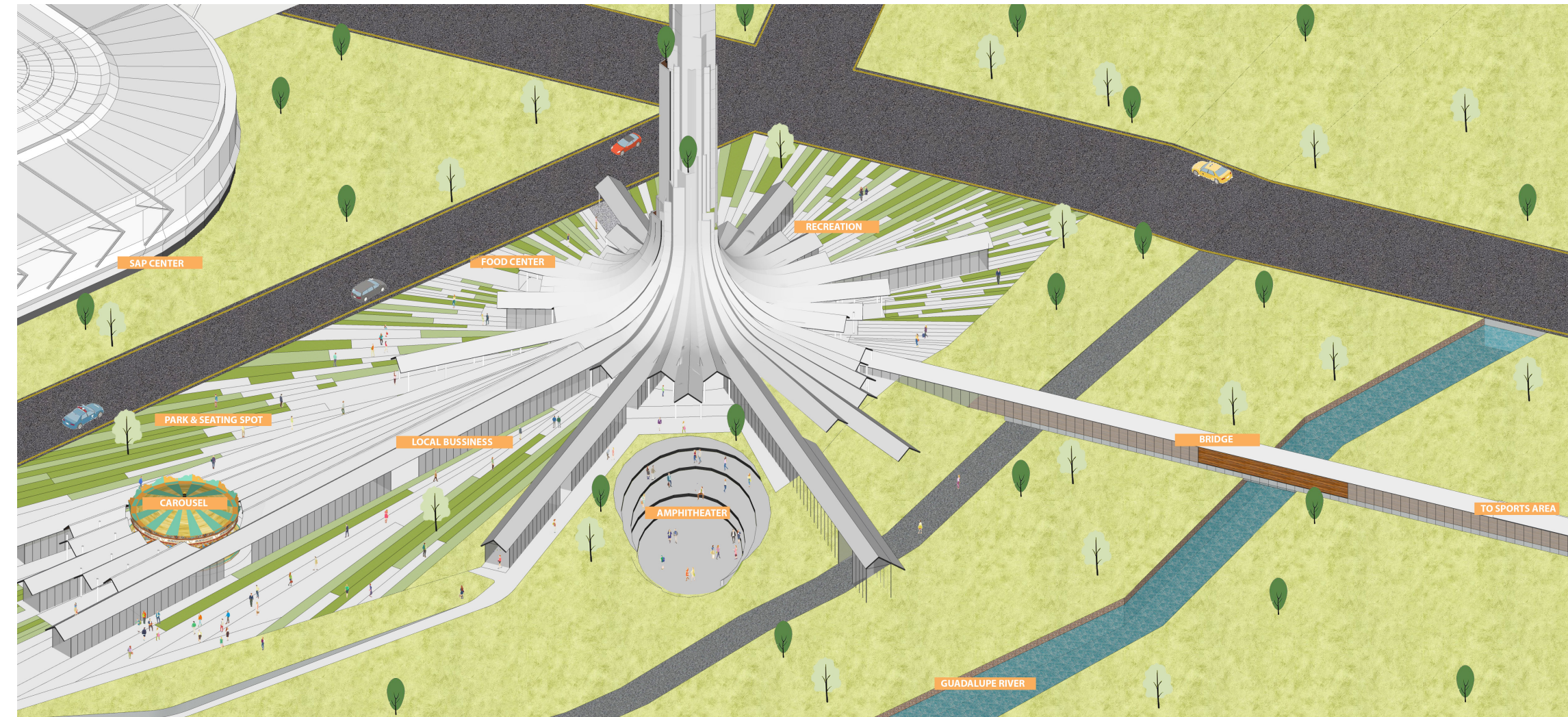




**THE 'SMART' COURTYARD**

The form of the tower and the ground floor roofs dictates the shape of the courtyards. While being open to the edges of the site, the courtyard is formed through the combination of landscape and hardscape 'planks' revolving around the central axis of the tower. The combination between the two creates an enjoyable walking condition for pedestrian and cyclist. The landscape around this area will also be used as a herb and smaller plants garden. This will be a contrast to the larger park on the east side, that will mostly be kept to its existing condition. The courtyard also hosts different seating area with different views ( to the river and the park ) that will support the local business retail and F&B area, while also becoming an open public discussion and performance area. It also connects back to a continuous jogging and cycling track that creates a loop around the park.

The courtyard will be a new and iconic destination for families and communities, where outdoor activities are encouraged and where there is a seamless connection between technology and the environment.



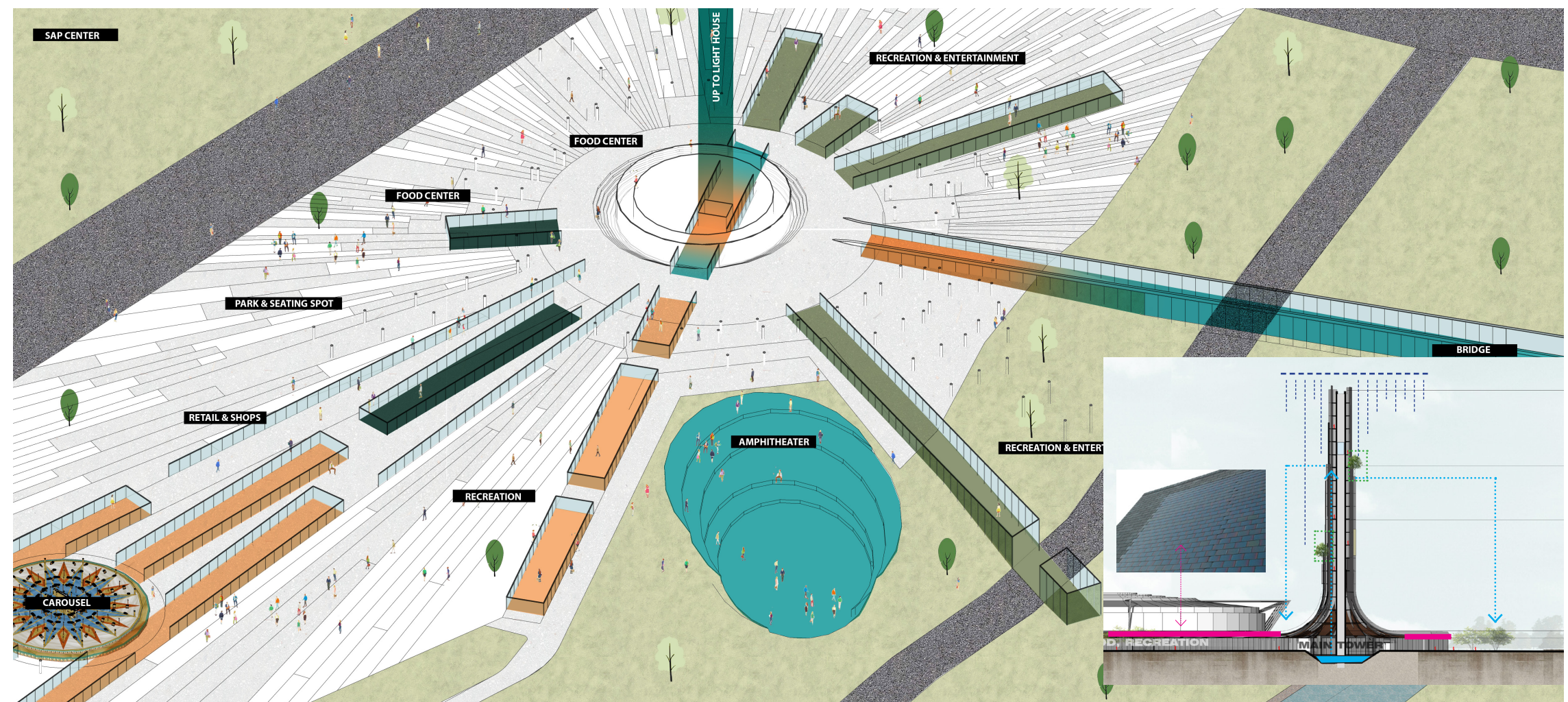
**NIGHT VIEW PERSPECTIVE** - At night underneath the roof, a host of different retail and entertainment programs are available. The carousel is preserved and will instead become the main attraction, being surrounded by open pitch roofs that will cover the retail and open communal programs. Looking at the top, a host of LED screen illuminates to show pollution levels and also to display the latest news around the country. The roofs also help shield lights from the retail area, as on the tower there will only be uplighting to not disrupt the diversity of the habitat.



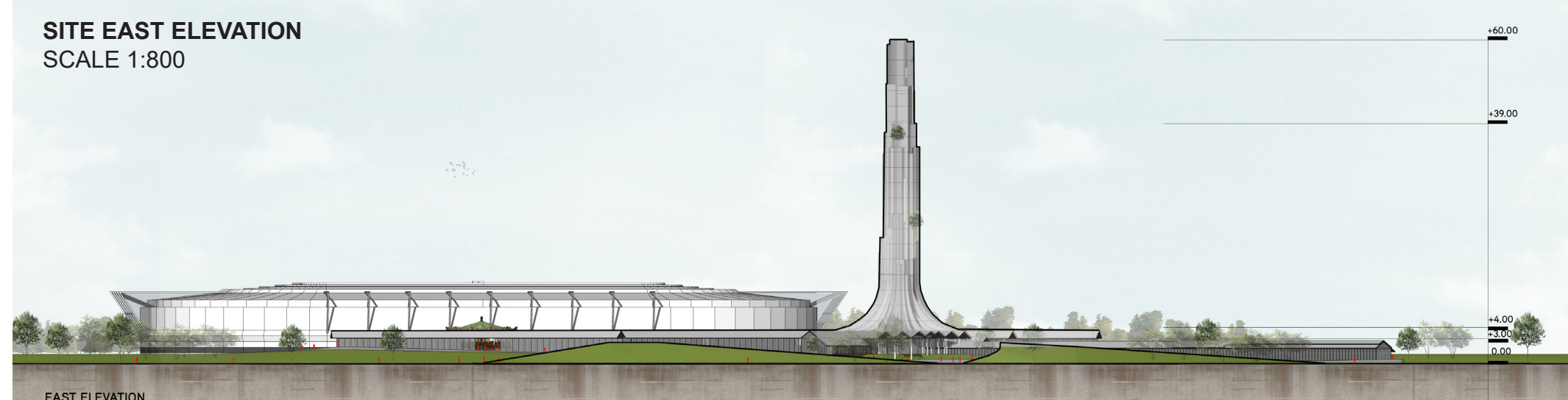
**NET-ZERO ENERGY**

As a prototype of future urban living, The San Jose New Light Tower will put its focus into being a sustainable, net-zero public area. The tower, through its unique form collects rainwater to be redistributed to the vegetation. Rather than creating an old-school piping system, the introduction of drones as watering device will further help create a more efficient way toward becoming net zero.

The reflective roof material is also integrated with the innovative solar panel tiles to help keep energy for daily lightings of the area. The design of the landscape, where some parts are elevated from the current level, also helps reduce the noise level from the traffic and also to the river side, where natural inhabitants reside. Furthermore, the light tower is also integrated with outdoor activities, minimizing the use of air conditioning on the inside. The AC system is integrated through a raised floor system, that helps energy efficiency around the precinct.



**RIVER EDGE PERSPECTIVE** - From the river edge, the tower can be seen as being rooted back to the ground. The mirrored aluminium material reflects back the colour of the sky, as the tower 'disappears' from its surrounding. Rather than being obstructive to the city skylight, the Light Tower will be a subtle but iconic addition.



**THE TOWER**  
The Tower stands at 196 feet, with its cascading form revealing balconies for plants, viewing pods, and drone landing ports. The tower is made from timber structure with mirrored aluminium cladding, the cascading tower morphed into several pitch roof structures that will host different programs at the ground floor. One of the 'roof' also morphed into a glass bridge, going across the site over the Guadalupe river. The space below the roofs range from open communal space to enclosed retail area and also restaurants and cafes. This way, the tower become a one continuous structure that will cover the entirety of the site.

**MATERIALITY**  
The main timber structure will be locally sourced, whilst the aluminum cladding is chosen as it has a longer lifetime, and it also suits the site better than other materials. The mirrored effect give the tower a sense of 'invisibility' at day time, whilst being able to enhance the light at night. All lighting materials are chosen according to the guidelines, with shielded landscape lightings chosen. The tower itself will only install uplighting fixture, as the LED screen will also be controlled as to not obstruct the habitat.