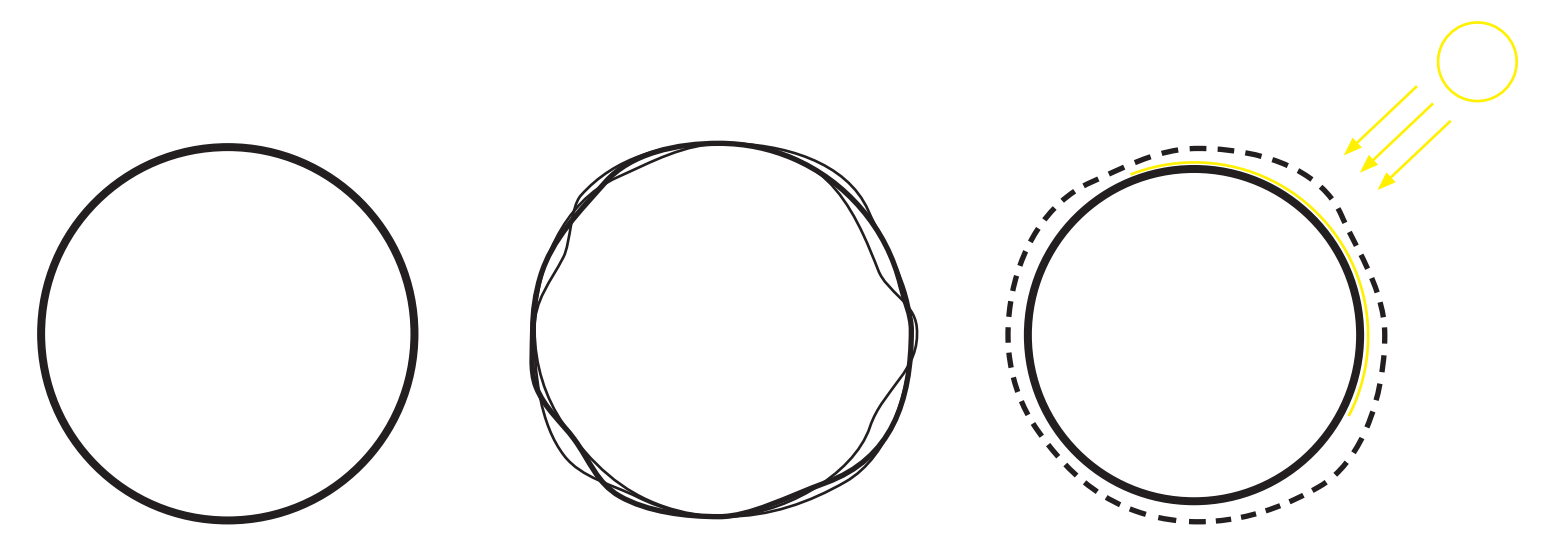
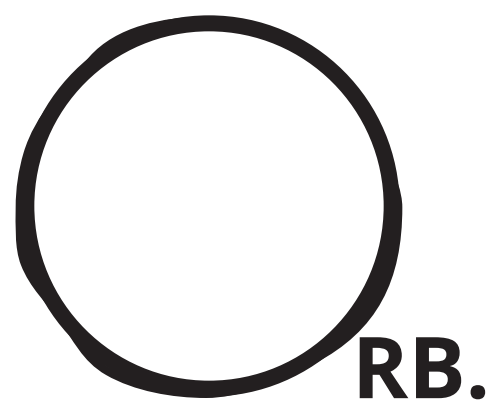




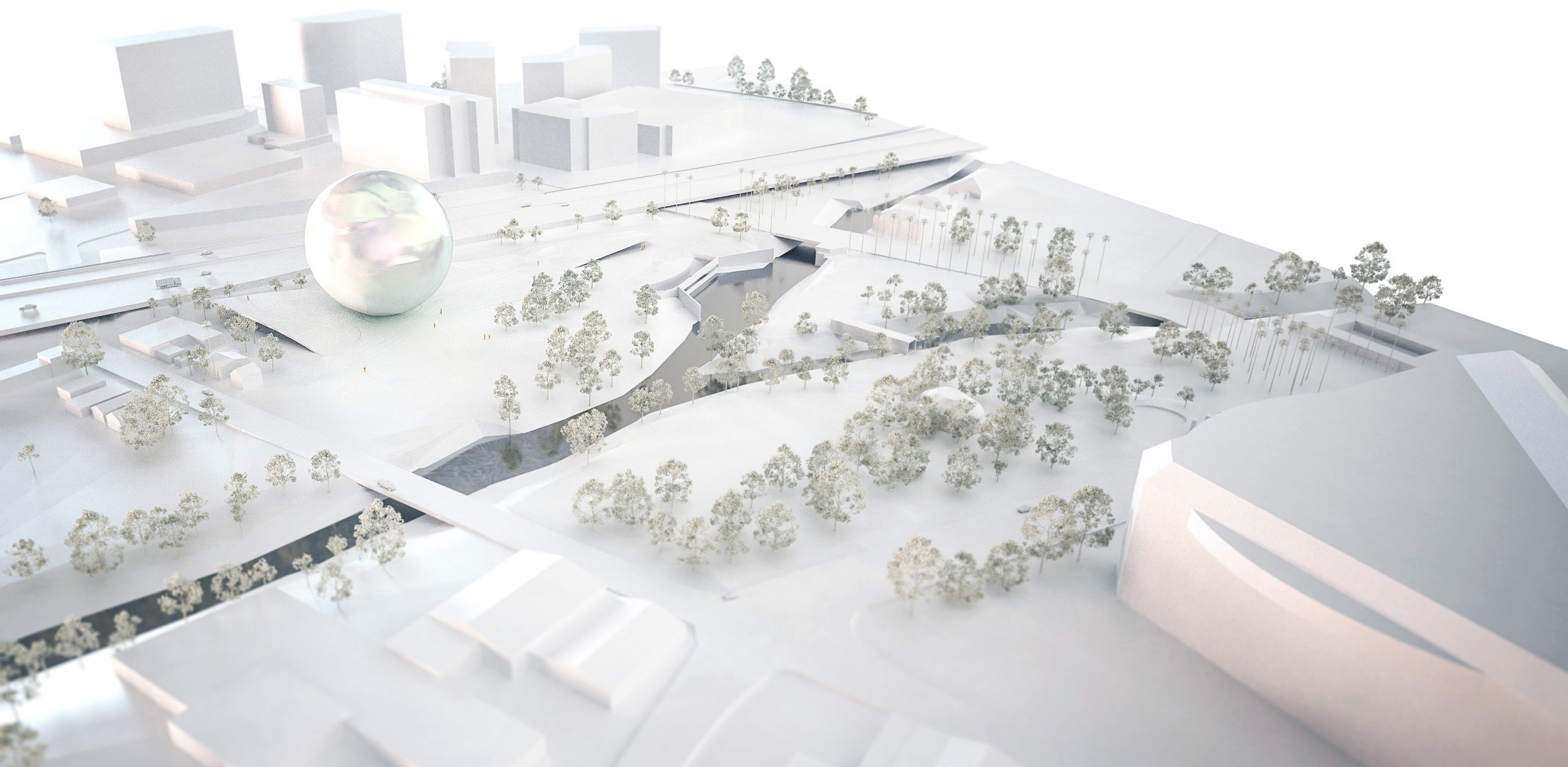
view from highway 87



AN ICON THAT'S ALIVE.

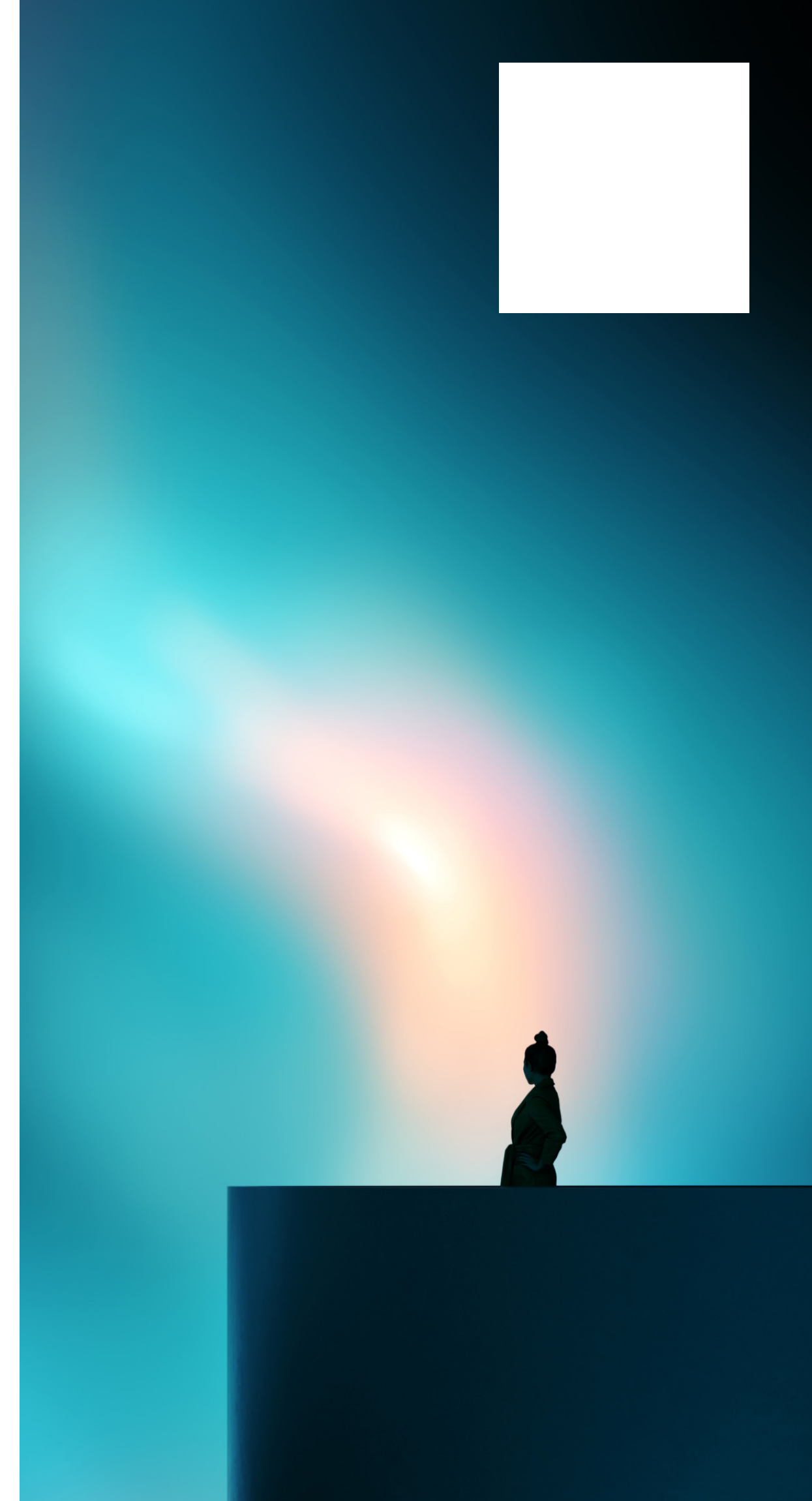
Towering but vulnerable, object but also being. Its skin is malleable, expressive and interactive. It ripples and glows, responds to its surroundings, even appears to be breathing. A soft robotics mechanism provides movement and illumination, shifting the appearance of the orb at will. The double skin is also the thermal envelope and the energy cell. Under the translucent membrane, all pneumatic and illumination units are equipped with solar cells, exposed all year round to the Californian sun, allowing for the overall design to reach net-zero energy goals.

aerial view from NW





view from Arena Green East

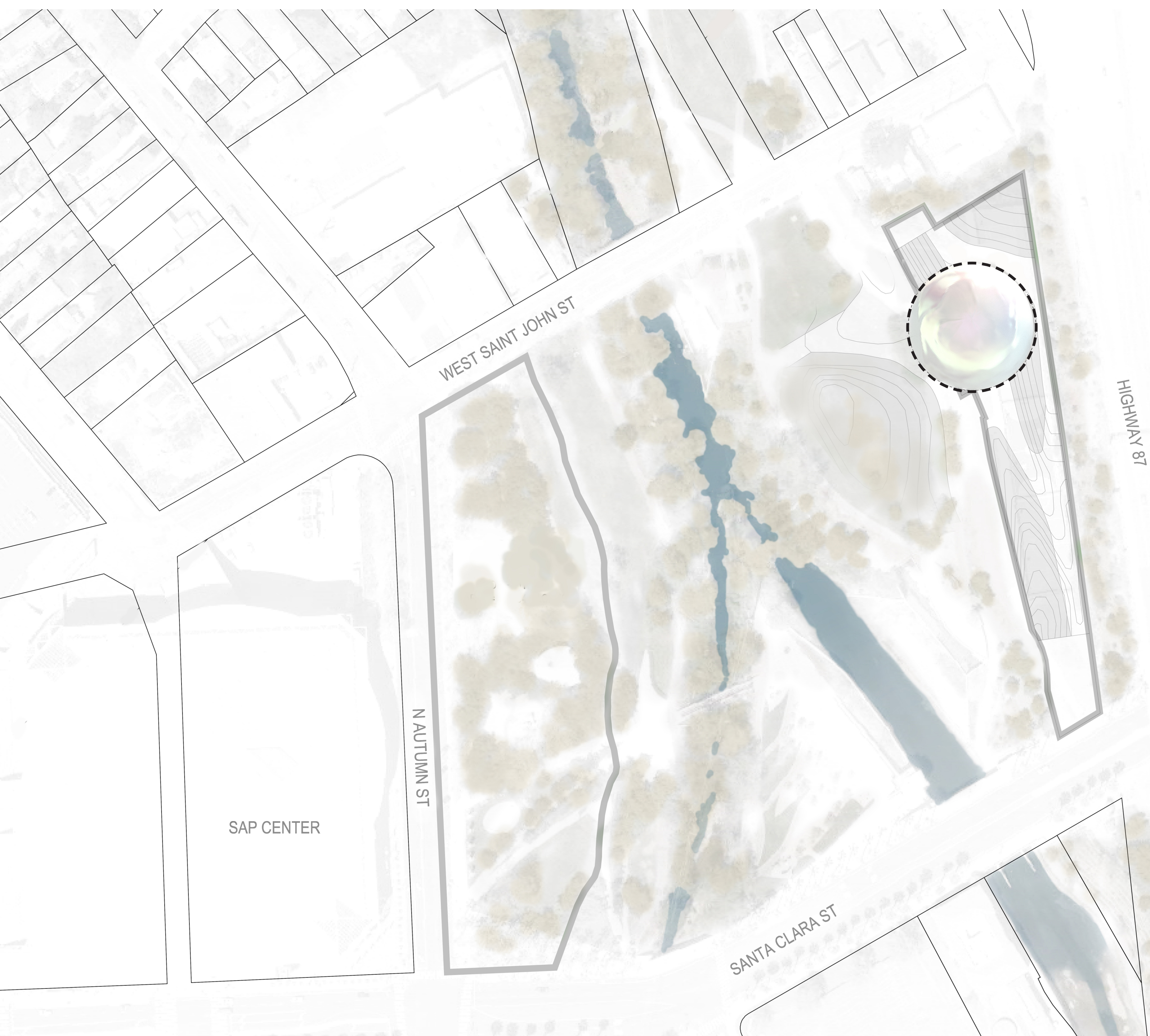


interior view



LANDMARK, FORUM, PORTAL.

The park folds gently to receive the orb, creating an amphitheater that can be both a playground and a forum. The new topography peels off the ground at the edges, inviting people under the orb and then through an elevator into its core, an introspective, otherworldly space.



site map

