

CONCEPT

"Life should not be presented the way it is or the way it should be, but just the way it appears in our dreams".

Anton Čechov, The Seagull

The 'Pillars' Project is an accessible sculpture/architecture, located in the East Side Area of the Urban Confluence Competition, next to Highway 87. The projection on the ground of the structure is 0.4130 ± acres, its max. length is 368ft and its max. width is 111ft. The most elevated point is the top of the elevator structure (198ft).

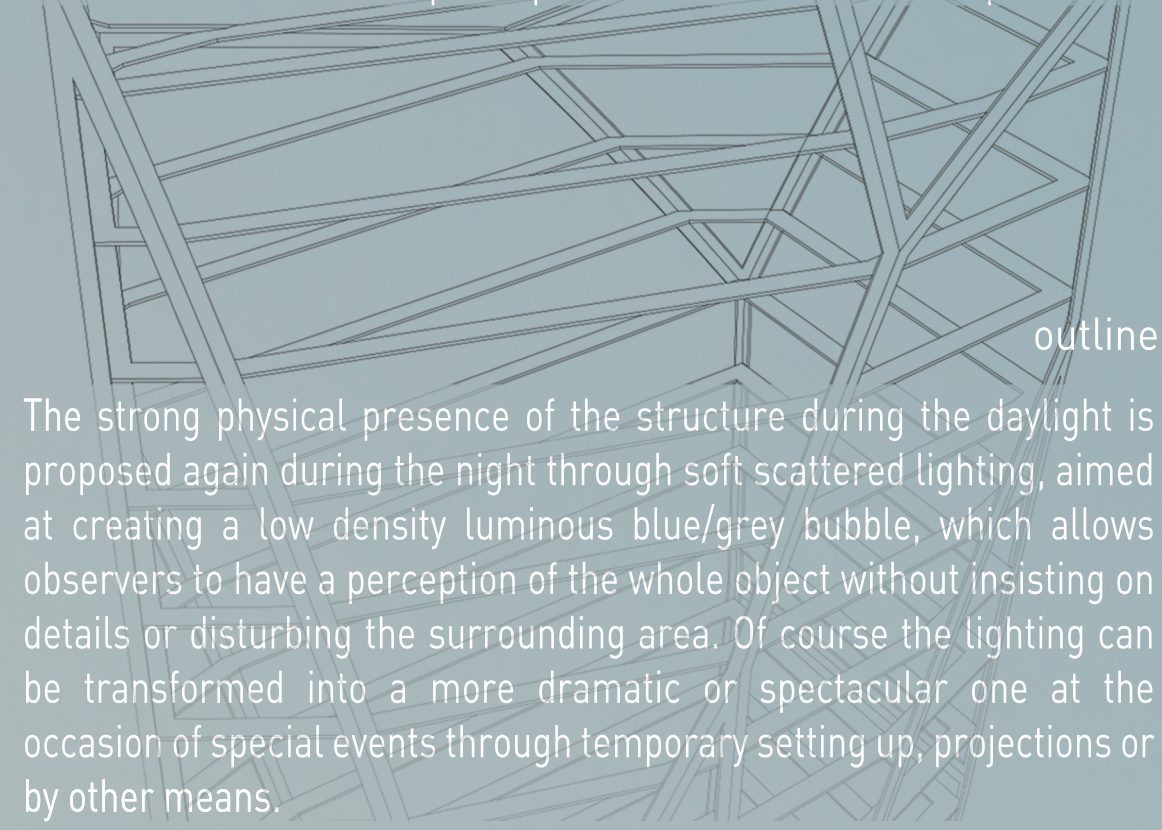
The name 'Pillars' is inspired by the famous photo 'Pillars of Creation', taken from Hubble Space Telescope in April 1995 and evoking a sentence used by Charles Spurgeon in a sermon in 1857, "...He [Christ] who created all things, and bears up the pillars of Creation."

The pillar structure of the interstellar cloud in the Eagle Nebula suggested both the megalithic geometry of the construction and its symbolic charge: an iconic and powerful vision which is out of time, majestic for its inverted sense of gravity, massive at its upper end but thin on the ground.



'Pillars' is a space for intimate thought and, at the same time, a panoramic point of view, a place for leisure and relax. The long perimeter of the two upper plazas unfolds without interruptions and allows visitors to self-isolate looking outwards or to socialize using the central spaces. The structure deliberately lacks bars, cafeterias, restaurants, etc. which can be located in other areas of the park.

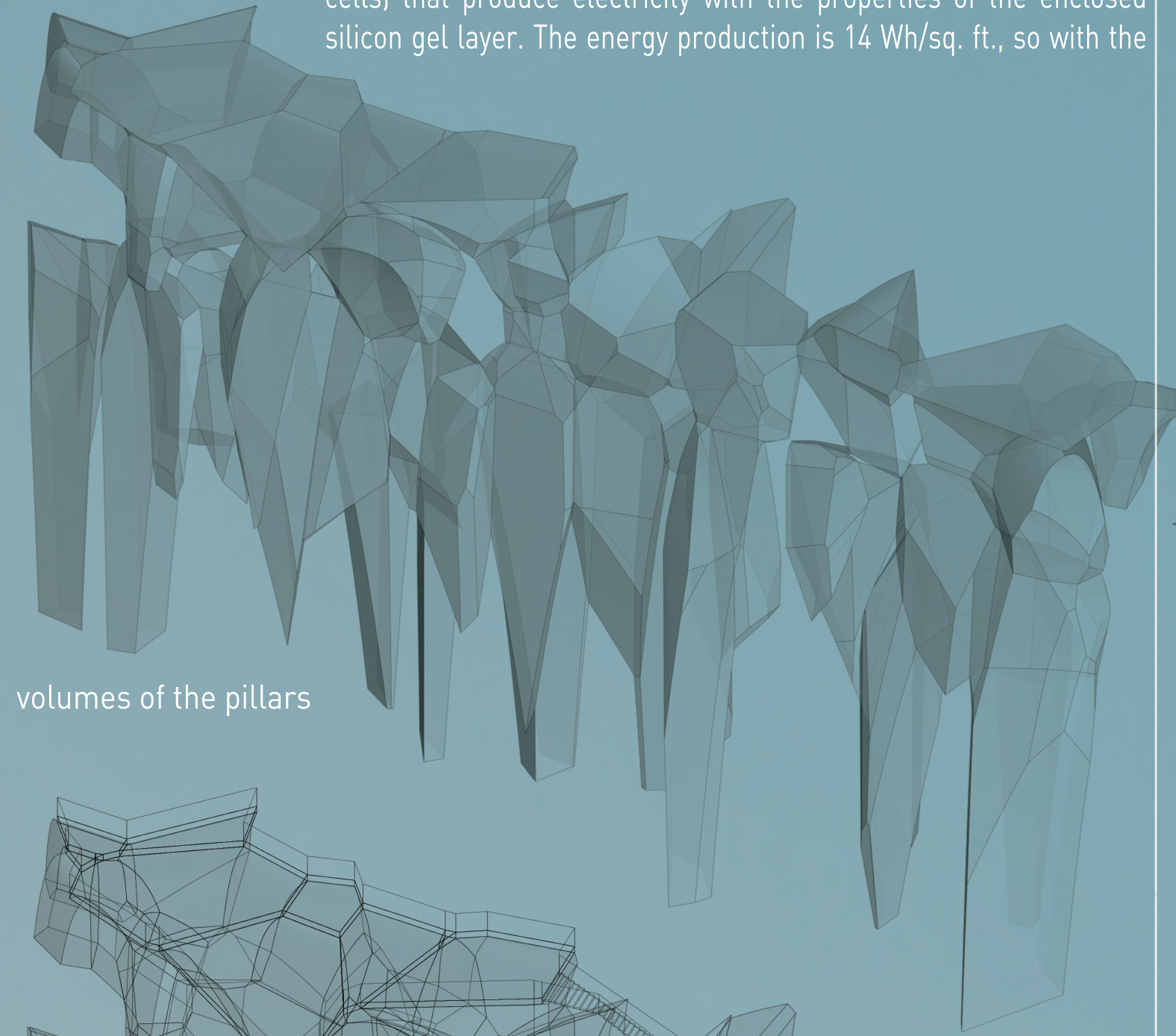
Technically the construction is a big sound damper protecting the urban park, both from the Highway 87 and the traffic caused by the nearby airport. All flooring is made in blue natural soft rubber and the structure in steel, using ship building techniques. Internal sound mufflers and external ship-like paint also enhance acoustic protection.



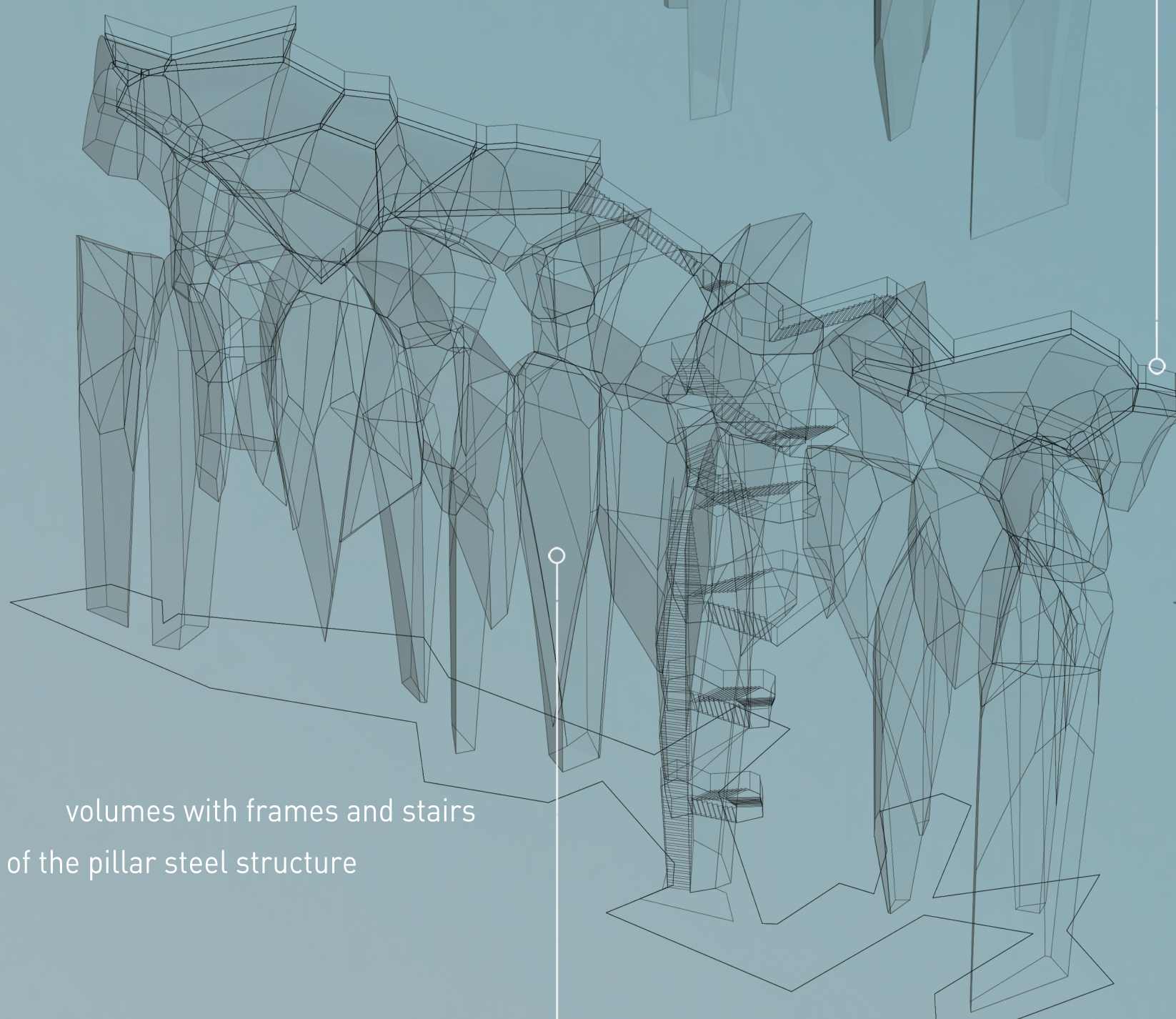
outline of the pillar steel structure

The strong physical presence of the structure during the daylight is proposed again during the night through soft scattered lighting, aimed at creating a low density luminous blue/grey bubble, which allows observers to have a perception of the whole object without insisting on details or disturbing the surrounding area. Of course the lighting can be transformed into a more dramatic or spectacular one at the occasion of special events through temporary setting up, projections or by other means.

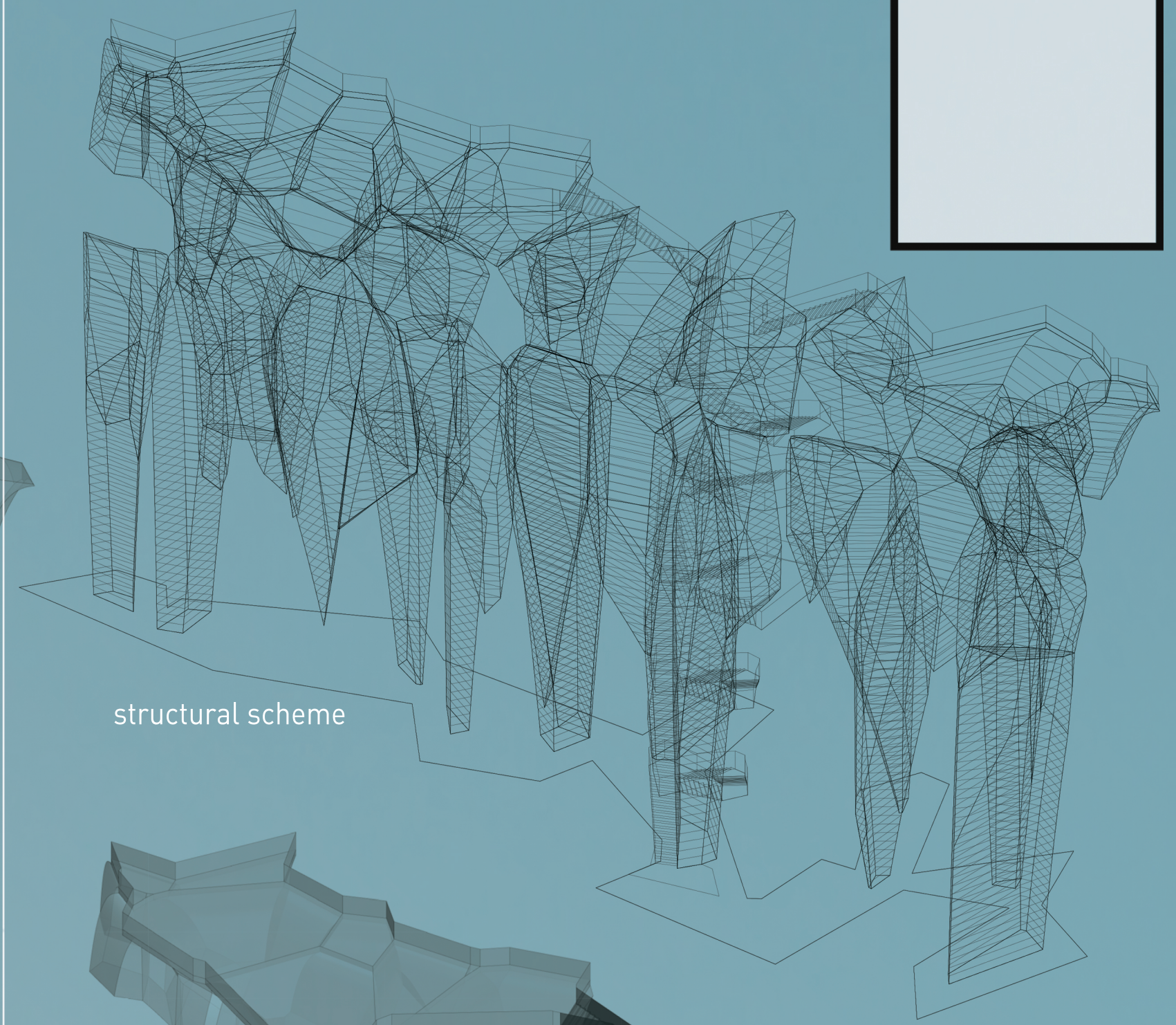
Net-Zero Strategy - the project considers an amount of energy supplied from renewable energy sources on site (photovoltaic energy) higher than the amount of energy used by Pillars. The glass railings are made with transparent photovoltaic glass (without visible cells) that produce electricity with the properties of the enclosed silicon gel layer. The energy production is 14 Wh/sq. ft., so with the



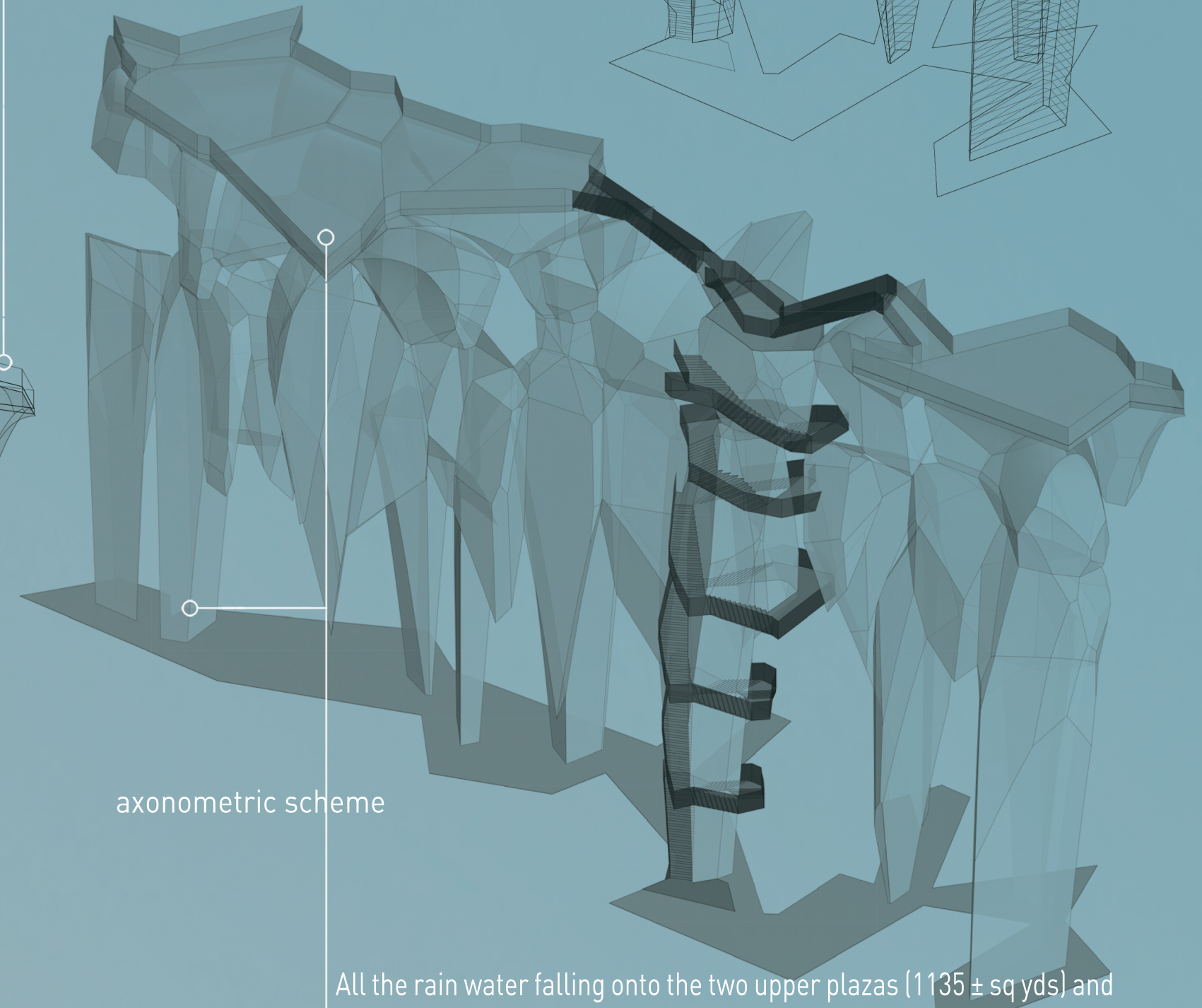
volumes of the pillars



volumes with frames and stairs



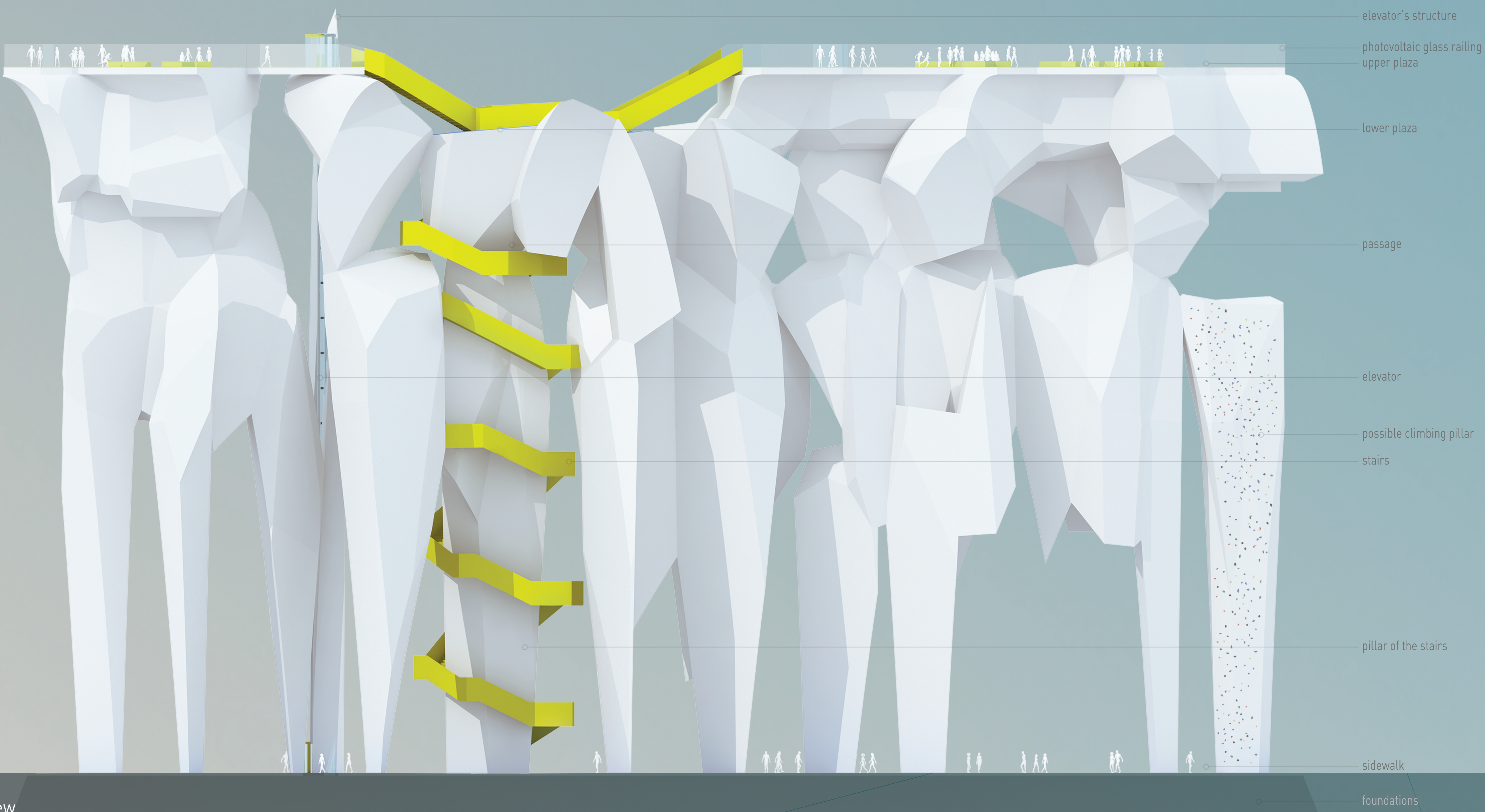
structural scheme



axonometric scheme

The building acts as a gigantic acoustic damper, thus guaranteeing visitors the maximum reduction of external noise, especially caused by the nearby Highway 87 and the airplanes flying to and from Mineta San José International Airport (rubber flooring, sound damper paint, sound-absorbing materials, sound mufflers).

All the rain water falling onto the two upper plazas (1135 ± sq yds) and washing away along the architecture is collected and conveyed in tanks placed at the base of the pillars and then used for irrigation and nebulization (after adequate treatment and purification in the latter case), in order to create a comfortable microclimate, both at the foot of the structure and on its top.



elevator's structure

photovoltaic glass railing

upper plaza

lower plaza

passage

elevator

possible climbing pillar

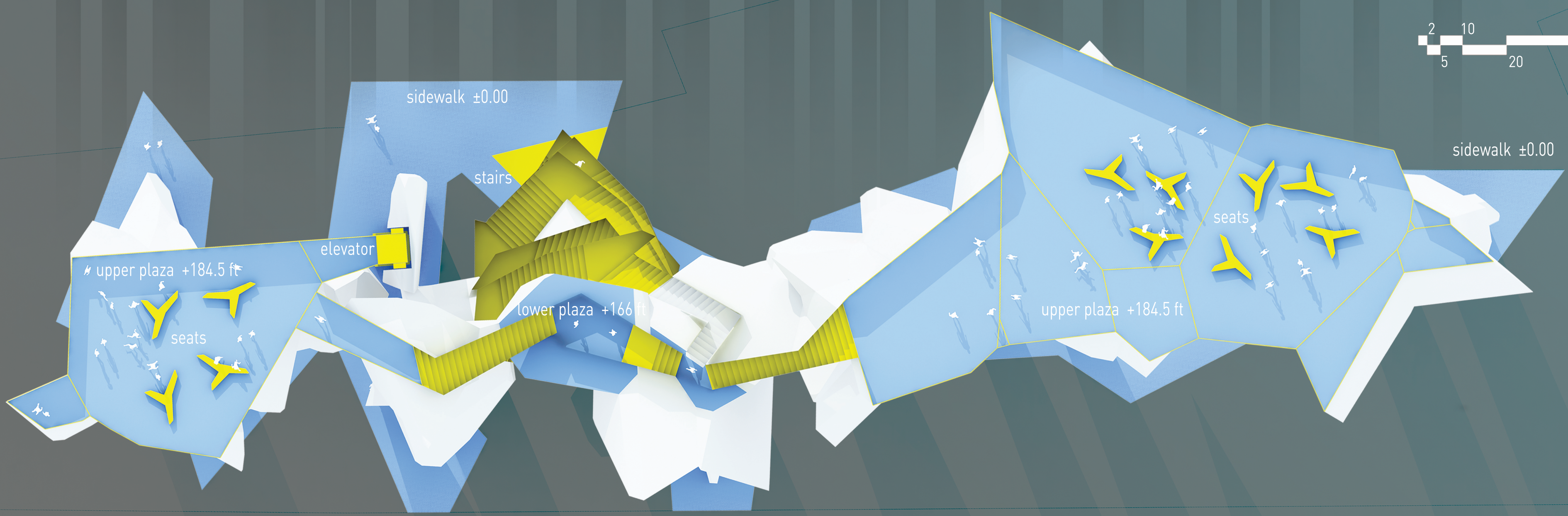
stairs

pillar of the stairs

sidewalk

foundations

east view

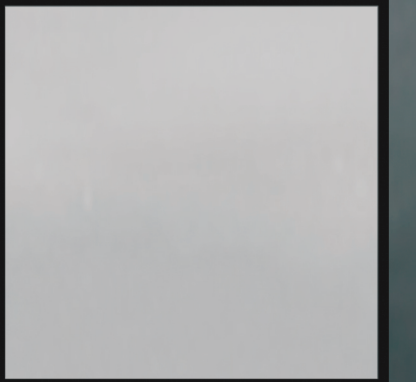


plan



KEYWORDS

- **aesthetic technologies** – there are no distinctive elements between aesthetics and technology, the integration is complete and the image is one;
- **metabolic sculpture** – the construction can be either observed or lived, the only variable element of its configuration is the presence/absence of man;
- **rain upper plazas** – the surfaces and paths are all sensitive to the water cycle (collection, storage and treatment) and they are refreshed by means of it;
- **symbolic stairs** – the stairs climbing on one of the main pillars permit everyone to live an ascent experience following the curves of an irregular helix, like in old historical buildings;



- **acoustic damper structure** – the building acts as a gigantic acoustic damper, thus guaranteeing visitors the maximum reduction of external noise, especially caused by the nearby Highway 87 and the airplanes flying to and from Mineta San José International Airport (rubber flooring, sound damper paint, sound-absorbing materials, sound mufflers);
- **mat building** – the building is a mat element: not dazzling and with no reflecting elements;
- **lighting** – the illumination is soft, located at various light points characterized by low intensity and short wavelength (light green and blue) and not pointing at the sky;
- **leisure open areas** – the building is accessible and can be visited at various heights and every area is a path, a passage or a panoramic point at the same time;
- **physical presence** – the building is an impressive object, full of strength and power. An out of time structure to enjoy the landscape, being itself part of it, as an iconic breathtaking landmark.

