

THE DRAGONS OF SILICON VALLEY

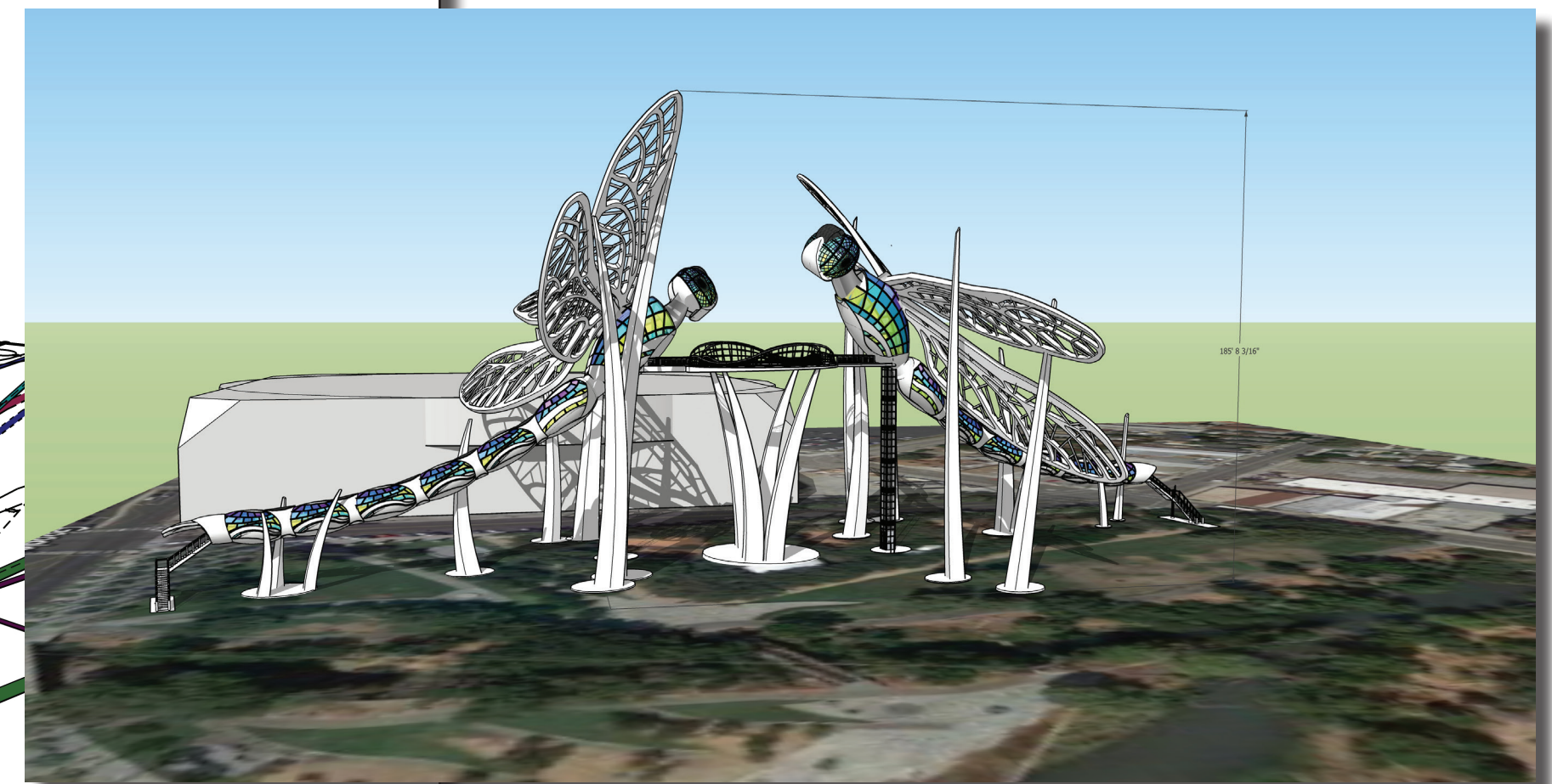
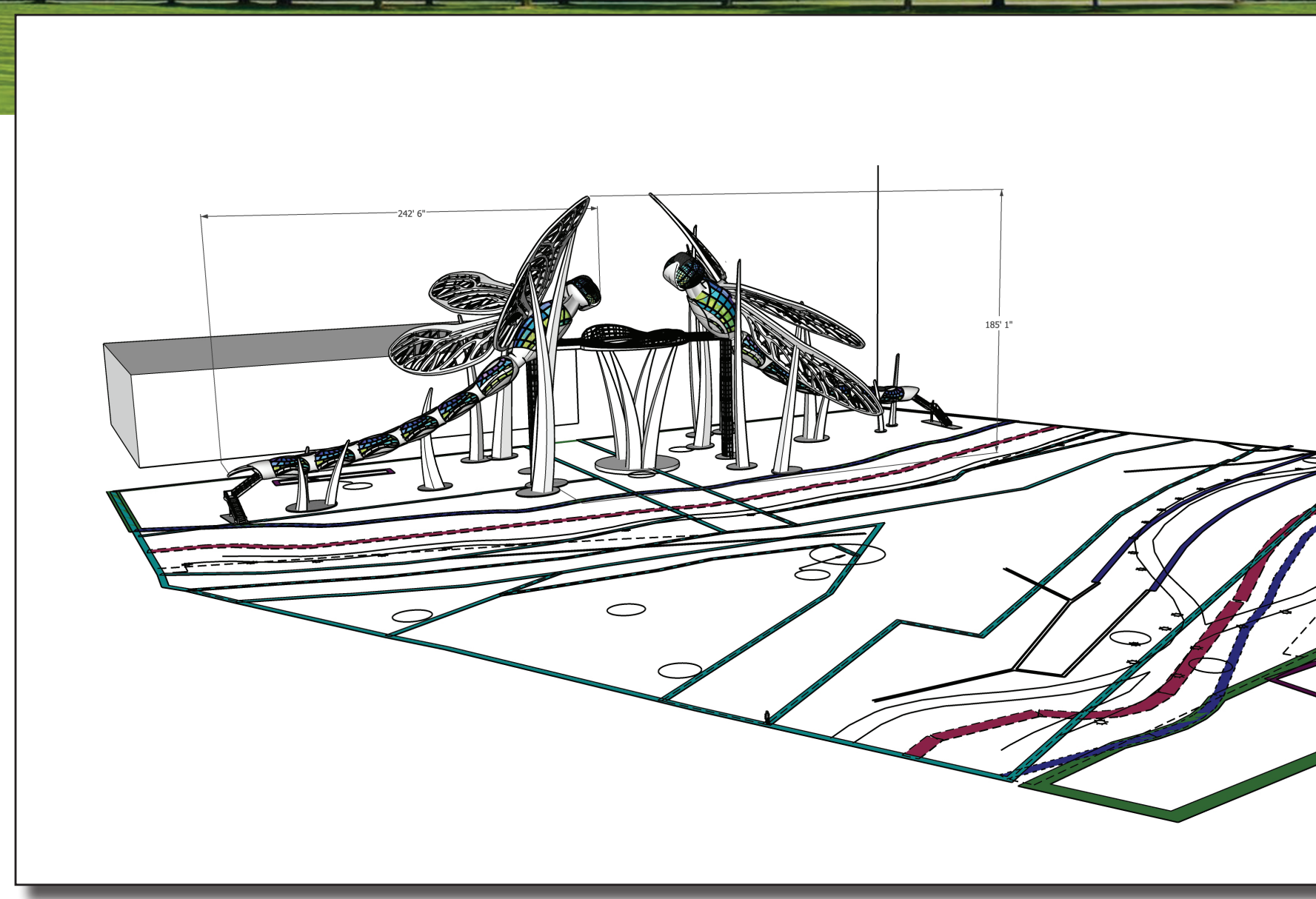
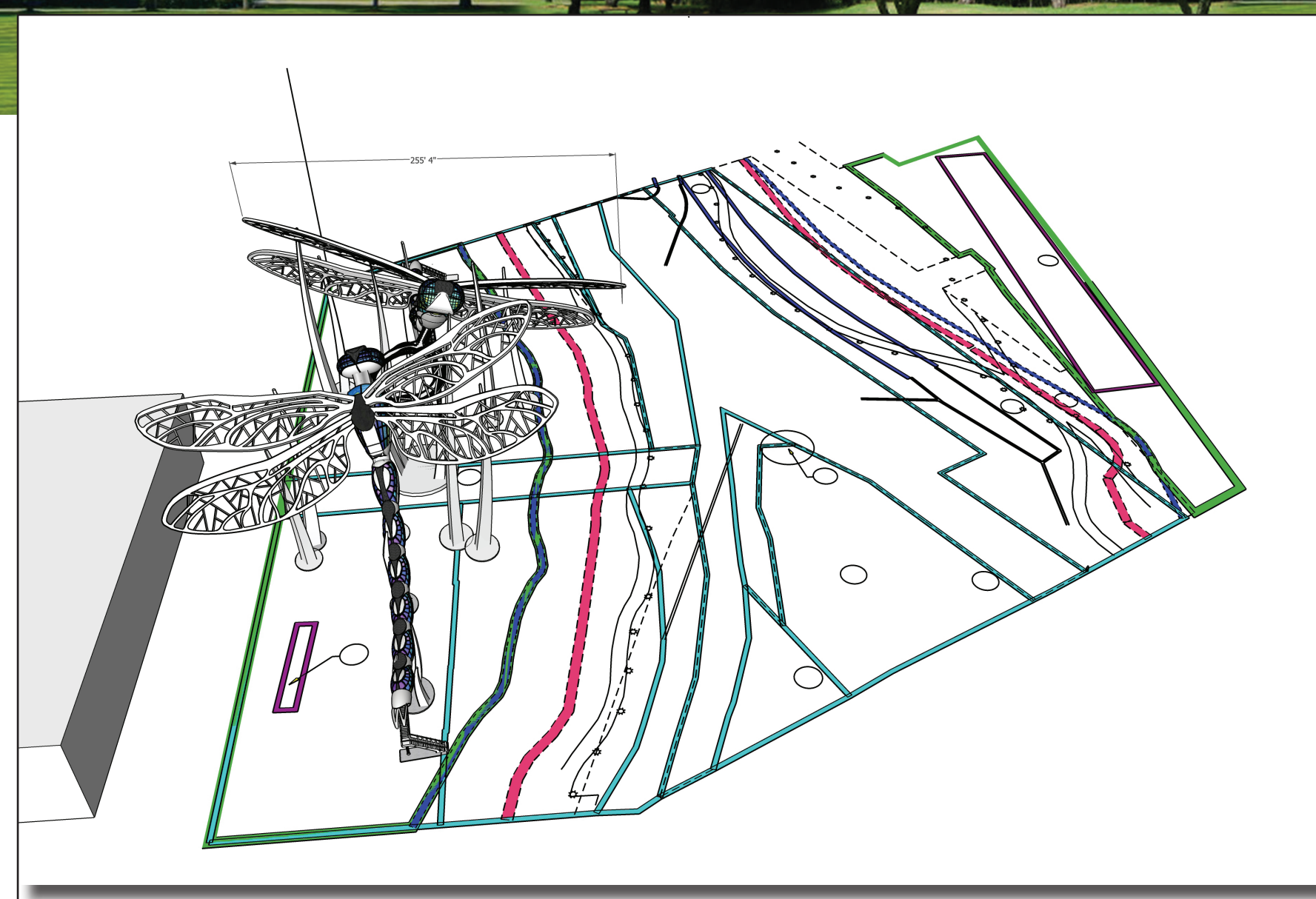
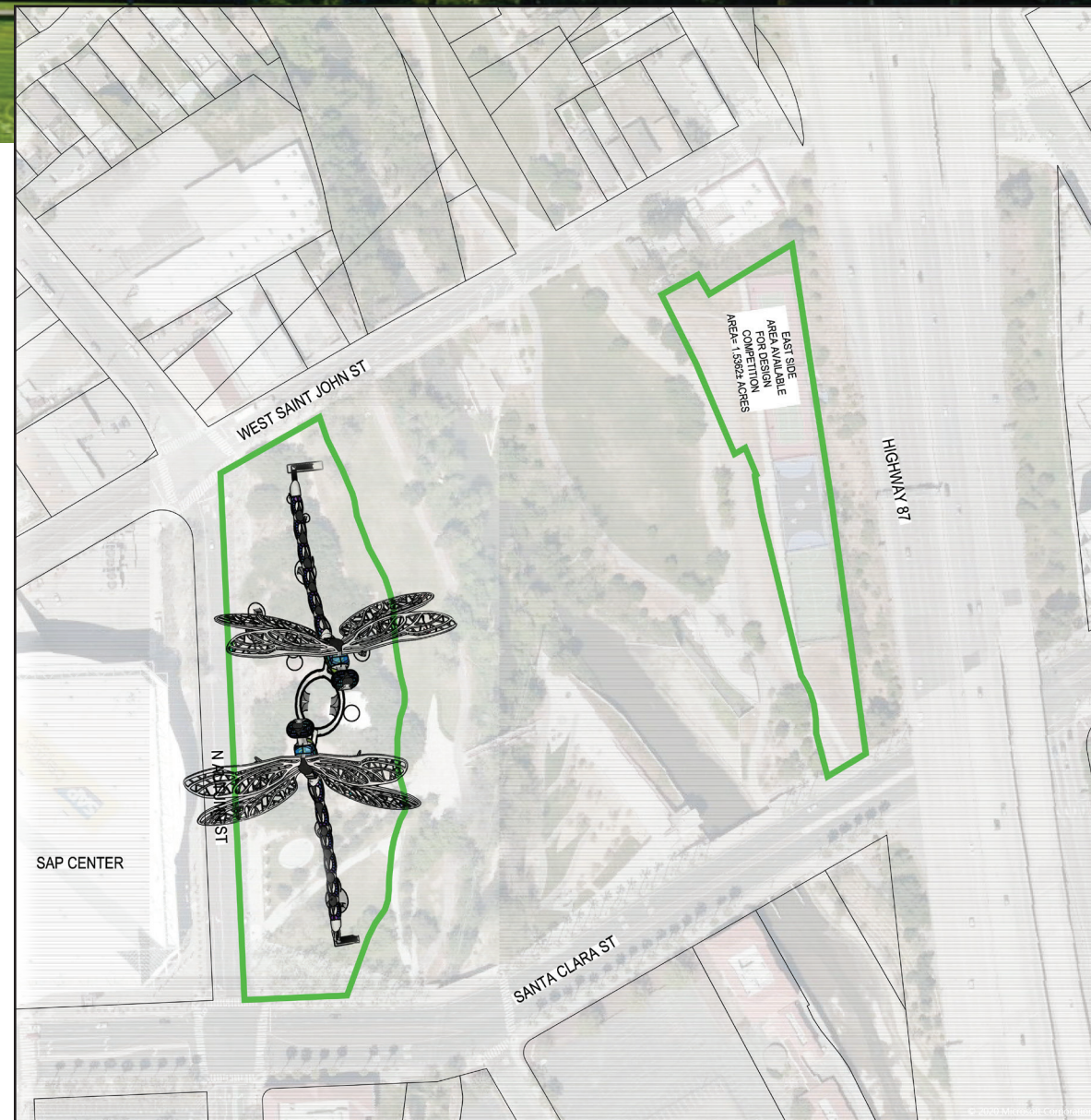
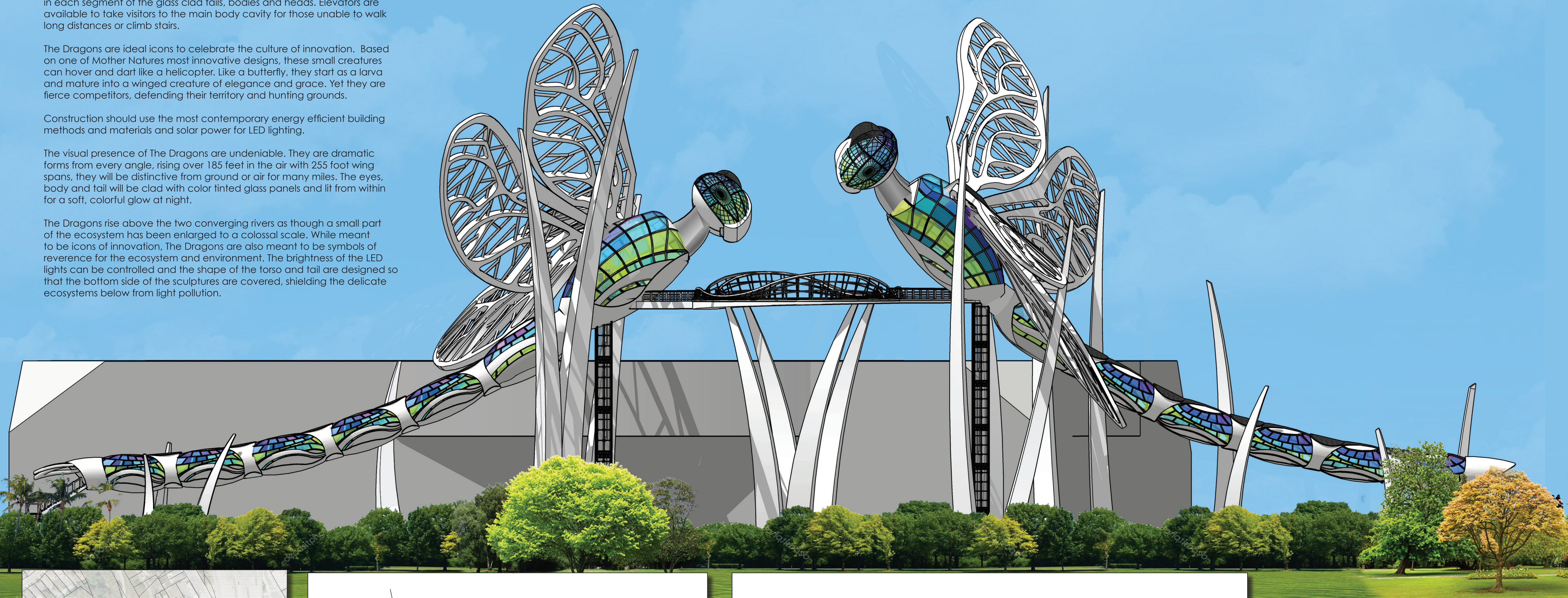
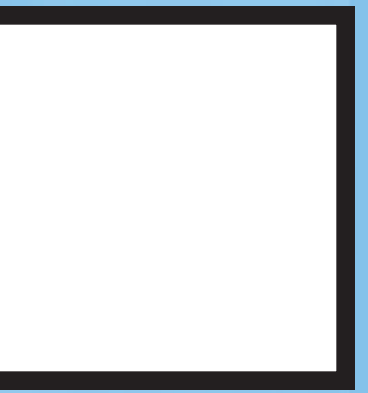
The Dragons of Silicon Valley create an iconic destination. Based on creatures found in every continent on the earth, the two forms rising above the park are recognizable to every culture around the world. Designed to be interactive, visitors can walk the entire length of the sculptures from tail to head and over from one fly to the other. Observation platforms are found in each segment of the glass clad tails, bodies and heads. Elevators are available to take visitors to the main body cavity for those unable to walk long distances or climb stairs.

The Dragons are ideal icons to celebrate the culture of innovation. Based on one of Mother Nature's most innovative designs, these small creatures can hover and dart like a helicopter. Like a butterfly, they start as a larva and mature into a winged creature of elegance and grace. Yet they are fierce competitors, defending their territory and hunting grounds.

Construction should use the most contemporary energy efficient building methods and materials and solar power for LED lighting.

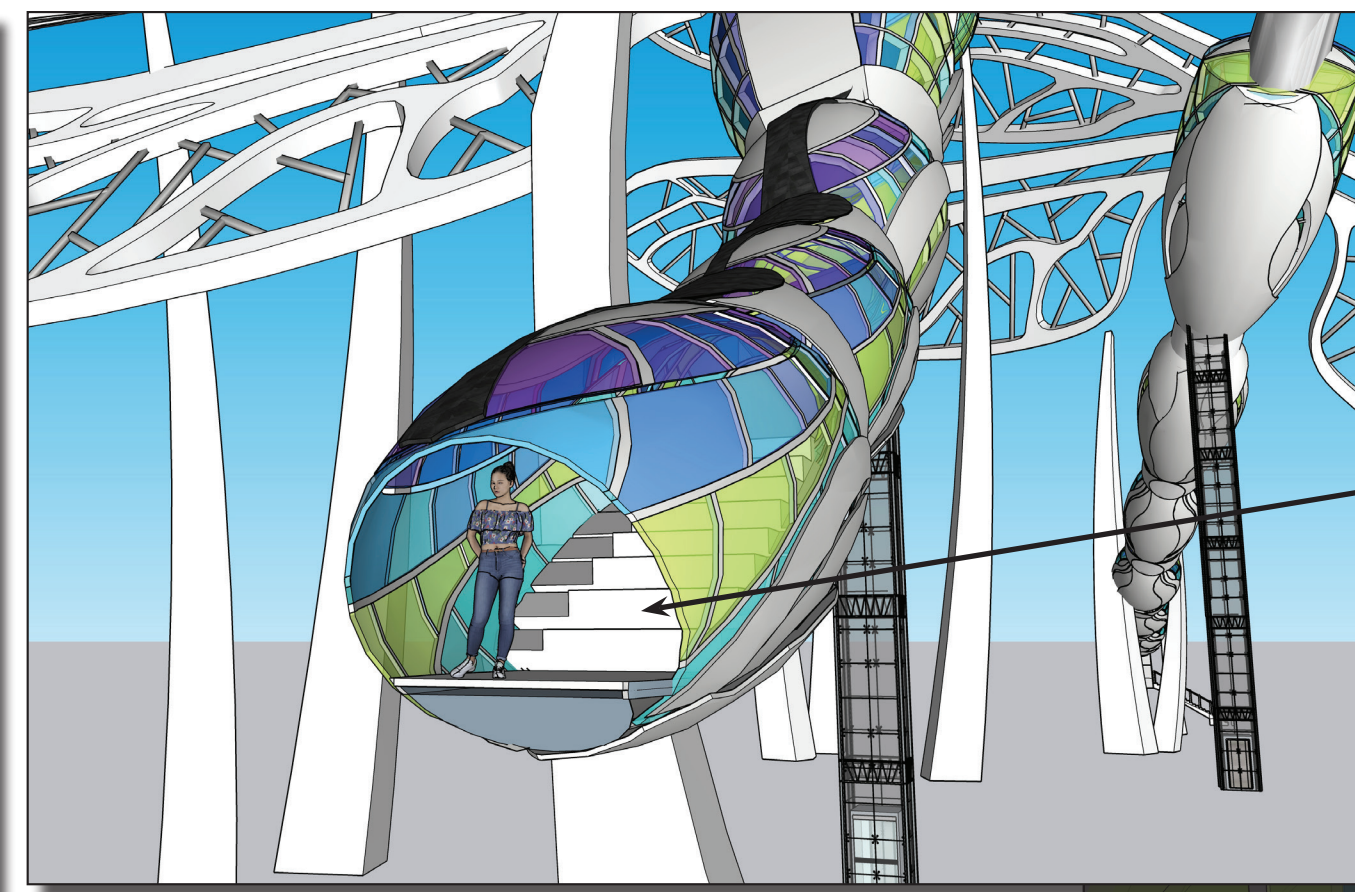
The visual presence of The Dragons are undeniable. They are dramatic forms from every angle, rising over 185 feet in the air with 255 foot wing spans, they will be distinctive from ground or air for many miles. The eyes, body and tail will be clad with color tinted glass panels and lit from within for a soft, colorful glow at night.

The Dragons rise above the two converging rivers as though a small part of the ecosystem has been enlarged to a colossal scale. While meant to be icons of innovation, The Dragons are also meant to be symbols of reverence for the ecosystem and environment. The brightness of the LED lights can be controlled and the shape of the torso and tail are designed so that the bottom side of the sculptures are covered, shielding the delicate ecosystems below from light pollution.

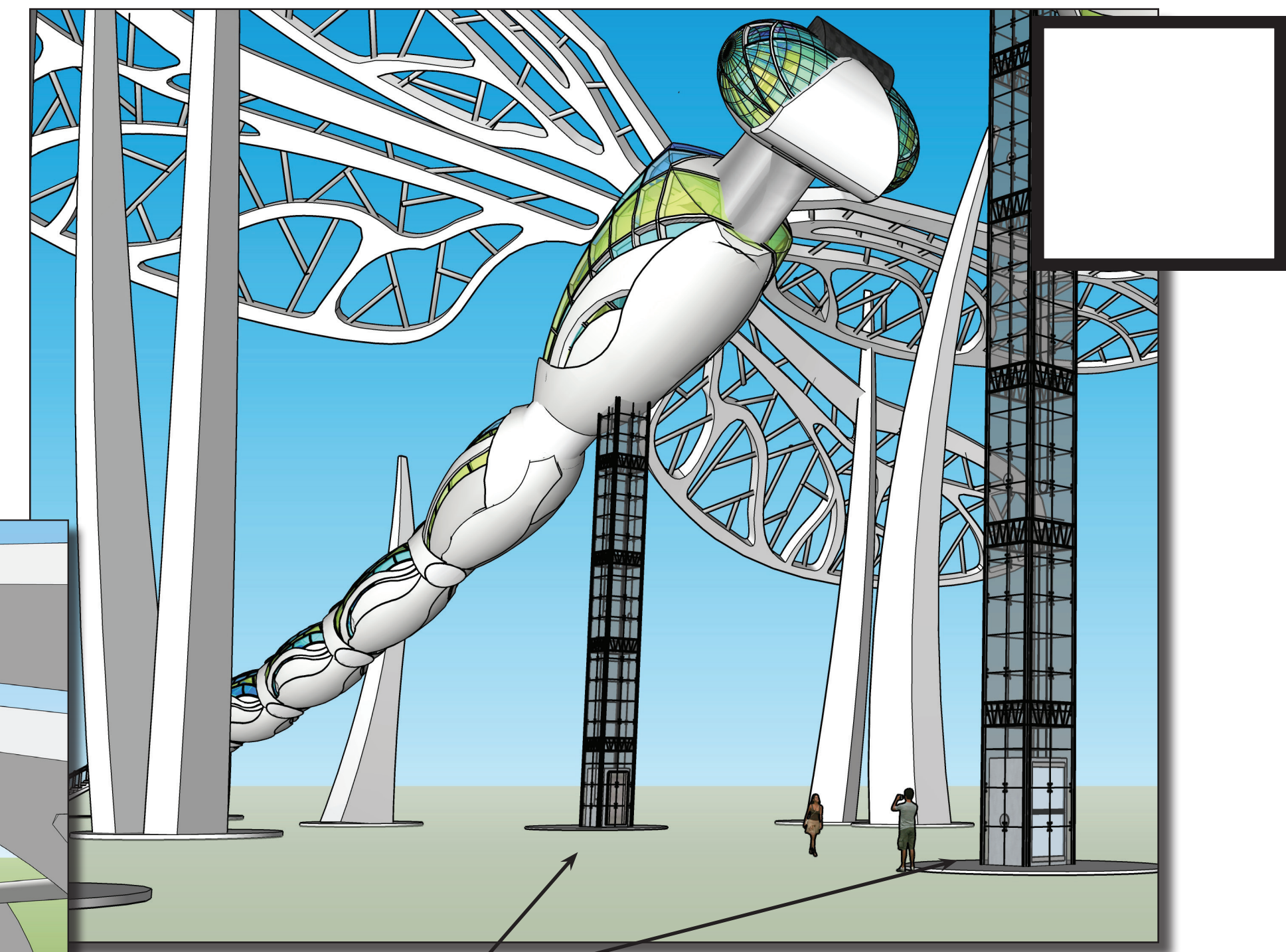




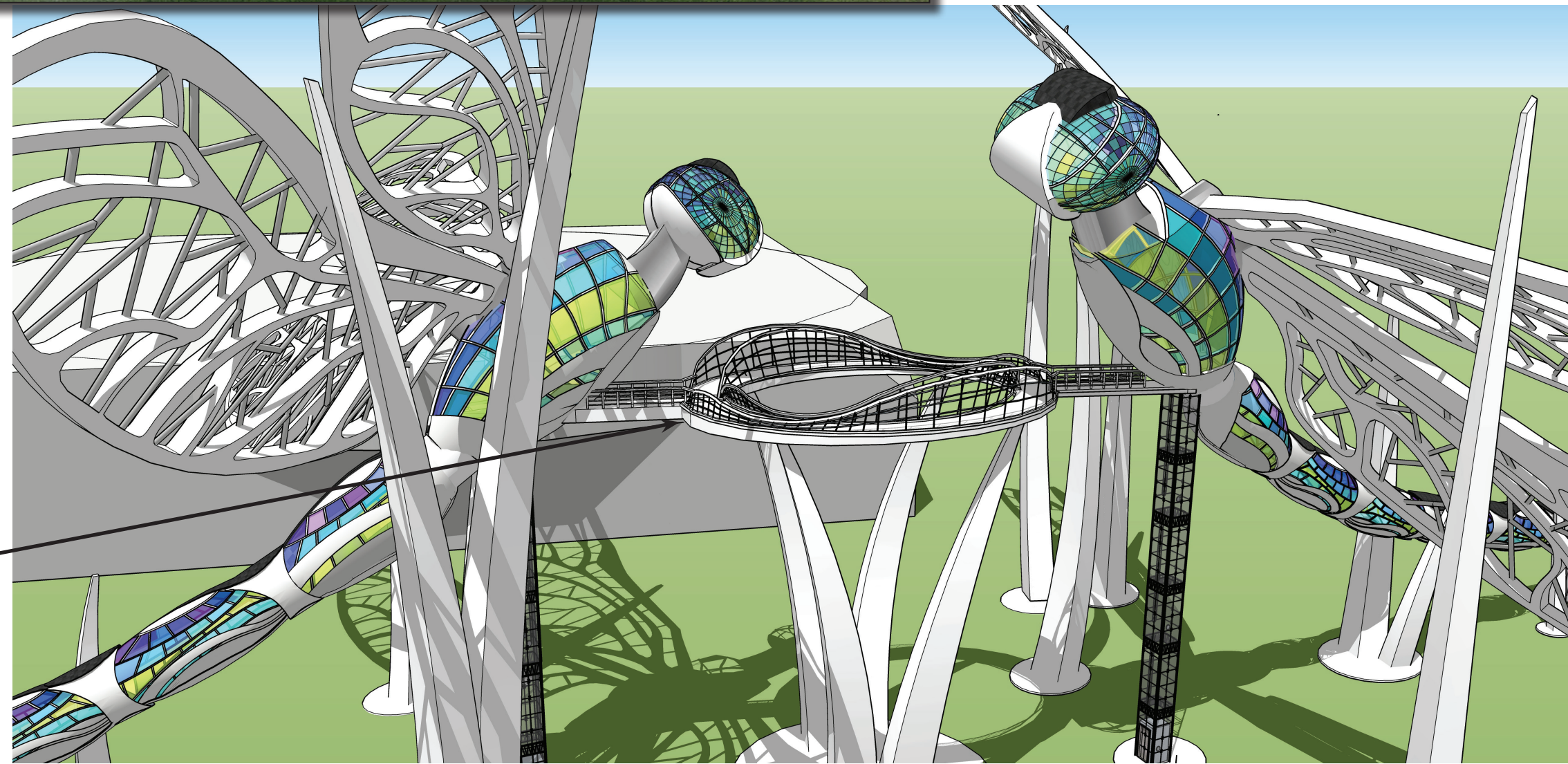
Sculptures are designed so that they can be walked through from tail to head. A bridge connects the two structures.



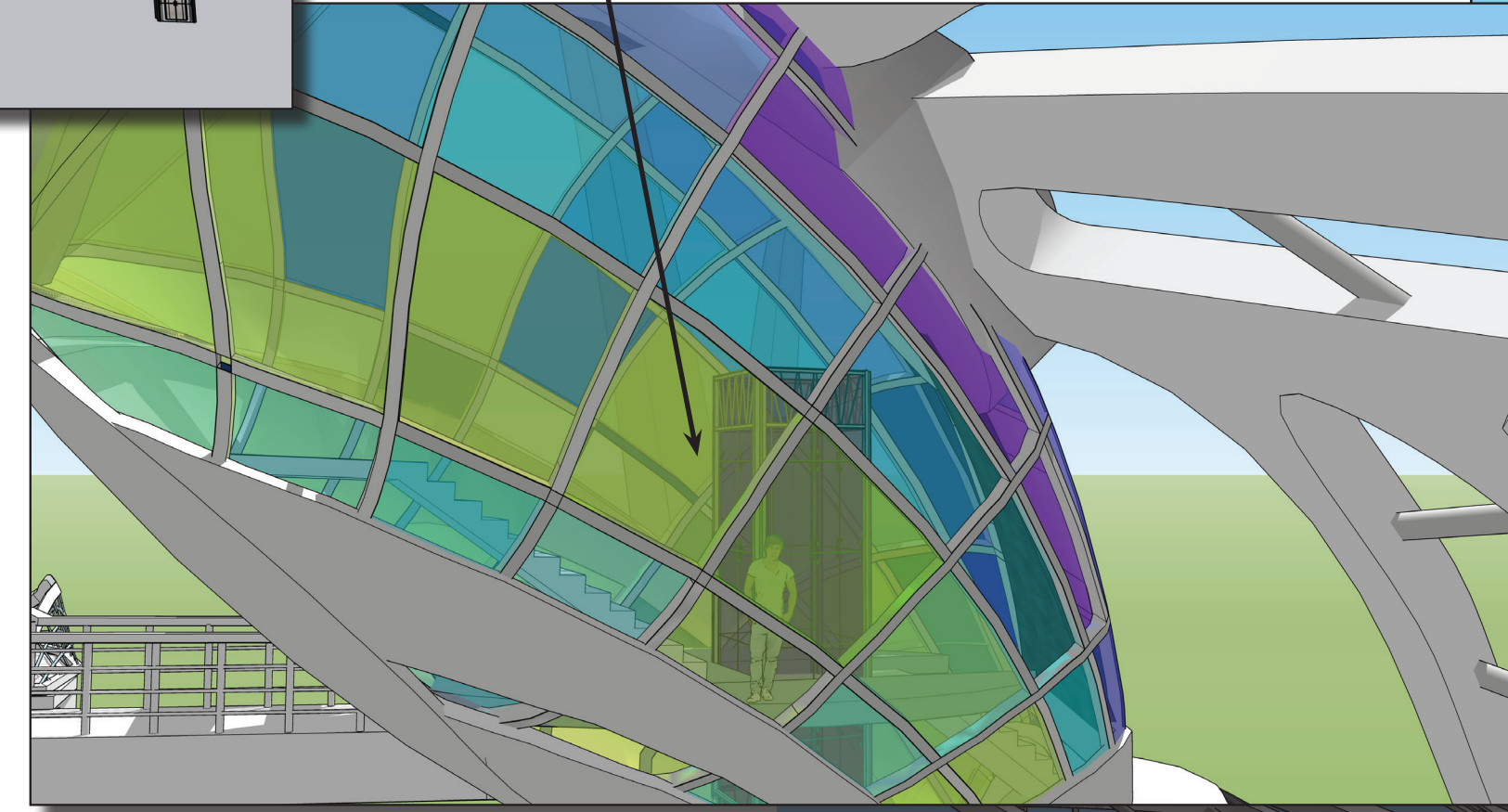
Viewing platforms, walkways and stairs run through the glass clad tail, body and head.



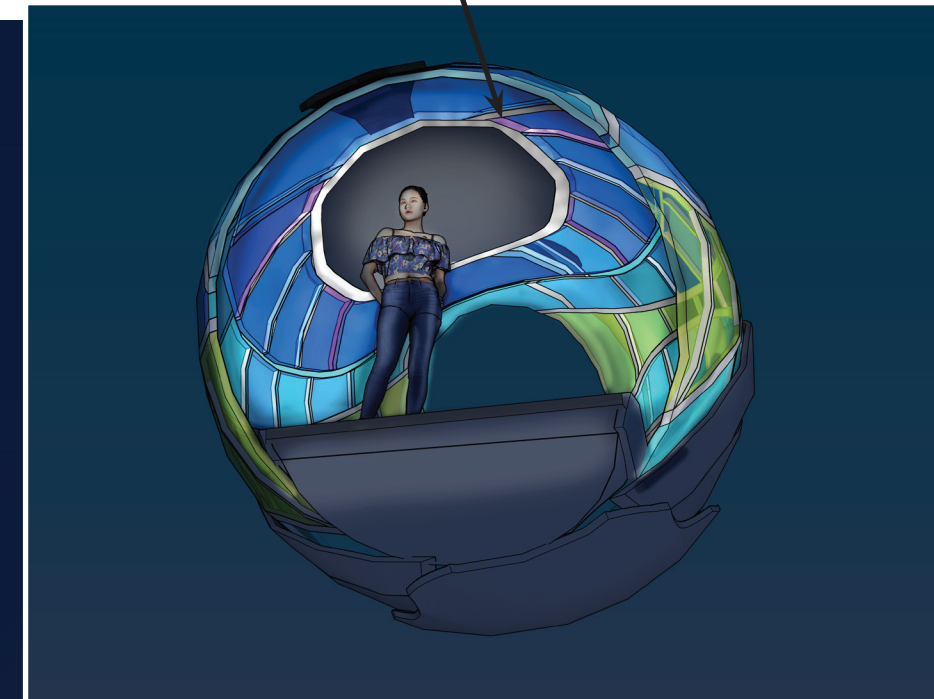
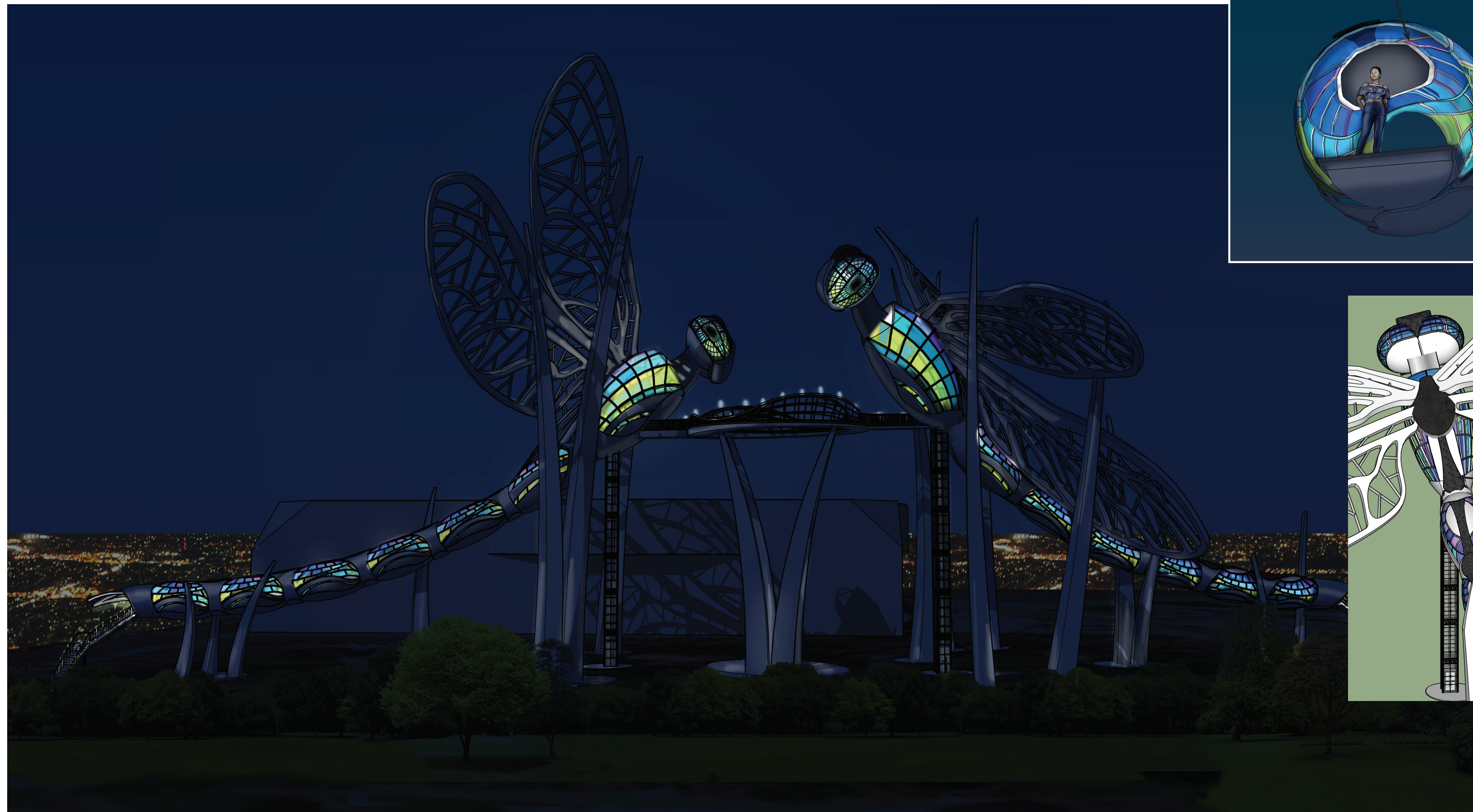
Elevators to the main body cavities allow access for all.



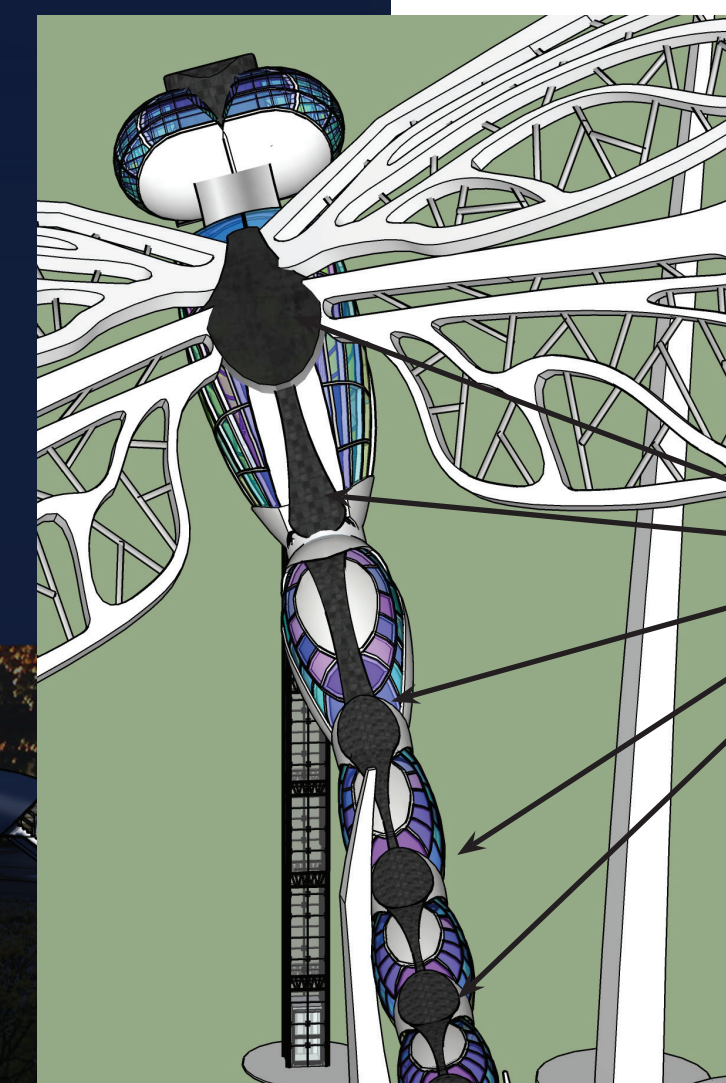
Walking bridge spans the two flies so visitors can cross from one to another.



LED lights allow for controllable low level lighting and solid lower panels shield the vulnerable ecosystem below from light pollution.



Dynamic views from every angle, including from the sky.



Solar cells on the top side create an exoskeleton that also captures energy for the internal LED lighting and power.

