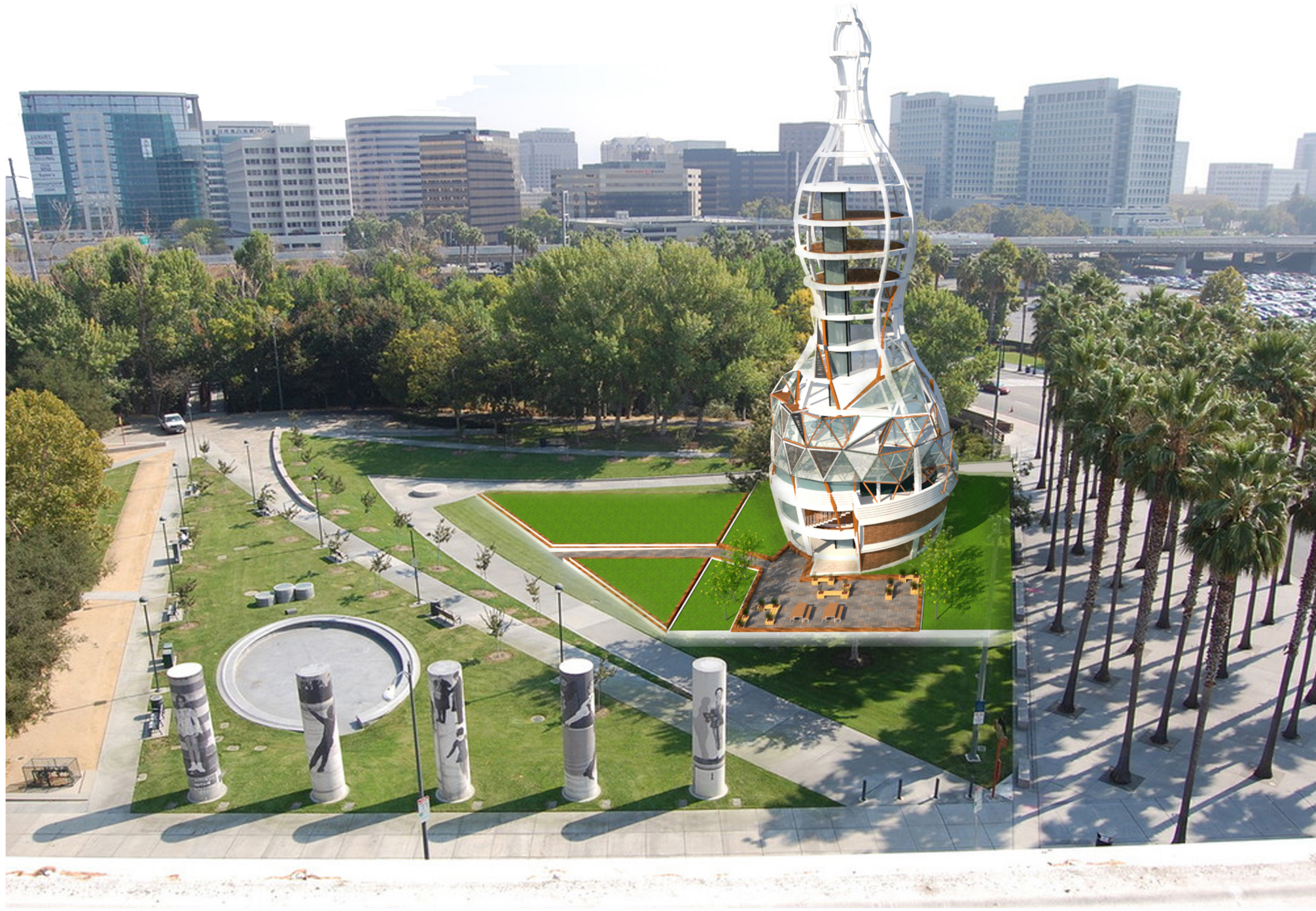


PROJECT ON SITE



Function/Use

The building operates as a people's museum, showing the history of the silicon valley, past and present, the technologies that made it what it is, with year round exhibitions from local artists, producers, anyone with creative ambitions and storytelling, with spaces to read, get a drink, offering public space the first 2 floors, spaces above for the restaurant and conference spaces, and small shared office spaces for tech/creative startups. During the evening, there will be a bar/movie nights/cinema experiences, engaging the public realm and offering a place of respite, in conjunction with the SAP centre offering a cultural destination, historical yet modern design aesthetic.

Visual identity and pride

The number 1 objective and aims were to create a beautiful distinct landmark, gracing the skyline and giving the community a source of inspiration, and an engaging interesting building through the use of aesthetically pleasing materials, strategic lighting, slim yet firm appearance, something that beautiful, visceral and has raw function and offers great events/museum/catering space with great views.

Landmark

Standing 14 floors with another 4 as a weather monitor/light show means the structure is 60m tall, with most of the floorspace in the first 2/3 of the building, the the second 'bubble' offering restaurants and business floors for events/conferences.

Lighting

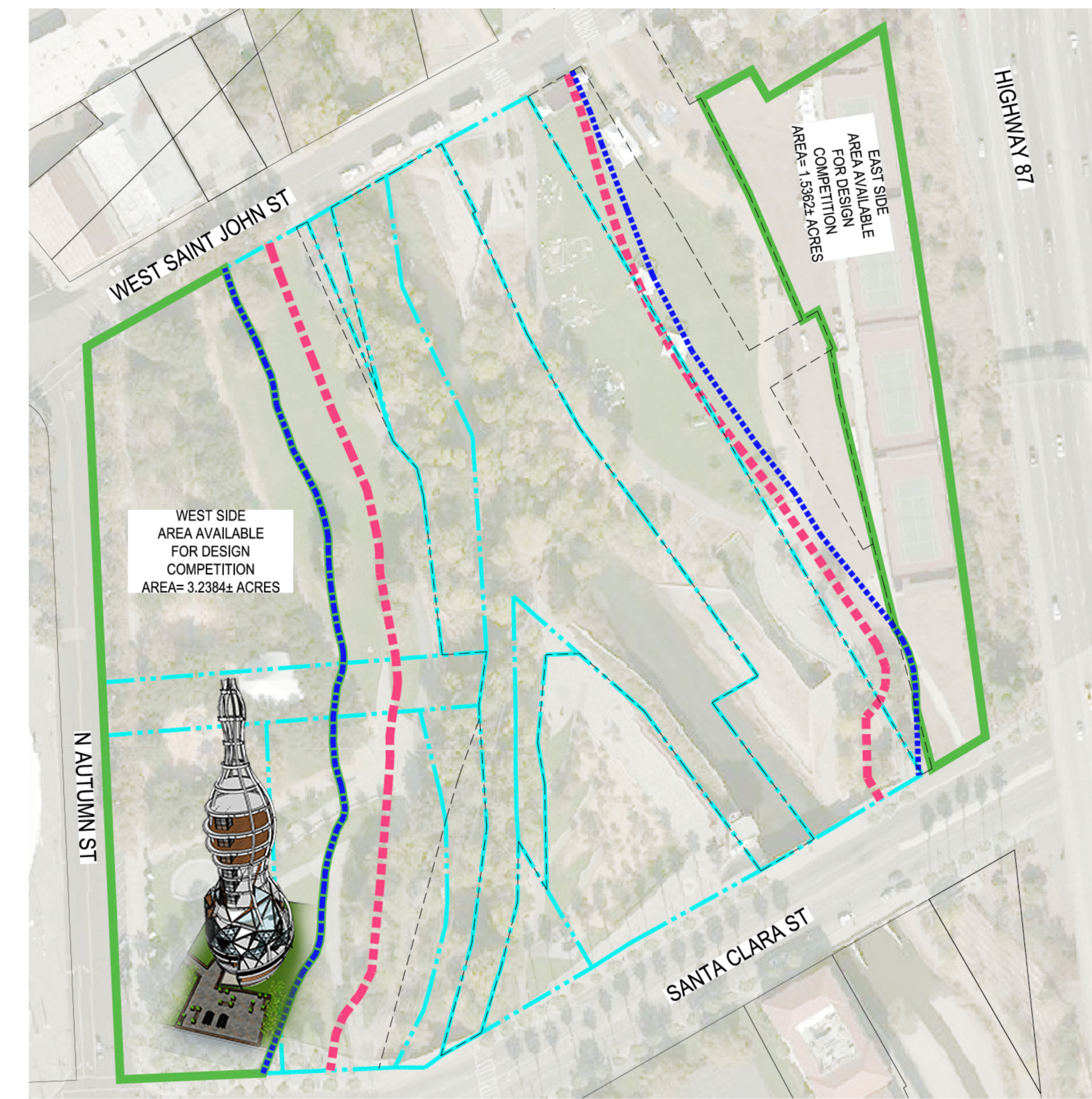
Careful consideration was given to provide ambient lighting during the day/evenings with lightshows that appear at evening/night time, and can even host screens with LED technology in the panels, which are solar driven/collecting during the day, harnessing the abundant Californian sunshine. The lights can be moving, spiralling around the building, going up and down different colours, or calm ambient mode, and can adjust to any events at different times of the year, can host sporting events outside with outside seating arrangements.

Energy Harnessing/Sustainability

It would be made from locally sourced Californian timber, with self cleaning glazed elements, non-reflective (bird-friendly), and engineered timber floors to save on waste. Rainwater runs down the building's spirals and collects at the bottom where there is a plant room for easy maintenance access, and solar water storage area to heat water and the building at night.

Adaptability/Legacy

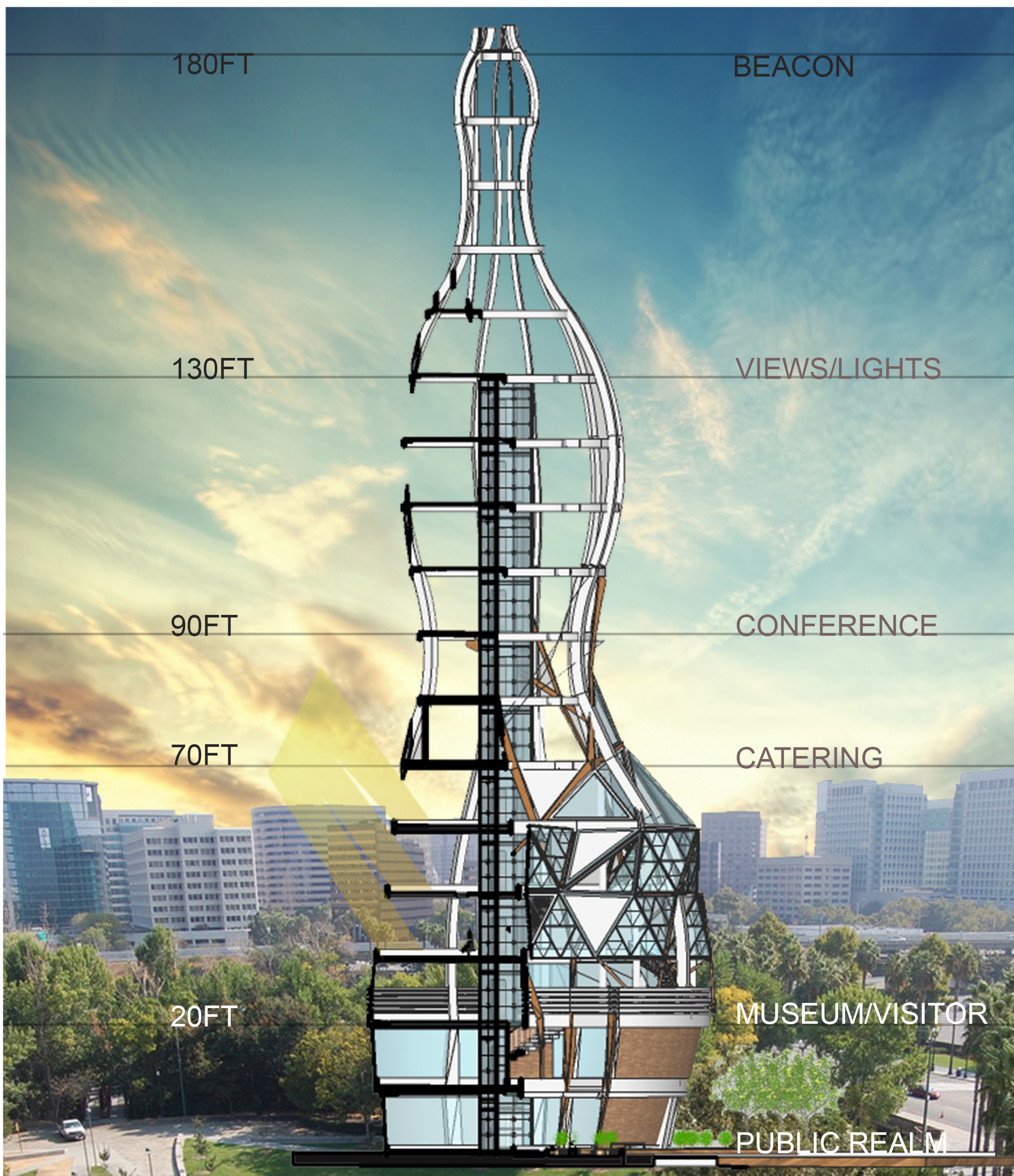
Being capable of providing multiple uses ie leisure, hospitality, cultural, business, office is thought to maximise adaptability year round, providing revenue whilst offering world class facilities. Its legacy is creating a space where diversity is celebrated, tech startups, creatives, public can share and enjoy.



Place image of project on the actual site map to the left

STRUCTURE DIMENSIONS

Height: 180ft
Length: 66ft
Width: 60ft



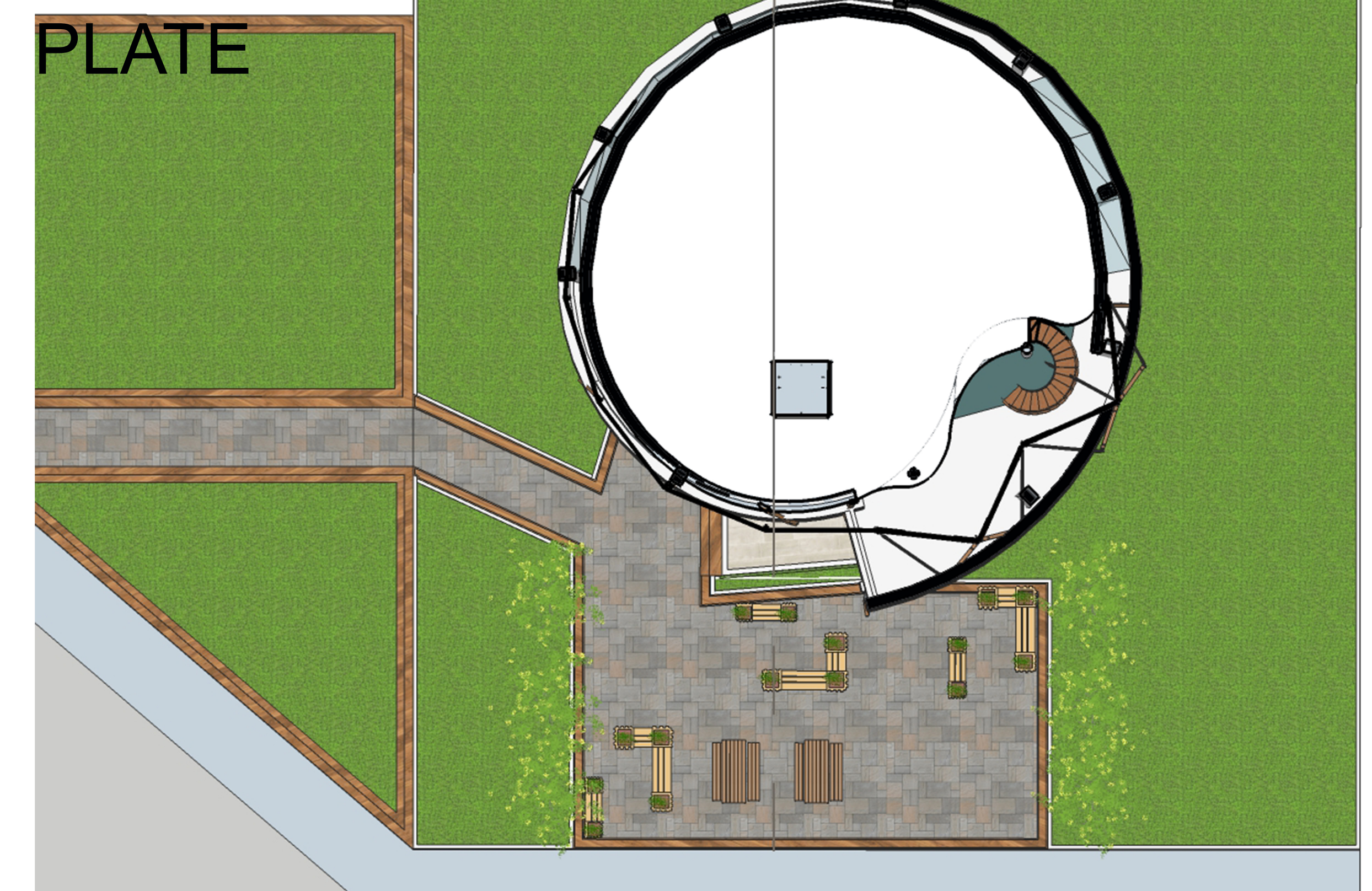
In an increasingly uncertain and divided time, for me Unity is what keeps mankind going, to be alive and thrive.

Therefore I think symbols such as this landmark beacon represent not only a wayfinding device of aesthetic and technological advancement, but equally unite us and celebrate our differences and similarities.

An engaging journey of changing exhibitions through lights, sounds, feel, touch, brings a sense of excitement, pride, belonging and familiarity, together with events space, and restaurant providing usable space with commanding views.

This will inspire the current, remember the past, and foster the future generation. The People's museum.

TYPICAL FLOOR PLATE



INTERIOR PERSPECTIVE

