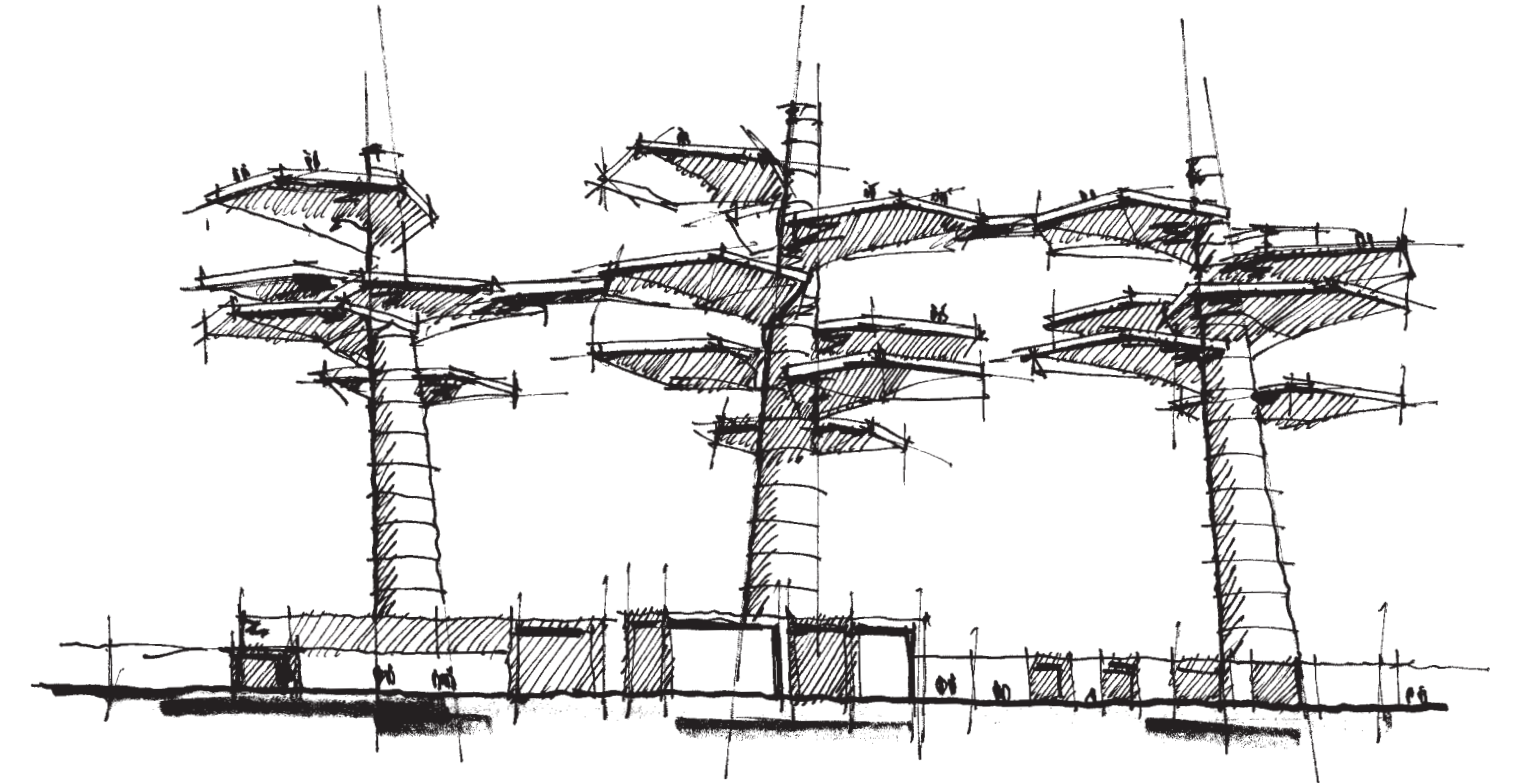
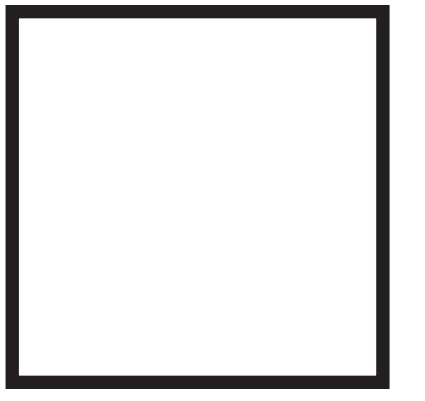


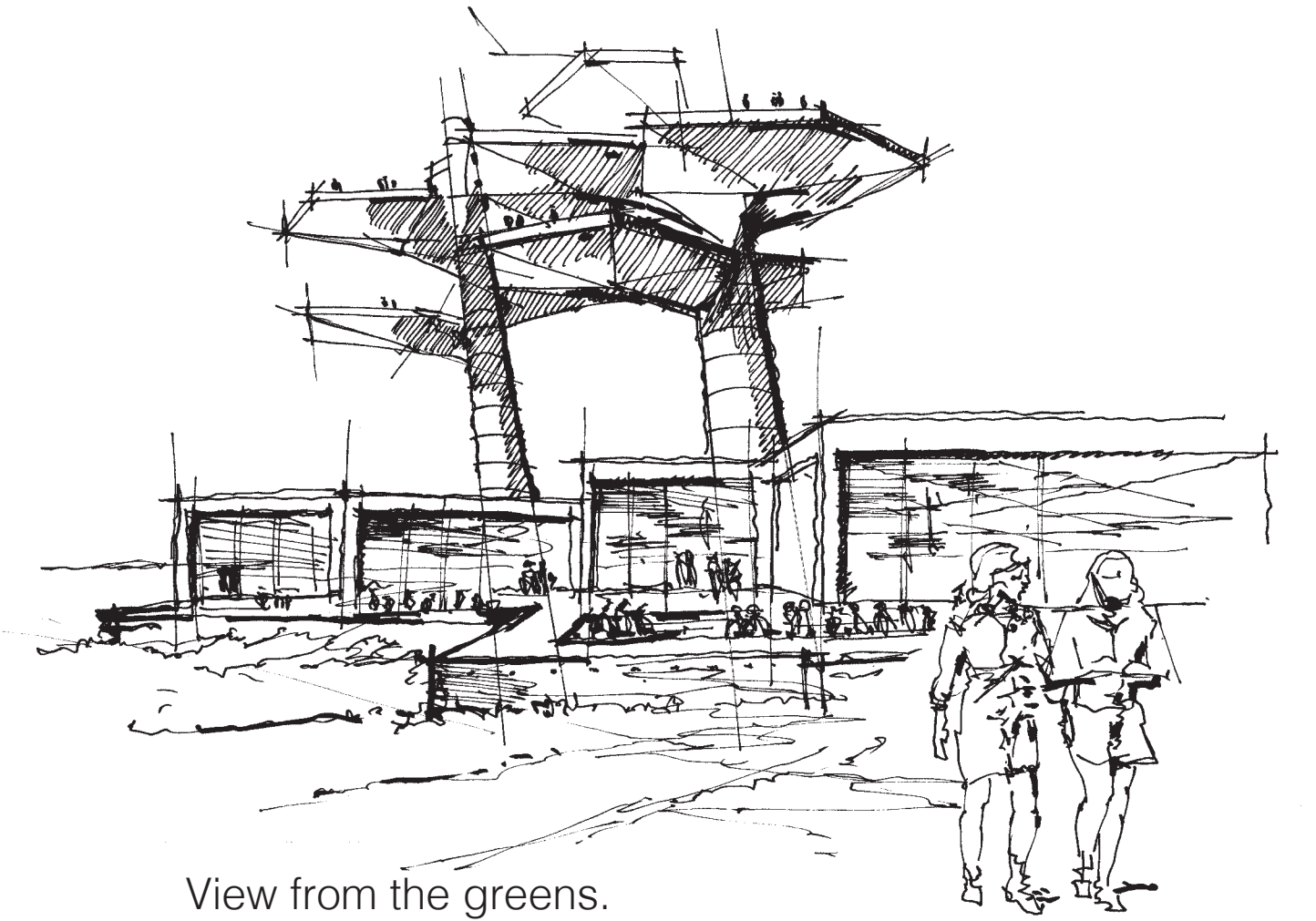
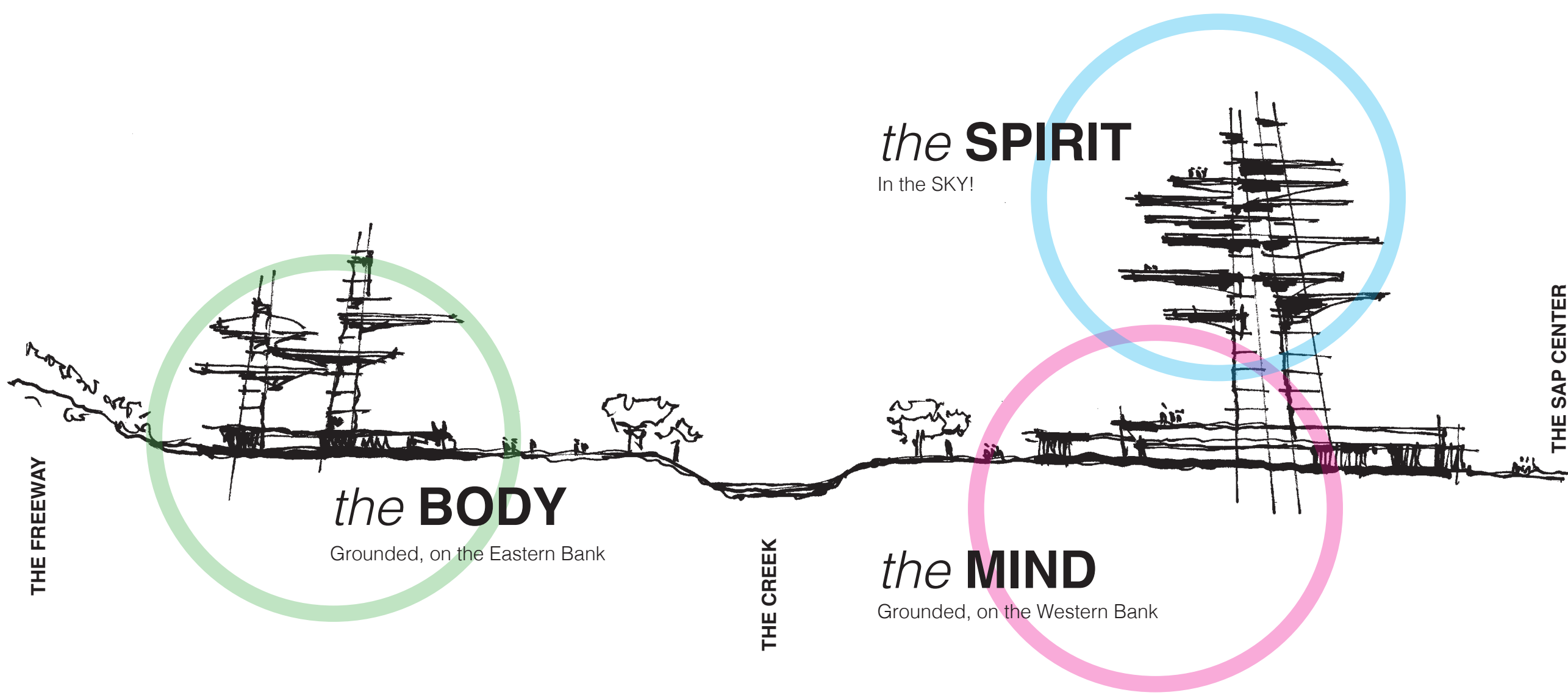


Monterey Cypress – *Hesperocyparis macrocarpa* - native to the nearby California coast, the tree is impressive by its resistance to the harsh coastal weather.

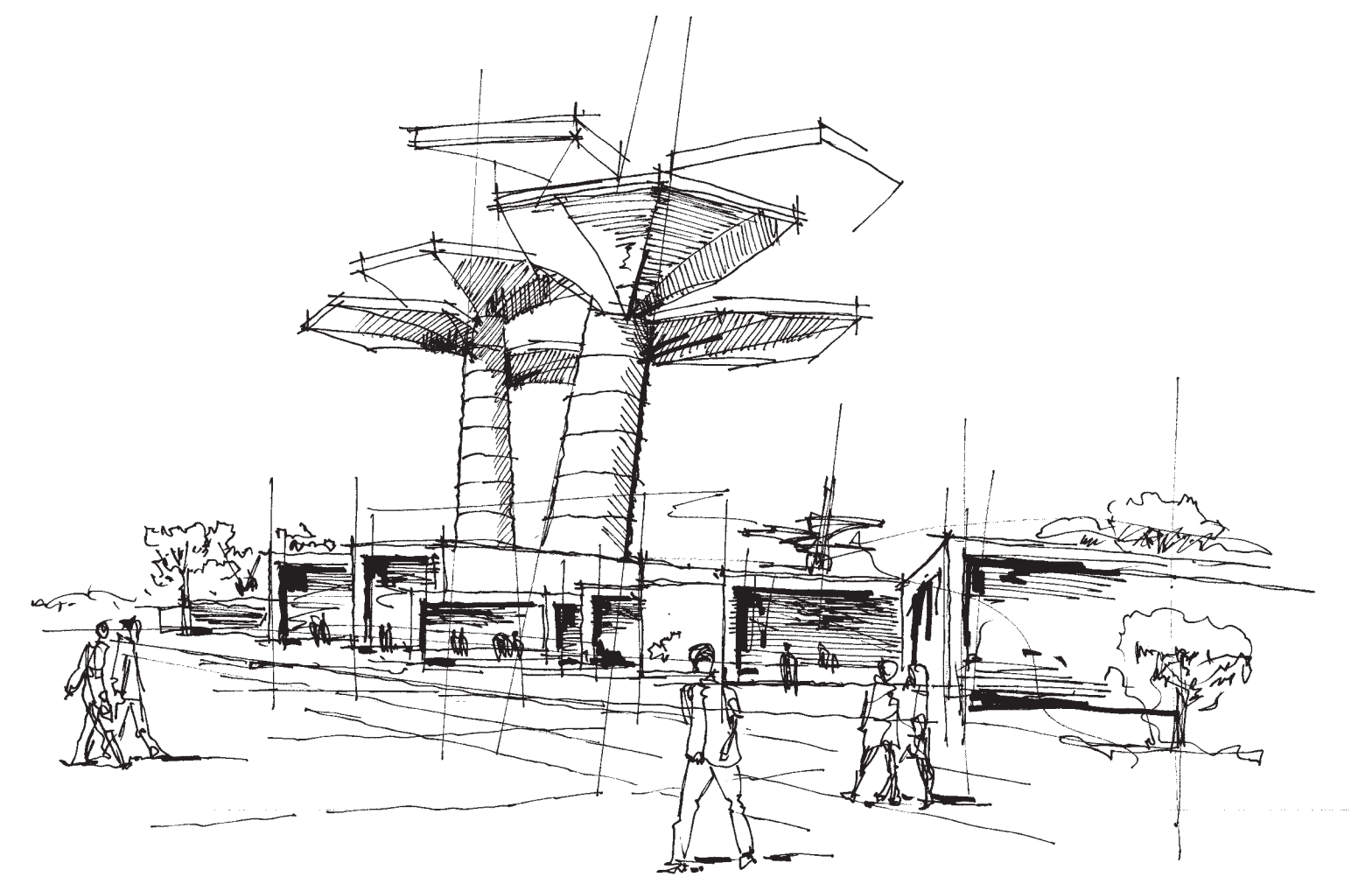
Image Source: The Library of Congress



Nature-inspired elements stand out in the rigid urban jungle
Distinctive silhouette against the SJ skyline.



View from the greens.
The outdoor amphiteaters



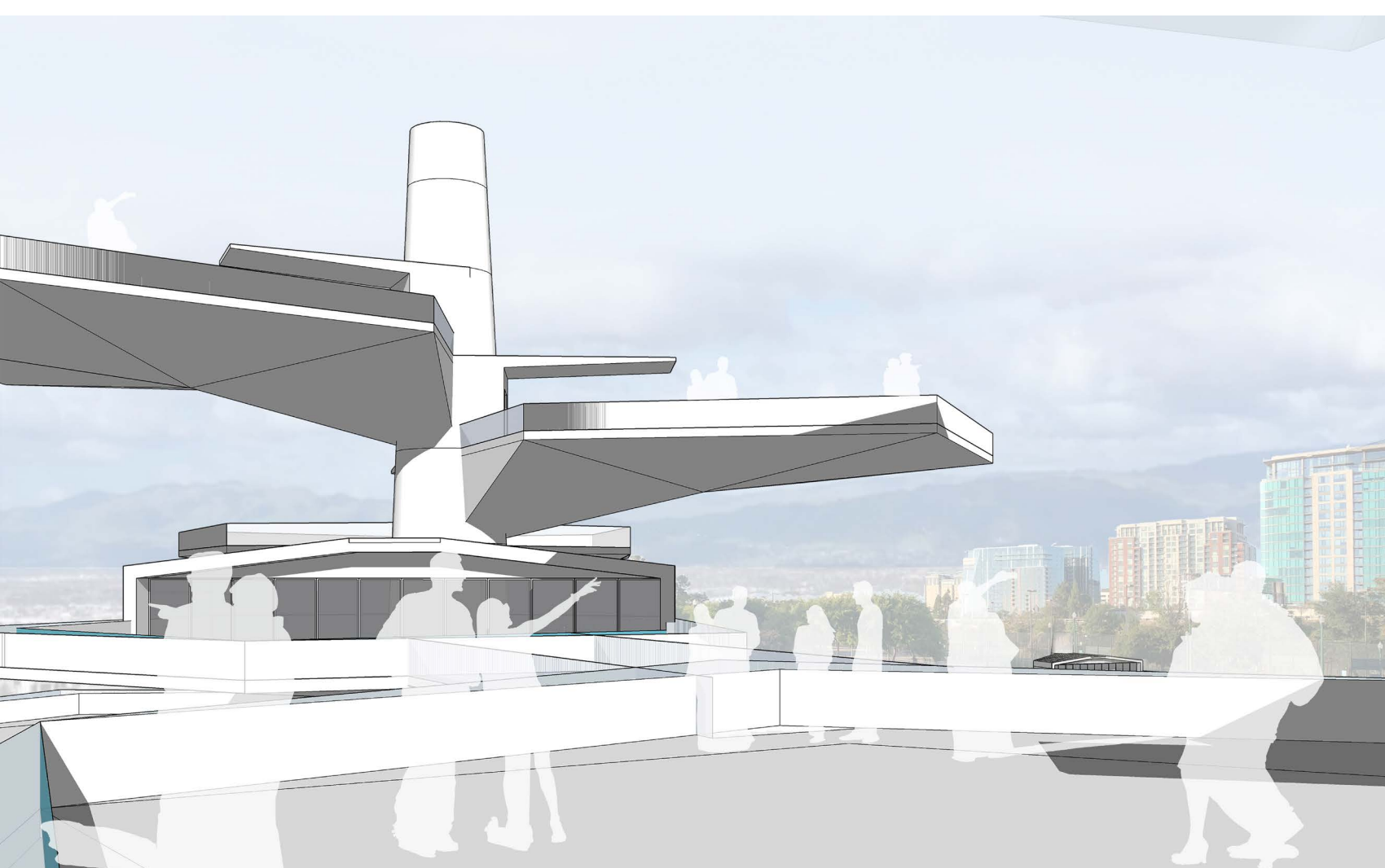
Gentle shading at street from the
The facade at the SAP Center.

TREES *and* ROOTS

The influx and success of the Silicon Valley only leave one question unanswered -

“Where are our roots?”

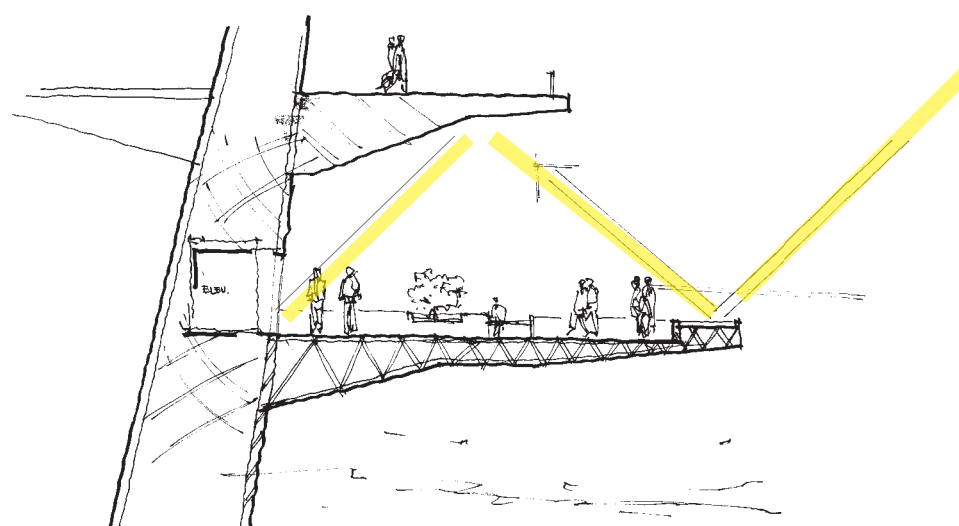
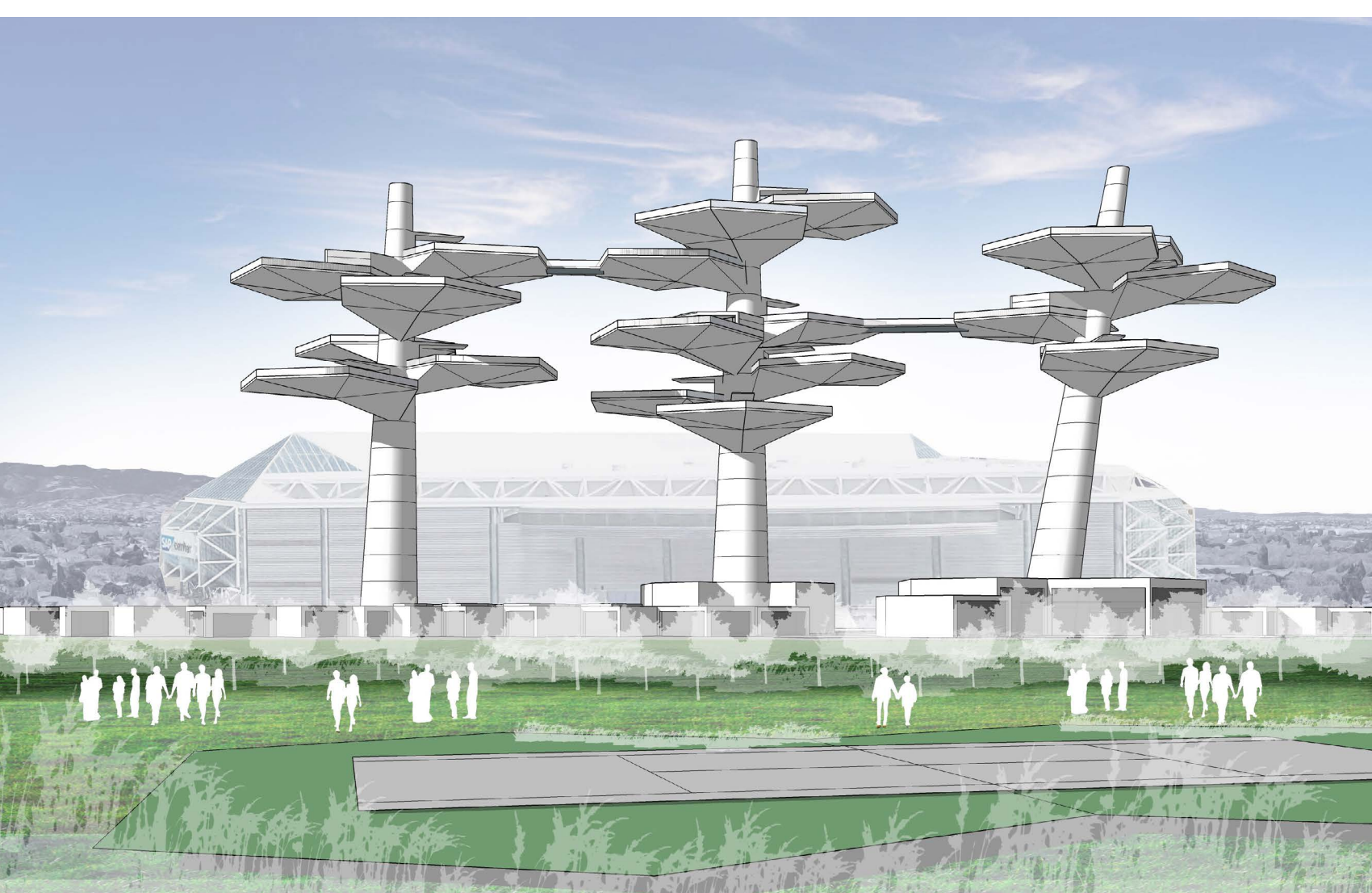
ENLARGED PARTIAL FLOOR PLAN -
ELEVATION 70'-180' (VARIES)
“the branches“



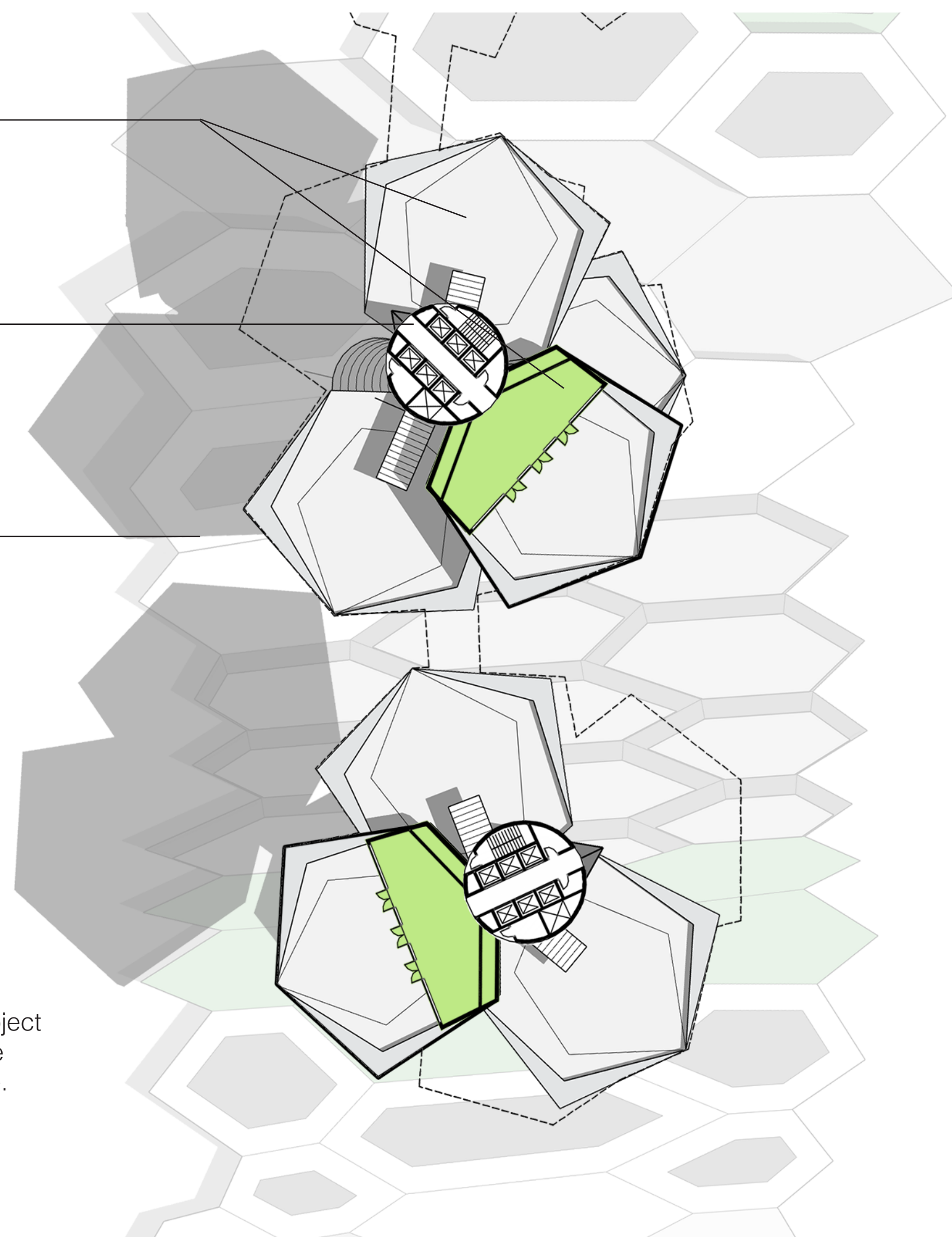
“Branches” serving as new real-estate for observation, relaxation, mindless time, as well as dining or entertaining.

“Trees” - the vertical program is structured in six different trees of alternating heights, with connecting bridges between them.

“Roots” - at ground level, the program includes a variety of functions in a flexible, root-like structure, modular and expandable to fit the changing needs.



Infinity pools at the edge of the deck project light to the underside of the volume above which reflects it back deep into the space.



Fitness Club - Indoor and outdoor terrace with a fitness program.

Sports Bar/Terrace - indoor/outdoor viewing

Sports Fields - Keep existing or address different sports.

the BODY

Grounded, on the Eastern Bank

Restaurants - fine food and wine tasting. All local.

Performing Arts - indoor and/or outdoor performance space, informal or programmed.

Mid-block connection - facilitates quick access to river and wildlife from street.

Lobby, Reception, Tourist info - The formal entries to the "trees". The size of the "cell" grows to accommodate a larger volume of visitors

The Cultural Component - space for exhibition, art gallery or permanent museum. Local art will be on display and local heritage will be promoted.

More ART! - Curated visiting exhibitions. A good place for a museum extension.

"Tree" entry and Administration - support staff and administrative offices.

GROUND LEVEL FLOOR PLAN
"the roots"

ABOVE GROUND FLOOR PLAN
ELEVATION 70-180'
"the branches"

the MIND

Grounded, on the Western Bank

"Branches" with different thematics for a mindless experience

"Trunks" are reserved for vertical circulation.

Entertain - A few of the branches can support entertaining - gourmet dining and relaxation, spa and infinity pool over the San Jose skyline.

A variety of connections - at different levels provide endless loops and hike paths, both vertical and horizontal

the SPIRIT

In the SKY!

*An icon for the mind, the body, and the spirit.
An icon for the Silicon Valley and the World*

TREES and ROOTS

Site activation - new paths and connect the site, while offering access to a variety of kiosks and vendors. New foot traffic would eventually expand to the nearby sites, serving as a catalyst for re-development of the area

Environmental justice. The proposal pushes for a comprehensive river cleanup, to potentially expand up and down the river to the SF Bay.

Net Zero - clever positioning of the "trees" help shade the building below, reducing the cooling cost, in addition to providing a surface for solar.

"Trees and Roots" - the predominant theme, grounded in nature and distinctive aesthetics

