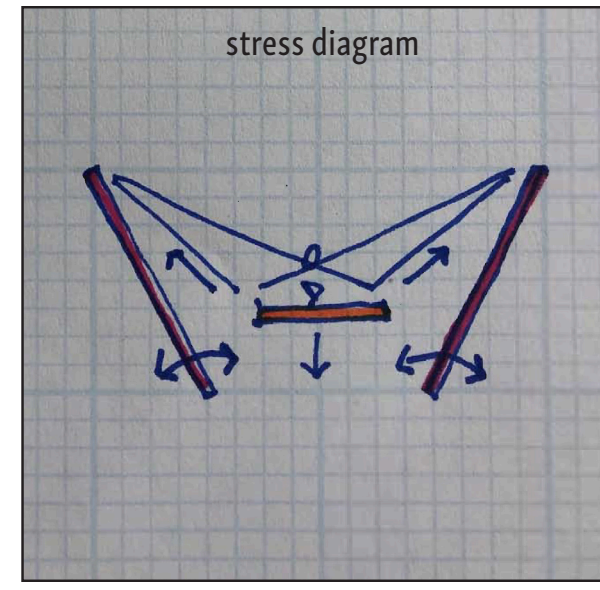


harmonic convergence

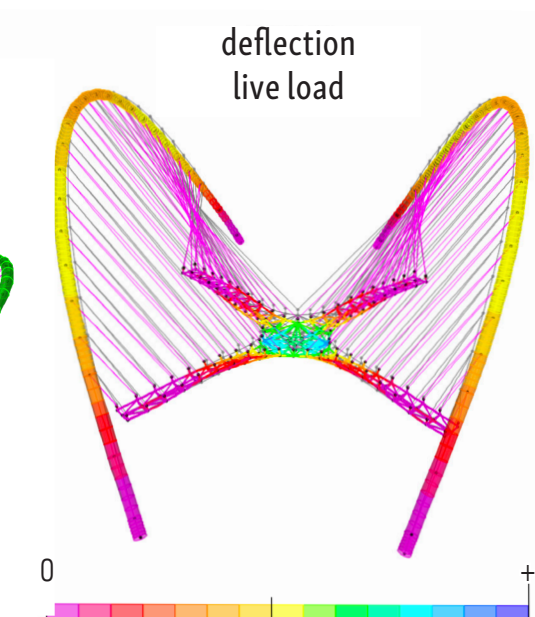
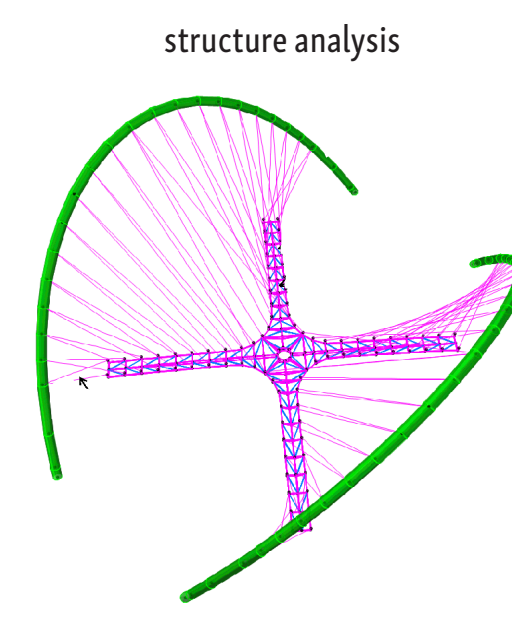
The park needs fortification of its desire lines — routes connecting pedestrians and bicyclists across the rivers and through the park. And it needs programs to become an inclusionary oasis attracting both visitors and San Joseans. We propose a two-span bridge that enhances connectivity and serves as the park's new heart as a central rendezvous, new paths, and new programs throughout.

1. Start with a network of scenic paths connecting adjacent streets, bike paths, and walkways. The double-span Harmonic Bridge is the centerpiece, supported by two canted, steel harp structures. Its walkway is cross-laminated timber (CLT).

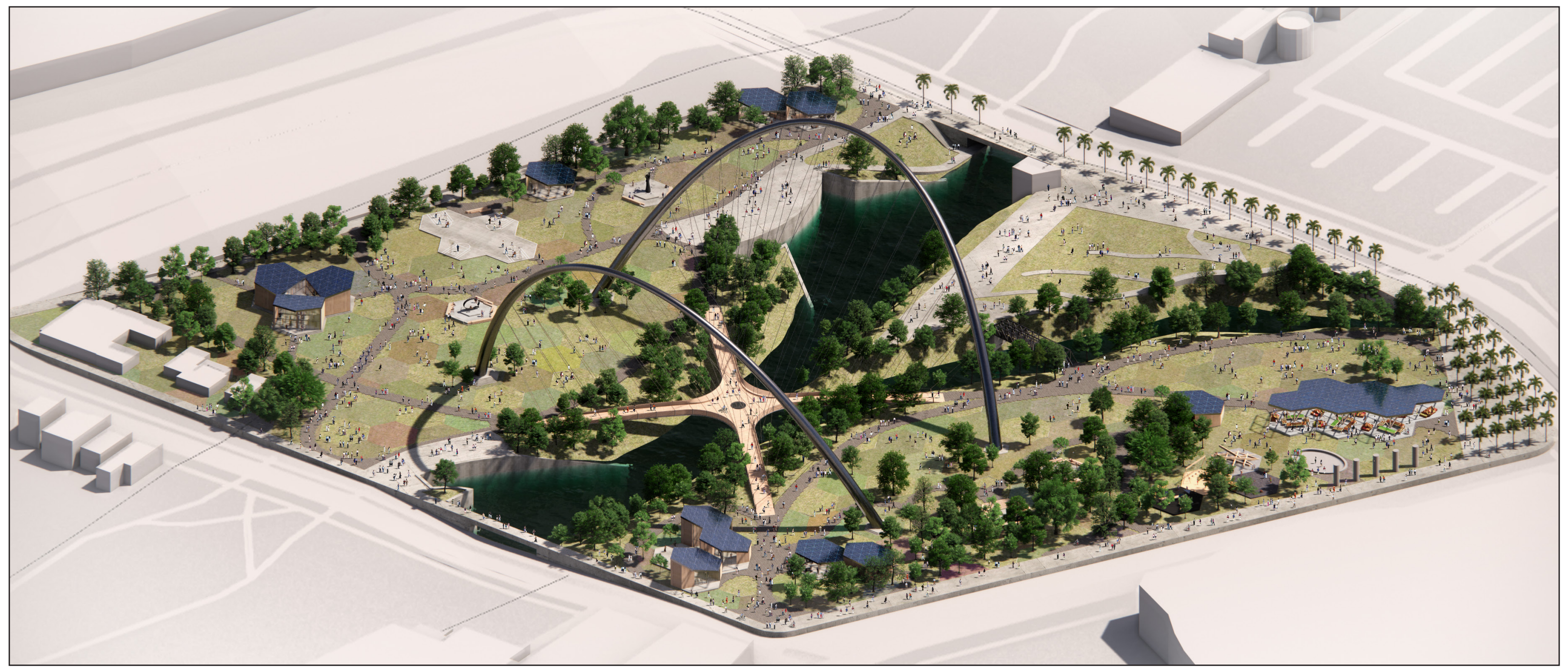
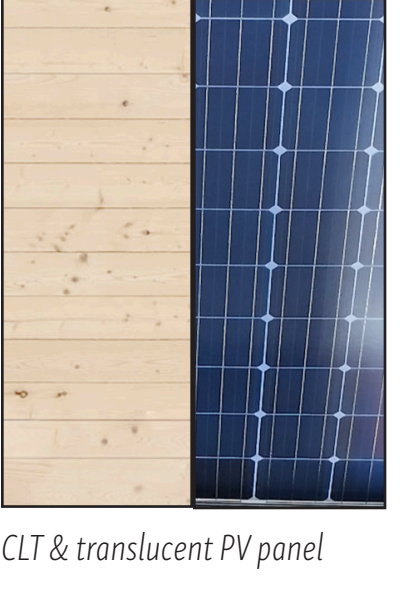
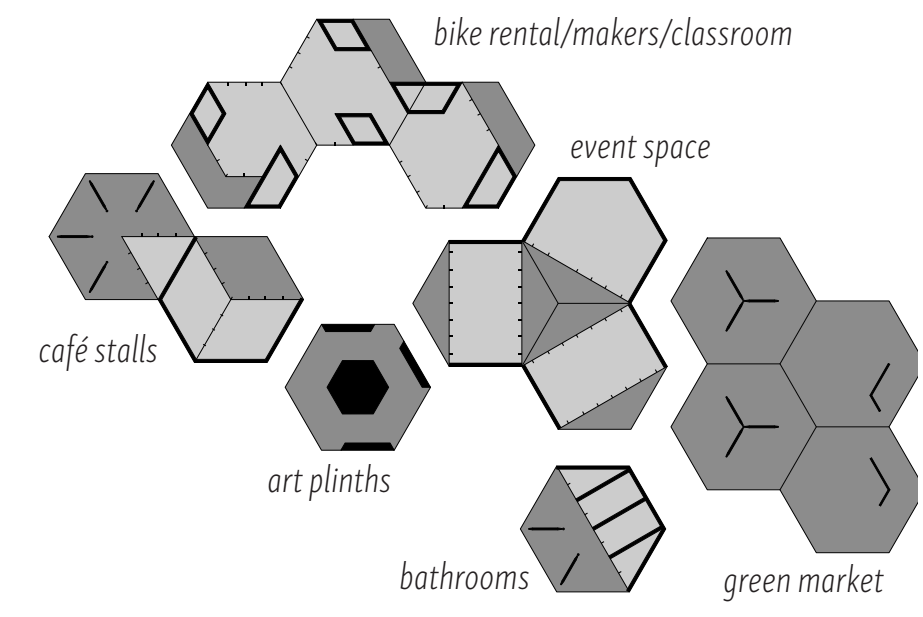
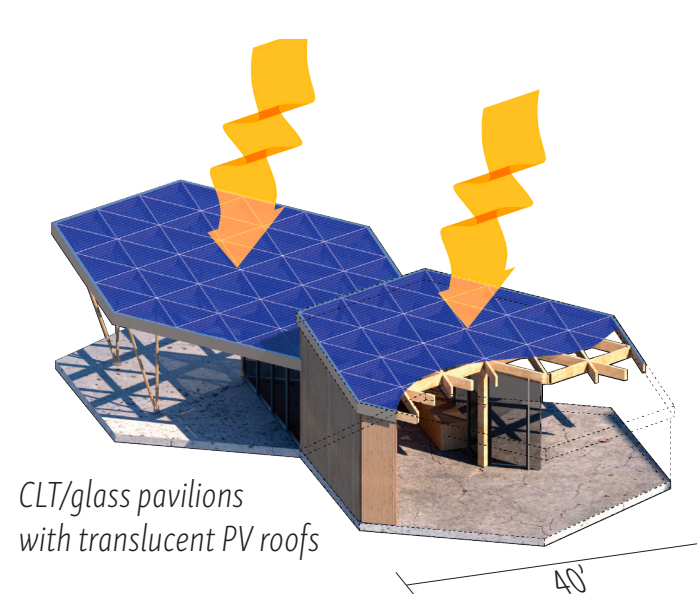
2. Overlay a hexagonal grid where each cell is 40' across. The grid defines sites for modular growth over years to come. Programs grow out of these modules. Their roofs are translucent photovoltaic panels that generate all required power for the park. Like sprouting plants, they arise, absorb solar energy, and blossom. Initial programs might include a green market, a community event space, a bike rental/maker/classroom space, a café stalls, bathrooms, and a public art program. The modular pavilions are built of cross-laminated timber (CLT), glu-lam beams, and glass. Each pavilion occupies one or more hex modules with walls that follow the geometry of the hexes.



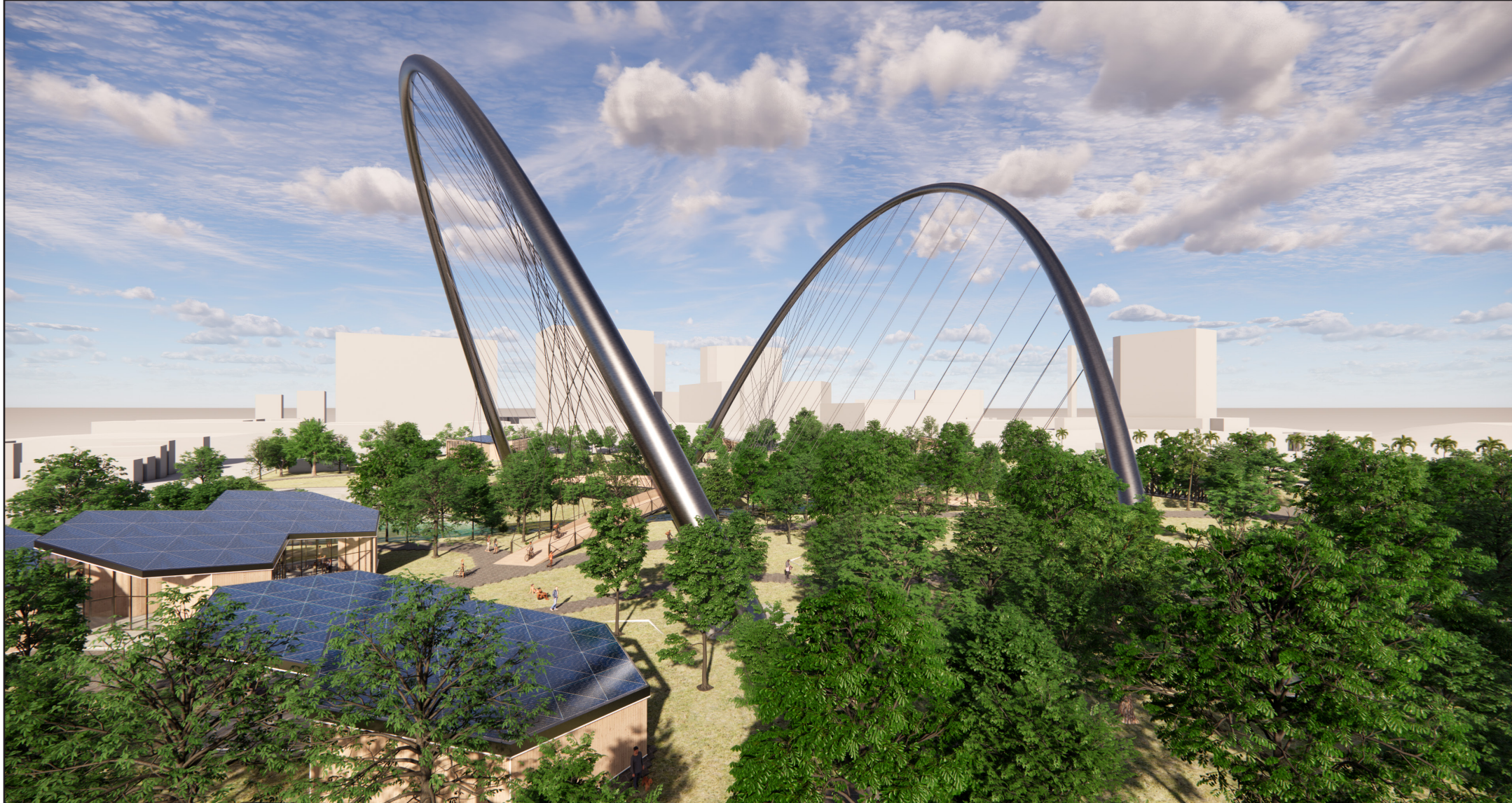
pre-tension roadway against pre-tension from arches to create a condition where live load acts against internal stresses and dampers to control movement and vibrations.



CLT & stone pavers



Harmonic convergence. Two harps support a 2-span bridge, the heart of a network of pedestrian and bike paths. The hexagonal grid, evident in the landscaping and pavilions that emerge from it, serves as a modular medium for the future growth of the park. Features will be added, and the module assures a continuity of scale and visual language. It promotes multiple connection points (a square grid, which connects on only 4 sides). The roofs are critical: they collect solar energy and store it to provide power for the park's operation. The conversion of this energy into light, events, projects, and sustenance, along with visitors' energy, will help revitalize downtown.



Paths and pavilions. The bridge anchors the network of paths through the park as a visual landmark and a literal crossroads. Pavilions emerge from the hexagonal grid overlaid on the site. Their roofs of translucent photovoltaic panels generate all power needed for the pavilions and the landscape lighting. The park celebrates harmonic convergence, where San Joseans and visitors explore a world-within-a-world, sustainably built and operating.



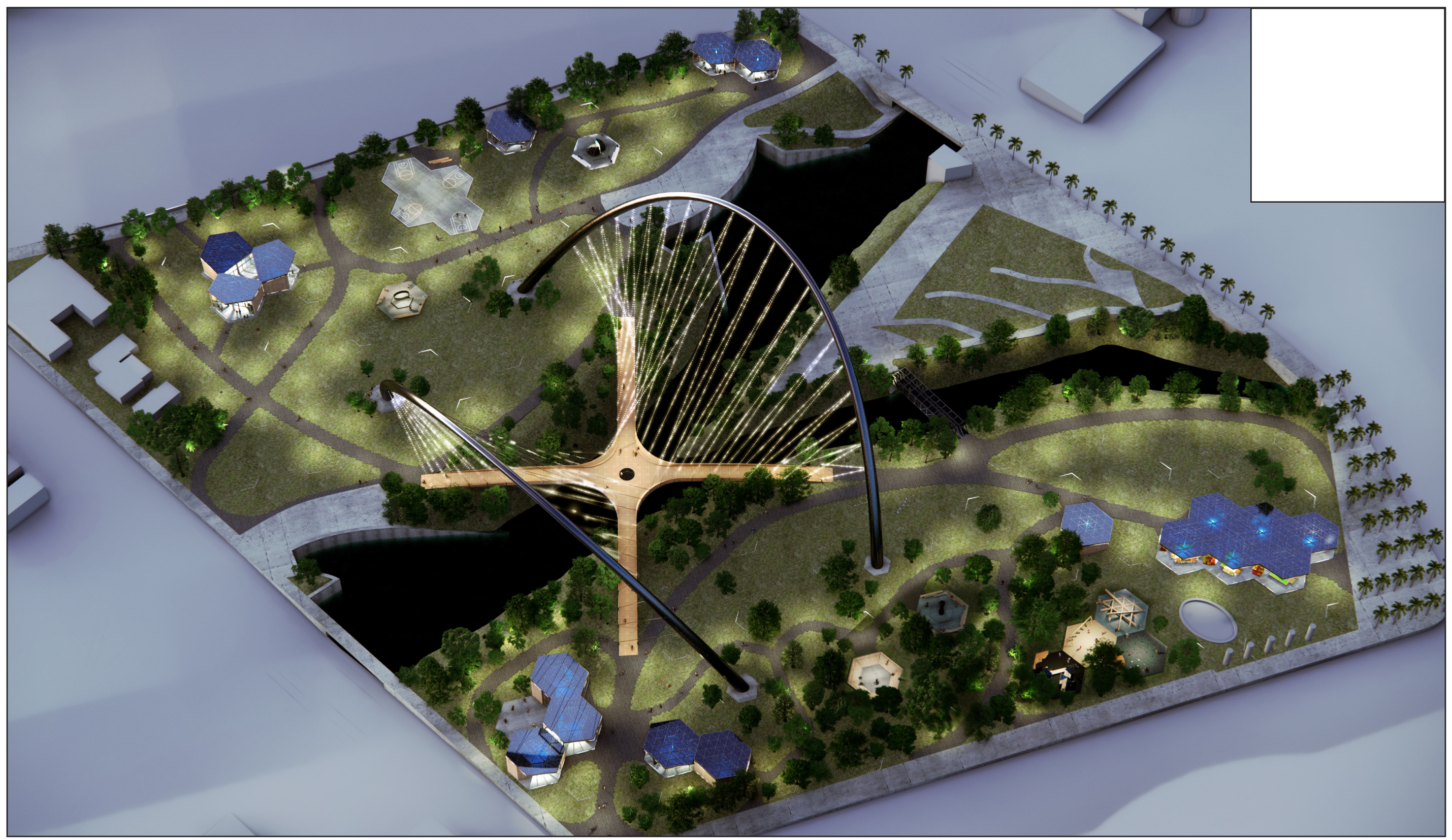
Recreation and tranquility, connected. The unique basketball setup, a 4-way crossroads of half-courts, reached by the bridge or the path from the road. At every time of day and from each angle the bridge structure looks different in the light.



Bridge and events. The events pavilion accommodates 1-3 events of different scales, day or night. As the sun begins to set, people stroll in to their community meetings, their lectures, their parties. The lights on the bridge come on at dusk. When they leave, they walk over the bridge, pausing to take in the display. This is a multidimensional space, given over to the public, for everyone. It is a place for everyone to spend time in a place where art and nature and discovery and creativity and pleasure and contact with other people one does not know are most highly valued.



Site plan. The park is at a crossroads for fast-developing downtown, straddling the river. The bridge unifies the two sides of the park, connecting the pedestrian and bike paths to enable varied itineraries. The hexagonal grid nurtures the park, sprouting programs that draw visitors.



Aerial view at night. The park has a second life in the evenings. The bridge transforms into a work of light art by an artist on the design team which ripples through the surrounding landscape. The spectacle is visible from a distance but most immersive when viewed from the bridge itself. This is a great work of public art that everyone can visit and leave with her consciousness elevated. There will be community meetings and perhaps weddings in the events pavilion.



Amphitheater. One of the hex programs is a simple amphitheater, suitable for performances, speeches, or just contemplation.



Cafés. There are two café pavilions in the park, at opposite corners. Each one features three different stands serving a variety of creative cuisines fashioned from local sources. Food is more than sustenance: it is experiential and transformative. These are also social centers.



Playground and farmers' market. Replace the existing, tired playground with a new one focused on exploration and immediate experience. The new farmers' market is a large canopy where locally produced food is sold.



Bike rental / Bike kitchen / Maker space / Classroom. Renting bikes to get around downtown and featuring weekend DIY bike repair sessions. Attached to a maker classroom with equipment to learn building, technology, and river ecology, hosted by a local nonprofit.



Event space. A flexible pavilion of three spaces around a courtyard. Use the spaces individually or combine via the court. Holding community meetings, rented for parties, used for enrichment classes.



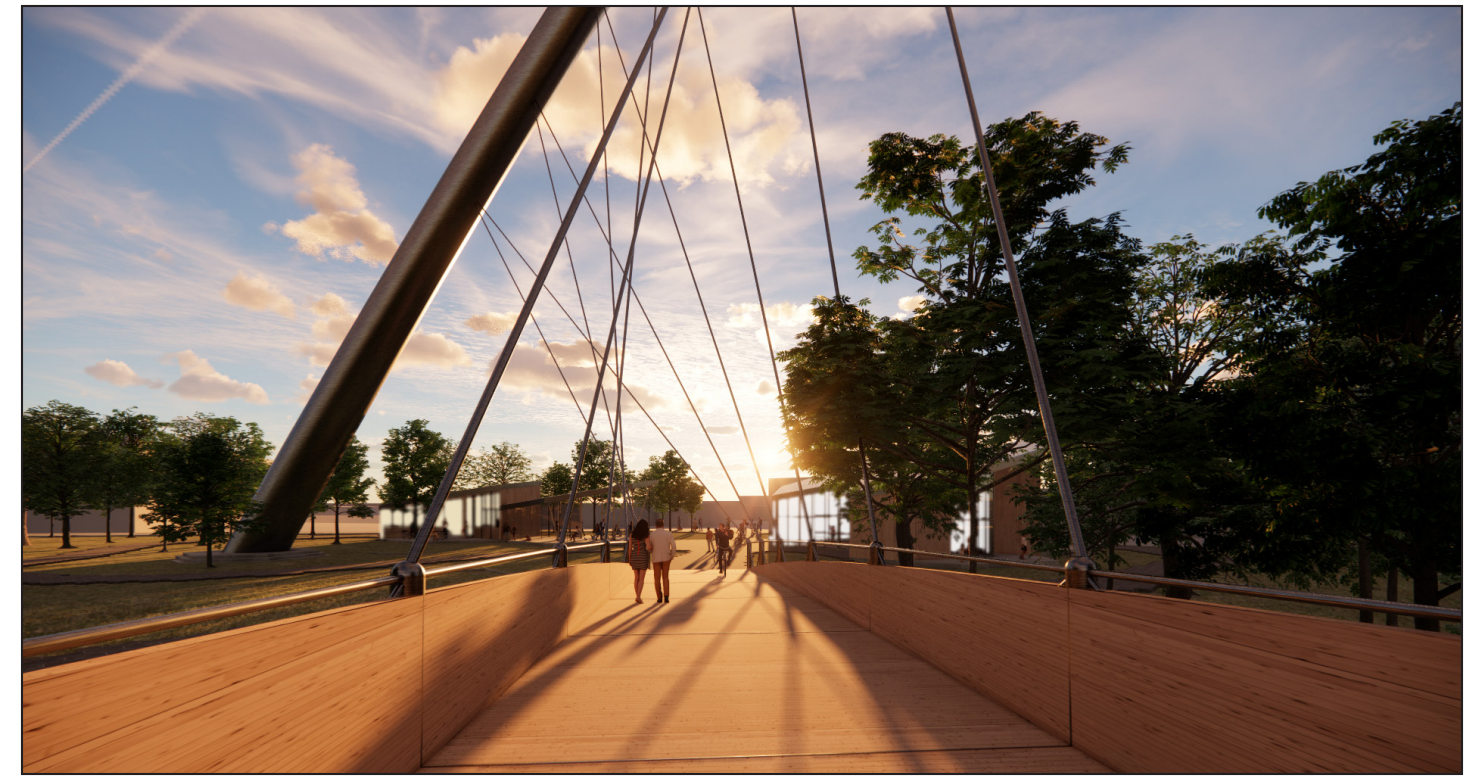
Night life. Some of the pavilions, like the cafés, are open in the evenings, supporting the night life of the park. Park of the downtown resurgence, visitors come for the light display, the unique environment, and the inventive cuisines.



Art plinths. Concrete pads throughout the park demarcate sites for the public art program. Each site features a different configuration of timber benches for rest and contemplation. Each pad is wired for power. Exhibits change several times per year.



The Intersection. The center of the bridge is an exciting place, converging above the river (which is itself converging). It manages bike and pedestrian traffic around the center, which is a grated port to the river below. Built-in benches encourage reflection and recline to look up at the harps above.



The bridge and the paths. A plethora of paths weave around the new zones. More connections and scenic opportunities encourage more walking, more biking. The bridge connects the four corners to the center of the river, connecting the city to the ancient forces that have shaped the landscape.



The intersection. The center of the bridge is the epicenter of the park. The twin confluence, along with the confluence of the rivers. At this crossroads we encounter many people on their own journeys. We pause to be mindful of the river that runs through San José. In the evenings, it becomes even more special, a destination. The supporting cables of the bridge — the strings of the harp — carry LED nodes every 12". Programmed as a 200' tall piece of art by the artist on the design team, the LEDs trace patterns, turning the entire bridge into a canvas of light. From the center, ringed with benches encouraging visitors to sit in a reclining position, we look up at the cables surrounding us and feel our consciousness transformed. In the center of the deck is an oculus fitted with a steel grating. Every half hour mist emerges from the oculus and is also illuminated by programmed light.