

# WE GROW IDEAS

**WE GROW IDEAS**  
200 years ago Santa Clara valley grew fruits. Today we grow ideas. A true place for ideas to become reality. Many entrepreneurs all around the globe plant their ideas in this valley. They come with the seeds searching for Nutrient-rich soil. Ideas are like plants, you put the seeds in the ground of your mind and nurture them regularly until they ready to make their way into the world. Valley is a connecting link between different times and peoples. In the past, present, and future, the valley was and will be the symbol of this place.

**SCULPTURE ARCHITECTURE LANDSCAPE**  
The sculpture is growing from the earth, from the landscape. The soft transition between landscape, sculpture, and architecture space. It's forming a strong recognizable valley symbol. It is offering protection from noise and air pollution a pleasant place for visitors and the community. It is not only a symbol and structure but a living organism.



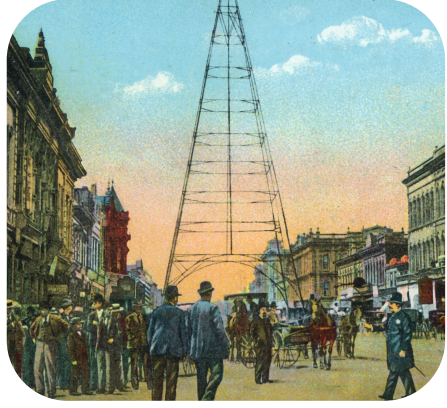
## VALLEY OF IDEAS

Timetabel of Silicon Valley



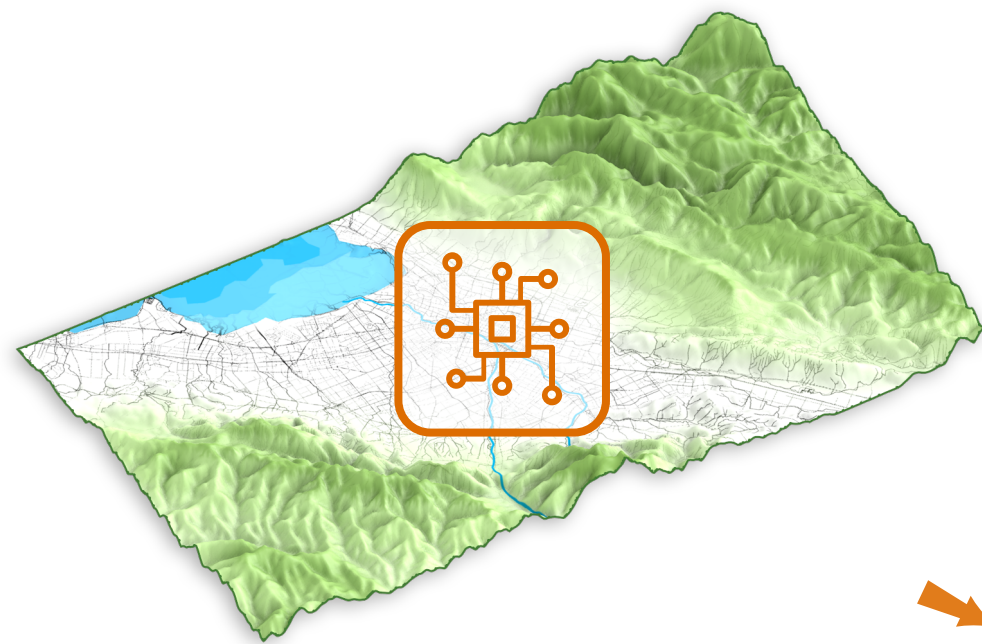
### 1800s SANTA CLARA VALLEY

Originally, the Santa Clara Valley was known by a different name – the "Valley of Heart's Delight." It was famous for its orchards and flowers, with prunes as the major export. It was a land of 300,000 Trees.



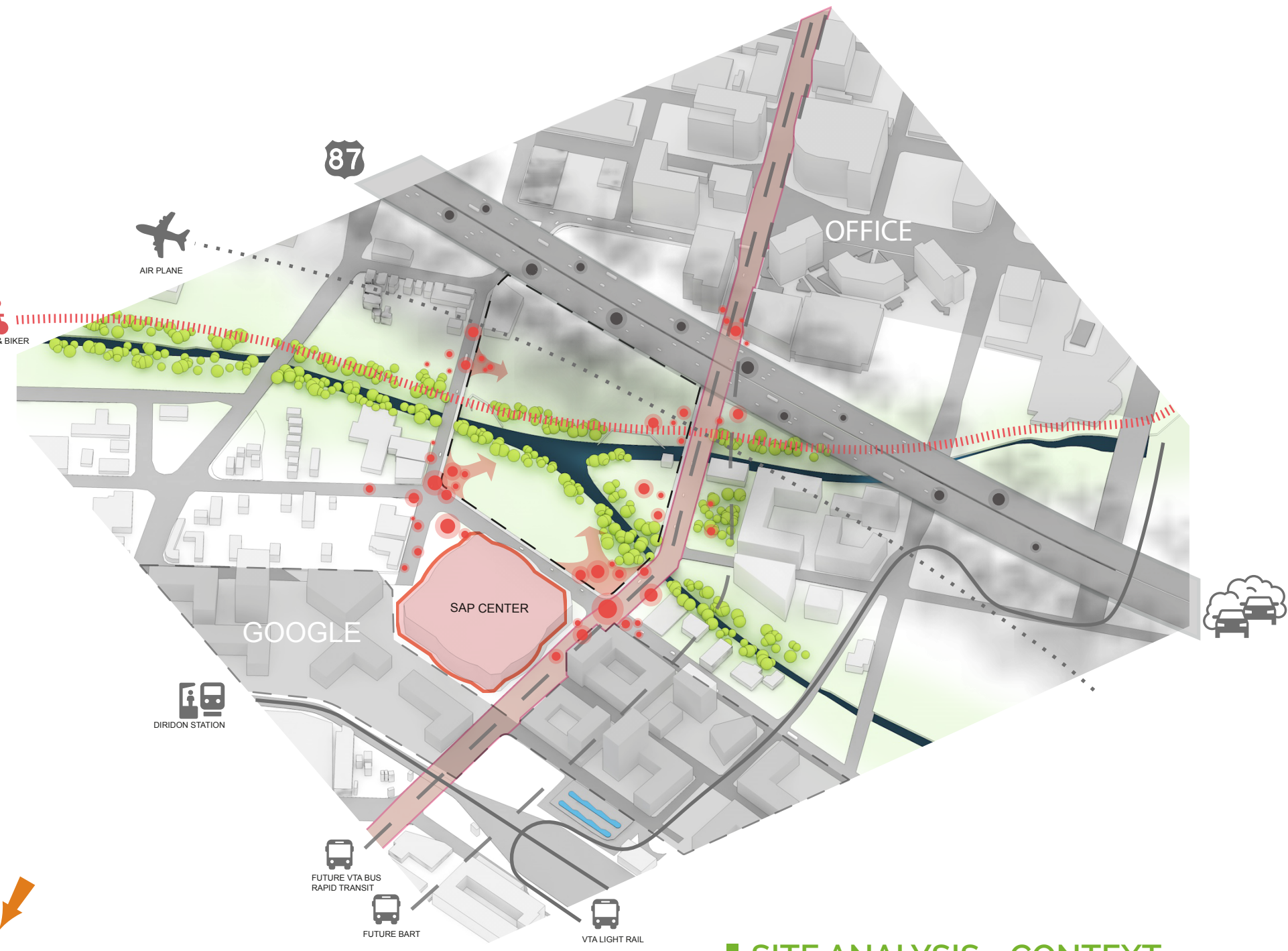
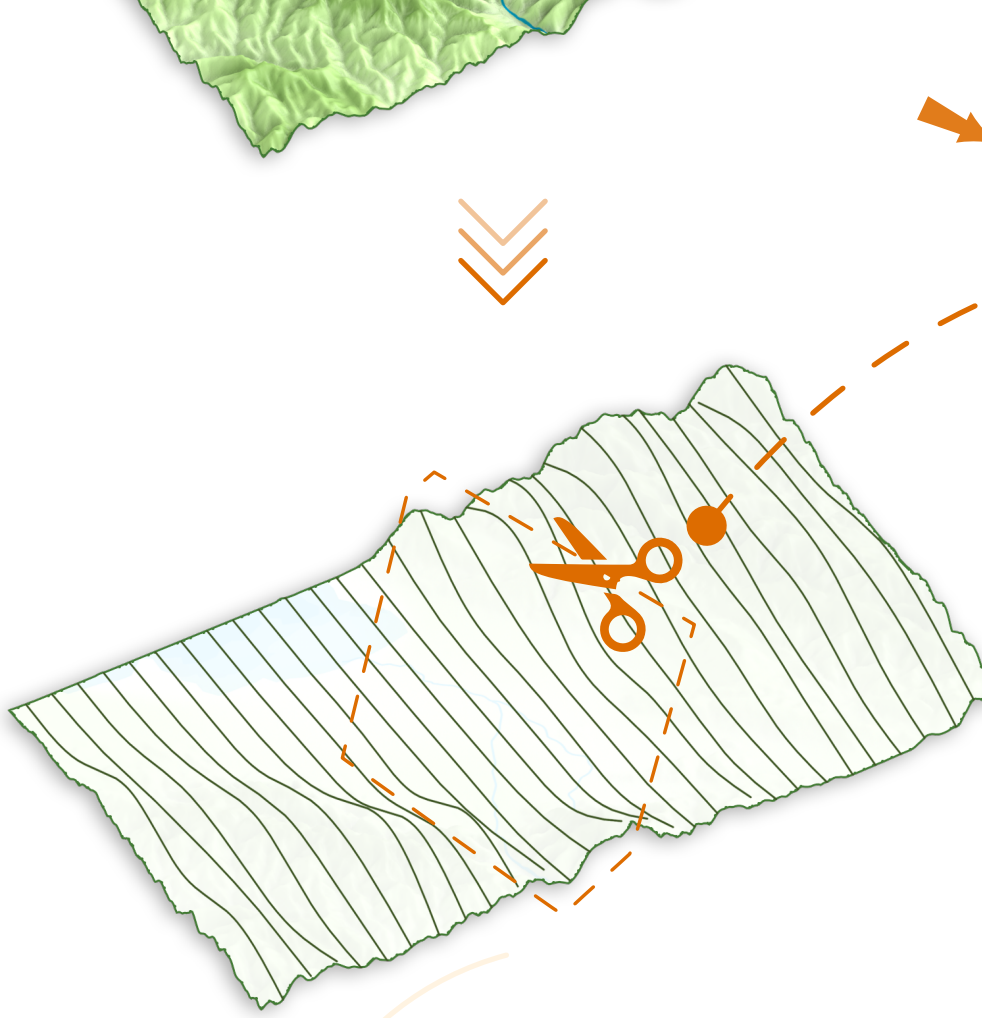
### 1900s SILICON VALLEY

But since the mid-1800s, the seeds had been planted for the valley's later rebirth as a hub of technology.



### 2000s VALLEY OF IDEAS

Before we used to grow fruits, today we grow ideas in the valley! It isn't just a spot on a map. It's a brand—a global symbol of enduring innovation!!!



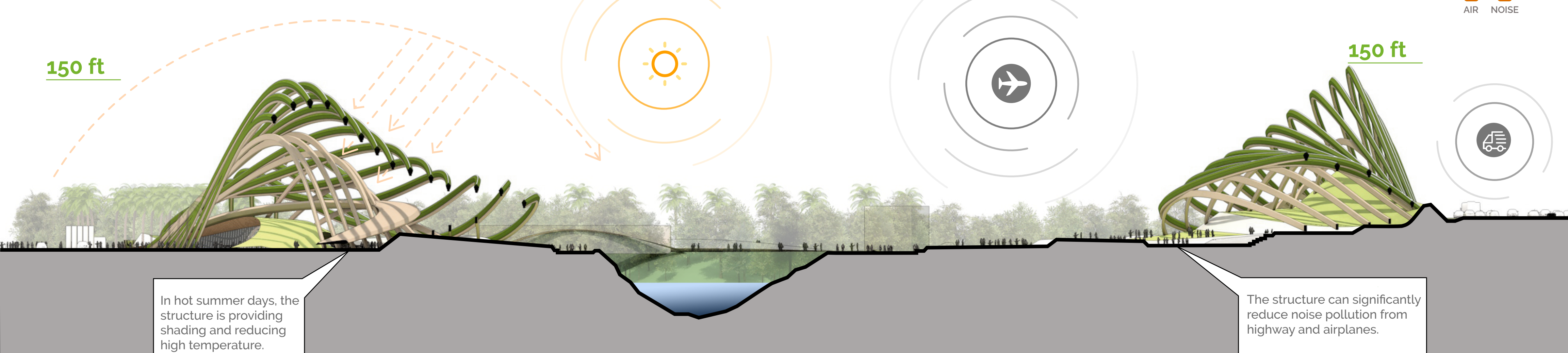
**SITE ANALYSIS - CONTEXT**  
Air and noise pollution level is too high.

BEFORE  
POLLUTION AIR NOISE

AFTER  
POLLUTION AIR NOISE

150 ft

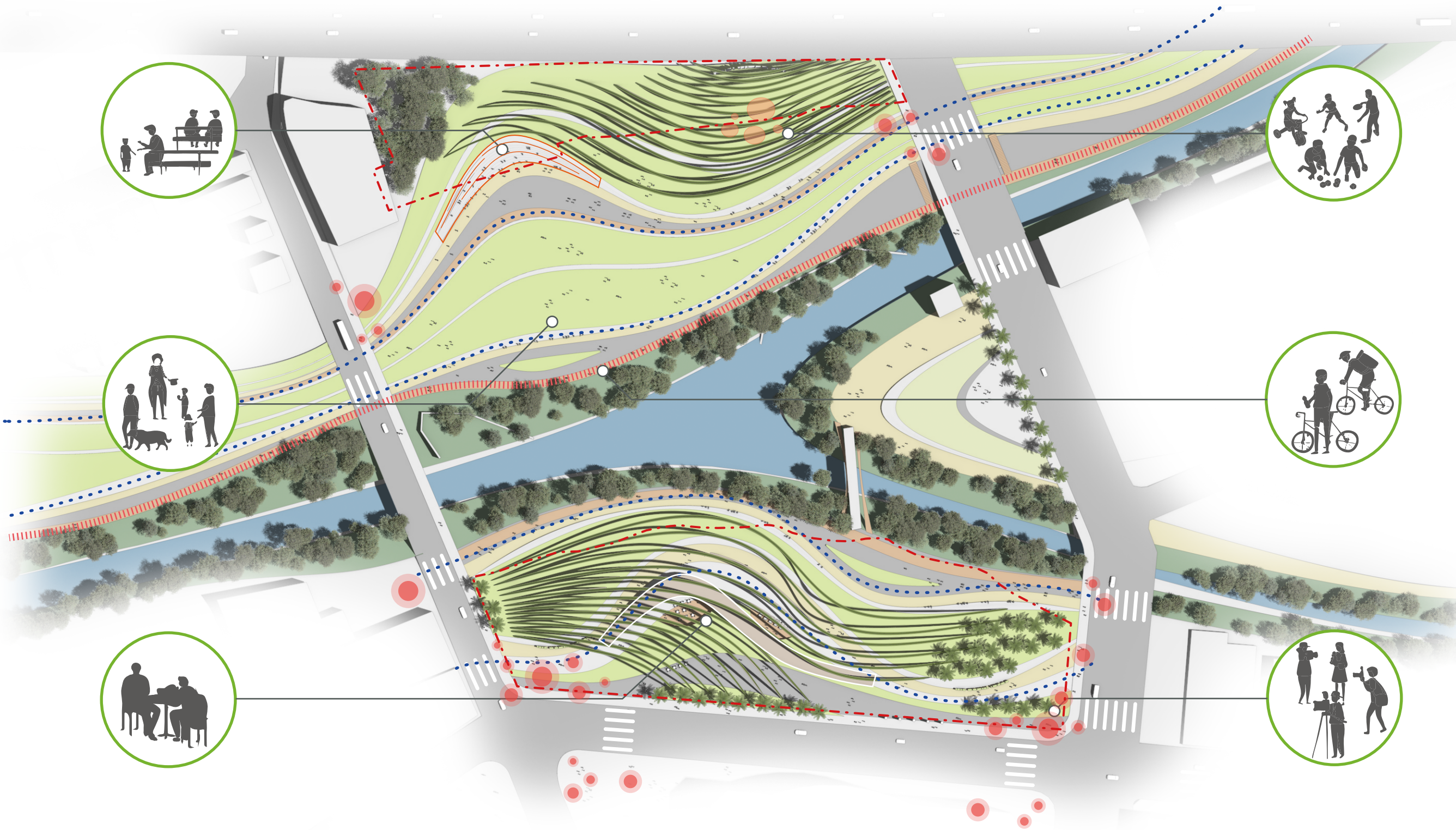
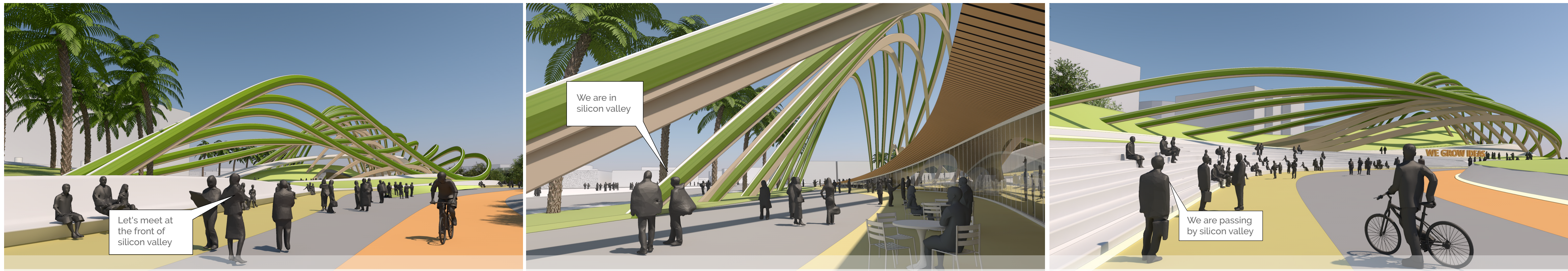
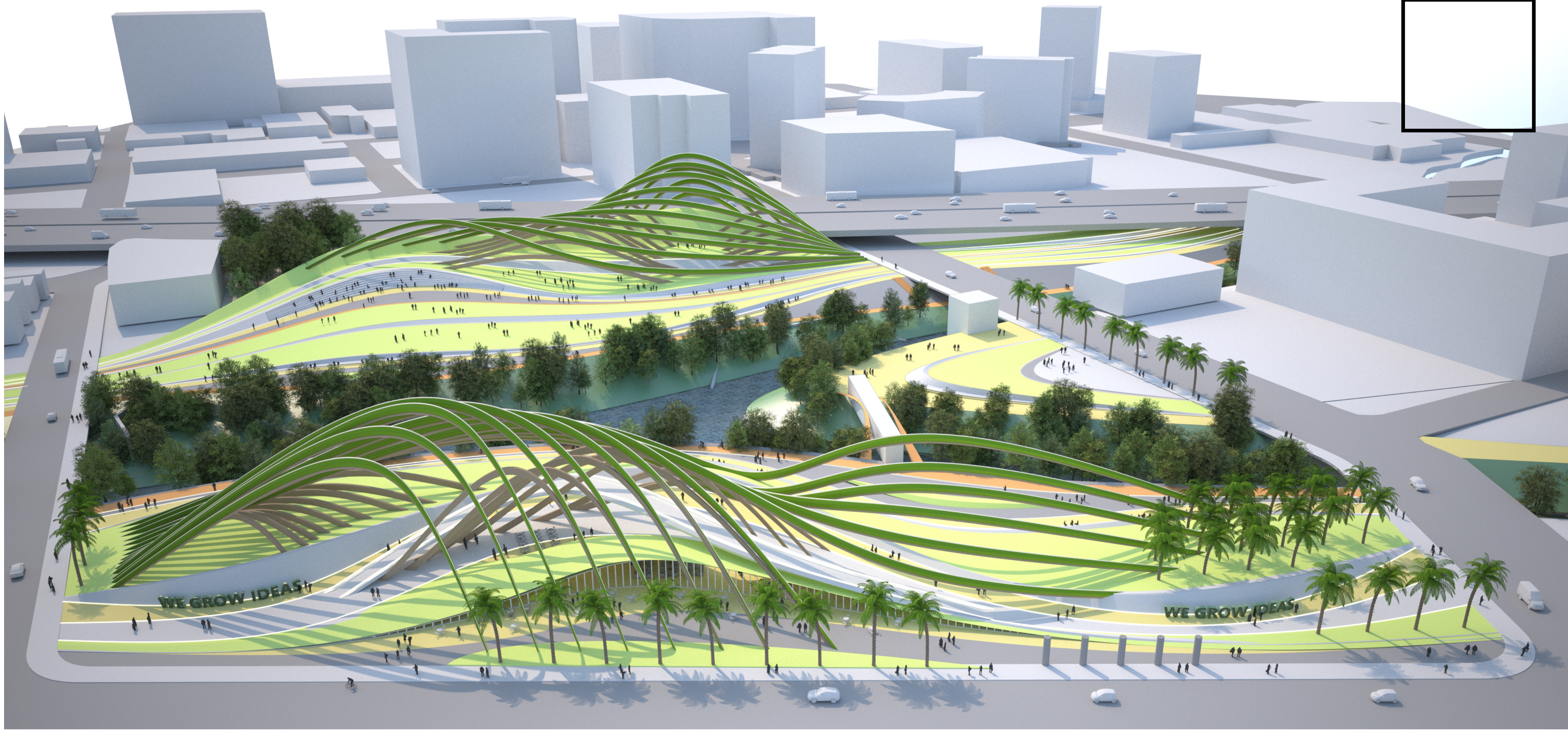
150 ft



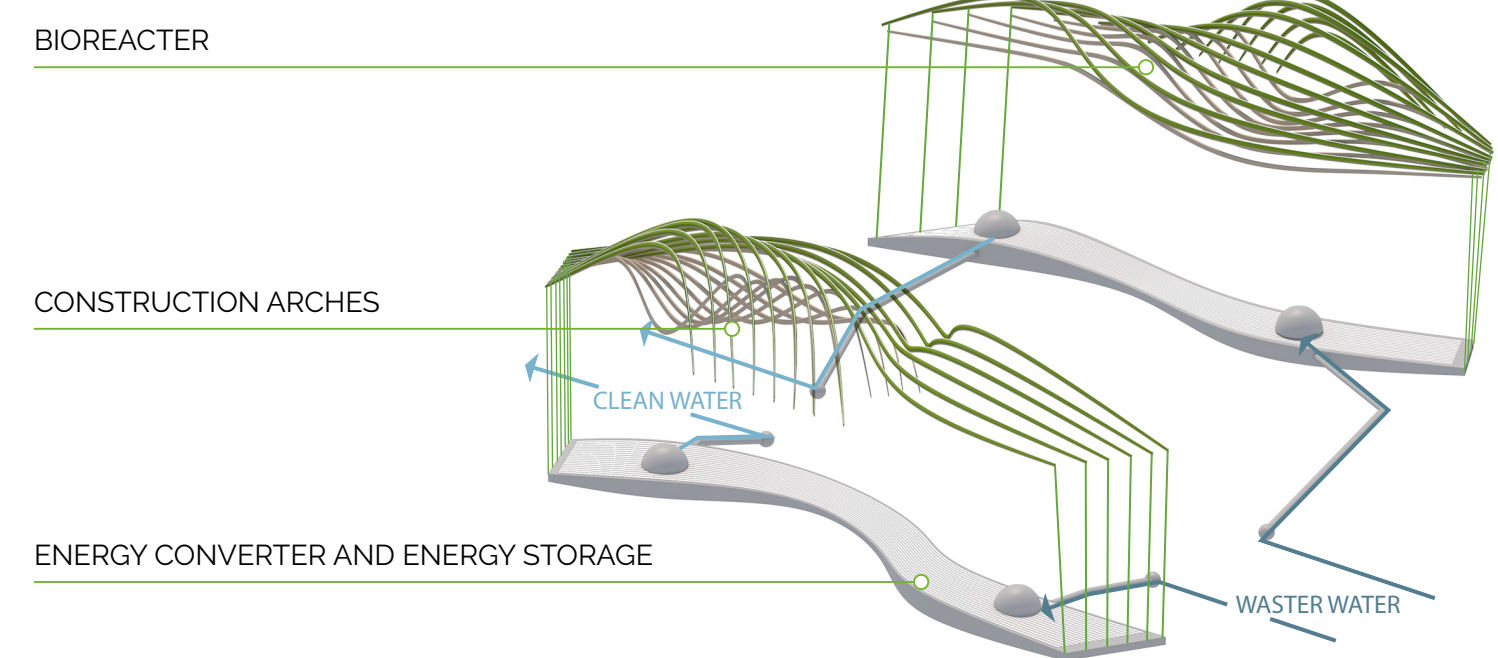
In hot summer days, the structure is providing shading and reducing high temperature.

The structure can significantly reduce noise pollution from highway and airplanes.

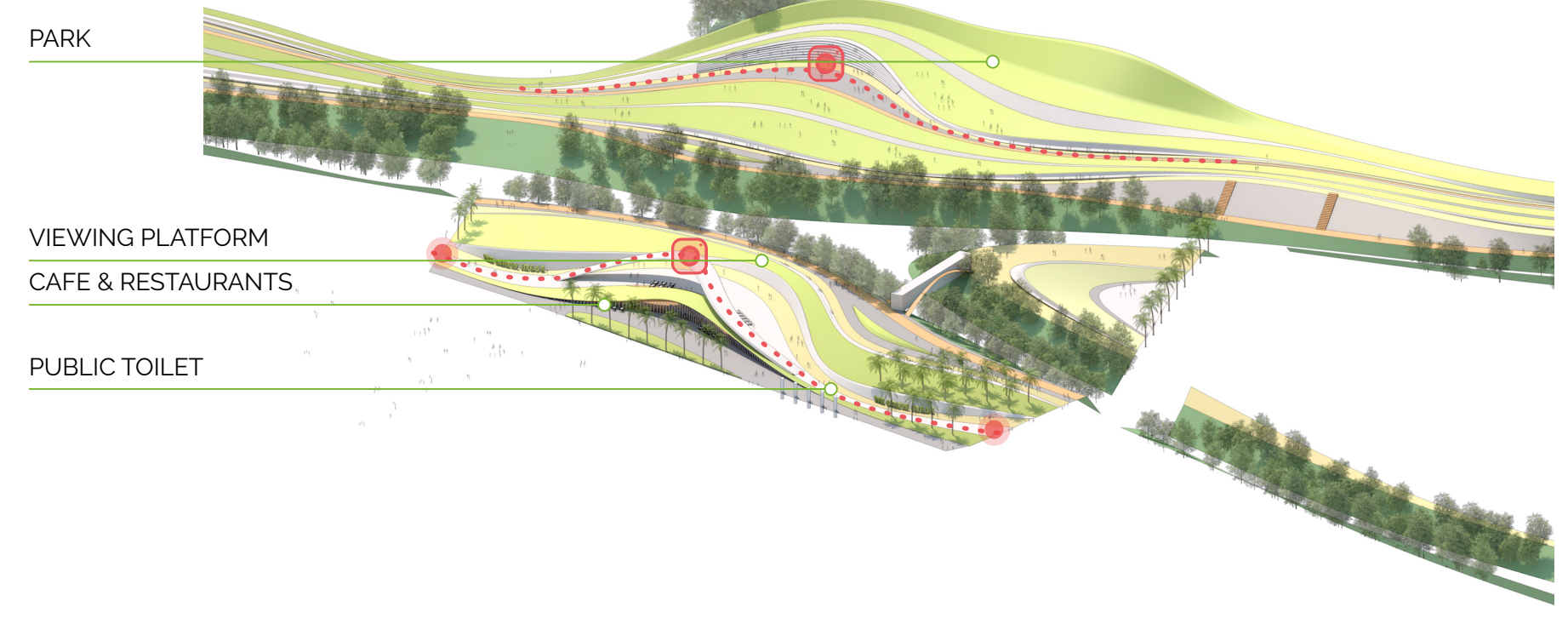




**CONSTRUCTION**



**LANDSCAPE**



**CITY LUNGS**

Parks are to the city like the lungs are to the body. Arena Green is one of the important parks in San Jose, California. It plays a significant character that clearing the local air pollution and purifying the water resource. According to research, about 40% of the annual global oxygen production is due to algae. It is really an amazing natural resource. Algae resource can be used not only in environment purification but also to provide electricity and biomass fuels.

Our landmark building system is designed to mount tube algae harvesters and light power providers. Not only is the façade marked by luminescent green, but it is also literally alive, with the ability to transform carbon dioxide into oxygen and solar radiation lipids for biofuel production. It will definitely increase health and wellbeing for residents.

