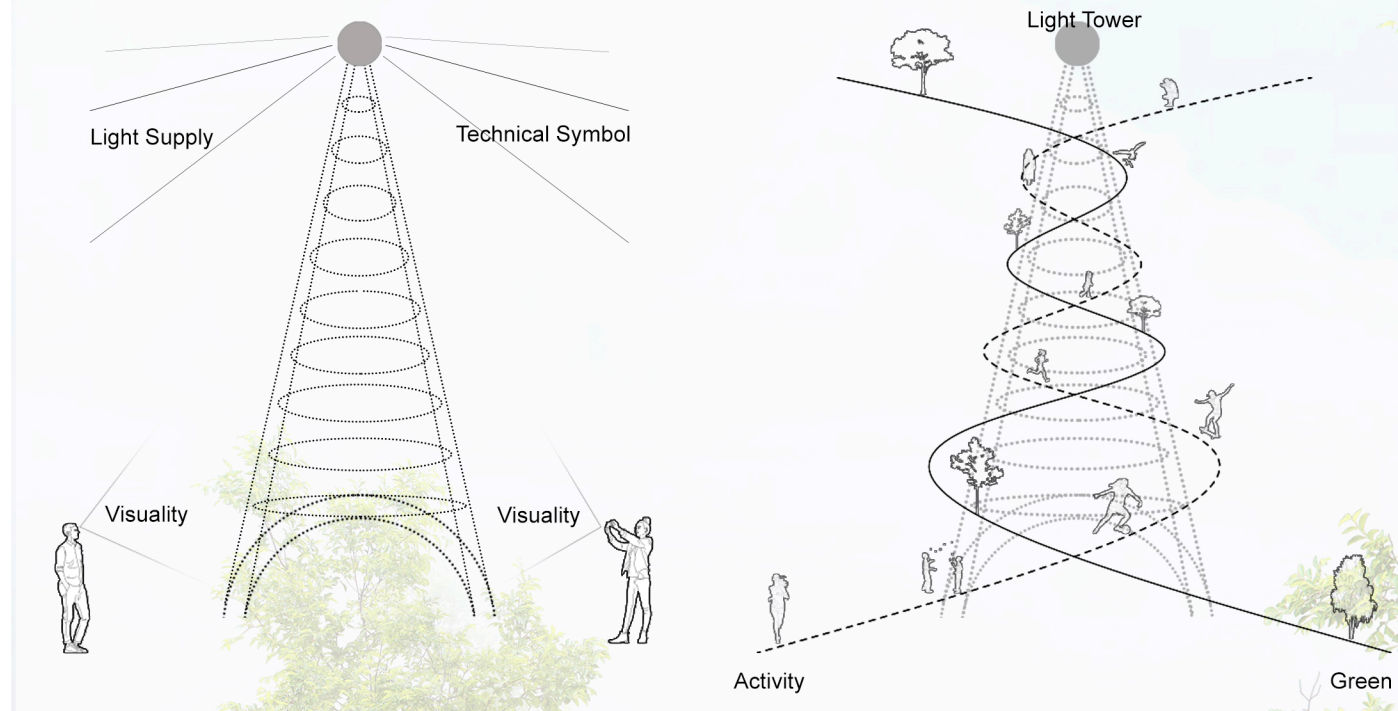


Design Concept

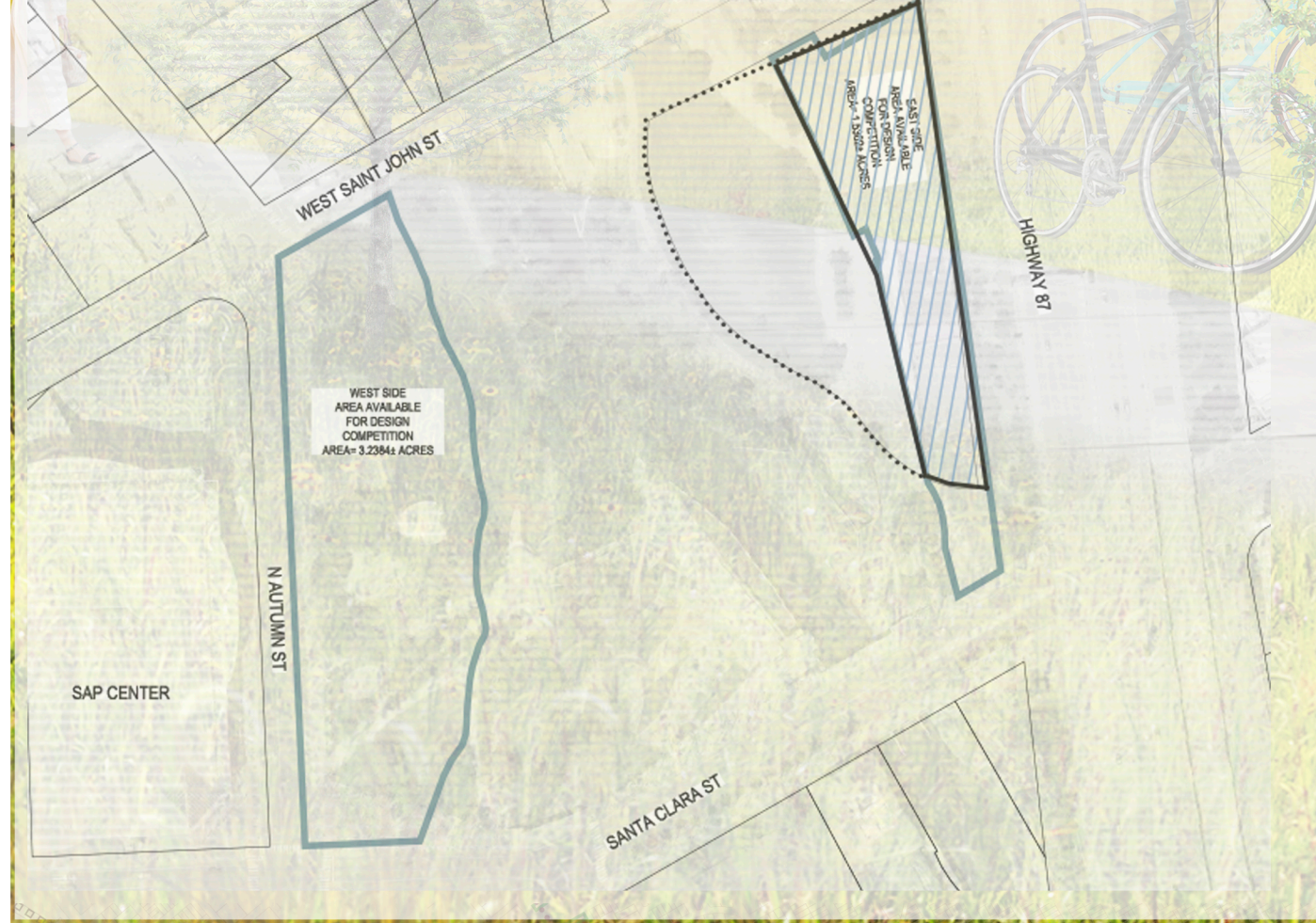


Many landmarks are often created based on the leading-edge technology of its period and they represent the technology of the time. To date, those landmarks have evolved into a cultural heritage as a form of various values. San Jose Electric Light Tower also initiated from the high-tech of late 1800s, and now we celebrate its historical value. After the first electric battery invention in 1800 by Alessandro Volta, humanity has made great efforts to overcome the darkness by controlling light. And after many trials and errors, practical lighting bulbs were finally invented in the hands of Thomas Edison in 1879 and the use of light spread out quickly. Under J. J. Owen's vision and enthusiastic support of local citizens of San Jose, the arc light tower was constructed in the downtown area to light up the night as day. (High Light Principle) Now, GreenLight attempts to continue and celebrates the spirits of landmarks and its public participation through the new landmark typology suitable for contemporary time.



LIGHT TOWER, the form of existing landmarks is mostly pinpointed or vertically expanded with highly visual attraction. Within these defined area, movements and activities of visitors are also limited. This stationary landmark type seems improbable and respites the atmosphere of heterogeneity from the vision of San Jose City and its Context, and the global trends. Therefore, GreenLight suggests a new landmark paradigm by applying the sustainable elements that match the global interests, 'Green' as well as celebrates the former light tower, 'Light'. Through verticality and horizontality, green and light, day and night, and front and back, these dualities will evoke public participations, their movements and various activities, and will provoke the real-time ever-changing landmark.

Site map

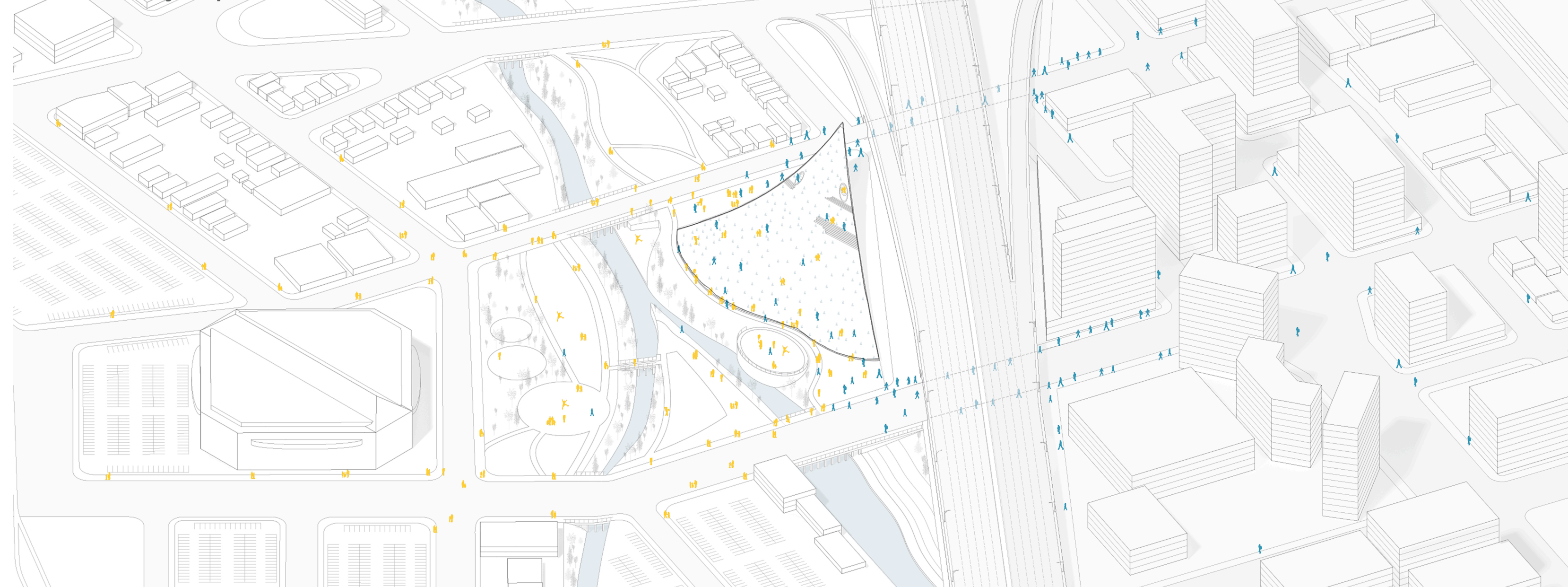


Site Condition

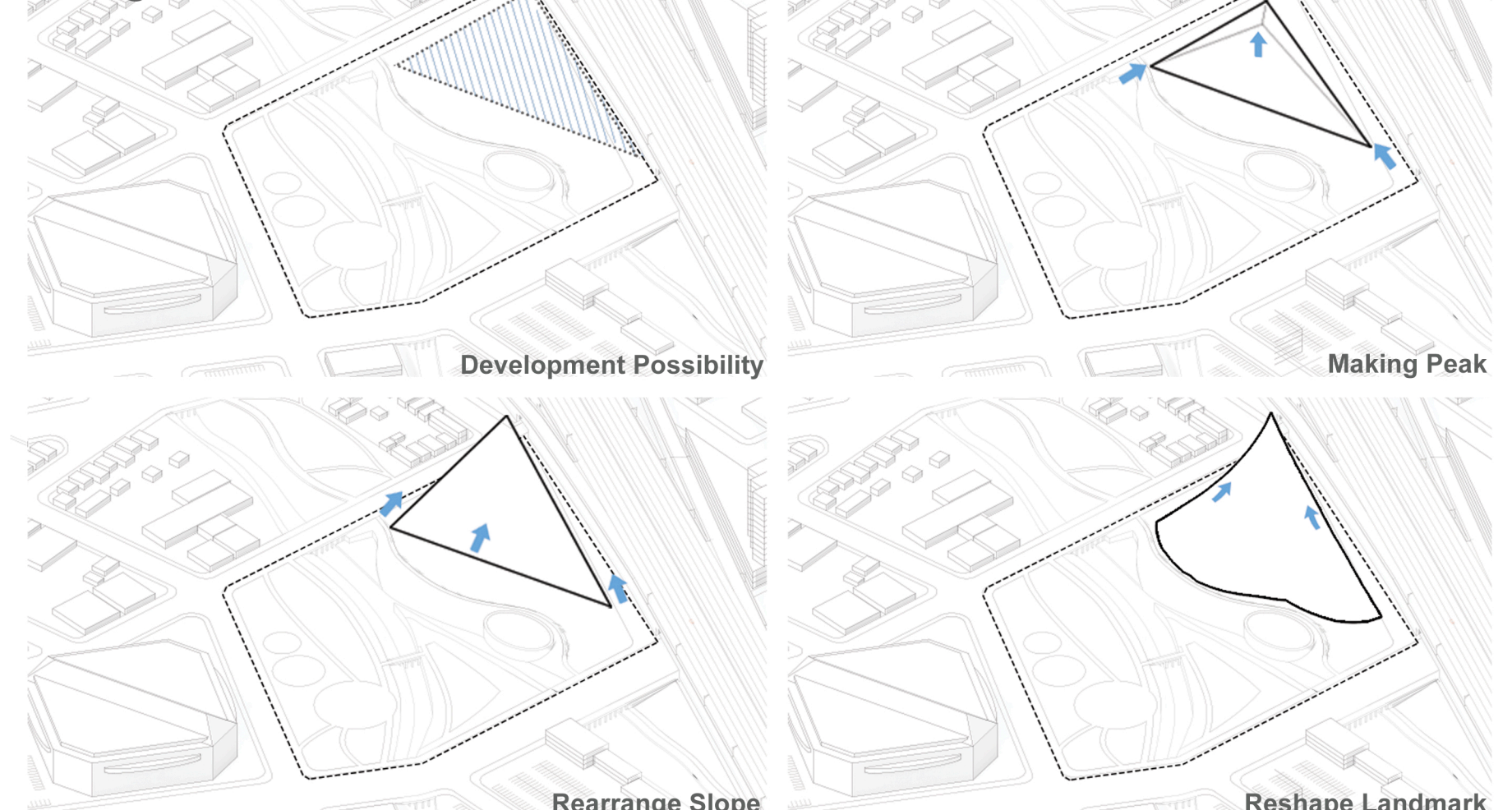


The context and users of different districts in San Jose are divided from the baseline of Guadalupe freeway; a highly developed business district on the east and a typical general urban zone in the United States are located on the west. In addition, the Guadalupe River flows from north to south, forming a natural/urban node within the region with two different characteristics. The given project site has the possibility of a city's integrated space that can capture not only the visual openness that can be seen in any high-rise building on the east side, but also various activities through its public transportation axis. It is a site that is well worth developing as a landmark that can contain various activities and users by utilizing the duality of day and night with coexistence of two different spatial contexts and natural elements.

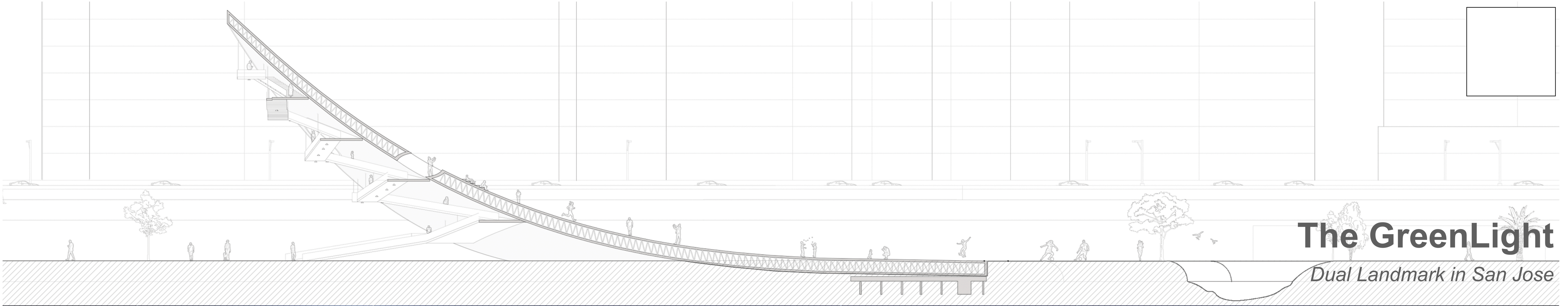
Landmark Cityscape



Design Process



The landmark design features of GreenLight can be mainly divided into the time, day and night. Green surface (green field), which expanded vertically and horizontally, provides public space for resting, picnic, or other events on daytime as a park landmark concept. The soaring form of green space create visual access from a distance. It also causes curiosity with high peak, and attracts visitors. In particular, it becomes a part of refuge and promenade of office works from business districts in the eastside, and it also can be used as yoga classes and various events. By providing more dynamic hillsides to the flat natural landscape of San Jose, GreenLight will change cityscape, skyline and the activities occurring within the city. In addition, keeping the existing Green space and park can accommodate many events that have been performed without spatial loss, and at the same time, GreenLight's backside (East Facade) opens another potential of simultaneous events through spatial divisions.

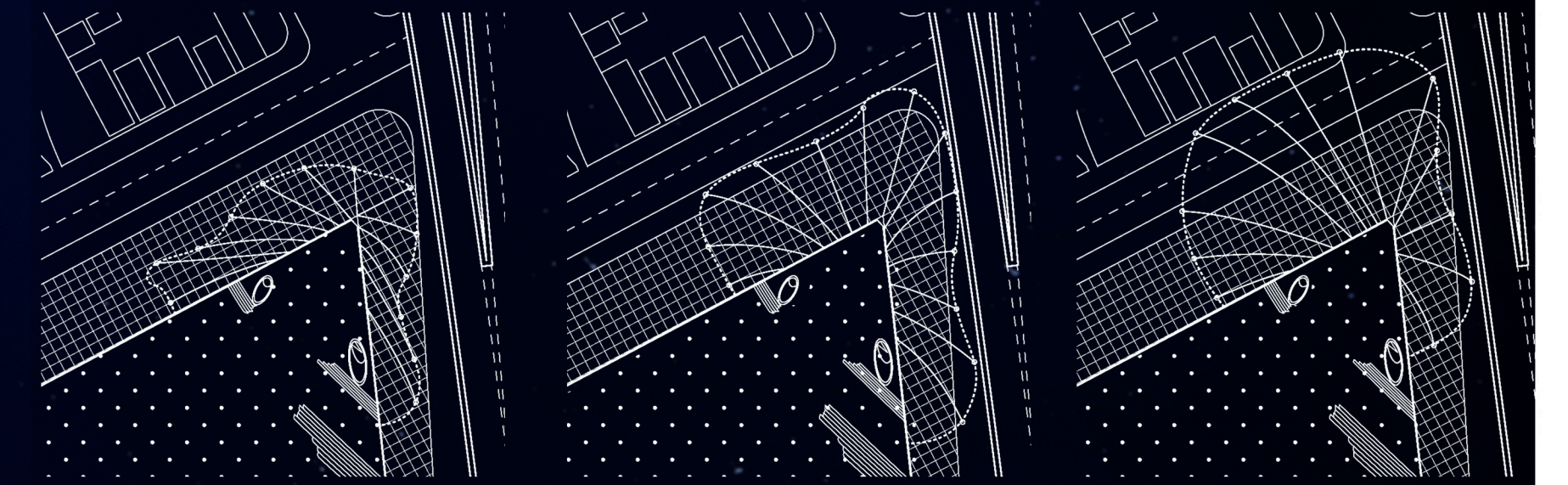


The GreenLight

Dual Landmark in San Jose



The landmark element of night is 'Light', and there are two different light features as a design element. First, 'Beacon Light', which serves like a signal of lighthouse, is located at the top of the tower as the brightest light, and serves as a direction and symbol that can be easily seen and found from any side of the city. The pin lights are started from Beacon light and illuminate along the public ramps on the east side connecting to the ground. The second light is LED strip lights and numerous LED strips connected from edge of the structure are connected to the surrounding ground to indicate a space. The space and its size of the LED light space can be freely manipulated from time to time depending on the event. LED lights also provide new spatial experience and contains symbolic meaning; just as the old Light Tower installed on the roads, GreenLight redefines its characteristic like lightness, spatial experience and its symbolic meaning through re-interpretation with contemporary languages.



Night Market

Special Exhibition

Street Laser Show

The two different facades have different properties and perform their roles at different times. During daytime, towering green field provides different types of parks and resting places for those looking for an existing park, while the other side creates a modern and artificial space, attracting and gathering local residences and visitors, through various light elements inspired by the former Light Tower, mainly after sunset. It also encourages night activity and provide night culture in San Jose. The relation of the duality symbolically represents the subtle balance between San Jose's IT industry and the beautiful natural landscape.