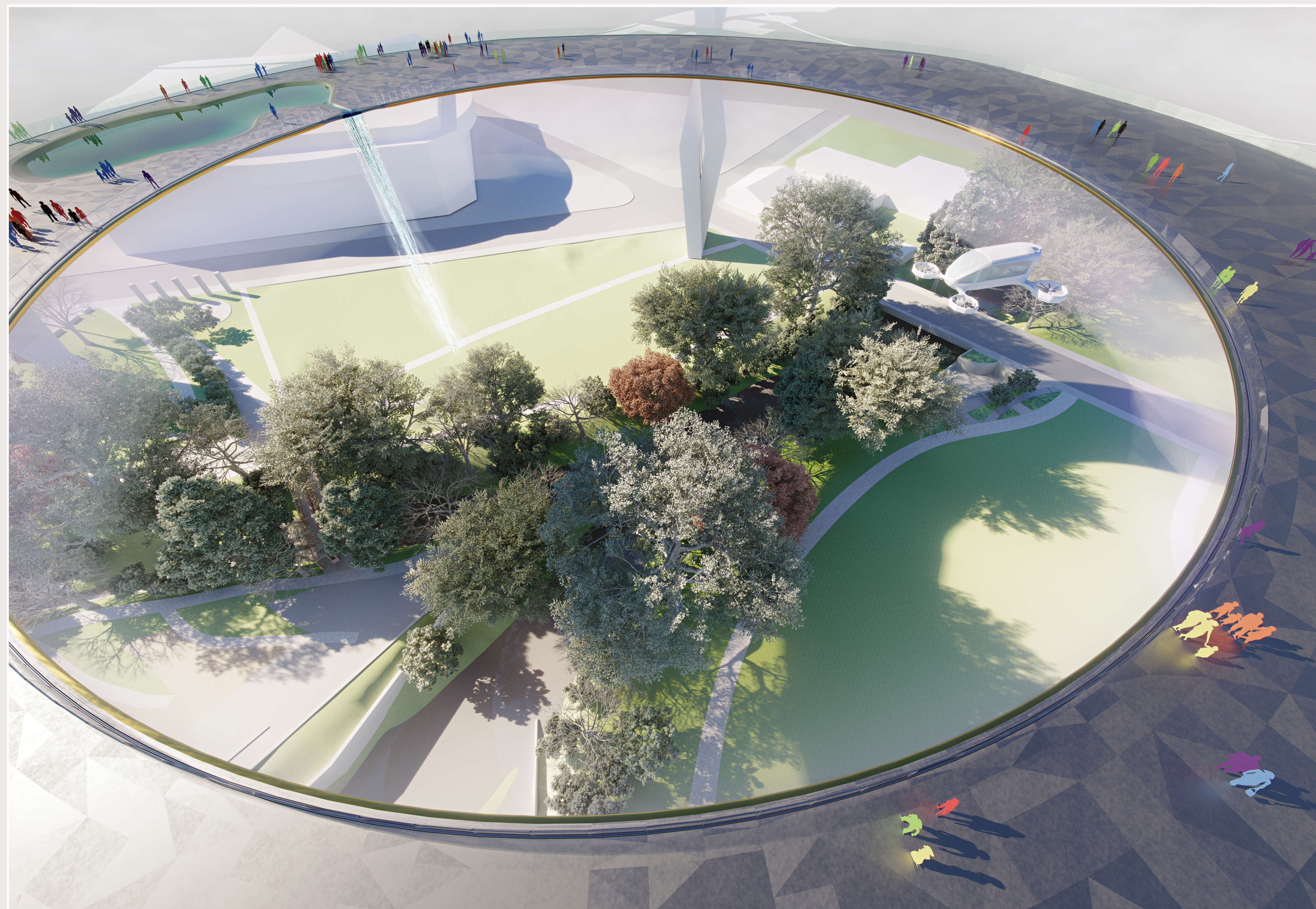


URBAN CONFLUENCE

SILICON VALLEY

THE CLOUD TOWER



PROJECT SUMMARY

The project brings the great nature's powers such as water and air combined with the cutting edge of technology to the heart of the Silicon Valley while pushing the technology to its new limits and challenging both public and professionals for its acceptance and boundaries.

The design derives its core fundamentals from the original Light Tower, such as the low footprint, while providing a significant visual impact to the area, making it impossible to be in the city of San Jose and not to see and visit the new Cloud Tower.

PROJECT STATEMENT

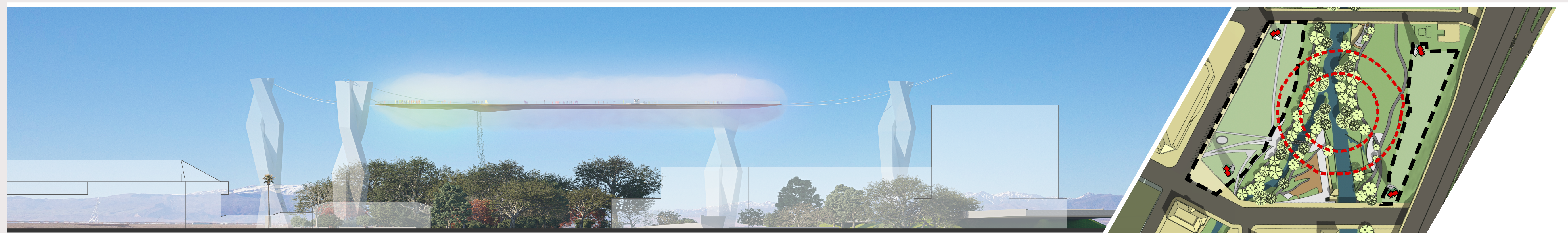
The project addresses the original Light Tower from 1895 through some design references without bringing back all the concerns associated with the original tower design.

The project keeps the new structure footprint low in the existing park while providing a fairly significant visual impact to the public, visitor's attraction, and nature coupled with modern technology symbol for the Silicon Valley.

For the spectators, there is no link for visiting the Cloud Tower in a traditional sense as access to the main structure is provided through non-traditional means of transportation. That creates an additional attraction to people making visiting the Cloud a unique experience for the person. The electric air shuttle serves as the only public access to the Tower Cloud. It symbolizes eco-friendliness coupled with modern technology while adding one more completely new local public transit option to the largely updated and improved Diridon Hub. Note that emergency means of egress are separate and provided through different means.

While the structure has a minimal footprint on the ground and has no effect on the riparian corridor, it provides around 100,000 sf of additional real estate in the clouds giving an opportunity to use that area for power generation and local microclimate improvements. The top surface of the object is finished with walkable integrated solar generation cells/tiles making the object net-zero or even net-positive. The fog, generated by the Cloud Tower and delivered through its pores, provides an ability to communicate with the public and moisturize the air affecting the local microclimate during hot summer days. The whole body of the object improves the area visitors' comfort by cutting off the noise coming from the landing flights that head toward SJC and providing the shield from unpleasant direct sunlight during the noon while welcoming the morning and evening sun.

CLOUD VIEW



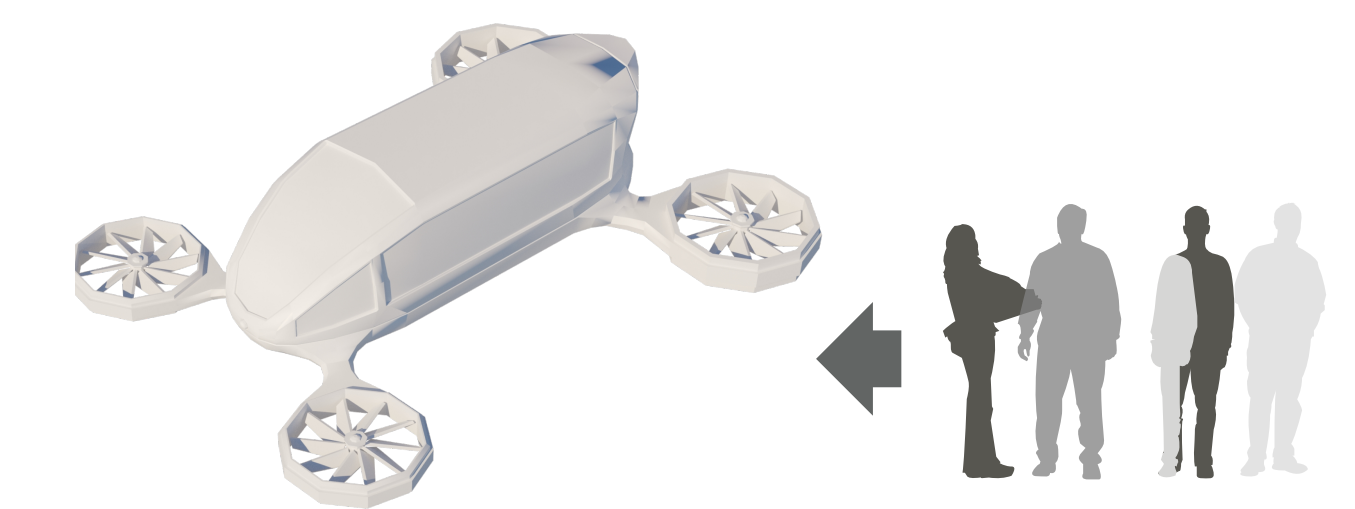
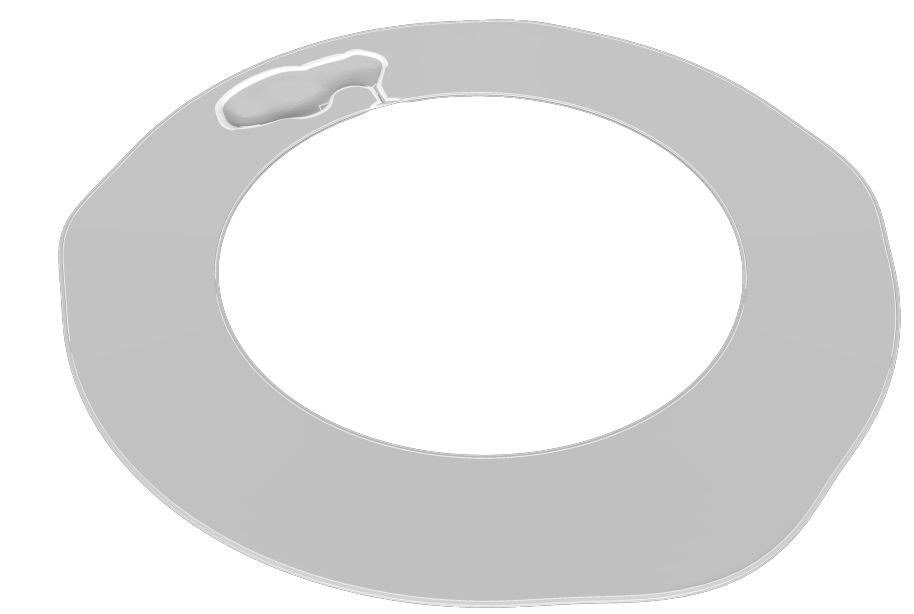
STREET ELEVATION

PROJECT FOOTPRINT SITE MAP

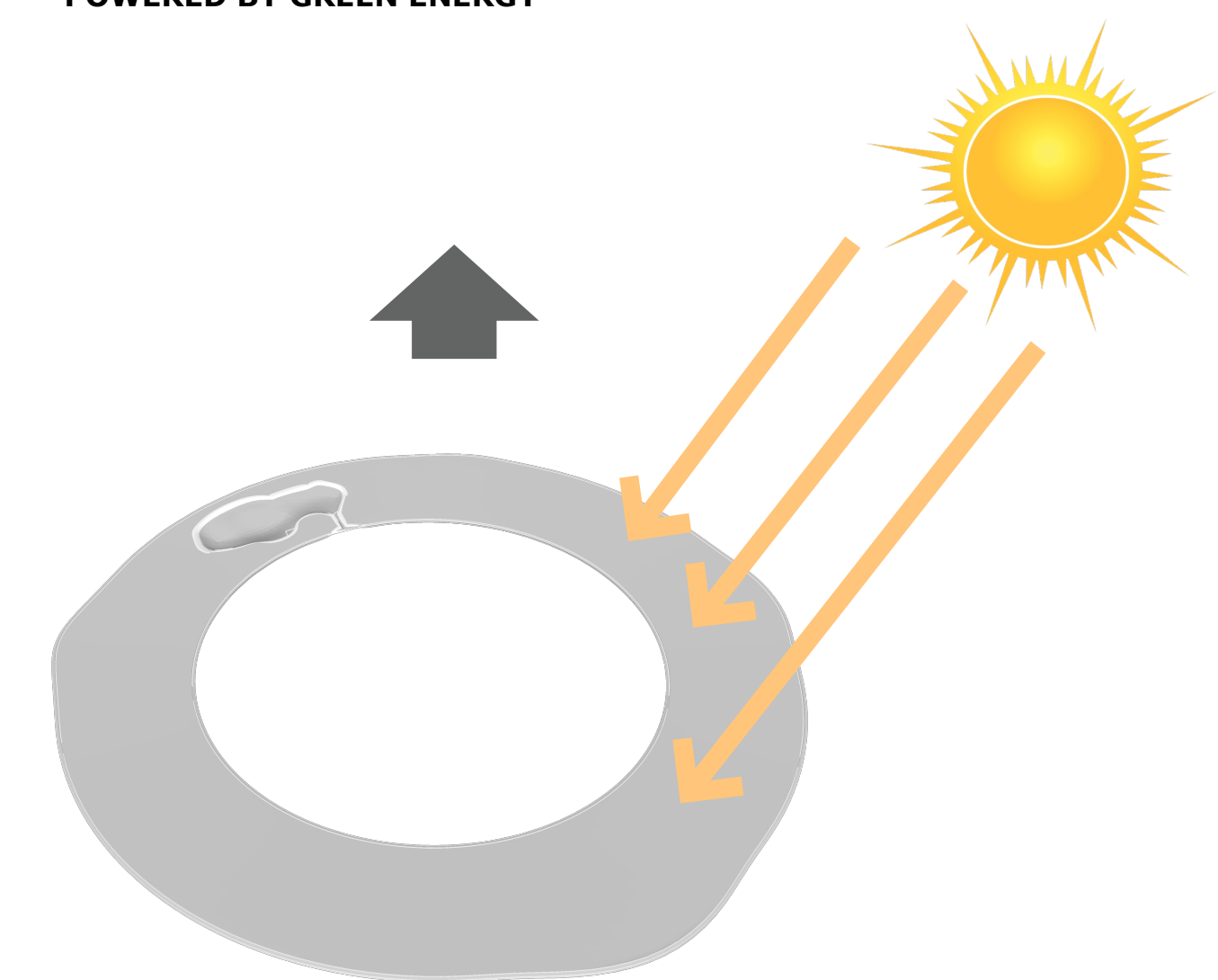
URBAN CONFLUENCE

SILICON VALLEY

THE CLOUD TOWER



POWERED BY GREEN ENERGY

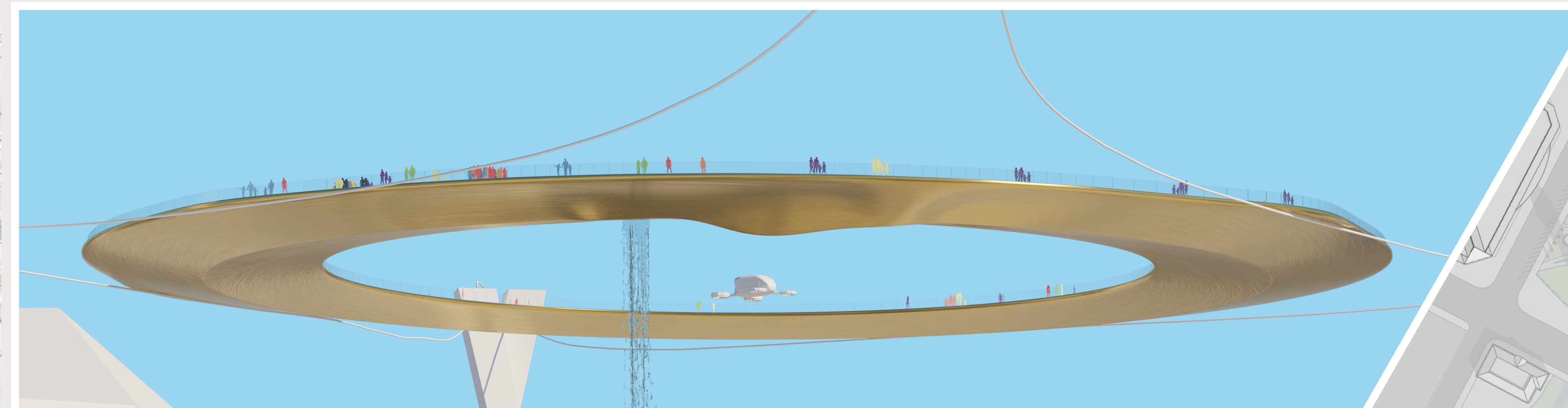


POWER GENERATION

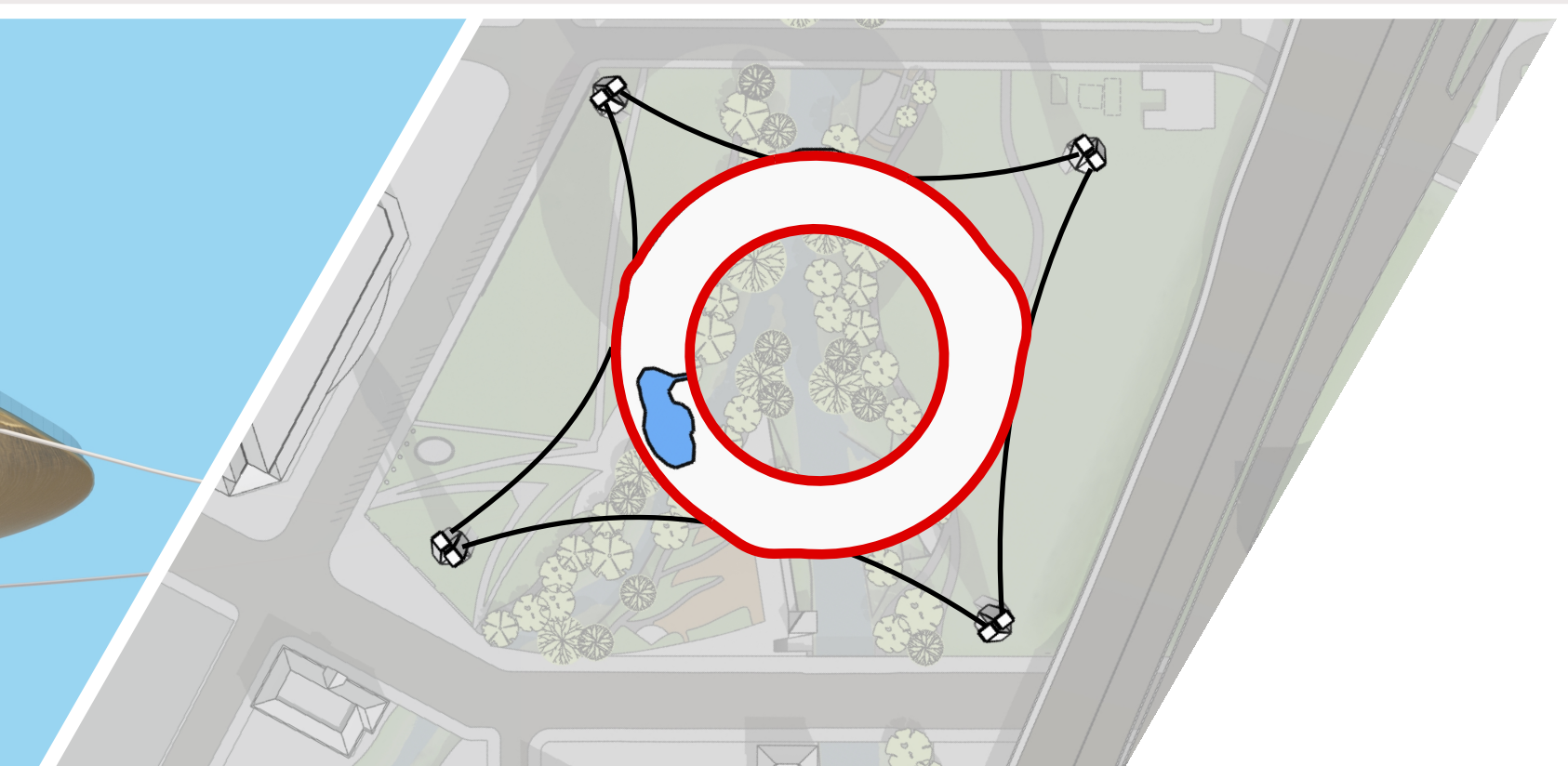
VIEW TO THE CLOUD TOWER FROM SAP CENTER



SITE MAP



THE TOWER WITHOUT CLOUD PHASE



FLOOR SCHEME