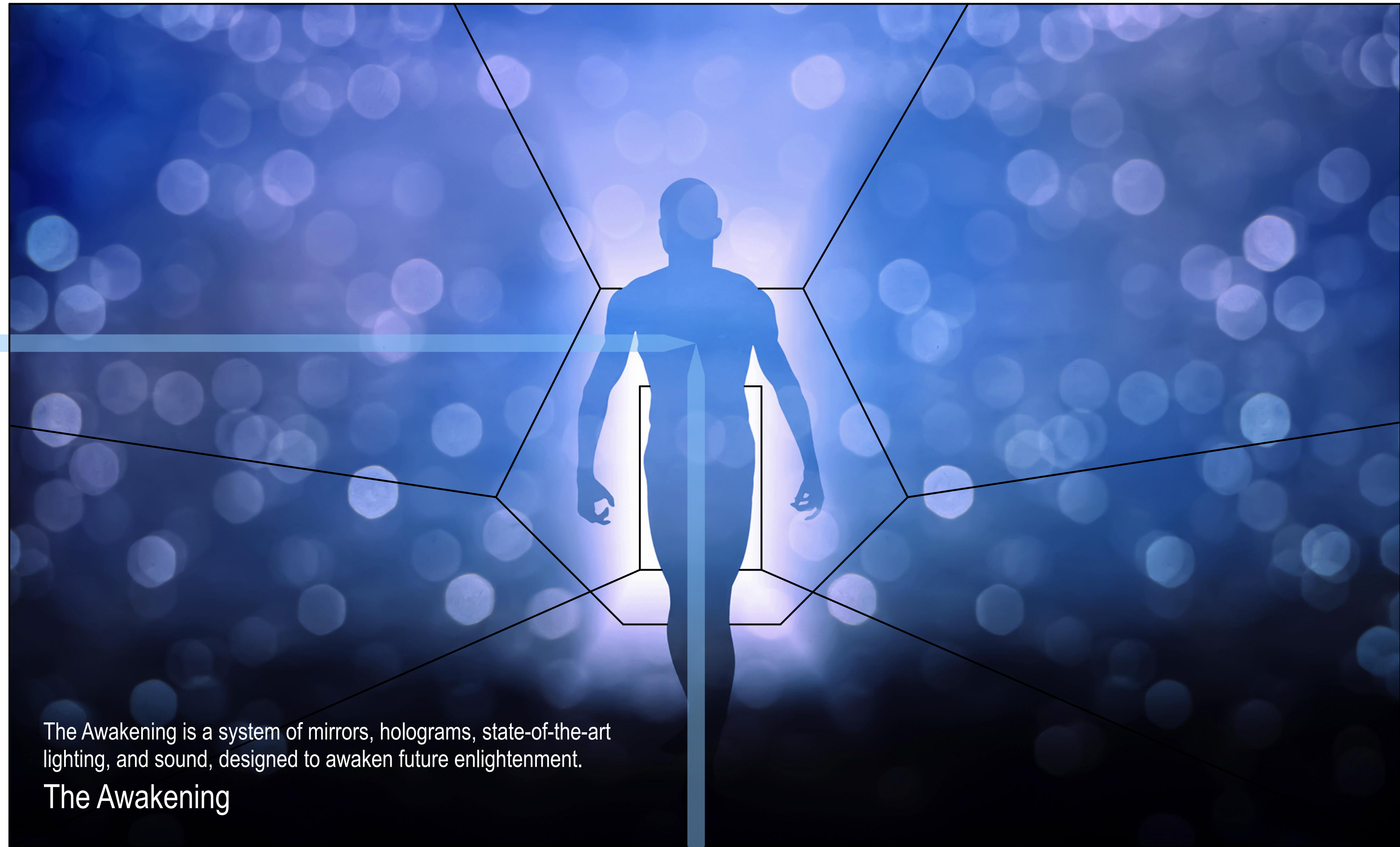


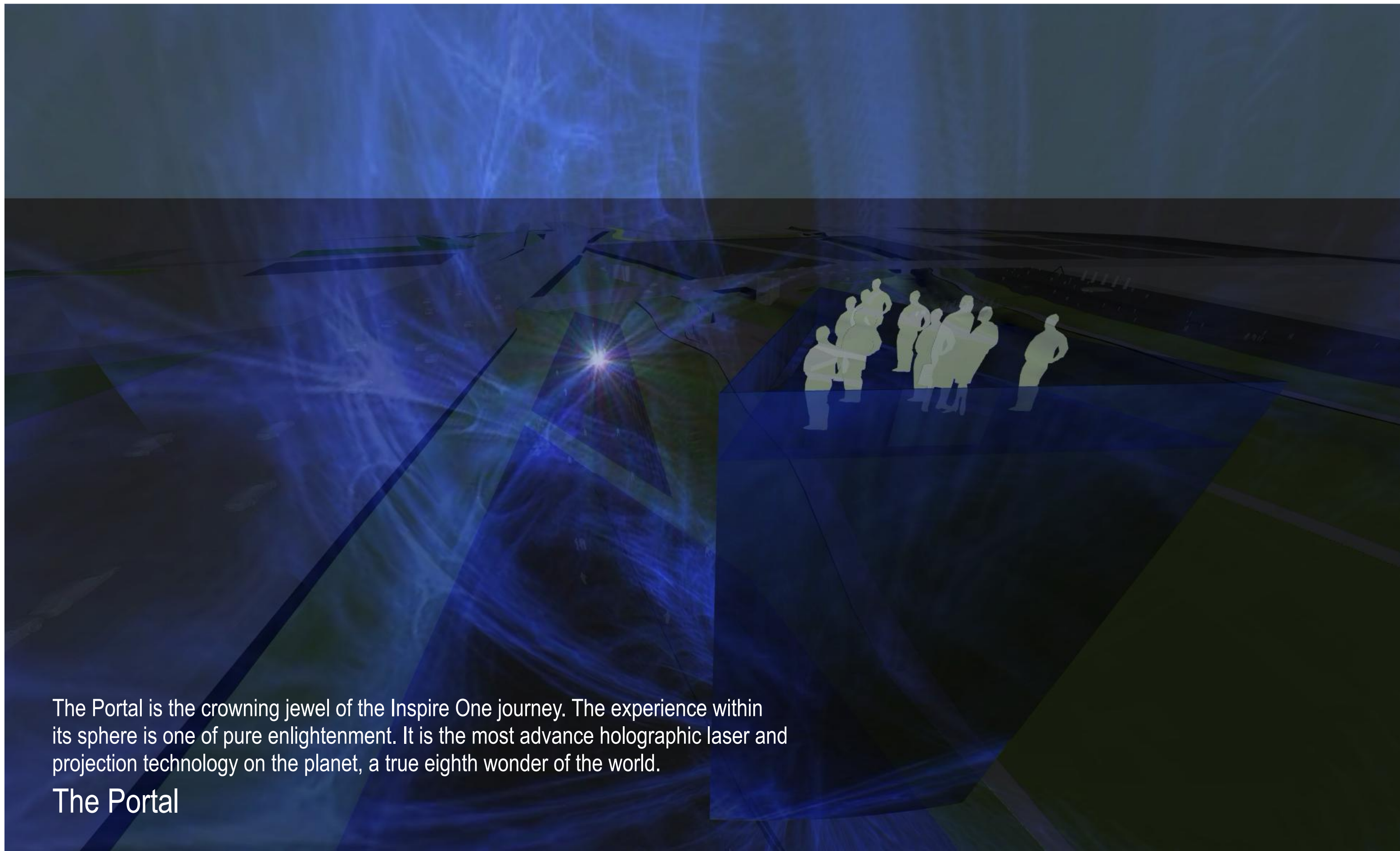
The interior of the Gateway is minimal, yet futuristic, echoing the reflections of the people who have entered into its vaulted form and its reverberative surfaces, drawing in their energy and focussing it towards a tower which penetrates the earth.

The Gateway



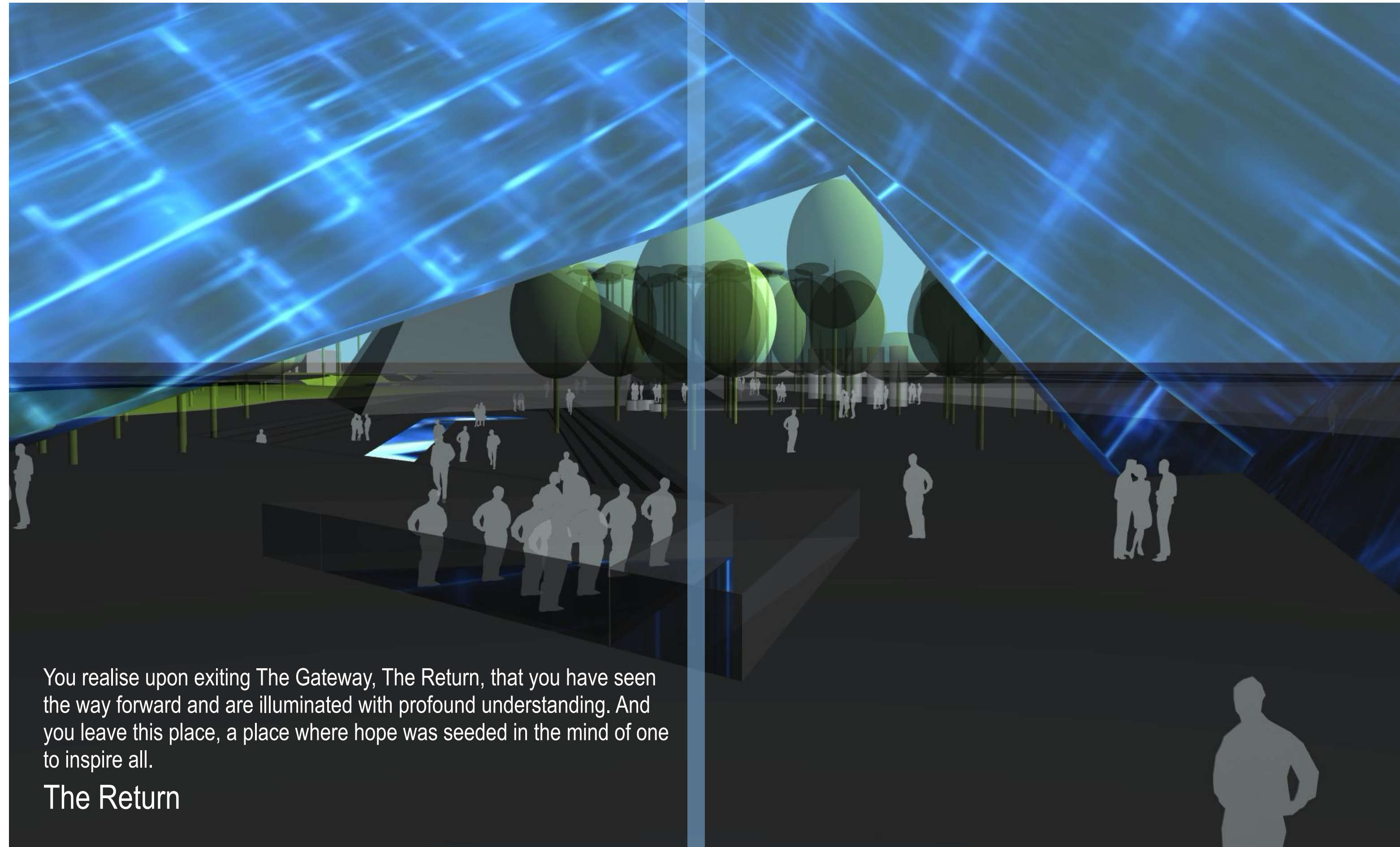
The Awakening is a system of mirrors, holograms, state-of-the-art lighting, and sound, designed to awaken future enlightenment.

The Awakening



The Portal is the crowning jewel of the Inspire One journey. The experience within its sphere is one of pure enlightenment. It is the most advance holographic laser and projection technology on the planet, a true eighth wonder of the world.

The Portal

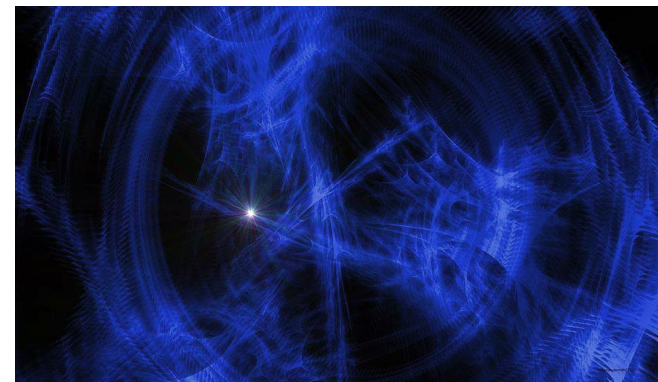


You realise upon exiting The Gateway, The Return, that you have seen the way forward and are illuminated with profound understanding. And you leave this place, a place where hope was seeded in the mind of one to inspire all.

The Return



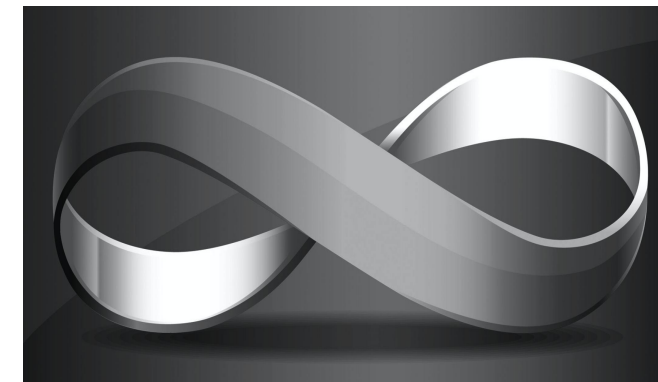
Unite Humanity.



Seed Generator.



Time Travel Of The Mind.



Limitless Opportunity.



The Impossible.



Fourth Dimensional Gateway.



Leave This Place Reborn.

INSPIRE ONE

inspire all

Inspire One is a living monument to the spirit of Silicon Valley and all it represents as the technological powerhouse of the future.

It was felt an unsightly bridge structure would detract from the power and mystery of clean geometric forms. An underground journey invokes excitement, anticipation, and has a symbolic connection with Silicon Valley.

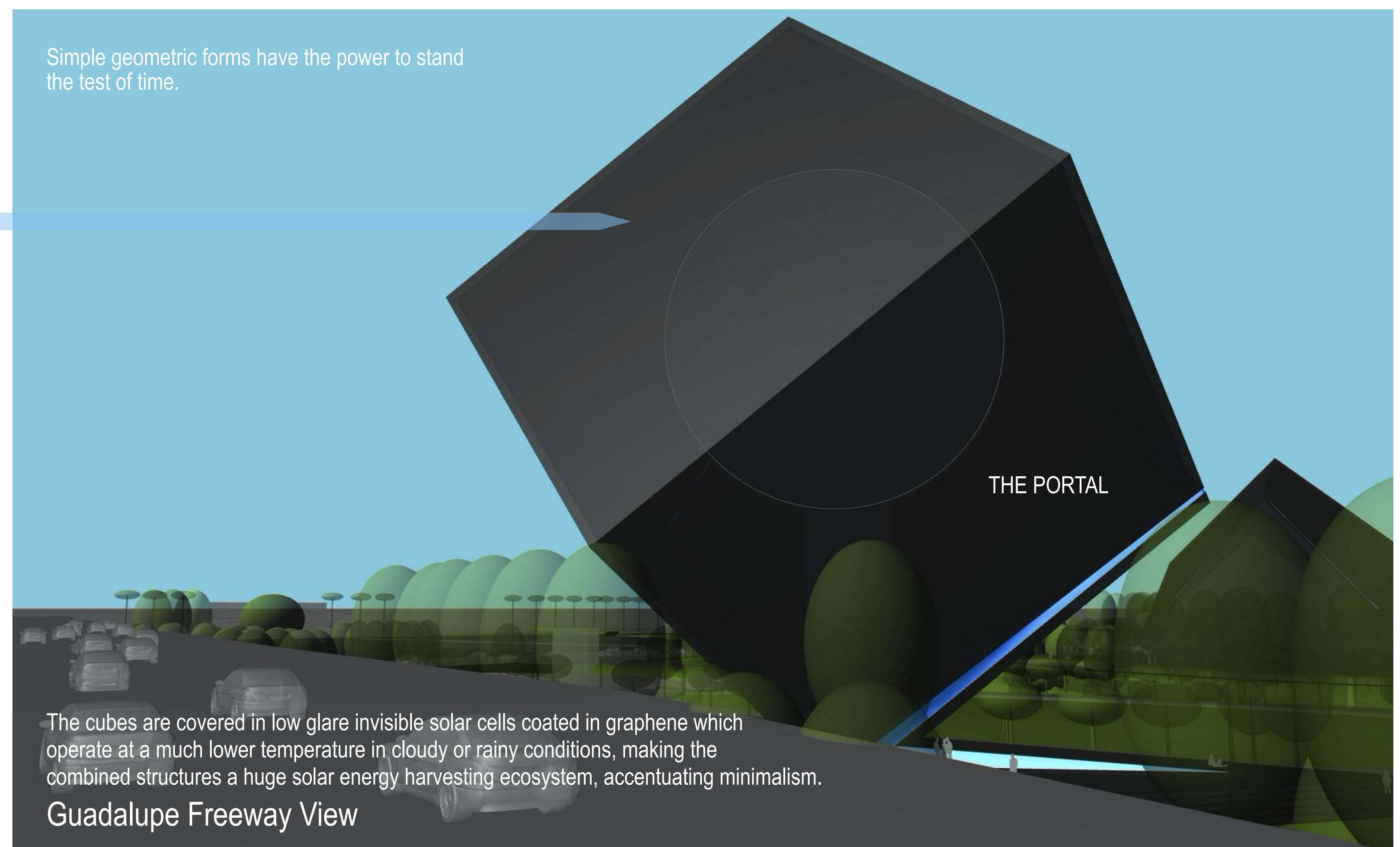
It was from the sands of the valley that technology grew. It is beneath the confluence of opportunity that the journey begins into infinity.



Designed and constructed to be an inspiration for the planet by reaffirming the need to protect the environment through the innovative application of technology.

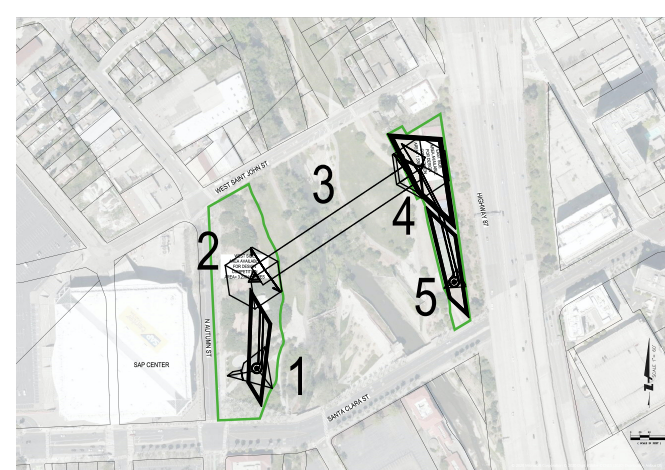
Aerial View Site Map

Simple geometric forms have the power to stand the test of time.



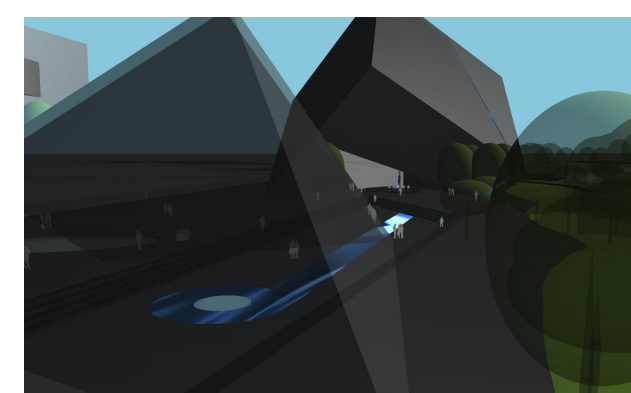
The cubes are covered in low glare invisible solar cells coated in graphene which operate at a much lower temperature in cloudy or rainy conditions, making the combined structures a huge solar energy harvesting ecosystem, accentuating minimalism.

Guadalupe Freeway View

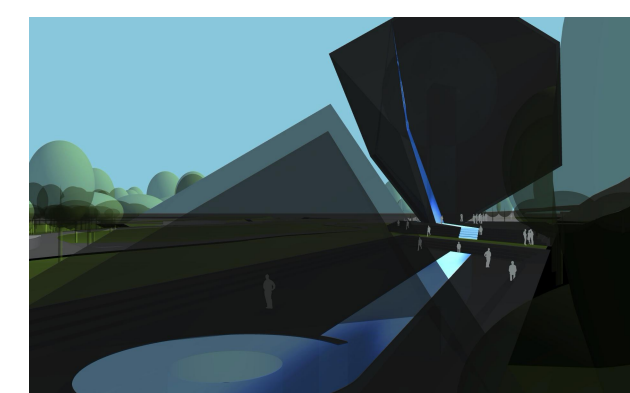


Site Map

- 1 West Turbine
- 2 The Gateway
- 3 The Awakening
- 4 The Portal
- 5 East Turbine



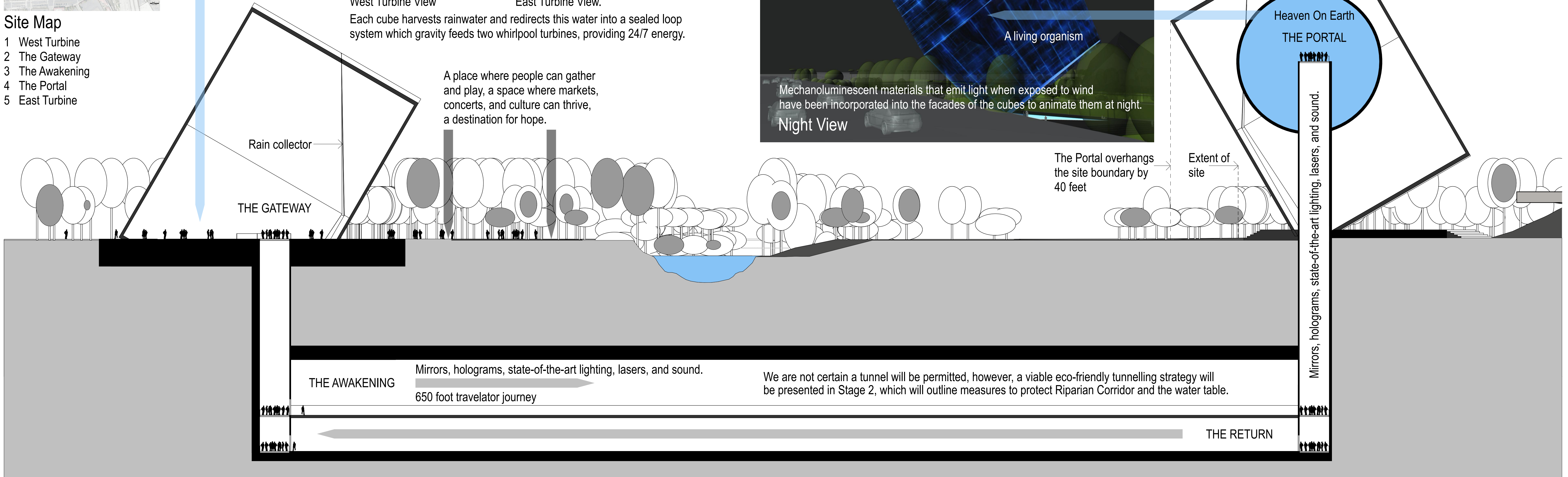
West Turbine View



East Turbine View.

Each cube harvests rainwater and redirects this water into a sealed loop system which gravity feeds two whirlpool turbines, providing 24/7 energy.

A place where people can gather and play, a space where markets, concerts, and culture can thrive, a destination for hope.



Longitudinal Site Section

Mechanoluminescent materials that emit light when exposed to wind have been incorporated into the facades of the cubes to animate them at night.

Night View

We are not certain a tunnel will be permitted, however, a viable eco-friendly tunnelling strategy will be presented in Stage 2, which will outline measures to protect Riparian Corridor and the water table.